



ANTERO RESOURCES CORPORATION

Location: Tyler County, WV
 Field: Tyler
 Facility: Elk Fork Pad

Slot: Slot #02
 Well: Tygart Unit 2H
 Wellbore: Tygart Unit 2H PWB

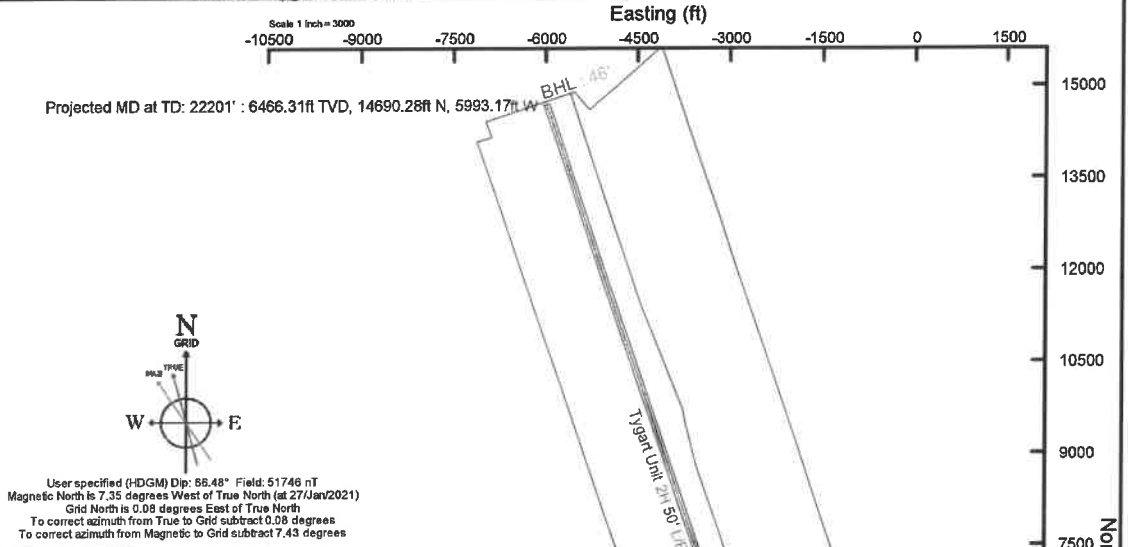
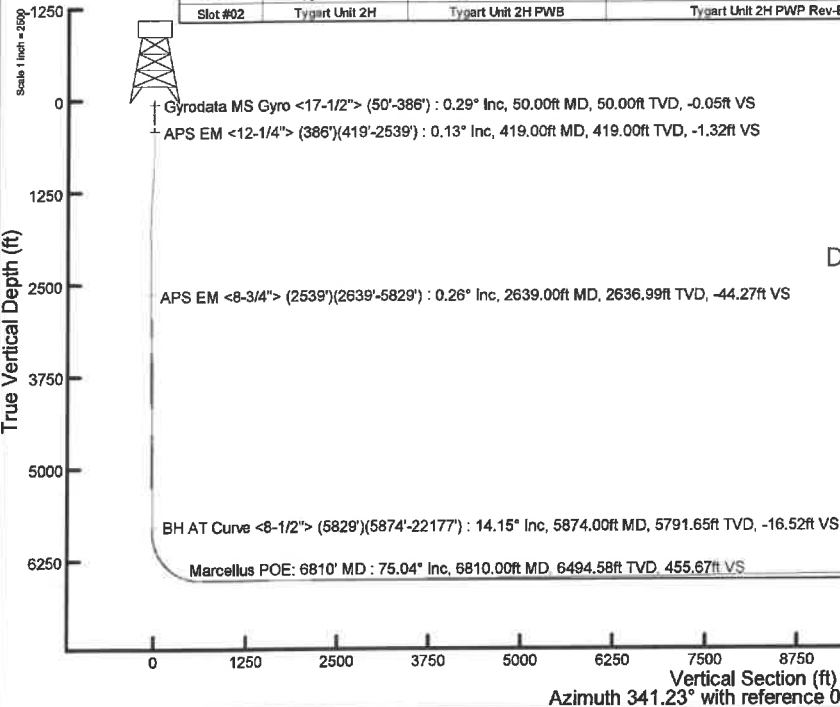


Plot reference wellpath is Tygart Unit 2H PWP Rev-B.0	Grid System: NAD27 / UTM Zone 17 North, US feet
True vertical depths are referenced to H&P 317 (RKB)	North Reference: Grid north
Reference wellpath measured depths are referenced to H&P 317 (RKB)	Scale: True distance
H&P 317 (RKB) to Mean Sea Level: 1151.5 feet	Coordinates are in feet referenced to Slot
Mean Sea Level to Ground level (At Slot: Slot #02): -1129 feet	Depths are in feet
Offset wellpath MDs are referenced to each path's default MD datum	Created by: edc/sayar on 2021-02-04; Database: WA MPL EASTERNUS_Datm

Location Information				
Facility Name	Grid East (US ft)	Grid North (US ft)	Latitude	Longitude
Elk Fork Pad	1676885.036	14359018.492	39°32'28.3780"N	80°52'14.3200"W
Slot	Local N (ft)	Local E (ft)	Grid East (US ft)	Grid North (US ft)
Slot #02	-1.33	-14.88	1676870.160	14359017.160
Comment: Tygart Unit 2H				
H&P 317 (RKB) to Ground level (At Slot: Slot #02)				25.5ft
Mean Sea Level to Ground level (At Slot: Slot #02)				-1126ft
H&P 317 (RKB) to Mean Sea Level				1151.5ft

Well Profile Data								
Design Comment	MD (ft)	Inc (")	Az (°)	TVD (ft)	Local N (ft)	Local E (ft)	DLS (°/100ft)	VS (ft)
Tie On	2539.00	0.680	24.700	2537.00	-50.96	-10.41	0.35	-44.89
Proj. to Bottom	2616.00	0.680	24.700	2613.99	-50.12	-10.03	0.00	-44.23
KOP 1	2696.00	0.680	24.700	2693.99	-49.26	-9.63	0.00	-43.54
End of 3D Arc	3413.24	13.883	252.867	3404.45	-70.86	-90.50	2.00	-37.97
Curve KOP	5955.88	13.883	252.867	5872.81	-250.57	-673.50	0.00	-20.54
End of 3D Arc	6349.01	35.000	318.000	6233.76	-178.87	-797.12	8.00	87.13
POE	6782.26	72.014	334.057	6488.00	109.99	-977.42	9.00	418.65
Landing Pt.	7007.11	90.000	334.057	6523.00	308.88	-1074.17	8.00	638.07
On AZI	7365.57	90.000	341.226	6523.00	640.16	-1210.44	2.00	995.60
BHL	22198.09	90.000	341.226	6523.00	14684.49	-5984.34	0.00	15829.12

Well Data			
Slot	Well	Wellbore	Wellpath
Slot #02	Tygart Unit 2H	Tygart Unit 2H AWB	Tygart Unit 2H AWP Proj: 22201'
Slot #02	Tygart Unit 2H	Tygart Unit 2H PWB	Tygart Unit 2H PWP Rev-B.0



User specified (HDGM) Dip: 68.48° Field: 51746 nT
 Magnetic North is 7.35 degrees West of True North (at 27/Jan/2021)
 Grid North is 0.08 degrees East of True North
 To correct azimuth from True to Grid subtract 0.08 degrees
 To correct azimuth from Magnetic to Grid subtract 7.43 degrees

API : 47-095-02722-0000
 BH Job # : 110728658-B
 Rig : H&P 317
 Duration : 1/28/2021-2/3/2021

Marcellus POE: 6810' MD : 6494.58ft TVD, 144.35ft N, 991.38ft W
 BH AT Curve <8-1/2"> (5829')(5874'-22177') : 5791.65ft TVD, 241.19ft S, 658.37ft W
 APS EM <8-3/4"> (2539')(2639'-5829') : 2636.99ft TVD, 50.19ft S, 10.12ft W
 APS EM <12-1/4"> (386')(419'-2539') : 419.00ft TVD, 1.41ft S, 0.05ft W
 Gyrodatta MS Gyro <17-1/2"> (50'-386') : 50.00ft TVD, 0.06ft S, 0.02ft W

Projected MD at TD: 22201' : 88.95" Inc, 22201.00ft MD, 6486.31ft TVD, 15837.44ft VS

Vertical Section (ft)
 Azimuth 341.23° with reference 0.00 N, 0.00 E
 Scale 1 inch = 2500



Actual Wellpath Report

Tygart Unit 2H AWP Proj: 22201'
Page 1 of 13



REFERENCE WELLPATH IDENTIFICATION			
Operator	ANTERO RESOURCES CORPORATION	Well	Tygart Unit 2H
Field	Tyler	API	47-095-02722-0000
Facility	Elk Fork Pad	Wellbore	Tygart Unit 2H AWB
Slot	Slot #02		

REPORT SETUP INFORMATION			
Projection System	NAD27 / UTM Zone 17 North, US feet	Software System	WellArchitect® 6.0
North Reference	Grid	User	Edsaryar
Scale	0.999602	Report Generated	04/Feb/2021 at 22:41
Convergence at slot	0.08° East	Database	WA_MPL_EASTERNUS_Defn

WELLPATH LOCATION						
	Local coordinates		Grid coordinates		Geographic coordinates	
	North[ft]	East[ft]	Easting[US ft]	Northing[US ft]	Latitude	Longitude
Slot Location	-1.33	-14.88	1676870.16	14359017.16	39°32'28.3650"N	80°52'14.5100"W
Facility Reference Pt			1676885.04	14359018.49	39°32'28.3780"N	80°52'14.3200"W
Field Reference Pt			0.00	0.00	0°00'0.0000"	85°29'19.3013"W

WELLPATH DATUM			
Calculation method	Minimum curvature	H&P 317 (RKB) to Facility Vertical Datum	1151.50ft
Horizontal Reference Pt	Slot	H&P 317 (RKB) to Mean Sea Level	1151.50ft
Vertical Reference Pt	H&P 317 (RKB)	H&P 317 (RKB) to Ground Level at Slot (Slot #02)	25.50ft
MD Reference Pt	H&P 317 (RKB)	Section Origin	N 0.00, E 0.00 ft
Field Vertical Reference	Mean Sea Level	Section Azimuth	341.23°



Actual Wellpath Report

Tygart Unit 2H AWP Proj: 22201'
Page 2 of 13



REFERENCE WELLPATH IDENTIFICATION			
Operator	ANTERO RESOURCES CORPORATION	Well	Tygart Unit 2H
Field	Tyler	API	47-095-02722-0000
Facility	Elk Fork Pad	Wellbore	Tygart Unit 2H AWB
Slot	Slot #02		

WELLPATH DATA (262 stations) † = interpolated, ‡ = extrapolated station																
MD	Inclination	Azimuth	TVD	Vert Sect	North	East	Grid East	Grid North	Latitude	Longitude	Closure Dist	Closure Dir	DLS	Build Rate	Turn Rate	Comments
[ft]	[°]	[°]	[ft]	[ft]	[ft]	[ft]	[US ft]	[US ft]			[ft]	[°]	[°/100ft]	[°/100ft]	[°/100ft]	
0.00	0.000	194.710	0.00	0.00	0.00	0.00	1676870.16	14359017.16	39°32'28.3650"N	80°52'14.5100"W	0.00	0.000	0.00	0.00	0.00	
25.50	0.000	194.710	25.50	0.00	0.00	0.00	1676870.16	14359017.16	39°32'28.3650"N	80°52'14.5100"W	0.00	0.000	0.00	0.00	0.00	
50.00	0.290	194.710	50.00	-0.05	-0.06	-0.02	1676870.14	14359017.10	39°32'28.3644"N	80°52'14.5102"W	0.06	194.710	1.18	1.18	0.00	Gyrodata MS Gyro <17-1/2"> (50'-386')
150.00	0.320	177.470	150.00	-0.53	-0.58	-0.07	1676870.09	14359016.58	39°32'28.3593"N	80°52'14.5109"W	0.59	186.614	0.10	0.03	-17.24	
250.00	0.280	176.820	250.00	-1.03	-1.11	-0.04	1676870.12	14359016.05	39°32'28.3541"N	80°52'14.5106"W	1.11	182.163	0.04	-0.04	-0.65	
350.00	0.070	209.750	350.00	-1.31	-1.40	-0.06	1676870.10	14359015.76	39°32'28.3512"N	80°52'14.5108"W	1.40	182.389	0.22	-0.21	32.93	
386.00	0.020	234.120	386.00	-1.33	-1.43	-0.07	1676870.09	14359015.73	39°32'28.3509"N	80°52'14.5110"W	1.43	182.992	0.15	-0.14	67.69	
419.00	0.130	53.360	419.00	-1.32	-1.41	-0.05	1676870.11	14359015.75	39°32'28.3511"N	80°52'14.5107"W	1.41	182.001	0.45	0.33	543.15	APS EM <12-1/4"> (386')(419'-2539')
509.00	0.900	239.580	509.99	-1.43	-1.70	-0.58	1676869.58	14359015.46	39°32'28.3482"N	80°52'14.5174"W	1.80	198.696	1.14	0.86	-193.09	
600.00	2.550	216.530	599.95	-2.73	-3.69	-2.40	1676867.76	14359013.47	39°32'28.3286"N	80°52'14.5407"W	4.40	212.999	1.93	1.81	-25.33	
690.00	2.640	214.680	689.86	-5.10	-7.01	-4.77	1676865.39	14359010.16	39°32'28.2959"N	80°52'14.5710"W	8.48	214.243	0.14	0.10	-2.06	
780.00	3.330	207.600	779.74	-8.14	-11.03	-7.16	1676863.00	14359006.14	39°32'28.2562"N	80°52'14.6016"W	13.15	212.994	0.87	0.77	-7.87	
870.00	4.170	208.560	869.54	-12.16	-16.22	-9.94	1676860.23	14359000.95	39°32'28.2049"N	80°52'14.6371"W	19.02	211.492	0.94	0.93	1.07	
960.00	4.230	209.300	959.30	-16.59	-21.99	-13.12	1676857.04	14358995.18	39°32'28.1479"N	80°52'14.6779"W	25.61	210.833	0.09	0.07	0.82	
1050.00	4.350	211.270	1049.05	-21.00	-27.80	-16.52	1676853.65	14358989.37	39°32'28.0905"N	80°52'14.7214"W	32.34	210.722	0.21	0.13	2.19	
1144.00	4.490	197.200	1142.77	-26.27	-34.36	-19.46	1676850.71	14358982.81	39°32'28.0257"N	80°52'14.7590"W	39.49	209.523	1.16	0.15	-14.97	
1237.00	3.630	183.750	1235.54	-31.94	-40.78	-20.73	1676849.44	14358976.40	39°32'27.9623"N	80°52'14.7753"W	45.74	206.945	1.37	-0.92	-14.46	
1331.00	3.580	178.370	1329.35	-37.49	-46.68	-20.84	1676849.33	14358970.50	39°32'27.9040"N	80°52'14.7769"W	51.12	204.057	0.36	-0.05	-5.72	
1424.00	2.880	162.590	1422.21	-42.60	-51.81	-20.06	1676850.11	14358965.37	39°32'27.8533"N	80°52'14.7670"W	55.56	201.162	1.21	-0.75	-16.97	
1518.00	1.970	115.080	1516.13	-46.08	-54.75	-17.89	1676852.28	14358962.43	39°32'27.8242"N	80°52'14.7393"W	57.60	198.092	2.26	-0.97	-50.54	
1612.00	2.300	102.020	1610.07	-48.17	-55.83	-14.58	1676855.59	14358961.36	39°32'27.8135"N	80°52'14.6971"W	57.70	194.635	0.62	0.35	-13.89	
1705.00	0.880	115.790	1703.03	-49.62	-56.53	-12.11	1676858.05	14358960.66	39°32'27.8065"N	80°52'14.6656"W	57.81	192.092	1.57	-1.63	14.81	
1799.00	0.170	354.900	1797.02	-49.99	-56.70	-11.47	1676858.69	14358960.48	39°32'27.8048"N	80°52'14.6575"W	57.85	191.439	1.04	-0.76	-128.61	
1892.00	0.370	7.610	1890.02	-49.59	-56.27	-11.45	1676858.72	14358960.92	39°32'27.8091"N	80°52'14.6571"W	57.42	191.498	0.22	0.22	13.67	
1986.00	0.360	0.110	1984.02	-49.04	-55.67	-11.40	1676858.76	14358961.51	39°32'27.8150"N	80°52'14.6566"W	56.83	191.577	0.05	-0.01	-7.98	
2079.00	0.570	32.830	2077.02	-48.48	-54.99	-11.15	1676859.01	14358962.19	39°32'27.8217"N	80°52'14.6534"W	56.11	191.465	0.36	0.23	35.18	
2173.00	0.270	3.140	2171.02	-47.98	-54.38	-10.89	1676859.28	14358962.81	39°32'27.8278"N	80°52'14.6500"W	55.45	191.322	0.38	-0.32	-31.59	
2266.00	0.690	6.920	2264.01	-47.27	-53.60	-10.81	1676859.36	14358963.58	39°32'27.8354"N	80°52'14.6490"W	54.68	191.400	0.45	0.45	4.06	
2360.00	0.380	12.630	2358.01	-46.50	-52.73	-10.67	1676859.49	14358964.45	39°32'27.8440"N	80°52'14.6472"W	53.80	191.440	0.33	-0.33	6.07	
2453.00	0.650	358.820	2451.00	-45.73	-51.91	-10.62	1676859.55	14358965.27	39°32'27.8522"N	80°52'14.6465"W	52.98	191.558	0.32	0.29	-14.85	



Actual Wellpath Report

Tygart Unit 2H AWP Proj: 22201'
Page 3 of 13



REFERENCE WELLPATH IDENTIFICATION			
Operator	ANTERO RESOURCES CORPORATION	Well	Tygart Unit 2H
Field	Tyler	API	47-095-02722-0000
Facility	Elk Fork Pad	Wellbore	Tygart Unit 2H AWB
Slot	Slot #02		

WELLPATH DATA (262 stations)																
MD	Inclination	Azimuth	TVD	Vert Sect	North	East	Grid East	Grid North	Latitude	Longitude	Closure Dist	Closure Dir	DLS	Build Rate	Turn Rate	Comments
[ft]	[°]	[°]	[ft]	[ft]	[ft]	[ft]	[US ft]	[US ft]			[ft]	[°]	["/100ft]	["/100ft]	["/100ft]	
2539.00	0.680	24.700	2537.00	-44.89	-50.96	-10.41	1676859.75	14358966.23	39°32'27.8616"N	80°52'14.6438"W	52.01	191.549	0.35	0.03	30.09	
2639.00	0.260	10.410	2636.99	-44.27	-50.19	-10.12	1676860.04	14358966.99	39°32'27.8691"N	80°52'14.6401"W	51.20	191.403	0.43	-0.42	-14.29	APS EM <8-3/4"> (2539')(2639'-5829')
2727.00	1.240	241.980	2724.99	-44.24	-50.44	-10.93	1676859.24	14358966.74	39°32'27.8666"N	80°52'14.6504"W	51.61	192.223	1.61	1.11	-145.94	
2816.00	3.330	243.410	2813.91	-44.75	-52.05	-14.09	1676856.08	14358965.13	39°32'27.8508"N	80°52'14.6908"W	53.93	195.145	2.35	2.35	1.61	
2904.00	4.870	249.140	2901.69	-45.24	-54.53	-19.87	1676850.30	14358962.65	39°32'27.8264"N	80°52'14.7646"W	58.03	200.018	1.81	1.75	6.51	
2993.00	5.990	256.880	2990.29	-44.92	-56.93	-27.92	1676842.25	14358960.26	39°32'27.8028"N	80°52'14.8674"W	63.40	206.125	1.50	1.26	8.70	
3081.00	7.070	260.880	3077.71	-43.56	-58.83	-37.74	1676832.44	14358958.36	39°32'27.7842"N	80°52'14.9928"W	69.89	212.680	1.33	1.23	4.55	
3170.00	6.990	257.910	3166.05	-42.01	-60.83	-48.44	1676821.74	14358956.35	39°32'27.7645"N	80°52'15.1294"W	77.76	218.532	0.42	-0.09	-3.34	
3258.00	8.370	264.480	3253.26	-39.92	-62.57	-60.05	1676810.13	14358954.62	39°32'27.7475"N	80°52'15.2777"W	86.72	223.825	1.86	1.57	7.47	
3347.00	10.650	264.610	3341.03	-36.53	-63.96	-74.69	1676795.50	14358953.22	39°32'27.7339"N	80°52'15.4646"W	98.34	229.424	2.56	2.56	0.15	
3435.00	13.210	265.550	3427.12	-32.16	-65.51	-92.81	1676777.38	14358951.68	39°32'27.7189"N	80°52'15.6959"W	113.60	234.786	2.92	2.91	1.07	
3523.00	15.470	264.920	3512.37	-26.89	-67.33	-114.53	1676755.67	14358949.86	39°32'27.7012"N	80°52'15.9732"W	132.85	239.551	2.57	2.57	-0.72	
3612.00	15.680	260.600	3598.11	-22.13	-70.34	-138.22	1676731.99	14358946.85	39°32'27.6718"N	80°52'16.2756"W	155.09	243.028	1.32	0.24	-4.85	
3701.00	15.330	257.390	3683.87	-18.91	-74.88	-161.57	1676708.66	14358942.31	39°32'27.6273"N	80°52'16.5737"W	178.07	245.135	1.04	-0.39	-3.61	
3794.00	13.830	249.870	3773.88	-17.85	-81.39	-184.00	1676686.23	14358935.81	39°32'27.5633"N	80°52'16.8602"W	201.20	246.140	2.59	-1.61	-8.09	
3882.00	12.410	247.590	3859.58	-18.70	-88.61	-202.62	1676667.62	14358928.58	39°32'27.4921"N	80°52'17.0980"W	221.15	246.379	1.72	-1.61	-2.59	
3971.00	13.590	250.510	3946.30	-19.44	-95.75	-221.32	1676648.93	14358921.45	39°32'27.4219"N	80°52'17.3368"W	241.14	246.606	1.52	1.33	3.28	
4059.00	13.210	247.180	4031.90	-20.28	-103.10	-240.34	1676629.92	14358914.11	39°32'27.3495"N	80°52'17.5796"W	261.51	246.782	0.98	-0.43	-3.78	
4148.00	12.130	242.970	4118.74	-22.34	-111.29	-258.04	1676612.22	14358905.92	39°32'27.2688"N	80°52'17.8057"W	281.02	246.670	1.60	-1.21	-4.73	
4236.00	11.930	240.270	4204.81	-25.40	-120.00	-274.17	1676596.10	14358897.21	39°32'27.1829"N	80°52'18.0118"W	299.29	246.362	0.68	-0.23	-3.07	
4325.00	14.570	247.850	4291.44	-27.81	-128.79	-292.53	1676577.74	14358888.43	39°32'27.0963"N	80°52'18.2464"W	319.63	246.239	3.55	2.97	8.52	
4413.00	15.990	251.390	4376.32	-28.43	-136.83	-314.28	1676556.01	14358880.39	39°32'27.0172"N	80°52'18.5240"W	342.77	246.473	1.93	1.61	4.02	
4502.00	16.980	255.680	4461.67	-27.38	-143.95	-338.49	1676531.81	14358873.26	39°32'26.9471"N	80°52'18.8332"W	367.83	246.960	1.76	1.11	4.82	
4590.00	15.580	261.800	4546.14	-24.22	-148.82	-362.64	1676507.67	14358868.40	39°32'26.8993"N	80°52'19.1415"W	391.99	247.688	2.51	-1.59	6.95	
4679.00	14.310	263.630	4632.13	-19.66	-151.74	-385.40	1676484.92	14358865.48	39°32'26.8707"N	80°52'19.4321"W	414.20	248.509	1.52	-1.43	2.06	
4767.00	13.010	258.280	4717.64	-16.11	-154.96	-405.91	1676464.42	14358862.26	39°32'26.8392"N	80°52'19.6939"W	434.48	249.105	2.06	-1.48	-6.08	
4856.00	11.900	255.140	4804.55	-14.26	-159.35	-424.59	1676445.74	14358857.87	39°32'26.7961"N	80°52'19.9324"W	453.50	249.428	1.46	-1.25	-3.53	
4944.00	12.540	253.540	4890.56	-13.25	-164.39	-442.52	1676427.82	14358852.84	39°32'26.7466"N	80°52'20.1614"W	472.06	249.621	0.82	0.73	-1.82	
5033.00	14.510	254.550	4977.08	-12.22	-170.09	-462.53	1676407.81	14358847.13	39°32'26.6905"N	80°52'20.4170"W	492.82	249.809	2.23	2.21	1.13	
5121.00	13.800	250.370	5062.41	-11.74	-176.56	-483.04	1676387.31	14358840.67	39°32'26.6269"N	80°52'20.6789"W	514.30	249.922	1.41	-0.81	-4.75	



Actual Wellpath Report

Tygart Unit 2H AWP Proj: 22201'
Page 4 of 13



REFERENCE WELLPATH IDENTIFICATION			
Operator	ANTERO RESOURCES CORPORATION	Well	Tygart Unit 2H
Field	Tyler	API	47-095-02722-0000
Facility	Elk Fork Pad	Wellbore	Tygart Unit 2H AWB
Slot	Slot #02		

WELLPATH DATA (262 stations) † = interpolated, ‡ = extrapolated station																
MD	Inclination	Azimuth	TVD	Vert Sect	North	East	Grid East	Grid North	Latitude	Longitude	Closure Dist	Closure Dir	DLS	Build Rate	Turn Rate	Comments
(ft)	(°)	(°)	(ft)	(ft)	(ft)	(ft)	(US ft)	(US ft)			(ft)	(°)	(°/100ft)	(°/100ft)	(°/100ft)	
5210.00	14.010	246.190	5148.81	-12.84	-184.47	-502.90	1676367.46	14358832.76	39°32'26.5489"N	80°52'20.9325"W	535.67	249.856	1.15	0.24	-4.70	
5298.00	15.810	240.340	5233.85	-16.04	-194.71	-523.06	1676347.31	14358822.53	39°32'26.4481"N	80°52'21.1901"W	558.13	249.583	2.66	2.05	-6.65	
5387.00	15.230	245.980	5319.61	-19.41	-205.46	-544.28	1676326.10	14358811.78	39°32'26.3420"N	80°52'21.4610"W	581.77	249.319	1.82	2.05	-6.34	
5475.00	13.580	249.850	5404.84	-20.71	-213.73	-564.54	1676305.85	14358803.52	39°32'26.2606"N	80°52'21.7198"W	603.64	249.264	2.17	-1.88	4.40	
5563.00	13.690	253.510	5490.36	-20.55	-220.24	-584.22	1676286.17	14358797.00	39°32'26.1965"N	80°52'21.9711"W	624.36	249.344	0.99	0.13	4.16	
5652.00	13.800	255.240	5576.81	-19.39	-225.94	-604.58	1676265.82	14358791.31	39°32'26.1405"N	80°52'22.2312"W	645.42	249.509	0.48	0.12	1.94	
5740.00	14.980	254.730	5662.05	-17.96	-231.61	-625.71	1676244.70	14358785.65	39°32'26.0848"N	80°52'22.5009"W	667.20	249.688	1.35	1.34	-0.58	
5829.00	14.730	253.220	5748.07	-16.86	-237.90	-647.64	1676222.78	14358779.35	39°32'26.0229"N	80°52'22.7809"W	689.95	249.830	0.52	-0.28	-1.70	
5874.00	14.150	252.720	5791.65	-16.52	-241.19	-658.37	1676212.06	14358776.07	39°32'25.9906"N	80°52'22.9179"W	701.15	249.880	1.32	-1.29	-1.11	BH AT Curve <8-1/2"> (5829')(5874'-22177')
5962.00	15.230	261.390	5876.78	-14.20	-246.12	-680.07	1676190.36	14358771.14	39°32'25.9422"N	80°52'23.1950"W	723.23	250.105	2.78	1.23	9.85	
6051.00	17.790	283.030	5962.19	-4.96	-244.80	-704.90	1676165.54	14358772.46	39°32'25.9555"N	80°52'23.5119"W	746.20	250.849	7.43	2.88	24.31	
6139.00	21.820	296.130	6045.01	13.68	-234.56	-732.70	1676137.75	14358782.70	39°32'26.0572"N	80°52'23.8667"W	769.33	252.249	6.79	4.58	14.89	
6228.00	27.380	308.210	6125.95	42.56	-214.58	-763.68	1676106.79	14358802.66	39°32'26.2550"N	80°52'24.2617"W	793.25	254.305	8.39	6.25	13.57	
6316.00	32.190	317.830	6202.35	81.08	-184.66	-795.35	1676075.13	14358832.57	39°32'26.5512"N	80°52'24.6654"W	816.51	256.929	7.69	5.47	10.93	
6364.00†	35.743	321.191	6242.15	106.00	-164.25	-812.73	1676057.76	14358852.97	39°32'26.7531"N	80°52'24.8868"W	829.16	258.574	8.37	7.40	7.00	Sycamore: 6364' MD
6405.00	38.840	323.630	6274.77	129.51	-144.56	-827.86	1676042.63	14358872.66	39°32'26.9479"N	80°52'25.0797"W	840.39	260.095	8.37	7.55	5.95	
6493.00	46.540	327.170	6339.41	186.89	-95.43	-861.60	1676008.91	14358921.77	39°32'27.4340"N	80°52'25.5094"W	866.86	263.680	9.16	8.75	4.02	
6506.00†	47.704	327.639	6348.26	196.14	-87.40	-866.73	1676003.78	14358929.80	39°32'27.5134"N	80°52'25.5747"W	871.12	264.242	9.33	8.95	3.61	Middlesex: 6506' MD
6582.00	54.540	330.080	6395.94	253.90	-36.77	-897.25	1675973.27	14358980.41	39°32'28.0143"N	80°52'25.9634"W	898.00	267.654	9.33	9.00	3.21	
6626.00	57.560	331.090	6420.51	289.76	-4.97	-915.17	1675955.36	14359012.19	39°32'28.3287"N	80°52'26.1915"W	915.18	269.689	7.12	6.86	2.30	
6652.00†	60.041	331.463	6433.97	311.67	14.53	-925.85	1675944.68	14359031.68	39°32'28.5216"N	80°52'26.3276"W	925.97	270.899	9.62	9.54	1.43	Burkett: 6652' MD
6670.00	61.760	331.710	6442.73	327.17	28.36	-933.34	1675937.20	14359045.51	39°32'28.6584"N	80°52'26.4229"W	933.77	271.741	9.62	9.55	1.37	
6689.00†	63.517	332.194	6451.46	343.83	43.25	-941.27	1675929.27	14359060.40	39°32'28.8057"N	80°52'26.5239"W	942.26	272.631	9.52	9.25	2.54	Tully: 6689' MD
6717.00	66.110	332.880	6463.37	368.87	65.74	-952.95	1675917.59	14359082.87	39°32'29.0281"N	80°52'26.6726"W	955.22	273.946	9.52	9.26	2.45	
6759.00	69.740	334.050	6479.16	407.43	100.55	-970.33	1675900.21	14359117.67	39°32'29.3724"N	80°52'26.8938"W	975.53	275.916	9.02	8.64	2.79	
6810.00†	75.037	334.611	6494.58	455.67	144.35	-991.38	1675879.18	14359161.45	39°32'29.8056"N	80°52'27.1617"W	1001.83	278.284	10.44	10.39	1.10	Marcellus POE: 6810' MD
6847.00	78.880	335.000	6502.93	491.48	176.96	-1006.72	1675863.84	14359194.05	39°32'30.1281"N	80°52'27.3569"W	1022.16	279.970	10.44	10.39	1.05	
6935.00	83.400	333.820	6516.48	577.79	255.36	-1044.27	1675826.31	14359272.42	39°32'30.9034"N	80°52'27.8348"W	1075.04	283.741	5.30	5.14	-1.34	
7024.00	87.100	333.240	6523.85	665.67	334.74	-1083.80	1675786.80	14359351.77	39°32'31.6885"N	80°52'28.3380"W	1134.31	287.164	4.21	4.16	-0.65	
7112.00	87.230	335.360	6528.20	752.92	413.93	-1121.91	1675748.70	14359430.93	39°32'32.4717"N	80°52'28.8230"W	1195.84	290.252	2.41	0.15	2.41	



Actual Wellpath Report

Tygart Unit 2H AWP Proj: 22201'
Page 5 of 13



REFERENCE WELLPATH IDENTIFICATION			
Operator	ANTERO RESOURCES CORPORATION	Well	Tygart Unit 2H
Field	Tyler	API	47-095-02722-0000
Facility	Elk Fork Pad	Wellbore	Tygart Unit 2H AWP
Slot	Slot #02		

WELLPATH DATA (262 stations)																
MD [ft]	Inclination [°]	Azimuth [°]	TVD [ft]	Vert Sect [ft]	North [ft]	East [ft]	Grid East [US ft]	Grid North [US ft]	Latitude	Longitude	Closure Dist [ft]	Closure Dir [°]	DLS [ft/100ft]	Build Rate [ft/100ft]	Turn Rate [ft/100ft]	Comments
7201.00	90.310	337.340	6530.11	841.56	495.43	-1157.60	1675713.02	14359512.39	39°32'33.2776"N	80°52'29.2771"W	1259.16	293.170	4.11	3.46	2.22	
7289.00	90.550	339.490	6529.45	929.44	577.25	-1189.97	1675680.67	14359594.18	39°32'34.0868"N	80°52'29.6889"W	1322.59	295.878	2.46	0.27	2.44	
7378.00	90.060	339.290	6528.98	1018.40	660.55	-1221.30	1675649.35	14359677.44	39°32'34.9105"N	80°52'30.0873"W	1388.49	298.407	0.59	-0.55	-0.22	
7466.00	90.950	340.930	6528.20	1106.37	743.29	-1251.23	1675619.43	14359760.16	39°32'35.7287"N	80°52'30.4679"W	1455.36	300.712	2.12	1.01	1.86	
7555.00	90.000	340.550	6527.47	1195.36	827.31	-1280.59	1675590.08	14359844.14	39°32'36.5594"N	80°52'30.8412"W	1524.58	302.864	1.15	-1.07	-0.43	
7643.00	90.310	340.590	6527.23	1283.36	910.30	-1309.86	1675560.82	14359927.09	39°32'37.3800"N	80°52'31.2134"W	1595.11	304.798	0.36	0.35	0.05	
7732.00	90.090	340.000	6526.92	1372.35	994.08	-1339.87	1675530.82	14360010.84	39°32'38.2085"N	80°52'31.5949"W	1668.37	306.573	0.71	-0.25	-0.66	
7820.00	90.980	339.470	6526.09	1460.31	1076.63	-1370.35	1675500.36	14360093.36	39°32'39.0248"N	80°52'31.9825"W	1742.70	308.155	1.18	1.01	-0.60	
7909.00	91.450	341.890	6524.21	1549.28	1160.59	-1399.79	1675470.93	14360177.29	39°32'39.8550"N	80°52'32.3568"W	1818.35	309.663	2.77	0.53	2.72	
7997.00	91.050	340.770	6522.29	1637.26	1243.94	-1427.95	1675442.78	14360260.60	39°32'40.6791"N	80°52'32.7148"W	1893.79	311.060	1.35	-0.45	-1.27	
8086.00	90.650	341.460	6520.97	1726.25	1328.14	-1456.75	1675413.99	14360344.77	39°32'41.5117"N	80°52'33.0810"W	1971.32	312.356	0.90	-0.45	0.78	
8174.00	90.860	342.110	6519.81	1814.23	1411.72	-1484.26	1675386.50	14360428.32	39°32'42.3381"N	80°52'33.4306"W	2048.41	313.565	0.78	0.24	0.74	
8263.00	90.680	341.600	6518.61	1903.22	1496.29	-1511.97	1675358.79	14360512.85	39°32'43.1743"N	80°52'33.7829"W	2127.19	314.701	0.61	-0.20	-0.57	
8351.00	90.740	340.220	6517.52	1991.21	1579.44	-1540.75	1675330.03	14360595.97	39°32'43.9965"N	80°52'34.1488"W	2206.48	315.710	1.57	0.07	-1.57	
8440.00	90.920	342.120	6516.23	2080.20	1663.67	-1569.47	1675301.32	14360680.16	39°32'44.8293"N	80°52'34.5140"W	2287.14	316.669	2.14	0.20	2.13	
8528.00	90.740	341.640	6514.96	2168.18	1747.29	-1596.84	1675273.96	14360763.75	39°32'45.6562"N	80°52'34.8618"W	2367.05	317.576	0.58	-0.20	-0.55	
8617.00	90.310	340.830	6514.14	2257.18	1831.56	-1625.47	1675245.35	14360847.98	39°32'46.4894"N	80°52'35.2258"W	2448.82	318.412	1.03	-0.48	-0.91	
8705.00	89.170	340.790	6514.54	2345.17	1914.67	-1654.39	1675216.43	14360931.06	39°32'47.3112"N	80°52'35.5936"W	2530.40	319.171	1.30	-1.30	-0.05	
8794.00	90.460	341.740	6514.83	2434.17	1998.95	-1682.97	1675187.86	14361015.31	39°32'48.1445"N	80°52'35.9570"W	2613.08	319.905	1.80	1.45	1.07	
8882.00	90.400	342.920	6514.17	2522.15	2082.79	-1709.68	1675161.16	14361099.12	39°32'48.9735"N	80°52'36.2965"W	2694.63	320.619	1.34	-0.07	1.34	
8971.00	90.250	341.450	6513.66	2611.13	2167.52	-1736.91	1675133.94	14361183.81	39°32'49.8113"N	80°52'36.6426"W	2777.59	321.294	1.66	-0.17	-1.65	
9059.00	89.820	342.490	6513.61	2699.12	2251.20	-1764.15	1675106.72	14361267.46	39°32'50.6387"N	80°52'36.9888"W	2860.09	321.916	1.28	-0.49	1.18	
9148.00	90.740	340.570	6513.17	2788.12	2335.61	-1792.34	1675078.53	14361351.83	39°32'51.4733"N	80°52'37.3472"W	2944.07	322.497	2.39	1.03	-2.16	
9236.00	89.260	340.940	6513.17	2876.11	2418.69	-1821.35	1675049.54	14361434.88	39°32'52.2948"N	80°52'37.7161"W	3027.76	323.019	1.73	-1.68	0.42	
9325.00	90.920	342.730	6513.03	2965.10	2503.24	-1849.09	1675021.81	14361519.40	39°32'53.1309"N	80°52'38.0688"W	3112.13	323.548	2.74	1.87	2.01	
9413.00	90.620	342.180	6511.85	3053.07	2587.14	-1875.62	1674995.29	14361603.27	39°32'53.9604"N	80°52'38.4059"W	3195.50	324.059	0.71	-0.34	-0.63	
9501.00	90.460	341.740	6511.02	3141.06	2670.81	-1902.87	1674968.05	14361686.90	39°32'54.7877"N	80°52'38.7523"W	3279.35	324.531	0.53	-0.18	-0.50	
9590.00	89.510	342.290	6511.05	3230.05	2755.46	-1930.35	1674940.58	14361771.52	39°32'55.6247"N	80°52'39.1016"W	3364.35	324.987	1.23	-1.07	0.62	
9678.00	88.680	340.560	6512.44	3318.03	2838.86	-1958.38	1674912.57	14361854.89	39°32'56.4494"N	80°52'39.4580"W	3448.82	325.400	2.18	-0.94	-1.97	
9767.00	90.620	341.200	6512.98	3407.03	2922.95	-1987.52	1674883.43	14361938.84	39°32'57.2808"N	80°52'39.8285"W	3534.67	325.785	2.30	2.18	0.72	



Actual Wellpath Report

Tygart Unit 2H AWP Proj: 22201'

Page 6 of 13



REFERENCE WELLPATH IDENTIFICATION

Operator	ANTERO RESOURCES CORPORATION	Well	Tygart Unit 2H
Field	Tyler	API	47-095-02722-0000
Facility	Elk Fork Pad	Wellbore	Tygart Unit 2H AWB
Slot	Slot #02		

WELLPATH DATA (262 stations)

MD [ft]	Inclination [°]	Azimuth [°]	TVD [ft]	Vert Sect [ft]	North [ft]	East [ft]	Grid East [US ft]	Grid North [US ft]	Latitude	Longitude	Closure Dist [ft]	Closure Dir [°]	DLS [°/100ft]	Build Rate [°/100ft]	Turn Rate [°/100ft]	Comments
9855.00	90.860	341.650	6511.84	3495.02	3006.36	-2015.55	1674855.41	14362022.31	39°32'58.1055"N	80°52'40.1850"W	3619.48	326.161	0.58	0.27	0.51	
9944.00	91.910	341.600	6509.69	3583.99	3090.79	-2043.60	1674827.38	14362106.72	39°32'58.9404"N	80°52'40.5416"W	3705.31	326.528	1.18	1.18	-0.06	
10032.00	90.980	342.170	6507.47	3671.95	3174.40	-2070.95	1674800.04	14362190.29	39°32'59.7671"N	80°52'40.8893"W	3790.21	326.880	1.24	-1.06	0.65	
10121.00	89.940	336.860	6506.76	3760.88	3257.74	-2102.09	1674768.91	14362273.60	39°33'0.5912"N	80°52'41.2853"W	3877.07	327.167	6.08	-1.17	-5.97	
10209.00	90.060	335.010	6506.76	3848.50	3338.09	-2137.97	1674733.05	14362353.91	39°33'1.3658"N	80°52'41.7420"W	3964.06	327.361	2.11	0.14	-2.10	
10298.00	90.280	337.330	6506.49	3937.14	3419.50	-2173.93	1674697.10	14362435.29	39°33'2.1908"N	80°52'42.1996"W	4052.03	327.554	2.62	0.25	2.61	
10386.00	90.580	339.970	6505.83	4025.04	3501.45	-2205.96	1674665.08	14362517.21	39°33'3.0012"N	80°52'42.6072"W	4138.41	327.789	3.02	0.34	3.00	
10474.00	90.920	341.260	6504.68	4113.03	3584.45	-2235.17	1674635.89	14362600.17	39°33'3.8219"N	80°52'42.9786"W	4224.25	328.053	1.52	0.39	1.47	
10563.00	91.170	340.890	6503.06	4202.02	3668.62	-2264.03	1674607.04	14362684.32	39°33'4.6542"N	80°52'43.3456"W	4310.99	328.320	0.50	0.28	-0.42	
10652.00	89.720	337.480	6502.37	4290.94	3751.80	-2295.65	1674575.43	14362767.46	39°33'5.4767"N	80°52'43.7478"W	4398.41	328.538	4.16	-1.63	-3.83	
10740.00	91.050	341.380	6501.77	4378.88	3834.17	-2326.56	1674544.53	14362849.79	39°33'6.2912"N	80°52'44.1410"W	4484.83	328.751	4.68	1.51	4.43	
10828.00	90.180	341.570	6500.83	4466.87	3917.60	-2354.52	1674516.59	14362933.19	39°33'7.1161"N	80°52'44.4965"W	4570.71	328.994	1.01	-0.99	0.22	
10917.00	90.490	339.760	6500.31	4555.86	4001.58	-2383.98	1674487.13	14363017.14	39°33'7.9465"N	80°52'44.8712"W	4657.90	329.215	2.06	0.35	-2.03	
11005.00	91.020	340.900	6499.15	4643.84	4084.43	-2413.60	1674457.53	14363099.96	39°33'8.7658"N	80°52'45.2479"W	4744.27	329.420	1.43	0.60	1.30	
11094.00	90.180	340.220	6498.22	4732.83	4168.35	-2443.22	1674427.92	14363183.85	39°33'9.5956"N	80°52'45.6246"W	4831.61	329.624	1.21	-0.94	-0.76	
11182.00	91.200	342.190	6497.16	4820.81	4251.65	-2471.57	1674399.58	14363267.11	39°33'10.4192"N	80°52'45.9851"W	4917.84	329.830	2.52	1.16	2.24	
11271.00	90.460	342.380	6495.87	4909.79	4336.42	-2498.64	1674372.52	14363351.84	39°33'11.2573"N	80°52'46.3293"W	5004.77	330.049	0.86	-0.83	0.21	
11359.00	90.980	341.490	6494.76	4997.78	4420.08	-2525.93	1674345.24	14363435.47	39°33'12.0845"N	80°52'46.6762"W	5090.91	330.253	1.17	0.59	-1.01	
11447.00	90.340	342.810	6493.75	5085.76	4503.83	-2552.90	1674318.28	14363519.19	39°33'12.9126"N	80°52'47.0191"W	5177.05	330.454	1.67	-0.73	1.50	
11536.00	90.340	342.130	6493.22	5174.73	4588.70	-2579.71	1674291.49	14363604.02	39°33'13.7517"N	80°52'47.3599"W	5264.13	330.656	0.76	0.00	-0.76	
11624.00	90.400	343.230	6492.65	5262.70	4672.70	-2605.91	1674265.30	14363687.99	39°33'14.5823"N	80°52'47.6929"W	5350.22	330.852	1.25	0.07	1.25	
11712.00	90.340	342.320	6492.09	5350.67	4756.75	-2631.96	1674239.25	14363772.01	39°33'15.4134"N	80°52'48.0242"W	5436.35	331.044	1.04	-0.07	-1.03	
11801.00	90.030	341.830	6491.80	5439.66	4841.43	-2659.36	1674211.87	14363856.65	39°33'16.2506"N	80°52'48.3724"W	5523.73	331.220	0.65	-0.35	-0.55	
11889.00	90.340	342.300	6491.51	5527.65	4925.16	-2686.45	1674184.78	14363940.34	39°33'17.0784"N	80°52'48.7170"W	5610.19	331.389	0.64	0.35	0.53	
11978.00	90.400	341.590	6490.94	5616.64	5009.77	-2714.04	1674157.21	14364024.92	39°33'17.9151"N	80°52'49.0677"W	5697.70	331.553	0.80	0.07	-0.80	
12066.00	90.650	342.810	6490.13	5704.62	5093.55	-2740.94	1674130.32	14364108.67	39°33'18.7435"N	80°52'49.4097"W	5784.20	331.714	1.42	0.28	1.39	
12155.00	90.120	341.410	6489.53	5793.60	5178.25	-2768.27	1674102.99	14364193.33	39°33'19.5809"N	80°52'49.7573"W	5871.76	331.871	1.68	-0.60	-1.57	
12243.00	90.310	342.760	6489.20	5881.59	5261.98	-2795.34	1674075.94	14364277.03	39°33'20.4087"N	80°52'50.1014"W	5958.38	332.021	1.55	0.22	1.53	
12331.00	90.090	341.900	6488.90	5969.57	5345.82	-2822.05	1674049.24	14364360.84	39°33'21.2378"N	80°52'50.4410"W	6044.98	332.170	1.01	-0.25	-0.98	
12420.00	90.310	341.670	6488.59	6058.57	5430.36	-2849.87	1674021.43	14364445.35	39°33'22.0737"N	80°52'50.7948"W	6132.75	332.309	0.36	0.25	-0.26	



Actual Wellpath Report

Tygart Unit 2H AWP Proj: 22201'
Page 7 of 13



REFERENCE WELLPATH IDENTIFICATION			
Operator	ANTERO RESOURCES CORPORATION	Well	Tygart Unit 2H
Field	Tyler	API	47-095-02722-0000
Facility	Elk Fork Pad	Wellbore	Tygart Unit 2H AWP
Slot	Slot #02		

WELLPATH DATA (262 stations)																
MD (ft)	Inclination (°)	Azimuth (°)	TVD (ft)	Vert Sect (ft)	North (ft)	East (ft)	Grid East (US ft)	Grid North (US ft)	Latitude	Longitude	Closure Dist (ft)	Closure Dir (°)	DLS ("/100ft)	Build Rate ("/100ft)	Turn Rate ("/100ft)	Comments
12508.00	90.150	340.940	6488.23	6146.57	5513.72	-2878.08	1673993.23	14364528.67	39°33'22.8979"N	80°52'51.1535"W	6219.68	332.436	0.85	-0.18	-0.83	
12597.00	90.060	342.770	6488.07	6235.56	5598.29	-2905.79	1673965.53	14364613.21	39°33'23.7341"N	80°52'51.5059"W	6307.49	332.568	2.06	-0.10	2.06	
12685.00	90.250	341.860	6487.83	6323.54	5682.13	-2932.53	1673938.81	14364697.01	39°33'24.5630"N	80°52'51.8458"W	6394.24	332.702	1.06	0.22	-1.03	
12774.00	90.650	342.940	6487.13	6412.52	5766.96	-2959.44	1673911.91	14364781.81	39°33'25.4018"N	80°52'52.1879"W	6481.98	332.834	1.29	0.45	1.21	
12862.00	90.400	342.310	6486.33	6500.49	5850.94	-2985.71	1673885.64	14364865.76	39°33'26.2321"N	80°52'52.5220"W	6568.71	332.965	0.77	-0.28	-0.72	
12950.00	90.550	342.010	6485.60	6588.47	5934.71	-3012.67	1673858.69	14364949.49	39°33'27.0603"N	80°52'52.8647"W	6655.59	333.086	0.38	0.17	-0.34	
13039.00	89.940	341.460	6485.22	6677.47	6019.22	-3040.57	1673830.81	14365033.97	39°33'27.8960"N	80°52'53.2194"W	6743.59	333.200	0.92	-0.69	-0.62	
13127.00	89.970	342.810	6485.29	6765.45	6102.97	-3067.56	1673803.83	14365117.69	39°33'28.7241"N	80°52'53.5627"W	6830.54	333.314	1.53	0.03	1.53	
13216.00	89.970	342.670	6485.33	6854.42	6187.97	-3093.97	1673777.43	14365202.65	39°33'29.5644"N	80°52'53.8984"W	6918.35	333.435	0.16	0.00	-0.16	
13304.00	89.970	342.240	6485.38	6942.40	6271.87	-3120.50	1673750.91	14365286.52	39°33'30.3941"N	80°52'54.2357"W	7005.28	333.548	0.49	0.00	-0.49	
13393.00	90.220	342.690	6485.23	7031.38	6356.74	-3147.31	1673724.11	14365371.35	39°33'31.2331"N	80°52'54.5766"W	7093.21	333.659	0.58	0.28	0.51	
13481.00	90.800	342.890	6484.45	7119.35	6440.79	-3173.35	1673698.08	14365455.37	39°33'32.0642"N	80°52'54.9076"W	7180.11	333.771	0.70	0.66	0.23	
13569.00	91.140	342.580	6482.96	7207.30	6524.82	-3199.46	1673671.98	14365539.36	39°33'32.8950"N	80°52'55.2396"W	7267.03	333.879	0.52	0.39	-0.35	
13658.00	90.620	341.980	6481.59	7296.28	6609.58	-3226.55	1673644.91	14365624.10	39°33'33.7331"N	80°52'55.5840"W	7355.08	333.980	0.89	-0.58	-0.67	
13746.00	90.990	341.070	6480.35	7384.27	6693.04	-3254.43	1673617.03	14365707.52	39°33'34.5583"N	80°52'55.9386"W	7442.32	334.069	1.12	0.42	-1.03	
13835.00	91.940	342.560	6478.08	7473.23	6777.56	-3282.20	1673589.28	14365792.01	39°33'35.3940"N	80°52'56.2917"W	7530.48	334.160	1.99	1.07	1.67	
13923.00	91.720	342.530	6475.27	7561.16	6861.47	-3308.58	1673562.91	14365875.88	39°33'36.2236"N	80°52'56.6272"W	7617.51	334.257	0.25	-0.25	-0.03	
14012.00	91.660	343.370	6472.64	7650.08	6946.52	-3334.66	1673536.83	14365960.90	39°33'37.0645"N	80°52'56.9588"W	7705.46	334.357	0.95	-0.07	0.94	
14100.00	91.850	342.630	6469.95	7738.00	7030.63	-3360.38	1673511.13	14366044.98	39°33'37.8962"N	80°52'57.2857"W	7792.43	334.454	0.87	0.22	-0.84	
14188.00	91.380	341.660	6467.47	7825.95	7114.36	-3387.35	1673484.17	14366128.67	39°33'38.7240"N	80°52'57.6287"W	7879.61	334.540	1.22	-0.53	-1.10	
14277.00	91.570	339.770	6465.18	7914.91	7198.33	-3416.73	1673454.80	14366212.61	39°33'39.5543"N	80°52'58.0024"W	7968.06	334.608	2.13	0.21	-2.12	
14365.00	91.790	340.270	6462.60	8002.85	7281.00	-3446.79	1673424.75	14366295.24	39°33'40.3717"N	80°52'58.3848"W	8055.64	334.667	0.62	0.25	0.57	
14454.00	91.630	340.130	6459.94	8091.80	7364.70	-3476.92	1673394.63	14366378.91	39°33'41.1994"N	80°52'58.7682"W	8144.19	334.728	0.24	-0.18	-0.16	
14542.00	90.340	339.930	6458.43	8179.77	7447.40	-3506.97	1673364.69	14366461.57	39°33'42.0170"N	80°52'59.1505"W	8231.80	334.784	1.48	-1.47	-0.23	
14631.00	90.060	338.490	6458.12	8268.71	7530.60	-3538.56	1673333.02	14366544.74	39°33'42.8398"N	80°52'59.5524"W	8320.54	334.832	1.65	-0.31	-1.62	
14719.00	90.090	340.440	6458.00	8356.66	7613.00	-3569.43	1673302.16	14366627.11	39°33'43.6546"N	80°52'59.9452"W	8408.25	334.880	2.22	0.03	2.22	
14808.00	89.850	339.860	6458.05	8445.65	7696.71	-3599.65	1673271.95	14366710.79	39°33'44.4823"N	80°53'0.3296"W	8496.87	334.935	0.71	-0.27	-0.65	
14896.00	90.090	339.740	6458.10	8533.62	7779.30	-3630.03	1673241.58	14366793.35	39°33'45.2989"N	80°53'0.7163"W	8584.56	334.985	0.30	0.27	-0.14	
14985.00	90.310	340.180	6457.79	8622.60	7862.91	-3660.53	1673211.09	14366876.92	39°33'46.1257"N	80°53'1.1043"W	8673.23	335.036	0.55	0.25	0.49	
15073.00	90.250	340.260	6457.35	8710.58	7945.72	-3690.31	1673181.33	14366959.70	39°33'46.9444"N	80°53'1.4831"W	8760.87	335.088	0.11	-0.07	0.09	



Actual Wellpath Report

Tygart Unit 2H AWP Proj: 22201'
Page 8 of 13



REFERENCE WELLPATH IDENTIFICATION			
Operator	ANTERO RESOURCES CORPORATION	Well	Tygart Unit 2H
Field	Tyler	API	47-095-02722-0000
Facility	Elk Fork Pad	Wellbore	Tygart Unit 2H AWP
Slot	Slot #02		

WELLPATH DATA (262 stations)																
MD	Inclination	Azimuth	TVD	Vert Sect	North	East	Grid East	Grid North	Latitude	Longitude	Closure Dist	Closure Dir	DLS	Build Rate	Turn Rate	Comments
[ft]	[°]	[°]	[ft]	[ft]	[ft]	[ft]	[US ft]	[US ft]			[ft]	[°]	[°/100ft]	[°/100ft]	[°/100ft]	
15161.00	90.400	340.720	6456.86	8798.57	8028.66	-3719.70	1673151.95	14367042.61	39°33'47.7646"N	80°53'1.8570"W	8848.48	335.142	0.55	0.17	0.52	
15250.00	90.000	340.570	6456.55	8887.57	8112.63	-3749.20	1673122.46	14367126.55	39°33'48.5949"N	80°53'2.2323"W	8937.08	335.196	0.48	-0.45	-0.17	
15338.00	90.220	340.310	6456.38	8975.56	8195.56	-3778.66	1673093.01	14367209.43	39°33'49.4148"N	80°53'2.6071"W	9024.71	335.247	0.39	0.25	-0.30	
15427.00	90.460	340.170	6455.85	9064.54	8279.31	-3808.75	1673062.94	14367293.16	39°33'50.2429"N	80°53'2.9899"W	9113.37	335.296	0.31	0.27	-0.16	
15515.00	90.490	340.650	6455.12	9152.53	8362.22	-3838.25	1673033.45	14367376.03	39°33'51.0627"N	80°53'3.3652"W	9201.02	335.345	0.55	0.03	0.55	
15604.00	90.280	340.420	6454.52	9241.52	8446.13	-3867.91	1673003.80	14367459.91	39°33'51.8924"N	80°53'3.7425"W	9289.66	335.395	0.35	-0.24	-0.26	
15692.00	90.890	340.150	6453.62	9329.50	8528.96	-3897.59	1672974.13	14367542.71	39°33'52.7114"N	80°53'4.1202"W	9377.34	335.440	0.76	0.69	-0.31	
15781.00	90.620	340.260	6452.45	9418.48	8612.70	-3927.73	1672944.00	14367626.41	39°33'53.5394"N	80°53'4.5036"W	9466.03	335.485	0.33	-0.30	0.12	
15869.00	90.710	339.900	6451.43	9506.46	8695.43	-3957.71	1672914.03	14367709.11	39°33'54.3574"N	80°53'4.8851"W	9553.74	335.527	0.42	0.10	-0.41	
15957.00	90.980	340.470	6450.13	9594.43	8778.21	-3987.54	1672884.22	14367791.85	39°33'55.1759"N	80°53'5.2646"W	9641.44	335.570	0.72	0.31	0.65	
16046.00	90.580	338.970	6448.92	9683.39	8861.68	-4018.38	1672853.39	14367875.29	39°33'56.0013"N	80°53'5.6571"W	9730.20	335.608	1.74	-0.45	-1.69	
16134.00	89.780	338.610	6448.64	9771.31	8943.72	-4050.22	1672821.56	14367957.30	39°33'56.8125"N	80°53'6.0623"W	9818.06	335.636	1.00	-0.91	-0.41	
16223.00	90.400	340.610	6448.50	9860.27	9027.14	-4081.23	1672790.57	14368040.68	39°33'57.6373"N	80°53'6.4568"W	9906.85	335.672	2.35	0.70	2.25	
16311.00	90.340	340.190	6447.93	9948.26	9110.04	-4110.74	1672761.06	14368123.55	39°33'58.4570"N	80°53'6.8324"W	9994.55	335.714	0.48	-0.07	-0.48	
16399.00	89.290	340.590	6448.22	10036.25	9192.93	-4140.28	1672731.54	14368206.41	39°33'59.2766"N	80°53'7.2081"W	10082.26	335.754	1.28	-1.19	0.45	
16488.00	90.280	342.620	6448.55	10125.24	9277.38	-4168.36	1672703.47	14368290.82	39°34'0.1116"N	80°53'7.5654"W	10170.79	335.805	2.54	1.11	2.28	
16577.00	90.250	342.710	6448.14	10214.21	9362.33	-4194.88	1672676.96	14368375.74	39°34'0.9516"N	80°53'7.9026"W	10259.16	335.865	0.11	-0.03	0.10	
16665.00	90.340	342.240	6447.69	10302.19	9446.25	-4221.38	1672650.47	14368459.62	39°34'1.7813"N	80°53'8.2396"W	10346.58	335.921	0.54	0.10	-0.53	
16753.00	90.000	342.330	6447.43	10390.17	9530.07	-4248.15	1672623.71	14368543.42	39°34'2.6101"N	80°53'8.5801"W	10434.04	335.974	0.40	-0.39	0.10	
16842.00	90.000	341.970	6447.43	10479.16	9614.79	-4275.44	1672596.44	14368628.10	39°34'3.4477"N	80°53'8.9271"W	10522.52	336.027	0.40	0.00	-0.40	
16930.00	90.370	342.310	6447.14	10567.15	9698.55	-4302.42	1672569.46	14368711.82	39°34'4.2758"N	80°53'9.2704"W	10610.03	336.077	0.57	0.42	0.39	
17019.00	89.880	342.480	6446.95	10656.13	9783.38	-4329.34	1672542.55	14368796.62	39°34'5.1146"N	80°53'9.6127"W	10698.49	336.130	0.58	-0.55	0.19	
17107.00	90.370	342.590	6446.76	10744.11	9867.32	-4355.75	1672516.15	14368880.53	39°34'5.9445"N	80°53'9.9486"W	10785.95	336.182	0.57	0.56	0.12	
17196.00	90.150	342.500	6446.35	10833.08	9952.22	-4382.45	1672489.47	14368965.40	39°34'6.7840"N	80°53'10.2881"W	10874.40	336.234	0.27	-0.25	-0.10	
17285.00	90.550	341.140	6445.81	10922.07	10036.78	-4410.22	1672461.71	14369049.92	39°34'7.6200"N	80°53'10.6413"W	10962.98	336.279	1.59	0.45	-1.53	
17373.00	90.620	342.780	6444.91	11010.06	10120.44	-4437.47	1672434.47	14369133.55	39°34'8.4472"N	80°53'10.9879"W	11050.54	336.324	1.87	0.08	1.86	
17461.00	90.280	341.720	6444.22	11098.04	10204.25	-4464.29	1672407.66	14369217.32	39°34'9.2758"N	80°53'11.3292"W	11138.07	336.371	1.26	-0.39	-1.20	
17550.00	90.490	343.950	6443.62	11187.00	10289.28	-4490.56	1672381.40	14369302.32	39°34'10.1165"N	80°53'11.6632"W	11226.50	336.422	2.52	0.24	2.51	
17638.00	89.820	341.520	6443.38	11274.96	10373.31	-4516.67	1672355.30	14369386.31	39°34'10.9473"N	80°53'11.9953"W	11313.97	336.471	2.86	-0.76	-2.76	
17727.00	90.830	342.170	6442.88	11363.95	10457.87	-4544.40	1672327.58	14369470.84	39°34'11.7834"N	80°53'12.3480"W	11402.57	336.513	1.35	1.13	0.73	



Actual Wellpath Report

Tygart Unit 2H AWP Proj: 22201'
Page 9 of 13



REFERENCE WELLPATH IDENTIFICATION			
Operator	ANTERO RESOURCES CORPORATION	Well	Tygart Unit 2H
Field	Tyler	API	47-095-02722-0000
Facility	Elk Fork Pad	Wellbore	Tygart Unit 2H AWP
Slot	Slot #02		

WELLPATH DATA (262 stations)																
MD	Inclination	Azimuth	TVD	Vert Sect	North	East	Grid East	Grid North	Latitude	Longitude	Closure Dist	Closure Dir	DLS	Build Rate	Turn Rate	Comments
[ft]	[°]	[°]	[ft]	[ft]	[ft]	[ft]	[US ft]	[US ft]			[ft]	[°]	[°/100ft]	[°/100ft]	[°/100ft]	
17815.00	89.230	341.340	6442.83	11451.95	10541.45	-4571.95	1672300.04	14369554.38	39°34'12.6097"N	80°53'12.6985"W	11490.20	336.553	2.05	-1.82	-0.94	
17904.00	90.280	341.320	6443.21	11540.94	10625.76	-4600.44	1672271.56	14369638.66	39°34'13.4434"N	80°53'13.0609"W	11578.90	336.590	1.18	1.18	-0.02	
17992.00	89.750	340.980	6443.19	11628.94	10709.04	-4628.87	1672243.14	14369721.91	39°34'14.2668"N	80°53'13.4227"W	11666.62	336.624	0.72	-0.60	-0.39	
18081.00	90.030	342.260	6443.36	11717.94	10793.50	-4656.94	1672215.09	14369806.34	39°34'15.1019"N	80°53'13.7797"W	11755.28	336.662	1.47	0.31	1.44	
18169.00	89.910	341.480	6443.41	11805.93	10877.13	-4684.32	1672187.72	14369889.93	39°34'15.9288"N	80°53'14.1280"W	11842.92	336.700	0.90	-0.14	-0.89	
18258.00	89.780	340.720	6443.65	11894.93	10961.33	-4713.15	1672158.90	14369974.10	39°34'16.7613"N	80°53'14.4948"W	11931.66	336.733	0.87	-0.15	-0.85	
18346.00	90.400	341.410	6443.51	11982.93	11044.57	-4741.70	1672130.36	14370057.30	39°34'17.5843"N	80°53'14.8581"W	12019.41	336.765	1.05	0.70	0.78	
18435.00	90.030	341.130	6443.17	12071.93	11128.85	-4770.28	1672101.79	14370141.55	39°34'18.4177"N	80°53'15.2217"W	12108.13	336.798	0.52	-0.42	-0.31	
18523.00	90.650	342.250	6442.65	12159.92	11212.39	-4797.93	1672074.16	14370225.06	39°34'19.2437"N	80°53'15.5734"W	12195.81	336.833	1.45	0.70	1.27	
18612.00	90.030	341.550	6442.12	12248.91	11296.99	-4825.58	1672046.52	14370309.62	39°34'20.0801"N	80°53'15.9251"W	12284.47	336.870	1.05	-0.70	-0.79	
18700.00	89.910	340.950	6442.17	12336.91	11380.32	-4853.86	1672018.24	14370392.92	39°34'20.9040"N	80°53'16.2850"W	12372.21	336.901	0.70	-0.14	-0.68	
18789.00	89.570	340.380	6442.57	12425.91	11464.29	-4883.33	1671988.79	14370476.86	39°34'21.7343"N	80°53'16.6600"W	12461.02	336.928	0.75	-0.38	-0.64	
18877.00	90.400	341.900	6442.60	12513.90	11547.57	-4911.77	1671960.35	14370560.10	39°34'22.5577"N	80°53'17.0219"W	12548.78	336.957	1.97	0.94	1.73	
18966.00	89.230	341.070	6442.88	12602.90	11631.96	-4940.04	1671932.10	14370644.46	39°34'23.3921"N	80°53'17.3815"W	12637.50	336.989	1.61	-1.31	-0.93	
19054.00	89.450	341.220	6443.90	12690.89	11715.23	-4968.47	1671903.68	14370727.70	39°34'24.2154"N	80°53'17.7433"W	12725.26	337.018	0.30	0.25	0.17	
19143.00	89.420	341.260	6444.78	12779.89	11799.50	-4997.09	1671875.07	14370811.93	39°34'25.0486"N	80°53'18.1074"W	12814.02	337.047	0.06	-0.03	0.04	
19231.00	90.490	343.000	6444.85	12867.87	11883.25	-5024.10	1671848.08	14370895.65	39°34'25.8767"N	80°53'18.4509"W	12901.67	337.082	2.32	1.22	1.98	
19320.00	89.200	341.040	6445.09	12956.86	11967.90	-5051.57	1671820.62	14370980.26	39°34'26.7136"N	80°53'18.8004"W	12990.34	337.116	2.64	-1.45	-2.20	
19408.00	90.280	341.570	6445.49	13044.86	12051.25	-5079.77	1671792.42	14371063.58	39°34'27.5378"N	80°53'19.1593"W	13078.10	337.144	1.37	1.23	0.60	
19497.00	89.780	340.000	6445.44	13133.85	12135.29	-5109.06	1671763.14	14371147.59	39°34'28.3687"N	80°53'19.5320"W	13166.92	337.168	1.85	-0.56	-1.76	
19585.00	90.090	340.950	6445.54	13221.84	12218.23	-5138.47	1671733.74	14371230.49	39°34'29.1887"N	80°53'19.9063"W	13254.77	337.190	1.14	0.35	1.08	
19674.00	90.520	342.060	6445.06	13310.84	12302.63	-5166.71	1671705.52	14371314.86	39°34'30.0232"N	80°53'20.2655"W	13343.52	337.219	1.34	0.48	1.25	
19762.00	89.780	340.640	6444.83	13398.84	12386.00	-5194.85	1671677.39	14371398.20	39°34'30.8476"N	80°53'20.6235"W	13431.29	337.246	1.82	-0.84	-1.61	
19851.00	90.000	340.620	6445.01	13487.83	12469.97	-5224.36	1671647.89	14371482.13	39°34'31.6778"N	80°53'20.9992"W	13520.13	337.268	0.25	0.25	-0.02	
19939.00	90.000	341.450	6445.01	13575.83	12553.19	-5252.96	1671619.30	14371565.32	39°34'32.5006"N	80°53'21.3631"W	13607.94	337.293	0.94	0.00	0.94	
20028.00	89.570	339.390	6445.34	13664.81	12637.04	-5282.79	1671589.49	14371649.14	39°34'33.3297"N	80°53'21.7427"W	13696.81	337.313	2.36	-0.48	-2.31	
20116.00	89.820	340.940	6445.81	13752.80	12719.81	-5312.65	1671559.64	14371731.88	39°34'34.1481"N	80°53'22.1227"W	13784.70	337.331	1.78	0.28	1.76	
20205.00	89.720	337.990	6446.16	13841.74	12803.15	-5343.86	1671528.44	14371815.18	39°34'34.9721"N	80°53'22.5200"W	13873.62	337.345	3.32	-0.11	-3.31	
20293.00	89.450	339.560	6446.80	13929.66	12885.17	-5375.72	1671496.59	14371897.17	39°34'35.7832"N	80°53'22.9256"W	13961.59	337.354	1.81	-0.31	1.78	
20382.00	89.540	341.550	6447.59	14018.64	12969.09	-5405.34	1671466.98	14371981.06	39°34'36.6129"N	80°53'23.3026"W	14050.45	337.374	2.24	0.10	2.24	



Actual Wellpath Report

Tygart Unit 2H AWP Proj: 22201'
Page 10 of 13



REFERENCE WELLPATH IDENTIFICATION

Operator	ANTERO RESOURCES CORPORATION	Well	Tygart Unit 2H
Field	Tyler	API	47-095-02722-0000
Facility	Elk Fork Pad	Wellbore	Tygart Unit 2H AWB
Slot	Slot #02		

WELLPATH DATA (262 stations) † = interpolated, ‡ = extrapolated station

MD [ft]	Inclination [°]	Azimuth [°]	TVD [ft]	Vert Sect [ft]	North [ft]	East [ft]	Grid East [US ft]	Grid North [US ft]	Latitude	Longitude	Closure Dist [ft]	Closure Dir [°]	DLS [°/100ft]	Build Rate [°/100ft]	Turn Rate [°/100ft]	Comments
20470.00	89.290	339.550	6448.49	14106.63	13052.06	-5434.64	1671437.69	14372063.99	39°34'37.4333"N	80°53'23.6755"W	14138.30	337.394	2.29	-0.28	-2.27	
20559.00	90.060	340.880	6448.99	14195.61	13135.80	-5464.77	1671407.58	14372147.70	39°34'38.2613"N	80°53'24.0589"W	14227.19	337.412	1.73	0.87	1.49	
20647.00	89.380	341.570	6449.42	14283.61	13219.12	-5493.09	1671379.27	14372230.98	39°34'39.0851"N	80°53'24.4193"W	14314.99	337.435	1.10	-0.77	0.78	
20736.00	89.230	341.180	6450.50	14372.60	13303.45	-5521.51	1671350.86	14372315.28	39°34'39.9189"N	80°53'24.7809"W	14403.78	337.459	0.47	-0.17	-0.44	
20824.00	89.080	340.120	6451.80	14460.58	13386.47	-5550.67	1671321.72	14372398.27	39°34'40.7397"N	80°53'25.1520"W	14491.63	337.479	1.22	-0.17	-1.20	
20912.00	89.570	341.800	6452.83	14548.57	13469.64	-5579.37	1671293.02	14372481.41	39°34'41.5621"N	80°53'25.5173"W	14579.46	337.500	1.99	0.56	1.91	
21001.00	89.380	341.280	6453.65	14637.57	13554.06	-5607.55	1671264.85	14372565.79	39°34'42.3968"N	80°53'25.8758"W	14668.24	337.524	0.62	-0.21	-0.58	
21089.00	89.320	341.670	6454.65	14725.56	13637.50	-5635.51	1671236.91	14372649.19	39°34'43.2217"N	80°53'26.2316"W	14756.02	337.548	0.45	-0.07	0.44	
21178.00	89.630	341.660	6455.46	14814.56	13721.97	-5663.50	1671208.92	14372733.64	39°34'44.0570"N	80°53'26.5878"W	14844.79	337.572	0.35	0.35	-0.01	
21266.00	89.780	341.890	6455.92	14902.55	13805.56	-5691.03	1671181.41	14372817.19	39°34'44.8834"N	80°53'26.9380"W	14932.56	337.597	0.31	0.17	0.26	
21354.00	89.260	341.080	6456.65	14990.55	13889.00	-5718.97	1671153.48	14372900.60	39°34'45.7084"N	80°53'27.2936"W	15020.35	337.620	1.09	-0.59	-0.92	
21443.00	89.200	340.940	6457.85	15079.54	13973.15	-5747.93	1671124.53	14372984.71	39°34'46.5404"N	80°53'27.6621"W	15109.19	337.640	0.17	-0.07	-0.16	
21531.00	89.010	340.820	6459.22	15167.52	14056.28	-5776.75	1671095.73	14373067.81	39°34'47.3624"N	80°53'28.0289"W	15197.04	337.659	0.26	-0.22	-0.14	
21620.00	90.000	341.780	6459.99	15256.52	14140.58	-5805.28	1671067.20	14373152.08	39°34'48.1958"N	80°53'28.3920"W	15285.85	337.680	1.55	1.11	1.08	
21708.00	89.450	341.480	6460.42	15344.52	14224.09	-5833.01	1671039.48	14373235.56	39°34'49.0216"N	80°53'28.7449"W	15373.64	337.702	0.71	-0.63	-0.34	
21796.00	89.480	341.840	6461.24	15432.51	14307.62	-5860.70	1671011.81	14373319.05	39°34'49.8474"N	80°53'29.0972"W	15461.43	337.725	0.41	0.03	0.41	
21885.00	89.260	340.640	6462.22	15521.50	14391.89	-5889.32	1670983.20	14373403.28	39°34'50.6806"N	80°53'29.4615"W	15550.26	337.745	1.37	-0.25	-1.35	
21973.00	89.110	340.730	6463.47	15609.49	14474.92	-5918.43	1670954.10	14373486.29	39°34'51.5016"N	80°53'29.8319"W	15638.13	337.762	0.20	-0.17	0.10	
22062.00	89.690	342.220	6464.40	15698.48	14559.31	-5946.70	1670925.84	14373570.63	39°34'52.3359"N	80°53'30.1917"W	15726.94	337.783	1.80	0.65	1.67	
22150.00	89.020	339.340	6465.39	15786.46	14642.39	-5975.66	1670896.89	14373653.88	39°34'53.1573"N	80°53'30.5603"W	15814.80	337.799	3.36	-0.76	-3.27	
22177.00	88.950	340.130	6465.87	15813.45	14667.71	-5985.02	1670887.54	14373679.00	39°34'53.4077"N	80°53'30.6794"W	15841.78	337.803	2.94	-0.26	2.93	
22201.00	88.950	340.130	6466.31	15837.44	14690.28	-5993.17	1670879.39	14373701.55	39°34'53.6309"N	80°53'30.7832"W	15865.76	337.806	0.00	0.00	0.00	Projected MD at TD: 22201'



Actual Wellpath Report

Tygart Unit 2H AWP Proj: 22201'
Page 11 of 13



REFERENCE WELLPATH IDENTIFICATION			
Operator	ANTERO RESOURCES CORPORATION	Well	Tygart Unit 2H
Field	Tyler	API	47-095-02722-0000
Facility	Elk Fork Pad	Wellbore	Tygart Unit 2H AWB
Slot	Slot #02		

HOLE & CASING SECTIONS - Ref Wellbore: Tygart Unit 2H AWB Ref Wellpath: Tygart Unit 2H AWP Proj: 22201'										
String/Diameter	Start MD [ft]	End MD [ft]	Interval [ft]	Start TVD [ft]	End TVD [ft]	Start N/S [ft]	Start E/W [ft]	End N/S [ft]	End E/W [ft]	
20in Conductor	25.50	105.50	80.00	25.50	105.50	0.00	0.00	-0.34	-0.06	
17.5in Open Hole	105.50	422.00	316.50	105.50	422.00	-0.34	-0.06	-1.40	-0.04	
13.375in Casing Surface	25.50	402.30	376.80	25.50	402.30	0.00	0.00	-1.42	-0.07	
12.25in Open Hole	422.00	2616.00	2194.00	422.00	2614.00	-1.40	-0.04	-50.31	-10.15	
9.625in Casing Intermediate	25.50	2596.50	2571.00	25.50	2594.50	0.00	0.00	-50.44	-10.20	
8.75in Open Hole	2616.00	5896.00	3280.00	2614.00	5812.97	-50.31	-10.15	-242.70	-663.57	
8.5in Open Hole	5896.00	22201.00	16305.00	5812.97	6466.31	-242.70	-663.57	14690.28	-5993.17	
5.5in Casing Production	25.50	22201.00	22175.50	25.50	6466.31	0.00	0.00	14690.28	-5993.17	



Actual Wellpath Report

Tygart Unit 2H AWP Proj: 22201'
Page 12 of 13



REFERENCE WELLPATH IDENTIFICATION			
Operator	ANTERO RESOURCES CORPORATION	Well	Tygart Unit 2H
Field	Tyler	API	47-095-02722-0000
Facility	Elk Fork Pad	Wellbore	Tygart Unit 2H AWB
Slot	Slot #02		

TARGETS								
Name	TVD [ft]	North [ft]	East [ft]	Grid East [US ft]	Grid North [US ft]	Latitude	Longitude	Shape
Tygart Unit 2H POE Rev-2	6488.00	109.99	-977.42	1675893.13	14359127.11	39°32'29.4658"N	80°52'26.9842"W	point
Tygart Unit 2H AZI Rev-2	6523.00	640.16	-1210.44	1675660.20	14359657.06	39°32'34.7088"N	80°52'29.9491"W	point
Tygart Unit 2H BHL Rev-3	6523.00	14684.49	-5984.34	1670888.22	14373695.77	39°34'53.5736"N	80°53'30.6704"W	point
Tygart Unit 2H LP Rev-3	6523.00	308.86	-1074.17	1675796.42	14359325.90	39°32'31.4326"N	80°52'28.2156"W	point
Tygart Unit 2H 50' L/R Hard Line Rev-2	7000.00	7662.33	-3597.39	1673274.21	14366676.42	39°33'44.1424"N	80°53'0.3014"W	rectangle
2D Rectangle 14833.5 x 100.								

WELLPATH COMPOSITION - Ref Wellbore: Tygart Unit 2H AWB Ref Wellpath: Tygart Unit 2H AWP Proj: 22201'						
Start MD [ft]	End MD [ft]	Positional Uncertainty Model	Log Name/Comment	Wellbore	Survey Date	
25.50	386.00	Gyrodata 2015 - GC+WIR+DPIPE	01 Gyrodata MS Gyro <17-1/2"> (50'-386')	Tygart Unit 2H AWB	14/Jan/2021	
386.00	2539.00	BH NaviTrak (2019) (Axial Corr+HRGM)	02 APS EM <12-1/4"> (386')(419'-2539')	Tygart Unit 2H AWB	14/Jan/2021	
2539.00	5829.00	BH NaviTrak (2019) (Axial Corr+HRGM)	03 APS EM <8-3/4"> (2539')(2639'-5829')	Tygart Unit 2H AWB	26/Jan/2021	
5829.00	22201.00	BH AutoTrak Curve/eXpress (2019) (HRGM, Short spacing)	04 BH AT Curve <8-1/2"> (5829')(5874'-22177')	Tygart Unit 2H AWB	26/Jan/2021	



Actual Wellpath Report
Tygart Unit 2H AWP Proj: 22201'
Page 13 of 13



REFERENCE WELLPATH IDENTIFICATION			
Operator	ANTERO RESOURCES CORPORATION	Well	Tygart Unit 2H
Field	Tyler	API	47-095-02722-0000
Facility	Elk Fork Pad	Wellbore	Tygart Unit 2H AWB
Slot	Slot #02		

COMMENTS
<p>Wellpath general comments API: 47-095-02722-0000 BH Job #: 110728658-B Rig: H&P 317 Duration: 1/28/2021-2/3/2021 Gyrodata MS Gyro <17-1/2"> (50'-386') APS EM <12-1/4"> (386')(419'-2539') APS EM <8-3/4"> (2539')(2639'-5829') BH AT Curve <8-1/2"> (5829')(5874'-22177') Sycamore: 6364' MD Middlesex: 6506' MD Burkett: 6652' MD Tully: 6689' MD Marcellus POE: 6810' MD Projected MD at TD: 22201'</p>