



ANTERO RESOURCES CORPORATION

Location: Tyler County, WV
 Field: Tyler
 Facility: Blizzard Pad

Slot: Slot #01
 Well: Wade Unit 1H
 Wellbore: Wade Unit 1H PWB

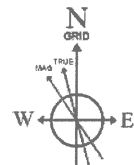
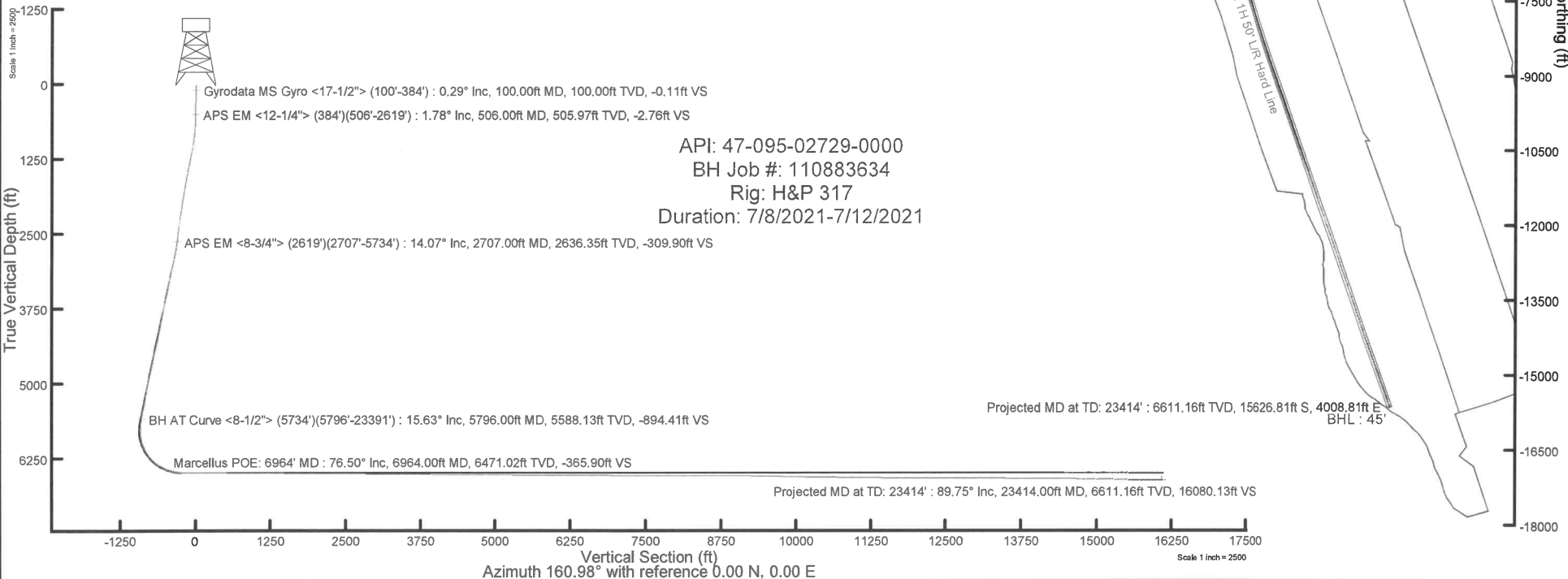


Plot reference wellpath is Wade Unit 1H PWP Rev-B.0	Grid System: NAD27 / UTM Zone 17 North, US feet
True vertical depths are referenced to H&P 317 (RKB)	North Reference: Grid north
Reference wellpath measured depths are referenced to H&P 317 (RKB)	Scale: True distance
H&P 317 (RKB) to Mean Sea Level: 1029.5 feet	Coordinates are in feet referenced to Slot
Mean Sea Level to Ground level (At Slot: Slot #01): -1004 feet	Depths are in feet
Offset wellpath MDs are referenced to each path's default MD datum	Created by: edswayan on 2021-07-13; Database: WA_MPL_EASTERNUS_Defn

Location Information				
Facility Name	Grid East (US ft)	Grid North (US ft)	Latitude	Longitude
Blizzard Pad	1682398.190	14343430.420	39°29'54.1703"N	80°51'4.2494"W
Slot	Local N (ft)	Local E (ft)	Grid East (US ft)	Grid North (US ft)
Slot #01	0.00	0.00	1682398.190	14343430.420
			Latitude	Longitude
			39°29'54.1703"N	80°51'4.2494"W
Comment: Wade Unit 1H				
H&P 317 (RKB) to Ground level (At Slot: Slot #01)				25.5ft
Mean Sea Level to Ground level (At Slot: Slot #01)				-1004ft
H&P 317 (RKB) to Mean Sea Level				1029.5ft

Well Profile Data								
Design Comment	MD (ft)	Inc (")	Az (°)	TVD (ft)	Local N (ft)	Local E (ft)	DLS (*/100ft)	VS (ft)
Tie On	2619.00	15.010	278.100	2551.17	151.96	-478.59	1.69	-299.64
Proj. to Bottom	2694.00	15.010	278.100	2623.61	154.70	-497.82	0.00	-308.49
Drill Out Csg	2774.00	15.010	278.100	2700.88	157.62	-518.34	0.00	-317.94
End of 3D Arc	2929.64	17.489	292.313	2850.35	169.34	-559.95	3.00	-342.58
Curve KOP	5855.65	17.489	292.313	5650.64	504.34	-1376.24	0.00	-925.32
POE	6948.92	74.817	160.976	6472.00	-35.01	-1351.54	8.00	-407.37
Landing Pt.	7138.71	90.000	160.976	6497.00	-212.34	-1290.40	8.00	-219.79
BHL	23457.15	90.000	160.976	6497.00	-15639.51	4028.81	0.00	16098.65

Well Data			
Slot	Well	Wellbore	Wellpath
Slot #01	Wade Unit 1H	Wade Unit 1H AWB	Wade Unit 1H AWP Proj: 23414'
Slot #01	Wade Unit 1H	Wade Unit 1H PWB	Wade Unit 1H PWP Rev-B.0



User specified (HDGM) Dip: 66.44° Field: 51729 nT
 Magnetic North is 7.35 degrees West of True North (at 06/Jul/2021)
 Grid North is 0.09 degrees East of True North
 To correct azimuth from True to Grid subtract 0.09 degrees
 To correct azimuth from Magnetic to Grid subtract 7.44 degrees



Actual Wellpath Report

Wade Unit 1H AWP Proj: 23414'

Page 1 of 12



REFERENCE WELLPATH IDENTIFICATION			
Operator	ANTERO RESOURCES CORPORATION	Well	Wade Unit 1H
Field	Tyler	API	47-095-02729-0000
Facility	Blizzard Pad	Wellbore	Wade Unit 1H AWB
Slot	Slot #01		

REPORT SETUP INFORMATION			
Projection System	NAD27 / UTM Zone 17 North, US feet	Software System	WellArchitect® 6.0
North Reference	Grid	User	Edsaryar
Scale	0.999602	Report Generated	13/Jul/2021 at 15:03
Convergence at slot	0.09° East	Database	WA_MPL_EASTERNUS_Defn

WELLPATH LOCATION						
	Local coordinates		Grid coordinates		Geographic coordinates	
	North[ft]	East[ft]	Easting[US ft]	Northing[US ft]	Latitude	Longitude
Slot Location	0.00	0.00	1682398.19	14343430.42	39°29'54.1703"N	80°51'4.2494"W
Facility Reference Pt			1682398.19	14343430.42	39°29'54.1703"N	80°51'4.2494"W
Field Reference Pt			0.00	0.00	0°00'0.0000"	85°29'19.3013"W

WELLPATH DATUM			
Calculation method	Minimum curvature	H&P 317 (RKB) to Facility Vertical Datum	1029.50ft
Horizontal Reference Pt	Slot	H&P 317 (RKB) to Mean Sea Level	1029.50ft
Vertical Reference Pt	H&P 317 (RKB)	H&P 317 (RKB) to Ground Level at Slot (Slot #01)	25.50ft
MD Reference Pt	H&P 317 (RKB)	Section Origin	N 0.00, E 0.00 ft
Field Vertical Reference	Mean Sea Level	Section Azimuth	160.98°



Actual Wellpath Report

Wade Unit 1H AWP Proj: 23414'
Page 2 of 12



REFERENCE WELLPATH IDENTIFICATION			
Operator	ANTERO RESOURCES CORPORATION	Well	Wade Unit 1H
Field	Tyler	API	47-095-02729-0000
Facility	Blizzard Pad	Wellbore	Wade Unit 1H AWB
Slot	Slot #01		

WELLPATH DATA (254 stations) † = interpolated, ‡ = extrapolated station																
MD	Inclination	Azimuth	TVD	Vert Sect	North	East	Grid East	Grid North	Latitude	Longitude	Closure Dist	Closure Dir	DLS	Build Rate	Turn Rate	Comments
(ft)	(°)	(°)	(ft)	(ft)	(ft)	(ft)	(US ft)	(US ft)			(ft)	(°)	(°/100ft)	(°/100ft)	(°/100ft)	
0.00	0.00	287.780	0.00	0.00	0.00	0.00	1682398.19	14343430.42	39°29'54.1703"N	80°51'4.2494"W	0.00	0.000	0.00	0.00	0.00	
25.50	0.000	287.780	25.50	0.00	0.00	0.00	1682398.19	14343430.42	39°29'54.1703"N	80°51'4.2494"W	0.00	0.000	0.00	0.00	0.00	
100.00	0.290	287.780	100.00	-0.11	0.06	-0.18	1682398.01	14343430.48	39°29'54.1709"N	80°51'4.2517"W	0.19	287.780	0.39	0.39	0.00	Gyrodata MS Gyro <17-1/2"> (100'-384')
200.00	0.320	284.980	200.00	-0.42	0.21	-0.69	1682397.50	14343430.63	39°29'54.1723"N	80°51'4.2583"W	0.72	286.695	0.03	0.03	-2.80	
300.00	0.460	300.280	300.00	-0.88	0.48	-1.31	1682396.88	14343430.90	39°29'54.1751"N	80°51'4.2661"W	1.39	290.233	0.17	0.14	15.30	
384.00	0.490	286.820	383.99	-1.35	0.76	-1.94	1682396.25	14343431.18	39°29'54.1778"N	80°51'4.2742"W	2.08	291.263	0.14	0.04	-16.02	
506.00	1.780	286.580	505.97	-2.76	1.45	-4.26	1682393.93	14343431.87	39°29'54.1847"N	80°51'4.3037"W	4.50	288.776	1.06	1.06	-0.20	APS EM <12-1/4"> (384')(506'-2619')
595.00	2.390	284.990	594.91	-4.60	2.32	-7.37	1682390.82	14343432.74	39°29'54.1934"N	80°51'4.3435"W	7.73	287.475	0.69	0.69	-1.79	
686.00	3.830	292.800	685.77	-7.69	3.99	-12.01	1682386.19	14343434.41	39°29'54.2099"N	80°51'4.4026"W	12.65	288.380	1.65	1.58	8.58	
777.00	6.260	293.140	776.41	-13.04	7.12	-19.37	1682378.82	14343437.54	39°29'54.2410"N	80°51'4.4964"W	20.64	290.173	2.67	2.67	0.37	
868.00	8.840	297.960	866.62	-21.49	12.35	-30.11	1682368.09	14343442.76	39°29'54.2928"N	80°51'4.6333"W	32.55	292.294	2.92	2.84	5.30	
958.00	10.610	300.740	955.32	-32.87	19.83	-43.35	1682354.86	14343450.24	39°29'54.3669"N	80°51'4.8020"W	47.66	294.578	2.03	1.97	3.09	
1048.00	12.580	302.930	1043.48	-46.91	29.39	-58.69	1682339.52	14343459.80	39°29'54.4617"N	80°51'4.9976"W	65.64	296.598	2.24	2.19	2.43	
1142.00	14.490	303.450	1134.86	-64.30	41.44	-77.10	1682321.12	14343471.84	39°29'54.5811"N	80°51'5.2321"W	87.53	298.256	2.04	2.03	0.55	
1237.00	16.070	296.850	1226.51	-83.17	53.93	-98.75	1682299.48	14343484.33	39°29'54.7049"N	80°51'5.5080"W	112.52	298.639	2.47	1.66	-6.95	
1332.00	16.170	295.220	1317.78	-101.83	65.50	-122.45	1682275.79	14343495.90	39°29'54.8197"N	80°51'5.8101"W	138.87	298.144	0.49	0.11	-1.72	
1427.00	17.130	288.980	1408.80	-119.68	75.69	-147.65	1682250.60	14343506.08	39°29'54.9208"N	80°51'6.1313"W	165.92	297.142	2.13	1.01	-6.57	
1522.00	17.650	287.210	1499.46	-136.80	84.50	-174.64	1682223.62	14343514.89	39°29'55.0083"N	80°51'6.4754"W	194.01	295.821	0.78	0.55	-1.86	
1617.00	17.550	285.440	1590.01	-153.42	92.58	-202.20	1682196.07	14343522.96	39°29'55.0886"N	80°51'6.8269"W	222.39	294.601	0.57	-0.11	-1.86	
1712.00	17.570	284.340	1680.58	-169.41	99.94	-229.90	1682168.38	14343530.32	39°29'55.1618"N	80°51'7.1800"W	250.68	293.496	0.35	0.02	-1.16	
1807.00	17.230	283.270	1771.24	-184.81	106.72	-257.49	1682140.81	14343537.10	39°29'55.2293"N	80°51'7.5318"W	278.73	292.513	0.49	-0.36	-1.13	
1901.00	16.860	283.400	1861.11	-199.56	113.08	-284.30	1682114.01	14343543.45	39°29'55.2925"N	80°51'7.8737"W	305.96	291.690	0.40	-0.39	0.14	
1996.00	16.730	283.950	1952.06	-214.38	119.57	-310.97	1682087.35	14343549.94	39°29'55.3571"N	80°51'8.2138"W	333.16	291.032	0.22	-0.14	0.58	
2091.00	16.630	280.300	2043.06	-228.48	125.29	-337.61	1682060.71	14343555.66	39°29'55.4141"N	80°51'8.5536"W	360.11	290.361	1.11	-0.11	-3.84	
2186.00	16.030	281.430	2134.23	-241.79	130.32	-363.85	1682034.49	14343560.69	39°29'55.4642"N	80°51'8.8881"W	386.48	289.707	0.71	-0.63	1.19	
2280.00	15.640	277.670	2224.66	-254.06	134.59	-389.13	1682009.22	14343564.95	39°29'55.5068"N	80°51'9.2105"W	411.74	289.079	1.17	-0.41	-4.00	
2375.00	15.710	283.080	2316.14	-266.64	139.21	-414.35	1681984.01	14343569.57	39°29'55.5529"N	80°51'9.5321"W	437.11	288.571	1.54	0.07	5.69	
2470.00	15.880	281.030	2407.55	-279.99	144.61	-439.63	1681958.74	14343574.97	39°29'55.6066"N	80°51'9.8545"W	462.80	288.207	0.61	0.18	-2.16	
2565.00	15.310	281.390	2499.05	-292.84	149.57	-464.68	1681933.69	14343579.93	39°29'55.6561"N	80°51'10.1740"W	488.16	287.842	0.61	-0.60	0.38	
2619.00	15.010	278.100	2551.17	-299.64	151.96	-478.59	1681919.79	14343582.32	39°29'55.6799"N	80°51'10.3514"W	502.14	287.616	1.69	-0.56	-6.09	



Actual Wellpath Report

Wade Unit 1H AWP Proj: 23414'
Page 3 of 12



REFERENCE WELLPATH IDENTIFICATION			
Operator	ANTERO RESOURCES CORPORATION	Well	Wade Unit 1H
Field	Tyler	API	47-095-02729-0000
Facility	Blizzard Pad	Wellbore	Wade Unit 1H AWB
Slot	Slot #01		

WELLPATH DATA (254 stations)																
MD	Inclination	Azimuth	TVD	Vert Sect	North	East	Grid East	Grid North	Latitude	Longitude	Closure Dist	Closure Dir	DLS	Build Rate	Turn Rate	Comments
[ft]	[°]	[°]	[ft]	[ft]	[ft]	[ft]	[US ft]	[US ft]			[ft]	[°]	[°/100ft]	[°/100ft]	[°/100ft]	
2707.00	14.070	279.250	2636.35	-309.90	155.29	-500.43	1681897.96	14343585.65	39°29'55.7132"N	80°51'10.6300"W	523.97	287.239	1.12	-1.07	1.31	APS EM <8-3/4"> (2619)(2707-5734)
2801.00	14.990	283.960	2727.35	-321.93	160.06	-523.51	1681874.89	14343590.41	39°29'55.7607"N	80°51'10.9242"W	547.43	287.000	1.59	0.98	5.01	
2896.00	17.470	288.680	2818.56	-337.34	167.59	-548.95	1681849.46	14343597.94	39°29'55.8355"N	80°51'11.2486"W	573.96	286.977	2.95	2.61	4.97	
2991.00	18.620	288.760	2908.89	-355.35	177.03	-576.82	1681821.60	14343607.38	39°29'55.9293"N	80°51'11.6039"W	603.37	287.062	1.21	1.21	0.08	
3085.00	18.990	289.120	2997.87	-373.99	186.87	-605.48	1681792.95	14343617.22	39°29'56.0270"N	80°51'11.9693"W	633.66	287.152	0.41	0.39	0.38	
3180.00	18.220	287.530	3087.90	-392.38	196.41	-634.24	1681764.20	14343626.75	39°29'56.1217"N	80°51'12.3361"W	663.96	287.206	0.97	-0.81	-1.67	
3275.00	17.240	289.440	3178.39	-409.98	205.57	-661.68	1681736.77	14343635.90	39°29'56.2127"N	80°51'12.6859"W	692.88	287.259	1.20	-1.03	2.01	
3369.00	15.370	292.280	3268.61	-426.87	214.93	-686.35	1681712.12	14343645.26	39°29'56.3056"N	80°51'13.0003"W	719.21	287.388	2.16	-1.99	3.02	
3464.00	14.210	295.620	3360.46	-443.37	224.74	-708.51	1681689.96	14343655.07	39°29'56.4030"N	80°51'13.2829"W	743.30	287.599	1.51	-1.22	3.52	
3558.00	14.920	299.580	3451.44	-460.56	235.70	-729.44	1681669.04	14343666.03	39°29'56.5116"N	80°51'13.5496"W	766.58	287.907	1.30	0.76	4.21	
3653.00	17.400	300.360	3542.68	-480.52	248.92	-752.34	1681646.15	14343679.24	39°29'56.6426"N	80°51'13.8414"W	792.45	288.308	2.62	2.61	0.82	
3747.00	18.990	297.280	3631.98	-502.24	263.04	-778.06	1681620.44	14343693.35	39°29'56.7826"N	80°51'14.1693"W	821.32	288.679	1.98	1.69	-3.28	
3842.00	17.940	288.910	3722.10	-522.42	274.87	-805.64	1681592.87	14343705.18	39°29'56.8999"N	80°51'14.5209"W	851.24	288.838	3.00	-1.11	-8.81	
3937.00	16.520	285.260	3812.84	-539.02	283.16	-832.52	1681566.01	14343713.47	39°29'56.9823"N	80°51'14.8636"W	879.36	288.785	1.88	-1.49	-3.84	
4032.00	17.230	286.570	3903.75	-554.82	290.73	-859.03	1681539.50	14343721.03	39°29'57.0576"N	80°51'15.2017"W	906.90	288.698	0.85	0.75	1.38	
4125.00	17.420	289.420	3992.53	-571.49	299.29	-885.36	1681513.18	14343729.59	39°29'57.1426"N	80°51'15.5374"W	934.58	288.677	0.94	0.20	3.06	
4220.00	17.150	289.720	4083.24	-589.09	308.74	-911.96	1681486.59	14343739.04	39°29'57.2364"N	80°51'15.8765"W	962.81	288.703	0.30	-0.28	0.32	
4314.00	15.900	291.530	4173.36	-606.14	318.14	-936.99	1681461.58	14343748.44	39°29'57.3297"N	80°51'16.1955"W	989.52	288.754	1.44	-1.33	1.93	
4408.00	16.470	294.800	4263.63	-623.73	328.46	-961.06	1681437.51	14343758.75	39°29'57.4321"N	80°51'16.5024"W	1015.64	288.869	1.14	0.61	3.48	
4502.00	16.740	296.440	4353.71	-642.61	340.08	-985.28	1681413.31	14343770.36	39°29'57.5473"N	80°51'16.8111"W	1042.32	289.042	0.58	0.29	1.74	
4596.00	17.120	296.450	4443.64	-662.12	352.27	-1009.79	1681388.81	14343782.55	39°29'57.6681"N	80°51'17.1235"W	1069.47	289.231	0.40	0.40	0.01	
4695.00	17.660	295.970	4538.11	-683.13	365.33	-1036.33	1681362.27	14343795.61	39°29'57.7977"N	80°51'17.4619"W	1098.84	289.419	0.56	0.55	-0.48	
4790.00	17.820	294.920	4628.60	-703.40	377.77	-1062.47	1681336.14	14343808.04	39°29'57.9210"N	80°51'17.7950"W	1127.63	289.573	0.38	0.17	-1.11	
4884.00	18.030	294.930	4718.04	-723.48	389.96	-1088.71	1681309.92	14343820.22	39°29'58.0419"N	80°51'18.1295"W	1156.44	289.707	0.22	0.22	0.01	
4979.00	17.730	294.800	4808.45	-743.70	402.22	-1115.17	1681283.46	14343832.48	39°29'58.1636"N	80°51'18.4668"W	1185.49	289.834	0.32	-0.32	-0.14	
5073.00	17.700	291.040	4897.99	-762.80	413.36	-1141.50	1681257.14	14343843.61	39°29'58.2740"N	80°51'18.8025"W	1214.04	289.906	1.22	-0.03	-4.00	
5168.00	17.200	291.050	4988.62	-781.14	423.59	-1168.09	1681230.57	14343853.84	39°29'58.3756"N	80°51'19.1414"W	1242.52	289.932	0.53	-0.53	0.01	
5262.00	18.040	293.100	5078.21	-799.85	434.29	-1194.45	1681204.22	14343864.54	39°29'58.4818"N	80°51'19.4775"W	1270.95	289.981	1.11	0.89	2.18	
5357.00	17.370	285.940	5168.72	-817.84	443.96	-1221.62	1681177.06	14343874.20	39°29'58.5777"N	80°51'19.8239"W	1299.79	289.972	2.40	-0.71	-7.54	
5451.00	17.050	284.500	5258.51	-833.49	451.26	-1248.45	1681150.24	14343881.50	39°29'58.6504"N	80°51'20.1660"W	1327.51	289.873	0.57	-0.34	-1.53	



Actual Wellpath Report

Wade Unit 1H AWP Proj: 23414'
Page 4 of 12



REFERENCE WELLPATH IDENTIFICATION			
Operator	ANTERO RESOURCES CORPORATION	Well	Wade Unit 1H
Field	Tyler	API	47-095-02729-0000
Facility	Blizzard Pad	Wellbore	Wade Unit 1H AWB
Slot	Slot #01		

WELLPATH DATA (254 stations) † = interpolated, ‡ = extrapolated station																
MD	Inclination	Azimuth	TVD	Vert Sect	North	East	Grid East	Grid North	Latitude	Longitude	Closure Dist	Closure Dir	DLS	Build Rate	Turn Rate	Comments
[ft]	[°]	[°]	[ft]	[ft]	[ft]	[ft]	[US ft]	[US ft]			[ft]	[°]	[°/100ft]	[°/100ft]	[°/100ft]	
5545.00	17.420	287.140	5348.29	-849.41	458.86	-1275.24	1681123.46	14343889.10	39°29'58.7259"N	80°51'20.5076"W	1355.28	289.790	0.92	0.39	2.81	
5640.00	17.550	289.460	5438.90	-866.71	467.82	-1302.33	1681096.38	14343898.06	39°29'58.8149"N	80°51'20.8530"W	1383.81	289.759	0.75	0.14	2.44	
5734.00	17.100	288.500	5528.64	-883.95	476.93	-1328.80	1681069.92	14343907.16	39°29'58.9053"N	80°51'21.1905"W	1411.80	289.744	0.57	-0.48	-1.02	
5796.00	15.630	286.980	5588.13	-894.41	482.26	-1345.44	1681053.29	14343912.49	39°29'58.9583"N	80°51'21.4026"W	1429.26	289.720	2.47	-2.37	-2.45	BH AT Curve <8-1/2"> (5734')(5796'-23391')
5891.00	16.370	285.210	5679.45	-909.46	489.51	-1370.60	1681028.14	14343919.73	39°29'59.0303"N	80°51'21.7234"W	1455.39	289.654	0.93	0.78	-1.86	
5986.00	13.520	254.590	5771.36	-917.70	490.07	-1394.26	1681004.49	14343920.30	39°29'59.0362"N	80°51'22.0253"W	1477.88	289.366	8.72	-3.00	-32.23	
6080.00	14.320	224.040	5862.73	-913.12	478.78	-1412.96	1680985.80	14343909.01	39°29'58.9249"N	80°51'22.2640"W	1491.87	288.719	7.77	0.85	-32.50	
6175.00	18.300	202.480	5953.97	-896.61	456.53	-1426.85	1680971.91	14343886.76	39°29'58.7052"N	80°51'22.4416"W	1498.10	287.742	7.56	4.19	-22.69	
6269.00	23.640	190.370	6041.75	-869.10	424.31	-1435.89	1680962.87	14343854.56	39°29'58.3870"N	80°51'22.5577"W	1497.27	286.463	7.29	5.68	-12.88	
6364.00	30.520	182.380	6126.31	-829.99	381.41	-1440.33	1680958.44	14343811.68	39°29'57.9630"N	80°51'22.6152"W	1489.97	284.832	8.18	7.24	-8.41	
6442.00†	36.387	179.007	6191.37	-789.51	338.45	-1440.75	1680958.01	14343768.73	39°29'57.5384"N	80°51'22.6214"W	1479.97	283.220	7.89	7.52	-4.32	Sycamore: 6442' MD
6458.00	37.600	178.430	6204.15	-780.34	328.82	-1440.54	1680958.23	14343759.11	39°29'57.4433"N	80°51'22.6189"W	1477.59	282.858	7.89	7.58	-3.60	
6552.00	45.370	175.480	6274.52	-720.50	266.71	-1437.11	1680961.66	14343697.02	39°29'56.8293"N	80°51'22.5764"W	1461.65	280.514	8.52	8.27	-3.14	
6594.00†	49.187	173.585	6303.01	-690.51	236.01	-1434.15	1680964.61	14343666.33	39°29'56.5258"N	80°51'22.5393"W	1453.44	279.345	9.67	9.09	-4.51	Middlesex: 6594' MD
6646.00	53.950	171.520	6335.32	-650.61	195.63	-1428.85	1680969.91	14343625.97	39°29'56.1267"N	80°51'22.4725"W	1442.18	277.796	9.67	9.16	-3.97	
6741.00	59.950	163.450	6387.17	-571.62	118.08	-1411.44	1680987.31	14343548.45	39°29'55.3599"N	80°51'22.2520"W	1416.37	274.782	9.51	6.32	-8.49	
6758.00†	61.022	162.904	6395.55	-556.83	103.92	-1407.16	1680991.59	14343534.29	39°29'55.2199"N	80°51'22.1977"W	1410.99	274.224	6.90	6.30	-3.21	Burkett: 6758' MD
6811.00†	64.375	161.269	6419.85	-509.75	59.11	-1392.67	1681006.08	14343489.51	39°29'54.7769"N	80°51'22.0137"W	1393.92	272.431	6.90	6.33	-3.08	Tully: 6811' MD
6835.00	65.900	160.560	6429.94	-487.98	38.54	-1385.55	1681013.20	14343468.94	39°29'54.5734"N	80°51'21.9233"W	1386.08	271.593	6.90	6.35	-2.96	
6930.00	74.110	160.600	6462.40	-398.78	-45.59	-1355.89	1681042.84	14343384.85	39°29'53.7415"N	80°51'21.5467"W	1356.66	268.074	8.64	8.64	0.04	
6964.00†	76.504	160.519	6471.02	-365.90	-76.60	-1344.94	1681053.78	14343353.85	39°29'53.4349"N	80°51'21.4077"W	1347.12	266.740	7.05	7.04	-0.24	Marcellus POE: 6964' MD
7024.00	80.730	160.380	6482.86	-307.10	-132.01	-1325.26	1681073.46	14343298.46	39°29'52.8869"N	80°51'21.1578"W	1331.82	264.311	7.05	7.04	-0.23	
7118.00	87.570	160.550	6492.44	-213.64	-220.09	-1294.02	1681104.69	14343210.42	39°29'52.0159"N	80°51'20.7610"W	1312.60	260.347	7.28	7.28	0.18	
7213.00	89.660	159.250	6494.73	-118.70	-309.27	-1261.38	1681137.31	14343121.27	39°29'51.1340"N	80°51'20.3465"W	1298.74	256.224	2.59	2.20	-1.37	
7308.00	89.260	160.370	6495.63	-23.72	-398.43	-1228.59	1681170.09	14343032.15	39°29'50.2523"N	80°51'19.9301"W	1291.58	252.032	1.25	-0.42	1.18	
7401.00	89.320	159.320	6496.78	69.25	-485.72	-1196.55	1681202.12	14342944.89	39°29'49.3890"N	80°51'19.5231"W	1291.38	247.906	1.13	0.06	-1.13	
7496.00	89.570	159.390	6497.70	164.21	-574.62	-1163.06	1681235.60	14342856.03	39°29'48.5099"N	80°51'19.0977"W	1297.26	243.708	0.27	0.26	0.07	
7590.00	90.860	159.980	6497.35	258.18	-662.77	-1130.43	1681268.22	14342767.92	39°29'47.6381"N	80°51'18.6832"W	1310.39	239.617	1.51	1.37	0.63	
7684.00	89.140	160.510	6497.35	352.17	-751.23	-1098.66	1681299.97	14342679.49	39°29'46.7633"N	80°51'18.2798"W	1330.94	235.637	1.91	-1.83	0.56	
7778.00	89.350	159.680	6498.59	446.15	-839.61	-1066.65	1681331.96	14342591.15	39°29'45.8893"N	80°51'17.8734"W	1357.46	231.792	0.91	0.22	-0.88	



Actual Wellpath Report

Wade Unit 1H AWP Proj: 23414'

Page 5 of 12



REFERENCE WELLPATH IDENTIFICATION				
Operator	ANTERO RESOURCES CORPORATION		Well	Wade Unit 1H
Field	Tyler		API	47-095-02729-0000
Facility	Blizzard Pad		Wellbore	Wade Unit 1H AWB
Slot	Slot #01			

WELLPATH DATA (254 stations)																
MD [ft]	Inclination [°]	Azimuth [°]	TVD [ft]	Vert Sect [ft]	North [ft]	East [ft]	Grid East [US ft]	Grid North [US ft]	Latitude	Longitude	Closure Dist [ft]	Closure Dir [°]	DLS [°/100ft]	Build Rate [°/100ft]	Turn Rate [°/100ft]	Comments
7873.00	89.380	161.050	6499.64	541.14	-929.08	-1034.73	1681363.87	14342501.71	39°29'45.0046"N	80°51'17.4681"W	1390.63	228.080	1.44	0.03	1.44	
7968.00	88.800	159.720	6501.15	636.12	-1018.55	-1002.85	1681395.74	14342412.28	39°29'44.1198"N	80°51'17.0632"W	1429.39	224.555	1.53	-0.61	-1.40	
8062.00	89.010	160.120	6502.95	730.08	-1106.82	-970.58	1681428.00	14342324.04	39°29'43.2469"N	80°51'16.6534"W	1472.10	221.248	0.48	0.22	0.43	
8157.00	90.250	159.330	6503.56	825.06	-1195.93	-937.66	1681460.90	14342234.97	39°29'42.3656"N	80°51'16.2353"W	1519.69	218.098	1.55	1.31	-0.83	
8252.00	89.420	159.940	6503.83	920.03	-1284.99	-904.60	1681493.95	14342145.94	39°29'41.4849"N	80°51'15.8155"W	1571.47	215.145	1.08	-0.87	0.64	
8346.00	89.420	159.670	6504.78	1014.00	-1373.21	-872.15	1681526.38	14342057.76	39°29'40.6125"N	80°51'15.4034"W	1626.76	212.421	0.29	0.00	-0.29	
8440.00	89.510	160.810	6505.66	1107.99	-1461.67	-840.38	1681558.15	14341969.34	39°29'39.7377"N	80°51'14.9999"W	1686.03	209.897	1.22	0.10	1.21	
8535.00	89.910	161.360	6506.14	1202.99	-1551.53	-809.58	1681588.93	14341879.51	39°29'38.8490"N	80°51'14.6089"W	1750.05	207.555	0.72	0.42	0.58	
8630.00	89.570	161.180	6506.57	1297.98	-1641.50	-779.08	1681619.42	14341789.57	39°29'37.9593"N	80°51'14.2216"W	1817.00	205.390	0.40	-0.36	-0.19	
8724.00	89.570	160.120	6507.28	1391.98	-1730.19	-747.93	1681650.56	14341700.92	39°29'37.0823"N	80°51'13.8262"W	1884.93	203.378	1.13	0.00	-1.13	
8819.00	89.630	160.730	6507.94	1486.97	-1819.70	-716.10	1681682.37	14341611.45	39°29'36.1972"N	80°51'13.4221"W	1955.53	201.481	0.65	0.06	0.64	
8914.00	89.970	161.250	6508.27	1581.97	-1909.51	-685.16	1681713.30	14341521.67	39°29'35.3090"N	80°51'13.0292"W	2028.72	199.739	0.65	0.36	0.55	
9008.00	89.540	160.790	6508.68	1675.97	-1998.40	-654.59	1681743.86	14341432.82	39°29'34.4300"N	80°51'12.6411"W	2102.88	198.137	0.67	-0.46	-0.49	
9103.00	89.570	160.850	6509.41	1770.97	-2088.13	-623.38	1681775.06	14341343.13	39°29'33.5427"N	80°51'12.2449"W	2179.19	196.622	0.07	0.03	0.06	
9197.00	90.220	161.330	6509.59	1864.97	-2177.05	-592.92	1681805.51	14341254.24	39°29'32.6633"N	80°51'11.8582"W	2256.35	195.235	0.86	0.69	0.51	
9291.00	89.140	160.170	6510.11	1958.96	-2265.79	-561.93	1681836.49	14341165.53	39°29'31.7858"N	80°51'11.4647"W	2334.43	193.929	1.69	-1.15	-1.23	
9385.00	89.600	161.290	6511.14	2052.95	-2354.52	-530.91	1681867.50	14341076.84	39°29'30.9084"N	80°51'11.0709"W	2413.63	192.707	1.29	0.49	1.19	
9480.00	89.690	160.330	6511.73	2147.95	-2444.24	-499.68	1681898.71	14340987.16	39°29'30.0211"N	80°51'10.6745"W	2494.79	191.554	1.01	0.09	-1.01	
9574.00	89.170	159.520	6512.67	2241.93	-2532.52	-467.42	1681930.96	14340898.91	39°29'29.1481"N	80°51'10.2648"W	2575.29	190.457	1.02	-0.55	-0.86	
9668.00	89.880	160.780	6513.45	2335.91	-2620.93	-435.50	1681962.86	14340810.54	39°29'28.2738"N	80°51'9.8595"W	2656.87	189.434	1.54	0.76	1.34	
9762.00	89.820	160.860	6513.69	2429.91	-2709.71	-404.62	1681993.73	14340721.79	39°29'27.3958"N	80°51'9.4675"W	2739.75	188.493	0.11	-0.06	0.09	
9952.00	89.780	160.600	6514.36	2619.91	-2889.07	-341.91	1682056.41	14340542.51	39°29'25.6222"N	80°51'8.6714"W	2909.23	186.749	0.14	-0.02	-0.14	
10046.00	89.260	159.280	6515.14	2713.89	-2977.36	-309.67	1682088.64	14340454.25	39°29'24.7490"N	80°51'8.2621"W	2993.42	185.938	1.51	-0.55	-1.40	
10141.00	89.600	159.100	6516.09	2808.83	-3066.16	-275.93	1682122.37	14340365.49	39°29'23.8709"N	80°51'7.8335"W	3078.55	185.142	0.40	0.36	-0.19	
10236.00	89.480	159.230	6516.85	2903.78	-3154.94	-242.14	1682156.15	14340276.74	39°29'22.9928"N	80°51'7.4043"W	3164.22	184.389	0.19	-0.13	0.14	
10330.00	89.480	159.550	6517.71	2997.74	-3242.92	-209.05	1682189.22	14340188.80	39°29'22.1227"N	80°51'6.9842"W	3249.65	183.688	0.34	0.00	0.34	
10425.00	89.850	161.790	6518.26	3092.73	-3332.56	-177.61	1682220.65	14340099.20	39°29'21.2363"N	80°51'6.5850"W	3337.29	183.051	2.39	0.39	2.36	
10518.00	89.170	160.610	6519.06	3185.73	-3420.59	-147.64	1682250.61	14340011.20	39°29'20.3658"N	80°51'6.2046"W	3423.78	182.471	1.46	-0.73	-1.27	
10613.00	90.000	161.520	6519.74	3280.72	-3510.45	-116.81	1682281.42	14339921.38	39°29'19.4772"N	80°51'5.8133"W	3512.39	181.906	1.30	0.87	0.96	
10707.00	89.570	161.050	6520.10	3374.72	-3599.48	-86.65	1682311.57	14339832.38	39°29'18.5968"N	80°51'5.4305"W	3600.52	181.379	0.68	-0.46	-0.50	



Actual Wellpath Report

Wade Unit 1H AWP Proj: 23414'
Page 6 of 12



REFERENCE WELLPATH IDENTIFICATION			
Operator	ANTERO RESOURCES CORPORATION	Well	Wade Unit 1H
Field	Tyler	API	47-095-02729-0000
Facility	Blizzard Pad	Wellbore	Wade Unit 1H AWB
Slot	Slot #01		

WELLPATH DATA (254 stations)																
MD [ft]	Inclination [°]	Azimuth [°]	TVD [ft]	Vert Sect [ft]	North [ft]	East [ft]	Grid East [US ft]	Grid North [US ft]	Latitude	Longitude	Closure Dist [ft]	Closure Dir [°]	DLS [°/100ft]	Build Rate [°/100ft]	Turn Rate [°/100ft]	Comments
10802.00	89.630	161.200	6520.76	3469.72	-3689.36	-55.92	1682342.29	14339742.53	39°29'17.7079"N	80°51'5.0404"W	3689.79	180.868	0.17	0.06	0.16	
10897.00	89.380	161.070	6521.58	3564.71	-3779.26	-25.20	1682373.00	14339652.67	39°29'16.8189"N	80°51'4.6505"W	3779.34	180.382	0.30	-0.26	-0.14	
10991.00	89.600	160.510	6522.42	3658.71	-3868.02	5.72	1682403.91	14339563.95	39°29'15.9412"N	80°51'4.2579"W	3868.02	179.915	0.64	0.23	-0.60	
11086.00	89.820	161.350	6522.90	3753.71	-3957.80	36.76	1682434.94	14339474.20	39°29'15.0533"N	80°51'3.8640"W	3957.97	179.468	0.91	0.23	0.88	
11181.00	89.320	159.930	6523.61	3848.70	-4047.43	68.25	1682466.42	14339384.61	39°29'14.1670"N	80°51'3.4642"W	4048.00	179.034	1.58	-0.53	-1.49	
11276.00	89.350	160.890	6524.71	3943.69	-4136.92	100.10	1682498.25	14339295.15	39°29'13.2820"N	80°51'3.0599"W	4138.13	178.614	1.01	0.03	1.01	
11371.00	89.820	162.510	6525.40	4038.68	-4227.11	129.93	1682528.07	14339205.00	39°29'12.3901"N	80°51'2.6813"W	4229.11	178.239	1.78	0.49	1.71	
11464.00	89.260	162.330	6526.15	4131.64	-4315.76	158.02	1682556.15	14339116.38	39°29'11.5134"N	80°51'2.3250"W	4318.66	177.903	0.63	-0.60	-0.19	
11558.00	89.660	161.930	6527.03	4225.62	-4405.23	186.86	1682584.98	14339026.96	39°29'10.6288"N	80°51'1.9590"W	4409.19	177.571	0.60	0.43	-0.43	
11653.00	89.140	161.000	6528.03	4320.61	-4495.29	217.06	1682615.16	14338936.93	39°29'9.7381"N	80°51'1.5758"W	4500.53	177.236	1.12	-0.55	-0.98	
11748.00	90.220	162.860	6528.56	4415.59	-4585.60	246.52	1682644.61	14338846.66	39°29'8.8451"N	80°51'1.2019"W	4592.22	176.923	2.26	1.14	1.96	
11842.00	89.420	162.380	6528.86	4509.55	-4675.31	274.60	1682672.68	14338756.98	39°29'7.9581"N	80°51'0.8457"W	4683.36	176.639	0.99	-0.85	-0.51	
11936.00	89.910	162.730	6529.41	4603.51	-4764.98	302.78	1682700.85	14338667.35	39°29'7.0713"N	80°51'0.4882"W	4774.59	176.364	0.64	0.52	0.37	
12031.00	89.200	161.380	6530.14	4698.49	-4855.35	332.05	1682730.11	14338577.01	39°29'6.1776"N	80°51'0.1168"W	4866.69	176.088	1.61	-0.75	-1.42	
12125.00	90.490	162.700	6530.40	4792.47	-4944.77	361.03	1682759.08	14338487.63	39°29'5.2934"N	80°50'59.7490"W	4957.93	175.824	1.96	1.37	1.40	
12220.00	89.570	162.430	6530.35	4887.43	-5035.40	389.50	1682787.53	14338397.03	39°29'4.3972"N	80°50'59.3879"W	5050.44	175.577	1.01	-0.97	-0.28	
12315.00	89.540	162.620	6531.09	4982.39	-5126.02	418.02	1682816.05	14338306.45	39°29'3.5012"N	80°50'59.0260"W	5143.03	175.338	0.20	-0.03	0.20	
12410.00	89.570	162.480	6531.82	5077.36	-5216.64	446.51	1682844.52	14338215.87	39°29'2.6050"N	80°50'58.6646"W	5235.72	175.108	0.15	0.03	-0.15	
12504.00	89.820	162.790	6532.32	5171.31	-5306.36	474.57	1682872.57	14338126.19	39°29'1.7179"N	80°50'58.3087"W	5327.53	174.889	0.42	0.27	0.33	
12599.00	89.660	162.230	6532.75	5266.28	-5396.96	503.12	1682901.10	14338035.62	39°29'0.8219"N	80°50'57.9465"W	5420.36	174.674	0.61	-0.17	-0.59	
12693.00	89.750	162.690	6533.24	5360.25	-5486.59	531.44	1682929.42	14337946.02	39°28'59.9356"N	80°50'57.5872"W	5512.27	174.467	0.50	0.10	0.49	
12787.00	89.820	162.540	6533.59	5454.21	-5576.30	559.53	1682957.50	14337856.35	39°28'59.0485"N	80°50'57.2309"W	5604.30	174.270	0.18	0.07	-0.16	
12881.00	89.690	161.270	6533.99	5548.19	-5665.64	588.73	1682986.68	14337767.04	39°28'58.1650"N	80°50'56.8604"W	5696.15	174.068	1.36	-0.14	-1.35	
12976.00	89.660	161.310	6534.53	5643.19	-5755.62	619.20	1683017.14	14337677.10	39°28'57.2752"N	80°50'56.4737"W	5788.83	173.860	0.05	-0.03	0.04	
13070.00	89.690	162.250	6535.07	5737.18	-5844.91	648.59	1683046.52	14337587.85	39°28'56.3923"N	80°50'56.1008"W	5880.78	173.668	1.00	0.03	1.00	
13165.00	89.540	161.870	6535.70	5832.16	-5935.29	677.85	1683075.77	14337497.51	39°28'55.4985"N	80°50'55.7296"W	5973.87	173.485	0.43	-0.16	-0.40	
13260.00	89.690	161.820	6536.34	5927.15	-6025.55	707.45	1683105.36	14337407.28	39°28'54.6059"N	80°50'55.3540"W	6066.94	173.304	0.17	0.16	-0.05	
13355.00	89.600	161.820	6536.93	6022.13	-6115.81	737.09	1683134.99	14337317.06	39°28'53.7134"N	80°50'54.9779"W	6160.07	173.128	0.09	-0.09	0.00	
13450.00	89.880	161.850	6537.36	6117.12	-6206.07	766.71	1683164.59	14337226.83	39°28'52.8208"N	80°50'54.6021"W	6253.26	172.957	0.30	0.29	0.03	
13544.00	89.690	161.980	6537.71	6211.11	-6295.43	795.89	1683193.76	14337137.51	39°28'51.9371"N	80°50'54.2319"W	6345.54	172.795	0.24	-0.20	0.14	



Actual Wellpath Report

Wade Unit 1H AWP Proj: 23414'
Page 7 of 12



REFERENCE WELLPATH IDENTIFICATION			
Operator	ANTERO RESOURCES CORPORATION	Well	Wade Unit 1H
Field	Tyler	API	47-095-02729-0000
Facility	Blizzard Pad	Wellbore	Wade Unit 1H AWB
Slot	Slot #01		

WELLPATH DATA (254 stations)																
MD [ft]	Inclination [°]	Azimuth [°]	TVD [ft]	Vert Sect [ft]	North [ft]	East [ft]	Grid East [US ft]	Grid North [US ft]	Latitude	Longitude	Closure Dist [ft]	Closure Dir [°]	DLS [°/100ft]	Build Rate [°/100ft]	Turn Rate [°/100ft]	Comments
13638.00	89.600	162.090	6538.30	6305.09	-6384.85	824.88	1683222.74	14337048.13	39°28'51.0529"N	80°50'53.8641"W	6437.91	172.639	0.15	-0.10	0.12	
13733.00	89.780	162.080	6538.81	6400.07	-6475.24	854.10	1683251.95	14336957.77	39°28'50.1591"N	80°50'53.4933"W	6531.32	172.486	0.19	0.19	-0.01	
13827.00	89.690	161.850	6539.25	6494.06	-6564.62	883.20	1683281.04	14336868.43	39°28'49.2752"N	80°50'53.1241"W	6623.77	172.337	0.26	-0.10	-0.24	
13922.00	89.660	161.720	6539.78	6589.05	-6654.86	912.90	1683310.72	14336778.23	39°28'48.3828"N	80°50'52.7474"W	6717.18	172.189	0.14	-0.03	-0.14	
14016.00	89.850	161.380	6540.19	6683.04	-6744.02	942.65	1683340.46	14336689.09	39°28'47.5011"N	80°50'52.3699"W	6809.58	172.043	0.41	0.20	-0.36	
14111.00	89.630	161.870	6540.62	6778.03	-6834.18	972.59	1683370.39	14336598.97	39°28'46.6095"N	80°50'51.9899"W	6903.04	171.900	0.57	-0.23	0.52	
14206.00	89.850	161.990	6541.05	6873.02	-6924.49	1002.06	1683399.85	14336508.70	39°28'45.7164"N	80°50'51.6161"W	6996.62	171.766	0.26	0.23	0.13	
14301.00	89.600	161.900	6541.50	6968.00	-7014.81	1031.50	1683429.28	14336418.41	39°28'44.8233"N	80°50'51.2425"W	7090.25	171.635	0.28	-0.26	-0.09	
14395.00	89.420	161.020	6542.31	7062.00	-7103.93	1061.39	1683459.16	14336329.33	39°28'43.9420"N	80°50'50.8633"W	7182.78	171.502	0.96	-0.19	-0.94	
14490.00	89.850	161.020	6542.91	7156.99	-7193.76	1092.29	1683490.04	14336239.53	39°28'43.0536"N	80°50'50.4712"W	7276.22	171.366	0.45	0.45	0.00	
14584.00	89.600	160.570	6543.36	7250.99	-7282.53	1123.21	1683520.95	14336150.80	39°28'42.1758"N	80°50'50.0788"W	7368.64	171.232	0.55	-0.27	-0.48	
14679.00	89.510	161.090	6544.10	7345.99	-7372.26	1154.40	1683552.13	14336061.11	39°28'41.2884"N	80°50'49.6830"W	7462.10	171.100	0.56	-0.09	0.55	
14774.00	89.380	160.650	6545.02	7440.98	-7462.01	1185.53	1683583.25	14335971.39	39°28'40.4009"N	80°50'49.2879"W	7555.60	170.973	0.48	-0.14	-0.46	
14869.00	89.850	161.330	6545.66	7535.98	-7551.83	1216.48	1683614.18	14335881.61	39°28'39.5127"N	80°50'48.8952"W	7649.18	170.849	0.87	0.49	0.72	
14964.00	89.450	160.980	6546.24	7630.98	-7641.73	1247.16	1683644.85	14335791.74	39°28'38.6236"N	80°50'48.5059"W	7742.83	170.731	0.56	-0.42	-0.37	
15058.00	89.570	161.110	6547.05	7724.97	-7730.63	1277.69	1683675.37	14335702.88	39°28'37.7444"N	80°50'48.1184"W	7835.51	170.615	0.19	0.13	0.14	
15152.00	89.600	160.940	6547.73	7818.97	-7819.52	1308.26	1683705.93	14335614.03	39°28'36.8654"N	80°50'47.7306"W	7928.21	170.502	0.18	0.03	-0.18	
15342.00	89.660	160.980	6548.95	8008.97	-7999.12	1370.24	1683767.88	14335434.50	39°28'35.0893"N	80°50'46.9441"W	8115.63	170.280	0.04	0.03	0.02	
15436.00	89.750	161.390	6549.44	8102.97	-8088.10	1400.56	1683798.19	14335345.56	39°28'34.2094"N	80°50'46.5594"W	8208.46	170.176	0.45	0.10	0.44	
15530.00	90.400	161.780	6549.31	8196.96	-8177.28	1430.25	1683827.87	14335256.41	39°28'33.3274"N	80°50'46.1827"W	8301.42	170.079	0.81	0.69	0.41	
15623.00	90.710	161.620	6548.41	8289.95	-8265.58	1459.45	1683857.06	14335168.15	39°28'32.4543"N	80°50'45.8122"W	8393.43	169.987	0.38	0.33	-0.17	
15718.00	90.920	161.030	6547.06	8384.94	-8355.56	1489.87	1683887.46	14335078.20	39°28'31.5644"N	80°50'45.4263"W	8487.35	169.890	0.66	0.22	-0.62	
15812.00	90.580	161.210	6545.83	8478.93	-8444.50	1520.28	1683917.86	14334989.30	39°28'30.6849"N	80°50'45.0404"W	8580.26	169.794	0.41	-0.36	0.19	
16000.00	90.490	161.010	6544.08	8666.92	-8622.37	1581.14	1683978.70	14334811.50	39°28'28.9260"N	80°50'44.2681"W	8766.14	169.609	0.12	-0.05	-0.11	
16094.00	89.660	161.320	6543.95	8760.92	-8711.33	1611.49	1684009.04	14334722.57	39°28'28.0462"N	80°50'43.8831"W	8859.13	169.519	0.94	-0.88	0.33	
16189.00	89.380	160.630	6544.75	8855.91	-8801.14	1642.46	1684039.99	14334632.80	39°28'27.1580"N	80°50'43.4902"W	8953.08	169.429	0.78	-0.29	-0.73	
16283.00	89.510	160.970	6545.66	8949.91	-8889.91	1673.37	1684070.89	14334544.07	39°28'26.2802"N	80°50'43.0979"W	9046.03	169.340	0.39	0.14	0.36	
16378.00	89.320	160.940	6546.63	9044.90	-8979.70	1704.37	1684101.88	14334454.31	39°28'25.3922"N	80°50'42.7046"W	9140.02	169.253	0.20	-0.20	-0.03	
16472.00	89.110	160.970	6547.92	9138.89	-9068.55	1735.04	1684132.53	14334365.50	39°28'24.5136"N	80°50'42.3155"W	9233.03	169.169	0.23	-0.22	0.03	
16567.00	89.170	161.280	6549.34	9233.88	-9158.43	1765.77	1684163.25	14334275.65	39°28'23.6247"N	80°50'41.9256"W	9327.10	169.087	0.33	0.06	0.33	



Actual Wellpath Report

Wade Unit 1H AWP Proj: 23414'
Page 8 of 12



REFERENCE WELLPATH IDENTIFICATION			
Operator	ANTERO RESOURCES CORPORATION	Well	Wade Unit 1H
Field	Tyler	API	47-095-02729-0000
Facility	Blizzard Pad	Wellbore	Wade Unit 1H AWB
Slot	Slot #01		

WELLPATH DATA (254 stations)																
MD (ft)	Inclination (°)	Azimuth (°)	TVD (ft)	Vert Sect (ft)	North (ft)	East (ft)	Grid East (US ft)	Grid North (US ft)	Latitude	Longitude	Closure Dist (ft)	Closure Dir (°)	DLS (°/100ft)	Build Rate (°/100ft)	Turn Rate (°/100ft)	Comments
1666.00	88.800	160.900	6551.01	9327.87	-9247.34	1796.23	1684193.70	14334186.78	39°28'22.7454"N	80°50'41.5391"W	9420.18	169.008	0.56	-0.39	-0.40	
16756.00	88.980	161.170	6552.85	9422.85	-9337.17	1827.09	1684224.55	14334096.99	39°28'21.8571"N	80°50'41.1475"W	9514.25	168.928	0.34	0.19	0.28	
16849.00	89.820	160.910	6553.82	9515.84	-9425.12	1857.31	1684254.76	14334009.07	39°28'20.9874"N	80°50'40.7641"W	9606.37	168.852	0.95	0.90	-0.28	
16944.00	88.800	161.300	6554.97	9610.84	-9514.99	1888.07	1684285.50	14333919.24	39°28'20.0986"N	80°50'40.3738"W	9700.51	168.777	1.15	-1.07	0.41	
17038.00	88.950	161.120	6556.81	9704.82	-9603.96	1918.34	1684315.76	14333830.30	39°28'19.2187"N	80°50'39.9898"W	9793.68	168.704	0.25	0.16	-0.19	
17132.00	88.920	161.310	6558.56	9798.80	-9692.94	1948.61	1684346.02	14333741.36	39°28'18.3388"N	80°50'39.6058"W	9886.87	168.633	0.20	-0.03	0.20	
17227.00	88.650	161.140	6560.57	9893.78	-9782.86	1979.18	1684376.57	14333651.47	39°28'17.4495"N	80°50'39.2180"W	9981.06	168.563	0.34	-0.28	-0.18	
17321.00	88.710	160.900	6562.74	9987.75	-9871.73	2009.74	1684407.13	14333562.64	39°28'16.5707"N	80°50'38.8302"W	10074.23	168.493	0.26	0.06	-0.26	
17415.00	88.740	161.100	6564.83	10081.73	-9960.59	2040.34	1684437.71	14333473.82	39°28'15.6920"N	80°50'38.4420"W	10167.41	168.424	0.22	0.03	0.21	
17509.00	88.620	160.920	6567.00	10175.70	-10049.45	2070.91	1684468.28	14333384.99	39°28'14.8132"N	80°50'38.0540"W	10260.61	168.356	0.23	-0.13	-0.19	
17603.00	88.520	160.580	6569.34	10269.67	-10138.16	2101.90	1684499.25	14333296.31	39°28'13.9359"N	80°50'37.6610"W	10353.76	168.287	0.38	-0.11	-0.36	
17698.00	89.540	161.150	6570.95	10364.66	-10227.90	2133.03	1684530.37	14333206.61	39°28'13.0484"N	80°50'37.2659"W	10447.96	168.220	1.23	1.07	0.60	
17792.00	89.170	159.540	6572.01	10458.64	-10316.42	2164.65	1684561.97	14333118.13	39°28'12.1731"N	80°50'36.8648"W	10541.07	168.150	1.76	-0.39	-1.71	
17886.00	89.450	159.500	6573.14	10552.61	-10404.47	2197.53	1684594.84	14333030.11	39°28'11.3023"N	80°50'36.4474"W	10634.01	168.074	0.30	0.30	-0.04	
17981.00	89.290	159.420	6574.19	10647.57	-10493.42	2230.86	1684628.16	14332941.19	39°28'10.4225"N	80°50'36.0243"W	10727.94	167.998	0.19	-0.17	-0.08	
18076.00	89.290	159.410	6575.36	10742.52	-10582.35	2264.26	1684661.55	14332852.30	39°28'9.5430"N	80°50'35.6004"W	10821.88	167.923	0.01	0.00	-0.01	
18170.00	89.420	159.850	6576.42	10836.49	-10670.47	2296.98	1684694.25	14332764.22	39°28'8.6716"N	80°50'35.1852"W	10914.90	167.852	0.49	0.14	0.47	
18265.00	89.350	159.810	6577.44	10931.47	-10759.63	2329.73	1684726.99	14332675.09	39°28'7.7897"N	80°50'34.7695"W	11008.97	167.783	0.08	-0.07	-0.04	
18358.00	89.320	159.660	6578.52	11024.44	-10846.87	2361.94	1684759.19	14332587.89	39°28'6.9270"N	80°50'34.3608"W	11101.05	167.715	0.16	-0.03	-0.16	
18452.00	89.350	159.900	6579.61	11118.41	-10935.07	2394.43	1684791.66	14332499.72	39°28'6.0547"N	80°50'33.9485"W	11194.16	167.649	0.26	0.03	0.26	
18547.00	89.540	160.200	6580.53	11213.39	-11024.37	2426.84	1684824.06	14332410.46	39°28'5.1716"N	80°50'33.5372"W	11288.32	167.585	0.37	0.20	0.32	
18641.00	89.380	160.220	6581.42	11307.38	-11112.81	2458.67	1684855.87	14332322.05	39°28'4.2969"N	80°50'33.1334"W	11381.55	167.524	0.17	-0.17	0.02	
18735.00	89.290	159.900	6582.51	11401.36	-11201.17	2490.72	1684887.92	14332233.73	39°28'3.4231"N	80°50'32.7266"W	11474.75	167.464	0.35	-0.10	-0.34	
18830.00	89.510	160.180	6583.50	11496.35	-11290.46	2523.15	1684920.33	14332144.48	39°28'2.5400"N	80°50'32.3151"W	11568.96	167.403	0.37	0.23	0.29	
18924.00	89.660	161.090	6584.18	11590.34	-11379.14	2554.32	1684951.49	14332055.83	39°28'1.6630"N	80°50'31.9197"W	11662.30	167.348	0.98	0.16	0.97	
19018.00	89.350	159.900	6585.00	11684.33	-11467.74	2585.70	1684982.86	14331967.27	39°28'0.7868"N	80°50'31.5215"W	11755.63	167.294	1.31	-0.33	-1.27	
19113.00	89.720	160.280	6585.77	11779.32	-11557.06	2618.05	1685015.19	14331877.99	39°27'59.9035"N	80°50'31.1110"W	11849.88	167.236	0.56	0.39	0.40	
19207.00	89.600	159.960	6586.32	11873.30	-11645.45	2650.02	1685047.15	14331789.62	39°27'59.0293"N	80°50'30.7054"W	11943.16	167.180	0.36	-0.13	-0.34	
19302.00	89.690	159.830	6586.91	11968.29	-11734.66	2682.67	1685079.79	14331700.45	39°27'58.1470"N	80°50'30.2910"W	12037.40	167.123	0.17	0.09	-0.14	
19397.00	90.060	161.340	6587.12	12063.28	-11824.26	2714.25	1685111.35	14331610.89	39°27'57.2610"N	80°50'29.8904"W	12131.79	167.072	1.64	0.39	1.59	



Actual Wellpath Report

Wade Unit 1H AWP Proj: 23414'
Page 9 of 12



REFERENCE WELLPATH IDENTIFICATION			
Operator	ANTERO RESOURCES CORPORATION	Well	Wade Unit 1H
Field	Tyler	API	47-095-02729-0000
Facility	Blizzard Pad	Wellbore	Wade Unit 1H AWB
Slot	Slot #01		

WELLPATH DATA (254 stations)																
MD	Inclination	Azimuth	TVD	Vert Sect	North	East	Grid East	Grid North	Latitude	Longitude	Closure Dist	Closure Dir	DLS	Build Rate	Turn Rate	Comments
[ft]	[°]	[°]	[ft]	[ft]	[ft]	[ft]	[US ft]	[US ft]			[ft]	[°]	[°/100ft]	[°/100ft]	[°/100ft]	
19492.00	89.850	161.080	6587.19	12158.28	-11914.19	2744.85	1685141.94	14331520.99	39°27'56.3716"N	80°50'29.5023"W	12226.29	167.026	0.35	-0.22	-0.27	
19585.00	89.820	160.870	6587.46	12251.28	-12002.11	2775.16	1685172.24	14331433.11	39°27'55.5021"N	80°50'29.1177"W	12318.78	166.981	0.23	-0.03	-0.23	
19680.00	89.820	160.680	6587.76	12346.28	-12091.82	2806.44	1685203.51	14331343.44	39°27'54.6150"N	80°50'28.7209"W	12413.22	166.933	0.20	0.00	-0.20	
19775.00	89.850	161.140	6588.03	12441.28	-12181.59	2837.51	1685234.57	14331253.70	39°27'53.7272"N	80°50'28.3267"W	12507.70	166.888	0.49	0.03	0.48	
19869.00	89.880	161.330	6588.26	12535.28	-12270.59	2867.75	1685264.80	14331164.73	39°27'52.8470"N	80°50'27.9432"W	12601.25	166.846	0.20	0.03	0.20	
19964.00	89.850	160.930	6588.48	12630.27	-12360.49	2898.48	1685295.51	14331074.88	39°27'51.9580"N	80°50'27.5534"W	12695.78	166.803	0.42	-0.03	-0.42	
20058.00	90.030	161.230	6588.58	12724.27	-12449.41	2928.96	1685325.98	14330985.99	39°27'51.0786"N	80°50'27.1668"W	12789.32	166.761	0.37	0.19	0.32	
20153.00	89.820	161.430	6588.70	12819.27	-12539.41	2959.37	1685356.37	14330896.03	39°27'50.1886"N	80°50'26.7811"W	12883.89	166.721	0.31	-0.22	0.21	
20247.00	89.910	161.110	6588.92	12913.27	-12628.43	2989.55	1685386.55	14330807.04	39°27'49.3082"N	80°50'26.3983"W	12977.47	166.681	0.35	0.10	-0.34	
20342.00	89.820	160.990	6589.15	13008.27	-12718.28	3020.40	1685417.39	14330717.22	39°27'48.4196"N	80°50'26.0069"W	13072.01	166.641	0.16	-0.09	-0.13	
20437.00	89.880	161.100	6589.40	13103.27	-12808.13	3051.26	1685448.23	14330627.41	39°27'47.5311"N	80°50'25.6155"W	13166.56	166.600	0.13	0.06	0.12	
20531.00	89.750	161.200	6589.70	13197.27	-12897.09	3081.63	1685478.59	14330538.49	39°27'46.6513"N	80°50'25.2303"W	13260.14	166.562	0.17	-0.14	0.11	
20626.00	89.690	161.110	6590.16	13292.27	-12987.00	3112.32	1685509.26	14330448.62	39°27'45.7622"N	80°50'24.8411"W	13354.72	166.523	0.11	-0.06	-0.09	
20720.00	89.780	161.270	6590.60	13386.27	-13075.97	3142.63	1685539.56	14330359.68	39°27'44.8823"N	80°50'24.4567"W	13448.32	166.486	0.20	0.10	0.17	
20814.00	89.660	160.850	6591.06	13480.26	-13164.88	3173.14	1685570.06	14330270.80	39°27'44.0030"N	80°50'24.0697"W	13541.90	166.448	0.46	-0.13	-0.45	
20909.00	89.660	160.990	6591.62	13575.26	-13254.66	3204.19	1685601.10	14330181.06	39°27'43.1151"N	80°50'23.6758"W	13636.46	166.410	0.15	0.00	0.15	
21003.00	89.910	161.530	6591.98	13669.26	-13343.68	3234.39	1685631.28	14330092.08	39°27'42.2348"N	80°50'23.2928"W	13730.08	166.375	0.63	0.27	0.57	
21097.00	89.850	161.350	6592.17	13763.26	-13432.79	3264.31	1685661.19	14330003.00	39°27'41.3536"N	80°50'22.9133"W	13823.73	166.341	0.20	-0.06	-0.19	
21191.00	89.780	160.800	6592.48	13857.26	-13521.71	3294.80	1685691.67	14329914.12	39°27'40.4742"N	80°50'22.5267"W	13917.34	166.306	0.59	-0.07	-0.59	
21286.00	89.690	161.230	6592.91	13952.25	-13611.54	3325.70	1685722.56	14329824.33	39°27'39.5859"N	80°50'22.1347"W	14011.93	166.270	0.46	-0.09	0.45	
21381.00	89.540	161.270	6593.55	14047.25	-13701.50	3356.24	1685753.08	14329734.41	39°27'38.6963"N	80°50'21.7474"W	14106.57	166.236	0.16	-0.16	0.04	
21475.00	89.540	161.080	6594.31	14141.25	-13790.46	3386.57	1685783.40	14329645.47	39°27'37.8164"N	80°50'21.3627"W	14200.20	166.203	0.20	0.00	-0.20	
21569.00	89.570	161.370	6595.04	14235.24	-13879.46	3416.82	1685813.64	14329556.51	39°27'36.9363"N	80°50'20.9790"W	14293.85	166.170	0.31	0.03	0.31	
21663.00	89.540	161.410	6595.77	14329.24	-13968.54	3446.82	1685843.63	14329467.47	39°27'36.0553"N	80°50'20.5986"W	14387.52	166.139	0.05	-0.03	0.04	
21758.00	89.480	161.230	6596.58	14424.23	-14058.53	3477.24	1685874.04	14329377.51	39°27'35.1654"N	80°50'20.2127"W	14482.18	166.107	0.20	-0.06	-0.19	
21852.00	89.260	161.240	6597.61	14518.23	-14147.53	3507.48	1685904.27	14329288.55	39°27'34.2852"N	80°50'19.8293"W	14575.84	166.076	0.23	-0.23	0.01	
21947.00	89.230	161.150	6598.87	14613.22	-14237.45	3538.10	1685934.87	14329198.66	39°27'33.3959"N	80°50'19.4409"W	14670.49	166.044	0.10	-0.03	-0.09	
22041.00	89.320	161.580	6600.06	14707.21	-14326.52	3568.13	1685964.90	14329109.63	39°27'32.5152"N	80°50'19.0601"W	14764.17	166.015	0.47	0.10	0.46	
22135.00	89.170	161.060	6601.29	14801.20	-14415.56	3598.24	1685994.99	14329020.63	39°27'31.6346"N	80°50'18.6783"W	14857.85	165.985	0.58	-0.16	-0.55	
22230.00	89.110	161.080	6602.72	14896.19	-14505.41	3629.05	1686025.79	14328930.81	39°27'30.7460"N	80°50'18.2875"W	14952.49	165.954	0.07	-0.06	0.02	



Actual Wellpath Report

Wade Unit 1H AWP Proj: 23414'

Page 10 of 12



REFERENCE WELLPATH IDENTIFICATION			
Operator	ANTERO RESOURCES CORPORATION	Well	Wade Unit 1H
Field	Tyler	API	47-095-02729-0000
Facility	Blizzard Pad	Wellbore	Wade Unit 1H AWB
Slot	Slot #01		

WELLPATH DATA (254 stations) † = interpolated, ‡ = extrapolated station																
MD [ft]	Inclination [°]	Azimuth [°]	TVD [ft]	Vert Sect [ft]	North [ft]	East [ft]	Grid East [US ft]	Grid North [US ft]	Latitude	Longitude	Closure Dist [ft]	Closure Dir [°]	DLS [°/100ft]	Build Rate [°/100ft]	Turn Rate [°/100ft]	Comments
22324.00	89.290	161.220	6604.03	14990.18	-14594.36	3659.42	1686056.15	1432884.90	39°27'29.8663"N	80°50'17.9023"W	15046.15	165.924	0.24	0.19	0.15	
22419.00	89.320	161.160	6605.18	15085.17	-14684.28	3690.05	1686086.76	14328752.01	39°27'28.9771"N	80°50'17.5139"W	15140.82	165.894	0.07	0.03	-0.06	
22513.00	89.290	161.340	6606.32	15179.16	-14773.28	3720.26	1686116.97	14328663.04	39°27'28.0969"N	80°50'17.1308"W	15234.51	165.865	0.19	-0.03	0.19	
22607.00	89.230	161.610	6607.54	15273.15	-14862.41	3750.13	1686146.82	14328573.96	39°27'27.2155"N	80°50'16.7521"W	15328.23	165.839	0.29	-0.06	0.29	
22702.00	89.940	161.220	6608.23	15368.14	-14952.45	3780.40	1686177.08	14328483.95	39°27'26.3251"N	80°50'16.3681"W	15422.94	165.811	0.85	0.75	-0.41	
22796.00	89.780	161.090	6608.46	15462.14	-15041.41	3810.77	1686207.43	14328395.03	39°27'25.4453"N	80°50'15.9831"W	15516.63	165.783	0.22	-0.17	-0.14	
22890.00	89.660	161.450	6608.92	15556.14	-15130.43	3840.95	1686237.60	14328306.04	39°27'24.5649"N	80°50'15.6003"W	15610.34	165.756	0.40	-0.13	0.38	
22985.00	89.850	161.370	6609.32	15651.14	-15220.47	3871.23	1686267.88	14328216.03	39°27'23.6744"N	80°50'15.2163"W	15705.07	165.730	0.22	0.20	-0.08	
23080.00	89.850	161.160	6609.57	15746.14	-15310.44	3901.75	1686298.38	14328126.10	39°27'22.7847"N	80°50'14.8294"W	15799.78	165.703	0.22	0.00	-0.22	
23174.00	89.690	161.390	6609.95	15840.13	-15399.46	3931.92	1686328.54	14328037.12	39°27'21.9043"N	80°50'14.4467"W	15893.50	165.677	0.30	-0.17	0.24	
23268.00	89.720	161.510	6610.43	15934.13	-15488.58	3961.83	1686358.43	14327948.04	39°27'21.0230"N	80°50'14.0675"W	15987.25	165.652	0.13	0.03	0.13	
23363.00	89.690	161.090	6610.92	16029.13	-15578.56	3992.29	1686388.88	14327858.09	39°27'20.1332"N	80°50'13.6813"W	16081.98	165.626	0.44	-0.03	-0.44	
23391.00	89.750	161.100	6611.06	16057.13	-15605.05	4001.36	1686397.95	14327831.61	39°27'19.8712"N	80°50'13.5662"W	16109.89	165.618	0.22	0.21	0.04	
23414.00	89.750	161.100	6611.16	16080.13	-15626.81	4008.81	1686405.39	14327809.86	39°27'19.6560"N	80°50'13.4718"W	16132.82	165.612	0.00	0.00	0.00	Projected MD at TD: 23414'

HOLE & CASING SECTIONS - Ref Wellbore: Wade Unit 1H AWB Ref Wellpath: Wade Unit 1H AWP Proj: 23414'									
String/Diameter	Start MD [ft]	End MD [ft]	Interval [ft]	Start TVD [ft]	End TVD [ft]	Start N/S [ft]	Start E/W [ft]	End N/S [ft]	End E/W [ft]
20in Conductor	25.50	106.00	80.50	25.50	106.00	0.00	0.00	0.07	-0.21
17.5in Open Hole	106.00	403.00	297.00	106.00	402.99	0.07	-0.21	0.81	-2.13
13.375in Casing Surface	25.50	383.00	357.50	25.50	382.99	0.00	0.00	0.75	-1.93
12.25in Open Hole	403.00	2694.00	2291.00	402.99	2623.75	0.81	-2.13	154.78	-497.30
9.625in Casing Intermediate	25.50	2674.00	2648.50	25.50	2604.37	0.00	0.00	154.01	-492.41
8.75in Open Hole	2694.00	5799.00	3105.00	2623.75	5591.02	154.78	-497.30	482.50	-1346.21
8.5in Open Hole	5799.00	23414.00	17615.00	5591.02	6611.16	482.50	-1346.21	-15626.81	4008.81
5.5in Casing Production	25.50	23414.00	23388.50	25.50	6611.16	0.00	0.00	-15626.81	4008.81



Actual Wellpath Report
 Wade Unit 1H AWP Proj: 23414'
 Page 11 of 12



REFERENCE WELLPATH IDENTIFICATION			
Operator	ANTERO RESOURCES CORPORATION	Well	Wade Unit 1H
Field	Tyler	API	47-095-02729-0000
Facility	Blizzard Pad	Wellbore	Wade Unit 1H AWB
Slot	Slot #01		

TARGETS								
Name	TVD [ft]	North [ft]	East [ft]	Grid East [US ft]	Grid North [US ft]	Latitude	Longitude	Shape
Wade Unit 1H POE Rev-3	6472.00	-35.01	-1351.54	1681047.19	14343395.42	39°29'53.8460"N	80°51'21.4910"W	point
Wade Unit 1H BHL Rev-3	6497.00	-15639.51	4028.81	1686425.39	14327797.16	39°27'19.5301"N	80°50'13.2170"W	point
Wade Unit 1H LP Rev-3	6497.00	-212.34	-1290.40	1681108.31	14343218.16	39°29'52.0924"N	80°51'20.7147"W	point
Wade Unit 1H 50' L/R Hard Line	7000.00	-7837.26	1338.63	1683736.29	14335596.29	39°28'36.6896"N	80°50'47.3436"W	rectangle
2D Rectangle 16506 x 100.								

WELLPATH COMPOSITION - Ref Wellbore: Wade Unit 1H AWB Ref Wellpath: Wade Unit 1H AWP Proj: 23414'						
Start MD [ft]	End MD [ft]	Positional Uncertainty Model	Log Name/Comment	Wellbore	Survey Date	
25.50	384.00	Gyrodata 2015 - GC+WR+DPIPE	01_Gyrodata MS Gyro <17-1/2"> (100'-384')	Wade Unit 1H AWB	01/May/2021	
384.00	2619.00	BH NaviTrak (2019) (Axial Corr+HRGM)	02_APS EM <12-1/4"> (384')(506'-2619')	Wade Unit 1H AWB	01/May/2021	
2619.00	5734.00	BH NaviTrak (2019) (Axial Corr+HRGM)	03_APS EM <8-3/4"> (2619')(2707'-5734')	Wade Unit 1H AWB	06/Jul/2021	
5734.00	23414.00	BH AutoTrak Curve/eXpress (2019) (HRGM, Short spacing)	04_BH AT Curve <8-1/2"> (5734')(5796'-23391')	Wade Unit 1H AWB	06/Jul/2021	



Actual Wellpath Report

Wade Unit 1H AWP Proj: 23414'

Page 12 of 12



REFERENCE WELLPATH IDENTIFICATION			
Operator	ANTERO RESOURCES CORPORATION	Well	Wade Unit 1H
Field	Tyler	API	47-095-02729-0000
Facility	Blizzard Pad	Wellbore	Wade Unit 1H AWB
Slot	Slot #01		

COMMENTS

Wellpath general comments

API: 47-095-02729-0000
BH Job #: 110883634
Rig: H&P 317
Duration: 7/8/2021-7/12/2021
Gyrodatta MS Gyro <17-1/2"> (100'-384')
APS EM <12-1/4"> (384')(506'-2619')
APS EM <8-3/4"> (2619')(2707'-5734')
BH AT Curve <8-1/2"> (5734')(5796'-23391')
Sycamore: 6442' MD
Middlesex: 6594' MD
Burkett: 6758' MD
Tully: 6811' MD
Marcellus POE: 6964' MD
Projected MD at TD: 23414'