



ANTERO RESOURCES CORPORATION

Location: Tyler County, WV
 Field: Tyler
 Facility: Thin Air Pad

Slot: Slot G
 Well: Axtel Unit 1H
 Wellbore: Axtel Unit 1H PWB

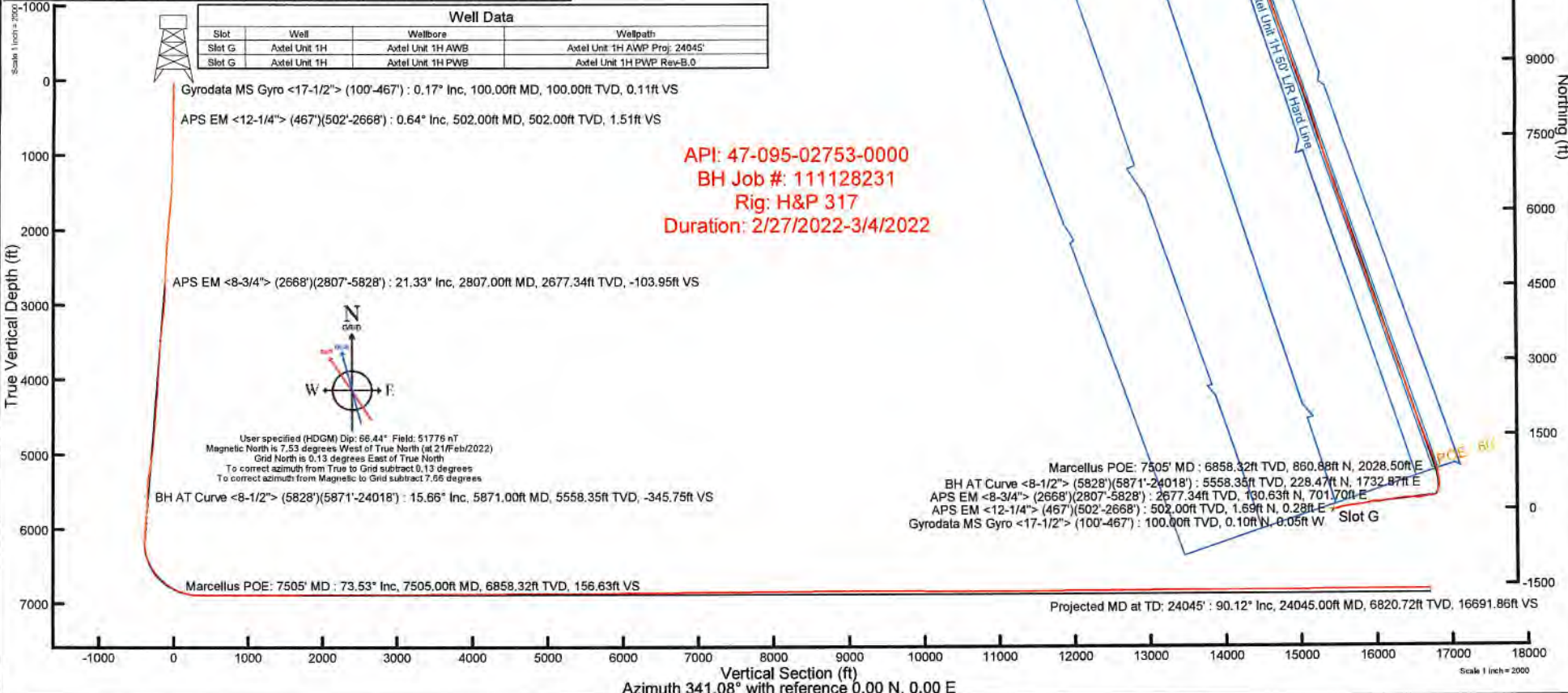


Plot reference wellpath is Axtel Unit 1H PWB Rev-B.0	Grid System: NAD83 / UTM Zone 17 North, US feet
True vertical depths are referenced to H&P 317 (RKB)	North Reference: Grid north
Reference wellpath measured depths are referenced to H&P 317 (RKB)	Scale: True distance
H&P 317 (RKB) to Mean True Level: 1225.5 feet	Coordinates are in feet referenced to Grid
Mean Sea Level to Ground level (At Slot: Slot G): +200 feet	Depths are in feet
Offset wellpath MDs are referenced to well path's detail MD datum	Created by: velasquez on 2022-03-28, Database: WS_MPL_EASTERN@S_Delta

Location Information				
Facility Name	Grid East (US ft)	Grid North (US ft)	Latitude	Longitude
Thin Air Pad	1698787.140	14354225.910	39°31'40.5880"N	80°47'34.7850"W
Slot	Local N (ft)	Local E (ft)	Grid East (US ft)	Grid North (US ft)
Slot G	0.00	0.00	1698787.140	14354225.910
Comment: Axtel Unit 1H				
H&P 317 (RKB) to Ground level (At Slot: Slot G)				25.5ft
Mean Sea Level to Ground level (At Slot: Slot G)				-1200ft
H&P 317 (RKB) to Mean Sea Level				1225.5ft

Well Profile Data							
Design Comment	MD (ft)	Inc (°)	Az (°)	TVD (ft)	Local N (ft)	Local E (ft)	VS (ft)
Tie On	2668.00	20.530	78.660	2547.50	118.51	653.80	-99.82
Proj. to Bottom	2737.00	20.530	78.660	2612.12	123.27	677.32	-103.01
Drill Out	2817.00	20.530	78.660	2687.04	128.79	704.83	-106.71
End of 3D Arc	2873.74	20.456	83.519	2740.20	131.86	724.44	-110.16
Curve KOP	6497.49	20.456	83.519	6135.44	274.81	1982.78	-382.95
POE	7494.60	74.514	341.080	6856.00	844.04	2003.60	148.77
Landing Pt.	7688.17	90.000	341.080	6882.00	1024.93	1941.59	340.00
BHL	24046.31	90.000	341.080	6882.00	16499.29	-3362.46	0.00

Well Data			
Slot	Well	Wellbore	Wellpath
Slot G	Axtel Unit 1H	Axtel Unit 1H AWP	Axtel Unit 1H AWP Proj: 24045'
Slot G	Axtel Unit 1H	Axtel Unit 1H PWB	Axtel Unit 1H PWB Rev-B.0





Actual Wellpath Report

Axtel Unit 1H AWP Proj: 24045'

Page 1 of 13



REFERENCE WELLPATH IDENTIFICATION			
Operator	ANTERO RESOURCES CORPORATION	Well	Axtel Unit 1H
Field	Tyler	API	47-095-02753-0000
Facility	Thin Air Pad	Wellbore	Axtel Unit 1H AWB
Slot	Slot G		

REPORT SETUP INFORMATION			
Projection System	NAD27 / UTM Zone 17 North, US feet	Software System	WellArchitect® 6.0
North Reference	Grid	User	Edsaryar
Scale	0.999604	Report Generated	28/Mar/2022 at 15:27
Convergence at slot	0.13° East	Database	WA_MPL_EASTERNUS_Defn

WELLPATH LOCATION						
	Local coordinates		Grid coordinates		Geographic coordinates	
	North[ft]	East[ft]	Easting[US ft]	Northing[US ft]	Latitude	Longitude
Slot Location	0.00	0.00	1698787.14	14354225.91	39°31'40.5880"N	80°47'34.7850"W
Facility Reference Pt			1698787.14	14354225.91	39°31'40.5880"N	80°47'34.7850"W
Field Reference Pt			0.00	0.00	0°00'0.0000"	85°29'19.3013"W

WELLPATH DATUM			
Calculation method	Minimum curvature	H&P 317 (RKB) to Facility Vertical Datum	1225.50ft
Horizontal Reference Pt	Slot	H&P 317 (RKB) to Mean Sea Level	1225.50ft
Vertical Reference Pt	H&P 317 (RKB)	H&P 317 (RKB) to Ground Level at Slot (Slot G)	25.50ft
MD Reference Pt	H&P 317 (RKB)	Section Origin	N 0.00, E 0.00 ft
Field Vertical Reference	Mean Sea Level	Section Azimuth	341.08°



Actual Wellpath Report

Axtel Unit 1H AWP Proj: 24045'

Page 2 of 13



REFERENCE WELLPATH IDENTIFICATION			
Operator	ANTERO RESOURCES CORPORATION	Well	Axtel Unit 1H
Field	Tyler	API	47-095-02753-0000
Facility	Thin Air Pad	Wellbore	Axtel Unit 1H AWB
Slot	Slot G		

WELLPATH DATA (258 stations) † = interpolated, ‡ = extrapolated station																
MD (ft)	Inclination (°)	Azimuth (°)	TVD (ft)	Vert Sect (ft)	North (ft)	East (ft)	Grid East (US ft)	Grid North (US ft)	Latitude	Longitude	Closure Dist (ft)	Closure Dir (°)	DLS (°/100ft)	Build Rate (°/100ft)	Turn Rate (°/100ft)	Comments
0.00†	0.000	335.480	0.00	0.00	0.00	0.00	1698787.14	14354225.91	39°31'40.5880"N	80°47'34.7850"W	0.00	0.000	0.00	0.00	0.00	
25.50	0.000	335.480	25.50	0.00	0.00	0.00	1698787.14	14354225.91	39°31'40.5880"N	80°47'34.7850"W	0.00	0.000	0.00	0.00	0.00	
100.00	0.170	335.480	100.00	0.11	0.10	-0.05	1698787.09	14354226.01	39°31'40.5890"N	80°47'34.7856"W	0.11	335.480	0.23	0.23	0.00	Gyrodata MS Gyro <17-1/2"> (100'-467')
200.00	0.180	14.230	200.00	0.39	0.39	-0.07	1698787.07	14354226.30	39°31'40.5918"N	80°47'34.7858"W	0.39	349.936	0.12	0.01	38.75	
300.00	0.190	2.610	300.00	0.67	0.71	-0.02	1698787.12	14354226.62	39°31'40.5950"N	80°47'34.7852"W	0.71	358.161	0.04	0.01	-11.62	
400.00	0.250	12.170	400.00	1.02	1.08	0.03	1698787.17	14354226.99	39°31'40.5987"N	80°47'34.7845"W	1.09	1.631	0.07	0.06	9.56	
467.00	0.360	19.040	467.00	1.31	1.43	0.13	1698787.27	14354227.34	39°31'40.6021"N	80°47'34.7833"W	1.43	5.222	0.17	0.16	10.25	
502.00	0.640	34.140	502.00	1.51	1.69	0.28	1698787.42	14354227.60	39°31'40.6047"N	80°47'34.7814"W	1.71	9.262	0.88	0.80	43.14	APS EM <12-1/4"> (467')(502'-2668')
592.00	3.100	80.180	591.94	1.43	2.52	2.96	1698790.10	14354228.43	39°31'40.6129"N	80°47'34.7472"W	3.89	49.518	2.99	2.73	51.16	
682.00	6.370	77.630	681.62	0.47	4.01	10.23	1698797.37	14354229.92	39°31'40.6274"N	80°47'34.6543"W	10.99	68.609	3.64	3.63	-2.83	
772.00	8.770	77.150	770.83	-0.82	6.60	21.80	1698808.93	14354232.51	39°31'40.6528"N	80°47'34.5066"W	22.78	73.147	2.67	2.67	-0.53	
861.00	9.160	78.050	858.75	-2.40	9.58	35.35	1698822.47	14354235.49	39°31'40.6819"N	80°47'34.3336"W	36.62	74.835	0.47	0.44	1.01	
951.00	9.050	77.290	947.61	-4.03	12.62	49.26	1698836.38	14354238.53	39°31'40.7116"N	80°47'34.1560"W	50.85	75.630	0.18	-0.12	-0.84	
1041.00	11.820	76.460	1036.12	-5.66	16.34	65.13	1698852.24	14354242.24	39°31'40.7480"N	80°47'33.9533"W	67.15	75.919	3.08	3.08	-0.92	
1136.00	15.910	75.150	1128.33	-7.50	21.95	87.18	1698874.29	14354247.86	39°31'40.8030"N	80°47'33.6717"W	89.91	75.866	4.32	4.31	-1.38	
1231.00	18.850	75.980	1218.98	-9.74	29.01	114.67	1698901.76	14354254.91	39°31'40.8721"N	80°47'33.3208"W	118.28	75.802	3.11	3.09	0.87	
1325.00	21.560	75.450	1307.19	-12.35	37.03	146.12	1698933.20	14354262.93	39°31'40.9507"N	80°47'32.9191"W	150.74	75.779	2.89	2.88	-0.56	
1420.00	21.770	75.500	1395.48	-15.04	45.83	180.07	1698967.14	14354271.72	39°31'41.0368"N	80°47'32.4856"W	185.81	75.722	0.22	0.22	0.05	
1515.00	23.400	79.600	1483.19	-19.19	53.64	215.69	1699002.74	14354279.53	39°31'41.1133"N	80°47'32.0308"W	222.26	76.033	2.38	1.72	4.32	
1609.00	23.440	78.620	1569.45	-24.41	60.70	252.38	1699039.42	14354286.59	39°31'41.1822"N	80°47'31.5624"W	259.57	76.476	0.42	0.04	-1.04	
1704.00	24.140	83.390	1656.39	-31.03	66.67	290.20	1699077.22	14354292.55	39°31'41.2403"N	80°47'31.0795"W	297.76	77.062	2.15	0.74	5.02	
1798.00	24.110	84.280	1742.18	-39.51	70.79	328.40	1699115.41	14354296.68	39°31'41.2802"N	80°47'30.5919"W	335.94	77.835	0.39	-0.03	0.95	
1893.00	23.500	83.700	1829.09	-48.08	74.81	366.53	1699153.53	14354300.69	39°31'41.3190"N	80°47'30.1052"W	374.09	78.465	0.69	-0.64	-0.61	
1987.00	23.230	82.140	1915.39	-55.73	79.40	403.52	1699190.50	14354305.28	39°31'41.3635"N	80°47'29.6329"W	411.26	78.869	0.72	-0.29	-1.66	
2082.00	22.960	82.380	2002.77	-62.96	84.42	440.45	1699227.41	14354310.29	39°31'41.4123"N	80°47'29.1616"W	448.46	79.150	0.30	-0.28	0.25	
2176.00	22.200	82.590	2089.57	-70.09	89.14	476.23	1699263.18	14354315.01	39°31'41.4581"N	80°47'28.7048"W	484.50	79.398	0.81	-0.81	0.22	
2270.00	21.880	81.680	2176.70	-76.86	93.96	511.17	1699298.11	14354319.84	39°31'41.5050"N	80°47'28.2587"W	519.74	79.584	0.50	-0.34	-0.97	
2365.00	21.670	81.780	2264.92	-83.37	99.03	546.05	1699332.97	14354324.90	39°31'41.5543"N	80°47'27.8135"W	554.95	79.720	0.22	-0.22	0.11	
2460.00	21.410	80.330	2353.28	-89.42	104.45	580.50	1699367.41	14354330.32	39°31'41.6071"N	80°47'27.3736"W	589.82	79.800	0.62	-0.27	-1.53	
2554.00	21.070	78.780	2440.90	-94.44	110.62	613.99	1699400.88	14354336.49	39°31'41.6673"N	80°47'26.9461"W	623.87	79.787	0.70	-0.36	-1.65	



Actual Wellpath Report

Axtel Unit 1H AWP Proj: 24045'

Page 3 of 13



REFERENCE WELLPATH IDENTIFICATION

Operator	ANTERO RESOURCES CORPORATION	Well	Axtel Unit 1H
Field	Tyler	API	47-095-02753-0000
Facility	Thin Air Pad	Wellbore	Axtel Unit 1H AWB
Slot	Slot G		

WELLPATH DATA (258 stations)

MD (ft)	Inclination (°)	Azimuth (°)	TVD (ft)	Vert Sect (ft)	North (ft)	East (ft)	Grid East (US ft)	Grid North (US ft)	Latitude	Longitude	Closure Dist (ft)	Closure Dir (°)	DLS (°/100ft)	Build Rate (°/100ft)	Turn Rate (°/100ft)	Comments
2649.00	20.520	78.710	2529.71	-98.94	117.20	647.07	1699433.95	14354343.07	39°31'41.7316"N	80°47'26.5237"W	657.60	79.733	0.58	-0.58	-0.07	
2668.00	20.530	78.660	2547.50	-99.82	118.51	653.60	1699440.48	14354344.37	39°31'41.7444"N	80°47'26.4403"W	664.26	79.723	0.11	0.05	-0.26	
2807.00	21.330	73.150	2677.34	-103.95	130.63	701.70	1699488.56	14354356.49	39°31'41.8631"N	80°47'25.8262"W	713.75	79.454	1.53	0.58	-3.96	APS EM <8-3/4"> (2668')(2807'-5828')
2905.00	20.340	73.370	2768.93	-105.27	140.67	735.07	1699521.92	14354366.53	39°31'41.9615"N	80°47'25.3999"W	748.41	79.166	1.01	-1.01	0.22	
3003.00	19.080	80.640	2861.21	-108.61	148.16	767.20	1699554.04	14354374.01	39°31'42.0347"N	80°47'24.9896"W	781.38	79.070	2.81	-1.29	7.42	
3102.00	18.270	87.920	2955.01	-115.80	151.35	798.68	1699585.50	14354377.20	39°31'42.0656"N	80°47'24.5878"W	812.90	79.270	2.49	-0.82	7.35	
3197.00	18.200	85.210	3045.24	-123.73	153.13	828.35	1699615.16	14354378.98	39°31'42.0825"N	80°47'24.2092"W	842.38	79.526	0.90	-0.07	-2.85	
3293.00	19.470	86.920	3136.09	-131.76	155.24	859.27	1699646.06	14354381.09	39°31'42.1026"N	80°47'23.8146"W	873.18	79.759	1.44	1.32	1.78	
3394.00	21.940	89.620	3230.57	-142.36	156.27	894.95	1699681.73	14354382.12	39°31'42.1120"N	80°47'23.3591"W	908.49	80.095	2.62	2.45	2.67	
3491.00	22.450	85.610	3320.38	-152.77	157.81	931.54	1699718.31	14354383.66	39°31'42.1263"N	80°47'22.8921"W	944.81	80.385	1.65	0.53	-4.13	
3587.00	22.510	81.140	3409.10	-160.58	162.04	967.97	1699754.73	14354387.89	39°31'42.1673"N	80°47'22.4270"W	981.44	80.497	1.78	0.06	-4.66	
3685.00	21.520	84.610	3499.95	-168.06	166.62	1004.41	1699791.15	14354392.46	39°31'42.2118"N	80°47'21.9619"W	1018.13	80.581	1.67	-1.01	3.54	
3782.00	21.050	82.310	3590.34	-175.61	170.62	1039.38	1699826.11	14354396.47	39°31'42.2505"N	80°47'21.5154"W	1053.30	80.678	0.99	-0.48	-2.37	
3879.00	21.030	78.590	3680.87	-181.28	176.40	1073.71	1699860.42	14354402.24	39°31'42.3068"N	80°47'21.0772"W	1088.10	80.670	1.38	-0.02	-3.84	
3976.00	20.530	82.380	3771.57	-186.89	182.10	1107.63	1699894.33	14354407.93	39°31'42.3623"N	80°47'20.6441"W	1122.50	80.664	1.48	-0.52	3.91	
4074.00	20.330	82.360	3863.40	-193.59	186.64	1141.54	1699928.22	14354412.47	39°31'42.4064"N	80°47'20.2113"W	1156.69	80.714	0.20	-0.20	-0.02	
4169.00	21.330	80.520	3952.19	-199.65	191.68	1174.94	1699961.61	14354417.51	39°31'42.4555"N	80°47'19.7849"W	1190.47	80.734	1.26	1.05	-1.94	
4266.00	20.450	77.250	4042.82	-204.36	198.32	1208.87	1699995.52	14354424.16	39°31'42.5203"N	80°47'19.3517"W	1225.03	80.683	1.51	-0.91	-3.37	
4364.00	18.540	80.090	4135.20	-208.64	204.78	1240.91	1700027.56	14354430.61	39°31'42.5835"N	80°47'18.9425"W	1257.70	80.629	2.18	-1.95	2.90	
4461.00	18.110	87.130	4227.29	-215.23	208.19	1271.17	1700057.80	14354434.02	39°31'42.6164"N	80°47'18.5563"W	1288.10	80.699	2.32	-0.44	7.26	
4558.00	20.510	88.730	4318.83	-224.55	209.33	1303.22	1700089.84	14354435.15	39°31'42.6269"N	80°47'18.1473"W	1319.92	80.875	2.53	2.47	1.65	
4657.00	19.240	84.250	4411.94	-233.52	211.34	1336.79	1700123.40	14354437.17	39°31'42.6461"N	80°47'17.7188"W	1353.39	81.016	2.00	-1.28	-4.53	
4755.00	19.960	78.500	4504.27	-239.36	216.30	1369.25	1700155.84	14354442.12	39°31'42.6943"N	80°47'17.3044"W	1386.23	81.023	2.10	0.73	-5.87	
4852.00	19.940	81.080	4595.45	-244.37	222.16	1401.81	1700188.40	14354447.98	39°31'42.7515"N	80°47'16.8886"W	1419.31	80.995	0.91	-0.02	2.66	
4951.00	20.430	86.420	4688.37	-251.88	225.86	1435.74	1700222.31	14354451.68	39°31'42.7872"N	80°47'16.4555"W	1453.40	81.060	1.93	0.49	5.39	
5049.00	18.920	84.380	4780.65	-260.06	228.48	1468.62	1700255.18	14354454.30	39°31'42.8124"N	80°47'16.0358"W	1486.29	81.157	1.69	-1.54	-2.08	
5146.00	19.340	87.950	4872.30	-268.34	230.60	1500.33	1700286.87	14354456.42	39°31'42.8325"N	80°47'15.6311"W	1517.95	81.262	1.28	0.43	3.68	
5243.00	20.000	93.770	4963.65	-279.40	230.08	1532.93	1700319.46	14354455.90	39°31'42.8267"N	80°47'15.2150"W	1550.11	81.464	2.13	0.68	6.00	
5339.00	18.290	95.310	5054.33	-291.91	227.61	1564.32	1700350.83	14354453.43	39°31'42.8015"N	80°47'14.8146"W	1580.79	81.722	1.86	-1.78	1.60	
5437.00	18.320	95.160	5147.37	-304.51	224.80	1594.97	1700381.47	14354450.62	39°31'42.7730"N	80°47'14.4235"W	1610.73	81.977	0.06	0.03	-0.15	



Actual Wellpath Report

Axtel Unit 1H AWP Proj: 24045'

Page 4 of 13



REFERENCE WELLPATH IDENTIFICATION				
Operator	ANTERO RESOURCES CORPORATION		Well	Axtel Unit 1H
Field	Tyler		API	47-095-02753-0000
Facility	Thin Air Pad		Wellbore	Axtel Unit 1H AWB
Slot	Slot G			

WELLPATH DATA (258 stations) † = interpolated, ‡ = extrapolated station																
MD	Inclination	Azimuth	TVD	Vert Sect	North	East	Grid East	Grid North	Latitude	Longitude	Closure Dist	Closure Dir	DLS	Build Rate	Turn Rate	Comments
(ft)	(°)	(°)	(ft)	(ft)	(ft)	(ft)	(US ft)	(US ft)			(ft)	(°)	("/100ft)	("/100ft)	(°/100ft)	
5534.00	21.150	96.200	5238.67	-318.16	221.54	1627.56	1700414.05	14354447.36	39°31'42.7400"N	80°47'14.0077"W	1642.56	82.249	2.94	2.92	1.07	
5632.00	19.600	90.140	5330.54	-331.04	219.59	1661.57	1700448.05	14354445.41	39°31'42.7200"N	80°47'13.5736"W	1676.02	82.472	2.67	-1.58	-6.18	
5729.00	17.850	85.060	5422.41	-339.94	220.83	1692.66	1700479.13	14354446.65	39°31'42.7315"N	80°47'13.1769"W	1707.00	82.567	2.46	-1.80	-5.24	
5828.00	16.430	76.660	5517.03	-344.97	225.37	1721.41	1700507.86	14354451.19	39°31'42.7757"N	80°47'12.8099"W	1736.10	82.541	2.88	-1.43	-8.48	
5871.00	15.660	72.970	5558.35	-345.75	228.47	1732.87	1700519.32	14354454.29	39°31'42.8061"N	80°47'12.6635"W	1747.87	82.489	2.97	-1.79	-8.58	BH AT Curve <8-1/2"> (5828')(5871'-24018')
5967.00	19.780	77.360	5649.78	-347.96	235.82	1761.12	1700547.56	14354461.64	39°31'42.8781"N	80°47'12.3027"W	1776.84	82.373	4.51	4.29	4.57	
6063.00	24.790	82.440	5738.59	-353.70	242.03	1796.95	1700583.38	14354467.84	39°31'42.9386"N	80°47'11.8453"W	1813.18	82.329	5.59	5.22	5.29	
6161.00	24.110	82.520	5827.80	-361.72	247.34	1837.16	1700623.57	14354473.15	39°31'42.9901"N	80°47'11.3319"W	1853.74	82.332	0.69	-0.69	0.08	
6258.00	23.260	82.620	5916.63	-369.48	252.38	1875.80	1700662.20	14354478.19	39°31'43.0390"N	80°47'10.8387"W	1892.70	82.337	0.88	-0.88	0.10	
6356.00	23.120	82.280	6006.71	-377.09	257.45	1914.06	1700700.44	14354483.26	39°31'43.0882"N	80°47'10.3503"W	1931.29	82.339	0.20	-0.14	-0.35	
6453.00	22.050	82.210	6096.27	-384.30	262.47	1950.97	1700737.33	14354488.28	39°31'43.1370"N	80°47'9.8791"W	1968.55	82.338	1.10	-1.10	-0.07	
6549.00	21.500	66.020	6185.51	-386.23	272.08	1984.93	1700771.28	14354497.88	39°31'43.2311"N	80°47'9.4454"W	2003.49	82.195	6.26	-0.57	-16.86	
6648.00	24.720	47.130	6276.68	-376.21	293.57	2016.73	1700803.06	14354519.36	39°31'43.4428"N	80°47'9.0389"W	2037.98	81.718	8.12	3.25	-19.08	
6746.00	28.580	35.030	6364.31	-354.08	326.74	2045.23	1700831.56	14354552.52	39°31'43.7700"N	80°47'8.6742"W	2071.17	80.923	6.78	3.94	-12.35	
6843.00	32.770	24.800	6447.78	-321.41	369.62	2069.59	1700856.91	14354595.38	39°31'44.1932"N	80°47'8.3620"W	2102.34	79.874	6.89	4.32	-10.55	
6940.00	36.840	12.040	6527.52	-277.42	421.98	2086.70	1700873.01	14354647.72	39°31'44.7103"N	80°47'8.1421"W	2128.94	78.568	8.58	4.20	-13.15	
6964.00†	38.408	9.914	6546.52	-264.72	436.36	2089.48	1700875.79	14354662.10	39°31'44.8524"N	80°47'8.1061"W	2134.56	78.204	8.48	6.53	-8.86	Sycamore: 6964' MD
7037.00	43.380	4.270	6601.71	-221.77	483.75	2095.26	1700881.56	14354709.46	39°31'45.3205"N	80°47'8.0310"W	2150.38	77.000	8.48	6.81	-7.73	
7127.00†	47.376	356.044	6664.97	-161.30	547.68	2095.27	1700881.58	14354773.37	39°31'45.9524"N	80°47'8.0288"W	2165.67	75.351	7.87	4.44	-9.14	Middlesex: 7127' MD
7134.00	47.710	355.450	6669.69	-156.30	552.83	2094.89	1700881.20	14354778.52	39°31'46.0033"N	80°47'8.0335"W	2166.61	75.217	7.87	4.77	-8.48	
7233.00	52.300	349.660	6733.34	-82.02	627.94	2084.95	1700871.26	14354853.60	39°31'46.7459"N	80°47'8.1582"W	2177.45	73.239	6.44	4.64	-5.85	
7286.00†	56.012	348.635	6764.37	-39.49	670.12	2076.85	1700863.16	14354895.77	39°31'47.1630"N	80°47'8.2602"W	2182.29	72.117	7.18	7.00	-1.93	Burkett: 7286' MD
7330.00	59.100	347.850	6787.97	-2.66	706.47	2069.28	1700855.60	14354932.10	39°31'47.5224"N	80°47'8.3557"W	2186.56	71.150	7.18	7.02	-1.78	
7342.00†	60.112	347.444	6794.04	7.63	716.58	2067.07	1700853.38	14354942.21	39°31'47.6224"N	80°47'8.3837"W	2187.75	70.880	8.93	8.43	-3.39	Tully: 7342' MD
7379.00	63.240	346.240	6811.60	40.03	748.29	2059.65	1700845.97	14354973.90	39°31'47.9360"N	80°47'8.4774"W	2191.37	70.033	8.93	8.45	-3.25	
7428.00	66.880	345.020	6832.25	84.31	791.32	2048.62	1700834.94	14355016.92	39°31'48.3615"N	80°47'8.6169"W	2196.14	68.880	7.76	7.43	-2.49	
7505.00†	73.534	342.772	6858.32	156.63	860.88	2028.50	1700814.84	14355086.45	39°31'49.0494"N	80°47'8.8714"W	2203.62	67.004	9.07	8.64	-2.92	Marcellus POE: 7505' MD
7527.00	75.440	342.160	6864.20	177.82	881.09	2022.12	1700808.45	14355106.65	39°31'49.2493"N	80°47'8.9523"W	2205.74	66.456	9.07	8.66	-2.78	
7625.00	84.920	340.810	6880.90	274.27	972.55	1991.47	1700777.82	14355198.07	39°31'50.1539"N	80°47'9.3406"W	2216.26	63.971	9.77	9.67	-1.38	
7722.00	91.290	338.640	6884.10	371.13	1063.43	1957.89	1700744.25	14355288.92	39°31'51.0530"N	80°47'9.7664"W	2228.06	61.491	6.94	6.57	-2.24	



Actual Wellpath Report

Axtel Unit 1H AWP Proj: 24045'
Page 5 of 13



REFERENCE WELLPATH IDENTIFICATION			
Operator	ANTERO RESOURCES CORPORATION	Well	Axtel Unit 1H
Field	Tyler	API	47-095-02753-0000
Facility	Thin Air Pad	Wellbore	Axtel Unit 1H AWB
Slot	Slot G		

WELLPATH DATA (258 stations)																
MD [ft]	Inclination [°]	Azimuth [°]	TVD [ft]	Vert Sect [ft]	North [ft]	East [ft]	Grid East [US ft]	Grid North [US ft]	Latitude	Longitude	Closure Dist [ft]	Closure Dir [°]	DLS [°/100ft]	Build Rate [°/100ft]	Turn Rate [°/100ft]	Comments
7818.00	89.940	336.800	6883.07	466.95	1152.19	1921.35	1700707.72	14355377.64	39°31'51.9310"N	80°47'10.2302"W	2240.34	59.050	2.55	-1.41	-2.12	
7913.00	90.370	336.990	6882.82	561.68	1239.50	1883.92	1700670.31	14355464.92	39°31'52.7949"N	80°47'10.7052"W	2255.11	56.657	0.61	0.45	0.41	
8012.00	89.720	338.990	6882.74	660.53	1331.28	1846.82	1700633.22	14355556.66	39°31'53.7028"N	80°47'11.1759"W	2276.63	54.214	2.12	-0.66	2.02	
8110.00	90.400	340.820	6882.64	758.51	1423.31	1813.15	1700599.56	14355648.66	39°31'54.6132"N	80°47'11.6029"W	2305.06	51.868	1.99	0.69	1.87	
8207.00	90.650	340.280	6881.75	855.50	1514.77	1780.85	1700567.28	14355740.08	39°31'55.5178"N	80°47'12.0123"W	2337.94	49.616	0.61	0.26	-0.56	
8304.00	89.880	339.060	6881.30	952.46	1605.73	1747.15	1700533.59	14355831.00	39°31'56.4176"N	80°47'12.4396"W	2372.95	47.415	1.49	-0.79	-1.26	
8403.00	90.250	341.270	6881.19	1051.44	1698.85	1713.56	1700500.02	14355924.08	39°31'57.3387"N	80°47'12.8655"W	2412.96	45.247	2.26	0.37	2.23	
8501.00	89.850	339.670	6881.10	1149.44	1791.21	1680.80	1700467.27	14356016.40	39°31'58.2522"N	80°47'13.2808"W	2456.32	43.179	1.68	-0.41	-1.63	
8598.00	89.880	340.610	6881.33	1246.42	1882.44	1647.85	1700434.33	14356107.60	39°31'59.1547"N	80°47'13.6986"W	2501.79	41.198	0.97	0.03	0.97	
8696.00	89.780	341.130	6881.62	1344.42	1975.02	1615.73	1700402.23	14356200.15	39°32'0.0705"N	80°47'14.1057"W	2551.73	39.286	0.54	-0.10	0.53	
8794.00	90.220	339.540	6881.62	1442.41	2067.30	1582.75	1700369.26	14356292.39	39°32'0.9833"N	80°47'14.5238"W	2603.62	37.438	1.68	0.45	-1.62	
8891.00	90.060	340.730	6881.38	1539.39	2158.53	1549.79	1700336.32	14356383.58	39°32'1.8857"N	80°47'14.9418"W	2657.27	35.678	1.24	-0.16	1.23	
8989.00	90.490	341.080	6880.91	1637.39	2251.14	1517.73	1700304.27	14356476.15	39°32'2.8017"N	80°47'15.3481"W	2714.98	33.988	0.57	0.44	0.36	
9085.00	90.550	341.070	6880.04	1733.39	2341.94	1486.60	1700273.15	14356566.92	39°32'3.6999"N	80°47'15.7428"W	2773.93	32.406	0.06	0.06	-0.01	
9182.00	90.250	340.310	6879.36	1830.38	2433.48	1454.52	1700241.09	14356658.42	39°32'4.6053"N	80°47'16.1494"W	2835.05	30.867	0.84	-0.31	-0.78	
9280.00	91.050	340.500	6878.25	1928.37	2525.80	1421.66	1700208.23	14356750.71	39°32'5.5185"N	80°47'16.5661"W	2898.41	29.373	0.84	0.82	0.19	
9377.00	90.120	341.000	6877.26	2025.36	2617.37	1389.68	1700176.27	14356842.24	39°32'6.4243"N	80°47'16.9714"W	2963.42	27.966	1.09	-0.96	0.52	
9476.00	91.140	341.150	6876.17	2124.35	2711.01	1357.58	1700144.18	14356935.84	39°32'7.3505"N	80°47'17.3784"W	3031.93	26.600	1.04	1.03	0.15	
9572.00	89.820	339.240	6875.37	2220.33	2801.33	1325.05	1700111.67	14357026.12	39°32'8.2438"N	80°47'17.7908"W	3098.90	25.315	2.42	-1.38	-1.99	
9670.00	89.880	340.480	6875.63	2318.31	2893.33	1291.31	1700077.94	14357118.09	39°32'9.1539"N	80°47'18.2187"W	3168.41	24.051	1.27	0.06	1.27	
9768.00	90.030	340.960	6875.70	2416.30	2985.83	1258.95	1700045.59	14357210.56	39°32'10.0689"N	80°47'18.6289"W	3240.40	22.862	0.51	0.15	0.49	
9865.00	90.120	340.710	6875.58	2513.30	3077.46	1227.11	1700013.76	14357302.14	39°32'10.9752"N	80°47'19.0326"W	3313.09	21.739	0.27	0.09	-0.26	
9963.00	89.320	340.930	6876.05	2611.30	3170.02	1194.91	1699981.58	14357394.66	39°32'11.8907"N	80°47'19.4408"W	3387.75	20.654	0.85	-0.82	0.22	
10060.00	90.090	341.140	6876.55	2708.30	3261.75	1163.39	1699950.07	14357486.36	39°32'12.7981"N	80°47'19.8404"W	3463.02	19.630	0.82	0.79	0.22	
10159.00	89.910	340.940	6876.55	2807.30	3355.38	1131.22	1699917.91	14357579.95	39°32'13.7242"N	80°47'20.2481"W	3540.94	18.631	0.27	-0.18	-0.20	
10257.00	89.910	341.110	6876.71	2905.30	3448.05	1099.36	1699886.06	14357672.59	39°32'14.6408"N	80°47'20.6520"W	3619.07	17.684	0.17	0.00	0.17	
10355.00	90.800	341.430	6876.10	3003.29	3540.86	1067.89	1699854.61	14357765.36	39°32'15.5588"N	80°47'21.0509"W	3698.39	16.783	0.97	0.91	0.33	
10452.00	89.850	340.410	6875.55	3100.29	3632.53	1036.18	1699822.91	14357856.99	39°32'16.4655"N	80°47'21.4529"W	3777.42	15.921	1.44	-0.98	-1.05	
10549.00	90.400	341.540	6875.34	3197.29	3724.23	1004.56	1699791.30	14357948.65	39°32'17.3725"N	80°47'21.8537"W	3857.33	15.096	1.30	0.57	1.16	
10645.00	90.220	340.180	6874.82	3293.28	3814.92	973.09	1699759.84	14358039.31	39°32'18.2696"N	80°47'22.2527"W	3937.07	14.310	1.43	-0.19	-1.42	



Actual Wellpath Report

Axtel Unit 1H AWP Proj: 24045'

Page 6 of 13



REFERENCE WELLPATH IDENTIFICATION			
Operator	ANTERO RESOURCES CORPORATION	Well	Axtel Unit 1H
Field	Tyler	API	47-095-02753-0000
Facility	Thin Air Pad	Wellbore	Axtel Unit 1H AWB
Slot	Slot G		

WELLPATH DATA (258 stations)																
MD (ft)	Inclination (°)	Azimuth (°)	TVD (ft)	Vert Sect (ft)	North (ft)	East (ft)	Grid East (US ft)	Grid North (US ft)	Latitude	Longitude	Closure Dist (ft)	Closure Dir (°)	DLS (°/100ft)	Build Rate (°/100ft)	Turn Rate (°/100ft)	Comments
10743.00	90.620	340.890	6874.10	3391.28	3907.31	940.43	1699727.20	14358131.67	39°32'19.1835"N	80°47'22.6668"W	4018.89	13.533	0.83	0.41	0.72	
10840.00	90.740	341.060	6872.95	3488.27	3999.01	908.82	1699695.59	14358223.32	39°32'20.0905"N	80°47'23.0676"W	4100.98	12.804	0.21	0.12	0.18	
10939.00	89.510	340.230	6872.73	3587.26	4092.41	876.01	1699662.80	14358316.69	39°32'21.0144"N	80°47'23.4836"W	4185.12	12.082	1.50	-1.24	-0.84	
11037.00	90.030	340.100	6873.13	3685.25	4184.59	842.75	1699629.56	14358408.84	39°32'21.9262"N	80°47'23.9053"W	4268.61	11.387	0.55	0.53	-0.13	
11135.00	90.090	340.920	6873.02	3783.24	4276.98	810.06	1699596.87	14358501.18	39°32'22.8400"N	80°47'24.3199"W	4353.01	10.725	0.84	0.06	0.84	
11231.00	91.540	341.010	6871.66	3879.23	4367.72	778.75	1699565.58	14358591.89	39°32'23.7375"N	80°47'24.7168"W	4436.60	10.109	1.51	1.51	0.09	
11328.00	89.450	339.540	6870.82	3976.21	4459.01	746.02	1699532.86	14358683.15	39°32'24.6406"N	80°47'25.1319"W	4520.99	9.498	2.63	-2.15	-1.52	
11426.00	90.680	341.010	6870.71	4074.19	4551.26	712.94	1699499.80	14358775.36	39°32'25.5531"N	80°47'25.5513"W	4606.76	8.903	1.96	1.26	1.50	
11523.00	90.180	339.930	6869.98	4171.18	4642.67	680.52	1699467.39	14358866.74	39°32'26.4573"N	80°47'25.9625"W	4692.28	8.339	1.23	-0.52	-1.11	
11622.00	91.050	341.350	6868.92	4270.17	4736.07	647.70	1699434.58	14358960.09	39°32'27.3811"N	80°47'26.3785"W	4780.15	7.787	1.68	0.88	1.43	
11719.00	90.090	341.040	6867.95	4367.17	4827.88	616.44	1699403.33	14359051.87	39°32'28.2892"N	80°47'26.7749"W	4867.08	7.276	1.04	-0.99	-0.32	
11816.00	91.380	341.350	6866.71	4464.16	4919.70	585.17	1699372.08	14359143.65	39°32'29.1974"N	80°47'27.1713"W	4954.38	6.783	1.37	1.33	0.32	
11915.00	89.910	340.290	6865.60	4563.14	5013.19	552.65	1699339.57	14359237.11	39°32'30.1221"N	80°47'27.5836"W	5043.56	6.291	1.83	-1.48	-1.07	
12012.00	90.120	340.180	6865.57	4660.13	5104.48	519.85	1699306.78	14359328.35	39°32'31.0251"N	80°47'27.9996"W	5130.88	5.815	0.24	0.22	-0.11	
12109.00	90.400	341.150	6865.13	4757.13	5196.00	487.73	1699274.68	14359419.85	39°32'31.9304"N	80°47'28.4068"W	5218.84	5.362	1.04	0.29	1.00	
12206.00	90.080	341.940	6864.74	4854.12	5288.01	457.03	1699243.98	14359511.82	39°32'32.8405"N	80°47'28.7960"W	5307.73	4.940	0.89	-0.35	0.81	
12305.00	89.910	341.290	6864.77	4953.12	5381.96	425.80	1699212.77	14359605.73	39°32'33.7697"N	80°47'29.1918"W	5398.78	4.524	0.67	-0.15	-0.66	
12402.00	90.520	342.330	6864.40	5050.11	5474.11	395.52	1699182.51	14359697.84	39°32'34.6811"N	80°47'29.5756"W	5488.38	4.133	1.24	0.63	1.07	
12499.00	90.400	341.920	6863.62	5147.09	5566.42	365.75	1699152.74	14359790.12	39°32'35.5942"N	80°47'29.9529"W	5578.43	3.759	0.44	-0.12	-0.42	
12596.00	90.310	342.110	6863.02	5244.07	5658.68	335.80	1699122.81	14359882.34	39°32'36.5067"N	80°47'30.3325"W	5668.64	3.396	0.22	-0.09	0.20	
12694.00	90.650	342.630	6862.20	5342.05	5752.08	306.12	1699093.14	14359975.70	39°32'37.4304"N	80°47'30.7086"W	5760.22	3.046	0.63	0.35	0.53	
12792.00	89.820	340.950	6861.80	5440.03	5845.16	275.50	1699062.53	14360068.75	39°32'38.3511"N	80°47'31.0967"W	5851.65	2.698	1.91	-0.85	-1.71	
12891.00	90.250	342.030	6861.74	5539.03	5939.04	244.07	1699031.11	14360162.59	39°32'39.2796"N	80°47'31.4951"W	5944.05	2.353	1.17	0.43	1.09	
12989.00	90.400	342.050	6861.18	5637.01	6032.26	213.85	1699000.90	14360255.77	39°32'40.2016"N	80°47'31.8781"W	6036.05	2.030	0.15	0.15	0.02	
13087.00	90.250	340.650	6860.63	5735.01	6125.11	182.51	1698969.58	14360348.59	39°32'41.1200"N	80°47'32.2754"W	6127.83	1.707	1.44	-0.15	-1.43	
13186.00	89.970	340.340	6860.44	5834.00	6218.43	149.46	1698936.54	14360441.87	39°32'42.0431"N	80°47'32.6946"W	6220.23	1.377	0.42	-0.28	-0.31	
13284.00	90.090	340.150	6860.39	5931.99	6310.66	116.33	1698903.43	14360534.06	39°32'42.9554"N	80°47'33.1147"W	6311.74	1.056	0.23	0.12	-0.19	
13383.00	90.150	341.510	6860.18	6030.99	6404.17	83.83	1698870.93	14360627.53	39°32'43.8803"N	80°47'33.5269"W	6404.72	0.750	1.38	0.06	1.37	
13481.00	90.740	342.310	6859.42	6128.97	6497.32	53.40	1698840.52	14360720.65	39°32'44.8016"N	80°47'33.9126"W	6497.54	0.471	1.01	0.60	0.82	
13579.00	90.340	341.650	6858.49	6226.96	6590.51	23.08	1698810.21	14360813.80	39°32'45.7233"N	80°47'34.2968"W	6590.55	0.201	0.79	-0.41	-0.67	



Actual Wellpath Report

Axtel Unit 1H AWP Proj: 24045'

Page 7 of 13



REFERENCE WELLPATH IDENTIFICATION			
Operator	ANTERO RESOURCES CORPORATION	Well	Axtel Unit 1H
Field	Tyler	API	47-095-02753-0000
Facility	Thin Air Pad	Wellbore	Axtel Unit 1H AWB
Slot	Slot G		

WELLPATH DATA (258 stations)																
MD (ft)	Inclination (°)	Azimuth (°)	TVD (ft)	Vert Sect (ft)	North (ft)	East (ft)	Grid East (US ft)	Grid North (US ft)	Latitude	Longitude	Closure Dist (ft)	Closure Dir (°)	DLS (°/100ft)	Build Rate (°/100ft)	Turn Rate (°/100ft)	Comments
13677.00	90.250	342.090	6857.99	6324.95	6683.65	-7.41	1698779.73	14360906.89	39°32'46.6445"N	80°47'34.6834"W	6683.65	359.936	0.46	-0.09	0.45	
13776.00	90.890	342.030	6857.00	6423.93	6777.83	-37.91	1698749.25	14361001.04	39°32'47.5760"N	80°47'35.0698"W	6777.93	359.680	0.65	0.65	-0.06	
13873.00	90.620	342.030	6855.73	6520.90	6870.09	-67.83	1698719.34	14361093.26	39°32'48.4885"N	80°47'35.4491"W	6870.42	359.434	0.28	-0.28	0.00	
13971.00	90.250	342.120	6854.98	6618.89	6963.33	-97.99	1698689.19	14361186.47	39°32'49.4107"N	80°47'35.8314"W	6964.02	359.194	0.39	-0.38	0.09	
14070.00	90.620	341.850	6854.23	6717.87	7057.47	-128.61	1698658.59	14361280.57	39°32'50.3418"N	80°47'36.2195"W	7058.64	358.956	0.46	0.37	-0.27	
14165.00	90.490	342.530	6853.31	6812.85	7147.91	-157.66	1698629.54	14361370.98	39°32'51.2363"N	80°47'36.5877"W	7149.65	358.736	0.73	-0.14	0.72	
14264.00	89.940	342.910	6852.94	6911.81	7242.44	-187.07	1698600.15	14361465.47	39°32'52.1713"N	80°47'36.9603"W	7244.86	358.520	0.68	-0.56	0.38	
14362.00	90.460	342.700	6852.60	7009.76	7336.06	-216.04	1698571.19	14361559.05	39°32'53.0972"N	80°47'37.3274"W	7339.24	358.313	0.57	0.53	-0.21	
14459.00	90.650	342.500	6851.66	7106.72	7428.62	-245.04	1698542.19	14361651.57	39°32'54.0126"N	80°47'37.6950"W	7432.66	358.111	0.28	0.20	-0.21	
14557.00	89.850	342.720	6851.23	7204.69	7522.14	-274.33	1698512.92	14361745.05	39°32'54.9375"N	80°47'38.0662"W	7527.14	357.911	0.85	-0.82	0.22	
14655.00	90.680	342.780	6850.78	7302.64	7615.73	-303.39	1698483.87	14361838.61	39°32'55.8632"N	80°47'38.4344"W	7621.77	357.719	0.85	0.85	0.06	
14752.00	90.030	343.750	6850.17	7399.57	7708.62	-331.32	1698455.95	14361931.46	39°32'56.7819"N	80°47'38.7882"W	7715.73	357.539	1.20	-0.67	1.00	
14849.00	90.860	342.560	6849.42	7496.50	7801.45	-359.43	1698427.85	14362024.25	39°32'57.7000"N	80°47'39.1443"W	7809.73	357.362	1.50	0.86	-1.23	
14947.00	90.400	341.240	6848.34	7594.48	7894.59	-389.87	1698397.42	14362117.36	39°32'58.6212"N	80°47'39.5302"W	7904.21	357.173	1.43	-0.47	-1.35	
15046.00	90.800	341.390	6847.31	7693.47	7988.37	-421.59	1698365.72	14362211.10	39°32'59.5488"N	80°47'39.9324"W	7999.49	356.979	0.43	0.40	0.15	
15142.00	90.770	341.450	6845.99	7789.46	8079.36	-452.17	1698335.15	14362302.05	39°33'0.4487"N	80°47'40.3202"W	8092.00	356.797	0.07	-0.03	0.06	
15238.00	90.860	340.430	6844.63	7885.45	8170.08	-483.52	1698303.81	14362392.74	39°33'1.3461"N	80°47'40.7177"W	8184.38	356.613	1.07	0.09	-1.06	
15335.00	88.580	338.510	6845.10	7982.40	8260.91	-517.53	1698269.81	14362483.53	39°33'2.2445"N	80°47'41.1492"W	8277.11	356.415	3.07	-2.35	-1.98	
15431.00	90.920	340.430	6845.52	8078.35	8350.80	-551.20	1698236.16	14362573.39	39°33'3.1337"N	80°47'41.5764"W	8368.97	356.224	3.15	2.44	2.00	
15527.00	90.460	339.800	6844.36	8174.33	8441.07	-583.85	1698203.53	14362663.62	39°33'4.0266"N	80°47'41.9906"W	8461.24	356.043	0.81	-0.48	-0.66	
15624.00	90.370	340.100	6843.66	8271.31	8532.19	-617.10	1698170.28	14362754.70	39°33'4.9279"N	80°47'42.4124"W	8554.48	355.863	0.32	-0.09	0.31	
15721.00	91.140	341.000	6842.38	8368.30	8623.65	-649.40	1698138.00	14362846.12	39°33'5.8325"N	80°47'42.8221"W	8648.06	355.694	1.22	0.79	0.93	
15819.00	90.490	339.980	6840.99	8466.28	8716.01	-682.12	1698105.29	14362938.45	39°33'6.7461"N	80°47'43.2372"W	8742.66	355.525	1.23	-0.66	-1.04	
15917.00	90.650	339.890	6840.01	8564.25	8808.06	-715.74	1698071.68	14363030.46	39°33'7.6565"N	80°47'43.6637"W	8837.09	355.354	0.19	0.16	-0.09	
16014.00	90.490	340.240	6839.05	8661.23	8899.24	-748.81	1698038.62	14363121.61	39°33'8.5585"N	80°47'44.0833"W	8930.69	355.190	0.40	-0.16	0.36	
16110.00	90.490	340.520	6838.23	8757.22	8989.66	-781.05	1698006.40	14363211.99	39°33'9.4529"N	80°47'44.4921"W	9023.53	355.034	0.29	0.00	0.29	
16207.00	90.250	339.680	6837.60	8854.21	9080.87	-814.06	1697973.40	14363303.16	39°33'10.3550"N	80°47'44.9110"W	9117.28	354.877	0.90	-0.25	-0.87	
16304.00	90.460	340.400	6837.00	8951.19	9172.04	-847.18	1697940.30	14363394.30	39°33'11.2568"N	80°47'45.3311"W	9211.08	354.723	0.77	0.22	0.74	
16403.00	90.280	339.950	6836.36	9050.17	9265.17	-880.75	1697906.74	14363487.39	39°33'12.1780"N	80°47'45.7570"W	9306.94	354.570	0.49	-0.18	-0.45	
16501.00	90.280	339.720	6835.88	9148.15	9357.16	-914.53	1697872.97	14363579.34	39°33'13.0879"N	80°47'46.1856"W	9401.74	354.418	0.23	0.00	-0.23	



Actual Wellpath Report

Axtel Unit 1H AWP Proj: 24045'

Page 8 of 13



REFERENCE WELLPATH IDENTIFICATION			
Operator	ANTERO RESOURCES CORPORATION	Well	Axtel Unit 1H
Field	Tyler	API	47-095-02753-0000
Facility	Thin Air Pad	Wellbore	Axtel Unit 1H AWB
Slot	Slot G		

WELLPATH DATA (258 stations)																
MD (ft)	Inclination (°)	Azimuth (°)	TVD (ft)	Vert Sect (ft)	North (ft)	East (ft)	Grid East (US ft)	Grid North (US ft)	Latitude	Longitude	Closure Dist (ft)	Closure Dir (°)	DLS (°/100ft)	Build Rate (°/100ft)	Turn Rate (°/100ft)	Comments
16599.00	90.310	340.360	6835.38	9246.13	9449.27	-947.99	1697839.53	14363671.42	39°33'13.9990"N	80°47'46.6100"W	9496.70	354.271	0.65	0.03	0.65	
16697.00	89.540	340.160	6835.51	9344.12	9541.51	-981.09	1697806.45	14363763.62	39°33'14.9114"N	80°47'47.0299"W	9591.82	354.129	0.81	-0.79	-0.20	
16795.00	90.030	340.970	6835.87	9442.11	9633.93	-1013.69	1697773.85	14363856.00	39°33'15.8255"N	80°47'47.4436"W	9687.11	353.993	0.97	0.50	0.83	
16893.00	90.250	340.450	6835.63	9540.11	9726.42	-1046.07	1697741.49	14363948.46	39°33'16.7404"N	80°47'47.8542"W	9782.51	353.861	0.58	0.22	-0.53	
16990.00	88.830	340.620	6836.41	9637.10	9817.87	-1078.39	1697709.18	14364039.87	39°33'17.6449"N	80°47'48.2642"W	9876.92	353.732	1.47	-1.46	0.18	
17087.00	89.350	340.150	6837.95	9734.08	9909.23	-1110.95	1697676.64	14364131.20	39°33'18.5486"N	80°47'48.6772"W	9971.31	353.603	0.72	0.54	-0.48	
17186.00	89.480	339.830	6838.96	9833.06	10002.25	-1144.82	1697642.77	14364224.18	39°33'19.4687"N	80°47'49.1070"W	10067.55	353.471	0.35	0.13	-0.32	
17283.00	89.630	340.020	6839.72	9930.03	10093.35	-1178.12	1697609.49	14364315.25	39°33'20.3698"N	80°47'49.5295"W	10161.88	353.342	0.25	0.15	0.20	
17380.00	89.380	339.920	6840.56	10027.01	10184.48	-1211.34	1697576.28	14364406.34	39°33'21.2712"N	80°47'49.9510"W	10256.27	353.217	0.28	-0.26	-0.10	
17476.00	89.540	341.290	6841.46	10123.00	10275.03	-1243.22	1697544.42	14364496.85	39°33'22.1668"N	80°47'50.3554"W	10349.97	353.101	1.44	0.17	1.43	
17573.00	89.200	340.990	6842.53	10220.00	10366.82	-1274.57	1697513.08	14364588.60	39°33'23.0747"N	80°47'50.7530"W	10444.87	352.991	0.47	-0.35	-0.31	
17671.00	89.630	341.120	6843.53	10317.99	10459.50	-1306.38	1697481.28	14364681.25	39°33'23.9914"N	80°47'51.1565"W	10540.77	352.881	0.46	0.44	0.13	
17768.00	89.110	340.810	6844.59	10414.98	10551.19	-1338.02	1697449.65	14364772.90	39°33'24.8983"N	80°47'51.5578"W	10635.69	352.773	0.62	-0.54	-0.32	
17867.00	89.850	341.390	6845.49	10513.98	10644.85	-1370.08	1697417.60	14364866.52	39°33'25.8247"N	80°47'51.9645"W	10732.66	352.666	0.95	0.75	0.59	
17964.00	89.380	340.880	6846.14	10610.98	10736.64	-1401.45	1697386.25	14364958.27	39°33'26.7325"N	80°47'52.3623"W	10827.72	352.563	0.71	-0.48	-0.53	
18061.00	90.400	340.800	6846.33	10707.97	10828.26	-1433.28	1697354.43	14365049.86	39°33'27.6388"N	80°47'52.7661"W	10922.71	352.460	1.05	1.05	-0.08	
18159.00	90.490	340.980	6845.57	10805.97	10920.86	-1465.37	1697322.36	14365142.42	39°33'28.5546"N	80°47'53.1730"W	11018.73	352.358	0.21	0.09	0.18	
18255.00	90.430	340.810	6844.80	10901.97	11011.57	-1496.79	1697290.95	14365233.09	39°33'29.4518"N	80°47'53.5716"W	11112.83	352.259	0.19	-0.06	-0.18	
18352.00	90.090	340.760	6844.36	10998.96	11103.16	-1528.71	1697259.04	14365324.65	39°33'30.3578"N	80°47'53.9766"W	11207.91	352.161	0.35	-0.35	-0.05	
18450.00	89.780	340.980	6844.47	11096.96	11195.75	-1560.82	1697226.94	14365417.20	39°33'31.2736"N	80°47'54.3839"W	11304.03	352.063	0.39	-0.32	0.22	
18547.00	90.430	341.040	6844.29	11193.96	11287.47	-1592.39	1697195.39	14365508.89	39°33'32.1808"N	80°47'54.7843"W	11399.24	351.970	0.67	0.67	0.06	
18645.00	90.430	342.000	6843.56	11291.96	11380.41	-1623.45	1697164.34	14365601.79	39°33'33.1000"N	80°47'55.1782"W	11495.63	351.881	0.98	0.00	0.98	
18742.00	89.750	341.060	6843.40	11388.95	11472.42	-1654.18	1697133.62	14365693.76	39°33'34.0100"N	80°47'55.5680"W	11591.06	351.795	1.20	-0.70	-0.97	
18841.00	90.770	340.840	6842.95	11487.95	11565.99	-1686.49	1697101.32	14365787.30	39°33'34.9355"N	80°47'55.9778"W	11688.30	351.704	1.05	1.03	-0.22	
18938.00	90.250	341.150	6842.09	11584.94	11657.70	-1718.08	1697069.74	14365878.97	39°33'35.8426"N	80°47'56.3785"W	11783.62	351.616	0.62	-0.54	0.32	
19034.00	90.340	340.810	6841.60	11680.94	11748.46	-1749.37	1697038.47	14365969.69	39°33'36.7403"N	80°47'56.7754"W	11877.99	351.531	0.37	0.09	-0.35	
19132.00	90.400	340.680	6840.96	11778.94	11840.97	-1781.68	1697006.17	14366062.17	39°33'37.6553"N	80°47'57.1853"W	11974.27	351.443	0.15	0.06	-0.13	
19231.00	90.580	341.540	6840.12	11877.93	11934.64	-1813.73	1696974.13	14366155.80	39°33'38.5817"N	80°47'57.5919"W	12071.67	351.359	0.89	0.18	0.87	
19329.00	90.060	340.980	6839.57	11975.93	12027.44	-1845.22	1696942.66	14366248.56	39°33'39.4996"N	80°47'57.9912"W	12168.16	351.278	0.78	-0.53	-0.57	
19427.00	90.520	341.120	6839.07	12073.93	12120.13	-1877.04	1696910.85	14366341.21	39°33'40.4164"N	80°47'58.3949"W	12264.61	351.197	0.49	0.47	0.14	



Actual Wellpath Report

Axtel Unit 1H AWP Proj: 24045'

Page 9 of 13



REFERENCE WELLPATH IDENTIFICATION				
Operator	ANTERO RESOURCES CORPORATION		Well	Axtel Unit 1H
Field	Tyler		API	47-095-02753-0000
Facility	Thin Air Pad		Wellbore	Axtel Unit 1H AWB
Slot	Slot G			

WELLPATH DATA (258 stations)																
MD (ft)	Inclination (°)	Azimuth (°)	TVD (ft)	Vert Sect (ft)	North (ft)	East (ft)	Grid East (US ft)	Grid North (US ft)	Latitude	Longitude	Closure Dist (ft)	Closure Dir (°)	DLS (°/100ft)	Build Rate (°/100ft)	Turn Rate (°/100ft)	Comments
19526.00	90.250	340.830	6838.41	12172.93	12213.72	-1909.31	1696878.59	14366434.77	39°33'41.3421"N	80°47'58.8043"W	12362.05	351.115	0.40	-0.27	-0.29	
19623.00	90.400	340.790	6837.86	12269.93	12305.33	-1941.20	1696846.72	14366526.34	39°33'42.2481"N	80°47'59.2088"W	12457.50	351.035	0.16	0.15	-0.04	
19722.00	90.310	340.780	6837.25	12368.92	12398.81	-1973.78	1696814.15	14366619.78	39°33'43.1728"N	80°47'59.6221"W	12554.93	350.955	0.09	-0.09	-0.01	
19819.00	90.430	341.280	6836.62	12465.92	12490.54	-2005.31	1696782.63	14366711.48	39°33'44.0801"N	80°48'0.0221"W	12650.49	350.879	0.53	0.12	0.52	
19917.00	90.460	341.390	6835.86	12563.92	12583.38	-2036.67	1696751.28	14366804.28	39°33'44.9983"N	80°48'0.4199"W	12747.14	350.806	0.12	0.03	0.11	
20013.00	89.850	340.920	6835.60	12659.91	12674.23	-2067.68	1696720.28	14366895.10	39°33'45.8969"N	80°48'0.8133"W	12841.79	350.734	0.80	-0.64	-0.49	
20110.00	90.310	341.210	6835.46	12756.91	12765.99	-2099.16	1696688.82	14366986.81	39°33'46.8044"N	80°48'1.2126"W	12937.42	350.662	0.56	0.47	0.30	
20207.00	90.400	340.970	6834.86	12853.91	12857.75	-2130.59	1696657.40	14367078.54	39°33'47.7120"N	80°48'1.6113"W	13033.08	350.591	0.26	0.09	-0.25	
20306.00	90.520	341.010	6834.07	12952.91	12951.35	-2162.84	1696625.16	14367172.10	39°33'48.6378"N	80°48'2.0204"W	13130.70	350.519	0.13	0.12	0.04	
20403.00	90.120	341.290	6833.53	13049.91	13043.14	-2194.18	1696593.84	14367263.86	39°33'49.5457"N	80°48'2.4180"W	13226.41	350.451	0.50	-0.41	0.29	
20500.00	90.120	340.850	6833.32	13146.91	13134.90	-2225.64	1696562.38	14367355.58	39°33'50.4532"N	80°48'2.8172"W	13322.12	350.383	0.45	0.00	-0.45	
20599.00	90.460	341.010	6832.82	13245.90	13228.46	-2257.99	1696530.05	14367449.10	39°33'51.3787"N	80°48'3.2275"W	13419.79	350.313	0.38	0.34	0.16	
20697.00	90.120	341.340	6832.32	13343.90	13321.22	-2289.61	1696498.44	14367541.82	39°33'52.2961"N	80°48'3.6287"W	13516.55	350.247	0.48	-0.35	0.34	
20795.00	90.180	340.970	6832.07	13441.90	13413.96	-2321.27	1696466.80	14367634.53	39°33'53.2134"N	80°48'4.0302"W	13613.33	350.182	0.38	0.06	-0.38	
20894.00	90.280	341.000	6831.67	13540.90	13507.56	-2353.52	1696434.55	14367728.09	39°33'54.1391"N	80°48'4.4395"W	13711.06	350.116	0.11	0.10	0.03	
20992.00	89.820	340.630	6831.59	13638.90	13600.12	-2385.73	1696402.36	14367820.61	39°33'55.0546"N	80°48'4.8481"W	13807.78	350.050	0.60	-0.47	-0.38	
21089.00	89.750	341.380	6831.95	13735.90	13691.83	-2417.30	1696370.80	14367912.29	39°33'55.9618"N	80°48'5.2486"W	13903.58	349.988	0.78	-0.07	0.77	
21187.00	90.180	340.890	6832.01	13833.90	13784.57	-2448.99	1696339.13	14368004.99	39°33'56.8790"N	80°48'5.6506"W	14000.42	349.926	0.67	0.44	-0.50	
21286.00	90.460	341.270	6831.46	13932.90	13878.22	-2481.09	1696307.04	14368098.60	39°33'57.8052"N	80°48'6.0578"W	14098.25	349.864	0.48	0.28	0.38	
21383.00	90.220	340.920	6830.88	14029.89	13969.98	-2512.51	1696275.63	14368190.33	39°33'58.7129"N	80°48'6.4565"W	14194.13	349.804	0.44	-0.25	-0.36	
21481.00	90.250	341.010	6830.48	14127.89	14062.63	-2544.47	1696243.68	14368282.94	39°33'59.6291"N	80°48'6.8621"W	14290.97	349.744	0.10	0.03	0.09	
21578.00	90.150	340.740	6830.14	14224.89	14154.27	-2576.25	1696211.91	14368374.55	39°34'0.5356"N	80°48'7.2653"W	14386.82	349.684	0.30	-0.10	-0.28	
21676.00	90.280	340.900	6829.77	14322.89	14246.83	-2608.45	1696179.73	14368467.07	39°34'1.4511"N	80°48'7.6738"W	14483.65	349.625	0.21	0.13	0.16	
21772.00	90.220	341.020	6829.35	14418.89	14337.58	-2639.77	1696148.42	14368557.78	39°34'2.3486"N	80°48'8.0711"W	14578.56	349.568	0.14	-0.06	0.13	
21870.00	90.150	340.730	6829.04	14516.89	14430.17	-2671.88	1696116.33	14368650.33	39°34'3.2644"N	80°48'8.4785"W	14675.44	349.510	0.30	-0.07	-0.30	
21967.00	90.090	340.760	6828.83	14613.89	14521.74	-2703.86	1696084.35	14368741.87	39°34'4.1701"N	80°48'8.8844"W	14771.32	349.453	0.07	-0.06	0.03	
22064.00	90.250	340.960	6828.55	14710.88	14613.38	-2735.67	1696052.56	14368833.47	39°34'5.0765"N	80°48'9.2879"W	14867.24	349.397	0.26	0.16	0.21	
22161.00	90.220	340.930	6828.15	14807.88	14705.06	-2767.34	1696020.91	14368925.12	39°34'5.9833"N	80°48'9.6898"W	14963.19	349.342	0.04	-0.03	-0.03	
22259.00	90.220	341.040	6827.77	14905.88	14797.71	-2799.27	1695988.99	14369017.73	39°34'6.8997"N	80°48'10.0949"W	15060.15	349.288	0.11	0.00	0.11	
22357.00	90.150	340.830	6827.46	15003.88	14890.34	-2831.28	1695956.99	14369110.32	39°34'7.8158"N	80°48'10.5010"W	15157.12	349.234	0.23	-0.07	-0.21	



Actual Wellpath Report

Axtel Unit 1H AWP Proj: 24045'

Page 10 of 13



REFERENCE WELLPATH IDENTIFICATION			
Operator	ANTERO RESOURCES CORPORATION	Well	Axtel Unit 1H
Field	Tyler	API	47-095-02753-0000
Facility	Thin Air Pad	Wellbore	Axtel Unit 1H AWB
Slot	Slot G		

WELLPATH DATA (258 stations) † = interpolated, ‡ = extrapolated station																
MD (ft)	Inclination (°)	Azimuth (°)	TVD (ft)	Vert Sect (ft)	North (ft)	East (ft)	Grid East (US ft)	Grid North (US ft)	Latitude	Longitude	Closure Dist (ft)	Closure Dir (°)	DLS (°/100ft)	Build Rate (°/100ft)	Turn Rate (°/100ft)	Comments
22455.00	90.370	340.910	6827.01	15101.88	14982.93	-2863.39	1695924.89	14369202.87	39°34'8.7316"N	80°48'10.9085"W	15254.08	349.181	0.24	0.22	0.08	
22553.00	90.250	340.870	6826.48	15199.88	15075.52	-2895.47	1695892.82	14369295.43	39°34'9.6475"N	80°48'11.3156"W	15351.06	349.128	0.13	-0.12	-0.04	
22652.00	90.220	340.900	6826.07	15298.88	15169.06	-2927.89	1695860.41	14369388.94	39°34'10.5726"N	80°48'11.7270"W	15449.05	349.075	0.04	-0.03	0.03	
22750.00	90.220	340.800	6825.70	15396.87	15261.64	-2960.04	1695828.28	14369481.48	39°34'11.4883"N	80°48'12.1349"W	15546.05	349.024	0.10	0.00	-0.10	
22847.00	90.370	341.150	6825.20	15493.87	15353.34	-2991.66	1695796.67	14369573.14	39°34'12.3953"N	80°48'12.5361"W	15642.09	348.974	0.39	0.15	0.36	
22945.00	90.180	340.900	6824.73	15591.87	15446.01	-3023.53	1695764.82	14369665.78	39°34'13.3119"N	80°48'12.9404"W	15739.16	348.925	0.32	-0.19	-0.26	
23043.00	90.250	341.050	6824.36	15689.87	15538.66	-3055.47	1695732.88	14369758.38	39°34'14.2282"N	80°48'13.3458"W	15836.22	348.875	0.17	0.07	0.15	
23140.00	90.090	340.570	6824.07	15786.87	15630.27	-3087.36	1695701.01	14369849.96	39°34'15.1343"N	80°48'13.7504"W	15932.27	348.827	0.52	-0.16	-0.49	
23238.00	90.220	340.970	6823.81	15884.87	15722.80	-3119.63	1695668.75	14369942.45	39°34'16.0495"N	80°48'14.1600"W	16029.30	348.777	0.43	0.13	0.41	
23336.00	90.310	340.800	6823.35	15982.87	15815.40	-3151.72	1695636.67	14370035.01	39°34'16.9653"N	80°48'14.5672"W	16126.38	348.730	0.20	0.09	-0.17	
23433.00	90.250	341.010	6822.88	16079.86	15907.06	-3183.46	1695604.95	14370126.64	39°34'17.8719"N	80°48'14.9699"W	16222.48	348.683	0.23	-0.06	0.22	
23532.00	90.310	340.820	6822.40	16178.86	16000.62	-3215.83	1695572.59	14370220.16	39°34'18.7973"N	80°48'15.3806"W	16320.58	348.636	0.20	0.06	-0.19	
23630.00	90.220	340.850	6821.94	16276.86	16093.18	-3248.00	1695540.44	14370312.69	39°34'19.7128"N	80°48'15.7889"W	16417.67	348.590	0.10	-0.09	0.03	
23727.00	90.120	340.920	6821.66	16373.86	16184.83	-3279.76	1695508.68	14370404.30	39°34'20.6193"N	80°48'16.1920"W	16513.80	348.544	0.13	-0.10	0.07	
23825.00	90.180	340.890	6821.40	16471.86	16277.44	-3311.82	1695476.64	14370496.87	39°34'21.5353"N	80°48'16.5988"W	16610.94	348.500	0.07	0.06	-0.03	
23921.00	90.220	340.850	6821.06	16567.86	16368.14	-3343.28	1695445.19	14370587.53	39°34'22.4323"N	80°48'16.9980"W	16706.09	348.456	0.06	0.04	-0.04	
24018.00	90.120	340.780	6820.78	16664.86	16459.75	-3375.16	1695413.33	14370679.11	39°34'23.3384"N	80°48'17.4025"W	16802.24	348.412	0.13	-0.10	-0.07	
24045.00‡	90.120	340.780	6820.72	16691.86	16485.25	-3384.04	1695404.44	14370704.60	39°34'23.5906"N	80°48'17.5153"W	16829.00	348.400	0.00	0.00	0.00	Projected MD at TD: 24045'



Actual Wellpath Report

Axtel Unit 1H AWP Proj: 24045'

Page 11 of 13



REFERENCE WELLPATH IDENTIFICATION			
Operator	ANTERO RESOURCES CORPORATION	Well	Axtel Unit 1H
Field	Tyler	API	47-095-02753-0000
Facility	Thin Air Pad	Wellbore	Axtel Unit 1H AWB
Slot	Slot G		

HOLE & CASING SECTIONS - Ref Wellbore: Axtel Unit 1H AWB Ref Wellpath: Axtel Unit 1H AWP Proj: 24045'									
String/Diameter	Start MD [ft]	End MD [ft]	Interval [ft]	Start TVD [ft]	End TVD [ft]	Start N/S [ft]	Start E/W [ft]	End N/S [ft]	End E/W [ft]
20in Conductor	25.50	126.00	100.50	25.50	126.00	0.00	0.00	0.17	-0.07
17.5in Open Hole	126.00	479.00	353.00	126.00	479.00	0.17	-0.07	1.50	0.16
13.375in Casing Surface	25.50	459.00	433.50	25.50	459.00	0.00	0.00	1.38	0.11
12.25in Open Hole	479.00	2737.00	2258.00	479.00	2612.04	1.50	0.16	123.90	677.40
9.625in Casing Intermediate	25.50	2717.00	2691.50	25.50	2593.35	0.00	0.00	122.21	670.49
8.75in Open Hole	2737.00	5897.00	3160.00	2612.04	5583.32	123.90	677.40	230.51	1739.84
8.5in Open Hole	5897.00	24045.00	18148.00	5583.32	6820.72	230.51	1739.84	16485.25	-3384.04
5.5in Casing Production	25.50	24025.00	23999.50	25.50	6820.76	0.00	0.00	16466.36	-3377.46

TARGETS								
Name	TVD [ft]	North [ft]	East [ft]	Grid East [US ft]	Grid North [US ft]	Latitude	Longitude	Shape
Axtel Unit 1H POE Rev-3	6856.00	844.04	2003.60	1700789.94	14355069.61	39°31'48.8835"N	80°47'9.1898"W	point
Axtel Unit 1H BHL Rev-3	6882.00	16499.29	-3362.46	1695426.02	14370718.63	39°34'23.7289"N	80°48'17.2393"W	point
Axtel Unit 1H LP Rev-3	6882.00	1024.93	1941.59	1700727.96	14355250.43	39°31'50.6728"N	80°47'9.9756"W	point
Axtel Unit 1H 50' L/R Hard Line	7000.00	8671.66	-679.43	1698107.98	14362894.12	39°33'6.3077"N	80°47'43.2041"W	rectangle
2D Rectangle 16549.4 x 100.								



Actual Wellpath Report

Axtel Unit 1H AWP Proj: 24045'

Page 12 of 13



REFERENCE WELLPATH IDENTIFICATION			
Operator	ANTERO RESOURCES CORPORATION	Well	Axtel Unit 1H
Field	Tyler	API	47-095-02753-0000
Facility	Thin Air Pad	Wellbore	Axtel Unit 1H AWB
Slot	Slot G		

WELLPATH COMPOSITION - Ref Wellbore: Axtel Unit 1H AWB Ref Wellpath: Axtel Unit 1H AWP Proj: 24045'					
Start MD [ft]	End MD [ft]	Positional Uncertainty Model	Log Name/Comment	Wellbore	Survey Date
25.50	467.00	Gyrodatta 2015 - GC+WIR+DPIPE	01 Gyrodatta MS Gyro <17-1/2"> (100'-467')	Axtel Unit 1H AWB	26/Nov/2021
467.00	2668.00	BH NaviTrak (2019) (Axial Corr+HRGM)	02 APS EM <12-1/4"> (467')(502'-2668')	Axtel Unit 1H AWB	26/Nov/2021
2668.00	5828.00	BH NaviTrak (2019) (Axial Corr+HRGM)	03 APS EM <8-3/4"> (2668')(2807'-5828')	Axtel Unit 1H AWB	21/Feb/2022
5828.00	24045.00	BH AutoTrak Curve/eXpress (2019) (HRGM, Short spacing)	04 BH AT Curve <8-1/2"> (5828')(5871'-24018')	Axtel Unit 1H AWB	21/Feb/2022



Actual Wellpath Report

Axtel Unit 1H AWP Proj: 24045'

Page 13 of 13



REFERENCE WELLPATH IDENTIFICATION			
Operator	ANTERO RESOURCES CORPORATION	Well	Axtel Unit 1H
Field	Tyler	API	47-095-02753-0000
Facility	Thin Air Pad	Wellbore	Axtel Unit 1H AWB
Slot	Slot G		

COMMENTS

Wellpath general comments

API: 47-095-02753-0000

BH Job #: 111128231

Rig: H&P 317

Duration: 2/27/2022-3/4/2022

Gyrodata MS Gyro <17-1/2"> (100'-467')

APS EM <12-1/4"> (467')(502'-2668')

APS EM <8-3/4"> (2668')(2807'-5828')

BH AT Curve <8-1/2"> (5828')(5871'-24018')

Sycamore: 6964' MD

Middlesex: 7127' MD

Burkett: 7286' MD

Tully: 7342' MD

Marcellus POE: 7505' MD

Projected MD at TD: 24045'