



ANTERO RESOURCES CORPORATION



Location: Tyler County, WV
 Field: Tyler
 Facility: Thin Air Pad

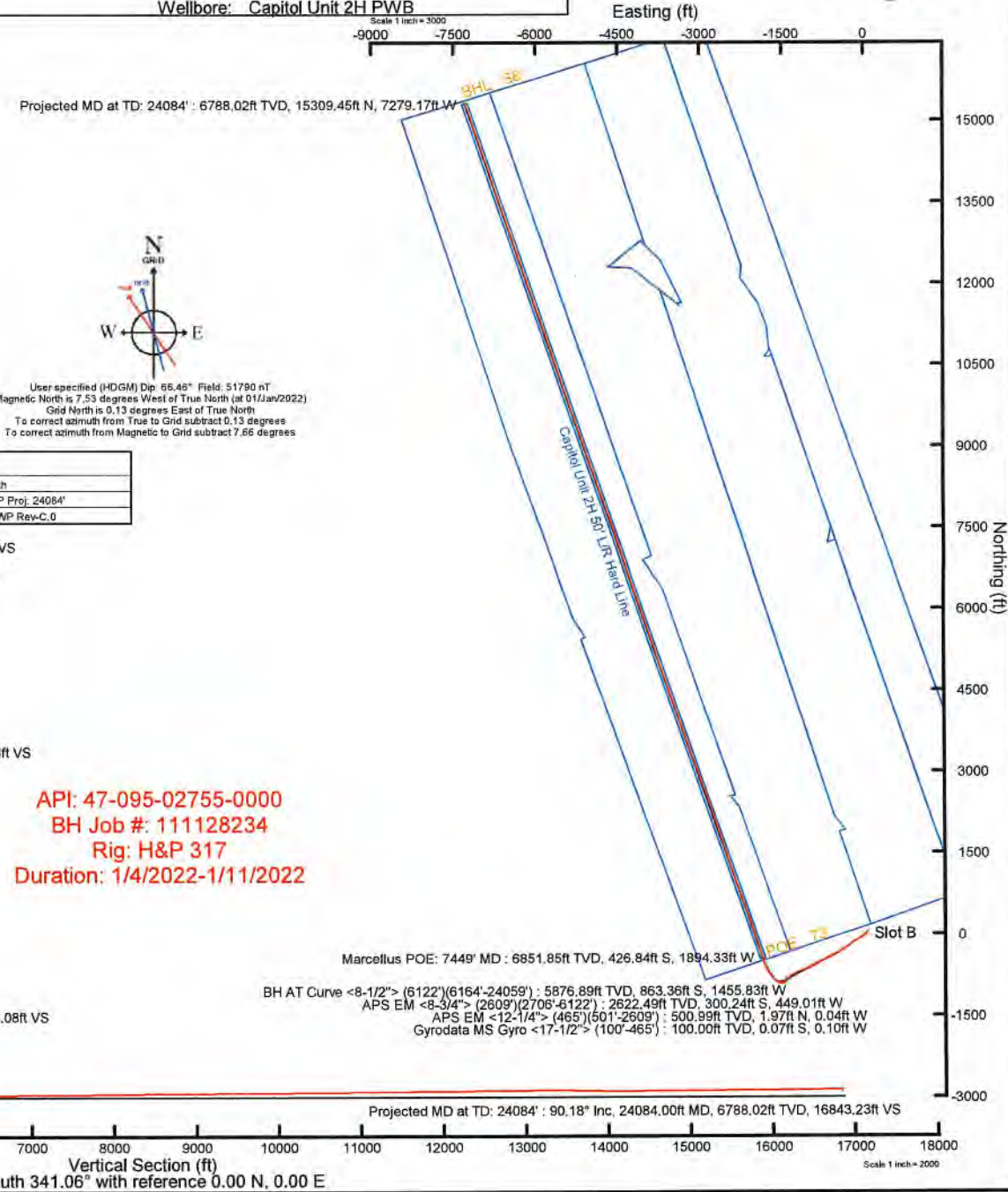
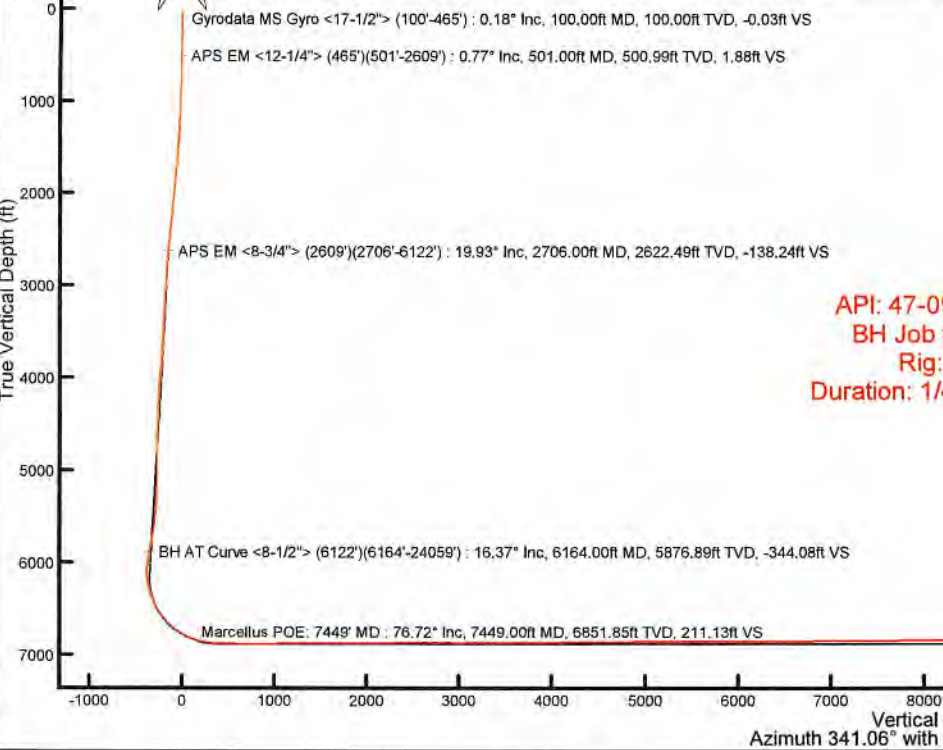
Slot: Slot B
 Well: Capitol Unit 2H
 Wellbore: Capitol Unit 2H PWB

Plot reference wellpath is Capitol Unit 2H PWP Rev-C.0	Grid System: NAD27 / UTM Zone 17 North, US feet
This vertical depths are referenced to H&P 317 (RKB)	North Reference: Grid north
Reference wellpath measured depths are referenced to H&P 317 (RKB)	Scale: True distance
H&P 317 (RKB) to Mean Sea Level: 1225.5 feet	Coordinates are in feet referenced to Slot
Mean Sea Level to Ground level (At Slot: Slot B): -1200 feet	Depths are in feet
Official wellpath MDs are referenced to each path's default MD datum	Created by: edward@ar on 2022-02-06; Database: WA_MPL_EASTERNUS_Datm

Location Information					
Facility Name	Grid East (US ft)	Grid North (US ft)	Latitude	Longitude	
Thin Air Pad	1698787.140	14354225.910	39°31'40.5880"N	80°47'34.7850"W	
Slot	Local N (ft)	Local E (ft)	Grid East (US ft)	Grid North (US ft)	Latitude
Slot B	-51.52	-42.33	1698744.830	14354164.010	39°31'39.9770"N
Comment: Capitol Unit 2H					
H&P 317 (RKB) to Ground level (At Slot: Slot B)					29.5ft
Mean Sea Level to Ground level (At Slot: Slot B)					-1200ft
H&P 317 (RKB) to Mean Sea Level					1225.5ft

Well Profile Data								
Design Comment	MD (ft)	Inc (")	Az (")	TVD (ft)	Local N (ft)	Local E (ft)	DLS (1/100ft)	VS (ft)
Tie On	2609.00	19.600	234.969	2531.20	-281.07	-422.40	0.89	-128.75
Proj. to Bottom	2684.00	19.600	234.969	2601.85	-295.51	-443.00	0.00	-135.72
Drill Out	2764.00	19.600	234.969	2677.22	-310.92	-464.97	0.00	-143.17
End of 3D Arc	2877.91	19.283	241.742	2784.65	-330.80	-497.18	2.00	-151.51
Curve KOP	6436.14	19.283	241.742	6143.26	-887.11	-1532.18	0.00	-341.77
POE	7416.57	74.514	341.059	6851.00	-445.74	-1885.01	8.00	190.23
Landing Pt	7610.14	90.000	341.059	6877.00	-264.87	-1947.08	8.00	361.45
BHL	24088.42	90.000	341.059	6877.00	15322.13	-7206.13	0.00	16880.74

Well Data			
Slot	Well	Wellbore	Wellpath
Slot B	Capitol Unit 2H	Capitol Unit 2H AWP	Capitol Unit 2H AWP Proj: 24084'
Slot B	Capitol Unit 2H	Capitol Unit 2H PWB	Capitol Unit 2H PWP Rev-C.0



API: 47-095-02755-0000
 BH Job #: 111128234
 Rig: H&P 317
 Duration: 1/4/2022-1/11/2022

Marcellus POE: 7449' MD : 6851.85ft TVD, 426.84ft S, 1894.33ft W
 BH AT Curve <8-1/2"> (6122')(6164'-24059') : 5876.89ft TVD, 863.36ft S, 1455.83ft W
 APS EM <8-3/4"> (2609')(2706'-6122') : 2622.49ft TVD, 300.24ft S, 449.01ft W
 APS EM <12-1/4"> (465')(501'-2609') : 500.99ft TVD, 1.97ft N, 0.04ft W
 Gyrodata MS Gyro <17-1/2"> (100'-465') : 100.00ft TVD, 0.07ft S, 0.10ft W



Actual Wellpath Report

Capitol Unit 2H AWP Proj: 24084'

Page 1 of 13



REFERENCE WELLPATH IDENTIFICATION			
Operator	ANTERO RESOURCES CORPORATION	Well	Capitol Unit 2H
Field	Tyler	API	47-095-02755-0000
Facility	Thin Air Pad	Wellbore	Capitol Unit 2H AWB
Slot	Slot B		

REPORT SETUP INFORMATION			
Projection System	NAD27 / UTM Zone 17 North, US feet	Software System	WellArchitect@ 6.0
North Reference	Grid	User	Edsaryar
Scale	0.999604	Report Generated	06/Feb/2022 at 16:05
Convergence at slot	0.13° East	Database	WA_MPL_EASTERNUS_Defn

WELLPATH LOCATION						
	Local coordinates		Grid coordinates		Geographic coordinates	
	North[ft]	East[ft]	Easting[US ft]	Northing[US ft]	Latitude	Longitude
Slot Location	-61.92	-42.33	1698744.83	14354164.01	39°31'39.9770"N	80°47'35.3270"W
Facility Reference Pt			1698787.14	14354225.91	39°31'40.5880"N	80°47'34.7850"W
Field Reference Pt			0.00	0.00	0°00'0.0000"	85°29'19.3013"W

WELLPATH DATUM			
Calculation method	Minimum curvature	H&P 317 (RKB) to Facility Vertical Datum	1225.50ft
Horizontal Reference Pt	Slot	H&P 317 (RKB) to Mean Sea Level	1225.50ft
Vertical Reference Pt	H&P 317 (RKB)	H&P 317 (RKB) to Ground Level at Slot (Slot B)	25.50ft
MD Reference Pt	H&P 317 (RKB)	Section Origin	N 0.00, E 0.00 ft
Field Vertical Reference	Mean Sea Level	Section Azimuth	341.06°



Actual Wellpath Report

Capitol Unit 2H AWP Proj: 24084'

Page 2 of 13



REFERENCE WELLPATH IDENTIFICATION			
Operator	ANTERO RESOURCES CORPORATION	Well	Capitol Unit 2H
Field	Tyler	API	47-095-02755-0000
Facility	Thin Air Pad	Wellbore	Capitol Unit 2H AWB
Slot	Slot B		

WELLPATH DATA (257 stations) † = interpolated, ‡ = extrapolated station																
MD [ft]	Inclination [°]	Azimuth [°]	TVD [ft]	Vert Sect [ft]	North [ft]	East [ft]	Grid East [US ft]	Grid North [US ft]	Latitude	Longitude	Closure Dist [ft]	Closure Dir [°]	DLS [°/100ft]	Build Rate [°/100ft]	Turn Rate [°/100ft]	Comments
0.00†	0.000	234.730	0.00	0.00	0.00	0.00	1698744.83	14354164.01	39°31'39.9770"N	80°47'35.3270"W	0.00	0.000	0.00	0.00	0.00	
25.50	0.000	234.730	25.50	0.00	0.00	0.00	1698744.83	14354164.01	39°31'39.9770"N	80°47'35.3270"W	0.00	0.000	0.00	0.00	0.00	
100.00	0.180	234.730	100.00	-0.03	-0.07	-0.10	1698744.73	14354163.94	39°31'39.9763"N	80°47'35.3282"W	0.12	234.730	0.24	0.24	0.00	Gyrodata MS Gyro <17-1/2"> (100'-465')
200.00	0.110	42.820	200.00	-0.03	-0.09	-0.16	1698744.67	14354163.92	39°31'39.9761"N	80°47'35.3290"W	0.18	241.005	0.29	-0.07	168.09	
300.00	0.270	339.660	300.00	0.25	0.20	-0.18	1698744.65	14354164.21	39°31'39.9790"N	80°47'35.3292"W	0.27	319.271	0.24	0.16	-63.16	
400.00	0.480	3.240	400.00	0.87	0.84	-0.23	1698744.60	14354164.85	39°31'39.9853"N	80°47'35.3299"W	0.87	344.516	0.26	0.21	23.58	
465.00	0.720	14.230	464.99	1.47	1.51	-0.12	1698744.71	14354165.52	39°31'39.9919"N	80°47'35.3284"W	1.51	355.546	0.41	0.37	16.91	
501.00	0.770	5.100	500.99	1.88	1.97	-0.04	1698744.79	14354165.98	39°31'39.9964"N	80°47'35.3274"W	1.97	358.821	0.36	0.14	-25.36	APS EM <12-1/4"> (465')(501'-2609')
591.00	0.250	251.080	590.99	2.43	2.51	-0.17	1698744.66	14354166.52	39°31'40.0018"N	80°47'35.3291"W	2.52	356.067	1.00	-0.58	-126.69	
681.00	2.060	239.550	680.97	2.11	1.63	-1.75	1698743.08	14354165.64	39°31'39.9931"N	80°47'35.3493"W	2.39	312.844	2.02	2.01	-12.81	
771.00	3.540	235.320	770.86	1.03	-0.78	-5.43	1698739.40	14354163.24	39°31'39.9694"N	80°47'35.3963"W	5.49	261.879	1.66	1.64	-4.70	
861.00	5.360	231.900	860.58	-1.10	-4.95	-11.03	1698733.81	14354159.06	39°31'39.9283"N	80°47'35.4678"W	12.09	245.821	2.04	2.02	-3.80	
950.00	6.910	235.060	949.07	-3.94	-10.58	-18.69	1698726.15	14354153.43	39°31'39.8728"N	80°47'35.5657"W	21.47	240.478	1.78	1.74	3.55	
1041.00	8.700	235.830	1039.22	-7.26	-17.58	-28.87	1698715.97	14354146.43	39°31'39.8038"N	80°47'35.6959"W	33.80	238.656	1.97	1.97	0.85	
1136.00	10.600	236.610	1132.87	-11.33	-26.43	-42.11	1698702.74	14354137.59	39°31'39.7167"N	80°47'35.8651"W	49.72	237.888	2.00	2.00	0.82	
1230.00	12.270	237.840	1225.00	-15.77	-36.50	-57.79	1698687.07	14354127.52	39°31'39.6175"N	80°47'36.0655"W	68.35	237.719	1.80	1.78	1.31	
1325.00	14.210	239.660	1317.48	-20.38	-47.77	-76.40	1698668.46	14354116.26	39°31'39.5066"N	80°47'36.3033"W	90.10	237.984	2.09	2.04	1.92	
1419.00	15.330	237.880	1408.37	-25.50	-60.20	-96.88	1698647.99	14354103.83	39°31'39.3842"N	80°47'36.5651"W	114.06	238.142	1.29	1.19	-1.89	
1514.00	17.000	236.810	1499.61	-31.78	-74.48	-119.14	1698625.74	14354089.56	39°31'39.2435"N	80°47'36.8495"W	140.50	237.987	1.79	1.76	-1.13	
1609.00	19.140	237.300	1589.92	-38.90	-90.50	-143.87	1698601.02	14354073.55	39°31'39.0858"N	80°47'37.1656"W	169.97	237.828	2.26	2.25	0.52	
1704.00	19.490	235.780	1679.57	-46.79	-107.83	-170.08	1698574.82	14354056.23	39°31'38.9151"N	80°47'37.5006"W	201.38	237.626	0.64	0.37	-1.60	
1798.00	19.810	236.830	1768.10	-54.83	-125.36	-196.38	1698548.53	14354038.70	39°31'38.7424"N	80°47'37.8368"W	232.98	237.447	0.51	0.34	1.12	
1893.00	19.720	235.080	1857.50	-63.20	-143.34	-223.00	1698521.92	14354020.72	39°31'38.5653"N	80°47'38.1770"W	265.09	237.267	0.63	-0.09	-1.84	
1987.00	20.180	233.920	1945.86	-72.35	-161.97	-249.10	1698495.83	14354002.10	39°31'38.3818"N	80°47'38.5107"W	297.13	236.968	0.65	0.49	-1.23	
2082.00	19.510	233.990	2035.22	-81.83	-180.95	-275.18	1698469.76	14353983.13	39°31'38.1948"N	80°47'38.8440"W	329.34	236.673	0.71	-0.71	0.07	
2176.00	19.270	233.460	2123.89	-91.13	-199.41	-300.34	1698444.61	14353964.68	39°31'38.0129"N	80°47'39.1656"W	360.51	236.418	0.32	-0.26	-0.56	
2270.00	19.160	235.670	2212.65	-99.92	-217.35	-325.54	1698419.42	14353946.75	39°31'37.8362"N	80°47'39.4878"W	391.43	236.271	0.78	-0.12	2.35	
2365.00	20.180	237.720	2302.11	-107.83	-234.89	-352.27	1698392.70	14353929.21	39°31'37.6635"N	80°47'39.8294"W	423.40	236.305	1.30	1.07	2.16	
2460.00	20.390	237.140	2391.22	-115.60	-252.62	-380.02	1698364.96	14353911.49	39°31'37.4888"N	80°47'40.1841"W	456.33	236.386	0.31	0.22	-0.61	
2554.00	19.970	235.900	2479.45	-123.73	-270.50	-407.07	1698337.92	14353893.61	39°31'37.3127"N	80°47'40.5298"W	488.75	236.395	0.64	-0.45	-1.32	



Actual Wellpath Report

Capitol Unit 2H AWP Proj: 24084'

Page 3 of 13



REFERENCE WELLPATH IDENTIFICATION			
Operator	ANTERO RESOURCES CORPORATION	Well	Capitol Unit 2H
Field	Tyler	API	47-095-02755-0000
Facility	Thin Air Pad	Wellbore	Capitol Unit 2H AWB
Slot	Slot B		

WELLPATH DATA (257 stations)																
MD [ft]	Inclination [°]	Azimuth [°]	TVD [ft]	Vert Sect [ft]	North [ft]	East [ft]	Grid East [US ft]	Grid North [US ft]	Latitude	Longitude	Closure Dist [ft]	Closure Dir [°]	DLS ["/100ft]	Build Rate ["/100ft]	Turn Rate ["/100ft]	Comments
2609.00	19.600	234.960	2531.20	-128.75	-281.07	-422.40	1698322.60	14353883.06	39°31'37.2087"N	80°47'40.7257"W	507.37	236.360	0.89	-0.67	-1.71	
2706.00	19.930	233.510	2622.49	-138.24	-300.24	-449.01	1698296.00	14353863.89	39°31'37.0198"N	80°47'41.0659"W	540.14	236.231	0.61	0.34	-1.49	APS EM <8-3/4"> (2609')(2706'-6122')
2804.00	19.280	238.090	2714.81	-146.91	-318.73	-476.18	1698268.84	14353845.41	39°31'36.8377"N	80°47'41.4131"W	573.00	236.204	1.70	-0.66	4.67	
2899.00	19.930	243.030	2804.31	-152.69	-334.36	-503.92	1698241.11	14353829.78	39°31'36.6838"N	80°47'41.7676"W	604.76	236.435	1.87	0.68	5.20	
3005.00	20.740	241.120	2903.70	-158.46	-351.62	-536.46	1698208.58	14353812.53	39°31'36.5139"N	80°47'42.1834"W	641.42	236.757	0.99	0.76	-1.80	
3104.00	20.860	234.400	2996.26	-166.54	-370.35	-566.15	1698178.91	14353793.81	39°31'36.3295"N	80°47'42.5627"W	676.52	236.809	2.41	0.12	-6.79	
3198.00	19.630	237.990	3084.46	-174.91	-388.46	-593.14	1698151.92	14353775.70	39°31'36.1511"N	80°47'42.9078"W	709.03	236.778	1.86	-1.31	3.82	
3295.00	19.020	241.160	3175.99	-181.31	-404.72	-620.81	1698124.27	14353759.45	39°31'35.9910"N	80°47'43.2613"W	741.08	236.898	1.25	-0.63	3.27	
3392.00	18.530	243.010	3267.83	-186.19	-419.34	-648.39	1698096.70	14353744.83	39°31'35.8471"N	80°47'43.6137"W	772.18	237.107	0.79	-0.51	1.91	
3489.00	19.160	241.870	3359.63	-190.89	-433.84	-676.16	1698068.94	14353730.34	39°31'35.7044"N	80°47'43.9686"W	803.38	237.315	0.75	0.65	-1.18	
3586.00	18.770	246.750	3451.37	-194.60	-447.51	-704.54	1698040.57	14353716.68	39°31'35.5700"N	80°47'44.3311"W	834.65	237.577	1.68	-0.40	5.03	
3683.00	19.040	245.180	3543.14	-197.40	-460.31	-733.24	1698011.88	14353703.88	39°31'35.4441"N	80°47'44.6977"W	865.75	237.880	0.59	0.28	-1.62	
3780.00	19.470	238.460	3634.73	-202.54	-475.41	-761.38	1697983.75	14353688.79	39°31'35.2955"N	80°47'45.0573"W	897.62	238.019	2.33	0.44	-6.93	
3877.00	20.160	243.310	3725.99	-208.33	-491.38	-790.09	1697955.05	14353672.83	39°31'35.1384"N	80°47'45.4242"W	930.43	238.122	1.84	0.71	5.00	
3974.00	21.170	240.400	3816.75	-213.82	-507.54	-820.26	1697924.90	14353656.68	39°31'34.9793"N	80°47'45.8096"W	964.58	238.253	1.48	1.04	-3.00	
4071.00	20.550	235.420	3907.40	-221.65	-525.85	-849.51	1697895.66	14353638.37	39°31'34.7990"N	80°47'46.1834"W	999.09	238.242	1.94	-0.64	-5.13	
4167.00	19.870	241.600	3997.50	-228.87	-543.18	-877.74	1697867.44	14353621.05	39°31'34.6284"N	80°47'46.5441"W	1032.21	238.249	2.33	-0.71	6.44	
4263.00	19.750	238.220	4087.82	-235.16	-559.48	-905.88	1697839.31	14353604.75	39°31'34.4679"N	80°47'46.9037"W	1064.72	238.300	1.20	-0.12	-3.52	
4362.00	18.680	241.580	4181.31	-241.49	-575.83	-934.04	1697811.16	14353588.40	39°31'34.3069"N	80°47'47.2636"W	1097.28	238.346	1.55	-1.08	3.39	
4459.00	17.360	242.960	4273.55	-246.09	-589.81	-960.59	1697784.62	14353574.44	39°31'34.1694"N	80°47'47.6029"W	1127.21	238.450	1.43	-1.36	1.42	
4556.00	17.740	246.060	4366.03	-249.41	-602.38	-986.99	1697758.23	14353561.87	39°31'34.0457"N	80°47'47.9401"W	1156.29	238.603	1.04	0.39	3.20	
4655.00	16.790	238.870	4460.58	-253.75	-615.90	-1013.02	1697732.22	14353548.36	39°31'33.9127"N	80°47'48.2726"W	1185.55	238.701	2.36	-0.96	-7.26	
4753.00	16.360	240.720	4554.51	-259.21	-629.97	-1037.17	1697708.07	14353534.30	39°31'33.7742"N	80°47'48.5813"W	1213.50	238.726	0.69	-0.44	1.89	
4852.00	15.550	246.070	4649.70	-262.87	-642.17	-1061.46	1697683.79	14353522.10	39°31'33.6541"N	80°47'48.8916"W	1240.60	238.827	1.70	-0.82	5.40	
4951.00	16.990	250.190	4744.74	-264.25	-652.45	-1087.20	1697658.06	14353511.82	39°31'33.5530"N	80°47'49.2204"W	1267.95	239.031	1.86	1.45	4.16	
5049.00	20.280	255.190	4837.59	-263.24	-661.65	-1117.10	1697628.17	14353502.62	39°31'33.4628"N	80°47'49.6022"W	1298.35	239.362	3.73	3.36	5.10	
5145.00	21.620	254.660	4927.25	-260.93	-670.58	-1150.25	1697595.04	14353493.70	39°31'33.3753"N	80°47'50.0254"W	1331.45	239.758	1.41	1.40	-0.55	
5242.00	20.850	248.420	5017.67	-260.60	-681.66	-1183.54	1697561.76	14353482.62	39°31'33.2865"N	80°47'50.4506"W	1365.80	240.060	2.46	-0.79	-6.43	
5340.00	21.250	250.770	5109.13	-261.50	-693.92	-1216.52	1697528.79	14353470.36	39°31'33.1460"N	80°47'50.8719"W	1400.52	240.299	0.95	0.41	2.40	
5438.00	21.980	249.540	5200.24	-262.07	-706.18	-1250.48	1697494.85	14353458.11	39°31'33.0256"N	80°47'51.3055"W	1436.10	240.545	0.88	0.74	-1.26	



Actual Wellpath Report

Capitol Unit 2H AWP Proj: 24084'

Page 4 of 13



REFERENCE WELLPATH IDENTIFICATION			
Operator	ANTERO RESOURCES CORPORATION	Well	Capitol Unit 2H
Field	Tyler	API	47-095-02755-0000
Facility	Thin Air Pad	Wellbore	Capitol Unit 2H AWB
Slot	Slot B		

WELLPATH DATA (257 stations) † = interpolated, ‡ = extrapolated station																
MD (ft)	Inclination (°)	Azimuth (°)	TVD (ft)	Vert Sect (ft)	North (ft)	East (ft)	Grid East (US ft)	Grid North (US ft)	Latitude	Longitude	Closure Dist (ft)	Closure Dir (°)	DLS (°/100ft)	Build Rate (°/100ft)	Turn Rate (°/100ft)	Comments
5535.00	21.380	244.540	5290.39	-264.56	-720.13	-1283.45	1697461.89	14353444.17	39°31'32.8885"N	80°47'51.7267"W	1471.68	240.704	2.00	-0.62	-5.15	
5634.00	20.970	238.180	5382.71	-270.56	-737.23	-1314.80	1697430.55	14353427.07	39°31'32.7202"N	80°47'52.1273"W	1507.38	240.720	2.36	-0.41	-6.42	
5732.00	22.570	236.500	5473.72	-279.20	-756.86	-1345.39	1697399.98	14353407.45	39°31'32.5269"N	80°47'52.5182"W	1543.66	240.640	1.75	1.63	-1.71	
5831.00	22.230	231.290	5565.26	-290.31	-779.06	-1375.84	1697369.53	14353385.26	39°31'32.3082"N	80°47'52.9075"W	1581.10	240.480	2.03	-0.34	-5.26	
5929.00	22.320	228.740	5655.95	-303.65	-802.92	-1404.30	1697341.09	14353361.40	39°31'32.0729"N	80°47'53.2713"W	1617.64	240.241	0.99	0.09	-2.60	
6026.00	20.840	221.570	5746.16	-319.14	-827.99	-1429.60	1697315.80	14353336.35	39°31'31.8256"N	80°47'53.5949"W	1652.07	239.922	3.11	-1.53	-7.39	
6122.00	17.840	214.060	5836.75	-336.40	-852.95	-1449.17	1697296.23	14353311.40	39°31'31.5795"N	80°47'53.8454"W	1681.56	239.520	4.05	-3.12	-7.82	
6164.00	16.370	211.050	5876.89	-344.08	-863.36	-1455.83	1697289.58	14353301.00	39°31'31.4766"N	80°47'53.9307"W	1692.58	239.331	4.08	-3.50	-7.17	BH AT Curve <8-1/2"> (6122')(6164'-24059')
6258.00	17.690	225.550	5966.81	-358.76	-884.72	-1472.87	1697272.55	14353279.65	39°31'31.2661"N	80°47'54.1487"W	1718.16	239.008	4.72	1.40	15.43	
6355.00	20.000	242.610	6058.67	-367.55	-902.68	-1498.14	1697247.29	14353261.69	39°31'31.0890"N	80°47'54.4717"W	1749.07	238.929	6.13	2.38	17.59	
6451.00	19.960	256.910	6148.95	-368.29	-913.95	-1528.69	1697216.74	14353250.42	39°31'30.9783"N	80°47'54.8619"W	1781.07	239.126	5.08	-0.04	14.90	
6549.00	21.420	281.500	6240.80	-357.50	-914.18	-1562.59	1697182.86	14353250.20	39°31'30.9769"N	80°47'55.2945"W	1810.36	239.671	8.93	1.49	25.09	
6648.00	24.010	301.160	6332.25	-332.85	-900.13	-1597.59	1697147.87	14353264.24	39°31'31.1165"N	80°47'55.7408"W	1833.72	240.602	8.06	2.62	19.86	
6744.00	28.140	310.470	6418.49	-298.35	-875.31	-1631.56	1697113.92	14353289.05	39°31'31.3626"N	80°47'56.1735"W	1851.52	241.787	6.04	4.30	9.70	
6841.00	33.970	309.720	6501.56	-255.48	-843.11	-1669.84	1697075.66	14353321.23	39°31'31.6816"N	80°47'56.6611"W	1870.61	243.210	6.02	6.01	-0.77	
6896.00†	36.775	314.663	6546.41	-227.59	-821.71	-1693.38	1697052.13	14353342.62	39°31'31.8936"N	80°47'56.9609"W	1882.22	244.115	7.28	5.10	8.99	Sycamore: 6896' MD
6938.00	39.040	318.010	6579.55	-204.15	-803.04	-1711.17	1697034.34	14353361.29	39°31'32.0786"N	80°47'57.1874"W	1890.23	244.860	7.28	5.39	7.97	
7035.00	45.720	325.080	6651.20	-142.56	-751.78	-1751.55	1696993.97	14353412.53	39°31'32.5861"N	80°47'57.7013"W	1906.07	246.771	8.45	6.89	7.29	
7050.00†	46.742	326.198	6661.58	-132.12	-742.83	-1757.67	1696987.86	14353421.47	39°31'32.6746"N	80°47'57.7791"W	1908.19	247.090	8.68	6.81	7.45	Middlesex: 7050' MD
7134.00	52.640	331.830	6715.92	-69.52	-687.91	-1790.49	1696955.08	14353476.37	39°31'33.2181"N	80°47'58.1963"W	1918.09	248.983	8.68	7.02	6.71	
7212.00†	58.545	334.216	6759.98	-5.83	-630.57	-1819.62	1696925.93	14353533.69	39°31'33.7855"N	80°47'58.5665"W	1925.78	250.887	7.98	7.57	3.06	Burkett: 7212' MD
7231.00	59.990	334.750	6769.69	10.40	-615.84	-1826.66	1696918.90	14353548.42	39°31'33.9313"N	80°47'58.6559"W	1927.67	251.369	7.98	7.60	2.81	
7273.00†	62.197	337.434	6789.99	47.02	-582.23	-1841.55	1696904.02	14353582.02	39°31'34.2638"N	80°47'58.8449"W	1931.39	252.455	7.67	5.26	6.39	Tully: 7273' MD
7280.00	62.570	337.870	6793.24	53.21	-576.49	-1843.90	1696901.66	14353587.75	39°31'34.3205"N	80°47'58.8748"W	1931.92	252.638	7.67	5.33	6.23	
7330.00	66.150	339.900	6814.87	98.25	-534.45	-1860.13	1696885.44	14353629.78	39°31'34.7364"N	80°47'59.0807"W	1935.38	253.970	8.04	7.16	4.06	
7377.00	71.140	342.340	6831.98	142.00	-493.04	-1874.27	1696871.31	14353671.17	39°31'35.1460"N	80°47'59.2600"W	1938.03	255.262	11.67	10.62	5.19	
7428.00	75.180	343.560	6846.76	190.78	-446.38	-1888.57	1696857.01	14353717.81	39°31'35.6074"N	80°47'59.4412"W	1940.61	256.702	8.25	7.92	2.39	
7449.00†	76.716	343.586	6851.85	211.13	-426.84	-1894.33	1696851.25	14353737.34	39°31'35.8007"N	80°47'59.5142"W	1941.83	257.302	7.32	7.32	0.13	Marcellus POE: 7449' MD
7526.00	82.350	343.680	6865.84	286.74	-354.22	-1915.66	1696829.93	14353809.93	39°31'36.5189"N	80°47'59.7843"W	1948.14	259.524	7.32	7.32	0.12	
7624.00	89.850	343.510	6872.50	384.35	-260.49	-1943.26	1696802.35	14353903.62	39°31'37.4458"N	80°48'0.1338"W	1960.64	262.365	7.66	7.65	-0.17	



Actual Wellpath Report

Capitol Unit 2H AWP Proj: 24084'

Page 5 of 13



REFERENCE WELLPATH IDENTIFICATION			
Operator	ANTERO RESOURCES CORPORATION	Well	Capitol Unit 2H
Field	Tyler	API	47-095-02755-0000
Facility	Thin Air Pad	Wellbore	Capitol Unit 2H AWB
Slot	Slot B		

WELLPATH DATA (257 stations)																
MD (ft)	Inclination (°)	Azimuth (°)	TVD (ft)	Vert Sect (ft)	North (ft)	East (ft)	Grid East (US ft)	Grid North (US ft)	Latitude	Longitude	Closure Dist (ft)	Closure Dir (°)	DLS (°/100ft)	Build Rate (°/100ft)	Turn Rate (°/100ft)	Comments
7720.00	88.740	341.720	6873.68	480.30	-168.89	-1971.94	1696773.68	14353995.19	39°31'38.3518"N	80°48'0.4972"W	1979.16	265.105	2.19	-1.16	-1.86	
7814.00	88.830	342.230	6875.67	574.27	-79.53	-2001.02	1696744.61	14354084.52	39°31'39.2356"N	80°48'0.8658"W	2002.60	267.724	0.55	0.10	0.54	
7913.00	89.570	339.880	6877.05	673.25	14.10	-2033.15	1696712.49	14354178.10	39°31'40.1616"N	80°48'1.2732"W	2033.20	270.397	2.49	0.75	-2.37	
8011.00	90.650	341.700	6876.87	771.24	106.63	-2065.40	1696680.26	14354270.60	39°31'41.0769"N	80°48'1.6821"W	2068.15	272.955	2.16	1.10	1.86	
8108.00	90.000	340.940	6876.32	868.24	198.52	-2096.46	1696649.20	14354362.45	39°31'41.9857"N	80°48'2.0760"W	2105.84	275.409	1.03	-0.67	-0.78	
8205.00	90.220	340.120	6876.13	965.23	289.97	-2128.79	1696616.88	14354453.87	39°31'42.8903"N	80°48'2.4860"W	2148.45	277.757	0.88	0.23	-0.85	
8304.00	90.400	341.160	6875.59	1064.23	383.37	-2161.61	1696584.08	14354547.23	39°31'43.8141"N	80°48'2.9022"W	2195.34	280.057	1.07	0.18	1.05	
8402.00	90.250	341.300	6875.04	1162.23	476.16	-2193.14	1696552.56	14354639.98	39°31'44.7318"N	80°48'3.3020"W	2244.24	282.250	0.21	-0.15	0.14	
8499.00	90.030	340.040	6874.80	1259.22	567.69	-2225.25	1696520.46	14354731.47	39°31'45.6372"N	80°48'3.7091"W	2296.52	284.312	1.32	-0.23	-1.30	
8597.00	90.220	340.060	6874.59	1357.20	659.81	-2258.69	1696487.04	14354823.55	39°31'46.5483"N	80°48'4.1333"W	2353.09	286.284	0.19	0.19	0.02	
8695.00	90.310	339.990	6874.13	1456.19	751.91	-2292.17	1696453.58	14354915.62	39°31'47.4593"N	80°48'4.5579"W	2412.34	288.161	0.12	0.09	-0.07	
8792.00	90.310	341.310	6873.61	1552.18	843.43	-2324.30	1696421.45	14355007.10	39°31'48.3645"N	80°48'4.9655"W	2472.60	289.944	1.36	0.00	1.36	
8987.00	90.710	341.660	6871.87	1747.17	1028.33	-2386.22	1696359.56	14355191.93	39°31'50.1933"N	80°48'5.7506"W	2598.37	293.313	0.27	0.21	0.18	
9083.00	90.310	342.360	6871.02	1843.15	1119.63	-2415.87	1696329.92	14355283.19	39°31'51.0963"N	80°48'6.1264"W	2662.71	294.865	0.84	-0.42	0.73	
9181.00	89.910	341.830	6870.83	1941.13	1212.88	-2446.00	1696299.80	14355376.41	39°31'52.0186"N	80°48'6.5083"W	2730.20	296.375	0.68	-0.41	-0.54	
9279.00	89.750	341.430	6871.12	2039.13	1305.89	-2476.89	1696268.93	14355469.38	39°31'52.9385"N	80°48'6.8998"W	2800.06	297.800	0.44	-0.16	-0.41	
9377.00	90.120	342.240	6871.23	2137.12	1399.00	-2507.44	1696238.39	14355562.46	39°31'53.8594"N	80°48'7.2871"W	2871.32	299.159	0.91	0.38	0.83	
9473.00	91.230	343.120	6870.10	2233.07	1490.64	-2536.02	1696209.82	14355654.06	39°31'54.7657"N	80°48'7.6493"W	2941.66	300.447	1.48	1.16	0.92	
9571.00	90.150	340.940	6868.92	2331.04	1583.85	-2566.25	1696179.61	14355747.23	39°31'55.6876"N	80°48'8.0325"W	3015.66	301.682	2.48	-1.10	-2.22	
9669.00	90.120	341.530	6868.69	2429.04	1676.64	-2597.77	1696148.09	14355839.98	39°31'56.6053"N	80°48'8.4322"W	3091.85	302.839	0.60	-0.03	0.60	
9766.00	90.430	343.360	6868.23	2526.01	1769.11	-2627.03	1696118.85	14355932.42	39°31'57.5199"N	80°48'8.8030"W	3167.18	303.957	1.91	0.32	1.89	
9864.00	90.430	342.060	6867.49	2623.96	1862.68	-2656.15	1696089.74	14356025.95	39°31'58.4453"N	80°48'9.1721"W	3244.18	305.041	1.33	0.00	-1.33	
9961.00	89.410	341.500	6867.63	2720.95	1954.82	-2686.48	1696059.42	14356118.05	39°31'59.3566"N	80°48'9.5566"W	3322.42	306.041	1.20	-1.05	-0.58	
10060.00	89.690	341.390	6868.40	2819.95	2048.67	-2717.98	1696027.93	14356211.86	39°32'0.2848"N	80°48'9.9560"W	3403.60	307.007	0.30	0.28	-0.11	
10158.00	89.690	341.920	6868.93	2917.94	2141.68	-2748.83	1695997.10	14356304.84	39°32'1.2048"N	80°48'10.3471"W	3484.66	307.923	0.54	0.00	0.54	
10256.00	89.970	341.180	6869.22	3015.94	2234.65	-2779.84	1695966.10	14356397.77	39°32'2.1242"N	80°48'10.7403"W	3566.67	308.795	0.81	0.29	-0.76	
10353.00	90.710	341.030	6868.65	3112.93	2326.42	-2811.25	1695934.70	14356489.50	39°32'3.0319"N	80°48'11.1386"W	3649.02	309.609	0.78	0.76	-0.15	
10450.00	90.620	341.150	6867.52	3209.93	2418.18	-2842.69	1695903.28	14356581.22	39°32'3.9395"N	80°48'11.5373"W	3732.08	310.387	0.15	-0.09	0.12	
10546.00	90.740	340.390	6866.38	3305.92	2508.81	-2874.30	1695871.67	14356671.82	39°32'4.8359"N	80°48'11.9383"W	3815.20	311.116	0.80	0.12	-0.79	
10644.00	90.220	339.820	6865.56	3403.90	2600.96	-2907.65	1695838.34	14356763.93	39°32'5.7474"N	80°48'12.3613"W	3901.21	311.813	0.79	-0.53	-0.58	



Actual Wellpath Report

Capitol Unit 2H AWP Proj: 24084'

Page 6 of 13



REFERENCE WELLPATH IDENTIFICATION			
Operator	ANTERO RESOURCES CORPORATION	Well	Capitol Unit 2H
Field	Tyler	API	47-095-02755-0000
Facility	Thin Air Pad	Wellbore	Capitol Unit 2H AWB
Slot	Slot B		

WELLPATH DATA (257 stations)																
MD [ft]	Inclination [°]	Azimuth [°]	TVD [ft]	Vert Sect [ft]	North [ft]	East [ft]	Grid East [US ft]	Grid North [US ft]	Latitude	Longitude	Closure Dist [ft]	Closure Dir [°]	DLS ["/100ft]	Build Rate ["/100ft]	Turn Rate ["/100ft]	Comments
10840.00	90.250	340.140	6864.76	3599.86	2785.11	-2974.75	1695771.27	14356948.02	39°32'7.5689"N	80°48'13.2126"W	4075.05	313.114	0.16	0.02	0.16	
10938.00	90.150	339.470	6864.42	3697.84	2877.09	-3008.58	1695737.45	14357039.95	39°32'8.4786"N	80°48'13.6418"W	4162.83	313.720	0.69	-0.10	-0.68	
11036.00	90.250	340.380	6864.07	3795.82	2969.13	-3042.22	1695703.82	14357131.96	39°32'9.3890"N	80°48'14.0686"W	4250.98	314.303	0.93	0.10	0.93	
11132.00	90.400	340.370	6863.53	3891.81	3059.55	-3074.46	1695671.59	14357222.35	39°32'10.2834"N	80°48'14.4776"W	4337.42	314.861	0.16	0.16	-0.01	
11229.00	90.000	340.250	6863.19	3988.80	3150.88	-3107.14	1695638.92	14357313.64	39°32'11.1867"N	80°48'14.8922"W	4425.20	315.400	0.43	-0.41	-0.12	
11327.00	90.370	339.820	6862.87	4086.78	3242.99	-3140.60	1695605.48	14357405.71	39°32'12.0978"N	80°48'15.3167"W	4514.46	315.919	0.58	0.38	-0.44	
11424.00	90.580	341.060	6862.07	4183.77	3334.39	-3173.08	1695573.02	14357497.07	39°32'13.0018"N	80°48'15.7286"W	4602.89	316.420	1.30	0.22	1.28	
11523.00	90.490	340.980	6861.15	4282.77	3428.00	-3205.27	1695540.83	14357590.65	39°32'13.9277"N	80°48'16.1370"W	4693.08	316.923	0.12	-0.09	-0.08	
11717.00	90.400	341.160	6859.64	4476.76	3611.50	-3268.21	1695477.92	14357774.08	39°32'15.7426"N	80°48'16.9352"W	4870.74	317.857	0.10	-0.05	0.09	
11816.00	90.400	340.770	6858.95	4575.76	3705.09	-3300.50	1695445.65	14357867.62	39°32'16.6682"N	80°48'17.3447"W	4961.95	318.305	0.39	0.00	-0.39	
11913.00	90.460	341.010	6858.22	4672.76	3796.74	-3332.25	1695413.91	14357959.24	39°32'17.5747"N	80°48'17.7475"W	5051.65	318.728	0.26	0.06	0.25	
12010.00	90.770	341.090	6857.18	4769.75	3888.48	-3363.75	1695382.42	14358050.94	39°32'18.4821"N	80°48'18.1470"W	5141.50	319.138	0.33	0.32	0.08	
12107.00	90.680	341.000	6855.95	4866.74	3980.21	-3395.25	1695350.93	14358142.64	39°32'19.3894"N	80°48'18.5466"W	5231.62	319.535	0.13	-0.09	-0.09	
12206.00	90.120	340.750	6855.26	4965.74	4073.74	-3427.69	1695318.51	14358236.13	39°32'20.3145"N	80°48'18.9580"W	5323.95	319.922	0.62	-0.57	-0.25	
12303.00	90.430	341.130	6854.79	5062.74	4165.42	-3459.36	1695286.84	14358327.78	39°32'21.2213"N	80°48'19.3597"W	5414.61	320.291	0.51	0.32	0.39	
12400.00	89.880	341.110	6854.53	5159.74	4257.21	-3490.75	1695255.47	14358419.52	39°32'22.1290"N	80°48'19.7578"W	5505.37	320.650	0.57	-0.57	-0.02	
12497.00	89.940	341.340	6854.68	5256.74	4349.04	-3521.97	1695224.26	14358511.32	39°32'23.0374"N	80°48'20.1538"W	5596.29	320.999	0.25	0.06	0.24	
12595.00	89.850	340.810	6854.86	5354.74	4441.75	-3553.76	1695192.49	14358603.99	39°32'23.9542"N	80°48'20.5569"W	5688.43	321.337	0.55	-0.09	-0.54	
12693.00	90.250	341.580	6854.78	5452.73	4534.51	-3585.35	1695160.91	14358696.72	39°32'24.8718"N	80°48'20.9576"W	5780.70	321.667	0.89	0.41	0.79	
12792.00	89.940	341.280	6854.61	5551.73	4628.36	-3616.87	1695129.40	14358790.53	39°32'25.7999"N	80°48'21.3574"W	5873.97	321.994	0.44	-0.31	-0.30	
12890.00	90.030	341.010	6854.64	5649.73	4721.10	-3648.54	1695097.74	14358883.23	39°32'26.7172"N	80°48'21.7591"W	5966.63	322.303	0.29	0.09	-0.28	
12988.00	90.150	341.400	6854.49	5747.73	4813.87	-3680.12	1695066.18	14358975.97	39°32'27.6348"N	80°48'22.1596"W	6059.43	322.603	0.42	0.12	0.40	
13087.00	90.150	341.320	6854.23	5846.73	4907.68	-3711.76	1695034.55	14359069.74	39°32'28.5626"N	80°48'22.5609"W	6153.25	322.899	0.08	0.00	-0.08	
13185.00	89.780	340.860	6854.29	5944.73	5000.39	-3743.52	1695002.80	14359162.41	39°32'29.4795"N	80°48'22.9638"W	6246.43	323.180	0.60	-0.38	-0.47	
13284.00	90.030	340.980	6854.45	6043.73	5093.95	-3775.88	1694970.45	14359255.93	39°32'30.4049"N	80°48'23.3743"W	6340.79	323.452	0.28	0.25	0.12	
13382.00	90.090	341.230	6854.35	6141.73	5186.67	-3807.62	1694938.73	14359348.62	39°32'31.3219"N	80°48'23.7768"W	6434.25	323.717	0.26	0.06	0.26	
13480.00	90.460	341.130	6853.88	6239.73	5279.43	-3839.23	1694907.13	14359441.34	39°32'32.2394"N	80°48'24.1778"W	6527.79	323.975	0.39	0.38	-0.10	
13578.00	90.370	341.240	6853.17	6337.72	5372.19	-3870.84	1694875.53	14359534.06	39°32'33.1568"N	80°48'24.5787"W	6621.47	324.226	0.15	-0.09	0.11	
13677.00	90.620	341.130	6852.31	6436.72	5465.90	-3902.77	1694843.62	14359627.73	39°32'34.0836"N	80°48'24.9837"W	6716.22	324.472	0.28	0.25	-0.11	
13774.00	90.430	341.210	6851.42	6533.72	5557.70	-3934.07	1694812.32	14359719.50	39°32'34.9916"N	80°48'25.3808"W	6809.18	324.707	0.21	-0.20	0.08	



Actual Wellpath Report

Capitol Unit 2H AWP Proj: 24084'

Page 7 of 13



REFERENCE WELLPATH IDENTIFICATION			
Operator	ANTERO RESOURCES CORPORATION	Well	Capitol Unit 2H
Field	Tyler	API	47-095-02755-0000
Facility	Thin Air Pad	Wellbore	Capitol Unit 2H AWB
Slot	Slot B		

WELLPATH DATA (257 stations)																
MD [ft]	Inclination [°]	Azimuth [°]	TVD [ft]	Vert Sect [ft]	North [ft]	East [ft]	Grid East [US ft]	Grid North [US ft]	Latitude	Longitude	Closure Dist [ft]	Closure Dir [°]	DLS [°/100ft]	Build Rate [°/100ft]	Turn Rate [°/100ft]	Comments
13872.00	90.400	341.120	6850.71	6631.71	5650.45	-3965.71	1694780.70	14359812.21	39°32'35.9090"N	80°48'25.7821"W	6903.22	324.937	0.10	-0.03	-0.09	
13971.00	90.580	341.070	6849.87	6730.71	5744.11	-3997.78	1694748.64	14359905.83	39°32'36.8353"N	80°48'26.1889"W	6998.36	325.163	0.19	0.18	-0.05	
14066.00	90.550	341.040	6848.93	6825.70	5833.96	-4028.63	1694717.81	14359995.65	39°32'37.7239"N	80°48'26.5802"W	7089.77	325.373	0.04	-0.03	-0.03	
14165.00	90.180	340.810	6848.30	6924.70	5927.52	-4060.98	1694685.47	14360089.17	39°32'38.6493"N	80°48'26.9906"W	7185.20	325.585	0.44	-0.37	-0.23	
14263.00	90.550	341.030	6847.68	7022.70	6020.13	-4093.01	1694653.45	14360181.75	39°32'39.5653"N	80°48'27.3970"W	7279.75	325.789	0.44	0.38	0.22	
14360.00	90.310	341.050	6846.95	7119.70	6111.87	-4124.53	1694621.94	14360273.45	39°32'40.4726"N	80°48'27.7967"W	7373.38	325.987	0.25	-0.25	0.02	
14458.00	90.310	340.750	6846.42	7217.69	6204.47	-4156.60	1694589.89	14360366.01	39°32'41.3885"N	80°48'28.2036"W	7468.12	326.180	0.31	0.00	-0.31	
14556.00	90.550	341.280	6845.68	7315.69	6297.14	-4188.48	1694558.02	14360458.64	39°32'42.3050"N	80°48'28.6080"W	7562.89	326.371	0.59	0.24	0.54	
14653.00	90.490	341.060	6844.80	7412.69	6388.94	-4219.78	1694526.73	14360550.41	39°32'43.2130"N	80°48'29.0051"W	7656.71	326.556	0.24	-0.06	-0.23	
14750.00	90.520	341.160	6843.95	7509.68	6480.72	-4251.19	1694495.34	14360642.15	39°32'44.1207"N	80°48'29.4035"W	7750.63	326.736	0.11	0.03	0.10	
14848.00	90.490	341.350	6843.08	7607.68	6573.51	-4282.68	1694463.86	14360734.91	39°32'45.0385"N	80°48'29.8029"W	7845.53	326.916	0.20	-0.03	0.19	
14947.00	90.180	340.700	6842.50	7706.68	6667.13	-4314.87	1694431.68	14360828.49	39°32'45.9644"N	80°48'30.2113"W	7941.58	327.090	0.73	-0.31	-0.66	
15043.00	90.490	340.910	6841.94	7802.67	6757.79	-4346.43	1694400.13	14360919.11	39°32'46.8611"N	80°48'30.6117"W	8034.87	327.252	0.39	0.32	0.22	
15139.00	90.740	341.640	6840.91	7898.67	6848.71	-4377.25	1694369.33	14361009.99	39°32'47.7603"N	80°48'31.0027"W	8128.04	327.416	0.80	0.26	0.76	
15236.00	90.830	340.890	6839.58	7995.66	6940.56	-4408.40	1694338.19	14361101.80	39°32'48.6687"N	80°48'31.3978"W	8222.24	327.578	0.78	0.09	-0.77	
15332.00	90.280	340.420	6838.65	8091.65	7031.13	-4440.20	1694306.40	14361192.34	39°32'49.5646"N	80°48'31.8013"W	8315.78	327.727	0.75	-0.57	-0.49	
15428.00	90.990	341.870	6837.59	8187.64	7121.97	-4471.22	1694275.39	14361283.15	39°32'50.4630"N	80°48'32.1948"W	8409.18	327.879	1.68	0.74	1.51	
15525.00	90.370	341.240	6836.44	8284.63	7213.98	-4501.91	1694244.72	14361375.12	39°32'51.3730"N	80°48'32.5841"W	8503.45	328.034	0.91	-0.64	-0.65	
15622.00	90.950	341.680	6835.32	8381.62	7305.94	-4532.75	1694213.89	14361467.04	39°32'52.2825"N	80°48'32.9753"W	8597.82	328.184	0.75	0.60	0.45	
15720.00	90.680	341.050	6833.93	8479.61	7398.79	-4564.06	1694182.59	14361559.86	39°32'53.2009"N	80°48'33.3725"W	8693.26	328.331	0.70	-0.28	-0.64	
15818.00	90.650	340.950	6832.79	8577.60	7491.45	-4595.96	1694150.70	14361652.47	39°32'54.1173"N	80°48'33.7772"W	8788.89	328.471	0.11	-0.03	-0.10	
15915.00	90.800	341.020	6831.56	8674.59	7583.15	-4627.56	1694119.11	14361744.14	39°32'55.0242"N	80°48'34.1782"W	8883.61	328.607	0.17	0.15	0.07	
16011.00	90.400	341.000	6830.56	8770.59	7673.92	-4658.80	1694087.88	14361834.87	39°32'55.9220"N	80°48'34.5745"W	8977.38	328.738	0.42	-0.42	-0.02	
16108.00	89.910	340.420	6830.29	8867.58	7765.47	-4690.84	1694055.85	14361926.39	39°32'56.8275"N	80°48'34.9811"W	9072.30	328.865	0.78	-0.51	-0.60	
16206.00	90.400	341.360	6830.03	8965.58	7858.07	-4722.93	1694023.78	14362018.95	39°32'57.7433"N	80°48'35.3881"W	9168.17	328.993	1.08	0.50	0.96	
16304.00	90.430	341.560	6829.32	9063.58	7950.98	-4754.09	1693992.64	14362111.82	39°32'58.6623"N	80°48'35.7834"W	9263.88	329.124	0.21	0.03	0.20	
16402.00	89.660	340.170	6829.24	9161.57	8043.56	-4786.21	1693960.53	14362204.37	39°32'59.5779"N	80°48'36.1910"W	9359.84	329.246	1.62	-0.79	-1.42	
16500.00	90.740	341.270	6828.90	9259.57	8136.06	-4818.57	1693928.18	14362296.83	39°33'0.4928"N	80°48'36.6016"W	9455.90	329.364	1.57	1.10	1.12	
16598.00	89.940	340.500	6828.32	9357.56	8228.66	-4850.66	1693896.10	14362389.39	39°33'1.4066"N	80°48'37.0087"W	9551.95	329.481	1.13	-0.82	-0.79	
16696.00	90.310	341.310	6828.11	9455.56	8321.26	-4882.72	1693864.06	14362481.96	39°33'2.3245"N	80°48'37.4155"W	9648.02	329.597	0.91	0.38	0.83	



Actual Wellpath Report

Capitol Unit 2H AWP Proj: 24084'

Page 8 of 13



REFERENCE WELLPATH IDENTIFICATION				
Operator	ANTERO RESOURCES CORPORATION		Well	Capitol Unit 2H
Field	Tyler		API	47-095-02755-0000
Facility	Thin Air Pad		Wellbore	Capitol Unit 2H AWB
Slot	Slot B			

WELLPATH DATA (257 stations)																
MD (ft)	Inclination (°)	Azimuth (°)	TVD (ft)	Vert Sect (ft)	North (ft)	East (ft)	Grid East (US ft)	Grid North (US ft)	Latitude	Longitude	Closure Dist (ft)	Closure Dir (°)	DLS (°/100ft)	Build Rate (°/100ft)	Turn Rate (°/100ft)	Comments
16794.00	90.180	341.080	6827.69	9553.56	8414.03	-4914.31	1693832.48	14362574.69	39°33'3.2421"N	80°48'37.8163"W	9744.04	329.712	0.27	-0.13	-0.23	
16891.00	89.970	340.880	6827.56	9650.56	8505.73	-4945.92	1693800.88	14362666.36	39°33'4.1490"N	80°48'38.2174"W	9839.19	329.823	0.30	-0.22	-0.21	
16988.00	90.650	340.880	6827.03	9747.56	8597.38	-4977.69	1693769.12	14362757.97	39°33'5.0555"N	80°48'38.6205"W	9934.40	329.930	0.70	0.70	0.00	
17087.00	90.650	340.920	6825.91	9846.55	8690.93	-5010.08	1693736.74	14362851.48	39°33'5.9807"N	80°48'39.0315"W	10031.61	330.038	0.04	0.00	0.04	
17184.00	90.580	340.940	6824.87	9943.55	8782.60	-5041.77	1693705.06	14362943.11	39°33'6.8873"N	80°48'39.4336"W	10126.87	330.141	0.08	-0.07	0.02	
17281.00	90.710	341.330	6823.78	10040.54	8874.38	-5073.13	1693673.72	14363034.86	39°33'7.7951"N	80°48'39.8316"W	10222.10	330.245	0.42	0.13	0.40	
17377.00	90.520	340.870	6822.75	10136.53	8965.20	-5104.23	1693642.63	14363125.64	39°33'8.6933"N	80°48'40.2261"W	10316.39	330.345	0.52	-0.20	-0.48	
17475.00	90.550	340.970	6821.83	10234.53	9057.81	-5136.26	1693610.61	14363218.22	39°33'9.6093"N	80°48'40.6325"W	10412.74	330.444	0.11	0.03	0.10	
17572.00	90.340	341.490	6821.08	10331.53	9149.65	-5167.47	1693579.41	14363310.02	39°33'10.5176"N	80°48'41.0285"W	10508.04	330.543	0.58	-0.22	0.54	
17669.00	90.740	341.280	6820.17	10428.52	9241.57	-5198.43	1693548.47	14363401.90	39°33'11.4267"N	80°48'41.4213"W	10603.32	330.642	0.47	0.41	-0.22	
17768.00	90.820	341.120	6818.99	10527.51	9335.28	-5230.34	1693516.58	14363495.58	39°33'12.3536"N	80°48'41.8261"W	10700.65	330.739	0.20	-0.12	-0.16	
17865.00	90.460	341.180	6818.08	10624.51	9427.08	-5261.67	1693485.25	14363587.33	39°33'13.2614"N	80°48'42.2238"W	10796.06	330.832	0.18	-0.16	0.06	
17962.00	90.830	341.090	6816.98	10721.50	9518.86	-5293.04	1693453.90	14363679.08	39°33'14.1692"N	80°48'42.6217"W	10891.51	330.923	0.39	0.38	-0.09	
18060.00	90.280	341.010	6816.03	10819.50	9611.54	-5324.86	1693422.09	14363771.73	39°33'15.0859"N	80°48'43.0255"W	10987.99	331.013	0.57	-0.56	-0.08	
18156.00	90.460	341.110	6815.42	10915.49	9702.34	-5356.02	1693390.94	14363862.49	39°33'15.9839"N	80°48'43.4209"W	11082.53	331.100	0.21	0.19	0.10	
18253.00	90.620	341.230	6814.50	11012.49	9794.15	-5387.33	1693359.65	14363954.26	39°33'16.8919"N	80°48'43.8181"W	11178.04	331.187	0.21	0.16	0.12	
18351.00	90.430	341.080	6813.60	11110.49	9886.89	-5418.98	1693328.01	14364046.96	39°33'17.8092"N	80°48'44.2197"W	11274.57	331.273	0.25	-0.19	-0.15	
18448.00	90.550	341.100	6812.77	11207.48	9978.65	-5450.41	1693296.59	14364138.69	39°33'18.7167"N	80°48'44.6186"W	11370.16	331.356	0.13	0.12	0.02	
18546.00	90.520	341.170	6811.86	11305.48	10071.38	-5482.10	1693264.91	14364231.38	39°33'19.6339"N	80°48'45.0207"W	11466.74	331.439	0.08	-0.03	0.07	
18644.00	90.550	341.010	6810.94	11403.47	10164.09	-5513.86	1693233.17	14364324.05	39°33'20.5508"N	80°48'45.4237"W	11563.36	331.521	0.17	0.03	-0.16	
18742.00	90.490	340.990	6810.05	11501.47	10256.75	-5545.76	1693201.28	14364416.67	39°33'21.4672"N	80°48'45.8285"W	11660.03	331.600	0.06	-0.06	-0.02	
18839.00	90.520	341.030	6809.20	11598.46	10348.47	-5577.33	1693169.72	14364508.36	39°33'22.3743"N	80°48'46.2291"W	11755.73	331.677	0.05	0.03	0.04	
18935.00	90.550	341.090	6808.30	11694.46	10439.26	-5608.48	1693138.58	14364599.12	39°33'23.2723"N	80°48'46.6244"W	11850.46	331.753	0.07	0.03	0.06	
19033.00	90.490	341.020	6807.41	11792.46	10531.95	-5640.30	1693106.78	14364691.77	39°33'24.1890"N	80°48'47.0282"W	11947.17	331.829	0.09	-0.06	-0.07	
19132.00	90.400	341.350	6806.64	11891.45	10625.66	-5672.23	1693074.86	14364785.44	39°33'25.1158"N	80°48'47.4333"W	12044.86	331.906	0.35	-0.09	0.33	
19230.00	90.580	341.170	6805.81	11989.45	10718.46	-5703.71	1693043.39	14364878.20	39°33'26.0336"N	80°48'47.8328"W	12141.57	331.981	0.26	0.18	-0.18	
19329.00	90.550	341.300	6804.83	12088.44	10812.19	-5735.56	1693011.56	14364971.90	39°33'26.9607"N	80°48'48.2369"W	12239.29	332.055	0.13	-0.03	0.13	
19427.00	90.460	341.180	6803.97	12186.44	10904.98	-5767.07	1692980.05	14365064.65	39°33'27.8784"N	80°48'48.6368"W	12336.04	332.128	0.15	-0.09	-0.12	
19524.00	90.490	341.140	6803.16	12283.44	10996.78	-5798.39	1692948.74	14365156.41	39°33'28.7863"N	80°48'49.0343"W	12431.84	332.198	0.05	0.03	-0.04	
19623.00	90.580	341.090	6802.24	12382.43	11090.45	-5830.44	1692916.71	14365250.04	39°33'29.7127"N	80°48'49.4409"W	12529.65	332.268	0.10	0.09	-0.05	



Actual Wellpath Report

Capitol Unit 2H AWP Proj: 24084'

Page 9 of 13



REFERENCE WELLPATH IDENTIFICATION				
Operator	ANTERO RESOURCES CORPORATION		Well	Capitol Unit 2H
Field	Tyler		API	47-095-02755-0000
Facility	Thin Air Pad		Wellbore	Capitol Unit 2H AWB
Slot	Slot B			

WELLPATH DATA (257 stations)																
MD (ft)	Inclination (°)	Azimuth (°)	TVD (ft)	Vert Sect (ft)	North (ft)	East (ft)	Grid East (US ft)	Grid North (US ft)	Latitude	Longitude	Closure Dist (ft)	Closure Dir (°)	DLS (°/100ft)	Build Rate (°/100ft)	Turn Rate (°/100ft)	Comments
19720.00	90.620	340.900	6801.22	12479.43	11182.16	-5862.02	1692885.14	14365341.71	39°33'30.6197"N	80°48'49.8418"W	12625.53	332.335	0.20	0.04	-0.20	
19818.00	90.680	341.120	6800.11	12577.42	11274.82	-5893.91	1692853.27	14365434.34	39°33'31.5361"N	80°48'50.2464"W	12722.41	332.402	0.23	0.06	0.22	
19914.00	90.580	340.840	6799.05	12673.41	11365.57	-5925.19	1692821.99	14365525.06	39°33'32.4337"N	80°48'50.6435"W	12817.34	332.466	0.31	-0.10	-0.29	
20011.00	90.430	341.030	6798.20	12770.41	11457.25	-5956.88	1692790.32	14365616.69	39°33'33.3404"N	80°48'51.0456"W	12913.28	332.529	0.25	-0.15	0.20	
20108.00	90.550	340.890	6797.37	12867.41	11548.94	-5988.52	1692758.69	14365708.35	39°33'34.2472"N	80°48'51.4472"W	13009.24	332.592	0.19	0.12	-0.14	
20207.00	90.280	340.950	6796.65	12966.40	11642.49	-6020.88	1692726.35	14365801.87	39°33'35.1726"N	80°48'51.8579"W	13107.20	332.654	0.28	-0.27	0.06	
20304.00	90.770	341.030	6795.76	13063.40	11734.20	-6052.48	1692694.76	14365893.54	39°33'36.0796"N	80°48'52.2588"W	13203.18	332.715	0.51	0.51	0.08	
20401.00	90.800	341.130	6794.44	13160.39	11825.95	-6083.93	1692663.33	14365985.25	39°33'36.9870"N	80°48'52.6580"W	13299.15	332.776	0.11	0.03	0.10	
20500.00	89.970	341.120	6793.77	13259.39	11919.62	-6115.95	1692631.31	14366078.89	39°33'37.9134"N	80°48'53.0644"W	13397.10	332.838	0.84	-0.84	-0.01	
20598.00	89.880	340.710	6793.90	13357.39	12012.24	-6147.99	1692599.28	14366171.47	39°33'38.8294"N	80°48'53.4711"W	13494.14	332.896	0.43	-0.09	-0.42	
20696.00	90.060	341.140	6793.95	13455.39	12104.86	-6180.02	1692567.27	14366264.05	39°33'39.7454"N	80°48'53.8776"W	13591.18	332.954	0.48	0.18	0.44	
20795.00	86.740	340.950	6794.99	13554.38	12198.48	-6212.18	1692535.13	14366357.63	39°33'40.6714"N	80°48'54.2857"W	13689.20	333.012	1.35	-1.33	-0.19	
20893.00	89.170	341.330	6796.77	13652.36	12291.20	-6243.85	1692503.47	14366450.32	39°33'41.5885"N	80°48'54.6876"W	13786.20	333.070	0.59	0.44	0.39	
20990.00	88.520	340.250	6798.73	13749.34	12382.78	-6275.76	1692471.57	14366541.86	39°33'42.4942"N	80°48'55.0926"W	13882.31	333.123	1.30	-0.67	-1.11	
21088.00	89.110	341.210	6800.76	13847.31	12475.27	-6308.09	1692439.25	14366634.31	39°33'43.4089"N	80°48'55.5031"W	13979.43	333.177	1.15	0.60	0.98	
21187.00	88.920	341.040	6802.46	13946.30	12568.93	-6340.12	1692407.24	14366727.94	39°33'44.3353"N	80°48'55.9095"W	14077.47	333.232	0.26	-0.19	-0.17	
21284.00	89.820	340.830	6803.52	14043.29	12660.61	-6371.80	1692375.57	14366819.58	39°33'45.2419"N	80°48'56.3116"W	14173.59	333.285	0.95	0.93	-0.22	
21382.00	90.060	341.440	6803.63	14141.29	12753.34	-6403.48	1692343.89	14366912.27	39°33'46.1591"N	80°48'56.7138"W	14270.68	333.339	0.67	0.24	0.62	
21479.00	89.970	341.050	6803.60	14238.29	12845.19	-6434.67	1692312.72	14367004.09	39°33'47.0675"N	80°48'57.1096"W	14366.76	333.392	0.41	-0.09	-0.40	
21577.00	90.430	341.300	6803.26	14338.29	12937.95	-6466.29	1692281.11	14367096.81	39°33'47.9849"N	80°48'57.5109"W	14463.87	333.444	0.53	0.47	0.26	
21673.00	90.580	341.080	6802.41	14432.29	13028.82	-6497.25	1692250.17	14367187.64	39°33'48.8836"N	80°48'57.9037"W	14558.99	333.495	0.28	0.16	-0.23	
21771.00	90.400	340.990	6801.57	14530.28	13121.49	-6529.09	1692218.33	14367280.28	39°33'49.8002"N	80°48'58.3080"W	14656.15	333.546	0.21	-0.18	-0.09	
21868.00	90.400	340.840	6800.90	14627.28	13213.16	-6560.81	1692186.63	14367371.91	39°33'50.7068"N	80°48'58.7105"W	14752.35	333.594	0.15	0.00	-0.15	
21965.00	90.370	341.020	6800.25	14724.28	13304.83	-6592.50	1692154.95	14367463.55	39°33'51.6135"N	80°48'59.1128"W	14848.56	333.642	0.19	-0.03	0.19	
22062.00	90.580	341.400	6799.44	14821.27	13396.66	-6623.74	1692123.72	14367555.34	39°33'52.5216"N	80°48'59.5093"W	14944.71	333.691	0.45	0.22	0.39	
22160.00	90.460	340.970	6798.55	14919.27	13489.42	-6655.35	1692092.13	14367648.06	39°33'53.4390"N	80°48'59.9105"W	15041.88	333.739	0.46	-0.12	-0.44	
22258.00	90.550	340.990	6797.69	15017.26	13582.07	-6687.29	1692060.21	14367740.67	39°33'54.3553"N	80°49'0.3158"W	15139.10	333.786	0.09	0.09	0.02	
22356.00	90.370	341.320	6796.90	15115.26	13674.81	-6718.94	1692028.57	14367833.38	39°33'55.2726"N	80°49'0.7176"W	15236.29	333.833	0.38	-0.18	0.34	
22454.00	90.180	341.100	6796.43	15213.26	13767.59	-6750.50	1691997.01	14367926.11	39°33'56.1901"N	80°49'1.1182"W	15333.48	333.880	0.30	-0.19	-0.22	
22553.00	90.180	340.990	6796.12	15312.26	13861.22	-6782.66	1691964.87	14368019.71	39°33'57.1162"N	80°49'1.5264"W	15431.72	333.926	0.11	0.00	-0.11	



Actual Wellpath Report

Capitol Unit 2H AWP Proj: 24084'

Page 10 of 13



REFERENCE WELLPATH IDENTIFICATION

Operator	ANTERO RESOURCES CORPORATION	Well	Capitol Unit 2H
Field	Tyler	API	47-095-02755-0000
Facility	Thin Air Pad	Wellbore	Capitol Unit 2H AWB
Slot	Slot B		

WELLPATH DATA (257 stations) † = interpolated, ‡ = extrapolated station

MD [ft]	Inclination [°]	Azimuth [°]	TVD [ft]	Vert Sect [ft]	North [ft]	East [ft]	Grid East [US ft]	Grid North [US ft]	Latitude	Longitude	Closure Dist [ft]	Closure Dir [°]	DLS [°/100ft]	Build Rate [°/100ft]	Turn Rate [°/100ft]	Comments
22651.00	90.180	340.990	6795.81	15410.26	13953.87	-6814.58	1691932.96	14368112.33	39°33'58.0325"N	80°49'1.9316"W	15528.98	333.971	0.00	0.00	0.00	
22748.00	90.250	340.980	6795.45	15507.26	14045.58	-6846.19	1691901.37	14368204.00	39°33'58.9395"N	80°49'2.3328"W	15625.25	334.014	0.07	0.07	-0.01	
22846.00	90.400	341.090	6794.89	15605.26	14138.26	-6878.04	1691869.53	14368296.64	39°33'59.8561"N	80°49'2.7371"W	15722.52	334.058	0.19	0.15	0.11	
22944.00	90.150	341.070	6794.42	15703.25	14230.96	-6909.81	1691837.77	14368389.31	39°34'0.7730"N	80°49'3.1404"W	15819.79	334.101	0.26	-0.26	-0.02	
23041.00	90.460	341.010	6793.91	15800.25	14322.70	-6941.33	1691806.27	14368481.00	39°34'1.6803"N	80°49'3.5405"W	15916.08	334.143	0.33	0.32	-0.06	
23139.00	90.400	341.430	6793.17	15898.25	14415.48	-6972.88	1691774.73	14368573.75	39°34'2.5978"N	80°49'3.9409"W	16013.34	334.187	0.43	-0.06	0.43	
23237.00	90.180	341.170	6792.67	15996.25	14508.30	-7004.30	1691743.32	14368666.54	39°34'3.5159"N	80°49'4.3397"W	16110.59	334.230	0.35	-0.22	-0.27	
23334.00	90.340	341.050	6792.23	16093.25	14600.08	-7035.70	1691711.93	14368758.27	39°34'4.4236"N	80°49'4.7383"W	16206.89	334.271	0.21	0.16	-0.12	
23433.00	90.310	341.110	6791.67	16192.24	14693.73	-7067.80	1691679.84	14368851.89	39°34'5.3498"N	80°49'5.1458"W	16305.20	334.312	0.07	-0.03	0.06	
23531.00	90.430	341.140	6791.04	16290.24	14786.45	-7099.50	1691648.15	14368944.58	39°34'6.2668"N	80°49'5.5482"W	16402.51	334.353	0.13	0.12	0.03	
23628.00	90.280	340.880	6790.44	16387.24	14878.17	-7131.07	1691616.60	14369036.26	39°34'7.1740"N	80°49'5.9489"W	16498.85	334.392	0.31	-0.15	-0.27	
23726.00	90.460	341.020	6789.81	16485.24	14970.80	-7163.05	1691584.63	14369128.85	39°34'8.0901"N	80°49'6.3549"W	16596.21	334.430	0.23	0.18	0.14	
23822.00	90.340	341.230	6789.14	16581.24	15061.64	-7194.11	1691553.59	14369219.65	39°34'8.9885"N	80°49'6.7492"W	16691.56	334.469	0.25	-0.13	0.22	
23919.00	90.220	340.850	6788.66	16678.23	15153.38	-7225.62	1691522.08	14369311.35	39°34'9.8957"N	80°49'7.1492"W	16787.93	334.507	0.41	-0.12	-0.39	
24018.00	90.250	341.140	6788.26	16777.23	15246.98	-7257.86	1691489.86	14369404.92	39°34'10.8215"N	80°49'7.5585"W	16886.29	334.545	0.29	0.03	0.29	
24059.00	90.180	341.180	6788.10	16818.23	15285.78	-7271.10	1691476.62	14369443.71	39°34'11.2052"N	80°49'7.7266"W	16927.02	334.561	0.20	-0.17	0.10	
24084.00‡	90.180	341.180	6788.02	16843.23	15309.45	-7279.17	1691468.56	14369467.36	39°34'11.4393"N	80°49'7.8290"W	16951.85	334.570	0.00	0.00	0.00	Projected MD at TD: 24084'



Actual Wellpath Report

Capitol Unit 2H AWP Proj: 24084'

Page 11 of 13



REFERENCE WELLPATH IDENTIFICATION

Operator	ANTERO RESOURCES CORPORATION	Well	Capitol Unit 2H
Field	Tyler	API	47-095-02755-0000
Facility	Thin Air Pad	Wellbore	Capitol Unit 2H AWB
Slot	Slot B		

HOLE & CASING SECTIONS - Ref Wellbore: Capitol Unit 2H AWB Ref Wellpath: Capitol Unit 2H AWP Proj: 24084'

String/Diameter	Start MD [ft]	End MD [ft]	Interval [ft]	Start TVD [ft]	End TVD [ft]	Start N/S [ft]	Start E/W [ft]	End N/S [ft]	End E/W [ft]
20in Conductor	25.50	126.00	100.50	25.50	126.00	0.00	0.00	-0.10	-0.15
17.5in Open Hole	126.00	488.00	362.00	126.00	487.99	-0.10	-0.15	1.80	-0.06
13.375in Casing Surface	25.50	468.00	442.50	25.50	467.99	0.00	0.00	1.55	-0.11
12.25in Open Hole	488.00	2684.00	2196.00	487.99	2601.80	1.80	-0.06	-295.80	-442.98
9.625in Casing Intermediate	25.50	2664.00	2638.50	25.50	2582.98	0.00	0.00	-291.82	-437.50
8.75in Open Hole	2684.00	6190.00	3506.00	2601.80	5901.82	-295.80	-442.98	-869.53	-1459.87
8.5in Open Hole	6190.00	24084.00	17894.00	5901.82	6788.02	-869.53	-1459.87	15309.45	-7279.17
5.5in Casing Production	25.50	24064.00	24038.50	25.50	6788.09	0.00	0.00	15290.51	-7272.72

TARGETS

Name	TVD [ft]	North [ft]	East [ft]	Grid East [US ft]	Grid North [US ft]	Latitude	Longitude	Shape
Capitol Unit 2H POE Rev-4	6851.00	-445.74	-1885.01	1696860.57	14353718.45	39°31'35.6137"N	80°47'59.3957"W	point
Capitol Unit 2H BHL Rev-4	6877.00	15322.13	-7296.13	1691451.60	14369480.04	39°34'11.5650"N	80°49'8.0453"W	point
Capitol Unit 2H LP Rev-4	6877.00	-264.87	-1947.08	1696798.53	14353899.25	39°31'37.4027"N	80°48'0.1827"W	point
Capitol Unit 2H 50' L/R Hard Line	7000.00	7438.20	-4590.57	1694156.08	14361599.25	39°32'53.5909"N	80°48'33.7099"W	rectangle
2D Rectangle 16670.5 x 100.								



Actual Wellpath Report

Capitol Unit 2H AWP Proj: 24084'

Page 12 of 13



REFERENCE WELLPATH IDENTIFICATION			
Operator	ANTERO RESOURCES CORPORATION	Well	Capitol Unit 2H
Field	Tyler	API	47-095-02755-0000
Facility	Thin Air Pad	Wellbore	Capitol Unit 2H AWB
Slot	Slot B		

WELLPATH COMPOSITION - Ref Wellbore: Capitol Unit 2H AWB Ref Wellpath: Capitol Unit 2H AWP Proj: 24084'					
Start MD [ft]	End MD [ft]	Positional Uncertainty Model	Log Name/Comment	Wellbore	Survey Date
25.50	465.00	Gyrodata 2015 - GC+WVR+DPIPE	01_Gyrodata MS Gyro <17-1/2"> (100'-465')	Capitol Unit 2H AWB	14/Dec/2021
465.00	2609.00	BH NaviTrak (2019) (Axial Corr+HRGM)	02_APS EM <12-1/4"> (465')(501'-2609')	Capitol Unit 2H AWB	14/Dec/2021
2609.00	6122.00	BH NaviTrak (2019) (Axial Corr+HRGM)	03_APS EM <8-3/4"> (2609')(2706'-6122')	Capitol Unit 2H AWB	30/Dec/2021
6122.00	24084.00	BH AutoTrak Curve/eXpress (2019) (HRGM, Short spacing)	04_BH AT Curve <8-1/2"> (6122')(6164'-24059')	Capitol Unit 2H AWB	30/Dec/2021



Actual Wellpath Report

Capitol Unit 2H AWP Proj: 24084'

Page 13 of 13



REFERENCE WELLPATH IDENTIFICATION

Operator	ANTERO RESOURCES CORPORATION	Well	Capitol Unit 2H
Field	Tyler	API	47-095-02755-0000
Facility	Thin Air Pad	Wellbore	Capitol Unit 2H AWB
Slot	Slot B		

COMMENTS

Wellpath general comments

API: 47-095-02755-0000

BH Job #: 111128234

Rig: H&P 317

Duration: 1/4/2022-1/11/2022

Gyrodata MS Gyro <17-1/2"> (100'-465')

APS EM <12-1/4"> (465')(501'-2609')

APS EM <8-3/4"> (2609')(2706'-6122')

BH AT Curve <8-1/2"> (6122')(6164'-24059')

Sycamore: 6896' MD

Middlesex: 7050' MD

Burkett: 7212' MD

Tully: 7273' MD

Marcellus POE: 7449' MD

Projected MD at TD: 24084'