



ANTERO RESOURCES CORPORATION



Location: Tyler County, WV
 Field: Tyler
 Facility: Thin Air Pad

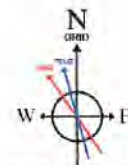
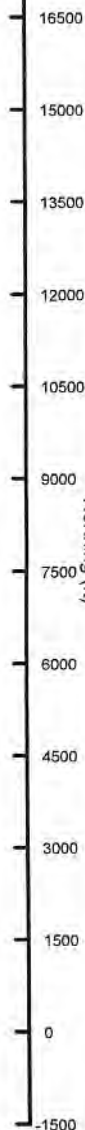
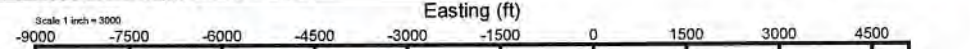
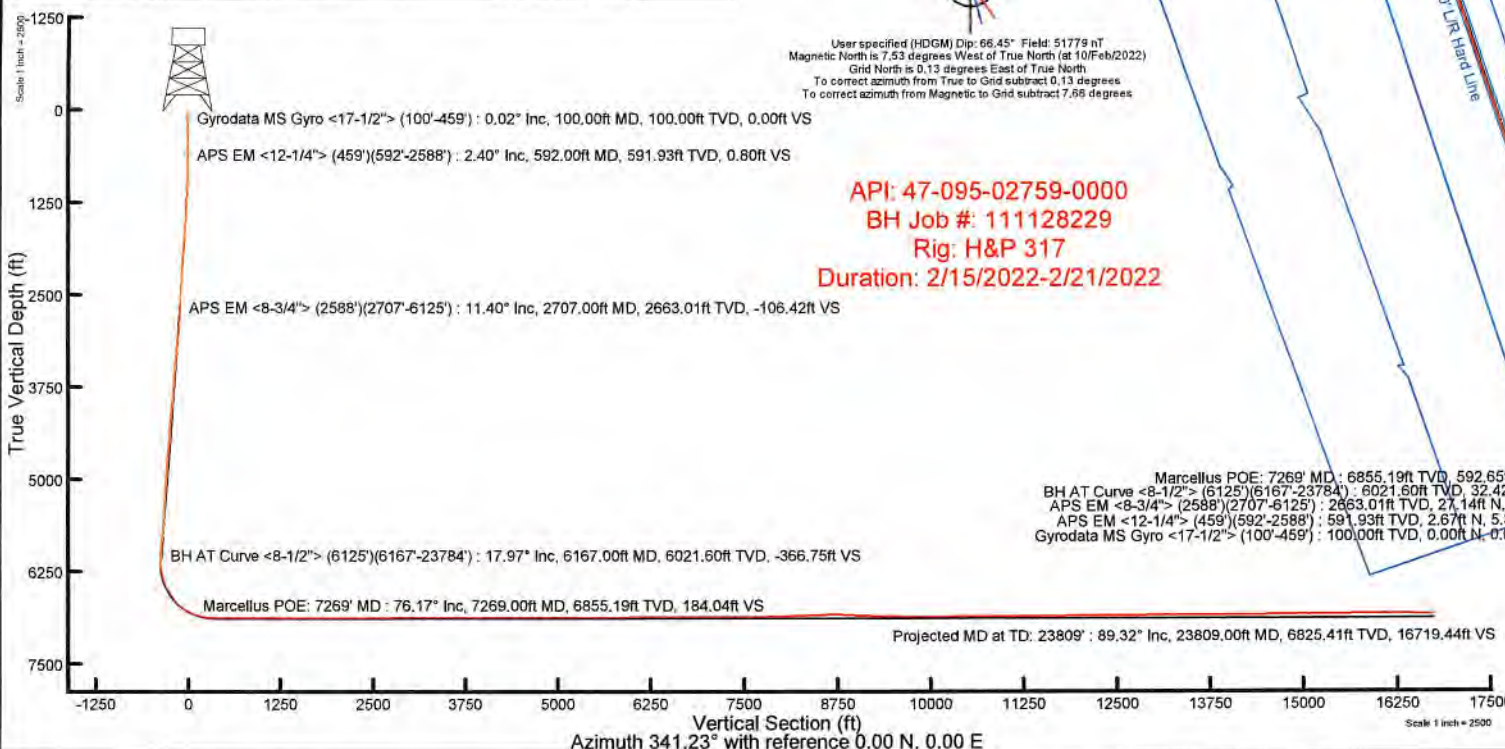
Slot: Slot F
 Well: Purple Unit 2H
 Wellbore: Purple Unit 2H PWB

Plot reference wellbore is Purple Unit 2H PWB Rev-C.0	Grid System: NAD27 / UTM Zone 17 North, US feet
True vertical depths are referenced to H&P 317 (RKB)	North Reference: Grid north
Reference wellbore measured depths are referenced to H&P 317 (RKB)	Scale: True distance
H&P 317 (RKB) to Mean Sea Level: 1225.5 feet	Coordinates are in feet referenced to Slot
Mean Sea Level to Ground level (At Slot: Slot F): -1200 feet	Depths are in feet
Offset wellbore MDs are referenced to each path's default MD datum	Created by: redstone on 2022-02-25; Database: WA_MPL_EASTERNUS_Dat

Location Information				
Facility Name	Grid East (US ft)	Grid North (US ft)	Latitude	Longitude
Thin Air Pad	1688787.140	14354225.910	39°31'40.5880"N	80°47'34.7850"W
Slot	Local N (ft)	Local E (ft)	Grid East (US ft)	Grid North (US ft)
Slot F	-12.36	-8.51	1698778.630	14354213.550
				39°31'40.4660"N
				80°47'34.8940"W
Comment	Purple Unit 2H			
H&P 317 (RKB) to Ground level (At Slot: Slot F)	25.5ft			
Mean Sea Level to Ground level (At Slot: Slot F)	-1200ft			
H&P 317 (RKB) to Mean Sea Level	1225.5ft			

Well Profile Data								
Design Comment	MD (ft)	Inc (")	Az (°)	TVD (ft)	Local N (ft)	Local E (ft)	DLS (°/100ft)	VS (ft)
Tie On	2588.00	12.340	85.810	2548.55	24.26	386.31	1.04	-101.33
Proj. to Bottom	2656.00	12.340	85.810	2612.98	25.33	400.80	0.00	-104.99
Drill Out	2736.00	12.340	85.810	2691.13	26.58	417.85	0.00	-109.29
End of 3D Arc	2803.99	13.393	89.676	2757.41	27.15	432.97	2.00	-113.61
Curve KOP	6262.36	13.393	89.676	6121.73	31.68	1234.03	0.00	-367.08
POE	7251.12	74.514	341.226	6855.00	572.10	1187.59	8.00	159.54
Landing Pt.	7444.69	90.000	341.226	6881.00	753.15	1128.05	8.00	350.76
BHL	23828.82	90.000	341.226	6881.00	16265.60	-4146.88	0.00	16734.90

Well Data			
Slot	Well	Wellbore	Wellpath
Slot F	Purple Unit 2H	Purple Unit 2H AWP	Purple Unit 2H AWP Proj: 23809'
Slot F	Purple Unit 2H	Purple Unit 2H PWB	Purple Unit 2H PWB Rev-C.0



User specified (HDCM) Dip: 66.45° Field: 51779 nT
 Magnetic North is 7.53 degrees West of True North (at 10/Feb/2022)
 Grid North is 0.13 degrees East of True North
 To correct azimuth from True to Grid subtract 0.13 degrees
 To correct azimuth from Magnetic to Grid subtract 7.66 degrees

API: 47-095-02759-0000
BH Job #: 111128229
Rig: H&P 317
Duration: 2/15/2022-2/21/2022

Marcellus POE: 7269' MD : 6855.19ft TVD, 592.65ft N, 1171.93ft E
 BH AT Curve <8-1/2"> (6125')(6167'-23784') : 6021.60ft TVD, 32.42ft N, 1235.20ft E
 APS EM <8-3/4"> (2588')(2707'-6125') : 2663.01ft TVD, 27.14ft N, 410.59ft E
 APS EM <12-1/4"> (459')(592'-2588') : 591.93ft TVD, 2.67ft N, 5.38ft E
 Gyrodata MS Gyro <17-1/2"> (100'-459') : 100.00ft TVD, 0.00ft N, 0.01ft E Slot F

Projected MD at TD: 23809' : 6825.41ft TVD, 16257.45ft N, 4122.80ft W

BHL 65

PCE 17

Scale 1 inch = 2500



Actual Wellpath Report

Purple Unit 2H AWP Proj: 23809'

Page 1 of 12



REFERENCE WELLPATH IDENTIFICATION

Operator	ANTERO RESOURCES CORPORATION	Well	Purple Unit 2H
Field	Tyler	API	47-095-02759-0000
Facility	Thin Air Pad	Wellbore	Purple Unit 2H AWB
Slot	Slot F		

REPORT SETUP INFORMATION

Projection System	NAD27 / UTM Zone 17 North, US feet	Software System	WellArchitect® 6.0
North Reference	Grid	User	Edsaryar
Scale	0.999604	Report Generated	25/Feb/2022 at 00:22
Convergence at slot	0.13° East	Database	WA_MPL_EASTERNUS_Defn

WELLPATH LOCATION

	Local coordinates		Grid coordinates		Geographic coordinates	
	North[ft]	East[ft]	Easting[US ft]	Northing[US ft]	Latitude	Longitude
Slot Location	-12.36	-8.51	1698778.63	14354213.55	39°31'40.4660"N	80°47'34.8940"W
Facility Reference Pt			1698787.14	14354225.91	39°31'40.5880"N	80°47'34.7850"W
Field Reference Pt			0.00	0.00	0°00'0.0000"	85°29'19.3013"W

WELLPATH DATUM

Calculation method	Minimum curvature	H&P 317 (RKB) to Facility Vertical Datum	1225.50ft
Horizontal Reference Pt	Slot	H&P 317 (RKB) to Mean Sea Level	1225.50ft
Vertical Reference Pt	H&P 317 (RKB)	H&P 317 (RKB) to Ground Level at Slot (Slot F)	25.50ft
MD Reference Pt	H&P 317 (RKB)	Section Origin	N 0.00, E 0.00 ft
Field Vertical Reference	Mean Sea Level	Section Azimuth	341.23°



Actual Wellpath Report

Purple Unit 2H AWP Proj: 23809'
Page 2 of 12



REFERENCE WELLPATH IDENTIFICATION			
Operator	ANTERO RESOURCES CORPORATION	Well	Purple Unit 2H
Field	Tyler	API	47-095-02759-0000
Facility	Thin Air Pad	Wellbore	Purple Unit 2H AWB
Slot	Slot F		

WELLPATH DATA (269 stations) † = interpolated, ‡ = extrapolated station																
MD	Inclination	Azimuth	TVD	Vert Sect	North	East	Grid East	Grid North	Latitude	Longitude	Closure Dist	Closure Dir	DLS	Build Rate	Turn Rate	Comments
[ft]	[°]	[°]	[ft]	[ft]	[ft]	[ft]	[US ft]	[US ft]			[ft]	[°]	[°/100ft]	[°/100ft]	[°/100ft]	
0.00†	0.000	88.590	0.00	0.00	0.00	0.00	1698778.63	14354213.55	39°31'40.4660"N	80°47'34.8940"W	0.00	0.000	0.00	0.00	0.00	
25.50	0.000	88.590	25.50	0.00	0.00	0.00	1698778.63	14354213.55	39°31'40.4660"N	80°47'34.8940"W	0.00	0.000	0.00	0.00	0.00	
100.00	0.020	88.590	100.00	0.00	0.00	0.01	1698778.64	14354213.55	39°31'40.4660"N	80°47'34.8938"W	0.01	88.590	0.03	0.03	0.00	Gyrodata MS Gyro <17-1/2"> (100'-459')
200.00	0.390	95.960	200.00	-0.15	-0.03	0.37	1698779.00	14354213.52	39°31'40.4656"N	80°47'34.8893"W	0.37	95.356	0.37	0.37	7.37	
300.00	0.340	79.230	300.00	-0.34	-0.01	1.00	1698779.63	14354213.54	39°31'40.4658"N	80°47'34.8812"W	1.00	90.831	0.12	-0.05	-16.73	
400.00	0.460	58.460	399.99	-0.29	0.25	1.63	1698780.26	14354213.80	39°31'40.4684"N	80°47'34.8731"W	1.65	81.261	0.19	0.12	-20.77	
459.00	0.860	59.130	458.99	-0.14	0.60	2.21	1698780.84	14354214.15	39°31'40.4719"N	80°47'34.8657"W	2.29	74.791	0.68	0.68	1.14	
592.00	2.400	55.930	591.93	0.80	2.67	5.38	1698784.01	14354216.22	39°31'40.4923"N	80°47'34.8253"W	6.01	63.561	1.16	1.16	-2.41	APS EM <12-1/4"> (459')(592'-2588')
682.00	2.870	56.270	681.84	1.88	4.98	8.81	1698787.44	14354218.53	39°31'40.5150"N	80°47'34.7814"W	10.12	60.525	0.52	0.52	0.38	
772.00	3.590	75.890	771.70	2.23	6.92	13.42	1698792.04	14354220.47	39°31'40.5341"N	80°47'34.7225"W	15.10	62.724	1.45	0.80	21.80	
861.00	5.000	86.000	860.45	1.02	7.87	19.99	1698798.61	14354221.42	39°31'40.5433"N	80°47'34.6386"W	21.48	68.514	1.79	1.58	11.36	
951.00	6.360	92.360	950.00	-1.78	7.94	28.89	1698807.50	14354221.48	39°31'40.5438"N	80°47'34.5251"W	29.96	74.635	1.66	1.51	7.07	
1041.00	8.190	92.440	1039.27	-5.90	7.46	40.27	1698818.89	14354221.01	39°31'40.5388"N	80°47'34.3798"W	40.96	79.506	2.03	2.03	0.09	
1136.00	10.910	91.340	1132.95	-11.44	6.96	56.02	1698834.63	14354220.51	39°31'40.5335"N	80°47'34.1788"W	56.45	82.917	2.87	2.86	-1.16	
1231.00	13.050	86.050	1225.88	-17.27	7.49	75.71	1698854.31	14354221.04	39°31'40.5383"N	80°47'33.9275"W	76.08	84.351	2.53	2.25	-5.57	
1325.00	12.840	84.370	1317.49	-22.36	9.25	96.70	1698875.29	14354222.79	39°31'40.5552"N	80°47'33.6597"W	97.14	84.538	0.46	-0.22	-1.79	
1420.00	12.120	83.510	1410.24	-26.88	11.41	117.11	1698895.69	14354224.95	39°31'40.5761"N	80°47'33.3991"W	117.66	84.436	0.78	-0.76	-0.91	
1515.00	11.530	81.440	1503.23	-30.69	13.95	136.41	1698914.98	14354227.49	39°31'40.6008"N	80°47'33.1528"W	137.12	84.161	0.76	-0.62	-2.18	
1609.00	13.140	83.570	1595.05	-34.63	16.54	156.32	1698934.88	14354230.09	39°31'40.6259"N	80°47'32.8986"W	157.19	83.959	1.78	1.71	2.27	
1704.00	14.870	88.360	1687.23	-40.53	18.10	179.23	1698957.79	14354231.64	39°31'40.6409"N	80°47'32.6061"W	180.15	84.233	2.19	1.82	5.04	
1798.00	14.360	88.730	1778.19	-47.59	18.71	202.94	1698981.49	14354232.25	39°31'40.6462"N	80°47'32.3035"W	203.80	84.734	0.55	-0.54	0.39	
1893.00	13.870	86.920	1870.32	-54.21	19.58	226.09	1699004.63	14354233.12	39°31'40.6543"N	80°47'32.0081"W	226.94	85.051	0.69	-0.52	-1.91	
1987.00	14.370	91.210	1961.48	-61.25	19.94	249.01	1699027.54	14354233.48	39°31'40.6574"N	80°47'31.7156"W	249.80	85.422	1.23	0.53	4.56	
2082.00	13.540	88.710	2053.68	-68.61	19.94	271.91	1699050.43	14354233.48	39°31'40.6569"N	80°47'31.4233"W	272.64	85.806	1.08	-0.87	-2.63	
2176.00	13.190	87.750	2145.13	-74.97	20.61	293.63	1699072.14	14354234.15	39°31'40.6630"N	80°47'31.1461"W	294.35	85.985	0.44	-0.37	-1.02	
2270.00	13.040	87.660	2236.68	-81.02	21.46	314.94	1699093.44	14354235.00	39°31'40.6709"N	80°47'30.8741"W	315.67	86.102	0.16	-0.16	-0.10	
2365.00	12.900	86.240	2329.26	-86.80	22.59	336.23	1699114.73	14354236.14	39°31'40.6816"N	80°47'30.6024"W	336.99	86.156	0.37	-0.15	-1.49	
2460.00	13.400	90.220	2421.77	-93.12	23.25	357.82	1699136.31	14354236.79	39°31'40.6876"N	80°47'30.3269"W	358.57	86.283	1.09	0.53	4.19	
2554.00	12.630	86.750	2513.35	-99.42	23.79	378.97	1699157.45	14354237.33	39°31'40.6925"N	80°47'30.0569"W	379.72	86.408	1.17	-0.82	-3.69	
2588.00	12.340	85.810	2546.55	-101.33	24.26	386.31	1699164.78	14354237.81	39°31'40.6970"N	80°47'29.9633"W	387.07	86.406	1.04	-0.85	-2.76	



Actual Wellpath Report

Purple Unit 2H AWP Proj: 23809'

Page 3 of 12



REFERENCE WELLPATH IDENTIFICATION			
Operator	ANTERO RESOURCES CORPORATION	Well	Purple Unit 2H
Field	Tyler	API	47-095-02759-0000
Facility	Thin Air Pad	Wellbore	Purple Unit 2H AWB
Slot	Slot F		

WELLPATH DATA (269 stations)																
MD (ft)	Inclination (°)	Azimuth (°)	TVD (ft)	Vert Sect (ft)	North (ft)	East (ft)	Grid East (US ft)	Grid North (US ft)	Latitude	Longitude	Closure Dist (ft)	Closure Dir (°)	DLS (°/100ft)	Build Rate (°/100ft)	Turn Rate (°/100ft)	Comments
2707.00	11.400	80.470	2663.01	-106.42	27.14	410.59	1699189.06	14354240.68	39°31'40.7249"N	80°47'29.6533"W	411.49	86.218	1.21	-0.79	-4.49	APS EM <8-3/4' > (2588')(2707'-6125')
2806.00	12.750	82.140	2759.82	-110.06	30.26	431.06	1699209.52	14354243.79	39°31'40.7552"N	80°47'29.3920"W	432.12	85.985	1.41	1.36	1.69	
2904.00	13.140	89.780	2855.33	-115.65	31.78	452.91	1699231.36	14354245.31	39°31'40.7697"N	80°47'29.1130"W	454.03	85.987	1.79	0.40	7.80	
3002.00	13.270	87.810	2950.74	-122.40	32.25	475.29	1699253.73	14354245.79	39°31'40.7739"N	80°47'28.8274"W	476.39	86.118	0.48	0.13	-2.01	
3105.00	14.270	97.500	3050.79	-131.39	31.04	499.70	1699278.13	14354244.58	39°31'40.7614"N	80°47'28.5160"W	500.66	86.445	2.44	0.97	9.41	
3200.00	14.770	96.490	3142.76	-141.74	28.15	523.34	1699301.76	14354241.69	39°31'40.7322"N	80°47'28.2144"W	524.09	86.921	0.59	0.53	-1.08	
3296.00	14.460	91.100	3235.66	-151.04	26.53	547.48	1699325.89	14354240.07	39°31'40.7157"N	80°47'27.9064"W	548.12	87.225	1.45	-0.32	-5.61	
3393.00	14.640	96.490	3329.55	-160.39	24.92	571.77	1699350.17	14354238.46	39°31'40.6992"N	80°47'27.5964"W	572.31	87.505	1.41	0.19	5.56	
3491.00	14.870	93.340	3424.32	-170.41	22.78	596.63	1699375.02	14354236.32	39°31'40.6775"N	80°47'27.2793"W	597.06	87.813	0.85	0.23	-3.21	
3587.00	14.330	87.570	3517.22	-178.38	22.57	620.80	1699399.18	14354236.11	39°31'40.6749"N	80°47'26.9708"W	621.21	87.918	1.62	-0.56	-6.01	
3684.00	14.730	91.780	3611.12	-186.09	22.70	645.12	1699423.49	14354236.24	39°31'40.6756"N	80°47'26.6605"W	645.51	87.985	1.16	0.41	4.34	
3781.00	15.130	88.570	3704.85	-194.19	22.63	670.10	1699448.46	14354236.17	39°31'40.6743"N	80°47'26.3417"W	670.48	88.066	0.95	0.41	-3.31	
3878.00	14.420	84.800	3798.65	-200.80	24.04	694.78	1699473.13	14354237.58	39°31'40.6877"N	80°47'26.0266"W	695.20	88.018	1.23	-0.73	-3.89	
3976.00	12.840	87.840	3893.88	-206.78	25.56	717.82	1699496.16	14354239.09	39°31'40.7022"N	80°47'25.7326"W	718.27	87.961	1.77	-1.61	3.10	
4073.00	12.710	100.600	3988.50	-215.09	24.00	739.08	1699517.42	14354237.54	39°31'40.6863"N	80°47'25.4613"W	739.47	88.140	2.91	-0.13	13.15	
4169.00	12.930	98.970	4082.11	-225.27	20.38	760.07	1699538.40	14354233.92	39°31'40.6500"N	80°47'25.1935"W	760.34	88.464	0.44	0.23	-1.70	
4265.00	12.390	93.970	4175.78	-234.25	17.99	780.95	1699559.27	14354231.54	39°31'40.6260"N	80°47'24.9271"W	781.16	88.680	1.27	-0.56	-5.21	
4363.00	11.750	88.230	4271.61	-241.23	17.57	801.42	1699579.73	14354231.12	39°31'40.6213"N	80°47'24.6659"W	801.61	88.744	1.39	-0.65	-5.86	
4461.00	11.070	81.040	4367.68	-245.75	19.35	820.69	1699598.99	14354232.89	39°31'40.6384"N	80°47'24.4200"W	820.91	88.650	1.61	-0.69	-7.34	
4558.00	11.470	90.210	4462.82	-250.48	20.76	839.53	1699617.83	14354234.30	39°31'40.6520"N	80°47'24.1794"W	839.79	88.583	1.89	0.41	9.45	
4656.00	13.550	100.620	4558.50	-259.28	18.61	860.56	1699638.85	14354232.15	39°31'40.6302"N	80°47'23.9111"W	860.76	88.761	3.12	2.12	10.62	
4755.00	13.980	94.680	4654.66	-269.73	15.50	883.88	1699662.16	14354229.04	39°31'40.5989"N	80°47'23.6136"W	884.02	88.996	1.49	0.43	-6.00	
4851.00	13.910	87.250	4747.84	-277.53	15.10	906.97	1699685.24	14354228.65	39°31'40.5945"N	80°47'23.3190"W	907.09	89.046	1.87	-0.07	-7.74	
4950.00	13.790	80.640	4843.97	-282.75	17.59	930.50	1699708.76	14354231.14	39°31'40.6186"N	80°47'23.0186"W	930.66	88.917	1.60	-0.12	-6.68	
5048.00	13.820	84.290	4939.14	-287.30	20.66	953.67	1699731.92	14354234.20	39°31'40.6483"N	80°47'22.7228"W	953.89	88.759	0.89	0.03	3.72	
5145.00	13.800	93.660	5033.35	-294.33	21.07	976.74	1699754.98	14354234.61	39°31'40.6519"N	80°47'22.4283"W	976.97	88.764	2.30	-0.02	9.66	
5242.00	14.380	91.440	5127.43	-302.91	20.03	1000.33	1699778.56	14354233.57	39°31'40.6410"N	80°47'22.1273"W	1000.53	88.853	0.82	0.60	-2.29	
5339.00	14.470	85.620	5221.37	-310.08	20.65	1024.46	1699802.68	14354234.20	39°31'40.6466"N	80°47'21.8194"W	1024.66	88.845	1.50	0.09	-6.00	
5436.00	14.790	88.710	5315.23	-316.81	21.86	1048.92	1699827.13	14354235.40	39°31'40.6580"N	80°47'21.5072"W	1049.15	88.806	0.87	0.33	3.19	
5537.00	15.120	81.240	5412.82	-322.98	24.16	1074.83	1699853.03	14354237.70	39°31'40.6801"N	80°47'21.1765"W	1075.10	88.713	1.94	0.33	-7.40	



Actual Wellpath Report

Purple Unit 2H AWP Proj: 23809'

Page 4 of 12



REFERENCE WELLPATH IDENTIFICATION			
Operator	ANTERO RESOURCES CORPORATION	Well	Purple Unit 2H
Field	Tyler	API	47-095-02759-0000
Facility	Thin Air Pad	Wellbore	Purple Unit 2H AWB
Slot	Slot F		

WELLPATH DATA (269 stations) † = interpolated, ‡ = extrapolated station																
MD (ft)	Inclination [°]	Azimuth [°]	TVD (ft)	Vert Sect (ft)	North (ft)	East (ft)	Grid East (US ft)	Grid North (US ft)	Latitude	Longitude	Closure Dist (ft)	Closure Dir [°]	DLS [°/100ft]	Build Rate [°/100ft]	Turn Rate [°/100ft]	Comments
5635.00	13.170	77.650	5507.84	-326.45	28.49	1098.37	1699876.56	14354242.03	39°31'40.7224"N	80°47'20.8760"W	1098.74	88.514	2.18	-1.99	-3.66	
5733.00	13.740	85.370	5603.16	-330.54	31.82	1120.88	1699899.06	14354245.36	39°31'40.7547"N	80°47'20.5886"W	1121.33	88.374	1.92	0.58	7.88	
5831.00	14.210	96.180	5698.28	-338.46	31.46	1144.44	1699922.61	14354245.00	39°31'40.7507"N	80°47'20.2879"W	1144.87	88.425	2.70	0.48	11.03	
5929.00	14.470	94.460	5793.22	-348.36	29.22	1168.60	1699946.77	14354242.75	39°31'40.7279"N	80°47'19.9796"W	1168.97	88.568	0.51	0.27	-1.76	
6028.00	16.090	89.240	5888.73	-357.48	28.44	1194.66	1699972.81	14354241.97	39°31'40.7196"N	80°47'19.6471"W	1195.00	88.637	2.15	1.64	-5.27	
6125.00	17.490	82.640	5981.60	-364.52	30.48	1222.56	1700000.70	14354244.02	39°31'40.7392"N	80°47'19.2910"W	1222.94	88.572	2.44	1.44	-6.80	
6167.00	17.970	79.950	6021.60	-366.75	32.42	1235.20	1700013.33	14354245.96	39°31'40.7581"N	80°47'19.1297"W	1235.62	88.497	2.26	1.14	-6.40	BH AT Curve <8-1/2"> (6125')(6167'-23784')
6257.00	10.380	76.820	6108.80	-369.65	36.70	1256.79	1700034.92	14354250.23	39°31'40.7998"N	80°47'18.8539"W	1257.33	88.327	8.47	-8.43	-3.48	
6355.00	13.570	45.380	6204.75	-365.49	46.80	1273.59	1700051.72	14354260.33	39°31'40.8993"N	80°47'18.6392"W	1274.45	87.896	7.29	3.26	-32.08	
6452.00	17.190	19.430	6298.37	-349.24	68.34	1286.48	1700064.60	14354281.87	39°31'41.1119"N	80°47'18.4741"W	1288.30	86.959	7.92	3.73	-26.75	
6548.00	23.180	8.790	6388.47	-321.31	100.43	1294.10	1700072.21	14354313.94	39°31'41.4289"N	80°47'18.3759"W	1297.99	85.562	7.29	6.24	-11.08	
6646.00	27.940	357.810	6476.90	-282.16	142.48	1296.17	1700074.28	14354355.98	39°31'41.8444"N	80°47'18.3482"W	1303.98	83.727	6.83	4.86	-11.20	
6722.00†	31.812	350.244	6542.81	-245.29	180.04	1292.09	1700070.21	14354393.52	39°31'42.2157"N	80°47'18.3991"W	1304.58	82.067	7.10	5.09	-9.96	Sycamore: 6722' MD
6745.00	33.060	348.280	6562.22	-233.07	192.16	1289.79	1700067.91	14354405.64	39°31'42.3356"N	80°47'18.4282"W	1304.03	81.526	7.10	5.43	-8.54	
6841.00	39.120	346.100	6639.77	-176.86	247.25	1277.18	1700055.31	14354480.70	39°31'42.8803"N	80°47'18.5874"W	1300.90	79.044	6.45	6.31	-2.27	
6870.00†	42.100	345.413	6661.78	-158.04	265.55	1272.54	1700050.66	14354478.99	39°31'43.0612"N	80°47'18.6461"W	1299.95	78.213	10.39	10.28	-2.37	Middlesex: 6870' MD
6938.00	49.100	344.070	6709.33	-109.58	312.38	1259.73	1700037.85	14354525.80	39°31'43.5244"N	80°47'18.8082"W	1297.88	76.073	10.39	10.29	-1.97	
7026.00†	57.709	342.732	6761.75	-39.04	380.01	1239.52	1700017.65	14354593.40	39°31'44.1932"N	80°47'19.0641"W	1296.46	72.956	9.86	9.78	-1.52	Burkett: 7026' MD
7035.00	58.590	342.610	6766.49	-31.40	387.30	1237.24	1700015.38	14354600.70	39°31'44.2654"N	80°47'19.0929"W	1296.44	72.618	9.86	9.79	-1.35	
7088.00†	62.570	342.627	6792.52	14.74	431.35	1223.45	1700001.60	14354644.73	39°31'44.7011"N	80°47'19.2676"W	1297.27	70.579	7.51	7.51	0.03	Tully: 7088' MD
7133.00	65.950	342.640	6812.06	55.26	470.03	1211.36	1699989.50	14354683.40	39°31'45.0837"N	80°47'19.4208"W	1299.35	68.793	7.51	7.51	0.03	
7182.00	70.550	342.150	6830.22	100.75	513.40	1197.59	1699975.74	14354726.75	39°31'45.5126"N	80°47'19.5952"W	1303.00	66.795	9.43	9.39	-1.00	
7231.00	73.620	341.890	6845.29	147.36	557.74	1183.20	1699961.36	14354771.07	39°31'45.9512"N	80°47'19.7775"W	1308.07	64.762	6.29	6.27	-0.53	
7269.00†	76.170	342.324	6855.19	184.04	592.65	1171.93	1699950.09	14354805.97	39°31'46.2964"N	80°47'19.9203"W	1313.26	63.174	6.80	6.71	1.14	Marcellus POE: 7269' MD
7328.00	80.130	342.980	6867.30	241.75	647.76	1154.72	1699932.89	14354861.05	39°31'46.8415"N	80°47'20.1383"W	1324.00	60.709	6.80	6.71	1.11	
7427.00	87.600	344.140	6877.87	340.03	742.10	1126.89	1699905.07	14354955.35	39°31'47.7745"N	80°47'20.4907"W	1349.29	56.634	7.63	7.55	1.17	
7525.00	90.490	342.880	6879.51	437.93	836.04	1099.08	1699877.27	14355049.26	39°31'48.7036"N	80°47'20.8428"W	1380.92	52.741	3.22	2.95	-1.29	
7624.00	89.910	340.820	6879.16	536.92	930.11	1068.24	1699846.44	14355143.29	39°31'49.6341"N	80°47'21.2335"W	1416.42	48.954	2.16	-0.59	-2.08	
7722.00	90.150	341.100	6879.11	634.92	1022.75	1036.27	1699814.49	14355235.89	39°31'50.5504"N	80°47'21.6388"W	1455.98	45.376	0.38	0.24	0.29	
7818.00	90.090	340.980	6878.91	730.92	1113.54	1005.08	1699783.31	14355326.65	39°31'51.4484"N	80°47'22.0341"W	1500.05	42.069	0.14	-0.06	-0.13	



Actual Wellpath Report

Purple Unit 2H AWP Proj: 23809'

Page 5 of 12



REFERENCE WELLPATH IDENTIFICATION			
Operator	ANTERO RESOURCES CORPORATION	Well	Purple Unit 2H
Field	Tyler	API	47-095-02759-0000
Facility	Thin Air Pad	Wellbore	Purple Unit 2H AWB
Slot	Slot F		

WELLPATH DATA (269 stations)																
MD [ft]	Inclination [°]	Azimuth [°]	TVD [ft]	Vert Sect [ft]	North [ft]	East [ft]	Grid East [US ft]	Grid North [US ft]	Latitude	Longitude	Closure Dist [ft]	Closure Dir [°]	DLS [°/100ft]	Build Rate [°/100ft]	Turn Rate [°/100ft]	Comments
7913.00	90.150	340.940	6878.71	825.92	1203.34	974.09	1699752.33	14355416.41	39°31'52.3367"N	80°47'22.4270"W	1548.19	38.990	0.08	0.06	-0.04	
8011.00	90.220	341.300	6878.39	923.91	1296.07	942.38	1699720.63	14355509.10	39°31'53.2539"N	80°47'22.8289"W	1602.46	36.021	0.37	0.07	0.37	
8109.00	89.480	339.830	6878.65	1021.90	1388.48	909.77	1699688.04	14355601.48	39°31'54.1679"N	80°47'23.2423"W	1659.99	33.234	1.68	-0.76	-1.50	
8207.00	90.000	341.870	6879.10	1119.90	1481.05	877.62	1699655.90	14355694.01	39°31'55.0836"N	80°47'23.6498"W	1721.55	30.650	2.15	0.53	2.08	
8304.00	91.320	339.800	6877.98	1216.88	1572.66	845.78	1699624.08	14355785.59	39°31'55.9897"N	80°47'24.0534"W	1785.67	26.271	2.53	1.36	-2.13	
8402.00	89.780	340.750	6877.04	1314.86	1664.91	812.71	1699591.02	14355877.79	39°31'56.9021"N	80°47'24.4728"W	1852.68	26.019	1.85	-1.57	0.97	
8501.00	89.910	340.380	6877.31	1413.85	1758.26	779.77	1699558.09	14355971.11	39°31'57.8256"N	80°47'24.8904"W	1923.42	23.917	0.40	0.13	-0.37	
8598.00	90.120	340.870	6877.28	1510.84	1849.77	747.59	1699525.92	14356062.58	39°31'58.7307"N	80°47'25.2984"W	1995.13	22.006	0.55	0.22	0.51	
8695.00	89.780	341.080	6877.37	1607.84	1941.47	715.97	1699494.32	14356154.25	39°31'59.6377"N	80°47'25.6992"W	2069.28	20.243	0.41	-0.35	0.22	
8794.00	90.430	341.040	6877.18	1706.84	2035.11	683.84	1699462.20	14356247.85	39°32'0.5639"N	80°47'26.1066"W	2146.93	18.573	0.66	0.66	-0.04	
8891.00	89.820	339.660	6876.97	1803.83	2126.46	651.22	1699429.59	14356339.16	39°32'1.4675"N	80°47'26.5201"W	2223.94	17.027	1.56	-0.63	-1.42	
8988.00	90.060	341.470	6877.07	1900.82	2217.93	618.95	1699397.33	14356430.60	39°32'2.3723"N	80°47'26.9293"W	2302.67	15.593	1.88	0.25	1.87	
9084.00	89.350	340.070	6877.57	1996.81	2308.57	587.33	1699365.72	14356521.20	39°32'3.2688"N	80°47'27.3302"W	2382.11	14.274	1.64	-0.74	-1.46	
9182.00	90.520	341.270	6877.68	2094.80	2401.04	554.89	1699333.30	14356613.63	39°32'4.1835"N	80°47'27.7414"W	2464.33	13.013	1.71	1.19	1.22	
9280.00	90.220	341.110	6877.05	2192.80	2493.80	523.29	1699301.72	14356706.36	39°32'5.1010"N	80°47'28.1420"W	2548.12	11.851	0.35	-0.31	-0.16	
9377.00	89.940	342.140	6876.91	2289.79	2585.86	492.72	1699271.15	14356798.38	39°32'6.0115"N	80°47'28.5295"W	2632.38	10.788	1.10	-0.29	1.06	
9476.00	90.120	341.250	6876.86	2388.79	2679.85	461.62	1699240.07	14356892.33	39°32'6.9411"N	80°47'28.9236"W	2719.32	9.774	0.92	0.18	-0.90	
9572.00	91.350	341.310	6875.63	2484.78	2770.76	430.82	1699209.27	14356983.21	39°32'7.8404"N	80°47'29.3141"W	2804.05	8.838	1.28	1.28	0.06	
9670.00	90.180	341.030	6874.32	2582.77	2863.50	399.19	1699177.66	14357075.91	39°32'8.7577"N	80°47'29.7150"W	2891.20	7.936	1.23	-1.19	-0.29	
9767.00	90.680	341.460	6873.59	2679.77	2955.35	368.00	1699146.49	14357167.72	39°32'9.6882"N	80°47'30.1103"W	2978.17	7.098	0.68	0.52	0.44	
9864.00	90.710	341.500	6872.41	2776.76	3047.32	337.19	1699115.69	14357259.66	39°32'10.5758"N	80°47'30.5008"W	3065.92	6.314	0.05	0.03	0.04	
9962.00	90.460	342.180	6871.41	2874.75	3140.43	306.65	1699085.16	14357352.73	39°32'11.4968"N	80°47'30.8879"W	3155.37	5.577	0.74	-0.26	0.69	
10060.00	90.180	341.290	6870.87	2972.74	3233.49	275.94	1699054.46	14357445.76	39°32'12.4172"N	80°47'31.2772"W	3245.25	4.878	0.95	-0.29	-0.91	
10158.00	90.030	341.390	6870.69	3070.74	3326.34	244.58	1699023.12	14357538.57	39°32'13.3356"N	80°47'31.6746"W	3335.32	4.205	0.18	-0.15	0.10	
10256.00	89.880	341.000	6870.76	3168.74	3419.11	212.99	1698991.54	14357631.30	39°32'14.2532"N	80°47'32.0751"W	3425.74	3.565	0.43	-0.15	-0.40	
10355.00	90.430	340.010	6870.50	3267.73	3512.43	179.95	1698958.51	14357724.59	39°32'15.1763"N	80°47'32.4940"W	3517.04	2.933	1.14	0.56	-1.00	
10451.00	90.340	341.260	6869.85	3363.72	3603.00	148.12	1698926.69	14357815.11	39°32'16.0721"N	80°47'32.8976"W	3606.04	2.354	1.31	-0.09	1.30	
10548.00	89.910	340.860	6869.64	3460.72	3694.75	116.64	1698895.22	14357906.83	39°32'16.9795"N	80°47'33.2968"W	3696.59	1.808	0.61	-0.44	-0.41	
10644.00	89.970	341.630	6869.74	3556.72	3785.65	85.77	1698864.37	14357997.69	39°32'17.8787"N	80°47'33.6881"W	3786.62	1.298	0.80	0.06	0.80	
10743.00	90.180	341.520	6869.61	3655.72	3879.57	54.48	1698833.09	14358091.58	39°32'18.8077"N	80°47'34.0847"W	3879.96	0.805	0.24	0.21	-0.11	



Actual Wellpath Report

Purple Unit 2H AWP Proj: 23809'
Page 6 of 12



REFERENCE WELLPATH IDENTIFICATION			
Operator	ANTERO RESOURCES CORPORATION	Well	Purple Unit 2H
Field	Tyler	API	47-095-02759-0000
Facility	Thin Air Pad	Wellbore	Purple Unit 2H AWB
Slot	Slot F		

WELLPATH DATA (269 stations)																
MD	Inclination	Azimuth	TVD	Vert Sect	North	East	Grid East	Grid North	Latitude	Longitude	Closure Dist	Closure Dir	DLS	Build Rate	Turn Rate	Comments
[ft]	[°]	[°]	[ft]	[ft]	[ft]	[ft]	[US ft]	[US ft]			[ft]	[°]	["/100ft]	["/100ft]	["/100ft]	
10840.00	89.940	341.920	6869.51	3752.71	3971.68	24.06	1698802.68	14358183.65	39°32'19.7186"N	80°47'34.4703"W	3971.75	0.347	0.48	-0.25	0.41	
10938.00	90.060	341.530	6869.51	3850.71	4064.73	-6.67	1698771.96	14358276.67	39°32'20.6390"N	80°47'34.8598"W	4064.74	359.906	0.42	0.12	-0.40	
11036.00	90.000	341.110	6869.46	3948.71	4157.57	-38.06	1698740.59	14358369.47	39°32'21.5573"N	80°47'35.2577"W	4157.75	359.476	0.43	-0.06	-0.43	
11135.00	90.180	341.790	6869.30	4047.71	4251.43	-69.55	1698709.10	14358463.29	39°32'22.4856"N	80°47'35.6570"W	4252.00	359.063	0.71	0.18	0.69	
11231.00	90.180	341.090	6869.00	4143.71	4342.43	-100.11	1698678.56	14358554.25	39°32'23.3857"N	80°47'36.0443"W	4343.59	358.679	0.73	0.00	-0.73	
11328.00	90.000	340.390	6868.85	4240.70	4434.00	-132.11	1698646.58	14358645.79	39°32'24.2915"N	80°47'36.4501"W	4435.97	358.293	0.75	-0.19	-0.72	
11425.00	90.490	341.790	6868.43	4337.70	4525.77	-163.54	1698615.15	14358737.51	39°32'25.1991"N	80°47'36.8486"W	4528.72	357.930	1.53	0.51	1.44	
11522.00	90.650	341.630	6867.47	4434.69	4617.86	-193.98	1698584.73	14358829.57	39°32'26.1100"N	80°47'37.2344"W	4621.93	357.595	0.23	0.16	-0.16	
11621.00	89.660	341.310	6867.20	4533.69	4711.73	-225.44	1698553.28	14358923.40	39°32'27.0384"N	80°47'37.6333"W	4717.12	357.261	1.05	-1.00	-0.32	
11718.00	89.110	341.290	6868.24	4630.68	4803.60	-256.54	1698522.19	14359015.24	39°32'27.9471"N	80°47'38.0275"W	4810.45	356.943	0.57	-0.57	-0.02	
11816.00	90.400	341.420	6868.66	4728.68	4896.45	-287.87	1698490.87	14359108.05	39°32'28.8655"N	80°47'38.4247"W	4904.91	356.635	1.32	1.32	0.13	
11914.00	90.180	340.820	6868.16	4826.68	4989.18	-319.58	1698459.18	14359200.74	39°32'29.7827"N	80°47'38.8268"W	4999.40	356.335	0.65	-0.22	-0.61	
12012.00	90.180	342.090	6867.86	4924.67	5082.09	-350.75	1698428.02	14359293.62	39°32'30.7016"N	80°47'39.2219"W	5094.18	356.052	1.30	0.00	1.30	
12109.00	90.520	341.120	6867.26	5021.67	5174.13	-381.36	1698397.42	14359385.62	39°32'31.6120"N	80°47'39.6099"W	5188.16	355.785	1.06	0.35	-1.00	
12206.00	89.540	338.550	6867.21	5118.63	5265.17	-414.79	1698364.00	14359476.63	39°32'32.5126"N	80°47'40.0341"W	5281.49	355.496	2.84	-1.01	-2.65	
12304.00	90.490	340.820	6867.19	5216.59	5357.07	-448.81	1698329.99	14359568.49	39°32'33.4216"N	80°47'40.4656"W	5375.84	355.211	2.51	0.97	2.32	
12402.00	90.250	340.030	6866.55	5314.57	5449.41	-481.65	1698297.17	14359660.79	39°32'34.3349"N	80°47'40.8820"W	5470.65	354.949	0.84	-0.24	-0.81	
12499.00	90.000	340.630	6866.34	5411.56	5540.74	-514.30	1698264.54	14359752.09	39°32'35.2383"N	80°47'41.2962"W	5564.56	354.697	0.67	-0.26	0.62	
12596.00	90.150	340.600	6866.22	5508.56	5632.25	-546.49	1698232.35	14359843.55	39°32'36.1434"N	80°47'41.7045"W	5658.70	354.458	0.16	0.15	-0.03	
12693.00	90.370	341.170	6865.78	5605.55	5723.90	-578.26	1698200.60	14359935.17	39°32'37.0499"N	80°47'42.1072"W	5753.03	354.231	0.63	0.23	0.59	
12791.00	89.450	340.230	6865.93	5703.55	5816.39	-610.65	1698168.23	14360027.62	39°32'37.9647"N	80°47'42.5180"W	5848.35	354.007	1.34	-0.94	-0.96	
12890.00	90.220	341.370	6866.22	5802.54	5909.88	-643.20	1698135.68	14360121.07	39°32'38.8895"N	80°47'42.9309"W	5944.78	353.789	1.39	0.78	1.15	
12988.00	91.080	341.880	6865.10	5900.53	6002.87	-674.09	1698104.80	14360214.03	39°32'39.8093"N	80°47'43.3225"W	6040.60	353.593	1.02	0.88	0.52	
13087.00	90.370	341.190	6863.85	5999.52	6096.77	-705.45	1698073.46	14360307.89	39°32'40.7379"N	80°47'43.7200"W	6137.44	353.400	1.00	-0.72	-0.70	
13185.00	90.920	341.250	6862.75	6097.51	6189.54	-736.99	1698041.93	14360400.63	39°32'41.6556"N	80°47'44.1200"W	6233.27	353.210	0.56	0.56	0.06	
13284.00	90.310	341.240	6861.68	6196.51	6283.28	-768.82	1698010.11	14360494.33	39°32'42.5827"N	80°47'44.5236"W	6330.14	353.024	0.62	-0.62	-0.01	
13383.00	90.620	341.840	6860.88	6295.50	6377.18	-800.17	1697978.78	14360588.19	39°32'43.5115"N	80°47'44.9210"W	6427.19	352.848	0.68	0.31	0.61	
13481.00	90.030	342.110	6860.33	6393.49	6470.37	-830.49	1697948.47	14360681.35	39°32'44.4332"N	80°47'45.3054"W	6523.45	352.686	0.66	-0.60	0.28	
13578.00	89.660	339.920	6860.59	6490.48	6562.09	-862.05	1697916.93	14360773.03	39°32'45.3404"N	80°47'45.7055"W	6618.47	352.516	2.29	-0.38	-2.26	
13677.00	90.340	341.460	6860.59	6589.48	6655.52	-894.78	1697884.20	14360866.42	39°32'46.2645"N	80°47'46.1207"W	6715.40	352.343	1.70	0.69	1.56	



Actual Wellpath Report

Purple Unit 2H AWP Proj: 23809'
Page 7 of 12



REFERENCE WELLPATH IDENTIFICATION			
Operator	ANTERO RESOURCES CORPORATION	Well	Purple Unit 2H
Field	Tyler	API	47-095-02759-0000
Facility	Thin Air Pad	Wellbore	Purple Unit 2H AWB
Slot	Slot F		

WELLPATH DATA (269 stations)																
MD [ft]	Inclination [°]	Azimuth [°]	TVD [ft]	Vert Sect [ft]	North [ft]	East [ft]	Grid East [US ft]	Grid North [US ft]	Latitude	Longitude	Closure Dist [ft]	Closure Dir [°]	DLS ["/100ft]	Build Rate ["/100ft]	Turn Rate ["/100ft]	Comments
13775.00	89.850	340.390	6860.43	6687.47	6748.13	-926.81	1697852.19	14360959.00	39°32'47.1805"N	80°47'46.5268"W	6811.48	352.180	1.20	-0.50	-1.09	
13872.00	89.690	340.080	6860.81	6784.46	6839.42	-959.61	1697819.40	14361050.25	39°32'48.0835"N	80°47'46.9429"W	6906.41	352.013	0.36	-0.16	-0.32	
13971.00	89.570	340.350	6861.45	6883.44	6932.57	-993.12	1697785.90	14361143.36	39°32'49.0049"N	80°47'47.3680"W	7003.35	351.848	0.30	-0.12	0.27	
14069.00	90.770	342.200	6861.16	6981.43	7025.38	-1024.58	1697754.46	14361236.13	39°32'49.9228"N	80°47'47.7669"W	7099.70	351.702	2.25	1.22	1.89	
14165.00	90.000	341.310	6860.52	7077.43	7116.55	-1054.63	1697724.42	14361327.27	39°32'50.8245"N	80°47'48.1479"W	7194.27	351.570	1.23	-0.80	-0.93	
14263.00	89.910	340.830	6860.60	7175.42	7209.25	-1086.43	1697692.64	14361419.93	39°32'51.7414"N	80°47'48.5511"W	7290.65	351.430	0.50	-0.09	-0.49	
14361.00	90.580	341.070	6860.18	7273.42	7301.88	-1118.41	1697660.66	14361512.52	39°32'52.6576"N	80°47'48.9567"W	7387.04	351.292	0.73	0.68	0.24	
14459.00	90.250	340.770	6859.47	7371.42	7394.49	-1150.45	1697628.64	14361605.10	39°32'53.5737"N	80°47'49.3630"W	7483.45	351.157	0.46	-0.34	-0.31	
14557.00	89.940	341.020	6859.30	7469.42	7487.10	-1182.52	1697596.58	14361697.66	39°32'54.4896"N	80°47'49.7698"W	7579.90	351.025	0.41	-0.32	0.26	
14654.00	89.540	340.670	6859.74	7566.41	7578.72	-1214.35	1697564.76	14361789.26	39°32'55.3959"N	80°47'50.1734"W	7675.40	350.897	0.55	-0.41	-0.36	
14751.00	89.630	340.870	6860.45	7663.41	7670.31	-1246.30	1697532.83	14361880.81	39°32'56.3018"N	80°47'50.5786"W	7770.90	350.771	0.23	0.09	0.21	
14848.00	92.280	342.440	6858.83	7760.38	7762.36	-1276.82	1697502.32	14361972.81	39°32'57.2122"N	80°47'50.9656"W	7866.67	350.659	3.18	2.73	1.62	
14947.00	92.860	342.520	6854.39	7859.26	7856.67	-1306.59	1697472.56	14362067.09	39°32'58.1449"N	80°47'51.3430"W	7964.57	350.558	0.59	0.59	0.08	
15045.00	92.400	342.630	6849.89	7957.12	7950.07	-1335.91	1697443.25	14362160.46	39°32'59.0687"N	80°47'51.7145"W	8061.53	350.461	0.48	-0.47	0.11	
15108.00	90.860	341.810	6848.10	8020.09	8010.04	-1355.14	1697424.03	14362220.40	39°32'59.6618"N	80°47'51.9583"W	8123.86	350.398	2.77	-2.44	-1.30	
15141.00	89.880	341.640	6847.89	8053.08	8041.37	-1365.48	1697413.69	14362251.72	39°32'59.9717"N	80°47'52.0895"W	8156.48	350.363	3.01	-2.97	-0.52	
15188.00	90.280	341.480	6847.82	8100.08	8085.96	-1380.35	1697398.83	14362296.29	39°33'0.4127"N	80°47'52.2780"W	8202.93	350.312	0.92	0.85	-0.34	
15237.00	90.800	341.180	6847.36	8149.08	8132.38	-1396.04	1697383.15	14362342.69	39°33'0.8718"N	80°47'52.4769"W	8251.33	350.259	1.23	1.06	-0.61	
15284.00	92.620	341.360	6845.96	8196.06	8176.87	-1411.12	1697368.07	14362387.16	39°33'1.3118"N	80°47'52.6682"W	8297.73	350.209	3.89	3.87	0.38	
15334.00	92.370	341.190	6843.78	8246.01	8224.17	-1427.16	1697352.04	14362434.45	39°33'1.7798"N	80°47'52.8716"W	8347.08	350.155	0.60	-0.50	-0.34	
15381.00	92.370	340.790	6841.84	8292.97	8268.57	-1442.45	1697336.75	14362478.83	39°33'2.2189"N	80°47'53.0656"W	8393.45	350.104	0.85	0.00	-0.85	
15430.00	92.400	341.290	6839.80	8341.93	8314.87	-1458.36	1697320.85	14362525.11	39°33'2.6769"N	80°47'53.2673"W	8441.80	350.052	1.02	0.06	1.02	
15478.00	92.340	341.160	6837.81	8389.89	8360.28	-1473.80	1697305.42	14362570.50	39°33'3.1260"N	80°47'53.4631"W	8489.19	350.002	0.30	-0.13	-0.27	
15526.00	92.550	341.380	6835.77	8437.84	8405.70	-1489.20	1697290.03	14362615.90	39°33'3.5752"N	80°47'53.6583"W	8536.59	349.953	0.63	0.44	0.46	
15574.00	91.290	341.690	6834.16	8485.81	8451.20	-1504.39	1697274.84	14362661.39	39°33'4.0252"N	80°47'53.8510"W	8584.05	349.907	2.70	-2.62	0.65	
15624.00	90.890	341.150	6833.21	8535.80	8498.58	-1520.32	1697258.92	14362708.75	39°33'4.4939"N	80°47'54.0530"W	8633.50	349.858	1.34	-0.80	-1.08	
15672.00	91.850	341.180	6832.06	8583.79	8544.00	-1535.81	1697243.43	14362754.15	39°33'4.9431"N	80°47'54.2495"W	8680.94	349.810	2.00	2.00	0.06	
15721.00	91.970	341.500	6830.43	8632.76	8590.40	-1551.48	1697227.77	14362800.53	39°33'5.4020"N	80°47'54.4482"W	8729.38	349.762	0.70	0.24	0.65	
15769.00	90.830	341.170	6829.25	8680.75	8635.86	-1566.84	1697212.42	14362845.97	39°33'5.8517"N	80°47'54.6429"W	8776.85	349.716	2.47	-2.38	-0.69	
15818.00	90.000	341.210	6828.90	8729.75	8682.24	-1582.63	1697196.63	14362892.34	39°33'6.3104"N	80°47'54.8433"W	8825.31	349.669	1.70	-1.69	0.08	



Actual Wellpath Report

Purple Unit 2H AWP Proj: 23809'
Page 8 of 12



REFERENCE WELLPATH IDENTIFICATION			
Operator	ANTERO RESOURCES CORPORATION	Well	Purple Unit 2H
Field	Tyler	API	47-095-02759-0000
Facility	Thin Air Pad	Wellbore	Purple Unit 2H AWB
Slot	Slot F		

WELLPATH DATA (269 stations)																
MD (ft)	Inclination (°)	Azimuth (°)	TVD (ft)	Vert Sect (ft)	North (ft)	East (ft)	Grid East (US ft)	Grid North (US ft)	Latitude	Longitude	Closure Dist (ft)	Closure Dir (°)	DLS (°/100ft)	Build Rate (°/100ft)	Turn Rate (°/100ft)	Comments
15867.00	88.950	341.210	6829.35	8778.74	8728.63	-1598.42	1697180.85	14362938.70	39°33'6.7692"N	80°47'55.0434"W	8873.77	349.623	2.14	-2.14	0.00	
15916.00	86.920	341.200	6831.11	8827.71	8774.98	-1614.19	1697165.08	14362985.04	39°33'7.2277"N	80°47'55.2435"W	8922.22	349.577	4.14	-4.14	-0.02	
15965.00	87.010	341.050	6833.71	8876.64	8821.28	-1630.02	1697149.26	14363031.32	39°33'7.6856"N	80°47'55.4443"W	8970.62	349.531	0.36	0.18	-0.31	
16014.00	87.070	341.760	6836.24	8925.57	8867.66	-1645.63	1697133.66	14363077.68	39°33'8.1444"N	80°47'55.6421"W	9019.06	349.487	1.45	0.12	1.45	
16061.00	86.890	341.370	6838.71	8972.51	8912.19	-1660.47	1697118.82	14363122.19	39°33'8.5847"N	80°47'55.8304"W	9065.55	349.446	0.91	-0.38	-0.83	
16109.00	86.460	341.220	6841.50	9020.43	8957.58	-1675.83	1697103.46	14363167.56	39°33'9.0337"N	80°47'56.0252"W	9112.99	349.403	0.95	-0.90	-0.31	
16156.00	88.490	342.050	6843.57	9067.38	9002.14	-1690.63	1697088.68	14363212.10	39°33'9.4744"N	80°47'56.2128"W	9159.51	349.364	4.67	4.32	1.77	
16207.00	88.340	341.510	6844.98	9118.35	9050.56	-1706.57	1697072.74	14363260.51	39°33'9.9533"N	80°47'56.4149"W	9210.05	349.322	1.10	-0.29	-1.06	
16254.00	88.770	341.090	6846.17	9165.34	9095.07	-1721.63	1697057.68	14363304.99	39°33'10.3935"N	80°47'56.6060"W	9256.58	349.281	1.28	0.91	-0.89	
16304.00	88.710	341.420	6847.26	9215.33	9142.40	-1737.69	1697041.63	14363352.31	39°33'10.8617"N	80°47'56.8097"W	9306.08	349.238	0.67	-0.12	0.66	
16351.00	88.370	341.530	6848.46	9262.31	9186.95	-1752.62	1697026.70	14363396.84	39°33'11.3023"N	80°47'56.9990"W	9352.63	349.199	0.76	-0.72	0.23	
16402.00	88.740	341.180	6849.75	9313.30	9235.26	-1768.92	1697010.41	14363445.13	39°33'11.7801"N	80°47'57.2057"W	9403.14	349.157	1.00	0.73	-0.69	
16501.00	88.650	341.160	6852.00	9412.27	9328.94	-1800.87	1696978.48	14363538.77	39°33'12.7067"N	80°47'57.6109"W	9501.17	349.074	0.09	-0.09	-0.02	
16598.00	88.860	341.340	6854.11	9509.25	9420.77	-1832.04	1696947.32	14363630.57	39°33'13.6149"N	80°47'58.0062"W	9597.25	348.995	0.29	0.22	0.19	
16696.00	88.800	341.740	6856.11	9607.22	9513.71	-1863.06	1696916.31	14363723.47	39°33'14.5342"N	80°47'58.3997"W	9694.41	348.920	0.41	-0.06	0.41	
16795.00	89.350	341.830	6857.71	9706.21	9607.73	-1894.01	1696885.38	14363817.46	39°33'15.4641"N	80°47'58.7920"W	9792.64	348.848	0.56	0.56	0.09	
16892.00	89.850	341.270	6858.39	9803.20	9699.74	-1924.70	1696854.69	14363909.43	39°33'16.3742"N	80°47'59.1813"W	9888.86	348.777	0.77	0.52	-1.58	
16990.00	90.060	341.410	6858.46	9901.20	9792.59	-1956.06	1696823.35	14364002.24	39°33'17.2925"N	80°47'59.5790"W	9986.04	348.704	0.26	0.21	0.14	
17087.00	90.430	341.320	6858.05	9998.20	9884.51	-1987.05	1696792.37	14364094.12	39°33'18.2016"N	80°47'59.9721"W	10082.25	348.633	0.39	0.38	-0.09	
17185.00	90.250	340.760	6857.47	10096.20	9977.19	-2018.89	1696760.54	14364186.76	39°33'19.1183"N	80°48'0.3759"W	10179.40	348.561	0.60	-0.18	-0.57	
17282.00	90.620	341.760	6856.73	10193.19	10069.04	-2050.06	1696729.39	14364278.58	39°33'20.0268"N	80°48'0.7712"W	10275.62	348.492	1.10	0.38	1.03	
17380.00	90.280	340.850	6855.96	10291.19	10161.87	-2081.47	1696697.99	14364371.37	39°33'20.9449"N	80°48'1.1696"W	10372.85	348.424	0.99	-0.35	-0.93	
17476.00	90.180	339.450	6855.58	10387.17	10252.16	-2114.06	1696665.41	14364461.63	39°33'21.8380"N	80°48'1.5832"W	10467.86	348.349	1.46	-0.10	-1.46	
17573.00	89.970	338.890	6855.45	10484.11	10342.82	-2148.56	1696630.93	14364552.25	39°33'22.7347"N	80°48'2.0210"W	10563.63	348.265	0.62	-0.22	-0.58	
17670.00	90.120	339.970	6855.37	10581.06	10433.63	-2182.64	1696596.86	14364643.03	39°33'23.6330"N	80°48'2.4535"W	10659.48	348.185	1.12	0.15	1.11	
17768.00	90.280	340.870	6855.03	10679.04	10525.96	-2215.48	1696564.03	14364735.32	39°33'24.5463"N	80°48'2.8702"W	10756.59	348.114	0.93	0.16	0.92	
17866.00	90.490	341.320	6854.37	10777.04	10618.68	-2247.23	1696532.30	14364828.00	39°33'25.4633"N	80°48'3.2729"W	10853.86	348.051	0.51	0.21	0.46	
17963.00	90.000	340.620	6853.96	10874.04	10710.37	-2278.86	1696500.68	14364919.66	39°33'26.3702"N	80°48'3.6741"W	10950.13	347.988	0.88	-0.51	-0.72	
18060.00	90.580	340.820	6853.47	10971.03	10801.93	-2310.88	1696468.67	14365011.18	39°33'27.2756"N	80°48'4.0805"W	11046.35	347.925	0.63	0.60	0.21	
18159.00	90.620	340.810	6852.43	11070.03	10895.43	-2343.42	1696436.15	14365104.64	39°33'28.2006"N	80°48'4.4932"W	11144.59	347.862	0.04	0.04	-0.01	



Actual Wellpath Report

Purple Unit 2H AWP Proj: 23809'

Page 9 of 12



REFERENCE WELLPATH IDENTIFICATION			
Operator	ANTERO RESOURCES CORPORATION	Well	Purple Unit 2H
Field	Tyler	API	47-095-02759-0000
Facility	Thin Air Pad	Wellbore	Purple Unit 2H AWB
Slot	Slot F		

WELLPATH DATA (269 stations)																	
MD (ft)	Inclination (°)	Azimuth (°)	TVD (ft)	Vert Sect (ft)	North (ft)	East (ft)	Grid East (US ft)	Grid North (US ft)	Latitude	Longitude	Closure Dist (ft)	Closure Dir (°)	DLS (°/100ft)	Build Rate (°/100ft)	Turn Rate (°/100ft)	Comments	
18255.00	90.400	340.960	6851.58	11166.02	10986.13	-2374.85	1696404.72	14365195.31	39°33'29.0977"N	80°48'4.8919"W	11239.88	347.802	0.28	-0.23	0.16		
18352.00	90.180	341.280	6851.08	11263.02	11077.91	-2406.24	1696373.35	14365287.05	39°33'30.0055"N	80°48'5.2901"W	11336.23	347.745	0.40	-0.23	0.33		
18449.00	90.180	340.820	6850.78	11360.02	11169.65	-2437.74	1696341.86	14365378.76	39°33'30.9129"N	80°48'5.6897"W	11432.57	347.688	0.47	0.00	-0.47		
18546.00	90.550	341.400	6850.16	11457.01	11261.43	-2469.14	1696310.47	14365470.49	39°33'31.8206"N	80°48'6.0880"W	11528.94	347.633	0.71	0.38	0.60		
18645.00	90.370	341.240	6849.37	11556.01	11355.21	-2500.85	1696278.78	14365564.24	39°33'32.7481"N	80°48'6.4902"W	11627.34	347.580	0.24	-0.18	-0.16		
18742.00	90.150	340.820	6848.93	11653.01	11446.94	-2532.38	1696247.26	14365655.93	39°33'33.6554"N	80°48'6.8902"W	11723.71	347.526	0.49	-0.23	-0.43		
18840.00	90.680	341.510	6848.22	11751.01	11539.69	-2564.02	1696215.63	14365748.64	39°33'34.5728"N	80°48'7.2915"W	11821.11	347.473	0.89	0.54	0.70		
18938.00	90.400	341.420	6847.29	11849.00	11632.60	-2595.17	1696184.49	14365841.52	39°33'35.4917"N	80°48'7.6867"W	11918.57	347.424	0.30	-0.29	-0.09		
19033.00	90.620	341.180	6846.45	11944.00	11722.58	-2625.63	1696154.05	14365931.46	39°33'36.3817"N	80°48'8.0730"W	12013.03	347.375	0.34	0.23	-0.25		
19132.00	90.490	340.980	6845.49	12042.99	11816.23	-2657.72	1696121.96	14366025.07	39°33'37.3079"N	80°48'8.4802"W	12111.43	347.324	0.24	-0.13	-0.20		
19230.00	90.310	341.250	6844.80	12140.99	11908.95	-2689.44	1696090.26	14366117.76	39°33'38.2250"N	80°48'8.8826"W	12208.86	347.274	0.33	-0.18	0.28		
19329.00	90.400	341.160	6844.19	12239.99	12002.67	-2721.34	1696058.37	14366211.44	39°33'39.1519"N	80°48'9.2872"W	12307.30	347.225	0.13	0.09	-0.09		
19427.00	90.550	341.230	6843.38	12337.98	12095.43	-2752.93	1696026.80	14366304.17	39°33'40.0694"N	80°48'9.6879"W	12404.76	347.178	0.17	0.15	0.07		
19525.00	90.340	341.080	6842.62	12435.98	12188.18	-2784.58	1695995.16	14366396.88	39°33'40.9867"N	80°48'10.0895"W	12502.22	347.131	0.26	-0.21	-0.15		
19623.00	90.310	341.030	6842.06	12533.98	12280.87	-2816.40	1695963.35	14366489.53	39°33'41.9035"N	80°48'10.4931"W	12599.68	347.084	0.06	-0.03	-0.05		
19721.00	90.490	340.930	6841.38	12631.97	12373.52	-2848.34	1695931.43	14366582.14	39°33'42.8199"N	80°48'10.8983"W	12697.12	347.037	0.21	0.18	-0.10		
19818.00	90.800	341.360	6840.29	12728.97	12465.30	-2879.68	1695900.10	14366673.89	39°33'43.7277"N	80°48'11.2960"W	12793.61	346.992	0.55	0.32	0.44		
19917.00	90.180	342.030	6839.44	12827.96	12559.29	-2910.77	1695869.02	14366767.84	39°33'44.6573"N	80°48'11.6903"W	12892.18	346.951	0.92	-0.63	0.68		
20013.00	90.370	342.000	6838.98	12923.95	12650.60	-2940.41	1695839.39	14366859.11	39°33'45.5603"N	80°48'12.0662"W	12987.83	346.915	0.20	0.20	-0.03		
20110.00	90.280	342.160	6838.43	13020.94	12742.89	-2970.26	1695809.55	14366951.37	39°33'46.4731"N	80°48'12.4447"W	13084.48	346.879	0.19	-0.09	0.16		
20207.00	90.460	341.910	6837.80	13117.93	12835.16	-3000.18	1695779.65	14367043.60	39°33'47.3857"N	80°48'12.8242"W	13181.14	346.844	0.32	0.19	-0.26		
20305.00	90.620	342.480	6836.88	13215.91	12928.46	-3030.14	1695749.69	14367136.87	39°33'48.3084"N	80°48'13.2042"W	13278.81	346.809	0.60	0.16	0.58		
20402.00	90.550	342.290	6835.89	13312.88	13020.91	-3059.49	1695720.35	14367229.28	39°33'49.2228"N	80°48'13.5764"W	13375.52	346.777	0.21	-0.07	-0.20		
20500.00	90.550	342.030	6834.95	13410.87	13114.19	-3089.52	1695690.34	14367322.52	39°33'50.1453"N	80°48'13.9571"W	13473.20	346.744	0.27	0.00	-0.27		
20598.00	89.970	342.560	6834.50	13508.85	13207.55	-3119.32	1695660.55	14367415.84	39°33'51.0686"N	80°48'14.3350"W	13570.91	346.712	0.80	-0.59	0.54		
20696.00	89.910	342.230	6834.60	13606.83	13300.96	-3148.96	1695630.92	14367509.21	39°33'51.9925"N	80°48'14.7109"W	13668.63	346.681	0.34	-0.06	-0.34		
20795.00	90.090	342.590	6834.60	13705.80	13395.33	-3178.88	1695601.02	14367603.55	39°33'52.9258"N	80°48'15.0903"W	13767.36	346.650	0.41	0.18	0.36		
20893.00	90.220	342.650	6834.34	13803.78	13488.85	-3208.15	1695571.76	14367697.04	39°33'53.8508"N	80°48'15.4615"W	13865.12	346.621	0.15	0.13	0.06		
20992.00	89.970	342.460	6834.18	13902.75	13583.30	-3237.83	1695542.09	14367791.44	39°33'54.7848"N	80°48'15.8378"W	13963.87	346.593	0.32	-0.25	-0.19		
21089.00	89.940	342.080	6834.25	13999.73	13675.69	-3267.37	1695512.56	14367883.80	39°33'55.6986"N	80°48'16.2124"W	14060.59	346.563	0.39	-0.03	-0.39		



Actual Wellpath Report

Purple Unit 2H AWP Proj: 23809'
Page 10 of 12



REFERENCE WELLPATH IDENTIFICATION			
Operator	ANTERO RESOURCES CORPORATION	Well	Purple Unit 2H
Field	Tyler	API	47-095-02759-0000
Facility	Thin Air Pad	Wellbore	Purple Unit 2H AWB
Slot	Slot F		

WELLPATH DATA (269 stations) † = interpolated, ‡ = extrapolated station																
MD [ft]	Inclination [°]	Azimuth [°]	TVD [ft]	Vert Sect [ft]	North [ft]	East [ft]	Grid East [US ft]	Grid North [US ft]	Latitude	Longitude	Closure Dist [ft]	Closure Dir [°]	DLS [°/100ft]	Build Rate [°/100ft]	Turn Rate [°/100ft]	Comments
21187.00	90.520	342.280	6833.86	14097.72	13768.99	-3297.36	1695482.58	14367977.06	39°33'56.6213"N	80°48'16.5928"W	14158.31	346.533	0.63	0.59	0.20	
21285.00	90.250	342.140	6833.20	14195.70	13862.30	-3327.30	1695452.65	14368070.33	39°33'57.5442"N	80°48'16.9725"W	14256.03	346.503	0.31	-0.28	-0.14	
21382.00	90.460	342.320	6832.60	14292.68	13954.67	-3356.90	1695423.06	14368162.67	39°33'58.4577"N	80°48'17.3479"W	14352.76	346.474	0.29	0.22	0.19	
21481.00	90.580	342.680	6831.70	14391.66	14049.09	-3386.67	1695393.30	14368257.04	39°33'59.3915"N	80°48'17.7254"W	14451.52	346.447	0.38	0.12	0.36	
21577.00	90.280	343.160	6830.98	14487.61	14140.85	-3414.87	1695365.12	14368348.77	39°34'0.2990"N	80°48'18.0829"W	14547.33	346.424	0.59	-0.31	0.50	
21676.00	90.340	341.260	6830.44	14586.59	14235.11	-3445.11	1695334.89	14368442.99	39°34'1.2313"N	80°48'18.4665"W	14646.06	346.395	1.92	0.06	-1.92	
21772.00	90.370	341.230	6829.85	14682.59	14326.01	-3475.98	1695304.03	14368533.86	39°34'2.1303"N	80°48'18.8581"W	14741.68	346.362	0.04	0.03	-0.03	
21869.00	90.180	341.410	6829.38	14779.59	14417.90	-3507.05	1695272.98	14368625.71	39°34'3.0391"N	80°48'19.2523"W	14838.30	346.329	0.27	-0.20	0.19	
21966.00	90.550	341.700	6828.77	14876.58	14509.91	-3537.74	1695242.30	14368717.69	39°34'3.9492"N	80°48'19.6416"W	14934.97	346.298	0.48	0.38	0.30	
22063.00	90.490	342.100	6827.89	14973.57	14602.11	-3567.87	1695212.18	14368809.85	39°34'4.8610"N	80°48'20.0239"W	15031.88	346.269	0.42	-0.06	0.41	
22160.00	90.150	341.150	6827.34	15070.57	14694.16	-3598.45	1695181.62	14368901.86	39°34'5.7715"N	80°48'20.4118"W	15128.36	346.240	1.04	-0.35	-0.98	
22259.00	90.430	341.440	6826.84	15169.57	14787.93	-3630.20	1695149.88	14368995.59	39°34'6.6989"N	80°48'20.8146"W	15226.99	346.208	0.41	0.28	0.29	
22357.00	90.400	341.500	6826.13	15267.56	14880.85	-3661.34	1695118.75	14369088.47	39°34'7.6179"N	80°48'21.2097"W	15324.66	346.177	0.07	-0.03	0.06	
22454.00	90.740	341.740	6825.17	15364.56	14972.90	-3691.92	1695088.18	14369180.49	39°34'8.5282"N	80°48'21.5977"W	15421.35	346.149	0.43	0.35	0.25	
22553.00	89.600	341.320	6824.87	15463.55	15066.79	-3723.29	1695056.83	14369274.35	39°34'9.4569"N	80°48'21.9956"W	15520.02	346.119	1.23	-1.15	-0.42	
22651.00	91.260	342.320	6824.14	15561.54	15159.90	-3753.86	1695026.26	14369367.41	39°34'10.3777"N	80°48'22.3835"W	15617.74	346.092	1.98	1.69	1.02	
22749.00	91.110	342.060	6822.11	15659.50	15253.18	-3783.83	1694996.31	14369460.66	39°34'11.3003"N	80°48'22.7636"W	15715.50	346.068	0.31	-0.15	-0.27	
22847.00	90.680	341.810	6820.58	15757.48	15346.34	-3814.21	1694965.93	14369553.78	39°34'12.2216"N	80°48'23.1490"W	15813.23	346.042	0.51	-0.44	-0.26	
22944.00	90.220	341.370	6819.82	15854.48	15438.37	-3844.85	1694935.31	14369645.77	39°34'13.1319"N	80°48'23.5377"W	15909.94	346.015	0.66	-0.47	-0.45	
23042.00	89.750	341.080	6819.85	15952.48	15531.15	-3876.39	1694903.78	14369738.52	39°34'14.0495"N	80°48'23.9379"W	16007.60	345.986	0.56	-0.48	-0.30	
23140.00	89.940	340.960	6820.11	16050.48	15623.82	-3908.26	1694871.92	14369831.15	39°34'14.9661"N	80°48'24.3424"W	16105.23	345.956	0.23	0.19	-0.12	
23237.00	89.910	341.570	6820.24	16147.48	15715.68	-3939.42	1694840.78	14369922.98	39°34'15.8747"N	80°48'24.7377"W	16201.91	345.928	0.63	-0.03	0.63	
23335.00	90.220	341.580	6820.13	16245.48	15808.66	-3970.39	1694809.82	14370015.92	39°34'16.7942"N	80°48'25.1307"W	16299.62	345.902	0.32	0.32	-0.01	
23433.00	89.020	340.740	6820.78	16343.47	15901.41	-4002.04	1694778.19	14370108.63	39°34'17.7115"N	80°48'25.5322"W	16397.29	345.873	1.49	-1.22	-0.86	
23531.00	89.290	341.210	6822.22	16441.46	15994.04	-4033.98	1694746.26	14370201.23	39°34'18.6277"N	80°48'25.9376"W	16494.92	345.844	0.55	0.28	0.48	
23629.00	89.450	341.460	6823.30	16539.45	16086.88	-4065.34	1694714.91	14370294.03	39°34'19.5460"N	80°48'26.3355"W	16592.61	345.818	0.30	0.16	0.26	
23726.00	89.260	341.380	6824.39	16636.45	16178.82	-4096.25	1694684.02	14370385.93	39°34'20.4553"N	80°48'26.7277"W	16689.32	345.792	0.21	-0.20	-0.08	
23784.00	89.320	341.320	6825.11	16694.44	16233.77	-4114.79	1694665.48	14370440.86	39°34'20.9987"N	80°48'26.9630"W	16747.14	345.777	0.15	0.10	-0.10	
23809.00	89.320	341.320	6825.41	16719.44	16257.45	-4122.80	1694657.47	14370464.53	39°34'21.2329"N	80°48'27.0646"W	16772.07	345.770	0.00	0.00	0.00	Projected MD at TD: 23809'

HOLE & CASING SECTIONS - Ref Wellbore: Purple Unit 2H AWB Ref Wellpath: Purple Unit 2H AWP Proj: 23809'									
String/Diameter	Start MD [ft]	End MD [ft]	Interval [ft]	Start TVD [ft]	End TVD [ft]	Start N/S [ft]	Start E/W [ft]	End N/S [ft]	End E/W [ft]
20in Conductor	25.50	126.00	100.50	25.50	126.00	0.00	0.00	0.00	0.04
17.5in Open Hole	126.00	485.00	359.00	126.00	484.99	0.00	0.04	0.84	2.60
13.375in Casing Surface	25.50	464.00	438.50	25.50	463.99	0.00	0.00	0.64	2.28
12.25in Open Hole	485.00	2656.00	2171.00	484.99	2613.05	0.84	2.60	25.66	400.45
9.625in Casing Intermediate	25.50	2636.00	2610.50	25.50	2593.48	0.00	0.00	25.18	396.36
8.75in Open Hole	2656.00	6192.00	3536.00	2613.05	6045.52	25.66	400.45	33.72	1242.35
8.5in Open Hole	6192.00	23809.00	17617.00	6045.52	6825.41	33.72	1242.35	16257.45	-4122.80
5.5in Casing Production	25.50	23789.00	23763.50	25.50	6825.17	0.00	0.00	16238.51	-4116.39

TARGETS								
Name	TVD [ft]	North [ft]	East [ft]	Grid East [US ft]	Grid North [US ft]	Latitude	Longitude	Shape
Purple Unit 2H POE Rev-4	6855.00	572.10	1187.59	1699965.75	14354785.42	39°31'46.0929"N	80°47'19.7210"W	point
Purple Unit 2H BHL Rev-4	6881.00	16265.60	-4146.88	1694633.40	14370472.67	39°34'21.3139"N	80°48'27.3719"W	point
Purple Unit 2H LP Rev-4	6881.00	753.15	1126.05	1699904.23	14354966.40	39°31'47.8837"N	80°47'20.5010"W	point
Purple Unit 2H 50' L/R Hard Line	7000.00	8418.85	-1479.64	1697299.58	14362629.05	39°33'3.7049"N	80°47'53.5360"W	rectangle
	2D Rectangle 16575.4 x 100.							



Actual Wellpath Report

Purple Unit 2H AWP Proj: 23809'

Page 11 of 12



REFERENCE WELLPATH IDENTIFICATION

Operator	ANTERO RESOURCES CORPORATION	Well	Purple Unit 2H
Field	Tyler	API	47-095-02759-0000
Facility	Thin Air Pad	Wellbore	Purple Unit 2H AWB
Slot	Slot F		

WELLPATH COMPOSITION - Ref Wellbore: Purple Unit 2H AWB Ref Wellpath: Purple Unit 2H AWP Proj: 23809'

Start MD [ft]	End MD [ft]	Positional Uncertainty Model	Log Name/Comment	Wellbore	Survey Date
25.50	459.00	Gyrodatta 2015 - GC+VMR+DPIPE	01_Gyrodatta MS Gyro <17-1/2"> (100'-459')	Purple Unit 2H AWB	05/Dec/2021
459.00	2588.00	BH NaviTrak (2019) (Axial Corr+HRGM)	02_APS EM <12-1/4"> (459')(592'-2588')	Purple Unit 2H AWB	05/Dec/2021
2588.00	6125.00	BH NaviTrak (2019) (Axial Corr+HRGM)	03_APS EM <8-3/4"> (2588')(2707'-6125')	Purple Unit 2H AWB	11/Feb/2022
6125.00	23809.00	BH AutoTrak Curve/eXpress (2019) (HRGM, Short spacing)	04_BH AT Curve <8-1/2"> (6125')(6167'-23784')	Purple Unit 2H AWB	11/Feb/2022



Actual Wellpath Report

Purple Unit 2H AWP Proj: 23809'
Page 12 of 12



REFERENCE WELLPATH IDENTIFICATION			
Operator	ANTERO RESOURCES CORPORATION	Well	Purple Unit 2H
Field	Tyler	API	47-095-02759-0000
Facility	Thin Air Pad	Wellbore	Purple Unit 2H AWB
Slot	Slot F		

COMMENTS
<p>Wellpath general comments API: 47-095-02759-0000 BH Job #: 111128229 Rig: H&P 317 Duration: 2/15/2022-2/21/2022 Gyrodata MS Gyro <17-1/2"> (100'-459') APS EM <12-1/4"> (459')(592'-2588') APS EM <8-3/4"> (2588')(2707'-6125') BH AT Curve <8-1/2"> (6125')(6167'-23784') Sycamore: 6722' MD Middlesex: 6870' MD Burkett: 7026' MD Tully: 7088' MD Marcellus POE: 7269' MD Projected MD at TD: 23809'</p>