



# ANTERO RESOURCES CORPORATION

Location: Tyler County, WV  
 Field: Tyler  
 Facility: Nalley Pad

Slot: Slot #05  
 Well: Jed Unit 2H  
 Wellbore: Jed Unit 2H PWB

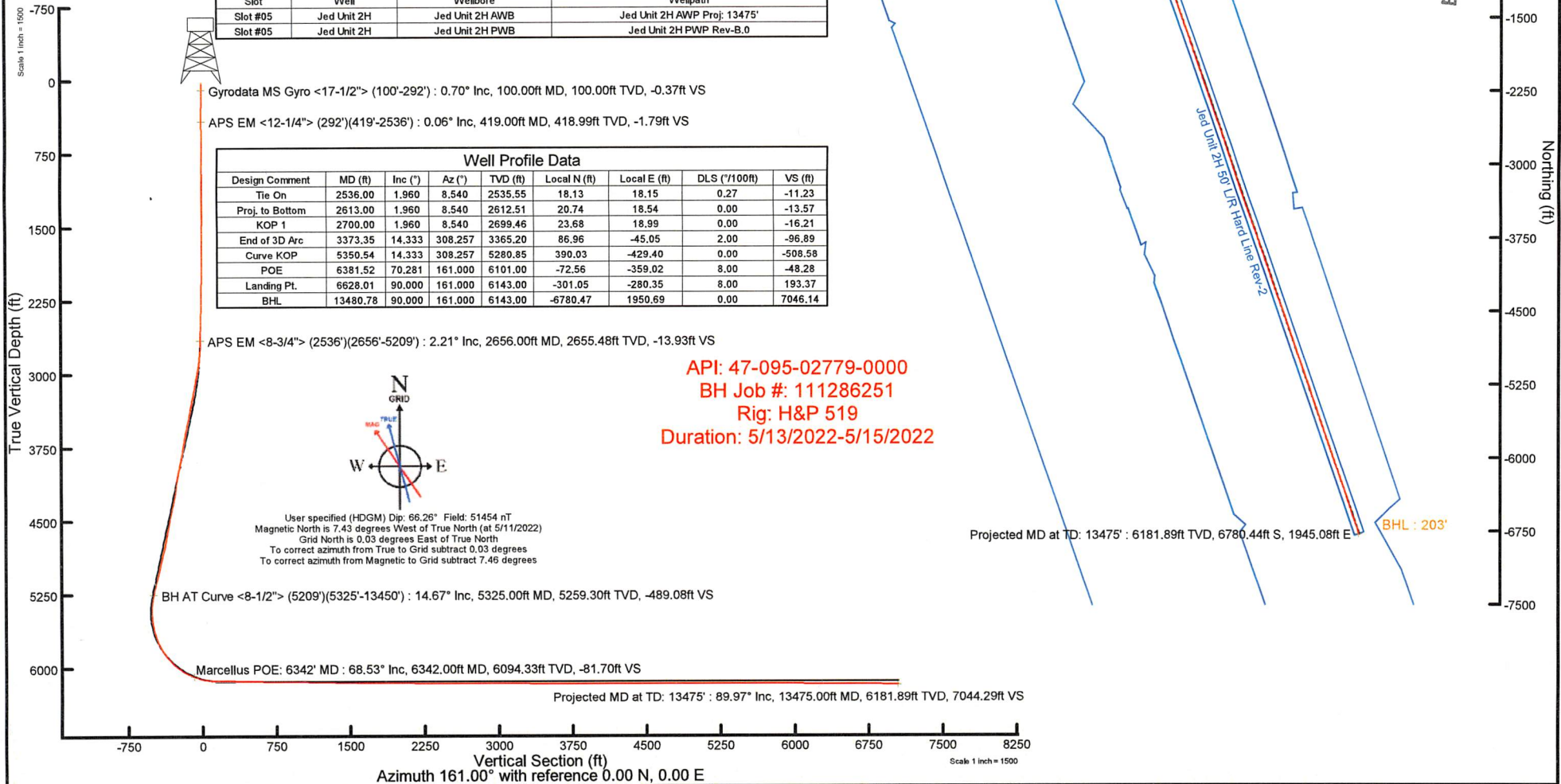


Plot reference wellpath is Jed Unit 2H PWP Rev-B.0	Grid System: NAD27 / UTM Zone 17 North, US feet
True vertical depths are referenced to H&P 519 (RKB)	North Reference: Grid north
Reference wellpath measured depths are referenced to H&P 519 (RKB)	Scale: True distance
H&P 519 (RKB) to Mean Sea Level: 1002 feet	Coordinates are in feet referenced to Slot
Mean Sea Level to Ground level (At Slot: Slot #05): -972 feet	Depths are in feet
Offset wellpath MDs are referenced to each path's detail MD datum	Created by: edsaryar on 2022-05-09; Database: WA_MPL_EASTERNUS_Defn

Location Information					
Facility Name		Grid East (US ft)	Grid North (US ft)	Latitude	Longitude
Nalley Pad		1653163.370	14360203.730	39°32'40.3242"N	80°57'17.2242"W
Slot	Local N (ft)	Local E (ft)	Grid East (US ft)	Grid North (US ft)	Latitude
Slot #05	-47.84	-37.15	1653126.230	14360155.910	39°32'39.8516"N
Comment		Jed Unit 2H		30ft	
H&P 519 (RKB) to Ground level (At Slot: Slot #05)				-972ft	
Mean Sea Level to Ground level (At Slot: Slot #05)				1002ft	
H&P 519 (RKB) to Mean Sea Level					

Well Data			
Slot	Well	Wellbore	Wellpath
Slot #05	Jed Unit 2H	Jed Unit 2H AWP	Jed Unit 2H AWP Proj: 13475'
Slot #05	Jed Unit 2H	Jed Unit 2H PWB	Jed Unit 2H PWP Rev-B.0

Well Profile Data							
Design Comment	MD (ft)	Inc (°)	Az (°)	TVD (ft)	Local N (ft)	Local E (ft)	VS (ft)
Tie On	2536.00	1.960	8.540	2535.55	18.13	18.15	-11.23
Proj. to Bottom	2613.00	1.960	8.540	2612.51	20.74	18.54	-13.57
KOP 1	2700.00	1.960	8.540	2699.46	23.68	18.99	-16.21
End of 3D Arc	3373.35	14.333	308.257	3365.20	86.96	-45.05	-96.89
Curve KOP	5350.54	14.333	308.257	5280.85	390.03	-429.40	-508.58
POE	6381.52	70.281	161.000	6101.00	-72.56	-359.02	-48.28
Landing Pt.	6628.01	90.000	161.000	6143.00	-301.05	-280.35	193.37
BHL	13480.78	90.000	161.000	6143.00	-6780.47	1950.69	7046.14



RECEIVED  
 Office of Oil and Gas  
 JAN 23 2023  
 WV Department of  
 Environmental Protection



# Actual Wellpath Report

Jed Unit 2H AWP Proj: 13475'

Page 1 of 8



REFERENCE WELLPATH IDENTIFICATION			
Operator	ANTERO RESOURCES CORPORATION	Well	Jed Unit 2H
Field	Tyler	API	47-095-02779-0000
Facility	Nalley Pad	Wellbore	Jed Unit 2H AWB
Slot	Slot #05		

REPORT SETUP INFORMATION			
Projection System	NAD27 / UTM Zone 17 North, US feet	Software System	WellArchitect® 6.0
North Reference	Grid	User	Edsaryar
Scale	0.999600	Report Generated	6/9/2022 at 6:03:20 PM
Convergence at slot	0.03° East	Database	WA_MPL_EASTERNUS_Defn

WELLPATH LOCATION						
	Local coordinates		Grid coordinates		Geographic coordinates	
	North[ft]	East[ft]	Easting[US ft]	Northing[US ft]	Latitude	Longitude
Slot Location	-47.84	-37.15	1653126.23	14360155.91	39°32'39.8516"N	80°57'17.6988"W
Facility Reference Pt			1653163.37	14360203.73	39°32'40.3242"N	80°57'17.2242"W
Field Reference Pt			0.00	0.00	0°00'0.0000"	85°29'19.3013"W

WELLPATH DATUM			
Calculation method	Minimum curvature	H&P 519 (RKB) to Facility Vertical Datum	1002.00ft
Horizontal Reference Pt	Slot	H&P 519 (RKB) to Mean Sea Level	1002.00ft
Vertical Reference Pt	H&P 519 (RKB)	H&P 519 (RKB) to Ground Level at Slot (Slot #05)	30.00ft
MD Reference Pt	H&P 519 (RKB)	Section Origin	N 0.00, E 0.00 ft
Field Vertical Reference	Mean Sea Level	Section Azimuth	161.00°

RECEIVED  
 Office of Oil and Gas  
 JAN 23 2023  
 WV Department of  
 Environmental Protection



# Actual Wellpath Report

Jed Unit 2H AWP Proj: 13475'  
Page 2 of 8



REFERENCE WELLPATH IDENTIFICATION			
Operator	ANTERO RESOURCES CORPORATION	Well	Jed Unit 2H
Field	Tyler	API	47-095-02779-0000
Facility	Nalley Pad	Wellbore	Jed Unit 2H AWB
Slot	Slot #05		

WELLPATH DATA (149 stations) † = interpolated, ‡ = extrapolated station																
MD [ft]	Inclination [°]	Azimuth [°]	TVD [ft]	Vert Sect [ft]	North [ft]	East [ft]	Grid East [US ft]	Grid North [US ft]	Latitude	Longitude	Closure Dist [ft]	Closure Dir [°]	DLS ["/100ft]	Build Rate ["/100ft]	Turn Rate ["/100ft]	Comments
0.00†	0.000	10.980	0.00	0.00	0.00	0.00	1653126.23	14360155.91	39°32'39.8516"N	80°57'17.6988"W	0.00	0.000	0.00	0.00	0.00	
30.00	0.000	10.980	30.00	0.00	0.00	0.00	1653126.23	14360155.91	39°32'39.8516"N	80°57'17.6988"W	0.00	0.000	0.00	0.00	0.00	
100.00	0.700	10.980	100.00	-0.37	0.42	0.08	1653126.31	14360156.33	39°32'39.8557"N	80°57'17.6977"W	0.43	10.980	1.00	1.00	0.00	Gyrodata MS Gyro <17-1/2"> (100'-292')
200.00	0.600	17.950	199.99	-1.32	1.52	0.36	1653126.59	14360157.43	39°32'39.8666"N	80°57'17.6942"W	1.56	13.315	0.13	-0.10	6.97	
292.00	0.250	60.190	291.99	-1.74	2.08	0.68	1653126.91	14360157.98	39°32'39.8721"N	80°57'17.6901"W	2.18	18.184	0.49	-0.38	45.91	
419.00	0.060	70.160	418.99	-1.79	2.24	0.98	1653127.21	14360158.14	39°32'39.8737"N	80°57'17.6862"W	2.44	23.769	0.15	-0.15	7.85	APS EM <12-1/4"> (292')(419'-2536')
510.00	0.270	102.720	509.99	-1.68	2.20	1.24	1653127.47	14360158.11	39°32'39.8734"N	80°57'17.6830"W	2.53	29.327	0.24	0.23	35.78	
600.00	0.340	69.120	599.99	-1.58	2.25	1.70	1653127.92	14360158.16	39°32'39.8739"N	80°57'17.6771"W	2.82	36.952	0.21	0.08	-37.33	
689.00	0.370	137.670	688.99	-1.32	2.14	2.14	1653128.36	14360158.04	39°32'39.8727"N	80°57'17.6715"W	3.02	45.004	0.45	0.03	77.02	
779.00	0.970	181.310	778.98	-0.34	1.16	2.31	1653128.54	14360157.07	39°32'39.8630"N	80°57'17.6692"W	2.59	63.400	0.83	0.67	48.49	
869.00	1.340	182.450	868.96	1.35	-0.65	2.25	1653128.48	14360155.26	39°32'39.8451"N	80°57'17.6701"W	2.34	106.209	0.41	0.41	1.27	
961.00	1.620	188.280	960.93	3.51	-3.02	2.02	1653128.25	14360152.90	39°32'39.8218"N	80°57'17.6730"W	3.63	146.216	0.35	0.30	6.34	
1051.00	0.940	178.910	1050.91	5.34	-5.01	1.85	1653128.08	14360150.90	39°32'39.8020"N	80°57'17.6752"W	5.34	159.757	0.79	-0.76	-10.41	
1146.00	0.400	47.210	1145.90	5.95	-5.57	2.11	1653128.34	14360150.35	39°32'39.7966"N	80°57'17.6719"W	5.95	159.270	1.31	-0.57	-138.63	
1241.00	0.630	51.910	1240.90	5.65	-5.02	2.76	1653128.99	14360150.89	39°32'39.8020"N	80°57'17.6636"W	5.73	151.184	0.25	0.24	4.95	
1335.00	0.880	39.690	1334.89	5.10	-4.15	3.63	1653129.86	14360151.77	39°32'39.8106"N	80°57'17.6525"W	5.51	138.799	0.31	0.27	-13.00	
1429.00	1.290	20.390	1428.88	3.91	-2.60	4.46	1653130.69	14360153.31	39°32'39.8259"N	80°57'17.6419"W	5.16	120.228	0.58	0.44	-20.53	
1524.00	1.140	50.980	1523.85	2.76	-1.00	5.57	1653131.79	14360154.91	39°32'39.8417"N	80°57'17.6277"W	5.65	100.192	0.69	-0.16	32.20	
1619.00	0.950	28.860	1618.84	1.91	0.28	6.68	1653132.91	14360156.19	39°32'39.8544"N	80°57'17.6135"W	6.69	87.564	0.47	-0.20	-23.28	
1713.00	1.230	50.240	1712.82	1.03	1.61	7.83	1653134.06	14360157.52	39°32'39.8675"N	80°57'17.5988"W	8.00	78.370	0.52	0.30	22.74	
1808.00	1.200	48.460	1807.80	0.28	2.92	9.36	1653135.59	14360158.83	39°32'39.8804"N	80°57'17.5793"W	9.81	72.653	0.05	-0.03	-1.87	
1902.00	1.150	51.090	1901.78	-0.42	4.17	10.83	1653137.06	14360160.08	39°32'39.8927"N	80°57'17.5605"W	11.61	68.948	0.08	-0.05	2.80	
1997.00	1.280	53.790	1996.76	-1.05	5.39	12.43	1653138.65	14360161.30	39°32'39.9049"N	80°57'17.5401"W	13.55	66.537	0.15	0.14	2.84	
2092.00	1.680	51.770	2091.73	-1.83	6.88	14.38	1653140.60	14360162.79	39°32'39.9196"N	80°57'17.5152"W	15.94	64.420	0.42	0.42	-2.13	
2186.00	1.510	36.760	2185.69	-2.98	8.73	16.20	1653142.43	14360164.63	39°32'39.9378"N	80°57'17.4919"W	18.40	61.689	0.48	-0.18	-15.97	
2281.00	1.240	14.830	2280.67	-4.54	10.72	17.21	1653143.44	14360166.63	39°32'39.9575"N	80°57'17.4790"W	20.28	58.077	0.62	-0.28	-23.08	
2375.00	1.710	4.250	2374.63	-6.67	13.11	17.58	1653143.80	14360169.01	39°32'39.9810"N	80°57'17.4743"W	21.93	53.293	0.58	0.50	-11.26	
2470.00	1.790	6.880	2469.59	-9.31	15.99	17.86	1653144.08	14360171.90	39°32'40.0096"N	80°57'17.4707"W	23.98	48.159	0.12	0.08	2.77	
2536.00	1.960	8.540	2535.55	-11.23	18.13	18.15	1653144.38	14360174.04	39°32'40.0307"N	80°57'17.4670"W	25.66	45.032	0.27	0.26	2.52	
2656.00	2.210	48.860	2655.48	-13.93	21.68	20.20	1653146.42	14360177.59	39°32'40.0658"N	80°57'17.4408"W	29.64	42.970	1.21	0.21	33.60	APS EM <8-3/4"> (2536')(2656'-5209')

RECEIVED  
 Office of Oil and Gas  
 JAN 23 2023  
 WV Department of  
 Environmental Protection



# Actual Wellpath Report

Jed Unit 2H AWP Proj: 13475'  
Page 3 of 8



REFERENCE WELLPATH IDENTIFICATION			
Operator	ANTERO RESOURCES CORPORATION	Well	Jed Unit 2H
Field	Tyler	API	47-095-02779-0000
Facility	Nalley Pad	Wellbore	Jed Unit 2H AWB
Slot	Slot #05		

WELLPATH DATA (149 stations)																
MD [ft]	Inclination [°]	Azimuth [°]	TVD [ft]	Vert Sect [ft]	North [ft]	East [ft]	Grid East [US ft]	Grid North [US ft]	Latitude	Longitude	Closure Dist [ft]	Closure Dir [°]	DLS [°/100ft]	Build Rate [°/100ft]	Turn Rate [°/100ft]	Comments
2751.00	2.490	0.080	2750.41	-16.57	24.95	21.58	1653147.80	14360180.85	39°32'40.0981"N	80°57'17.4231"W	32.99	40.857	2.06	0.29	-51.35	
2845.00	5.950	325.510	2844.15	-23.19	31.01	18.83	1653145.05	14360186.91	39°32'40.1580"N	80°57'17.4583"W	36.28	31.258	4.41	3.68	-36.78	
2940.00	9.230	321.340	2938.31	-35.12	41.02	11.28	1653137.50	14360196.92	39°32'40.2570"N	80°57'17.5546"W	42.55	15.368	3.50	3.45	-4.39	
3037.00	11.790	315.360	3033.68	-51.38	54.15	-0.55	1653125.68	14360210.04	39°32'40.3868"N	80°57'17.7055"W	54.16	359.418	2.87	2.64	-6.16	
3131.00	11.500	312.100	3125.74	-68.24	67.27	-14.25	1653111.99	14360223.15	39°32'40.5165"N	80°57'17.8803"W	68.76	348.039	0.76	-0.31	-3.47	
3225.00	12.090	317.050	3217.76	-85.44	80.76	-27.91	1653098.33	14360236.63	39°32'40.6499"N	80°57'18.0545"W	85.44	340.934	1.25	0.63	5.27	
3320.00	10.370	327.880	3310.95	-102.87	95.28	-39.24	1653087.01	14360251.15	39°32'40.7935"N	80°57'18.1990"W	103.04	337.618	2.86	-1.81	11.40	
3414.00	12.710	308.790	3403.07	-119.86	108.93	-51.80	1653074.45	14360264.80	39°32'40.9285"N	80°57'18.3593"W	120.62	334.567	4.73	2.49	-20.31	
3509.00	14.530	308.350	3495.40	-138.74	122.87	-69.30	1653056.96	14360278.74	39°32'41.0663"N	80°57'18.5825"W	141.07	330.579	1.92	1.92	-0.46	
3603.00	13.950	303.890	3586.51	-157.71	136.51	-87.95	1653038.32	14360292.36	39°32'41.2012"N	80°57'18.8206"W	162.39	327.207	1.32	-0.62	-4.74	
3697.00	12.790	296.590	3677.97	-174.18	147.49	-106.66	1653019.61	14360303.34	39°32'41.3098"N	80°57'19.0594"W	182.01	324.126	2.18	-1.23	-7.77	
3792.00	12.690	299.600	3770.63	-189.51	157.35	-125.14	1653001.14	14360313.19	39°32'41.4073"N	80°57'19.2951"W	201.04	321.505	0.71	-0.11	3.17	
3886.00	14.130	303.070	3862.07	-206.31	168.71	-143.73	1652982.56	14360324.55	39°32'41.5197"N	80°57'19.5324"W	221.63	319.571	1.75	1.53	3.69	
3980.00	14.220	300.230	3953.21	-224.10	180.78	-163.32	1652962.97	14360336.62	39°32'41.6391"N	80°57'19.7824"W	243.63	317.905	0.75	0.10	-3.02	
4075.00	14.000	300.970	4045.34	-241.74	192.57	-183.26	1652943.05	14360348.40	39°32'41.7557"N	80°57'20.0368"W	265.83	316.420	0.30	-0.23	0.78	
4169.00	11.940	294.870	4136.94	-257.19	202.51	-201.83	1652924.48	14360358.34	39°32'41.8541"N	80°57'20.2738"W	285.91	315.097	2.63	-2.19	-6.49	
4264.00	12.530	296.000	4229.79	-271.29	211.16	-220.01	1652906.31	14360366.99	39°32'41.9397"N	80°57'20.5058"W	304.95	313.825	0.67	0.62	1.19	
4358.00	14.130	300.290	4321.25	-287.19	221.42	-239.08	1652887.24	14360377.24	39°32'42.0411"N	80°57'20.7493"W	325.86	312.804	2.00	1.70	4.56	
4453.00	15.180	308.150	4413.17	-306.44	234.95	-258.88	1652867.46	14360390.77	39°32'42.1750"N	80°57'21.0019"W	349.60	312.226	2.36	1.11	8.27	
4547.00	13.730	305.290	4504.19	-325.83	249.00	-277.66	1652848.68	14360404.81	39°32'42.3139"N	80°57'21.2416"W	372.96	311.885	1.72	-1.54	-3.04	
4642.00	11.880	298.410	4596.83	-342.19	260.17	-295.47	1652830.88	14360415.97	39°32'42.4244"N	80°57'21.4688"W	393.69	311.365	2.52	-1.95	-7.24	
4736.00	11.740	308.020	4688.85	-357.34	270.66	-311.51	1652814.84	14360426.46	39°32'42.5282"N	80°57'21.6735"W	412.67	310.986	2.10	-0.15	10.22	
4831.00	12.740	321.920	4781.71	-375.35	284.87	-325.59	1652800.77	14360440.66	39°32'42.6686"N	80°57'21.8532"W	432.62	311.183	3.27	1.05	14.63	
4925.00	14.570	322.800	4873.05	-396.38	302.44	-339.14	1652787.23	14360458.23	39°32'42.8424"N	80°57'22.0259"W	454.41	311.727	1.96	1.95	0.94	
5020.00	14.970	317.730	4964.91	-419.00	321.04	-354.61	1652771.76	14360476.82	39°32'43.0263"N	80°57'22.2234"W	478.35	312.155	1.42	0.42	-5.34	
5115.00	14.610	313.490	5056.77	-440.90	338.37	-371.56	1652754.82	14360494.14	39°32'43.1976"N	80°57'22.4396"W	502.54	312.323	1.20	-0.38	-4.46	
5209.00	16.010	312.160	5147.43	-462.77	355.23	-389.77	1652736.62	14360511.00	39°32'43.3643"N	80°57'22.6720"W	527.36	312.345	1.54	1.49	-1.41	
5325.00	14.670	307.840	5259.30	-489.08	374.98	-413.23	1652713.17	14360530.74	39°32'43.5596"N	80°57'22.9713"W	558.00	312.222	1.52	-1.16	-3.72	BH AT Curve <8-1/2"> (5209')(5325'-13450')
5418.00	10.530	287.230	5350.08	-503.98	384.73	-430.66	1652695.74	14360540.48	39°32'43.6561"N	80°57'23.1938"W	577.48	311.776	6.51	-4.45	-22.16	
5512.00	7.010	234.660	5443.11	-507.45	383.95	-443.57	1652682.84	14360539.71	39°32'43.6485"N	80°57'23.3585"W	586.66	310.879	8.90	-3.74	-55.93	

RECEIVED  
 Office of Oil and Gas  
 JAN 23 2023  
 WV Department of  
 Environmental Protection



# Actual Wellpath Report

Jed Unit 2H AWP Proj: 13475'

Page 4 of 8



REFERENCE WELLPATH IDENTIFICATION				
Operator	ANTERO RESOURCES CORPORATION		Well	Jed Unit 2H
Field	Tyler		API	47-095-02779-0000
Facility	Nalley Pad		Wellbore	Jed Unit 2H AWB
Slot	Slot #05			

WELLPATH DATA (149 stations) † = interpolated, ‡ = extrapolated station																
MD [ft]	Inclination [°]	Azimuth [°]	TVD [ft]	Vert Sect [ft]	North [ft]	East [ft]	Grid East [US ft]	Grid North [US ft]	Latitude	Longitude	Closure Dist [ft]	Closure Dir [°]	DLS [°/100ft]	Build Rate [°/100ft]	Turn Rate [°/100ft]	Comments
5606.00	9.120	207.680	5536.20	-500.72	374.03	-451.71	1652674.70	14360529.79	39°32'43.5505"N	80°57'23.4625"W	586.47	309.626	4.55	2.24	-28.70	
5700.00	16.600	189.910	5627.82	-483.82	354.17	-457.49	1652668.92	14360509.94	39°32'43.3542"N	80°57'23.5364"W	578.57	307.746	8.91	7.96	-18.90	
5795.00	21.750	172.130	5717.59	-454.63	323.32	-457.42	1652668.99	14360479.10	39°32'43.0493"N	80°57'23.5357"W	560.15	305.254	8.14	5.42	-18.72	
5889.00	29.800	169.760	5802.17	-414.39	283.02	-450.87	1652675.54	14360438.81	39°32'42.6509"N	80°57'23.4523"W	532.34	302.117	8.63	8.56	-2.52	
5984.00	36.580	167.410	5881.63	-362.86	232.10	-440.49	1652685.92	14360387.92	39°32'42.1476"N	80°57'23.3202"W	497.90	297.785	7.26	7.14	-2.47	
5997.00†	37.719	166.979	5891.99	-355.06	224.44	-438.75	1652687.66	14360380.26	39°32'42.0720"N	80°57'23.2980"W	492.83	297.092	8.98	8.76	-3.32	Sycamore: 5997' MD
6079.00	44.930	164.690	5953.53	-301.14	172.01	-425.44	1652700.97	14360327.85	39°32'41.5537"N	80°57'23.1284"W	458.89	292.014	8.98	8.79	-2.79	
6131.00†	50.079	164.162	5988.65	-262.88	135.09	-415.14	1652711.26	14360290.94	39°32'41.1887"N	80°57'22.9971"W	436.56	288.025	9.93	9.90	-1.02	Middlesex: 6131' MD
6173.00	54.240	163.790	6014.41	-229.77	103.22	-405.98	1652720.41	14360259.08	39°32'40.8737"N	80°57'22.8804"W	418.90	284.264	9.93	9.91	-0.88	
6267.00	62.810	164.840	6063.45	-149.81	26.10	-384.36	1652742.02	14360181.99	39°32'40.1114"N	80°57'22.6049"W	385.25	273.884	9.17	9.12	1.12	
6276.00†	63.496	164.980	6067.51	-141.80	18.34	-382.27	1652744.11	14360174.25	39°32'40.0347"N	80°57'22.5783"W	382.71	272.747	7.75	7.63	1.55	Burkett: 6276' MD
6342.00†	68.533	165.958	6094.33	-81.70	-40.01	-367.16	1652759.22	14360115.91	39°32'39.4579"N	80°57'22.3857"W	369.33	263.781	7.75	7.63	1.48	Marcellus POE: 6342' MD
6362.00	70.060	166.240	6101.40	-63.07	-58.17	-362.66	1652763.71	14360097.76	39°32'39.2784"N	80°57'22.3285"W	367.30	260.887	7.75	7.64	1.41	
6457.00	78.630	165.090	6127.01	28.02	-146.71	-340.02	1652786.35	14360009.26	39°32'38.4033"N	80°57'22.0399"W	370.32	246.661	9.10	9.02	-1.21	
6551.00	89.540	162.550	6136.69	121.26	-236.36	-313.98	1652812.37	14359919.65	39°32'37.5171"N	80°57'21.7082"W	393.00	233.029	11.91	11.61	-2.70	
6646.00	89.020	159.620	6137.88	216.24	-326.21	-283.19	1652843.15	14359829.83	39°32'36.6289"N	80°57'21.3157"W	431.99	220.962	3.13	-0.55	-3.08	
6740.00	88.950	159.630	6139.55	310.20	-414.32	-250.47	1652875.86	14359741.76	39°32'35.7580"N	80°57'20.8986"W	484.14	211.155	0.08	-0.07	0.01	
6834.00	89.170	159.650	6141.09	404.16	-502.43	-217.77	1652908.55	14359653.68	39°32'34.8870"N	80°57'20.4818"W	547.60	203.434	0.24	0.23	0.02	
6929.00	88.890	159.350	6142.70	499.11	-591.40	-184.51	1652941.80	14359564.75	39°32'34.0075"N	80°57'20.0577"W	619.52	197.327	0.43	-0.29	-0.32	
7023.00	88.980	158.840	6144.44	593.04	-679.20	-150.97	1652975.32	14359476.98	39°32'33.1396"N	80°57'19.6302"W	695.78	192.532	0.55	0.10	-0.54	
7118.00	90.120	159.740	6145.19	688.00	-768.06	-117.38	1653008.90	14359388.16	39°32'32.2613"N	80°57'19.2020"W	776.97	188.689	1.53	1.20	0.95	
7213.00	90.220	162.580	6144.91	782.99	-857.96	-86.70	1653039.56	14359298.30	39°32'31.3726"N	80°57'18.8110"W	862.33	185.771	2.99	0.11	2.99	
7307.00	88.740	160.400	6145.76	876.97	-947.08	-56.86	1653069.39	14359209.21	39°32'30.4916"N	80°57'18.4307"W	948.79	183.436	2.80	-1.57	-2.32	
7402.00	88.890	161.950	6147.73	971.95	-1036.98	-26.22	1653100.02	14359119.35	39°32'29.6030"N	80°57'18.0401"W	1037.31	181.448	1.64	0.16	1.63	
7496.00	88.770	161.360	6149.65	1065.92	-1126.18	3.36	1653129.59	14359030.18	39°32'28.7212"N	80°57'17.6631"W	1126.19	179.829	0.64	-0.13	-0.63	
7591.00	88.950	161.530	6151.54	1160.90	-1216.23	33.59	1653159.80	14358940.17	39°32'27.8311"N	80°57'17.2779"W	1216.69	178.418	0.26	0.19	0.18	
7686.00	89.050	161.530	6153.19	1255.88	-1306.32	63.68	1653189.88	14358850.12	39°32'26.9406"N	80°57'16.8943"W	1307.87	177.209	0.11	0.11	0.00	
7780.00	88.800	160.060	6154.96	1349.86	-1395.07	94.59	1653220.78	14358761.40	39°32'26.0633"N	80°57'16.5003"W	1398.27	176.121	1.59	-0.27	-1.56	
7875.00	88.610	160.880	6157.10	1444.83	-1484.58	126.34	1653252.52	14358671.93	39°32'25.1784"N	80°57'16.0956"W	1489.95	175.136	0.89	-0.20	0.86	
7969.00	88.830	160.860	6159.20	1538.81	-1573.37	157.14	1653283.31	14358583.18	39°32'24.3008"N	80°57'15.7031"W	1581.19	174.296	0.24	0.23	-0.02	

RECEIVED  
 Office of Oil and Gas  
 JAN 23 2023  
 WV Department of  
 Environmental Protection



# Actual Wellpath Report

Jed Unit 2H AWP Proj: 13475'

Page 5 of 8



REFERENCE WELLPATH IDENTIFICATION				
Operator	ANTERO RESOURCES CORPORATION		Well	Jed Unit 2H
Field	Tyler		API	47-095-02779-0000
Facility	Nalley Pad		Wellbore	Jed Unit 2H AWB
Slot	Slot #05			

WELLPATH DATA (149 stations)																
MD [ft]	Inclination [°]	Azimuth [°]	TVD [ft]	Vert Sect [ft]	North [ft]	East [ft]	Grid East [US ft]	Grid North [US ft]	Latitude	Longitude	Closure Dist [ft]	Closure Dir [°]	DLS ["/100ft]	Build Rate ["/100ft]	Turn Rate ["/100ft]	Comments
8064.00	89.600	161.020	6160.51	1633.80	-1663.15	188.16	1653314.31	14358493.43	39°32'23.4133"N	80°57'15.3077"W	1673.76	173.545	0.83	0.81	0.17	
8159.00	90.120	162.520	6160.74	1728.79	-1753.38	217.88	1653344.02	14358403.24	39°32'22.5214"N	80°57'14.9290"W	1766.86	172.917	1.67	0.55	1.58	
8253.00	89.020	161.420	6161.44	1822.77	-1842.76	246.97	1653373.10	14358313.89	39°32'21.6379"N	80°57'14.5582"W	1859.23	172.367	1.65	-1.17	-1.17	
8348.00	89.260	161.240	6162.87	1917.75	-1932.75	277.38	1653403.50	14358223.94	39°32'20.7483"N	80°57'14.1707"W	1952.55	171.833	0.32	0.25	-0.19	
8442.00	89.630	161.170	6163.78	2011.75	-2021.73	307.66	1653433.77	14358134.99	39°32'19.8687"N	80°57'13.7848"W	2045.01	171.347	0.40	0.39	-0.07	
8537.00	89.540	161.250	6164.47	2106.75	-2111.67	338.26	1653464.36	14358045.09	39°32'18.9797"N	80°57'13.3948"W	2138.59	170.899	0.13	-0.09	0.08	
8632.00	89.450	161.200	6165.31	2201.74	-2201.61	368.84	1653494.92	14357955.19	39°32'18.0906"N	80°57'13.0051"W	2232.29	170.490	0.11	-0.09	-0.05	
8726.00	89.450	161.540	6166.21	2295.74	-2290.68	398.86	1653524.93	14357866.15	39°32'17.2102"N	80°57'12.6225"W	2325.14	170.122	0.36	0.00	0.36	
8821.00	89.660	161.300	6166.95	2390.73	-2380.72	429.13	1653555.19	14357776.14	39°32'16.3201"N	80°57'12.2367"W	2419.09	169.782	0.34	0.22	-0.25	
8915.00	90.680	160.760	6166.67	2484.73	-2469.62	459.69	1653585.73	14357687.29	39°32'15.4414"N	80°57'11.8473"W	2512.03	169.456	1.23	1.09	-0.57	
9010.00	89.050	158.810	6166.89	2579.70	-2558.76	492.51	1653618.54	14357598.18	39°32'14.5602"N	80°57'11.4289"W	2605.73	169.105	2.68	-1.72	-2.05	
9105.00	90.980	161.390	6166.87	2674.67	-2648.07	524.84	1653650.86	14357508.90	39°32'13.6773"N	80°57'11.0169"W	2699.58	168.789	3.39	2.03	2.72	
9199.00	89.780	161.760	6166.24	2768.67	-2737.25	554.55	1653680.56	14357419.76	39°32'12.7958"N	80°57'10.6383"W	2792.86	168.547	1.34	-1.28	0.39	
9294.00	89.350	160.990	6166.96	2863.66	-2827.27	584.89	1653710.89	14357329.77	39°32'11.9059"N	80°57'10.2516"W	2887.14	168.312	0.93	-0.45	-0.81	
9388.00	89.540	160.790	6167.87	2957.65	-2916.09	615.66	1653741.65	14357240.99	39°32'11.0279"N	80°57'9.8595"W	2980.37	168.078	0.29	0.20	-0.21	
9483.00	89.660	161.150	6168.54	3052.65	-3005.89	646.64	1653772.61	14357151.23	39°32'10.1402"N	80°57'9.4647"W	3074.66	167.859	0.40	0.13	0.38	
9577.00	89.690	160.210	6169.07	3146.65	-3094.60	677.74	1653803.70	14357062.56	39°32'9.2634"N	80°57'9.0684"W	3167.94	167.647	1.00	0.03	-1.00	
9672.00	89.720	161.270	6169.56	3241.64	-3184.28	709.07	1653835.02	14356972.91	39°32'8.3769"N	80°57'8.6691"W	3262.27	167.446	1.12	0.03	1.12	
9766.00	89.820	161.840	6169.94	3335.64	-3273.45	738.81	1653864.75	14356883.78	39°32'7.4954"N	80°57'8.2901"W	3355.79	167.281	0.62	0.11	0.61	
9861.00	89.910	161.530	6170.16	3430.63	-3363.63	768.67	1653894.59	14356793.63	39°32'6.6039"N	80°57'7.9097"W	3450.35	167.128	0.34	0.09	-0.33	
9955.00	89.510	160.700	6170.64	3524.63	-3452.57	799.09	1653925.00	14356704.73	39°32'5.7247"N	80°57'7.5220"W	3543.84	166.968	0.98	-0.43	-0.88	
10050.00	89.320	160.430	6171.61	3619.62	-3542.15	830.70	1653956.60	14356615.18	39°32'4.8392"N	80°57'7.1191"W	3638.26	166.802	0.35	-0.20	-0.28	
10145.00	89.850	160.110	6172.29	3714.61	-3631.57	862.77	1653988.65	14356525.79	39°32'3.9553"N	80°57'6.7104"W	3732.65	166.636	0.65	0.56	-0.34	
10239.00	89.600	160.910	6172.75	3808.61	-3720.19	894.13	1654020.00	14356437.22	39°32'3.0793"N	80°57'6.3108"W	3826.13	166.486	0.89	-0.27	0.85	
10334.00	89.690	161.480	6173.33	3903.60	-3810.11	924.75	1654050.61	14356347.33	39°32'2.1904"N	80°57'5.9206"W	3920.73	166.358	0.61	0.09	0.60	
10428.00	89.630	161.190	6173.89	3997.60	-3899.17	954.84	1654080.68	14356258.31	39°32'1.3101"N	80°57'5.5372"W	4014.38	166.240	0.32	-0.06	-0.31	
10523.00	89.910	160.990	6174.27	4092.60	-3989.04	985.62	1654111.46	14356168.47	39°32'0.4217"N	80°57'5.1449"W	4109.00	166.121	0.36	0.29	-0.21	
10617.00	89.880	160.800	6174.45	4186.60	-4077.86	1016.39	1654142.21	14356079.69	39°31'59.5437"N	80°57'4.7529"W	4202.62	166.004	0.20	-0.03	-0.20	
10712.00	91.720	161.150	6173.12	4281.58	-4167.66	1047.35	1654173.16	14355989.92	39°31'58.6560"N	80°57'4.3583"W	4297.25	165.893	1.97	1.94	0.37	
10807.00	90.220	161.210	6171.51	4376.57	-4257.57	1077.99	1654203.79	14355900.06	39°31'57.7673"N	80°57'3.9678"W	4391.92	165.792	1.58	-1.58	0.06	

RECEIVED  
 Office of Oil and Gas  
 JAN 23 2023  
 WV Department of  
 Environmental Protection



# Actual Wellpath Report

Jed Unit 2H AWP Proj: 13475'

Page 6 of 8



REFERENCE WELLPATH IDENTIFICATION				
Operator	ANTERO RESOURCES CORPORATION		Well	Jed Unit 2H
Field	Tyler		API	47-095-02779-0000
Facility	Nalley Pad		Wellbore	Jed Unit 2H AWB
Slot	Slot #05			

WELLPATH DATA (149 stations) † = interpolated, ‡ = extrapolated station																
MD [ft]	Inclination [°]	Azimuth [°]	TVD [ft]	Vert Sect [ft]	North [ft]	East [ft]	Grid East [US ft]	Grid North [US ft]	Latitude	Longitude	Closure Dist [ft]	Closure Dir [°]	DLS [°/100ft]	Build Rate [°/100ft]	Turn Rate [°/100ft]	Comments
10902.00	89.910	159.440	6171.40	4471.56	-4347.02	1109.98	1654235.76	14355810.64	39°31'56.8830"N	80°57'3.5603"W	4486.49	165.676	1.89	-0.33	-1.86	
10996.00	89.750	158.990	6171.68	4565.51	-4434.90	1143.34	1654269.11	14355722.80	39°31'56.0143"N	80°57'3.1352"W	4579.90	165.544	0.51	-0.17	-0.48	
11091.00	90.460	161.170	6171.51	4660.49	-4524.21	1175.70	1654301.46	14355633.52	39°31'55.1314"N	80°57'2.7227"W	4674.48	165.433	2.41	0.75	2.29	
11185.00	89.940	160.700	6171.18	4754.49	-4613.05	1206.40	1654332.15	14355544.71	39°31'54.2532"N	80°57'2.3315"W	4768.19	165.344	0.75	-0.55	-0.50	
11280.00	90.620	162.070	6170.72	4849.48	-4703.08	1236.73	1654362.46	14355454.72	39°31'53.3633"N	80°57'1.9451"W	4862.96	165.267	1.61	0.72	1.44	
11375.00	89.850	160.920	6170.33	4944.48	-4793.16	1266.88	1654392.60	14355364.67	39°31'52.4728"N	80°57'1.5609"W	4957.76	165.195	1.46	-0.81	-1.21	
11470.00	90.060	160.640	6170.40	5039.48	-4882.87	1298.15	1654423.86	14355275.01	39°31'51.5860"N	80°57'1.1624"W	5052.48	165.112	0.37	0.22	-0.29	
11565.00	89.660	160.940	6170.63	5134.48	-4972.58	1329.41	1654455.11	14355185.33	39°31'50.6992"N	80°57'0.7642"W	5147.22	165.032	0.53	-0.42	0.32	
11659.00	89.780	160.880	6171.09	5228.47	-5061.41	1360.15	1654485.84	14355096.54	39°31'49.8211"N	80°57'0.3724"W	5240.98	164.958	0.14	0.13	-0.06	
11754.00	90.150	161.160	6171.15	5323.47	-5151.24	1391.05	1654516.72	14355006.74	39°31'48.9331"N	80°56'59.9787"W	5335.76	164.888	0.49	0.39	0.29	
11849.00	89.110	159.820	6171.76	5418.47	-5240.78	1422.78	1654548.43	14354917.24	39°31'48.0480"N	80°56'59.5745"W	5430.48	164.811	1.79	-1.09	-1.41	
11943.00	90.520	162.800	6172.07	5512.45	-5329.81	1452.89	1654578.54	14354828.24	39°31'47.1679"N	80°56'59.1908"W	5524.29	164.752	3.51	1.50	3.17	
12038.00	89.940	160.870	6171.69	5607.43	-5420.07	1482.51	1654608.14	14354738.02	39°31'46.2757"N	80°56'58.8134"W	5619.16	164.703	2.12	-0.61	-2.03	
12132.00	89.480	160.600	6172.16	5701.43	-5508.81	1513.52	1654639.14	14354649.32	39°31'45.3985"N	80°56'58.4183"W	5712.94	164.637	0.57	-0.49	-0.29	
12227.00	89.420	162.540	6173.07	5796.42	-5598.92	1543.55	1654669.16	14354559.24	39°31'44.5077"N	80°56'58.0357"W	5807.80	164.587	2.04	-0.06	2.04	
12321.00	89.450	160.310	6174.00	5890.41	-5688.02	1573.49	1654699.09	14354470.18	39°31'43.6270"N	80°56'57.6542"W	5901.65	164.537	2.37	0.03	-2.37	
12416.00	90.220	161.690	6174.27	5985.40	-5777.84	1604.42	1654730.01	14354380.39	39°31'42.7391"N	80°56'57.2602"W	5996.46	164.481	1.66	0.81	1.45	
12510.00	89.260	160.570	6174.70	6079.40	-5866.78	1634.82	1654760.39	14354291.48	39°31'41.8598"N	80°56'56.8728"W	6090.30	164.429	1.57	-1.02	-1.19	
12605.00	89.940	161.050	6175.36	6174.39	-5956.50	1666.05	1654791.61	14354201.80	39°31'40.9729"N	80°56'56.4750"W	6185.11	164.374	0.88	0.72	0.51	
12699.00	89.020	161.030	6176.22	6268.39	-6045.40	1696.59	1654822.13	14354112.94	39°31'40.0942"N	80°56'56.0859"W	6278.95	164.324	0.98	-0.98	-0.02	
12793.00	89.480	160.060	6177.45	6362.38	-6134.02	1727.89	1654853.43	14354024.35	39°31'39.2181"N	80°56'55.6870"W	6372.74	164.268	1.14	0.49	-1.03	
12888.00	89.630	160.930	6178.19	6457.37	-6223.57	1759.61	1654885.13	14353934.84	39°31'38.3329"N	80°56'55.2829"W	6467.53	164.213	0.93	0.16	0.92	
12982.00	89.750	161.880	6178.69	6551.37	-6312.66	1789.58	1654915.09	14353845.79	39°31'37.4523"N	80°56'54.9010"W	6561.42	164.172	1.02	0.13	1.01	
13077.00	89.780	162.050	6179.08	6646.35	-6402.99	1818.99	1654944.49	14353755.49	39°31'36.5593"N	80°56'54.5263"W	6656.35	164.141	0.18	0.03	0.18	
13171.00	90.000	161.190	6179.26	6740.34	-6492.19	1848.63	1654974.12	14353666.33	39°31'35.6775"N	80°56'54.1487"W	6750.26	164.106	0.94	0.23	-0.91	
13265.00	89.940	161.500	6179.31	6834.34	-6581.25	1878.70	1655004.18	14353577.30	39°31'34.7971"N	80°56'53.7657"W	6844.15	164.068	0.34	-0.06	0.33	
13359.00	88.460	160.470	6180.63	6928.33	-6670.11	1909.32	1655034.79	14353488.48	39°31'33.9187"N	80°56'53.3755"W	6938.00	164.026	1.92	-1.57	-1.10	
13450.00	89.970	163.060	6181.87	7019.30	-6756.52	1937.79	1655063.24	14353402.10	39°31'33.0645"N	80°56'53.0129"W	7028.92	163.997	3.29	1.66	2.85	
13475.00†	89.970	163.060	6181.89	7044.29	-6780.44	1945.08	1655070.53	14353378.20	39°31'32.8281"N	80°56'52.9201"W	7053.91	163.994	0.00	0.00	0.00	Projected MD at TD: 13475'

HOLE & CASING SECTIONS - Ref Wellbore: Jed Unit 2H AWB Ref Wellpath: Jed Unit 2H AWP Proj: 13475'										
String/Diameter	Start MD [ft]	End MD [ft]	Interval [ft]	Start TVD [ft]	End TVD [ft]	Start N/S [ft]	Start E/W [ft]	End N/S [ft]	End E/W [ft]	
20in Conductor	30.00	130.00	100.00	30.00	130.00	0.00	0.00	0.77	0.16	
17.5in Open Hole	130.00	388.00	258.00	130.00	387.99	0.77	0.16	2.22	0.94	
13.375in Casing Surface	30.00	368.00	338.00	30.00	367.99	0.00	0.00	2.20	0.91	
12.25in Open Hole	388.00	2613.00	2225.00	387.99	2612.51	2.22	0.94	20.53	19.14	
9.625in Casing Intermediate	30.00	2593.00	2563.00	30.00	2592.52	0.00	0.00	19.95	18.77	
8.75in Open Hole	2613.00	5351.00	2738.00	2612.51	5284.53	20.53	19.14	378.65	-418.34	
8.5in Open Hole	5351.00	13475.00	8124.00	5284.53	6181.89	378.65	-418.34	-6780.44	1945.08	
5.5in Casing Production	30.00	13455.00	13425.00	30.00	6181.88	0.00	0.00	-6761.31	1939.25	

RECEIVED  
 Office of Oil and Gas  
 Environmental Protection  
 WY Department of  
 Environmental Protection  
 JAN 28 2023

**TARGETS**

Name	TVD [ft]	North [ft]	East [ft]	Grid East [US ft]	Grid North [US ft]	Latitude	Longitude	Shape
Jed Unit 2H POE Rev-2	6101.00	-72.56	-359.02	1652767.35	14360083.38	39°32'39.1362"N	80°57'22.2821"W	point
Jed Unit 2H BHL Rev-2	6143.00	-6780.47	1950.69	1655076.14	14353378.16	39°31'32.8278"N	80°56'52.8485"W	point
Jed Unit 2H LP Rev-2	6143.00	-301.05	-280.35	1652845.99	14359854.98	39°32'36.8776"N	80°57'21.2793"W	point
Jed Unit 2H 50' L/R Hard Line Rev-2	6500.00	-3426.52	795.83	1653921.74	14356730.77	39°32'5.9823"N	80°57'7.5634"W	rectangle
2D Rectangle 7094.42 x 100.								

RECEIVED  
Office of Oil and Gas  
JAN 23 2023  
WV Department of  
Environmental Protection





# Actual Wellpath Report

Jed Unit 2H AWP Proj: 13475'

Page 7 of 8



REFERENCE WELLPATH IDENTIFICATION			
Operator	ANTERO RESOURCES CORPORATION	Well	Jed Unit 2H
Field	Tyler	API	47-095-02779-0000
Facility	Nalley Pad	Wellbore	Jed Unit 2H AWB
Slot	Slot #05		

WELLPATH COMPOSITION - Ref Wellbore: Jed Unit 2H AWB Ref Wellpath: Jed Unit 2H AWP Proj: 13475'					
Start MD [ft]	End MD [ft]	Positional Uncertainty Model	Log Name/Comment	Wellbore	Survey Date
30.00	292.00	Gyrodatta 2015 - GC+WIR+CAS	01 Gyrodatta MS Gyro <17-1/2"> (100'-292')	Jed Unit 2H AWB	4/26/2022
292.00	2536.00	BH NaviTrak (2019) (Axial Corr+HRGM)	02 APS EM <12-1/4"> (292')(419'-2536')	Jed Unit 2H AWB	4/26/2022
2536.00	5209.00	BH NaviTrak (2019) (Axial Corr+HRGM)	03 APS EM <8-3/4"> (2536')(2656'-5209')	Jed Unit 2H AWB	5/11/2022
5209.00	13475.00	BH AutoTrak Curve/eXpress (2019) (HRGM, Short spacing)	04 BH AT Curve <8-1/2"> (5209')(5325'-13450')	Jed Unit 2H AWB	5/11/2022

RECEIVED  
 Office of Oil and Gas  
 WV Department of  
 Environmental Protection  
 JAN 23 2023



# Actual Wellpath Report

Jed Unit 2H AWP Proj: 13475'

Page 8 of 8



## REFERENCE WELLPATH IDENTIFICATION

Operator	ANTERO RESOURCES CORPORATION	Well	Jed Unit 2H
Field	Tyler	API	47-095-02779-0000
Facility	Nalley Pad	Wellbore	Jed Unit 2H AWB
Slot	Slot #05		

## COMMENTS

### Wellpath general comments

API: 47-095-02779-0000

BH Job #: 111286251

Rig: H&P 519

Duration: 5/13/2022-5/15/2022

Gyrodax MS Gyro <17-1/2"> (100'-292')

APS EM <12-1/4"> (292')(419'-2536')

APS EM <8-3/4"> (2536')(2656'-5209')

BH AT Curve <8-1/2"> (5209')(5325'-13450')

Sycamore: 5997' MD

Middlesex: 6131' MD

Burkett: 6276' MD

Marcellus POE: 6342' MD

Projected MD at TD: 13475'

RECEIVED  
Office of Oil and Gas  
JAN 23 2023  
WV Department of  
Environmental Protection