



# ANTERO RESOURCES CORPORATION



Location: Tyler County, WV  
Field: Tyler  
Facility: Nalley Pad

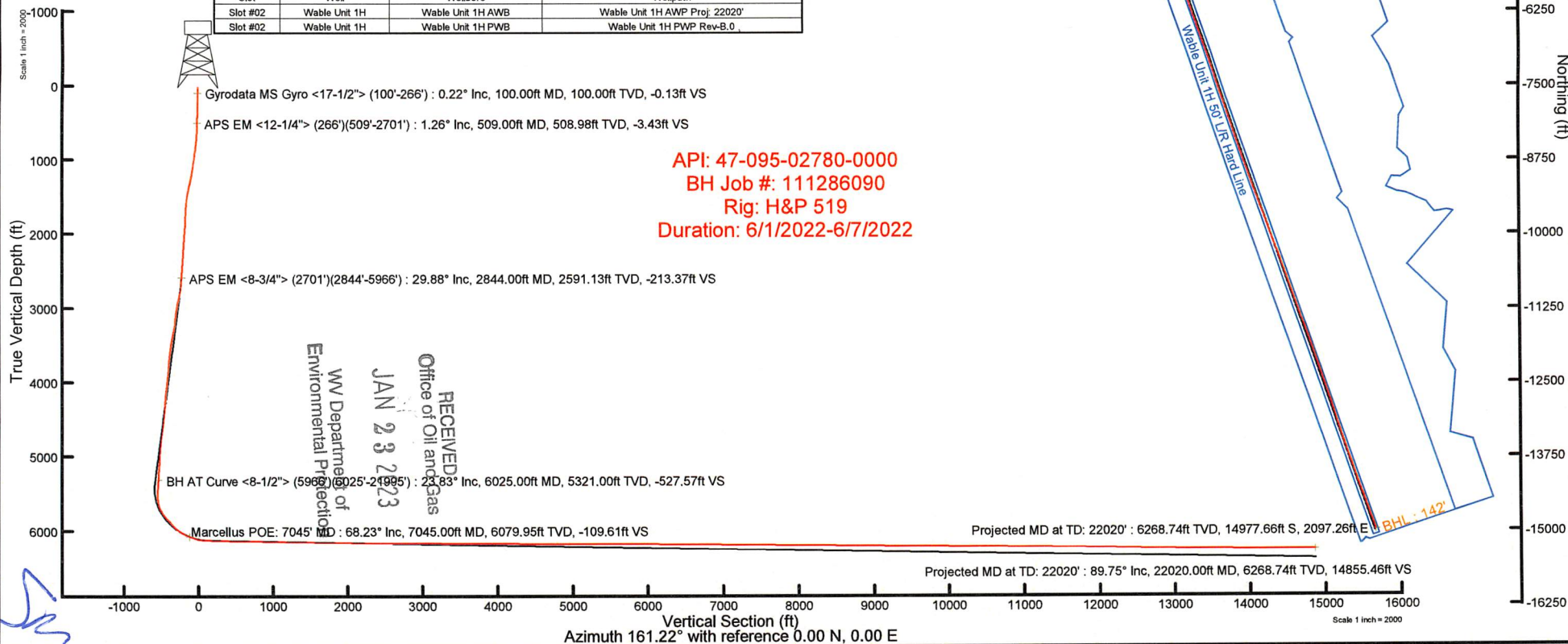
Slot: Slot #02  
Well: Wable Unit 1H  
Wellbore: Wable Unit 1H PWB

Plot reference wellpath is Wable Unit 1H PWP Rev-B.0	Grid System: NAD27 / UTM Zone 17 North, US feet
True vertical depths are referenced to H&P 519 (RKB)	North Reference: Grid north
Reference wellpath measured depths are referenced to H&P 519 (RKB)	Scale: True distance
H&P 519 (RKB) to Mean Sea Level: 1002 feet	Coordinates are in feet referenced to Slot
Mean Sea Level to Ground level (At Slot #02): -972 feet	Depths are in feet
Offset wellpath MDs are referenced to each path's default MD datum	Created by: edjaryar on 2022-06-14; Database: WA_MPL_EASTERNUS_Defn

Location Information				
Facility Name	Grid East (US ft)	Grid North (US ft)	Latitude	Longitude
Nalley Pad	1653163.370	14360203.730	39°32'40.3242"N	80°57'17.2242"W
Slot	Local N (ft)	Local E (ft)	Grid East (US ft)	Grid North (US ft)
Slot #02	-16.11	-5.24	1653158.130	14360187.630
Comment	Wable Unit 1H			
H&P 519 (RKB) to Ground level (At Slot: Slot #02)				30ft
Mean Sea Level to Ground level (At Slot: Slot #02)				-972ft
H&P 519 (RKB) to Mean Sea Level				1002ft

Well Profile Data								
Design Comment	MD (ft)	Inc (")	Az (°)	TVD (ft)	Local N (ft)	Local E (ft)	DLS (°/100ft)	VS (ft)
Tie On	2701.00	30.390	258.890	2467.45	-82.78	-881.30	0.79	-205.35
Proj. to Bottom	2790.00	30.390	258.890	2544.22	-91.46	-925.48	0.00	-211.36
Drill Out	2870.00	30.390	258.890	2613.23	-99.25	-965.20	0.00	-216.79
End of 3D Arc	2958.74	31.074	263.926	2689.52	-106.00	-1010.00	3.00	-224.79
Curve KOP	6087.34	31.074	263.926	5369.17	-276.86	-2615.74	0.00	-579.98
POE	7068.51	69.103	161.224	6079.00	-826.33	-2740.10	8.00	-99.80
Landing Pt.	7317.23	89.000	161.224	6126.00	-1056.37	-2661.90	8.00	143.17
BHL	22039.00	89.000	161.224	6382.93	-14992.59	2075.85	0.00	14862.70

Well Data			
Slot	Well	Wellbore	Wellpath
Slot #02	Wable Unit 1H	Wable Unit 1H AWB	Wable Unit 1H AWB Proj: 22020'
Slot #02	Wable Unit 1H	Wable Unit 1H PWB	Wable Unit 1H PWP Rev-B.0





# Actual Wellpath Report

Wable Unit 1H AWP Proj: 22020'

Page 1 of 12



REFERENCE WELLPATH IDENTIFICATION			
Operator	ANTERO RESOURCES CORPORATION	Well	Wable Unit 1H
Field	Tyler	API	47-095-02780-0000
Facility	Nalley Pad	Wellbore	Wable Unit 1H AWB
Slot	Slot #02		

REPORT SETUP INFORMATION			
Projection System	NAD27 / UTM Zone 17 North, US feet	Software System	WellArchitect® 6.0
North Reference	Grid	User	Edsaryar
Scale	0.999600	Report Generated	6/14/2022 at 11:40:40 AM
Convergence at slot	0.03° East	Database	WA_MPL_EASTERNUS_Defn

WELLPATH LOCATION						
	Local coordinates		Grid coordinates		Geographic coordinates	
	North[ft]	East[ft]	Easting[US ft]	Northing[US ft]	Latitude	Longitude
Slot Location	-16.11	-5.24	1653158.13	14360187.63	39°32'40.1651"N	80°57'17.2912"W
Facility Reference Pt			1653163.37	14360203.73	39°32'40.3242"N	80°57'17.2242"W
Field Reference Pt			0.00	0.00	0°00'0.0000"	85°29'19.3013"W

WELLPATH DATUM			
Calculation method	Minimum curvature	H&P 519 (RKB) to Facility Vertical Datum	1002.00ft
Horizontal Reference Pt	Slot	H&P 519 (RKB) to Mean Sea Level	1002.00ft
Vertical Reference Pt	H&P 519 (RKB)	H&P 519 (RKB) to Ground Level at Slot (Slot #02)	30.00ft
MD Reference Pt	H&P 519 (RKB)	Section Origin	N 0.00, E 0.00 ft
Field Vertical Reference	Mean Sea Level	Section Azimuth	161.22°

RECEIVED  
 Office of Oil and Gas  
 JAN 23 2023  
 WV Department of  
 Environmental Protection

SM



# Actual Wellpath Report

Wable Unit 1H AWP Proj: 22020'

Page 2 of 12



## REFERENCE WELLPATH IDENTIFICATION

Operator	ANTERO RESOURCES CORPORATION	Well	Wable Unit 1H
Field	Tyler	API	47-095-02780-0000
Facility	Nalley Pad	Wellbore	Wable Unit 1H AWP
Slot	Slot #02		

## WELLPATH DATA (234 stations) † = interpolated, ‡ = extrapolated station

MD [ft]	Inclination [°]	Azimuth [°]	TVD [ft]	Vert Sect [ft]	North [ft]	East [ft]	Grid East [US ft]	Grid North [US ft]	Latitude	Longitude	Closure Dist [ft]	Closure Dir [°]	DLS ["/100ft]	Build Rate ["/100ft]	Turn Rate ["/100ft]	Comments
0.00†	0.000	334.450	0.00	0.00	0.00	0.00	1653158.13	14360187.63	39°32'40.1651"N	80°57'17.2912"W	0.00	0.000	0.00	0.00	0.00	
30.00	0.000	334.450	30.00	0.00	0.00	0.00	1653158.13	14360187.63	39°32'40.1651"N	80°57'17.2912"W	0.00	0.000	0.00	0.00	0.00	
100.00	0.220	334.450	100.00	-0.13	0.12	-0.06	1653158.07	14360187.75	39°32'40.1663"N	80°57'17.2920"W	0.13	334.450	0.31	0.31	0.00	Gyrodata MS Gyro <17-1/2"> (100'-266')
200.00	0.260	348.710	200.00	-0.55	0.52	-0.19	1653157.94	14360188.15	39°32'40.1702"N	80°57'17.2936"W	0.55	340.292	0.07	0.04	14.26	
266.00	0.370	8.090	266.00	-0.89	0.87	-0.18	1653157.95	14360188.50	39°32'40.1737"N	80°57'17.2936"W	0.89	348.090	0.23	0.17	29.36	
509.00	1.260	294.950	508.98	-3.43	2.78	-2.50	1653155.63	14360190.41	39°32'40.1925"N	80°57'17.3231"W	3.74	318.061	0.50	0.37	-30.10	APS EM <12-1/4"> (266')(509'-2701')
599.00	3.410	293.690	598.90	-5.93	4.27	-5.85	1653152.29	14360191.90	39°32'40.2073"N	80°57'17.3658"W	7.24	306.159	2.39	2.39	-1.40	
688.00	5.760	296.000	687.60	-10.86	7.29	-12.28	1653145.85	14360194.92	39°32'40.2372"N	80°57'17.4480"W	14.29	300.699	2.65	2.64	2.60	
778.00	8.350	292.460	776.92	-18.35	11.77	-22.38	1653135.75	14360199.40	39°32'40.2815"N	80°57'17.5769"W	25.29	297.737	2.92	2.88	-3.93	
868.00	12.540	287.890	865.41	-28.50	17.27	-37.73	1653120.42	14360204.89	39°32'40.3359"N	80°57'17.7727"W	41.49	294.597	4.74	4.66	-5.08	
1145.00	17.330	281.350	1132.99	-67.19	34.64	-106.84	1653051.33	14360222.26	39°32'40.5079"N	80°57'18.6548"W	112.31	287.964	1.83	1.73	-2.36	
1240.00	19.930	279.190	1223.00	-81.89	40.01	-136.70	1653021.48	14360227.62	39°32'40.5612"N	80°57'19.0359"W	142.44	286.314	2.83	2.74	-2.27	
1334.00	24.870	278.760	1309.89	-98.55	45.58	-172.07	1652986.12	14360233.19	39°32'40.6164"N	80°57'19.4874"W	178.01	284.837	5.26	5.26	-0.46	
1429.00	27.730	276.100	1395.05	-117.09	50.98	-213.80	1652944.41	14360238.58	39°32'40.6699"N	80°57'20.0201"W	219.80	283.410	3.26	3.01	-2.80	
1713.00	34.220	258.170	1638.93	-154.67	41.60	-358.13	1652800.15	14360229.21	39°32'40.5779"N	80°57'21.8624"W	360.53	276.625	3.95	2.29	-6.31	
1807.00	34.540	256.000	1716.52	-160.09	29.73	-409.86	1652748.44	14360217.35	39°32'40.4609"N	80°57'22.5228"W	410.93	274.149	1.35	0.34	-2.31	
1902.00	34.250	254.280	1794.91	-163.76	15.97	-461.72	1652696.59	14360203.59	39°32'40.3252"N	80°57'23.1849"W	462.00	271.981	1.07	-0.31	-1.81	
1996.00	33.240	254.660	1873.07	-166.72	1.99	-512.03	1652646.31	14360189.62	39°32'40.1872"N	80°57'23.8272"W	512.03	270.222	1.10	-1.07	0.40	
2091.00	33.250	257.500	1952.53	-171.13	-10.54	-562.57	1652595.79	14360177.10	39°32'40.0636"N	80°57'24.4724"W	562.67	268.927	1.64	0.01	2.99	
2186.00	33.760	257.660	2031.74	-176.94	-21.82	-613.78	1652544.59	14360165.82	39°32'39.9524"N	80°57'25.1262"W	614.17	267.964	0.54	0.54	0.17	
2469.00	32.190	255.710	2269.15	-191.67	-57.23	-763.66	1652394.77	14360130.42	39°32'39.6031"N	80°57'27.0396"W	765.80	265.714	0.67	-0.55	-0.69	
2564.00	31.430	257.480	2349.88	-196.35	-68.85	-812.37	1652346.09	14360118.81	39°32'39.4885"N	80°57'27.6614"W	815.28	265.156	1.27	-0.80	1.86	
2658.00	30.680	259.240	2430.41	-202.37	-78.64	-859.85	1652298.62	14360109.02	39°32'39.3920"N	80°57'28.2676"W	863.44	264.775	1.25	-0.80	1.87	
2701.00	30.390	258.890	2467.45	-205.35	-82.78	-881.30	1652277.18	14360104.88	39°32'39.3511"N	80°57'28.5414"W	885.18	264.634	0.79	-0.67	-0.81	
2844.00	29.880	256.360	2591.13	-213.37	-98.15	-951.41	1652207.10	14360089.52	39°32'39.1996"N	80°57'29.4365"W	956.46	264.110	0.96	-0.36	-1.77	APS EM <8-3/4"> (2701')(2844'-5966')
2939.00	30.550	258.740	2673.22	-218.65	-108.45	-998.09	1652160.44	14360079.23	39°32'39.0980"N	80°57'30.0324"W	1003.97	263.799	1.44	0.71	2.51	
3034.00	32.600	265.250	2754.18	-228.02	-115.28	-1047.30	1652111.26	14360072.39	39°32'39.0307"N	80°57'30.6605"W	1053.62	263.718	4.18	2.16	6.85	
3128.00	34.100	272.070	2832.72	-243.54	-116.43	-1098.88	1652059.69	14360071.25	39°32'39.0196"N	80°57'31.3190"W	1105.04	263.952	4.29	1.60	7.26	
3223.00	33.600	269.250	2911.63	-261.16	-115.81	-1151.78	1652006.81	14360071.87	39°32'39.0259"N	80°57'31.9943"W	1157.59	264.258	1.74	-0.53	-2.97	
3318.00	33.450	267.060	2990.83	-276.44	-117.50	-1204.22	1651954.40	14360070.18	39°32'39.0095"N	80°57'32.6636"W	1209.94	264.427	1.28	-0.16	-2.31	

RECEIVED  
 Office of Oil and Gas  
 JAN 23 2023  
 WV Department of  
 Environmental Protection



# Actual Wellpath Report

Wable Unit 1H AWP Proj: 22020'  
Page 3 of 12



REFERENCE WELLPATH IDENTIFICATION				
Operator	ANTERO RESOURCES CORPORATION		Well	Wable Unit 1H
Field	Tyler		API	47-095-02780-0000
Facility	Nalley Pad		Wellbore	Wable Unit 1H AWB
Slot	Slot #02			

WELLPATH DATA (234 stations)																
MD [ft]	Inclination [°]	Azimuth [°]	TVD [ft]	Vert Sect [ft]	North [ft]	East [ft]	Grid East [US ft]	Grid North [US ft]	Latitude	Longitude	Closure Dist [ft]	Closure Dir [°]	DLS ["/100ft]	Build Rate ["/100ft]	Turn Rate ["/100ft]	Comments
3415.00	33.160	263.490	3071.90	-289.37	-121.88	-1257.28	1651901.36	14360065.80	39°32'38.9665"N	80°57'33.3410"W	1263.17	264.463	2.04	-0.30	-3.68	
3509.00	32.860	260.770	3150.73	-299.07	-128.88	-1308.00	1651850.66	14360058.80	39°32'38.8974"N	80°57'33.9884"W	1314.33	264.373	1.61	-0.32	-2.89	
3604.00	31.910	262.110	3230.96	-308.09	-136.46	-1358.31	1651800.37	14360051.22	39°32'38.8227"N	80°57'34.6306"W	1365.15	264.263	1.25	-1.00	1.41	
3698.00	29.700	272.490	3311.75	-321.24	-138.86	-1406.22	1651752.47	14360048.82	39°32'38.7992"N	80°57'35.2423"W	1413.06	264.360	6.12	-2.35	11.04	
3792.00	29.110	270.990	3393.64	-337.42	-137.46	-1452.35	1651706.37	14360050.23	39°32'38.8133"N	80°57'35.8311"W	1458.84	264.593	1.00	-0.63	-1.60	
3887.00	28.460	269.410	3476.90	-352.31	-137.29	-1498.09	1651660.64	14360050.39	39°32'38.8152"N	80°57'36.4149"W	1504.37	264.764	1.05	-0.68	-1.66	
3981.00	29.950	264.200	3558.96	-364.57	-139.89	-1543.84	1651614.91	14360047.79	39°32'38.7897"N	80°57'36.9989"W	1550.16	264.822	3.13	1.59	-5.54	
4075.00	32.040	262.980	3639.54	-374.92	-145.31	-1591.94	1651566.83	14360042.38	39°32'38.7363"N	80°57'37.6129"W	1598.56	264.784	2.32	2.22	-1.30	
4170.00	31.520	258.600	3720.31	-383.25	-153.30	-1641.30	1651517.49	14360034.39	39°32'38.6576"N	80°57'38.2430"W	1648.44	264.664	2.49	-0.55	-4.61	
4265.00	31.700	258.420	3801.21	-389.57	-163.22	-1690.09	1651468.72	14360024.48	39°32'38.5597"N	80°57'38.8660"W	1697.96	264.484	0.21	0.19	-0.19	
4359.00	31.910	261.610	3881.10	-397.15	-171.80	-1738.87	1651419.96	14360015.90	39°32'38.4751"N	80°57'39.4886"W	1747.33	264.357	1.80	0.22	3.39	
4454.00	31.240	259.650	3962.04	-405.29	-179.89	-1787.94	1651370.91	14360007.81	39°32'38.3954"N	80°57'40.1151"W	1796.97	264.255	1.29	-0.71	-2.06	
4548.00	30.140	259.910	4042.87	-412.42	-188.41	-1835.16	1651323.71	14359999.30	39°32'38.3114"N	80°57'40.7178"W	1844.80	264.138	1.18	-1.17	0.28	
4643.00	31.030	265.090	4124.67	-421.90	-194.68	-1883.04	1651275.84	14359993.03	39°32'38.2496"N	80°57'41.3291"W	1893.08	264.097	2.93	0.94	5.45	
4737.00	29.490	260.060	4205.87	-431.27	-200.75	-1929.98	1651228.92	14359986.96	39°32'38.1898"N	80°57'41.9283"W	1940.40	264.062	3.15	-1.64	-5.35	
4832.00	29.230	258.410	4288.67	-437.76	-209.45	-1975.74	1651183.19	14359978.27	39°32'38.1041"N	80°57'42.5124"W	1986.81	263.949	0.89	-0.27	-1.74	
4927.00	30.320	260.750	4371.13	-444.64	-217.96	-2022.13	1651136.81	14359969.75	39°32'38.0201"N	80°57'43.1047"W	2033.84	263.848	1.68	1.15	2.46	
5021.00	29.120	259.220	4452.77	-451.75	-226.06	-2068.02	1651090.94	14359961.67	39°32'37.9403"N	80°57'43.6905"W	2080.34	263.762	1.51	-1.28	-1.63	
5116.00	29.570	263.340	4535.58	-459.89	-233.10	-2114.01	1651044.97	14359954.63	39°32'37.8709"N	80°57'44.2776"W	2126.83	263.708	2.18	0.47	4.34	
5210.00	29.520	262.700	4617.36	-469.37	-238.73	-2160.02	1650998.98	14359948.99	39°32'37.8154"N	80°57'44.8649"W	2173.17	263.693	0.34	-0.05	-0.68	
5305.00	32.370	264.140	4698.83	-479.71	-244.30	-2208.55	1650950.47	14359943.43	39°32'37.7606"N	80°57'45.4844"W	2222.02	263.688	3.10	3.00	1.52	
5400.00	34.270	262.830	4778.21	-490.78	-250.24	-2260.39	1650898.65	14359937.49	39°32'37.7021"N	80°57'46.1461"W	2274.20	263.683	2.14	2.00	-1.38	
5494.00	33.050	260.340	4856.46	-500.17	-257.84	-2311.92	1650847.14	14359929.89	39°32'37.6272"N	80°57'46.8040"W	2326.25	263.636	1.96	-1.30	-2.65	
5589.00	31.380	256.670	4936.84	-506.63	-267.89	-2361.53	1650797.55	14359919.84	39°32'37.5280"N	80°57'47.4373"W	2376.68	263.528	2.71	-1.76	-3.86	
5683.00	28.990	254.500	5018.09	-510.26	-279.63	-2407.30	1650751.79	14359908.12	39°32'37.4123"N	80°57'48.0216"W	2423.49	263.374	2.79	-2.54	-2.31	
5778.00	28.960	256.340	5101.20	-513.63	-291.21	-2451.84	1650707.28	14359896.54	39°32'37.2979"N	80°57'48.5902"W	2469.07	263.227	0.94	-0.03	1.94	
5873.00	28.260	262.380	5184.61	-520.03	-299.63	-2496.49	1650662.64	14359888.12	39°32'37.2150"N	80°57'49.1602"W	2514.40	263.156	3.13	-0.74	6.36	
5966.00	25.830	255.400	5267.46	-525.77	-307.66	-2537.93	1650621.22	14359880.10	39°32'37.1358"N	80°57'49.6892"W	2556.51	263.088	4.29	-2.61	-7.51	
6025.00	23.830	255.350	5321.00	-527.57	-313.91	-2561.91	1650597.25	14359873.85	39°32'37.0740"N	80°57'49.9953"W	2581.07	263.014	3.39	-3.39	-0.08	BH AT Curve <8-1/2"> (5966')(6025'-21995')
6083.00	23.470	259.740	5374.14	-530.12	-318.93	-2584.61	1650574.56	14359868.83	39°32'37.0245"N	80°57'50.2851"W	2604.21	262.965	3.10	-0.62	7.57	

RECEIVED  
Office of Oil and Gas  
JAN 23 2023  
WV Department of  
Environmental Protection



# Actual Wellpath Report

Wable Unit 1H AWP Proj: 22020'  
Page 4 of 12



REFERENCE WELLPATH IDENTIFICATION			
Operator	ANTERO RESOURCES CORPORATION	Well	Wable Unit 1H
Field	Tyler	API	47-095-02780-0000
Facility	Nalley Pad	Wellbore	Wable Unit 1H AWB
Slot	Slot #02		

WELLPATH DATA (234 stations) † = interpolated, ‡ = extrapolated station																
MD	Inclination	Azimuth	TVD	Vert Sect	North	East	Grid East	Grid North	Latitude	Longitude	Closure Dist	Closure Dir	DLS	Build Rate	Turn Rate	Comments
[ft]	[°]	[°]	[ft]	[ft]	[ft]	[ft]	[US ft]	[US ft]			[ft]	[°]	[°/100ft]	[°/100ft]	[°/100ft]	
6178.00	28.030	259.760	5459.68	-536.25	-326.27	-2625.21	1650533.97	14359861.49	39°32'36.9521"N	80°57'50.8034"W	2645.41	262.915	4.80	4.80	0.02	
6272.00	29.220	248.730	5542.25	-538.53	-338.53	-2668.36	1650490.84	14359849.23	39°32'36.8311"N	80°57'51.3542"W	2689.75	262.770	5.75	1.27	-11.73	
6367.00	32.320	234.500	5623.97	-530.20	-361.73	-2710.71	1650448.51	14359826.05	39°32'36.6020"N	80°57'51.8949"W	2734.74	262.399	8.31	3.26	-14.98	
6461.00	35.830	215.830	5702.04	-506.97	-398.74	-2747.38	1650411.85	14359789.05	39°32'36.2364"N	80°57'52.3633"W	2776.17	261.742	11.69	3.73	-19.86	
6555.00	39.620	196.160	5776.65	-466.30	-450.04	-2771.93	1650387.31	14359737.77	39°32'35.7295"N	80°57'52.6769"W	2808.23	260.778	13.37	4.03	-20.93	
6650.00	45.320	177.150	5846.98	-408.71	-513.18	-2778.72	1650380.53	14359674.66	39°32'35.1055"N	80°57'52.7638"W	2825.71	259.536	14.73	6.00	-20.01	
6700.00†	45.444	183.260	5882.12	-375.09	-548.74	-2778.84	1650380.40	14359639.11	39°32'34.7540"N	80°57'52.7656"W	2832.51	258.830	8.70	0.25	12.22	Sycamore: 6700' MD
6744.00	45.820	188.590	5912.90	-346.53	-580.00	-2782.09	1650377.15	14359607.86	39°32'34.4451"N	80°57'52.8073"W	2841.91	258.224	8.70	0.86	12.11	
6836.00†	49.651	182.991	5974.79	-284.63	-647.68	-2788.86	1650370.39	14359540.21	39°32'33.7762"N	80°57'52.8939"W	2863.08	256.925	6.13	4.16	-6.09	Middlesex: 6836' MD
6839.00	49.780	182.820	5976.73	-282.50	-649.97	-2788.97	1650370.28	14359537.92	39°32'33.7536"N	80°57'52.8954"W	2863.71	256.881	6.13	4.31	-5.72	
6934.00	59.980	173.710	6031.39	-208.33	-727.39	-2786.24	1650373.01	14359460.54	39°32'32.9884"N	80°57'52.8609"W	2879.62	255.369	13.28	10.74	-9.59	
6981.00†	63.373	169.538	6053.69	-167.65	-768.30	-2780.19	1650379.06	14359419.64	39°32'32.5841"N	80°57'52.7839"W	2884.40	254.552	10.64	7.22	-8.88	Burkett: 6981' MD
7028.00	66.880	165.610	6073.46	-125.29	-809.92	-2771.00	1650388.24	14359378.04	39°32'32.1727"N	80°57'52.6668"W	2886.94	253.707	10.64	7.46	-8.36	
7045.00†	68.228	164.765	6079.95	-109.61	-825.10	-2766.98	1650392.26	14359362.86	39°32'32.0226"N	80°57'52.6156"W	2887.39	253.396	9.16	7.93	-4.97	Marcellus POE: 7045' MD
7123.00	74.460	161.070	6104.90	-35.79	-895.68	-2745.25	1650413.99	14359292.31	39°32'31.3249"N	80°57'52.3385"W	2887.67	251.930	9.16	7.99	-4.74	
7217.00	83.960	159.070	6122.48	56.41	-982.38	-2713.79	1650445.43	14359205.65	39°32'30.4680"N	80°57'51.9374"W	2886.12	250.100	10.32	10.11	-2.13	
7312.00	88.890	159.170	6128.40	151.14	-1070.94	-2680.00	1650479.20	14359117.12	39°32'29.5926"N	80°57'51.5066"W	2886.06	248.218	5.19	5.19	0.11	
7407.00	88.490	156.350	6130.57	245.93	-1158.84	-2644.06	1650515.13	14359029.26	39°32'28.7237"N	80°57'51.0482"W	2886.86	246.333	3.00	-0.42	-2.97	
7502.00	88.180	159.580	6133.33	340.72	-1246.85	-2608.44	1650550.74	14358941.28	39°32'27.8537"N	80°57'50.5940"W	2891.12	244.452	3.41	-0.33	3.40	
7596.00	88.650	159.830	6135.93	434.65	-1334.98	-2575.85	1650583.32	14358853.18	39°32'26.9825"N	80°57'50.1785"W	2901.24	242.604	0.57	0.50	0.27	
7691.00	88.680	159.980	6138.15	529.60	-1424.17	-2543.22	1650615.94	14358764.03	39°32'26.1009"N	80°57'49.7624"W	2914.83	240.752	0.16	0.03	0.16	
7785.00	88.550	159.130	6140.42	623.54	-1512.23	-2510.39	1650648.75	14358676.01	39°32'25.2305"N	80°57'49.3439"W	2930.68	238.936	0.91	-0.14	-0.90	
7880.00	90.000	161.230	6141.62	718.50	-1601.59	-2478.19	1650680.94	14358586.69	39°32'24.3472"N	80°57'48.9332"W	2950.67	237.126	2.69	1.53	2.21	
7974.00	89.660	160.530	6141.90	812.50	-1690.40	-2447.40	1650711.72	14358497.91	39°32'23.4693"N	80°57'48.5407"W	2974.42	235.367	0.83	-0.36	-0.74	
8068.00	89.630	159.580	6142.48	906.48	-1778.76	-2415.33	1650743.77	14358409.59	39°32'22.5959"N	80°57'48.1319"W	2999.63	233.630	1.01	-0.03	-1.01	
8163.00	89.320	159.330	6143.35	1001.43	-1867.71	-2381.99	1650777.09	14358320.67	39°32'21.7167"N	80°57'47.7068"W	3026.92	231.900	0.42	-0.33	-0.26	
8258.00	87.660	155.500	6145.86	1096.17	-1955.38	-2345.53	1650813.54	14358233.04	39°32'20.8501"N	80°57'47.2419"W	3053.69	230.183	4.39	-1.79	-4.03	
8353.00	88.490	158.810	6149.05	1190.86	-2042.86	-2308.67	1650850.38	14358145.59	39°32'19.9853"N	80°57'46.7719"W	3082.74	228.496	3.59	0.87	3.48	
8447.00	88.800	159.680	6151.27	1284.78	-2130.74	-2275.37	1650883.67	14358057.75	39°32'19.1167"N	80°57'46.3473"W	3117.27	226.880	0.98	0.33	0.93	
8542.00	89.630	160.870	6152.57	1379.75	-2220.15	-2243.31	1650915.72	14357968.37	39°32'18.2328"N	80°57'45.9386"W	3156.19	225.297	1.53	0.87	1.25	

RECEIVED  
Office of Oil and Gas  
JAN 23 2023  
WV Department of  
Environmental Protection



# Actual Wellpath Report

Wable Unit 1H AWP Proj: 22020'

Page 5 of 12



## REFERENCE WELLPATH IDENTIFICATION

Operator	ANTERO RESOURCES CORPORATION	Well	Wable Unit 1H
Field	Tyler	API	47-095-02780-0000
Facility	Nalley Pad	Wellbore	Wable Unit 1H AWB
Slot	Slot #02		

## WELLPATH DATA (234 stations)

MD [ft]	Inclination [°]	Azimuth [°]	TVD [ft]	Vert Sect [ft]	North [ft]	East [ft]	Grid East [US ft]	Grid North [US ft]	Latitude	Longitude	Closure Dist [ft]	Closure Dir [°]	DLS ["/100ft]	Build Rate ["/100ft]	Turn Rate ["/100ft]	Comments
8636.00	88.980	160.190	6153.71	1473.74	-2308.77	-2211.99	1650947.03	14357879.79	39°32'17.3569"N	80°57'45.5392"W	3197.39	223.774	1.00	-0.69	-0.72	
8731.00	88.280	158.870	6155.99	1568.67	-2397.74	-2178.77	1650980.23	14357790.85	39°32'16.4774"N	80°57'45.1158"W	3239.79	222.261	1.57	-0.74	-1.39	
8825.00	89.510	161.540	6157.80	1662.62	-2486.16	-2146.95	1651012.04	14357702.47	39°32'15.6034"N	80°57'44.7100"W	3284.87	220.813	3.13	1.31	2.84	
8920.00	89.660	162.220	6158.49	1757.61	-2576.45	-2117.40	1651041.58	14357612.22	39°32'14.7109"N	80°57'44.3334"W	3334.89	219.414	0.73	0.16	0.72	
9015.00	89.780	164.020	6158.95	1852.56	-2667.35	-2089.82	1651069.15	14357521.35	39°32'13.8124"N	80°57'43.9818"W	3388.53	218.078	1.90	0.13	1.89	
9109.00	88.950	163.640	6159.99	1946.45	-2757.62	-2063.65	1651095.31	14357431.11	39°32'12.9201"N	80°57'43.6482"W	3444.29	216.809	0.97	-0.88	-0.40	
9204.00	88.680	162.780	6161.96	2041.37	-2848.55	-2036.21	1651122.74	14357340.22	39°32'12.0213"N	80°57'43.2985"W	3501.49	215.558	0.95	-0.28	-0.91	
9298.00	90.150	164.280	6162.92	2135.29	-2938.69	-2009.56	1651149.38	14357250.12	39°32'11.1303"N	80°57'42.9589"W	3560.09	214.365	2.23	1.56	1.60	
9393.00	89.020	163.380	6163.61	2230.18	-3029.92	-1983.11	1651175.82	14357158.92	39°32'10.2285"N	80°57'42.6218"W	3621.21	213.205	1.52	-1.19	-0.95	
9487.00	89.350	162.330	6164.94	2324.14	-3119.74	-1955.40	1651203.52	14357069.15	39°32'9.3408"N	80°57'42.2686"W	3681.89	212.079	1.17	0.35	-1.12	
9582.00	90.000	162.370	6165.48	2419.11	-3210.26	-1926.60	1651232.31	14356978.66	39°32'8.4459"N	80°57'41.9015"W	3744.00	210.970	0.69	0.68	0.04	
9677.00	90.180	162.560	6165.33	2514.09	-3300.85	-1897.97	1651260.92	14356888.11	39°32'7.5505"N	80°57'41.5367"W	3807.61	209.899	0.28	0.19	0.20	
9771.00	89.510	162.570	6165.59	2608.07	-3390.53	-1869.81	1651289.07	14356798.46	39°32'6.6641"N	80°57'41.1777"W	3871.93	208.876	0.71	-0.71	0.01	
9866.00	89.630	161.310	6166.30	2703.05	-3480.84	-1840.36	1651318.51	14356708.18	39°32'5.7713"N	80°57'40.8023"W	3937.41	207.866	1.33	0.13	-1.33	
9961.00	90.250	162.510	6166.40	2798.04	-3571.15	-1810.86	1651348.00	14356617.92	39°32'4.8787"N	80°57'40.4263"W	4004.04	206.889	1.42	0.65	1.26	
10056.00	89.660	162.400	6166.47	2893.02	-3661.73	-1782.22	1651376.62	14356527.37	39°32'3.9834"N	80°57'40.0613"W	4072.41	205.953	0.63	-0.62	-0.12	
10150.00	88.920	161.290	6167.64	2987.01	-3751.04	-1752.94	1651405.90	14356438.10	39°32'3.1006"N	80°57'39.6880"W	4140.42	205.048	1.42	-0.79	-1.18	
10245.00	90.280	162.850	6168.30	3081.99	-3841.42	-1723.69	1651435.13	14356347.76	39°32'2.2072"N	80°57'39.3153"W	4210.42	204.166	2.18	1.43	1.64	
10340.00	89.630	161.630	6168.38	3176.97	-3931.89	-1694.72	1651464.09	14356257.32	39°32'1.3129"N	80°57'38.9459"W	4281.57	203.317	1.46	-0.68	-1.28	
10434.00	89.630	161.810	6168.98	3270.97	-4021.14	-1665.23	1651493.57	14356168.10	39°32'0.4307"N	80°57'38.5701"W	4352.31	202.495	0.19	0.00	0.19	
10529.00	89.350	161.790	6169.83	3365.96	-4111.39	-1635.56	1651523.22	14356077.90	39°31'59.5386"N	80°57'38.1920"W	4424.77	201.693	0.30	-0.29	-0.02	
10623.00	89.910	161.480	6170.44	3459.95	-4200.60	-1605.95	1651552.83	14355988.72	39°31'58.6568"N	80°57'37.8145"W	4497.12	200.923	0.68	0.60	-0.33	
10718.00	89.850	162.060	6170.64	3554.95	-4290.83	-1576.23	1651582.54	14355898.53	39°31'57.7649"N	80°57'37.4357"W	4571.18	200.171	0.61	-0.06	0.61	
10812.00	89.510	161.320	6171.16	3648.94	-4380.07	-1546.70	1651612.05	14355809.32	39°31'56.8828"N	80°57'37.0593"W	4645.13	199.449	0.87	-0.36	-0.79	
10907.00	90.000	162.080	6171.57	3743.94	-4470.26	-1516.87	1651641.87	14355719.17	39°31'55.9913"N	80°57'36.6791"W	4720.60	198.743	0.95	0.52	0.80	
11001.00	89.510	161.380	6171.97	3837.93	-4559.52	-1487.40	1651671.33	14355629.94	39°31'55.1089"N	80°57'36.3035"W	4796.00	198.067	0.91	-0.52	-0.74	
11096.00	89.600	161.460	6172.71	3932.93	-4649.56	-1457.13	1651701.58	14355539.93	39°31'54.2189"N	80°57'35.9177"W	4872.54	197.401	0.13	0.09	0.08	
11190.00	89.910	161.530	6173.11	4026.93	-4738.70	-1427.30	1651731.41	14355450.83	39°31'53.3377"N	80°57'35.5375"W	4948.99	196.762	0.34	0.33	0.07	
11285.00	89.660	161.140	6173.46	4121.92	-4828.71	-1396.90	1651761.80	14355360.86	39°31'52.4481"N	80°57'35.1500"W	5026.70	196.135	0.49	-0.26	-0.41	
11379.00	89.170	161.250	6174.42	4215.92	-4917.68	-1366.60	1651792.08	14355271.92	39°31'51.5686"N	80°57'34.7638"W	5104.04	195.530	0.53	-0.52	0.12	

RECEIVED  
 Office of Oil and Gas  
 JAN 23 2023  
 WV Department of  
 Environmental Protection



# Actual Wellpath Report

Wable Unit 1H AWP Proj: 22020'  
Page 6 of 12



REFERENCE WELLPATH IDENTIFICATION			
Operator	ANTERO RESOURCES CORPORATION	Well	Wable Unit 1H
Field	Tyler	API	47-095-02780-0000
Facility	Nalley Pad	Wellbore	Wable Unit 1H AWB
Slot	Slot #02		

WELLPATH DATA (234 stations)																
MD [ft]	Inclination [°]	Azimuth [°]	TVD [ft]	Vert Sect [ft]	North [ft]	East [ft]	Grid East [US ft]	Grid North [US ft]	Latitude	Longitude	Closure Dist [ft]	Closure Dir [°]	DLS ["/100ft]	Build Rate ["/100ft]	Turn Rate ["/100ft]	Comments
11474.00	89.260	161.530	6175.73	4310.91	-5007.71	-1336.28	1651822.38	14355181.93	39°31'50.6787"N	80°57'34.3774"W	5182.93	194.941	0.31	0.09	0.29	
11569.00	89.320	161.120	6176.90	4405.90	-5097.70	-1305.87	1651852.79	14355091.98	39°31'49.7891"N	80°57'33.9898"W	5262.30	194.368	0.44	0.06	-0.43	
11663.00	89.350	161.640	6177.99	4499.90	-5186.77	-1275.85	1651882.79	14355002.94	39°31'48.9087"N	80°57'33.6073"W	5341.39	193.819	0.55	0.03	0.55	
11758.00	90.860	162.180	6177.82	4594.89	-5277.07	-1246.36	1651912.27	14354912.68	39°31'48.0161"N	80°57'33.2313"W	5422.26	193.289	1.69	1.59	0.57	
11853.00	89.630	161.840	6177.41	4689.87	-5367.43	-1217.02	1651941.60	14354822.36	39°31'47.1229"N	80°57'32.8574"W	5503.67	192.775	1.34	-1.29	-0.36	
11947.00	89.630	161.420	6178.02	4783.87	-5456.63	-1187.39	1651971.21	14354733.19	39°31'46.2411"N	80°57'32.4799"W	5584.33	192.276	0.45	0.00	-0.45	
12042.00	89.290	161.130	6178.92	4878.86	-5546.60	-1156.90	1652001.70	14354643.26	39°31'45.3518"N	80°57'32.0912"W	5665.97	191.782	0.47	-0.36	-0.31	
12136.00	90.220	161.370	6179.32	4972.86	-5635.61	-1126.68	1652031.90	14354554.28	39°31'44.4720"N	80°57'31.7061"W	5747.13	191.306	1.02	0.99	0.26	
12231.00	90.000	161.220	6179.14	5067.86	-5725.59	-1096.22	1652062.35	14354464.34	39°31'43.5825"N	80°57'31.3178"W	5829.59	190.839	0.28	-0.23	-0.16	
12326.00	90.180	161.530	6178.99	5162.86	-5815.62	-1065.88	1652092.68	14354374.35	39°31'42.6927"N	80°57'30.9312"W	5912.49	190.386	0.38	0.19	0.33	
12420.00	89.820	161.290	6178.99	5256.86	-5904.71	-1035.91	1652122.64	14354285.29	39°31'41.8120"N	80°57'30.5493"W	5994.89	189.951	0.46	-0.38	-0.26	
12515.00	89.940	161.280	6179.19	5351.86	-5994.69	-1005.43	1652153.11	14354195.35	39°31'40.9226"N	80°57'30.1608"W	6078.42	189.521	0.13	0.13	-0.01	
12610.00	90.830	160.680	6178.55	5446.86	-6084.50	-974.47	1652184.05	14354105.57	39°31'40.0348"N	80°57'29.7662"W	6162.04	189.099	1.13	0.94	-0.63	
12704.00	89.750	161.300	6178.07	5540.85	-6173.37	-943.85	1652214.66	14354016.74	39°31'39.1563"N	80°57'29.3760"W	6245.11	188.693	1.32	-1.15	0.66	
12799.00	89.690	161.260	6178.54	5635.85	-6263.34	-913.36	1652245.14	14353926.80	39°31'38.2669"N	80°57'28.9874"W	6329.59	188.297	0.08	-0.06	-0.04	
12894.00	89.570	161.060	6179.15	5730.85	-6353.25	-882.68	1652275.80	14353836.93	39°31'37.3782"N	80°57'28.5965"W	6414.28	187.910	0.25	-0.13	-0.21	
12988.00	89.750	161.650	6179.71	5824.85	-6442.32	-852.63	1652305.84	14353747.90	39°31'36.4978"N	80°57'28.2135"W	6498.49	187.539	0.66	0.19	0.63	
13083.00	89.570	161.750	6180.27	5919.84	-6532.51	-822.80	1652335.66	14353657.74	39°31'35.6063"N	80°57'27.8334"W	6584.13	187.179	0.22	-0.19	0.11	
13178.00	89.350	161.330	6181.17	6014.84	-6622.62	-792.72	1652365.72	14353567.67	39°31'34.7156"N	80°57'27.4501"W	6669.89	186.826	0.50	-0.23	-0.44	
13273.00	89.660	161.270	6181.99	6109.83	-6712.60	-762.27	1652396.17	14353477.73	39°31'33.8261"N	80°57'27.0619"W	6755.74	186.479	0.33	0.33	-0.06	
13367.00	89.570	160.600	6182.62	6203.83	-6801.44	-731.56	1652426.86	14353388.92	39°31'32.9479"N	80°57'26.6706"W	6840.67	186.139	0.72	-0.10	-0.71	
13461.00	89.320	159.130	6183.53	6297.79	-6889.69	-699.21	1652459.20	14353300.71	39°31'32.0756"N	80°57'26.2583"W	6925.08	185.795	1.59	-0.27	-1.56	
13556.00	89.750	160.820	6184.30	6392.77	-6978.94	-666.68	1652491.72	14353211.49	39°31'31.1933"N	80°57'25.8437"W	7010.71	185.457	1.84	0.45	1.78	
13650.00	89.720	161.540	6184.73	6486.76	-7067.91	-636.36	1652522.03	14353122.56	39°31'30.3138"N	80°57'25.4573"W	7096.50	185.145	0.77	-0.03	0.77	
13745.00	89.630	161.310	6185.27	6581.76	-7157.96	-606.10	1652552.28	14353032.54	39°31'29.4237"N	80°57'25.0716"W	7183.58	184.840	0.26	-0.09	-0.24	
13839.00	89.570	161.130	6185.93	6675.76	-7246.96	-575.83	1652582.53	14352943.59	39°31'28.5440"N	80°57'24.6860"W	7269.80	184.543	0.20	-0.06	-0.19	
13933.00	89.510	161.360	6186.68	6769.76	-7335.96	-545.61	1652612.74	14352854.62	39°31'27.6642"N	80°57'24.3009"W	7356.22	184.254	0.25	-0.06	0.24	
14028.00	89.350	161.400	6187.63	6864.75	-7425.98	-515.28	1652643.06	14352764.63	39°31'26.7743"N	80°57'23.9144"W	7443.84	183.969	0.17	-0.17	0.04	
14122.00	89.380	159.790	6188.67	6958.74	-7514.64	-484.05	1652674.27	14352676.01	39°31'25.8980"N	80°57'23.5164"W	7530.21	183.686	1.71	0.03	-1.71	
14217.00	89.780	160.780	6189.37	7053.72	-7604.06	-452.01	1652706.30	14352586.62	39°31'25.0140"N	80°57'23.1080"W	7617.49	183.402	1.12	0.42	1.04	

RECEIVED  
Office of Oil and Gas  
JAN 23 2023  
WV Department of  
Environmental Protection



# Actual Wellpath Report

Wable Unit 1H AWP Proj: 22020'  
Page 7 of 12



REFERENCE WELLPATH IDENTIFICATION			
Operator	ANTERO RESOURCES CORPORATION	Well	Wable Unit 1H
Field	Tyler	API	47-095-02780-0000
Facility	Nalley Pad	Wellbore	Wable Unit 1H AWP
Slot	Slot #02		

WELLPATH DATA (234 stations)																
MD [ft]	Inclination [°]	Azimuth [°]	TVD [ft]	Vert Sect [ft]	North [ft]	East [ft]	Grid East [US ft]	Grid North [US ft]	Latitude	Longitude	Closure Dist [ft]	Closure Dir [°]	DLS ["/100ft]	Build Rate ["/100ft]	Turn Rate ["/100ft]	Comments
14311.00	89.320	161.100	6190.11	7147.72	-7692.91	-421.31	1652736.99	14352497.81	39°31'24.1358"N	80°57'22.7169"W	7704.44	183.135	0.60	-0.49	0.34	
14405.00	89.260	161.320	6191.27	7241.71	-7781.89	-391.04	1652767.25	14352408.87	39°31'23.2562"N	80°57'22.3311"W	7791.71	182.877	0.24	-0.06	0.23	
14500.00	89.320	161.260	6192.45	7336.70	-7871.86	-360.56	1652797.71	14352318.93	39°31'22.3668"N	80°57'21.9428"W	7880.12	182.623	0.09	0.06	-0.06	
14594.00	89.170	161.210	6193.69	7430.69	-7960.86	-330.33	1652827.93	14352229.97	39°31'21.4871"N	80°57'21.5575"W	7967.71	182.376	0.17	-0.16	-0.05	
14689.00	89.820	161.450	6194.52	7525.69	-8050.86	-299.92	1652858.33	14352140.01	39°31'20.5975"N	80°57'21.1700"W	8056.44	182.133	0.73	0.68	0.25	
14783.00	89.630	161.290	6194.98	7619.69	-8139.93	-269.89	1652888.35	14352050.97	39°31'19.7170"N	80°57'20.7874"W	8144.40	181.899	0.26	-0.20	-0.17	
14878.00	89.540	162.100	6195.66	7714.68	-8230.12	-240.05	1652918.17	14351960.82	39°31'18.8255"N	80°57'20.4072"W	8233.62	181.671	0.86	-0.09	0.85	
14972.00	89.260	161.010	6196.65	7808.67	-8319.28	-210.32	1652947.90	14351871.69	39°31'17.9441"N	80°57'20.0283"W	8321.94	181.448	1.20	-0.30	-1.16	
15067.00	89.200	161.950	6197.92	7903.66	-8409.36	-180.14	1652978.06	14351781.65	39°31'17.0537"N	80°57'19.6438"W	8411.28	181.227	0.99	-0.06	0.99	
15161.00	89.750	161.860	6198.79	7997.65	-8498.70	-150.95	1653007.24	14351692.34	39°31'16.1706"N	80°57'19.2719"W	8500.04	181.018	0.59	0.59	-0.10	
15255.00	89.570	161.560	6199.34	8091.64	-8587.95	-121.45	1653036.73	14351603.13	39°31'15.2883"N	80°57'18.8960"W	8588.81	180.810	0.37	-0.19	-0.32	
15350.00	89.420	161.390	6200.18	8186.64	-8678.03	-91.27	1653066.90	14351513.09	39°31'14.3980"N	80°57'18.5114"W	8678.51	180.603	0.24	-0.16	-0.18	
15444.00	89.480	161.080	6201.08	8280.64	-8767.03	-61.03	1653097.12	14351424.13	39°31'13.5182"N	80°57'18.1262"W	8767.24	180.399	0.34	0.06	-0.33	
15539.00	89.750	159.690	6201.72	8375.62	-8856.51	-29.14	1653129.00	14351334.68	39°31'12.6336"N	80°57'17.7198"W	8856.56	180.189	1.49	0.28	-1.46	
15634.00	89.780	160.340	6202.11	8470.60	-8945.79	3.33	1653161.46	14351245.44	39°31'11.7511"N	80°57'17.3061"W	8945.79	179.979	0.68	0.03	0.68	
15728.00	89.630	160.980	6202.60	8564.59	-9034.48	34.46	1653192.57	14351156.78	39°31'10.8744"N	80°57'16.9094"W	9034.55	179.781	0.70	-0.16	0.68	
15823.00	89.750	161.240	6203.11	8659.59	-9124.36	65.21	1653223.32	14351066.93	39°31'9.9859"N	80°57'16.5175"W	9124.60	179.591	0.30	0.13	0.27	
15918.00	89.290	160.530	6203.91	8754.59	-9214.12	96.32	1653254.41	14350977.21	39°31'9.0986"N	80°57'16.1212"W	9214.62	179.401	0.89	-0.48	-0.75	
16012.00	89.450	160.260	6204.94	8848.57	-9302.67	127.86	1653285.94	14350888.70	39°31'8.2233"N	80°57'15.7193"W	9303.54	179.213	0.33	0.17	-0.29	
16106.00	89.050	159.180	6206.17	8942.53	-9390.83	160.44	1653318.50	14350800.57	39°31'7.3518"N	80°57'15.3042"W	9392.20	179.021	1.23	-0.43	-1.15	
16201.00	89.320	160.700	6207.52	9037.49	-9480.05	193.02	1653351.07	14350711.39	39°31'6.4698"N	80°57'14.8890"W	9482.02	178.834	1.62	0.28	1.60	
16295.00	89.200	160.470	6208.73	9131.48	-9568.70	224.26	1653382.30	14350622.77	39°31'5.5935"N	80°57'14.4909"W	9571.33	178.657	0.28	-0.13	-0.24	
16390.00	89.350	160.340	6209.94	9226.46	-9658.19	256.12	1653414.15	14350533.32	39°31'4.7089"N	80°57'14.0850"W	9661.59	178.481	0.21	0.16	-0.14	
16485.00	89.630	160.860	6210.78	9321.45	-9747.79	287.67	1653445.69	14350443.75	39°31'3.8232"N	80°57'13.6830"W	9752.04	178.310	0.62	0.29	0.55	
16579.00	89.750	160.570	6211.29	9415.45	-9836.52	318.72	1653476.72	14350355.06	39°31'2.9461"N	80°57'13.2874"W	9841.68	178.144	0.33	0.13	-0.31	
16673.00	89.750	160.560	6211.70	9509.44	-9925.16	349.99	1653507.98	14350266.46	39°31'2.0699"N	80°57'12.8889"W	9931.33	177.980	0.01	0.00	-0.01	
16768.00	89.690	160.530	6212.17	9604.43	-10014.74	381.64	1653539.61	14350176.92	39°31'1.1844"N	80°57'12.4858"W	10022.01	177.818	0.07	-0.06	-0.03	
16863.00	89.480	160.320	6212.85	9699.42	-10104.24	413.46	1653571.43	14350087.45	39°31'0.2996"N	80°57'12.0802"W	10112.70	177.657	0.31	-0.22	-0.22	
16957.00	88.980	158.090	6214.12	9793.35	-10192.11	446.83	1653604.78	14349999.62	39°30'59.4311"N	80°57'11.6551"W	10201.90	177.490	2.43	-0.53	-2.37	
17052.00	89.850	158.970	6215.09	9888.23	-10280.51	481.60	1653639.54	14349911.25	39°30'58.5572"N	80°57'11.2120"W	10291.78	177.318	1.30	0.92	0.93	

RECEIVED  
Office of Oil and Gas  
JAN 23 2023  
WV Department of  
Environmental Protection





# Actual Wellpath Report

Wable Unit 1H AWP Proj: 22020'  
Page 8 of 12



REFERENCE WELLPATH IDENTIFICATION			
Operator	ANTERO RESOURCES CORPORATION	Well	Wable Unit 1H
Field	Tyler	API	47-095-02780-0000
Facility	Nalley Pad	Wellbore	Wable Unit 1H AWB
Slot	Slot #02		

WELLPATH DATA (234 stations)																
MD [ft]	Inclination [°]	Azimuth [°]	TVD [ft]	Vert Sect [ft]	North [ft]	East [ft]	Grid East [US ft]	Grid North [US ft]	Latitude	Longitude	Closure Dist [ft]	Closure Dir [°]	DLS [°/100ft]	Build Rate [°/100ft]	Turn Rate [°/100ft]	Comments
17147.00	89.690	160.600	6215.47	9983.20	-10369.65	514.42	1653672.35	14349822.14	39°30'57.6760"N	80°57'10.7938"W	10382.40	177.160	1.72	-0.17	1.72	
17242.00	89.540	160.630	6216.11	10078.19	-10459.26	545.96	1653703.87	14349732.57	39°30'56.7902"N	80°57'10.3920"W	10473.50	177.012	0.16	-0.16	0.03	
17337.00	89.510	160.620	6216.89	10173.19	-10548.88	577.47	1653735.37	14349642.99	39°30'55.9043"N	80°57'9.9905"W	10564.68	176.867	0.03	-0.03	-0.01	
17431.00	89.720	160.720	6217.53	10267.18	-10637.58	608.59	1653766.47	14349554.32	39°30'55.0275"N	80°57'9.5941"W	10654.97	176.726	0.25	0.22	0.11	
17526.00	89.780	160.890	6217.94	10362.18	-10727.30	639.82	1653797.69	14349464.64	39°30'54.1406"N	80°57'9.1962"W	10746.36	176.587	0.19	0.06	0.18	
17620.00	89.380	161.000	6218.63	10456.17	-10816.14	670.51	1653828.37	14349375.83	39°30'53.2624"N	80°57'8.8052"W	10836.91	176.453	0.44	-0.43	0.12	
17715.00	89.540	160.420	6219.52	10551.16	-10905.81	701.89	1653859.74	14349286.21	39°30'52.3760"N	80°57'8.4054"W	10928.37	176.318	0.63	0.17	-0.61	
17810.00	89.230	160.660	6220.54	10646.15	-10995.37	733.54	1653891.37	14349196.67	39°30'51.4906"N	80°57'8.0022"W	11019.82	176.183	0.41	-0.33	0.25	
17904.00	89.260	160.500	6221.78	10740.14	-11084.02	764.79	1653922.61	14349108.06	39°30'50.6144"N	80°57'7.6041"W	11110.37	176.053	0.17	0.03	-0.17	
17999.00	89.630	160.800	6222.70	10835.13	-11173.65	796.26	1653954.07	14349018.47	39°30'49.7284"N	80°57'7.2031"W	11201.98	175.924	0.50	0.39	0.32	
18094.00	89.420	160.250	6223.49	10930.12	-11263.21	827.93	1653985.73	14348928.95	39°30'48.8430"N	80°57'6.7996"W	11293.60	175.796	0.62	-0.22	-0.58	
18189.00	89.260	160.330	6224.58	11025.10	-11352.64	859.97	1654017.76	14348839.55	39°30'47.9590"N	80°57'6.3914"W	11385.16	175.668	0.19	-0.17	0.08	
18283.00	89.350	160.190	6225.73	11119.08	-11441.11	891.72	1654049.49	14348751.12	39°30'47.0845"N	80°57'5.9870"W	11475.80	175.543	0.18	0.10	-0.15	
18378.00	89.450	160.690	6226.72	11214.06	-11530.62	923.52	1654081.28	14348661.64	39°30'46.1996"N	80°57'5.5818"W	11567.54	175.421	0.54	0.11	0.53	
18473.00	89.020	160.520	6227.99	11309.05	-11620.22	955.07	1654112.81	14348572.08	39°30'45.3139"N	80°57'5.1799"W	11659.40	175.301	0.49	-0.45	-0.18	
18567.00	89.230	160.190	6229.42	11403.03	-11708.74	986.66	1654144.40	14348483.60	39°30'44.4389"N	80°57'4.7774"W	11750.24	175.183	0.42	0.22	-0.35	
18662.00	89.110	160.570	6230.80	11498.01	-11798.21	1018.56	1654176.28	14348394.16	39°30'43.5544"N	80°57'4.3710"W	11842.10	175.066	0.42	-0.13	0.40	
18757.00	89.140	160.970	6232.25	11592.99	-11887.90	1049.85	1654207.55	14348304.50	39°30'42.6678"N	80°57'3.9725"W	11934.17	174.953	0.42	0.03	0.42	
18852.00	89.200	161.600	6233.63	11687.98	-11977.87	1080.32	1654238.02	14348214.57	39°30'41.7785"N	80°57'3.5842"W	12026.49	174.846	0.67	0.06	0.66	
18946.00	89.200	161.460	6234.94	11781.97	-12067.02	1110.10	1654267.79	14348125.46	39°30'40.8972"N	80°57'3.2049"W	12117.97	174.744	0.15	0.00	-0.15	
19041.00	88.980	161.840	6236.45	11876.96	-12157.18	1140.01	1654297.68	14348035.34	39°30'40.0060"N	80°57'2.8240"W	12210.51	174.643	0.46	-0.23	0.40	
19135.00	88.740	161.040	6238.32	11970.94	-12246.27	1169.92	1654327.58	14347946.28	39°30'39.1253"N	80°57'2.4430"W	12302.02	174.543	0.89	-0.26	-0.85	
19230.00	89.200	161.760	6240.03	12065.92	-12336.29	1200.22	1654357.86	14347856.30	39°30'38.2354"N	80°57'2.0571"W	12394.54	174.443	0.90	0.48	0.76	
19325.00	89.200	161.450	6241.35	12160.91	-12426.43	1230.19	1654387.83	14347766.19	39°30'37.3444"N	80°57'1.6752"W	12487.17	174.346	0.33	0.00	-0.33	
19419.00	88.740	160.970	6243.04	12254.89	-12515.40	1260.46	1654418.09	14347677.26	39°30'36.4649"N	80°57'1.2896"W	12578.72	174.249	0.71	-0.49	-0.51	
19514.00	89.080	161.170	6244.85	12349.87	-12605.25	1291.28	1654448.89	14347587.45	39°30'35.5767"N	80°57'0.8971"W	12671.22	174.151	0.42	0.36	0.21	
19608.00	88.890	161.270	6246.51	12443.86	-12694.23	1321.53	1654479.13	14347498.50	39°30'34.6971"N	80°57'0.5117"W	12762.83	174.057	0.23	-0.20	0.11	
19703.00	88.430	161.380	6248.74	12538.83	-12784.20	1351.94	1654509.53	14347408.56	39°30'33.8077"N	80°57'0.1244"W	12855.49	173.963	0.50	-0.48	0.12	
19798.00	88.800	162.940	6251.03	12633.79	-12874.61	1381.04	1654538.61	14347318.20	39°30'32.9141"N	80°56'59.7538"W	12948.47	173.877	1.69	0.39	1.64	
19892.00	89.420	162.280	6252.49	12727.75	-12964.30	1409.13	1654566.69	14347228.54	39°30'32.0275"N	80°56'59.3961"W	13040.66	173.797	0.96	0.66	-0.70	

RECEIVED  
Office of Oil and Gas  
JAN 23 2023  
WV Department of  
Environmental Protection



# Actual Wellpath Report

Wable Unit 1H AWP Proj: 22020'

Page 9 of 12



REFERENCE WELLPATH IDENTIFICATION			
Operator	ANTERO RESOURCES CORPORATION	Well	Wable Unit 1H
Field	Tyler	API	47-095-02780-0000
Facility	Nalley Pad	Wellbore	Wable Unit 1H AWB
Slot	Slot #02		

WELLPATH DATA (234 stations) † = interpolated, ‡ = extrapolated station																
MD [ft]	Inclination [°]	Azimuth [°]	TVD [ft]	Vert Sect [ft]	North [ft]	East [ft]	Grid East [US ft]	Grid North [US ft]	Latitude	Longitude	Closure Dist [ft]	Closure Dir [°]	DLS [°/100ft]	Build Rate [°/100ft]	Turn Rate [°/100ft]	Comments
19987.00	89.320	162.650	6253.54	12822.72	-13054.88	1437.75	1654595.30	14347138.00	39°30'31.1321"N	80°56'59.0315"W	13133.81	173.715	0.40	-0.11	0.39	
20081.00	89.350	162.520	6254.63	12916.69	-13144.56	1465.88	1654623.42	14347048.35	39°30'30.2455"N	80°56'58.6733"W	13226.05	173.637	0.14	0.03	-0.14	
20176.00	89.480	162.510	6255.60	13011.66	-13235.17	1494.42	1654651.95	14346957.78	39°30'29.3499"N	80°56'58.3098"W	13319.27	173.558	0.14	0.14	-0.01	
20270.00	89.350	162.250	6256.56	13105.64	-13324.75	1522.88	1654680.39	14346868.23	39°30'28.4643"N	80°56'57.9474"W	13411.50	173.480	0.31	-0.14	-0.28	
20365.00	89.540	162.280	6257.48	13200.61	-13415.24	1551.81	1654709.32	14346777.78	39°30'27.5699"N	80°56'57.5789"W	13504.69	173.402	0.20	0.20	0.03	
20460.00	89.600	161.310	6258.19	13295.61	-13505.48	1581.49	1654738.99	14346687.58	39°30'26.6779"N	80°56'57.2009"W	13597.76	173.321	1.02	0.06	-1.02	
20554.00	89.660	161.480	6258.80	13389.60	-13594.56	1611.48	1654768.96	14346598.53	39°30'25.7972"N	80°56'56.8189"W	13689.74	173.240	0.19	0.06	0.18	
20649.00	89.350	160.930	6259.62	13484.60	-13684.49	1642.09	1654799.56	14346508.64	39°30'24.9082"N	80°56'56.4291"W	13782.66	173.157	0.66	-0.33	-0.58	
20744.00	89.420	160.790	6260.64	13579.59	-13774.24	1673.23	1654830.69	14346418.93	39°30'24.0211"N	80°56'56.0324"W	13875.49	173.074	0.16	0.07	-0.15	
20838.00	89.420	161.250	6261.59	13673.59	-13863.12	1703.80	1654861.25	14346330.08	39°30'23.1425"N	80°56'55.6430"W	13967.43	172.993	0.49	0.00	0.49	
20933.00	89.820	161.810	6262.22	13768.58	-13953.23	1733.90	1654891.33	14346240.01	39°30'22.2518"N	80°56'55.2597"W	14060.54	172.916	0.72	0.42	0.59	
21027.00	89.630	160.590	6262.67	13862.58	-14042.21	1764.19	1654921.61	14346151.06	39°30'21.3721"N	80°56'54.8739"W	14152.60	172.839	1.31	-0.20	-1.30	
21122.00	89.510	160.330	6263.38	13957.57	-14131.73	1795.97	1654953.37	14346061.57	39°30'20.4871"N	80°56'54.4692"W	14245.40	172.757	0.30	-0.13	-0.27	
21216.00	89.720	160.610	6264.02	14051.56	-14220.32	1827.39	1654984.79	14345973.02	39°30'19.6114"N	80°56'54.0689"W	14337.26	172.677	0.37	0.22	0.30	
21311.00	89.540	160.210	6264.63	14146.55	-14309.82	1859.24	1655016.62	14345883.56	39°30'18.7267"N	80°56'53.6632"W	14430.10	172.597	0.46	-0.19	-0.42	
21406.00	89.630	160.700	6265.32	14241.54	-14399.35	1891.02	1655048.39	14345794.07	39°30'17.8417"N	80°56'53.2584"W	14522.99	172.518	0.52	0.09	0.52	
21500.00	89.660	160.450	6265.90	14335.53	-14487.99	1922.28	1655079.64	14345705.46	39°30'16.9654"N	80°56'52.8603"W	14614.96	172.442	0.27	0.03	-0.27	
21595.00	89.690	160.210	6266.44	14430.51	-14577.45	1954.26	1655111.60	14345616.04	39°30'16.0811"N	80°56'52.4530"W	14707.86	172.364	0.25	0.03	-0.25	
21690.00	89.820	160.420	6266.84	14525.50	-14666.90	1986.26	1655143.59	14345526.63	39°30'15.1969"N	80°56'52.0454"W	14800.78	172.288	0.26	0.14	0.22	
21784.00	89.660	159.950	6267.27	14619.49	-14755.33	2018.12	1655175.44	14345438.23	39°30'14.3227"N	80°56'51.6396"W	14892.70	172.212	0.53	-0.17	-0.50	
21879.00	89.510	160.450	6267.96	14714.47	-14844.71	2050.30	1655207.61	14345348.89	39°30'13.4391"N	80°56'51.2297"W	14985.63	172.136	0.55	-0.16	0.53	
21973.00	89.780	160.690	6268.54	14808.46	-14933.35	2081.57	1655238.87	14345260.28	39°30'12.5628"N	80°56'50.8314"W	15077.73	172.065	0.38	0.29	0.26	
21995.00	89.750	160.450	6268.63	14830.46	-14954.10	2088.89	1655246.18	14345239.54	39°30'12.3577"N	80°56'50.7382"W	15099.29	172.048	1.10	-0.14	-1.09	
22020.00†	89.750	160.450	6268.74	14855.46	-14977.66	2097.26	1655254.54	14345215.99	39°30'12.1248"N	80°56'50.6317"W	15123.78	172.029	0.00	0.00	0.00	Projected MD at TD: 22020'

RECEIVED  
 Office of Oil and Gas  
 JAN 23 2023  
 WV Department of  
 Environmental Protection



# Actual Wellpath Report

Wable Unit 1H AWP Proj: 22020'

Page 10 of 12



## REFERENCE WELLPATH IDENTIFICATION

Operator	ANTERO RESOURCES CORPORATION	Well	Wable Unit 1H
Field	Tyler	API	47-095-02780-0000
Facility	Nalley Pad	Wellbore	Wable Unit 1H AWB
Slot	Slot #02		

## HOLE & CASING SECTIONS - Ref Wellbore: Wable Unit 1H AWB Ref Wellpath: Wable Unit 1H AWP Proj: 22020'

String/Diameter	Start MD [ft]	End MD [ft]	Interval [ft]	Start TVD [ft]	End TVD [ft]	Start N/S [ft]	Start E/W [ft]	End N/S [ft]	End E/W [ft]
20in Conductor	30.00	130.00	100.00	30.00	130.00	0.00	0.00	0.23	-0.10
17.5in Open Hole	130.00	382.00	252.00	130.00	381.99	0.23	-0.10	1.70	-0.66
13.375in Casing Surface	30.00	362.00	332.00	30.00	361.99	0.00	0.00	1.54	-0.49
12.25in Open Hole	382.00	2790.00	2408.00	381.99	2544.35	1.70	-0.66	-92.01	-925.15
9.625in Casing Intermediate	30.00	2770.00	2740.00	30.00	2527.05	0.00	0.00	-89.84	-915.35
8.75in Open Hole	2790.00	6043.00	3253.00	2544.35	5337.48	-92.01	-925.15	-315.66	-2568.94
8.5in Open Hole	6043.00	22020.00	15977.00	5337.48	6268.74	-315.66	-2568.94	-14977.66	2097.26
5.5in Casing Production	30.00	22000.00	21970.00	30.00	6268.65	0.00	0.00	-14958.81	2090.56

RECEIVED  
 Office of Oil and Gas  
 JAN 23 2023  
 WV Department of  
 Environmental Protection



# Actual Wellpath Report

Wable Unit 1H AWP Proj: 22020'

Page 11 of 12



REFERENCE WELLPATH IDENTIFICATION			
Operator	ANTERO RESOURCES CORPORATION	Well	Wable Unit 1H
Field	Tyler	API	47-095-02780-0000
Facility	Nalley Pad	Wellbore	Wable Unit 1H AWB
Slot	Slot #02		

TARGETS								
Name	TVD [ft]	North [ft]	East [ft]	Grid East [US ft]	Grid North [US ft]	Latitude	Longitude	Shape
Wable Unit 1H POE Rev-2	6079.00	-826.33	-2740.10	1650419.13	14359361.63	39°32'32.0103"N	80°57'52.2725"W	point
Wable Unit 1H LP Rev-2	6126.00	-1056.37	-2661.90	1650497.30	14359131.69	39°32'29.7365"N	80°57'51.2754"W	point
Wable Unit 1H BHL Rev-3	6382.93	-14992.59	2075.85	1655233.14	14345201.06	39°30'11.9774"N	80°56'50.9049"W	point
Wable Unit 1H BHL Rev-2	6384.42	-15073.18	2103.25	1655260.53	14345120.51	39°30'11.1808"N	80°56'50.5560"W	point
Wable Unit 1H 50' L/R Hard Line	6500.00	-7949.76	-318.43	1652839.83	14352241.07	39°31'21.5968"N	80°57'21.4056"W	rectangle
2D Rectangle 15047.6 x 100.								

WELLPATH COMPOSITION - Ref Wellbore: Wable Unit 1H AWB Ref Wellpath: Wable Unit 1H AWP Proj: 22020'					
Start MD [ft]	End MD [ft]	Positional Uncertainty Model	Log Name/Comment	Wellbore	Survey Date
30.00	266.00	Gyrodata 2015 - GC+WIR+DPIPE	01 Gyrodata MS Gyro <17-1/2"> (100'-266')	Wable Unit 1H AWB	4/18/2022
266.00	2701.00	BH NaviTrak (2019) (Axial Corr+HRGM)	02 APS EM <12-1/4"> (266')(509'-2701')	Wable Unit 1H AWB	4/18/2022
2701.00	5966.00	BH NaviTrak (2019) (Axial Corr+HRGM)	03 APS EM <8-3/4"> (2701')(2844'-5966')	Wable Unit 1H AWB	5/27/2022
5966.00	22020.00	BH AutoTrak Curve/eXpress (2019) (HRGM, Short spacing)	04 BH AT Curve <8-1/2"> (5966')(6025'-21995')	Wable Unit 1H AWB	5/27/2022

RECEIVED  
 Office of Oil and Gas  
 JAN 23 2023  
 WV Department of  
 Environmental Protection



# Actual Wellpath Report

Wable Unit 1H AWP Proj: 22020'

Page 12 of 12



## REFERENCE WELLPATH IDENTIFICATION

Operator	ANTERO RESOURCES CORPORATION	Well	Wable Unit 1H
Field	Tyler	API	47-095-02780-0000
Facility	Nalley Pad	Wellbore	Wable Unit 1H AWB
Slot	Slot #02		

## COMMENTS

### Wellpath general comments

API: 47-095-02780-0000

BH Job #: 111286090

Rig: H&P 519

Duration: 6/1/2022-6/7/2022

Gyrodata MS Gyro <17-1/2"> (100'-266')

APS EM <12-1/4"> (266')(509'-2701')

APS EM <8-3/4"> (2701')(2844'-5966')

BH AT Curve <8-1/2"> (5966')(6025'-21995')

Sycamore: 6700' MD

Middlesex: 6836' MD

Burkett: 6981' MD

Marcellus POE: 7045' MD

Projected MD at TD: 22020'

RECEIVED  
Office of Oil and Gas  
JAN 23 2023  
WV Department of  
Environmental Protection