



# ANTERO RESOURCES CORPORATION



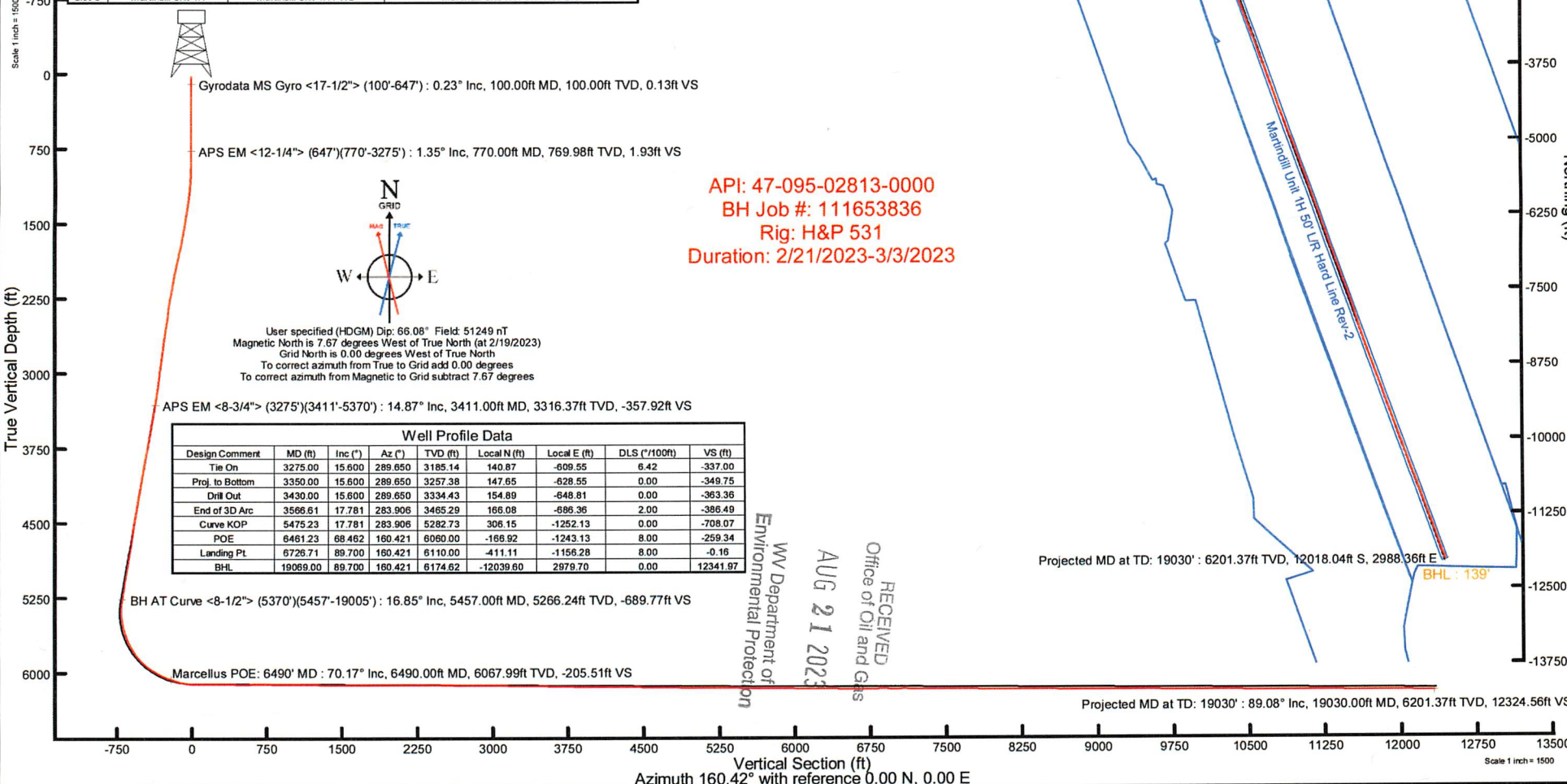
Location: Tyler County, WV  
 Field: Tyler  
 Facility: Wrigley Pad

Slot: Slot C  
 Well: Martindill Unit 1H  
 Wellbore: Martindill Unit 1H PWB

Fix reference wellpath is Martindill Unit 1H PWP Rev-B.0	Grid System: NAD83 / UTM Zone 17 North, US feet
True vertical depths are referenced to H&P 531 (RKB)	North Reference: Grid north
Reference wellpath measured depths are referenced to H&P 531 (RKB)	Scale: True distance
H&P 531 (RKB) to Mean Sea Level: 907 feet	Coordinates are in feet referenced to Slot
Mean Sea Level to Ground level (At Slot: Slot C): -497 feet	Depths are in feet
Offset wellpath MDs are referenced to each path's default MD datum	Created by: rlsjerry on 2023-03-14, Database: WA_MPL_EASTERNUS_Dat

Location Information				
Facility Name	Grid East (US ft)	Grid North (US ft)	Latitude	Longitude
Wrigley Pad	1638329.430	14315291.560	39°25'16.2920"N	81°00'26.6070"W
Slot	Local N (ft)	Local E (ft)	Grid East (US ft)	Grid North (US ft)
Slot C	-9.51	28.41	1638357.830	14315282.050
			Latitude	Longitude
			39°25'16.1990"N	81°00'26.2450"W
Comment				
Martindill Unit 1H				
H&P 531 (RKB) to Ground level (At Slot: Slot C)				
30ft				
Mean Sea Level to Ground level (At Slot: Slot C)				
-937ft				
H&P 531 (RKB) to Mean Sea Level				
967ft				

Well Data			
Slot	Well	Wellbore	Wellpath
Slot C	Martindill Unit 1H	Martindill Unit 1H AWB	Martindill Unit 1H AWP Proj: 19030'
Slot C	Martindill Unit 1H	Martindill Unit 1H PWB	Martindill Unit 1H PWP Rev-B.0



API: 47-095-02813-0000  
 BH Job #: 111653836  
 Rig: H&P 531  
 Duration: 2/21/2023-3/3/2023

Well Profile Data							
Design Comment	MD (ft)	Inc (°)	Az (°)	TVD (ft)	Local N (ft)	Local E (ft)	VS (ft)
Tie On	3275.00	15.600	289.650	3185.14	140.87	-609.55	-337.00
Proj. to Bottom	3350.00	15.600	289.650	3257.38	147.65	-628.55	-349.75
Drill Out	3430.00	15.600	289.650	3334.43	154.89	-648.81	-363.36
End of 3D Arc	3566.61	17.781	283.906	3465.29	166.08	-686.36	-386.49
Curve KOP	5475.23	17.781	283.906	5282.73	306.15	-1252.13	-708.07
POE	6461.23	68.462	160.421	6060.00	-166.92	-1243.13	-259.34
Landing Pt.	6726.71	89.700	160.421	6110.00	-411.11	-1156.28	-0.16
BHL	19069.00	89.700	160.421	6174.62	-12039.60	2979.70	12341.97

RECEIVED  
 Office of Oil and Gas  
 AUG 21 2023  
 WV Department of  
 Environmental Protection

Projected MD at TD: 19030' : 6201.37ft TVD, 12018.04ft S, 2988.36ft E

Projected MD at TD: 19030' : 89.08° Inc, 19030.00ft MD, 6201.37ft TVD, 12324.56ft VS

Vertical Section (ft)  
 Azimuth 160.42° with reference 0.00 N, 0.00 E



# Actual Wellpath Report

Martindill Unit 1H AWP Proj: 19030'  
Page 1 of 11



REFERENCE WELLPATH IDENTIFICATION			
Operator	ANTERO RESOURCES CORPORATION	Well	Martindill Unit 1H
Field	Tyler	API	47-095-02813-0000
Facility	Wrigley Pad	Wellbore	Martindill Unit 1H AWB
Slot	Slot C		

REPORT SETUP INFORMATION			
Projection System	NAD27 / UTM Zone 17 North, US feet	Software System	WellArchitect® 6.0
North Reference	Grid	User	Edsaryar
Scale	0.999600	Report Generated	3/14/2023 at 12:04:43 AM
Convergence at slot	0.00°	Database	WA_MPL_EASTERNUS_Defn

WELLPATH LOCATION						
	Local coordinates		Grid coordinates		Geographic coordinates	
	North[ft]	East[ft]	Easting[US ft]	Northing[US ft]	Latitude	Longitude
Slot Location	-9.51	28.41	1638357.83	14315282.05	39°25'16.1980"N	81°00'26.2450"W
Facility Reference Pt			1638329.43	14315291.56	39°25'16.2920"N	81°00'26.6070"W
Field Reference Pt			0.00	0.00	0°00'0.0000"	85°29'19.3013"W

WELLPATH DATUM			
Calculation method	Minimum curvature	H&P 531 (RKB) to Facility Vertical Datum	967.00ft
Horizontal Reference Pt	Slot	H&P 531 (RKB) to Mean Sea Level	967.00ft
Vertical Reference Pt	H&P 531 (RKB)	H&P 531 (RKB) to Ground Level at Slot (Slot C)	30.00ft
MD Reference Pt	H&P 531 (RKB)	Section Origin	N 0.00, E 0.00 ft
Field Vertical Reference	Mean Sea Level	Section Azimuth	160.42°

RECEIVED  
 Office of Oil and Gas  
**AUG 21 2023**  
 WV Department of  
 Environmental Protection



# Actual Wellpath Report

Martindill Unit 1H AWP Proj: 19030'  
Page 2 of 11



REFERENCE WELLPATH IDENTIFICATION			
Operator	ANTERO RESOURCES CORPORATION	Well	Martindill Unit 1H
Field	Tyler	API	47-095-02813-0000
Facility	Wrigley Pad	Wellbore	Martindill Unit 1H AWB
Slot	Slot C		

WELLPATH DATA (205 stations) † = interpolated, ‡ = extrapolated station																
MD (ft)	Inclination (°)	Azimuth (°)	TVD (ft)	Vert Sect (ft)	North (ft)	East (ft)	Grid East (US ft)	Grid North (US ft)	Latitude	Longitude	Closure Dist (ft)	Closure Dir (°)	DLS (°/100ft)	Build Rate (°/100ft)	Turn Rate (°/100ft)	Comments
0.00	0.00	184.470	0.00	0.00	0.00	0.00	1638357.83	14315282.05	39°25'16.1980"N	81°00'26.2450"W	0.00	0.000	0.00	0.00	0.00	
30.00	0.000	184.470	30.00	0.00	0.00	0.00	1638357.83	14315282.05	39°25'16.1980"N	81°00'26.2450"W	0.00	0.000	0.00	0.00	0.00	
100.00	0.230	184.470	100.00	0.13	-0.14	-0.01	1638357.82	14315281.91	39°25'16.1966"N	81°00'26.2451"W	0.14	184.470	0.33	0.33	0.00	Gyrodatta MS Gyro <17-1/2"> (100'-647')
200.00	0.260	129.770	200.00	0.51	-0.49	0.15	1638357.98	14315281.56	39°25'16.1932"N	81°00'26.2431"W	0.51	163.062	0.23	0.03	-54.70	
300.00	0.250	122.170	300.00	0.87	-0.75	0.51	1638358.34	14315281.30	39°25'16.1906"N	81°00'26.2385"W	0.90	145.828	0.04	-0.01	-7.60	
400.00	0.260	150.660	400.00	1.27	-1.06	0.80	1638358.63	14315280.99	39°25'16.1875"N	81°00'26.2348"W	1.33	142.879	0.13	0.01	28.49	
500.00	0.330	140.090	500.00	1.76	-1.48	1.10	1638358.93	14315280.57	39°25'16.1834"N	81°00'26.2310"W	1.84	143.399	0.09	0.07	-10.57	
600.00	0.330	127.560	599.99	2.27	-1.88	1.51	1638359.34	14315280.18	39°25'16.1795"N	81°00'26.2257"W	2.41	141.133	0.07	0.00	-12.53	
647.00	0.330	140.700	646.99	2.51	-2.06	1.70	1638359.53	14315279.99	39°25'16.1776"N	81°00'26.2233"W	2.68	140.431	0.16	0.00	27.96	
770.00	1.350	289.900	769.98	1.93	-1.84	0.57	1638358.40	14315280.21	39°25'16.1798"N	81°00'26.2378"W	1.93	162.919	1.34	0.83	121.30	APS EM <12-1/4"> (647')(770'-3275')
859.00	2.520	275.870	858.93	0.42	-1.29	-2.37	1638355.47	14315280.76	39°25'16.1853"N	81°00'26.2751"W	2.69	241.455	1.41	1.31	-15.76	
949.00	4.840	282.880	948.74	-2.47	-0.24	-8.04	1638349.80	14315281.81	39°25'16.1957"N	81°00'26.3474"W	8.04	268.303	2.62	2.58	7.79	
1039.00	6.380	282.130	1038.31	-7.14	1.66	-16.63	1638341.21	14315283.71	39°25'16.2144"N	81°00'26.4569"W	16.71	275.699	1.71	1.71	-0.83	
1134.00	7.990	286.560	1132.56	-13.80	4.65	-28.12	1638329.72	14315286.70	39°25'16.2440"N	81°00'26.6033"W	28.50	279.392	1.79	1.69	4.66	
1228.00	9.960	288.580	1225.40	-22.68	9.10	-42.09	1638315.76	14315291.15	39°25'16.2880"N	81°00'26.7813"W	43.06	282.205	2.12	2.10	2.15	
1323.00	12.010	289.950	1318.66	-34.05	15.09	-59.17	1638298.69	14315297.14	39°25'16.3471"N	81°00'26.9989"W	61.06	284.312	2.18	2.16	1.44	
1417.00	13.400	290.580	1410.35	-47.30	22.26	-78.56	1638279.31	14315304.30	39°25'16.4180"N	81°00'27.2460"W	81.65	285.821	1.49	1.48	0.67	
1512.00	14.080	287.250	1502.64	-61.33	29.56	-99.90	1638257.97	14315311.59	39°25'16.4901"N	81°00'27.5180"W	104.18	286.482	1.10	0.72	-3.51	
1606.00	15.410	288.390	1593.54	-75.86	36.89	-122.67	1638235.21	14315318.92	39°25'16.5625"N	81°00'27.8082"W	128.10	286.736	1.45	1.41	1.21	
1701.00	16.180	288.620	1684.95	-91.82	45.10	-147.19	1638210.70	14315327.13	39°25'16.6436"N	81°00'28.1206"W	153.94	287.034	0.81	0.81	0.24	
1795.00	18.080	294.200	1774.78	-110.01	55.26	-172.91	1638184.99	14315337.29	39°25'16.7440"N	81°00'28.4484"W	181.53	287.723	2.67	2.02	5.94	
1890.00	19.290	289.700	1864.78	-130.15	66.59	-201.13	1638156.78	14315348.61	39°25'16.8560"N	81°00'28.8080"W	211.87	288.319	1.98	1.27	-4.74	
1985.00	19.250	289.940	1954.46	-150.05	77.22	-230.63	1638127.30	14315359.24	39°25'16.9610"N	81°00'29.1838"W	243.21	288.512	0.09	-0.04	0.25	
2081.00	19.440	279.070	2045.07	-167.78	85.14	-261.29	1638096.65	14315367.16	39°25'17.0393"N	81°00'29.5745"W	274.81	288.048	3.75	0.20	-11.32	
2174.00	19.100	281.410	2132.86	-183.04	90.59	-291.49	1638066.46	14315372.60	39°25'17.0931"N	81°00'29.9594"W	305.24	287.264	0.91	-0.37	2.52	
2269.00	19.160	285.980	2222.62	-200.11	97.96	-321.71	1638036.25	14315379.97	39°25'17.1659"N	81°00'30.3445"W	336.30	286.935	1.58	0.06	4.81	
2364.00	18.240	279.020	2312.61	-216.29	104.58	-351.39	1638006.58	14315386.59	39°25'17.2313"N	81°00'30.7226"W	366.62	286.574	2.54	-0.97	-7.33	
2458.00	18.560	266.860	2401.84	-227.57	106.07	-380.87	1637977.12	14315388.08	39°25'17.2460"N	81°00'31.0983"W	395.36	285.562	4.09	0.34	-12.94	
2553.00	17.500	284.440	2492.24	-239.85	108.80	-409.82	1637948.18	14315390.81	39°25'17.2730"N	81°00'31.4672"W	424.01	284.869	5.81	-1.12	18.51	
2648.00	17.310	280.770	2582.89	-254.98	115.01	-437.53	1637920.47	14315397.01	39°25'17.3343"N	81°00'31.8204"W	452.40	284.727	1.17	-0.20	-3.86	

RECEIVED  
Office of Oil and Gas  
AUG 21 2023  
WV Department of  
Environmental Protection



# Actual Wellpath Report

Martindill Unit 1H AWP Proj: 19030'  
Page 3 of 11



REFERENCE WELLPATH IDENTIFICATION			
Operator	ANTERO RESOURCES CORPORATION	Well	Martindill Unit 1H
Field	Tyler	API	47-095-02813-0000
Facility	Wrigley Pad	Wellbore	Martindill Unit 1H AWB
Slot	Slot C		

WELLPATH DATA (205 stations)																
MD [ft]	Inclination [°]	Azimuth [°]	TVD [ft]	Vert Sect [ft]	North [ft]	East [ft]	Grid East [US ft]	Grid North [US ft]	Latitude	Longitude	Closure Dist [ft]	Closure Dir [°]	DLS [°/100ft]	Build Rate [°/100ft]	Turn Rate [°/100ft]	Comments
2742.00	16.200	283.170	2672.90	-269.14	120.61	-464.04	1637893.98	14315402.61	39°25'17.3896"N	81°00'32.1581"W	479.46	284.569	1.39	-1.18	2.55	
2837.00	16.130	272.220	2764.17	-281.22	124.14	-490.14	1637867.89	14315406.14	39°25'17.4245"N	81°00'32.4907"W	505.61	284.213	3.21	-0.07	-11.53	
2932.00	15.320	282.850	2855.63	-292.85	127.44	-515.57	1637842.47	14315409.44	39°25'17.4571"N	81°00'32.8147"W	531.08	283.885	3.15	-0.85	11.19	
3026.00	15.830	280.800	2946.18	-305.99	132.61	-540.27	1637817.78	14315414.60	39°25'17.5081"N	81°00'33.1294"W	556.30	283.790	0.80	0.54	-2.18	
3121.00	16.960	271.920	3037.33	-317.63	135.50	-566.85	1637791.21	14315417.49	39°25'17.5367"N	81°00'33.4682"W	582.82	283.444	2.89	1.19	-9.35	
3216.00	16.210	275.970	3128.38	-328.43	137.34	-593.88	1637764.18	14315419.34	39°25'17.5549"N	81°00'33.8127"W	609.56	283.021	1.45	-0.79	4.26	
3275.00	15.600	289.650	3185.14	-337.00	140.87	-609.55	1637748.52	14315422.86	39°25'17.5897"N	81°00'34.0123"W	625.62	283.013	6.42	-1.03	23.19	
3411.00	14.870	282.830	3316.37	-357.92	150.89	-643.79	1637714.30	14315432.88	39°25'17.6888"N	81°00'34.4486"W	661.24	283.191	1.42	-0.54	-5.01	APS EM <8-3/4"> (3275')(3411'-5370')
3505.00	17.020	284.670	3406.75	-372.13	157.06	-668.86	1637689.24	14315439.04	39°25'17.7497"N	81°00'34.7681"W	687.06	283.214	2.35	2.29	1.96	
3600.00	18.080	284.180	3497.33	-388.14	164.19	-696.61	1637661.50	14315446.17	39°25'17.8201"N	81°00'35.1217"W	715.70	283.262	1.13	1.12	-0.52	
3695.00	17.370	282.410	3587.82	-403.85	170.85	-724.75	1637633.37	14315452.83	39°25'17.8859"N	81°00'35.4803"W	744.61	283.264	0.94	-0.75	-1.86	
3790.00	18.850	283.850	3678.11	-419.82	177.57	-753.50	1637604.63	14315459.55	39°25'17.9523"N	81°00'35.8466"W	774.14	283.260	1.63	1.56	1.52	
3885.00	20.770	285.090	3767.48	-437.86	185.63	-784.67	1637573.48	14315467.60	39°25'18.0319"N	81°00'36.2438"W	806.33	283.310	2.07	2.02	1.31	
3979.00	20.090	282.670	3855.57	-455.95	193.51	-816.51	1637541.65	14315475.48	39°25'18.1098"N	81°00'36.6496"W	839.13	283.333	1.15	-0.72	-2.57	
4074.00	19.240	280.370	3945.03	-472.47	199.91	-847.83	1637510.34	14315481.88	39°25'18.1730"N	81°00'37.0486"W	871.08	283.267	1.21	-0.89	-2.42	
4169.00	18.410	277.450	4034.95	-487.11	204.67	-878.10	1637480.08	14315486.64	39°25'18.2200"N	81°00'37.4344"W	901.64	283.120	1.32	-0.87	-3.07	
4264.00	17.430	282.790	4125.35	-501.54	209.76	-906.85	1637451.34	14315491.73	39°25'18.2703"N	81°00'37.8008"W	930.80	283.024	2.01	-1.03	5.62	
4358.00	17.110	288.500	4215.12	-517.61	217.27	-933.70	1637424.51	14315499.23	39°25'18.3445"N	81°00'38.1429"W	958.64	283.099	1.83	-0.34	6.07	
4454.00	15.720	285.530	4307.20	-533.80	225.23	-959.62	1637398.59	14315507.19	39°25'18.4232"N	81°00'38.4732"W	985.70	283.209	1.69	-1.45	-3.09	
4548.00	16.630	285.400	4397.48	-548.84	232.21	-984.86	1637373.37	14315514.17	39°25'18.4921"N	81°00'38.7948"W	1011.87	283.267	0.97	0.97	-0.14	
4643.00	17.190	284.370	4488.37	-564.47	239.31	-1011.57	1637346.67	14315521.26	39°25'18.5622"N	81°00'39.1351"W	1039.49	283.310	0.67	0.59	-1.08	
4738.00	15.680	280.780	4579.49	-578.80	245.19	-1037.78	1637320.47	14315527.15	39°25'18.6203"N	81°00'39.4691"W	1066.35	283.293	1.91	-1.59	-3.78	
4833.00	16.680	281.070	4670.73	-592.24	250.21	-1063.77	1637294.49	14315532.16	39°25'18.6699"N	81°00'39.8003"W	1092.80	283.236	1.06	1.05	0.31	
4927.00	18.560	283.320	4760.31	-607.24	256.25	-1091.57	1637266.70	14315538.20	39°25'18.7296"N	81°00'40.1546"W	1121.24	283.211	2.13	2.00	2.39	
5022.00	17.000	280.110	4850.78	-622.33	262.17	-1119.96	1637238.32	14315544.12	39°25'18.7881"N	81°00'40.5163"W	1150.23	283.175	1.94	-1.64	-3.38	
5117.00	17.840	281.100	4941.42	-636.64	267.41	-1147.91	1637210.38	14315549.35	39°25'18.8398"N	81°00'40.8725"W	1178.64	283.113	0.94	0.88	1.04	
5212.00	18.540	284.000	5031.67	-652.42	273.87	-1176.84	1637181.46	14315555.81	39°25'18.9036"N	81°00'41.2412"W	1208.29	283.100	1.20	0.74	3.05	
5306.00	16.510	280.320	5121.31	-667.34	279.88	-1204.49	1637153.83	14315561.81	39°25'18.9629"N	81°00'41.5935"W	1236.58	283.081	2.46	-2.16	-3.91	
5370.00	15.930	279.050	5182.76	-676.09	282.89	-1222.11	1637136.21	14315564.82	39°25'18.9927"N	81°00'41.8180"W	1254.42	283.033	1.06	-0.91	-1.98	
5457.00	16.850	289.560	5266.24	-689.77	288.99	-1245.79	1637112.54	14315570.92	39°25'19.0529"N	81°00'42.1198"W	1278.87	283.060	3.56	1.06	12.08	BH AT Curve <8-1/2"> (5370')(5457'-19005')

RECEIVED  
Office of Oil and Gas  
AUG 21 2023  
WV Department of  
Environmental Protection



# Actual Wellpath Report

Martindill Unit 1H AWP Proj: 19030'  
Page 4 of 11



REFERENCE WELLPATH IDENTIFICATION			
Operator	ANTERO RESOURCES CORPORATION	Well	Martindill Unit 1H
Field	Tyler	API	47-095-02813-0000
Facility	Wrigley Pad	Wellbore	Martindill Unit 1H AWB
Slot	Slot C		

WELLPATH DATA (205 stations) † = interpolated, ‡ = extrapolated station																
MD [ft]	Inclination [°]	Azimuth [°]	TVD [ft]	Vert Sect [ft]	North [ft]	East [ft]	Grid East [US ft]	Grid North [US ft]	Latitude	Longitude	Closure Dist [ft]	Closure Dir [°]	DLS [°/100ft]	Build Rate [°/100ft]	Turn Rate [°/100ft]	Comments
5526.00	13.390	270.130	5332.89	-698.78	292.36	-1263.22	1637095.12	14315574.29	39°25'19.0862"N	81°00'42.3418"W	1296.61	283.031	8.83	-5.01	-28.16	
5621.00	14.010	229.960	5425.39	-698.47	284.97	-1283.06	1637075.28	14315566.90	39°25'19.0132"N	81°00'42.5947"W	1314.33	282.522	9.84	0.65	-42.28	
5716.00	15.800	203.640	5517.29	-685.01	265.70	-1297.07	1637061.28	14315547.64	39°25'18.8227"N	81°00'42.7732"W	1324.00	281.577	7.30	1.88	-27.71	
5811.00	19.730	191.190	5607.78	-661.79	238.10	-1305.38	1637052.98	14315520.05	39°25'18.5499"N	81°00'42.8790"W	1326.91	280.337	5.73	4.14	-13.11	
5905.00	25.010	181.020	5694.70	-629.52	202.63	-1308.81	1637049.54	14315484.60	39°25'18.1993"N	81°00'42.9227"W	1324.40	278.801	6.95	5.62	-10.82	
6000.00	32.860	171.640	5777.82	-585.35	156.96	-1305.41	1637052.94	14315438.94	39°25'17.7479"N	81°00'42.8793"W	1314.82	276.856	9.52	8.26	-9.87	
6095.00	40.010	167.830	5854.21	-529.71	101.53	-1295.22	1637063.14	14315383.53	39°25'17.2001"N	81°00'42.7493"W	1299.19	274.482	7.89	7.53	-4.01	
6121.00†	42.331	167.833	5873.78	-512.74	84.80	-1291.61	1637066.74	14315366.81	39°25'17.0347"N	81°00'42.7033"W	1294.39	273.756	8.93	8.93	0.01	Sycamore: 6121' MD
6190.00	48.490	167.840	5922.20	-464.03	36.78	-1281.26	1637077.09	14315318.82	39°25'16.5602"N	81°00'42.5713"W	1281.79	271.644	8.93	8.93	0.01	
6264.00†	55.282	167.417	5967.85	-406.31	-20.05	-1268.78	1637089.56	14315262.01	39°25'15.9985"N	81°00'42.4123"W	1268.94	269.095	9.19	9.18	-0.57	Middlesex: 6264' MD
6285.00	57.210	167.310	5979.52	-388.97	-37.09	-1264.96	1637093.38	14315244.98	39°25'15.8301"N	81°00'42.3636"W	1265.51	268.321	9.19	9.18	-0.51	
6380.00	64.180	166.560	6025.99	-306.72	-117.73	-1246.23	1637112.10	14315164.37	39°25'15.0331"N	81°00'42.1247"W	1251.78	264.603	7.37	7.34	-0.79	
6430.00	67.610	165.420	6046.40	-261.30	-162.00	-1235.18	1637123.15	14315120.11	39°25'14.5956"N	81°00'41.9838"W	1245.76	262.528	7.17	6.86	-2.28	
6432.00†	67.697	165.395	6047.16	-259.46	-163.79	-1234.71	1637123.62	14315118.32	39°25'14.5779"N	81°00'41.9779"W	1245.53	262.443	4.51	4.36	-1.24	Burkett: 6432' MD
6474.00	69.530	164.880	6062.48	-220.48	-201.59	-1224.68	1637133.64	14315080.54	39°25'14.2043"N	81°00'41.8500"W	1241.16	260.652	4.51	4.36	-1.23	
6490.00†	70.170	164.986	6067.99	-205.51	-216.10	-1220.77	1637137.55	14315066.04	39°25'14.0610"N	81°00'41.8002"W	1239.75	259.962	4.05	4.00	0.67	Marcellus POE: 6490' MD
6569.00	73.330	165.500	6092.73	-130.76	-288.64	-1201.67	1637156.64	14314993.53	39°25'13.3440"N	81°00'41.5566"W	1235.85	256.494	4.05	4.00	0.65	
6664.00	83.520	166.410	6111.77	-38.25	-378.81	-1179.13	1637179.18	14314903.39	39°25'12.4529"N	81°00'41.2693"W	1238.48	252.190	10.77	10.73	0.96	
6759.00	90.650	164.430	6116.59	56.20	-470.57	-1155.25	1637203.04	14314811.67	39°25'11.5460"N	81°00'40.9649"W	1247.42	247.838	7.79	7.51	-2.08	
6855.00	89.630	161.350	6116.36	152.10	-562.30	-1127.01	1637231.27	14314719.97	39°25'10.6393"N	81°00'40.6049"W	1259.50	243.484	3.38	-1.06	-3.21	
6950.00	89.660	161.510	6116.95	247.08	-652.36	-1096.76	1637261.51	14314629.96	39°25'9.7493"N	81°00'40.2193"W	1276.11	239.256	0.17	0.03	0.17	
7044.00	89.910	161.370	6117.30	341.07	-741.47	-1066.84	1637291.42	14314540.88	39°25'8.8687"N	81°00'39.8379"W	1299.20	235.200	0.30	0.27	-0.15	
7139.00	89.230	159.290	6118.01	436.06	-830.91	-1034.87	1637323.38	14314451.47	39°25'7.9846"N	81°00'39.4304"W	1327.17	231.238	2.30	-0.72	-2.19	
7234.00	89.940	160.300	6118.70	531.05	-920.06	-1002.06	1637356.18	14314362.36	39°25'7.1036"N	81°00'39.0122"W	1360.38	227.443	1.30	0.75	1.06	
7328.00	91.380	155.470	6117.62	624.92	-1007.12	-966.68	1637391.53	14314275.34	39°25'6.2432"N	81°00'38.5613"W	1395.98	223.827	5.36	1.53	-5.14	
7423.00	89.290	158.240	6117.06	719.72	-1094.45	-929.35	1637428.85	14314188.04	39°25'5.3801"N	81°00'38.0855"W	1435.80	220.336	3.65	-2.20	2.92	
7518.00	89.170	161.380	6118.34	814.70	-1183.60	-896.57	1637461.62	14314098.93	39°25'4.4991"N	81°00'37.6677"W	1484.84	217.144	3.31	-0.13	3.31	
7612.00	89.350	161.150	6119.55	908.68	-1272.61	-866.38	1637491.80	14314009.95	39°25'3.6193"N	81°00'37.2829"W	1539.53	214.247	0.31	0.19	-0.24	
7707.00	89.230	160.870	6120.73	1003.66	-1362.43	-835.47	1637522.70	14313920.17	39°25'2.7316"N	81°00'36.8889"W	1598.20	211.517	0.32	-0.13	-0.29	
7801.00	89.350	160.600	6121.90	1097.66	-1451.16	-804.46	1637553.70	14313831.47	39°25'1.8547"N	81°00'36.4936"W	1659.22	209.002	0.31	0.13	-0.29	

RECEIVED  
 Office of Oil and Gas  
 AUG 21 2023  
 WV Department of  
 Environmental Protection



# Actual Wellpath Report

Martindill Unit 1H AWP Proj: 19030'  
Page 5 of 11



REFERENCE WELLPATH IDENTIFICATION			
Operator	ANTERO RESOURCES CORPORATION	Well	Martindill Unit 1H
Field	Tyler	API	47-095-02813-0000
Facility	Wrigley Pad	Wellbore	Martindill Unit 1H AWB
Slot	Slot C		

WELLPATH DATA (205 stations)																
MD [ft]	Inclination [°]	Azimuth [°]	TVD [ft]	Vert Sect [ft]	North [ft]	East [ft]	Grid East [US ft]	Grid North [US ft]	Latitude	Longitude	Closure Dist [ft]	Closure Dir [°]	DLS ["/100ft]	Build Rate ["/100ft]	Turn Rate ["/100ft]	Comments
7896.00	89.820	161.080	6122.58	1192.65	-1540.90	-773.28	1637584.86	14313741.77	39°25'0.9678"N	81°00'36.0962"W	1724.04	206.649	0.71	0.49	0.51	
7991.00	89.510	161.280	6123.14	1287.64	-1630.82	-742.63	1637615.50	14313651.89	39°25'0.0791"N	81°00'35.7056"W	1791.94	204.483	0.39	-0.33	0.21	
8085.00	90.060	162.040	6123.49	1381.62	-1720.04	-713.06	1637645.06	14313562.70	39°24'59.1973"N	81°00'35.3286"W	1861.98	202.517	1.00	0.59	0.81	
8180.00	88.710	160.510	6124.51	1476.60	-1810.00	-682.56	1637675.54	14313472.78	39°24'58.3082"N	81°00'34.9400"W	1934.42	200.662	2.15	-1.42	-1.61	
8275.00	89.600	159.500	6125.91	1571.58	-1899.26	-650.08	1637708.01	14313383.55	39°24'57.4260"N	81°00'34.5260"W	2007.44	198.895	1.42	0.94	-1.06	
8369.00	90.620	161.130	6125.73	1665.58	-1987.77	-618.42	1637739.66	14313295.08	39°24'56.5514"N	81°00'34.1225"W	2081.74	197.282	2.05	1.09	1.73	
8464.00	90.400	161.670	6124.89	1760.56	-2077.80	-588.12	1637769.95	14313205.09	39°24'55.6615"N	81°00'33.7363"W	2159.43	195.804	0.61	-0.23	0.57	
8559.00	89.660	160.800	6124.84	1855.55	-2167.75	-557.56	1637800.49	14313115.17	39°24'54.7726"N	81°00'33.3468"W	2238.30	194.424	1.20	-0.78	-0.92	
8654.00	89.690	160.760	6125.38	1950.54	-2257.45	-526.29	1637831.76	14313025.51	39°24'53.8860"N	81°00'32.9482"W	2317.99	193.123	0.05	0.03	-0.04	
8748.00	89.970	160.600	6125.66	2044.54	-2346.16	-495.19	1637862.84	14312936.84	39°24'53.0093"N	81°00'32.5519"W	2397.85	191.918	0.34	0.30	-0.17	
8843.00	90.280	160.370	6125.45	2139.54	-2435.70	-463.45	1637894.56	14312847.33	39°24'52.1244"N	81°00'32.1474"W	2479.40	190.773	0.41	0.33	-0.24	
8938.00	89.690	160.660	6125.47	2234.54	-2525.26	-431.76	1637926.24	14312757.81	39°24'51.2392"N	81°00'31.7436"W	2561.90	189.703	0.69	-0.62	0.31	
9033.00	89.320	158.470	6126.29	2329.52	-2614.27	-398.60	1637959.39	14312668.83	39°24'50.3595"N	81°00'31.3209"W	2644.48	188.669	2.34	-0.39	-2.31	
9127.00	89.850	159.170	6126.97	2423.48	-2701.92	-364.64	1637993.34	14312581.22	39°24'49.4933"N	81°00'30.8881"W	2726.41	187.686	0.93	0.56	0.74	
9222.00	89.750	159.790	6127.31	2518.47	-2790.89	-331.34	1638026.63	14312492.28	39°24'48.6140"N	81°00'30.4637"W	2810.49	186.771	0.66	-0.11	0.65	
9317.00	89.420	159.960	6127.99	2613.46	-2880.09	-298.65	1638059.30	14312403.12	39°24'47.7324"N	81°00'30.0471"W	2895.53	185.920	0.39	-0.35	0.18	
9411.00	89.720	159.940	6128.70	2707.45	-2968.39	-266.43	1638091.51	14312314.86	39°24'46.8597"N	81°00'29.6364"W	2980.32	185.129	0.32	0.32	-0.02	
9506.00	89.450	159.830	6129.39	2802.45	-3057.59	-233.76	1638124.17	14312225.69	39°24'45.9781"N	81°00'29.2201"W	3066.51	184.372	0.31	-0.28	-0.12	
9601.00	89.600	159.670	6130.18	2897.44	-3146.72	-200.88	1638157.03	14312136.60	39°24'45.0973"N	81°00'28.8011"W	3153.12	183.653	0.23	0.16	-0.17	
9695.00	89.380	159.760	6131.01	2991.43	-3234.88	-168.29	1638189.61	14312048.47	39°24'44.2259"N	81°00'28.3858"W	3239.26	182.978	0.25	-0.23	0.10	
9790.00	89.230	159.490	6132.16	3086.41	-3323.93	-135.22	1638222.67	14311959.45	39°24'43.3458"N	81°00'27.9643"W	3326.68	182.329	0.33	-0.16	-0.28	
9884.00	89.510	160.020	6133.20	3180.40	-3412.12	-102.69	1638255.18	14311871.30	39°24'42.4742"N	81°00'27.5498"W	3413.66	181.724	0.64	0.30	0.56	
9979.00	89.350	159.570	6134.14	3275.39	-3501.27	-69.88	1638287.98	14311782.19	39°24'41.5932"N	81°00'27.1317"W	3501.96	181.143	0.50	-0.17	-0.47	
10074.00	89.320	160.310	6135.25	3370.38	-3590.50	-37.30	1638320.55	14311693.00	39°24'40.7113"N	81°00'26.7165"W	3590.69	180.595	0.78	-0.03	0.78	
10169.00	89.110	159.440	6136.55	3465.36	-3679.69	-4.61	1638353.22	14311603.84	39°24'39.8298"N	81°00'26.3000"W	3679.69	180.072	0.94	-0.22	-0.92	
10264.00	88.920	158.800	6138.18	3560.32	-3768.44	29.24	1638387.06	14311515.13	39°24'38.9527"N	81°00'25.8686"W	3768.55	179.555	0.70	-0.20	-0.67	
10358.00	88.890	159.700	6139.98	3654.29	-3856.32	62.54	1638420.34	14311427.28	39°24'38.0841"N	81°00'25.4443"W	3856.83	179.071	0.96	-0.03	0.96	
10453.00	89.110	159.790	6141.63	3749.26	-3945.43	95.42	1638453.21	14311338.20	39°24'37.2034"N	81°00'25.0252"W	3946.59	178.615	0.25	0.23	0.09	
10547.00	88.680	159.950	6143.45	3843.24	-4033.67	127.76	1638485.54	14311250.00	39°24'36.3313"N	81°00'24.6131"W	4035.70	178.186	0.49	-0.46	0.17	
10642.00	89.480	159.440	6144.97	3938.22	-4122.76	160.73	1638518.49	14311160.95	39°24'35.4508"N	81°00'24.1931"W	4125.89	177.767	1.00	0.84	-0.54	

RECEIVED  
 Office of Oil and Gas  
**AUG 21 2023**  
 WV Department of  
 Environmental Protection



# Actual Wellpath Report

Martindill Unit 1H AWP Proj: 19030'  
Page 6 of 11



## REFERENCE WELLPATH IDENTIFICATION

Operator	ANTERO RESOURCES CORPORATION	Well	Martindill Unit 1H
Field	Tyler	API	47-095-02813-0000
Facility	Wrigley Pad	Wellbore	Martindill Unit 1H AWB
Slot	Slot C		

## WELLPATH DATA (205 stations)

MD [ft]	Inclination [°]	Azimuth [°]	TVD [ft]	Vert Sect [ft]	North [ft]	East [ft]	Grid East [US ft]	Grid North [US ft]	Latitude	Longitude	Closure Dist [ft]	Closure Dir [°]	DLS [°/100ft]	Build Rate [°/100ft]	Turn Rate [°/100ft]	Comments
10736.00	89.200	159.530	6146.06	4032.20	-4210.79	193.67	1638551.42	14311072.95	39°24'34.5808"N	81°00'23.7733"W	4215.24	177.367	0.31	-0.30	0.10	
10831.00	89.850	160.080	6146.84	4127.19	-4299.95	226.46	1638584.20	14310983.83	39°24'33.6996"N	81°00'23.3554"W	4305.91	176.985	0.90	0.68	0.58	
10925.00	91.020	161.820	6146.13	4221.18	-4388.79	257.14	1638614.87	14310895.02	39°24'32.8216"N	81°00'22.9645"W	4396.32	176.647	2.23	1.24	1.85	
11020.00	89.290	157.840	6145.87	4316.15	-4477.94	289.89	1638647.60	14310805.91	39°24'31.9404"N	81°00'22.5472"W	4487.32	176.296	4.57	-1.82	-4.19	
11115.00	89.140	159.360	6147.17	4411.09	-4566.38	324.55	1638682.25	14310717.50	39°24'31.0664"N	81°00'22.1055"W	4577.90	175.935	1.61	-0.16	1.60	
11209.00	89.540	158.710	6148.26	4505.06	-4654.15	358.18	1638715.86	14310629.77	39°24'30.1989"N	81°00'21.6770"W	4667.92	175.599	0.81	0.43	-0.69	
11304.00	89.660	159.970	6148.92	4600.04	-4743.04	391.69	1638749.37	14310540.92	39°24'29.3204"N	81°00'21.2499"W	4759.19	175.279	1.33	0.13	1.33	
11398.00	88.980	158.840	6150.04	4694.01	-4831.02	424.76	1638782.42	14310452.97	39°24'28.4508"N	81°00'20.8287"W	4849.66	174.975	1.40	-0.72	-1.20	
11493.00	88.950	159.140	6151.75	4788.97	-4919.69	458.81	1638816.46	14310364.33	39°24'27.5745"N	81°00'20.3947"W	4941.04	174.672	0.32	-0.03	0.32	
11587.00	89.140	158.060	6153.32	4882.91	-5007.20	493.10	1638850.74	14310276.86	39°24'26.7097"N	81°00'19.9578"W	5031.42	174.376	1.17	0.20	-1.15	
11682.00	89.750	159.580	6154.24	4977.86	-5095.78	527.43	1638885.04	14310188.32	39°24'25.8342"N	81°00'19.5205"W	5123.00	174.091	1.72	0.64	1.60	
11871.00	88.770	158.580	6156.68	5166.79	-5272.30	594.90	1638952.49	14310011.87	39°24'24.0896"N	81°00'18.6607"W	5305.75	173.562	0.74	-0.52	-0.53	
11966.00	90.060	160.650	6157.65	5261.77	-5361.34	627.99	1638985.57	14309922.87	39°24'23.2096"N	81°00'18.2391"W	5397.99	173.319	2.57	1.36	2.18	
12061.00	90.580	161.500	6157.12	5356.76	-5451.20	658.80	1639016.37	14309833.04	39°24'22.3215"N	81°00'17.8465"W	5490.86	173.109	1.05	0.55	0.89	
12155.00	88.710	160.510	6157.70	5450.75	-5540.07	689.39	1639046.95	14309744.20	39°24'21.4431"N	81°00'17.4567"W	5582.80	172.907	2.25	-1.99	-1.05	
12250.00	87.100	159.680	6161.17	5545.68	-5629.34	721.71	1639079.25	14309654.98	39°24'20.5609"N	81°00'17.0449"W	5675.41	172.694	1.91	-1.69	-0.87	
12345.00	90.950	162.770	6162.79	5640.63	-5719.24	752.27	1639109.80	14309565.11	39°24'19.6723"N	81°00'16.6555"W	5768.50	172.507	5.20	4.05	3.25	
12439.00	89.720	161.170	6162.24	5734.59	-5808.62	781.37	1639138.88	14309475.77	39°24'18.7890"N	81°00'16.2848"W	5860.94	172.339	2.15	-1.31	-1.70	
12534.00	89.690	160.390	6162.73	5829.58	-5898.32	812.64	1639170.14	14309386.10	39°24'17.9024"N	81°00'15.8864"W	5954.04	172.155	0.82	-0.03	-0.82	
12628.00	90.150	160.330	6162.86	5923.58	-5986.85	844.23	1639201.72	14309297.61	39°24'17.0274"N	81°00'15.4838"W	6046.08	171.973	0.49	0.49	-0.06	
12720.00	89.230	159.360	6163.36	6015.57	-6073.21	875.93	1639233.41	14309211.28	39°24'16.1739"N	81°00'15.0800"W	6136.06	171.793	1.45	-1.00	-1.05	
12814.00	89.780	159.860	6164.17	6109.56	-6161.32	908.68	1639266.15	14309123.21	39°24'15.3031"N	81°00'14.6627"W	6227.97	171.610	0.79	0.59	0.53	
12909.00	88.000	159.750	6166.01	6204.53	-6250.46	941.47	1639298.92	14309034.10	39°24'14.4221"N	81°00'14.2450"W	6320.97	171.434	1.88	-1.87	-0.12	
13003.00	90.370	161.720	6167.35	6298.51	-6339.18	972.48	1639329.92	14308945.42	39°24'13.5453"N	81°00'13.8499"W	6413.34	171.278	3.28	2.52	2.10	
13192.00	88.650	159.010	6168.97	6487.48	-6517.16	1035.97	1639393.39	14308767.51	39°24'11.7862"N	81°00'13.0409"W	6598.98	170.968	1.70	-0.91	-1.43	
13287.00	90.460	160.430	6169.70	6582.46	-6606.26	1068.90	1639426.30	14308678.45	39°24'10.9056"N	81°00'12.6214"W	6692.18	170.809	2.42	1.91	1.49	
13381.00	90.090	160.260	6169.25	6676.46	-6694.78	1100.52	1639457.90	14308589.96	39°24'10.0307"N	81°00'12.2186"W	6784.63	170.665	0.43	-0.39	-0.18	
13476.00	90.550	160.600	6168.72	6771.46	-6784.29	1132.34	1639489.71	14308500.48	39°24'9.1460"N	81°00'11.8132"W	6878.14	170.524	0.60	0.48	0.36	
13570.00	90.650	160.090	6167.74	6865.45	-6872.81	1163.95	1639521.31	14308412.00	39°24'8.2712"N	81°00'11.4104"W	6970.67	170.388	0.55	0.11	-0.54	
13644.00	88.710	160.590	6168.15	6939.45	-6942.49	1188.85	1639546.20	14308342.35	39°24'7.5825"N	81°00'11.0933"W	7043.55	170.283	2.71	-2.62	0.68	

RECEIVED  
Office of Oil and Gas  
AUG 21 2023  
WV Department of  
Environmental Protection



# Actual Wellpath Report

Martindill Unit 1H AWP Proj: 19030'  
Page 7 of 11



REFERENCE WELLPATH IDENTIFICATION			
Operator	ANTERO RESOURCES CORPORATION	Well	Martindill Unit 1H
Field	Tyler	API	47-095-02813-0000
Facility	Wrigley Pad	Wellbore	Martindill Unit 1H AWB
Slot	Slot C		

WELLPATH DATA (205 stations)																
MD [ft]	Inclination [°]	Azimuth [°]	TVD [ft]	Vert Sect [ft]	North [ft]	East [ft]	Grid East [US ft]	Grid North [US ft]	Latitude	Longitude	Closure Dist [ft]	Closure Dir [°]	DLS [°/100ft]	Build Rate [°/100ft]	Turn Rate [°/100ft]	Comments
13739.00	90.980	160.560	6168.41	7034.44	-7032.08	1220.44	1639577.78	14308252.80	39°24'6.6971"N	81°00'10.6908"W	7137.20	170.154	2.39	2.39	-0.03	
13834.00	89.290	159.740	6168.18	7129.44	-7121.43	1252.70	1639610.02	14308163.48	39°24'5.8140"N	81°00'10.2798"W	7230.77	170.023	1.98	-1.78	-0.86	
13928.00	89.170	159.370	6169.45	7223.42	-7209.50	1285.53	1639642.84	14308075.45	39°24'4.9435"N	81°00'9.8616"W	7323.21	169.890	0.41	-0.13	-0.39	
14022.00	90.000	161.010	6170.13	7317.41	-7297.93	1317.38	1639674.68	14307987.05	39°24'4.0695"N	81°00'9.4557"W	7415.88	169.767	1.96	0.88	1.74	
14117.00	89.080	159.620	6170.89	7412.40	-7387.37	1349.38	1639706.67	14307897.65	39°24'3.1855"N	81°00'9.0481"W	7509.60	169.648	1.75	-0.97	-1.46	
14211.00	89.290	158.770	6172.23	7506.37	-7475.23	1382.76	1639740.04	14307809.82	39°24'2.3172"N	81°00'8.6228"W	7602.05	169.520	0.93	0.22	-0.90	
14306.00	90.490	161.150	6172.41	7601.36	-7564.47	1415.32	1639772.58	14307720.62	39°24'1.4352"N	81°00'8.2081"W	7695.74	169.402	2.81	1.26	2.51	
14400.00	89.970	162.680	6172.03	7695.32	-7653.83	1444.49	1639801.74	14307631.30	39°24'0.5521"N	81°00'7.8364"W	7788.94	169.312	1.72	-0.55	1.63	
14495.00	89.140	161.710	6172.77	7790.27	-7744.27	1473.54	1639830.78	14307540.89	39°23'59.6581"N	81°00'7.4663"W	7883.21	169.227	1.34	-0.87	-1.02	
14589.00	89.510	161.780	6173.88	7884.24	-7833.53	1502.98	1639860.21	14307451.66	39°23'58.7759"N	81°00'7.0912"W	7976.42	169.139	0.40	0.39	0.07	
14684.00	90.310	162.310	6174.03	7979.20	-7923.91	1532.27	1639889.48	14307361.33	39°23'57.8827"N	81°00'6.7182"W	8070.70	169.056	1.01	0.84	0.56	
14778.00	89.600	162.880	6174.10	8073.13	-8013.60	1560.39	1639917.59	14307271.67	39°23'56.9962"N	81°00'6.3600"W	8164.11	168.981	0.97	-0.76	0.61	
14872.00	90.150	162.660	6174.31	8167.05	-8103.38	1588.23	1639945.42	14307181.92	39°23'56.1089"N	81°00'6.0053"W	8257.56	168.911	0.63	0.59	-0.23	
14967.00	89.570	162.250	6174.54	8261.99	-8193.96	1616.87	1639974.05	14307091.38	39°23'55.2136"N	81°00'5.6405"W	8351.96	168.838	0.75	-0.61	-0.43	
15062.00	89.450	162.320	6175.35	8356.94	-8284.45	1645.77	1640002.94	14307000.93	39°23'54.3193"N	81°00'5.2722"W	8446.35	168.764	0.15	-0.13	0.07	
15156.00	89.260	162.700	6176.41	8450.87	-8374.10	1674.02	1640031.18	14306911.31	39°23'53.4332"N	81°00'4.9124"W	8539.79	168.695	0.45	-0.20	0.40	
15251.00	89.420	160.680	6177.50	8545.83	-8464.28	1703.86	1640061.01	14306821.17	39°23'52.5419"N	81°00'4.5322"W	8634.07	168.618	2.13	0.17	-2.13	
15346.00	89.540	160.070	6178.37	8640.83	-8553.76	1735.77	1640092.90	14306731.73	39°23'51.6576"N	81°00'4.1258"W	8728.10	168.529	0.65	0.13	-0.64	
15535.00	89.350	159.470	6180.20	8829.81	-8731.09	1801.12	1640158.23	14306554.47	39°23'49.9049"N	81°00'3.2933"W	8914.93	168.344	0.33	-0.10	-0.32	
15629.00	89.910	159.390	6180.80	8923.79	-8819.10	1834.15	1640191.24	14306466.50	39°23'49.0351"N	81°00'2.8726"W	9007.81	168.251	0.60	0.60	-0.09	
15724.00	90.280	160.210	6180.65	9018.79	-8908.25	1866.95	1640224.03	14306377.38	39°23'48.1540"N	81°00'2.4548"W	9101.78	168.164	0.95	0.39	0.86	
15819.00	89.970	159.630	6180.44	9113.78	-8997.48	1899.57	1640256.63	14306288.19	39°23'47.2721"N	81°00'2.0393"W	9195.81	168.079	0.69	-0.33	-0.61	
15913.00	89.940	160.260	6180.51	9207.78	-9085.78	1931.80	1640288.85	14306199.93	39°23'46.3994"N	81°00'1.6287"W	9288.87	167.997	0.67	-0.03	0.67	
16008.00	89.570	159.850	6180.92	9302.77	-9175.08	1964.21	1640321.25	14306110.66	39°23'45.5168"N	81°00'1.2159"W	9382.97	167.916	0.58	-0.39	-0.43	
16102.00	89.480	159.220	6181.70	9396.76	-9263.14	1997.07	1640354.10	14306022.63	39°23'44.6464"N	81°00'0.7973"W	9475.97	167.834	0.68	-0.10	-0.67	
16197.00	90.030	161.620	6182.10	9491.75	-9352.64	2028.91	1640385.92	14305933.17	39°23'43.7618"N	81°00'0.3918"W	9570.18	167.760	2.59	0.58	2.53	
16292.00	89.290	160.600	6182.67	9586.74	-9442.52	2059.66	1640416.66	14305843.33	39°23'42.8735"N	81°00'0.0001"W	9664.54	167.695	1.33	-0.78	-1.07	
16386.00	89.200	159.040	6183.91	9680.72	-9530.74	2092.08	1640449.07	14305755.14	39°23'42.0016"N	80°59'59.5871"W	9757.65	167.619	1.66	-0.10	-1.66	
16481.00	89.780	160.420	6184.75	9775.71	-9619.85	2124.99	1640481.97	14305666.07	39°23'41.1209"N	80°59'59.1679"W	9851.76	167.544	1.58	0.61	1.45	
16575.00	89.690	160.580	6185.19	9869.71	-9708.46	2156.37	1640513.33	14305577.50	39°23'40.2451"N	80°59'58.7682"W	9945.05	167.477	0.20	-0.10	0.17	

RECEIVED  
 Office of Oil and Gas  
 AUG 21 2023  
 WV Department of  
 Environmental Protection





# Actual Wellpath Report

Martindill Unit 1H AWP Proj: 19030'  
Page 8 of 11



REFERENCE WELLPATH IDENTIFICATION				
Operator	ANTERO RESOURCES CORPORATION		Well	Martindill Unit 1H
Field	Tyler		API	47-095-02813-0000
Facility	Wrigley Pad		Wellbore	Martindill Unit 1H AWB
Slot	Slot C			

WELLPATH DATA (205 stations) † = interpolated, ‡ = extrapolated station																
MD [ft]	Inclination [°]	Azimuth [°]	TVD [ft]	Vert Sect [ft]	North [ft]	East [ft]	Grid East [US ft]	Grid North [US ft]	Latitude	Longitude	Closure Dist [ft]	Closure Dir [°]	DLS [°/100ft]	Build Rate [°/100ft]	Turn Rate [°/100ft]	Comments
16670.00	89.630	160.290	6185.75	9964.71	-9797.97	2188.18	1640545.13	14305488.02	39°23'39.3604"N	80°59'58.3630"W	10039.34	167.411	0.31	-0.06	-0.31	
16765.00	89.880	160.260	6186.16	10059.71	-9887.40	2220.25	1640577.18	14305398.63	39°23'38.4766"N	80°59'57.9546"W	10133.61	167.344	0.27	0.26	-0.03	
16860.00	89.630	160.610	6186.56	10154.71	-9976.91	2252.06	1640608.98	14305309.15	39°23'37.5918"N	80°59'57.5494"W	10227.93	167.280	0.45	-0.26	0.37	
16955.00	89.720	160.570	6187.10	10249.70	-10066.51	2283.63	1640640.54	14305219.59	39°23'36.7063"N	80°59'57.1473"W	10322.28	167.219	0.10	0.09	-0.04	
17144.00	89.660	159.570	6188.12	10438.69	-10244.18	2348.05	1640704.94	14305041.98	39°23'34.9502"N	80°59'56.3267"W	10509.84	167.090	0.53	-0.03	-0.53	
17238.00	89.940	160.800	6188.45	10532.69	-10332.62	2379.92	1640736.79	14304953.59	39°23'34.0762"N	80°59'55.9209"W	10603.16	167.029	1.34	0.30	1.31	
17332.00	89.720	160.380	6188.73	10626.69	-10421.27	2411.16	1640768.02	14304864.97	39°23'33.1999"N	80°59'55.5230"W	10696.57	166.973	0.50	-0.23	-0.45	
17427.00	89.630	160.500	6189.27	10721.69	-10510.79	2442.96	1640799.81	14304775.49	39°23'32.3152"N	80°59'55.1179"W	10790.96	166.915	0.16	-0.09	0.13	
17522.00	89.820	159.570	6189.73	10816.68	-10600.08	2475.40	1640832.23	14304686.23	39°23'31.4327"N	80°59'54.7048"W	10885.28	166.855	1.00	0.20	-0.98	
17711.00	89.510	160.090	6190.83	11005.67	-10777.48	2540.56	1640897.37	14304508.90	39°23'29.6793"N	80°59'53.8748"W	11072.88	166.736	0.32	-0.16	0.28	
17806.00	89.720	160.790	6191.47	11100.67	-10867.00	2572.37	1640929.16	14304419.42	39°23'28.7946"N	80°59'53.4697"W	11167.31	166.682	0.77	0.22	0.74	
17900.00	89.630	160.590	6192.00	11194.67	-10955.71	2603.45	1640960.23	14304330.75	39°23'27.9178"N	80°59'53.0738"W	11260.80	166.633	0.23	-0.10	-0.21	
17995.00	89.720	160.050	6192.54	11289.66	-11045.16	2635.44	1640992.21	14304241.33	39°23'27.0337"N	80°59'52.6664"W	11355.22	166.580	0.58	0.09	-0.57	
18089.00	89.850	159.810	6192.89	11383.66	-11133.45	2667.70	1641024.46	14304153.08	39°23'26.1611"N	80°59'52.2556"W	11448.59	166.525	0.29	0.14	-0.26	
18183.00	89.750	160.120	6193.22	11477.66	-11221.76	2699.90	1641056.65	14304064.80	39°23'25.2882"N	80°59'51.8454"W	11541.98	166.472	0.35	-0.11	0.33	
18278.00	89.600	159.920	6193.76	11572.65	-11311.04	2732.36	1641089.10	14303975.56	39°23'24.4058"N	80°59'51.4320"W	11636.39	166.419	0.26	-0.16	-0.21	
18372.00	89.600	160.080	6194.42	11666.65	-11399.37	2764.51	1641121.23	14303887.26	39°23'23.5328"N	80°59'51.0226"W	11729.80	166.368	0.17	0.00	0.17	
18467.00	89.660	160.230	6195.03	11761.64	-11488.73	2796.76	1641153.47	14303797.94	39°23'22.6496"N	80°59'50.6118"W	11824.24	166.318	0.17	0.06	0.16	
18562.00	89.750	160.250	6195.52	11856.64	-11578.13	2828.88	1641185.57	14303708.57	39°23'21.7660"N	80°59'50.2028"W	11918.71	166.270	0.10	0.09	0.02	
18656.00	89.660	160.840	6196.00	11950.64	-11666.76	2860.19	1641216.87	14303619.98	39°23'20.8900"N	80°59'49.8041"W	12012.24	166.225	0.63	-0.10	0.63	
18751.00	89.260	160.580	6196.90	12045.63	-11756.42	2891.57	1641248.24	14303530.35	39°23'20.0038"N	80°59'49.4044"W	12106.80	166.182	0.50	-0.42	-0.27	
18845.00	88.770	159.760	6198.52	12139.62	-11844.84	2923.45	1641280.11	14303441.97	39°23'19.1300"N	80°59'48.9984"W	12200.28	166.136	1.02	-0.52	-0.87	
18940.00	89.350	159.960	6200.07	12234.60	-11934.02	2956.16	1641312.80	14303352.83	39°23'18.2485"N	80°59'48.5819"W	12294.70	166.087	0.65	0.61	0.21	
19005.00	89.080	158.510	6200.96	12299.58	-11994.79	2979.20	1641335.83	14303292.09	39°23'17.6479"N	80°59'48.2884"W	12359.23	166.051	2.27	-0.42	-2.23	
19030.00‡	89.080	158.510	6201.37	12324.56	-12018.04	2988.36	1641344.99	14303268.84	39°23'17.4180"N	80°59'48.1718"W	12384.01	166.036	0.00	0.00	0.00	Projected MD at TD: 19030'

RECEIVED  
 Office of Oil and Gas  
 AUG 21 2023  
 WV Department of  
 Environmental Protection



# Actual Wellpath Report

Martindill Unit 1H AWP Proj: 19030'  
Page 9 of 11



REFERENCE WELLPATH IDENTIFICATION			
Operator	ANTERO RESOURCES CORPORATION	Well	Martindill Unit 1H
Field	Tyler	API	47-095-02813-0000
Facility	Wrigley Pad	Wellbore	Martindill Unit 1H AWB
Slot	Slot C		

HOLE & CASING SECTIONS - Ref Wellbore: Martindill Unit 1H AWB    Ref Wellpath: Martindill Unit 1H AWP Proj: 19030'									
String/Diameter	Start MD [ft]	End MD [ft]	Interval [ft]	Start TVD [ft]	End TVD [ft]	Start N/S [ft]	Start E/W [ft]	End N/S [ft]	End E/W [ft]
20in Conductor	30.00	130.00	100.00	30.00	130.00	0.00	0.00	-0.26	0.00
17.5in Open Hole	130.00	618.00	488.00	130.00	617.99	-0.26	0.00	-1.94	1.59
13.375in Casing Surface	30.00	598.00	568.00	30.00	597.99	0.00	0.00	-1.87	1.50
12.25in Open Hole	618.00	3350.00	2732.00	617.99	3257.45	-1.94	1.59	146.96	-628.49
9.625in Casing Intermediate	30.00	3320.00	3290.00	30.00	3228.51	0.00	0.00	144.69	-620.93
8.75in Open Hole	3350.00	5477.00	2127.00	3257.45	5285.44	146.96	-628.49	290.65	-1251.13
8.5in Open Hole	5477.00	19030.00	13553.00	5285.44	6201.37	290.65	-1251.13	-12018.04	2988.36
5.5in Casing Production	30.00	19010.00	18980.00	30.00	6201.04	0.00	0.00	-11999.44	2981.03

RECEIVED  
 Office of Oil and Gas  
 WV Department of  
 Environmental Protection  
 AUG 21 2023



# Actual Wellpath Report

Martindill Unit 1H AWP Proj: 19030'  
Page 10 of 11


**REFERENCE WELLPATH IDENTIFICATION**

Operator	ANTERO RESOURCES CORPORATION	Well	Martindill Unit 1H
Field	Tyler	API	47-095-02813-0000
Facility	Wrigley Pad	Wellbore	Martindill Unit 1H AWB
Slot	Slot C		

**TARGETS**

Name	TVD [ft]	North [ft]	East [ft]	Grid East [US ft]	Grid North [US ft]	Latitude	Longitude	Shape
Martindill Unit 1H POE Rev-3	6060.00	-166.92	-1243.13	1637115.20	14315115.20	39°25'14.5470"N	81°00'42.0851"W	point
Martindill Unit 1H LP Rev-3	6110.00	-411.11	-1156.28	1637202.02	14314871.10	39°25'12.1336"N	81°00'40.9780"W	point
Martindill Unit 1H BHL Rev-4	6174.62	-12039.60	2979.70	1641336.33	14303247.29	39°23'17.2050"N	80°59'48.2821"W	point
Martindill Unit 1H BHL Rev-3	6174.98	-12103.54	3002.44	1641359.06	14303183.38	39°23'16.5731"N	80°59'47.9925"W	point
Martindill Unit 1H 50' L/R Hard Line Rev-2	6250.00	-6103.26	868.28	1639225.76	14309181.24	39°24'15.8769"N	81°00'15.1774"W	rectangle
2D Rectangle 12601.3 x 100.								

**WELLPATH COMPOSITION - Ref Wellbore: Martindill Unit 1H AWB Ref Wellpath: Martindill Unit 1H AWP Proj: 19030'**

Start MD [ft]	End MD [ft]	Positional Uncertainty Model	Log Name/Comment	Wellbore	Survey Date
30.00	647.00	Gyrodata 2015 - GC+WIR+DPIPE	01 Gyrodata MS Gyro <17-1/2"> (100'-647')	Martindill Unit 1H AWB	1/19/2023
647.00	3275.00	BH NaviTrak (2019) (Axial Corr+HRGM)	02 APS EM <12-1/4"> (647')(770'-3275')	Martindill Unit 1H AWB	1/19/2023
3275.00	5370.00	BH NaviTrak (2019) (Axial Corr+HRGM)	03 APS EM <8-3/4"> (3275')(3411'-5370')	Martindill Unit 1H AWB	2/16/2023
5370.00	19030.00	BH AutoTrak Curve/eXpress (2019) (HRGM, Short spacing)	04 BH AT Curve <8-1/2"> (5370')(5457'-19005')	Martindill Unit 1H AWB	2/16/2023

RECEIVED  
Office of Oil and Gas  
AUG 21 2023  
WV Department of  
Environmental Protection



# Actual Wellpath Report

Martindill Unit 1H AWP Proj: 19030'  
Page 11 of 11



REFERENCE WELLPATH IDENTIFICATION			
Operator	ANTERO RESOURCES CORPORATION	Well	Martindill Unit 1H
Field	Tyler	API	47-095-02813-0000
Facility	Wrigley Pad	Wellbore	Martindill Unit 1H AWB
Slot	Slot C		

COMMENTS
<p><b>Wellpath general comments</b> API: 47-095-02813-0000 BH Job #: 111653836 Rig: H&amp;P 531 Duration: 2/21/2023-3/3/2023 Gyrodata MS Gyro &lt;17-1/2"&gt; (100'-647') APS EM &lt;12-1/4"&gt; (647')(770'-3275') APS EM &lt;8-3/4"&gt; (3275')(3411'-5370') BH AT Curve &lt;8-1/2"&gt; (5370')(5457'-19005') Sycamore: 6121' MD Middlesex: 6264' MD Burkett: 6432' MD Marcellus POE: 6490' MD Projected MD at TD: 19030'</p>

RECEIVED  
Office of Oil and Gas  
AUG 21 2023  
WV Department of  
Environmental Protection