



ANTERO RESOURCES CORPORATION



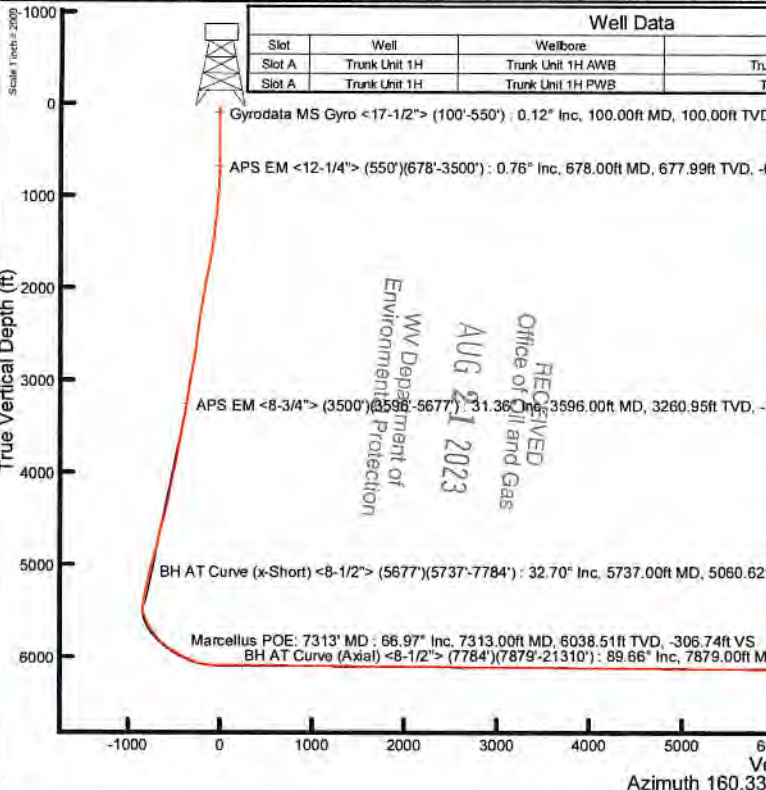
Location: Tyler County, WV
 Field: Tyler
 Facility: Wrigley Pad

Slot: Slot A
 Well: Trunk Unit 1H
 Wellbore: Trunk Unit 1H PWB

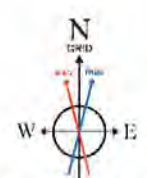
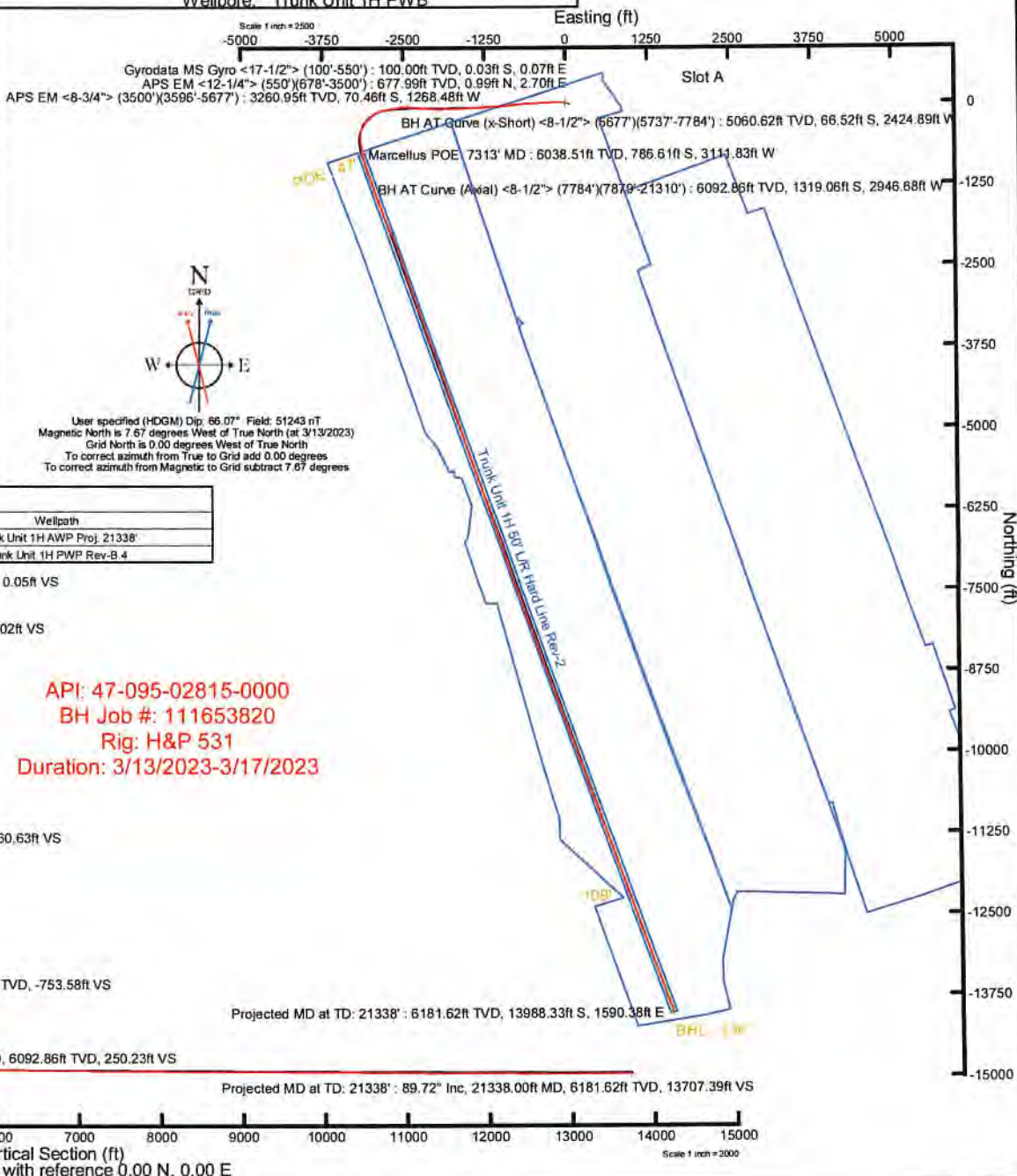
Plot reference wellpath is Trunk Unit 1H PWP Rev-B.4	Grid System: NAD27 / UTM Zone 17 North, US feet
True vertical depths are referenced to H&P 531 (RKB)	North Reference: Grid north
Reference wellpath measured depths are referenced to H&P 531 (RKB)	Scale: True distance
H&P 531 (RKB) to Mean Sea Level: 967 feet	Coordinates are in feet referenced to Slot
Mean Sea Level to Ground level (At Slot: Slot A): -937 feet	Depths are in feet
Offset wellpath MDs are referenced to each path's default MD datum	Created by: edjwagner on 2023-04-28, Date/Time: WA, MPL, EASTERNUS, Delo

Location Information					
Facility Name		Grid East (US ft)	Grid North (US ft)	Latitude	Longitude
Wrigley Pad		1638329.430	14315291.580	39°25'16.2920"N	81°00'26.6070"W
Slot	Local N (ft)	Local E (ft)	Grid East (US ft)	Grid North (US ft)	Latitude
Slot A	0.00	0.00	1638329.430	14315291.580	39°25'16.2920"N
Comment: Trunk Unit 1H					
H&P 531 (RKB) to Ground level (At Slot: Slot A)		30ft			
Mean Sea Level to Ground level (At Slot: Slot A)		-937ft			
H&P 531 (RKB) to Mean Sea Level		967ft			

Well Profile Data							
Design Comment	MD (ft)	Inc. (")	Az (")	TVD (ft)	Local N (ft)	Local E (ft)	DLS ("/100ft)
Tie On	3500.00	31.380	266.460	3178.98	-87.32	-1218.60	1.33
Proj. to Bottom	3573.00	31.380	266.460	3241.30	-89.67	-1256.54	0.00
Drill Out	3653.00	31.380	266.460	3309.60	-72.24	-1256.12	0.00
End of 3D Arc	3725.06	32.936	269.280	3370.60	-73.65	-1336.44	3.00
Curve KOP	5828.91	32.936	269.280	5136.32	-88.02	-2480.22	0.00
Build	6244.81	57.317	261.535	5427.76	-115.64	-2771.01	6.00
POE	7338.26	68.681	160.334	6047.00	-801.75	-3126.70	8.00
Landing Pt.	7601.02	89.700	160.334	6096.00	-1043.42	-3040.33	8.00
BHL	21361.00	89.700	160.334	6168.05	-14000.64	1590.25	0.00



Well Data			
Slot	Well	Wellbore	Wellpath
Slot A	Trunk Unit 1H	Trunk Unit 1H AWB	Trunk Unit 1H AWP Proj. 21338'
Slot A	Trunk Unit 1H	Trunk Unit 1H PWB	Trunk Unit 1H PWP Rev-B.4



User specified (HDGM) Dip: 66.07° Field: 51243 nT
 Magnetic North is 7.67 degrees West of True North (at 3/13/2023)
 Grid North is 0.00 degrees West of True North
 To correct azimuth from True to Grid add 0.00 degrees
 To correct azimuth from Magnetic to Grid subtract 7.67 degrees

RECEIVED
 Office of Oil and Gas
 AUG 21 2023
 WV Department of
 Environmental Protection

MD



Actual Wellpath Report

Trunk Unit 1H AWP Proj: 21338'

Page 1 of 12



REFERENCE WELLPATH IDENTIFICATION			
Operator	ANTERO RESOURCES CORPORATION	Well	Trunk Unit 1H
Field	Tyler	API	47-095-02815-0000
Facility	Wrigley Pad	Wellbore	Trunk Unit 1H AWB
Slot	Slot A		

REPORT SETUP INFORMATION			
Projection System	NAD27 / UTM Zone 17 North, US feet	Software System	WellArchitect® 6.0
North Reference	Grid	User	Edsaryar
Scale	0.999600	Report Generated	4/28/2023 at 6:07:32 PM
Convergence at slot	0.00°	Database	WA_MPL_EASTERNUS_Defn

WELLPATH LOCATION						
	Local coordinates		Grid coordinates		Geographic coordinates	
	North[ft]	East[ft]	Easting[US ft]	Northing[US ft]	Latitude	Longitude
Slot Location	0.00	0.00	1638329.43	14315291.56	39°25'16.2920"N	81°00'26.6070"W
Facility Reference Pt			1638329.43	14315291.56	39°25'16.2920"N	81°00'26.6070"W
Field Reference Pt			0.00	0.00	0°00'0.0000"	85°29'19.3013"W

WELLPATH DATUM			
Calculation method	Minimum curvature	H&P 531 (RKB) to Facility Vertical Datum	967.00ft
Horizontal Reference Pt	Slot	H&P 531 (RKB) to Mean Sea Level	967.00ft
Vertical Reference Pt	H&P 531 (RKB)	H&P 531 (RKB) to Ground Level at Slot (Slot A)	30.00ft
MD Reference Pt	H&P 531 (RKB)	Section Origin	N 0.00, E 0.00 ft
Field Vertical Reference	Mean Sea Level	Section Azimuth	160.33°

RECEIVED
 Office of Oil and Gas
 AUG 21 2023
 WY Department of
 Environmental Protection



Actual Wellpath Report

Trunk Unit 1H AWP Proj: 21338'
Page 2 of 12



REFERENCE WELLPATH IDENTIFICATION			
Operator	ANTERO RESOURCES CORPORATION	Well	Trunk Unit 1H
Field	Tyler	API	47-095-02815-0000
Facility	Wrigley Pad	Wellbore	Trunk Unit 1H AWP
Slot	Slot A		

WELLPATH DATA (233 stations) † = interpolated, ‡ = extrapolated station																
MD (ft)	Inclination (°)	Azimuth (°)	TVD (ft)	Vert Sect (ft)	North (ft)	East (ft)	Grid East (US ft)	Grid North (US ft)	Latitude	Longitude	Closure Dist (ft)	Closure Dir (°)	DLS (°/100ft)	Build Rate (°/100ft)	Turn Rate (°/100ft)	Comments
0.00†	0.000	112.090	0.00	0.00	0.00	0.00	1638329.43	14315291.56	39°25'16.2920"N	81°00'26.6070"W	0.00	0.000	0.00	0.00	0.00	
30.00	0.000	112.090	30.00	0.00	0.00	0.00	1638329.43	14315291.56	39°25'16.2920"N	81°00'26.6070"W	0.00	0.000	0.00	0.00	0.00	
100.00	0.120	112.090	100.00	0.05	-0.03	0.07	1638329.50	14315291.53	39°25'16.2917"N	81°00'26.6062"W	0.07	112.090	0.17	0.17	0.00	Gyrodata MS Gyro <17-1/2"> (100'-550')
200.00	0.210	66.740	200.00	0.11	0.01	0.33	1638329.76	14315291.57	39°25'16.2921"N	81°00'26.6028"W	0.33	89.068	0.15	0.09	-45.35	
300.00	0.430	82.090	300.00	0.17	0.13	0.87	1638330.30	14315291.69	39°25'16.2933"N	81°00'26.5959"W	0.88	81.570	0.23	0.22	15.35	
400.00	0.390	69.740	400.00	0.25	0.30	1.56	1638330.99	14315291.86	39°25'16.2950"N	81°00'26.5871"W	1.59	79.182	0.10	-0.04	-12.35	
500.00	0.460	80.750	499.99	0.31	0.48	2.28	1638331.71	14315292.04	39°25'16.2968"N	81°00'26.5780"W	2.33	78.079	0.11	0.07	11.01	
550.00	0.640	84.210	549.99	0.42	0.54	2.76	1638332.18	14315292.10	39°25'16.2974"N	81°00'26.5719"W	2.81	78.878	0.37	0.36	6.92	
678.00	0.760	296.160	677.99	-0.02	0.99	2.70	1638332.13	14315292.55	39°25'16.3018"N	81°00'26.5726"W	2.88	69.933	1.05	0.09	-115.66	APS EM <12-1/4"> (550')(678'-3500')
768.00	3.160	275.050	767.93	-1.49	1.47	-0.30	1638329.13	14315293.03	39°25'16.3065"N	81°00'26.6109"W	1.50	348.381	2.74	2.67	-23.46	
857.00	6.000	273.900	856.63	-4.37	2.00	-7.39	1638322.05	14315293.56	39°25'16.3118"N	81°00'26.7012"W	7.65	285.163	3.19	3.19	-1.29	
947.00	9.440	277.210	945.81	-9.59	3.25	-19.41	1638310.03	14315294.81	39°25'16.3241"N	81°00'26.8543"W	19.68	279.503	3.85	3.82	3.68	
1036.00	12.670	279.100	1033.14	-17.59	5.71	-36.29	1638293.15	14315297.27	39°25'16.3484"N	81°00'27.0695"W	36.74	278.941	3.65	3.63	2.12	
1131.00	13.960	276.170	1125.59	-27.60	8.59	-57.97	1638271.48	14315300.15	39°25'16.3769"N	81°00'27.3457"W	58.60	278.427	1.53	1.36	-3.08	
1225.00	15.710	272.370	1216.45	-37.32	10.33	-81.96	1638247.50	14315301.89	39°25'16.3941"N	81°00'27.6514"W	82.61	277.186	2.13	1.86	-4.04	
1320.00	18.850	268.050	1307.16	-46.82	10.34	-110.16	1638219.32	14315301.90	39°25'16.3942"N	81°00'28.0107"W	110.64	275.364	3.57	3.31	-4.55	
1414.00	22.260	267.050	1395.16	-56.57	8.91	-143.13	1638186.36	14315300.47	39°25'16.3800"N	81°00'28.4308"W	143.40	273.562	3.65	3.63	-1.06	
1509.00	25.720	265.960	1481.94	-67.30	6.53	-181.67	1638147.83	14315298.09	39°25'16.3564"N	81°00'28.9219"W	181.79	272.059	3.67	3.64	-1.15	
1604.00	29.420	268.010	1566.14	-79.94	4.27	-225.57	1638103.95	14315295.83	39°25'16.3340"N	81°00'29.4813"W	225.61	271.084	4.02	3.89	2.16	
1698.00	30.420	268.150	1647.61	-94.24	2.70	-272.43	1638057.11	14315294.26	39°25'16.3184"N	81°00'30.0784"W	272.44	270.567	1.07	1.06	0.15	
1793.00	31.340	267.790	1729.15	-109.01	0.97	-321.15	1638008.41	14315292.53	39°25'16.3013"N	81°00'30.6993"W	321.15	270.173	0.99	0.97	-0.38	
1887.00	32.230	267.360	1809.05	-123.69	-1.13	-370.62	1637958.96	14315290.43	39°25'16.2805"N	81°00'31.3296"W	370.62	269.825	0.98	0.95	-0.46	
1982.00	33.220	267.230	1888.97	-138.67	-3.55	-421.92	1637907.68	14315288.01	39°25'16.2565"N	81°00'31.9833"W	421.93	269.517	1.04	1.04	-0.14	
2079.00	33.990	266.630	1969.76	-154.01	-6.43	-475.53	1637854.09	14315285.13	39°25'16.2280"N	81°00'32.6664"W	475.57	269.225	0.86	0.79	-0.62	
2173.00	34.380	266.160	2047.52	-168.62	-9.75	-528.24	1637801.40	14315281.81	39°25'16.1951"N	81°00'33.3380"W	528.33	268.942	0.50	0.41	-0.50	
2268.00	32.260	266.000	2126.89	-182.79	-13.32	-580.30	1637749.37	14315278.25	39°25'16.1599"N	81°00'34.0014"W	580.45	268.685	2.23	-2.23	-0.17	
2363.00	31.650	265.580	2207.50	-196.19	-17.01	-630.44	1637699.24	14315274.56	39°25'16.1233"N	81°00'34.6403"W	630.67	268.455	0.68	-0.64	-0.44	
2458.00	31.480	264.740	2288.44	-208.92	-21.20	-679.99	1637649.71	14315270.37	39°25'16.0818"N	81°00'35.2717"W	680.32	268.214	0.50	-0.18	-0.88	
2552.00	31.450	264.550	2368.62	-221.05	-25.78	-728.84	1637600.88	14315265.79	39°25'16.0365"N	81°00'35.8942"W	729.30	267.974	0.11	-0.03	-0.20	
2647.00	31.020	263.220	2449.85	-232.60	-31.03	-777.82	1637551.92	14315260.55	39°25'15.9846"N	81°00'36.5183"W	778.44	267.716	0.86	-0.45	-1.40	

RECEIVED
 Office of Oil and Gas
 AUG 21 2023
 WV Department of
 Environmental Protection



Actual Wellpath Report

Trunk Unit 1H AWP Proj: 21338'
Page 3 of 12



REFERENCE WELLPATH IDENTIFICATION

Operator	ANTERO RESOURCES CORPORATION	Well	Trunk Unit 1H
Field	Tyler	API	47-095-02815-0000
Facility	Wrigley Pad	Wellbore	Trunk Unit 1H AWP
Slot	Slot A		

WELLPATH DATA (233 stations)

MD [ft]	Inclination [°]	Azimuth [°]	TVD [ft]	Vert Sect [ft]	North [ft]	East [ft]	Grid East [US ft]	Grid North [US ft]	Latitude	Longitude	Closure Dist [ft]	Closure Dir [°]	DLS ["/100ft]	Build Rate ["/100ft]	Turn Rate ["/100ft]	Comments
2742.00	30.550	262.370	2531.47	-243.10	-37.12	-826.06	1637503.70	14315254.45	39°25'15.9243"N	81°00'37.1330"W	826.89	267.427	0.67	-0.49	-0.89	
2836.00	30.430	261.610	2612.47	-252.74	-43.77	-873.29	1637456.49	14315247.81	39°25'15.8586"N	81°00'37.7347"W	874.39	267.131	0.43	-0.13	-0.81	
2931.00	30.940	263.840	2694.17	-263.15	-49.90	-921.37	1637408.43	14315241.68	39°25'15.7979"N	81°00'38.3474"W	922.72	266.900	1.31	0.54	2.35	
3026.00	32.060	268.450	2775.18	-276.70	-53.20	-970.87	1637358.95	14315238.38	39°25'15.7652"N	81°00'38.9781"W	972.32	266.863	2.80	1.18	4.85	
3120.00	32.050	268.770	2854.85	-292.35	-54.41	-1020.74	1637309.10	14315237.17	39°25'15.7532"N	81°00'39.6136"W	1022.19	266.949	0.18	-0.01	0.34	
3215.00	31.730	267.050	2935.51	-307.51	-56.24	-1070.89	1637258.97	14315235.34	39°25'15.7351"N	81°00'40.2526"W	1072.37	266.994	1.01	-0.34	-1.81	
3310.00	31.540	266.110	3016.40	-321.45	-59.21	-1120.63	1637209.25	14315232.37	39°25'15.7057"N	81°00'40.8864"W	1122.19	266.976	0.56	-0.20	-0.99	
3405.00	30.870	264.230	3097.65	-334.06	-63.35	-1169.67	1637160.23	14315228.24	39°25'15.6647"N	81°00'41.5113"W	1171.38	266.900	1.24	-0.71	-1.98	
3500.00	31.380	266.460	3178.98	-346.79	-67.32	-1218.60	1637111.32	14315224.26	39°25'15.6254"N	81°00'42.1348"W	1220.46	266.838	1.33	0.54	2.35	
3596.00	31.360	266.350	3260.95	-360.63	-70.46	-1268.48	1637061.46	14315221.13	39°25'15.5943"N	81°00'42.7704"W	1270.44	266.821	0.06	-0.02	-0.11	APS EM <8-3/4"> (3500')(3596'-5677')
3691.00	32.680	268.100	3341.49	-375.28	-72.88	-1318.79	1637011.17	14315218.71	39°25'15.5703"N	81°00'43.4114"W	1320.80	266.837	1.70	1.39	1.84	
3785.00	34.460	268.070	3419.81	-391.13	-74.62	-1370.73	1636959.25	14315216.97	39°25'15.5531"N	81°00'44.0733"W	1372.76	266.884	1.89	1.89	-0.03	
3880.00	34.250	264.510	3498.25	-405.87	-78.08	-1424.21	1636905.79	14315213.51	39°25'15.5188"N	81°00'44.7547"W	1426.35	266.862	2.13	-0.22	-3.75	
3974.00	33.860	266.060	3576.13	-419.45	-82.41	-1476.67	1636853.36	14315209.18	39°25'15.4759"N	81°00'45.4231"W	1478.97	266.806	1.01	-0.41	1.65	
4069.00	33.800	268.360	3655.05	-434.80	-84.99	-1529.49	1636800.56	14315206.61	39°25'15.4504"N	81°00'46.0962"W	1531.84	266.820	1.35	-0.06	2.42	
4163.00	33.120	265.390	3733.47	-449.57	-87.80	-1581.22	1636748.84	14315203.80	39°25'15.4225"N	81°00'46.7554"W	1583.66	266.822	1.89	-0.72	-3.16	
4258.00	32.260	263.940	3813.43	-462.28	-92.56	-1632.31	1636697.78	14315199.04	39°25'15.3754"N	81°00'47.4063"W	1634.93	266.754	1.22	-0.91	-1.53	
4353.00	32.940	269.540	3893.48	-476.75	-95.45	-1683.36	1636646.75	14315196.15	39°25'15.3468"N	81°00'48.0568"W	1686.06	266.755	3.25	0.72	5.89	
4447.00	33.640	270.490	3972.05	-494.13	-95.43	-1734.95	1636595.18	14315196.17	39°25'15.3469"N	81°00'48.7142"W	1737.57	266.852	0.93	0.74	1.01	
4542.00	34.690	271.800	4050.66	-513.09	-94.35	-1788.29	1636541.86	14315197.24	39°25'15.3574"N	81°00'49.3939"W	1790.77	266.980	1.35	1.11	1.38	
4636.00	33.450	267.540	4128.53	-530.55	-94.63	-1840.92	1636489.25	14315196.97	39°25'15.3546"N	81°00'50.0645"W	1843.35	267.057	2.86	-1.32	-4.53	
4731.00	32.300	266.880	4208.32	-545.53	-97.13	-1892.42	1636437.77	14315194.47	39°25'15.3298"N	81°00'50.7208"W	1894.91	267.062	1.27	-1.21	-0.69	
4825.00	32.710	269.590	4287.60	-561.06	-98.68	-1942.90	1636387.31	14315192.92	39°25'15.3144"N	81°00'51.3640"W	1945.40	267.092	1.61	0.44	2.88	
4920.00	31.220	270.910	4368.19	-578.18	-98.47	-1993.19	1636337.05	14315193.13	39°25'15.3164"N	81°00'52.0048"W	1995.62	267.172	1.73	-1.57	1.39	
5014.00	31.500	275.650	4448.47	-597.25	-95.67	-2041.99	1636288.26	14315195.93	39°25'15.3440"N	81°00'52.6266"W	2044.23	267.318	2.64	0.30	5.04	
5109.00	32.640	277.930	4528.97	-619.74	-89.69	-2092.07	1636238.21	14315201.91	39°25'15.4030"N	81°00'53.2647"W	2093.99	267.545	1.75	1.20	2.40	
5203.00	31.560	274.370	4608.61	-641.51	-84.32	-2141.71	1636188.58	14315207.28	39°25'15.4561"N	81°00'53.8973"W	2143.37	267.745	2.32	-1.15	-3.79	
5298.00	30.170	270.920	4690.16	-660.03	-82.04	-2190.37	1636139.94	14315209.55	39°25'15.4785"N	81°00'54.5174"W	2191.91	267.855	2.37	-1.46	-3.63	
5393.00	29.800	271.080	4772.45	-676.79	-81.21	-2237.84	1636092.49	14315210.38	39°25'15.4866"N	81°00'55.1223"W	2239.32	267.922	0.40	-0.39	0.17	
5487.00	32.890	276.340	4852.73	-696.27	-77.95	-2286.58	1636043.77	14315213.64	39°25'15.5187"N	81°00'55.7434"W	2287.91	268.048	4.39	3.29	5.60	

RECEIVED
Office of Oil and Gas
AUG 21 2023
WV Department of
Environmental Protection



Actual Wellpath Report

Trunk Unit 1H AWP Proj: 21338'
Page 4 of 12


REFERENCE WELLPATH IDENTIFICATION

Operator	ANTERO RESOURCES CORPORATION	Well	Trunk Unit 1H
Field	Tyler	API	47-095-02815-0000
Facility	Wrigley Pad	Wellbore	Trunk Unit 1H AWB
Slot	Slot A		

WELLPATH DATA (233 stations) † = interpolated, ‡ = extrapolated station

MD (ft)	Inclination (°)	Azimuth (°)	TVD (ft)	Vert Sect (ft)	North (ft)	East (ft)	Grid East [US ft]	Grid North [US ft]	Latitude	Longitude	Closure Dist (ft)	Closure Dir (°)	DLS (°/100ft)	Build Rate (°/100ft)	Turn Rate (°/100ft)	Comments
5582.00	34.690	276.290	4931.68	-719.41	-72.14	-2339.09	1635991.28	14315219.45	39°25'15.5761"N	81°00'56.4125"W	2340.21	268.234	1.89	1.89	-0.05	
5677.00	33.500	273.040	5010.36	-741.37	-67.79	-2392.15	1635938.24	14315223.80	39°25'15.6190"N	81°00'57.0886"W	2393.11	268.377	2.29	-1.25	-3.42	
5737.00	32.700	271.360	5080.62	-753.58	-66.52	-2424.89	1635905.51	14315225.06	39°25'15.6314"N	81°00'57.5058"W	2425.80	268.429	2.03	-1.33	-2.80	BH AT Curve (x-Short) <8-1/2"> (5677')(5737'-7784')
5800.00	33.620	270.160	5113.36	-765.61	-66.07	-2459.35	1635871.07	14315225.51	39°25'15.6358"N	81°00'57.9448"W	2460.23	268.461	1.79	1.46	-1.90	
5894.00	38.640	266.520	5189.27	-782.63	-67.78	-2514.70	1635815.74	14315223.81	39°25'15.6188"N	81°00'58.6502"W	2515.62	268.456	5.81	5.34	-3.87	
5989.00	45.750	261.670	5259.62	-797.61	-74.52	-2578.07	1635752.39	14315217.07	39°25'15.5521"N	81°00'59.4576"W	2579.15	268.344	8.23	7.48	-5.11	
6083.00	51.570	259.090	5321.69	-809.85	-86.38	-2647.60	1635682.89	14315205.22	39°25'15.4348"N	81°01'0.3436"W	2649.01	268.131	6.52	6.19	-2.74	
6178.00	54.980	259.540	5378.49	-821.75	-100.49	-2722.42	1635608.11	14315191.11	39°25'15.2952"N	81°01'1.2969"W	2724.27	267.886	3.61	3.59	0.47	
6272.00	55.810	256.250	5431.88	-831.92	-116.72	-2798.05	1635532.51	14315174.89	39°25'15.1346"N	81°01'2.2605"W	2800.48	267.611	3.01	0.88	-3.50	
6367.00	53.930	245.370	5486.66	-832.65	-142.11	-2871.27	1635459.32	14315149.50	39°25'14.8835"N	81°01'3.1934"W	2874.78	267.166	9.57	-1.98	-11.45	
6461.00	51.890	234.650	5543.45	-819.35	-179.42	-2936.09	1635394.52	14315112.22	39°25'14.5147"N	81°01'4.0193"W	2941.57	266.503	9.35	-2.17	-11.40	
6555.00	49.490	227.400	5603.04	-795.41	-225.04	-2992.61	1635338.02	14315066.61	39°25'14.0637"N	81°01'4.7394"W	3001.06	265.700	6.49	-2.55	-7.71	
6650.00	50.030	224.470	5664.42	-765.46	-275.47	-3044.70	1635285.95	14315016.20	39°25'13.5651"N	81°01'5.4031"W	3057.14	264.830	2.42	0.57	-3.08	
6744.00	50.060	214.840	5724.87	-728.77	-330.83	-3090.59	1635240.09	14314960.86	39°25'13.0179"N	81°01'5.9876"W	3108.24	263.890	7.85	0.03	-10.24	
6839.00	50.030	202.030	5786.03	-680.33	-394.62	-3125.13	1635205.56	14314897.10	39°25'12.3874"N	81°01'6.4276"W	3149.95	262.803	10.33	-0.03	-13.48	
6933.00	52.040	190.430	5845.26	-621.25	-464.61	-3145.39	1635185.30	14314827.14	39°25'11.6956"N	81°01'6.6856"W	3179.52	261.598	9.82	2.14	-12.34	
6948.00†	52.477	188.519	5854.44	-610.89	-476.31	-3147.35	1635183.35	14314815.45	39°25'11.5800"N	81°01'6.7104"W	3183.18	261.394	10.49	2.91	-12.74	Sycamore: 6948' MD
7027.00	55.260	178.850	5901.09	-552.40	-539.85	-3151.34	1635179.36	14314751.93	39°25'10.9519"N	81°01'6.7612"W	3197.25	260.279	10.49	3.52	-12.24	
7093.00	57.980	172.710	5937.42	-499.31	-594.76	-3147.24	1635183.45	14314697.04	39°25'10.4092"N	81°01'6.7088"W	3202.95	259.299	8.79	4.12	-9.30	
7100.00†	58.266	172.398	5941.12	-493.50	-600.66	-3146.47	1635184.22	14314691.14	39°25'10.3510"N	81°01'6.6990"W	3203.29	259.192	5.57	4.09	-4.46	Middlesex: 7100' MD
7122.00	59.170	171.430	5952.54	-475.08	-619.27	-3143.83	1635186.87	14314672.54	39°25'10.1670"N	81°01'6.6652"W	3204.24	258.857	5.57	4.11	-4.40	
7217.00	63.410	168.790	5998.17	-393.00	-701.32	-3129.48	1635201.20	14314590.52	39°25'9.3561"N	81°01'6.4823"W	3207.10	257.369	5.08	4.46	-2.78	
7259.00†	64.933	168.364	6016.47	-355.59	-738.37	-3122.00	1635208.69	14314553.48	39°25'8.9899"N	81°01'6.3867"W	3208.12	256.694	3.74	3.63	-1.02	Burkett: 7259' MD
7311.00	66.820	167.850	6037.72	-308.57	-784.81	-3112.21	1635218.47	14314507.07	39°25'8.5310"N	81°01'6.2620"W	3209.64	255.847	3.74	3.63	-0.99	
7313.00†	66.969	167.841	6038.51	-306.74	-786.61	-3111.83	1635218.85	14314505.27	39°25'8.5132"N	81°01'6.2570"W	3209.71	255.814	7.47	7.46	-0.46	Marcellus POE: 7313' MD
7406.00	73.910	167.430	6069.63	-219.87	-872.15	-3093.07	1635237.61	14314419.76	39°25'7.6677"N	81°01'6.0178"W	3213.68	254.253	7.47	7.46	-0.44	
7501.00	84.450	167.160	6087.43	-127.38	-963.05	-3072.57	1635258.10	14314328.90	39°25'6.7694"N	81°01'5.7564"W	3219.96	252.597	11.10	11.09	-0.28	
7595.00	90.220	159.920	6091.81	-33.73	-1053.00	-3045.98	1635284.67	14314238.98	39°25'5.8804"N	81°01'5.4173"W	3222.86	250.930	9.84	6.14	-7.70	
7690.00	89.970	159.320	6091.65	61.26	-1142.05	-3012.90	1635317.74	14314149.97	39°25'5.0004"N	81°01'4.9956"W	3222.08	249.241	0.68	-0.26	-0.63	
7784.00	89.450	159.040	6092.13	155.24	-1229.91	-2979.49	1635351.14	14314062.14	39°25'4.1321"N	81°01'4.5696"W	3223.36	247.569	0.63	-0.55	-0.30	

RECEIVED
Office of Oil and Gas
AUG 21 2023
WV Department of
Environmental Protection



Actual Wellpath Report

Trunk Unit 1H AWP Proj: 21338'
Page 5 of 12



REFERENCE WELLPATH IDENTIFICATION				
Operator	ANTERO RESOURCES CORPORATION		Well	Trunk Unit 1H
Field	Tyler		API	47-095-02815-0000
Facility	Wrigley Pad		Wellbore	Trunk Unit 1H AWB
Slot	Slot A			

WELLPATH DATA (233 stations)																
MD [ft]	Inclination [°]	Azimuth [°]	TVD [ft]	Vert Sect [ft]	North [ft]	East [ft]	Grid East [US ft]	Grid North [US ft]	Latitude	Longitude	Closure Dist [ft]	Closure Dir [°]	DLS [°/100ft]	Build Rate [°/100ft]	Turn Rate [°/100ft]	Comments
7879.00	89.660	160.550	6092.86	250.23	-1319.06	-2946.68	1635383.94	14313973.03	39°25'3.2510"N	81°01'4.1514"W	3228.44	245.885	1.60	0.22	1.59	BH AT Curve (Axial) <8-1/2"> (7784')(7879-21310')
7973.00	89.940	159.920	6093.19	344.23	-1407.52	-2914.89	1635415.71	14313884.60	39°25'2.3768"N	81°01'3.7461"W	3236.93	244.225	0.73	0.30	-0.67	
8068.00	90.000	159.850	6093.24	439.23	-1496.73	-2882.22	1635448.37	14313795.43	39°25'1.4952"N	81°01'3.3296"W	3247.67	242.557	0.10	0.06	-0.07	
8162.00	89.350	158.710	6093.78	533.21	-1584.64	-2848.96	1635481.61	14313707.55	39°25'0.6263"N	81°01'2.9057"W	3260.01	240.916	1.40	-0.69	-1.21	
8257.00	89.320	159.230	6094.88	628.17	-1673.31	-2814.87	1635515.69	14313618.92	39°24'59.7500"N	81°01'2.4711"W	3274.67	239.271	0.55	-0.03	0.55	
8351.00	89.600	159.160	6095.76	722.15	-1761.18	-2781.49	1635549.06	14313531.09	39°24'58.8817"N	81°01'2.0455"W	3292.18	237.659	0.31	0.30	-0.07	
8446.00	89.420	158.490	6096.58	817.11	-1849.76	-2747.17	1635583.36	14313442.54	39°24'58.0062"N	81°01'1.6081"W	3311.88	236.046	0.73	-0.19	-0.71	
8540.00	89.380	157.370	6097.56	911.03	-1936.86	-2711.86	1635618.66	14313355.47	39°24'57.1454"N	81°01'1.1579"W	3332.51	234.465	1.19	-0.04	-1.19	
8635.00	89.570	155.910	6098.43	1005.82	-2024.07	-2674.19	1635656.31	14313268.30	39°24'56.2836"N	81°01'0.6778"W	3353.83	232.878	1.55	0.20	-1.54	
8730.00	89.380	155.890	6099.30	1100.53	-2110.79	-2635.40	1635695.09	14313181.62	39°24'55.4266"N	81°01'0.1833"W	3376.50	231.308	0.20	-0.20	-0.02	
8824.00	89.540	159.670	6100.19	1194.42	-2197.79	-2599.86	1635730.61	14313094.66	39°24'54.5668"N	81°00'59.7303"W	3404.34	229.791	4.02	0.17	4.02	
8919.00	89.510	161.400	6100.98	1289.41	-2287.35	-2568.21	1635762.25	14313005.13	39°24'53.6816"N	81°00'59.3268"W	3439.14	228.310	1.82	-0.03	1.82	
9014.00	89.320	161.110	6101.95	1384.40	-2377.31	-2537.68	1635792.77	14312915.21	39°24'52.7926"N	81°00'58.9376"W	3477.27	226.869	0.36	-0.20	-0.31	
9108.00	89.630	160.650	6102.81	1478.39	-2466.12	-2506.89	1635823.55	14312826.43	39°24'51.9149"N	81°00'58.5451"W	3516.57	225.470	0.59	0.33	-0.49	
9203.00	89.230	161.320	6103.75	1573.37	-2555.93	-2475.94	1635854.48	14312736.66	39°24'51.0273"N	81°00'58.1506"W	3558.52	224.089	0.82	-0.42	0.71	
9297.00	89.290	161.360	6104.97	1667.35	-2644.98	-2445.87	1635884.54	14312647.64	39°24'50.1472"N	81°00'57.7672"W	3602.53	222.760	0.08	0.06	0.04	
9392.00	91.910	161.390	6103.97	1762.32	-2734.99	-2415.53	1635914.87	14312557.67	39°24'49.2576"N	81°00'57.3805"W	3648.97	221.451	2.76	2.76	0.03	
9486.00	89.890	161.390	6102.66	1856.29	-2824.06	-2385.54	1635944.85	14312468.63	39°24'48.3774"N	81°00'56.9982"W	3696.77	220.188	2.36	-2.36	0.00	
9581.00	89.510	160.970	6103.32	1951.28	-2913.98	-2354.89	1635975.48	14312378.75	39°24'47.4887"N	81°00'56.6075"W	3746.57	218.943	0.48	-0.19	-0.44	
9675.00	89.480	160.690	6104.15	2045.27	-3002.77	-2324.03	1636006.34	14312290.00	39°24'46.6113"N	81°00'56.2140"W	3797.07	217.739	0.30	-0.03	-0.30	
9770.00	89.450	159.710	6105.04	2140.27	-3092.14	-2291.85	1636038.50	14312200.66	39°24'45.7279"N	81°00'55.8039"W	3848.89	216.545	1.03	-0.03	-1.03	
9864.00	89.380	159.610	6106.00	2234.25	-3180.28	-2259.18	1636071.16	14312112.56	39°24'44.8569"N	81°00'55.3874"W	3901.03	215.389	0.13	-0.07	-0.11	
9959.00	89.540	160.920	6106.89	2329.25	-3269.69	-2227.10	1636103.22	14312023.18	39°24'43.9732"N	81°00'54.9785"W	3956.12	214.260	1.39	0.17	1.38	
10054.00	89.450	160.100	6107.73	2424.24	-3359.24	-2195.41	1636134.91	14311933.67	39°24'43.0882"N	81°00'54.5745"W	4013.02	213.166	0.87	-0.09	-0.86	
10148.00	89.690	160.010	6108.44	2518.24	-3447.60	-2163.34	1636166.96	14311845.34	39°24'42.2150"N	81°00'54.1658"W	4070.14	212.108	0.27	0.26	-0.10	
10243.00	89.540	160.450	6109.07	2613.24	-3537.00	-2131.21	1636199.08	14311755.98	39°24'41.3314"N	81°00'53.7563"W	4129.46	211.071	0.49	-0.16	0.46	
10338.00	89.420	159.300	6109.94	2708.23	-3626.20	-2098.53	1636231.75	14311666.82	39°24'40.4499"N	81°00'53.3396"W	4189.64	210.059	1.22	-0.13	-1.21	
10432.00	89.690	159.520	6110.67	2802.21	-3714.19	-2065.47	1636264.79	14311578.86	39°24'39.5803"N	81°00'52.9183"W	4249.87	209.079	0.37	0.29	0.23	
10527.00	89.600	160.400	6111.25	2897.21	-3803.43	-2032.92	1636297.33	14311489.65	39°24'38.6983"N	81°00'52.5034"W	4312.64	208.124	0.93	-0.09	0.93	
10622.00	90.060	160.850	6111.54	2992.21	-3893.05	-2001.40	1636328.83	14311400.07	39°24'37.8126"N	81°00'52.1017"W	4377.38	207.207	0.68	0.48	0.47	

RECEIVED
 Office of Oil and Gas
 AUG 21 2023
 WY Department of
 Environmental Protection



Actual Wellpath Report

Trunk Unit 1H AWP Proj: 21338'
Page 6 of 12



REFERENCE WELLPATH IDENTIFICATION			
Operator	ANTERO RESOURCES CORPORATION	Well	Trunk Unit 1H
Field	Tyler	API	47-095-02815-0000
Facility	Wrigley Pad	Wellbore	Trunk Unit 1H AWP
Slot	Slot A		

WELLPATH DATA (233 stations)																
MD [ft]	Inclination [°]	Azimuth [°]	TVD [ft]	Vert Sect [ft]	North [ft]	East [ft]	Grid East [US ft]	Grid North [US ft]	Latitude	Longitude	Closure Dist [ft]	Closure Dir [°]	DLS ["/100ft]	Build Rate ["/100ft]	Turn Rate ["/100ft]	Comments
10716.00	89.350	160.000	6112.02	3086.20	-3981.62	-1969.91	1636360.32	14311311.54	39°24'36.9373"N	81°00'51.7002"W	4442.28	206.324	1.18	-0.76	-0.90	
10811.00	89.720	161.110	6112.79	3181.20	-4071.20	-1938.28	1636391.93	14311222.00	39°24'36.0520"N	81°00'51.2972"W	4509.05	205.459	1.23	0.39	1.17	
10906.00	89.720	160.670	6113.26	3276.19	-4160.98	-1907.18	1636423.01	14311132.27	39°24'35.1649"N	81°00'50.9007"W	4577.22	204.624	0.46	0.00	-0.46	
11000.00	89.510	160.710	6113.89	3370.19	-4249.67	-1876.10	1636454.09	14311043.60	39°24'34.2882"N	81°00'50.5046"W	4645.37	203.820	0.23	-0.22	0.04	
11095.00	89.510	160.790	6114.70	3465.18	-4339.35	-1844.78	1636485.39	14310953.95	39°24'33.4018"N	81°00'50.1054"W	4715.21	203.032	0.08	0.00	0.08	
11189.00	89.720	161.000	6115.33	3559.18	-4428.17	-1814.01	1636516.15	14310865.17	39°24'32.5240"N	81°00'49.7132"W	4785.33	202.277	0.32	0.22	0.22	
11284.00	89.200	161.060	6116.23	3654.16	-4518.01	-1783.13	1636547.01	14310775.37	39°24'31.6362"N	81°00'49.3196"W	4857.16	201.538	0.55	-0.55	0.06	
11379.00	89.290	161.090	6117.48	3749.15	-4607.87	-1752.32	1636577.81	14310685.55	39°24'30.7481"N	81°00'48.9270"W	4929.82	200.821	0.10	0.09	0.03	
11473.00	89.290	161.100	6118.64	3843.13	-4696.79	-1721.87	1636608.25	14310596.66	39°24'29.8693"N	81°00'48.5388"W	5002.47	200.133	0.01	0.00	0.01	
11567.00	89.780	161.080	6119.41	3937.12	-4785.71	-1691.41	1636638.70	14310507.77	39°24'28.9905"N	81°00'48.1506"W	5075.82	199.465	0.52	0.52	-0.02	
11662.00	90.060	161.650	6119.54	4032.10	-4875.73	-1661.05	1636669.05	14310417.79	39°24'28.1008"N	81°00'47.7636"W	5150.91	198.813	0.67	0.29	0.60	
11756.00	89.290	161.150	6120.07	4126.09	-4964.82	-1631.07	1636699.01	14310328.74	39°24'27.2203"N	81°00'47.3815"W	5225.88	198.187	0.98	-0.82	-0.53	
11851.00	89.570	160.890	6121.02	4221.07	-5054.65	-1600.17	1636729.90	14310238.94	39°24'26.3326"N	81°00'46.9877"W	5301.89	197.566	0.40	0.29	-0.27	
11945.00	89.910	160.710	6121.44	4315.07	-5143.42	-1569.26	1636760.80	14310150.21	39°24'25.4552"N	81°00'46.5938"W	5377.49	196.967	0.41	0.36	-0.19	
12040.00	89.850	161.440	6121.64	4410.06	-5233.28	-1538.45	1636791.60	14310060.38	39°24'24.5671"N	81°00'46.2011"W	5454.73	196.382	0.77	-0.06	0.77	
12134.00	90.520	161.360	6121.34	4504.04	-5322.37	-1508.47	1636821.57	14309971.33	39°24'23.6866"N	81°00'45.8189"W	5532.01	195.824	0.72	0.71	-0.09	
12228.00	89.660	161.100	6121.19	4598.03	-5411.37	-1478.22	1636851.80	14309882.36	39°24'22.8070"N	81°00'45.4335"W	5609.64	195.279	0.96	-0.91	-0.28	
12323.00	89.660	160.730	6121.76	4693.02	-5501.15	-1447.16	1636882.85	14309792.62	39°24'21.9198"N	81°00'45.0376"W	5688.32	194.739	0.39	0.00	-0.39	
12417.00	89.170	161.050	6122.72	4787.01	-5589.96	-1416.39	1636913.61	14309703.84	39°24'21.0420"N	81°00'44.6454"W	5766.62	194.218	0.62	-0.52	0.34	
12512.00	89.880	160.880	6123.50	4882.00	-5679.77	-1385.41	1636944.58	14309614.08	39°24'20.1545"N	81°00'44.2505"W	5846.29	193.708	0.77	0.75	-0.18	
12606.00	89.910	160.620	6123.68	4976.00	-5768.51	-1354.42	1636975.56	14309525.37	39°24'19.2774"N	81°00'43.8556"W	5925.38	193.213	0.28	0.03	-0.28	
12701.00	89.480	161.050	6124.18	5071.00	-5858.24	-1323.23	1637006.73	14309435.67	39°24'18.3906"N	81°00'43.4581"W	6005.83	192.728	0.64	-0.45	0.45	
12796.00	90.650	161.700	6124.07	5165.98	-5948.27	-1292.89	1637037.06	14309345.68	39°24'17.5009"N	81°00'43.0715"W	6087.15	192.263	1.41	1.23	0.68	
12890.00	89.350	161.240	6124.07	5259.96	-6037.39	-1263.02	1637066.92	14309256.60	39°24'16.6201"N	81°00'42.6908"W	6168.09	191.816	1.47	-1.38	-0.49	
12985.00	89.230	161.020	6125.25	5354.94	-6127.28	-1232.29	1637097.63	14309166.74	39°24'15.7317"N	81°00'42.2992"W	6249.97	191.371	0.26	-0.13	-0.23	
13080.00	89.320	161.060	6126.45	5449.93	-6217.12	-1201.43	1637128.48	14309076.94	39°24'14.8438"N	81°00'41.9059"W	6332.14	190.937	0.10	0.09	0.04	
13174.00	89.110	160.520	6127.74	5543.91	-6305.87	-1170.50	1637159.40	14308988.22	39°24'13.9666"N	81°00'41.5118"W	6413.59	190.516	0.62	-0.22	-0.57	
13269.00	89.420	161.070	6128.96	5638.90	-6395.58	-1139.26	1637190.63	14308898.55	39°24'13.0801"N	81°00'41.1136"W	6496.26	190.100	0.66	0.33	0.58	
13363.00	89.780	161.460	6129.62	5732.89	-6484.60	-1109.07	1637220.81	14308809.57	39°24'12.2003"N	81°00'40.7288"W	6578.75	189.705	0.56	0.38	0.41	
13458.00	89.290	161.250	6130.39	5827.87	-6574.61	-1078.69	1637251.17	14308719.60	39°24'11.3107"N	81°00'40.3418"W	6662.51	189.317	0.56	-0.52	-0.22	

RECEIVED
 Office of Oil and Gas
 AUG 21 2023
 WV Department of
 Environmental Protection



Actual Wellpath Report

Trunk Unit 1H AWP Proj: 21338'
Page 7 of 12



REFERENCE WELLPATH IDENTIFICATION			
Operator	ANTERO RESOURCES CORPORATION	Well	Trunk Unit 1H
Field	Tyler	API	47-095-02815-0000
Facility	Wrigley Pad	Wellbore	Trunk Unit 1H AWP
Slot	Slot A		

WELLPATH DATA (233 stations)																
MD [ft]	Inclination [°]	Azimuth [°]	TVD [ft]	Vert Sect [ft]	North [ft]	East [ft]	Grid East [US ft]	Grid North [US ft]	Latitude	Longitude	Closure Dist [ft]	Closure Dir [°]	DLS ["/100ft]	Build Rate ["/100ft]	Turn Rate ["/100ft]	Comments
13553.00	89.420	160.880	6131.46	5922.85	-6664.46	-1047.87	1637281.98	14308629.78	39°24'10.4227"N	81°00'39.9489"W	6746.34	188.936	0.41	0.14	-0.39	
13648.00	89.510	161.180	6132.34	6017.84	-6754.30	-1016.99	1637312.85	14308539.98	39°24'9.5348"N	81°00'39.5554"W	6830.43	188.563	0.33	0.09	0.32	
13742.00	88.980	161.030	6133.58	6111.83	-6843.22	-986.55	1637343.28	14308451.09	39°24'8.6559"N	81°00'39.1675"W	6913.97	188.204	0.59	-0.56	-0.16	
13837.00	89.600	161.500	6134.76	6206.80	-6933.18	-956.04	1637373.77	14308361.16	39°24'7.7669"N	81°00'38.7787"W	6998.79	187.851	0.82	0.65	0.49	
13931.00	89.450	160.870	6135.54	6300.79	-7022.16	-925.73	1637404.08	14308272.23	39°24'6.8875"N	81°00'38.3924"W	7082.91	187.510	0.69	-0.16	-0.67	
14026.00	89.750	161.030	6136.20	6395.78	-7111.95	-894.72	1637435.07	14308182.47	39°24'6.0001"N	81°00'37.9973"W	7168.01	187.170	0.36	0.32	0.17	
14120.00	89.200	160.930	6137.06	6489.77	-7200.81	-864.09	1637465.69	14308093.64	39°24'5.1218"N	81°00'37.6069"W	7252.47	186.843	0.59	-0.59	-0.11	
14215.00	89.510	161.030	6138.13	6584.76	-7290.62	-833.13	1637496.64	14308003.87	39°24'4.2342"N	81°00'37.2124"W	7338.07	186.519	0.34	0.33	0.11	
14310.00	89.600	161.180	6138.87	6679.75	-7380.50	-802.36	1637527.39	14307914.03	39°24'3.3460"N	81°00'36.8204"W	7423.99	186.204	0.18	0.09	0.16	
14405.00	89.420	161.000	6139.68	6774.74	-7470.37	-771.58	1637558.16	14307824.19	39°24'2.4578"N	81°00'36.4281"W	7510.11	185.897	0.27	-0.19	-0.19	
14499.00	89.420	160.050	6140.63	6868.73	-7558.99	-740.24	1637589.49	14307735.61	39°24'1.5820"N	81°00'36.0288"W	7595.15	185.593	1.01	0.00	-1.01	
14594.00	89.970	160.750	6141.14	6963.73	-7648.48	-708.37	1637621.34	14307646.15	39°24'0.6975"N	81°00'35.6227"W	7681.21	185.291	0.94	0.58	0.74	
14688.00	89.200	159.860	6141.82	7057.72	-7736.98	-676.70	1637653.01	14307557.69	39°23'59.8229"N	81°00'35.2191"W	7766.51	184.999	1.25	-0.82	-0.95	
14783.00	89.600	159.960	6142.81	7152.72	-7826.19	-644.07	1637685.62	14307468.51	39°23'58.9411"N	81°00'34.8033"W	7852.65	184.705	0.43	0.42	0.11	
14878.00	89.510	160.320	6143.55	7247.71	-7915.54	-611.79	1637717.88	14307379.20	39°23'58.0581"N	81°00'34.3921"W	7939.15	184.420	0.39	-0.09	0.38	
14972.00	89.510	159.830	6144.36	7341.71	-8003.91	-579.76	1637749.90	14307290.87	39°23'57.1847"N	81°00'33.9839"W	8024.88	184.143	0.52	0.00	-0.52	
15067.00	90.030	160.280	6144.74	7436.70	-8093.21	-547.35	1637782.30	14307201.60	39°23'56.3022"N	81°00'33.5710"W	8111.70	183.869	0.72	0.55	0.47	
15162.00	89.690	160.270	6144.97	7531.70	-8182.63	-515.29	1637814.35	14307112.22	39°23'55.4184"N	81°00'33.1624"W	8198.84	183.603	0.36	-0.36	-0.01	
15257.00	89.350	159.860	6145.77	7626.70	-8271.94	-482.90	1637846.72	14307022.95	39°23'54.5358"N	81°00'32.7497"W	8286.02	183.341	0.56	-0.36	-0.43	
15351.00	89.720	160.140	6146.53	7720.69	-8360.27	-450.75	1637878.86	14306934.65	39°23'53.6628"N	81°00'32.3401"W	8372.41	183.086	0.49	0.39	0.30	
15445.00	89.420	159.530	6147.23	7814.69	-8448.50	-418.35	1637911.25	14306846.45	39°23'52.7907"N	81°00'31.9272"W	8458.85	182.835	0.72	-0.32	-0.65	
15540.00	89.820	160.350	6147.88	7909.68	-8537.74	-385.77	1637943.82	14306757.26	39°23'51.9088"N	81°00'31.5121"W	8546.45	182.587	0.96	0.42	0.86	
15634.00	89.630	160.230	6148.32	8003.68	-8626.23	-354.06	1637975.51	14306668.80	39°23'51.0343"N	81°00'31.1081"W	8633.49	182.350	0.24	-0.20	-0.13	
15729.00	89.020	158.810	6149.43	8098.66	-8715.21	-320.83	1638008.73	14306579.85	39°23'50.1548"N	81°00'30.6847"W	8721.12	182.108	1.63	-0.64	-1.49	
15823.00	90.620	160.430	6149.73	8192.65	-8803.32	-288.10	1638041.45	14306491.78	39°23'49.2840"N	81°00'30.2676"W	8808.04	181.874	2.42	1.70	1.72	
15918.00	89.720	160.150	6149.45	8287.65	-8892.76	-256.06	1638073.48	14306402.38	39°23'48.4001"N	81°00'29.8594"W	8896.44	181.649	0.99	-0.95	-0.29	
16012.00	89.570	160.230	6150.03	8381.64	-8981.19	-224.20	1638105.32	14306313.98	39°23'47.5261"N	81°00'29.4535"W	8983.99	181.430	0.18	-0.16	0.09	
16107.00	89.820	160.440	6150.54	8476.64	-9070.65	-192.23	1638137.28	14306224.56	39°23'46.6419"N	81°00'29.0462"W	9072.69	181.214	0.34	0.26	0.22	
16201.00	89.320	159.660	6151.24	8570.64	-9159.00	-160.16	1638169.33	14306136.24	39°23'45.7687"N	81°00'28.6376"W	9160.41	181.002	0.99	-0.53	-0.83	
16296.00	89.780	160.380	6151.99	8665.63	-9248.28	-127.70	1638201.78	14306046.99	39°23'44.8863"N	81°00'28.2240"W	9249.17	180.791	0.90	0.48	0.76	

RECEIVED
 Office of Oil and Gas
 AUG 21 2023
 WV Department of
 Environmental Protection



Actual Wellpath Report

Trunk Unit 1H AWP Proj: 21338'
Page 8 of 12



REFERENCE WELLPATH IDENTIFICATION

Operator	ANTERO RESOURCES CORPORATION	Well	Trunk Unit 1H
Field	Tyler	API	47-095-02815-0000
Facility	Wrigley Pad	Wellbore	Trunk Unit 1H AWB
Slot	Slot A		

WELLPATH DATA (233 stations)

MD [ft]	Inclination [°]	Azimuth [°]	TVD [ft]	Vert Sect [ft]	North [ft]	East [ft]	Grid East [US ft]	Grid North [US ft]	Latitude	Longitude	Closure Dist [ft]	Closure Dir [°]	DLS [°/100ft]	Build Rate [°/100ft]	Turn Rate [°/100ft]	Comments
16391.00	89.850	160.020	6152.29	8760.63	-9337.67	-95.52	1638233.95	14305957.65	39°23'44.0029"N	81°00'27.8140"W	9338.16	180.586	0.39	0.07	-0.38	
16485.00	89.690	159.940	6152.67	8854.63	-9425.99	-63.34	1638266.12	14305869.36	39°23'43.1301"N	81°00'27.4040"W	9426.20	180.385	0.19	-0.17	-0.09	
16580.00	90.000	159.930	6152.93	8949.63	-9515.22	-30.75	1638298.70	14305780.17	39°23'42.2481"N	81°00'26.9888"W	9515.27	180.185	0.33	0.33	-0.01	
16769.00	89.450	160.320	6153.84	9138.62	-9692.96	33.51	1638362.92	14305602.50	39°23'40.4915"N	81°00'26.1701"W	9693.02	179.802	0.36	-0.29	0.21	
16864.00	89.910	159.630	6154.37	9233.62	-9782.21	66.04	1638395.44	14305513.28	39°23'39.6094"N	81°00'25.7557"W	9782.44	179.613	0.87	0.48	-0.73	
16958.00	89.880	160.630	6154.54	9327.62	-9870.62	97.99	1638427.38	14305424.91	39°23'38.7357"N	81°00'25.3487"W	9871.10	179.431	1.06	-0.03	1.06	
17053.00	89.350	160.020	6155.18	9422.61	-9960.07	129.97	1638459.35	14305335.50	39°23'37.8516"N	81°00'24.9412"W	9960.91	179.252	0.85	-0.56	-0.64	
17148.00	89.780	159.650	6155.90	9517.61	-10049.24	162.72	1638492.08	14305246.36	39°23'36.9703"N	81°00'24.5240"W	10050.56	179.072	0.60	0.45	-0.39	
17243.00	89.660	160.230	6156.36	9612.60	-10138.48	195.30	1638524.65	14305157.16	39°23'36.0883"N	81°00'24.1088"W	10140.36	178.896	0.62	-0.13	0.61	
17337.00	89.320	159.950	6157.20	9706.60	-10226.85	227.31	1638556.65	14305068.82	39°23'35.2149"N	81°00'23.7010"W	10229.38	178.727	0.47	-0.36	-0.30	
17432.00	89.780	159.790	6157.95	9801.59	-10316.05	260.00	1638589.33	14304979.66	39°23'34.3334"N	81°00'23.2845"W	10319.32	178.556	0.51	0.48	-0.17	
17527.00	89.970	159.840	6158.15	9896.59	-10405.21	292.78	1638622.10	14304890.53	39°23'33.4521"N	81°00'22.8669"W	10409.33	178.388	0.21	0.20	0.05	
17621.00	89.380	159.860	6158.69	9990.58	-10493.46	325.16	1638654.46	14304802.32	39°23'32.5800"N	81°00'22.4544"W	10498.49	178.225	0.63	-0.63	0.02	
17716.00	89.570	160.270	6159.56	10085.58	-10582.76	357.55	1638686.84	14304713.05	39°23'31.6973"N	81°00'22.0418"W	10588.80	178.065	0.48	0.20	0.43	
17811.00	89.450	159.950	6160.37	10180.57	-10672.09	389.87	1638719.15	14304623.76	39°23'30.8145"N	81°00'21.6301"W	10679.21	177.908	0.36	-0.13	-0.34	
17905.00	89.630	160.160	6161.12	10274.57	-10760.45	421.94	1638751.20	14304535.44	39°23'29.9412"N	81°00'21.2216"W	10768.72	177.754	0.29	0.19	0.22	
17999.00	89.320	159.680	6161.99	10368.56	-10848.73	454.21	1638783.46	14304447.19	39°23'29.0687"N	81°00'20.8105"W	10858.24	177.603	0.61	-0.33	-0.51	
18094.00	89.690	159.840	6162.81	10463.55	-10937.86	487.07	1638816.31	14304358.09	39°23'28.1878"N	81°00'20.3918"W	10948.70	177.450	0.42	0.39	0.17	
18188.00	89.420	159.920	6163.54	10557.55	-11026.12	519.41	1638848.63	14304269.87	39°23'27.3155"N	81°00'19.9799"W	11038.35	177.303	0.30	-0.29	0.09	
18283.00	88.980	159.500	6164.86	10652.53	-11115.22	552.35	1638881.56	14304180.81	39°23'26.4349"N	81°00'19.5603"W	11128.93	177.155	0.64	-0.46	-0.44	
18378.00	89.420	160.060	6166.19	10747.52	-11204.35	585.18	1638914.37	14304091.71	39°23'25.5539"N	81°00'19.1421"W	11219.63	177.010	0.75	0.46	0.59	
18472.00	89.380	159.990	6167.17	10841.51	-11292.70	617.29	1638946.47	14304003.40	39°23'24.6808"N	81°00'18.7330"W	11309.55	176.871	0.09	-0.04	-0.07	
18567.00	89.200	160.350	6168.35	10936.50	-11382.06	649.51	1638978.68	14303914.08	39°23'23.7977"N	81°00'18.3225"W	11400.57	176.734	0.42	-0.19	0.38	
18661.00	90.400	160.260	6168.68	11030.50	-11470.55	681.19	1639010.35	14303825.62	39°23'22.9230"N	81°00'17.9190"W	11490.76	176.601	1.28	1.28	-0.10	
18756.00	89.630	160.640	6168.65	11125.50	-11560.08	712.98	1639042.12	14303736.13	39°23'22.0382"N	81°00'17.5140"W	11582.04	176.471	0.90	-0.81	0.40	
18850.00	89.320	160.450	6169.51	11219.50	-11648.71	744.29	1639073.42	14303647.54	39°23'21.1623"N	81°00'17.1152"W	11672.46	176.344	0.39	-0.33	-0.20	
18945.00	89.540	159.640	6170.46	11314.49	-11738.00	776.71	1639105.82	14303558.28	39°23'20.2798"N	81°00'16.7023"W	11763.67	176.214	0.88	0.23	-0.85	
19039.00	89.450	159.700	6171.29	11408.48	-11826.14	809.36	1639138.47	14303470.18	39°23'19.4086"N	81°00'16.2863"W	11853.80	176.085	0.12	-0.10	0.06	
19134.00	89.750	159.920	6171.95	11503.47	-11915.30	842.15	1639171.24	14303381.05	39°23'18.5274"N	81°00'15.8686"W	11945.02	175.957	0.39	0.32	0.23	
19228.00	89.380	160.190	6172.67	11597.47	-12003.66	874.21	1639203.29	14303292.73	39°23'17.6541"N	81°00'15.4602"W	12035.45	175.835	0.49	-0.39	0.29	

RECEIVED
 Office of Oil and Gas
 AUG 21 2023
 WV Department of
 Environmental Protection



Actual Wellpath Report

Trunk Unit 1H AWP Proj: 21338'

Page 9 of 12



REFERENCE WELLPATH IDENTIFICATION

Operator	ANTERO RESOURCES CORPORATION	Well	Trunk Unit 1H
Field	Tyler	API	47-095-02815-0000
Facility	Wrigley Pad	Wellbore	Trunk Unit 1H AWB
Slot	Slot A		

WELLPATH DATA (233 stations) † = interpolated, ‡ = extrapolated station

MD (ft)	Inclination (°)	Azimuth (°)	TVD (ft)	Vert Sect (ft)	North (ft)	East (ft)	Grid East (US ft)	Grid North (US ft)	Latitude	Longitude	Closure Dist (ft)	Closure Dir (°)	DLS (°/100ft)	Build Rate (°/100ft)	Turn Rate (°/100ft)	Comments
19323.00	90.060	161.210	6173.13	11692.46	-12093.32	905.61	1639234.68	14303203.11	39°23'16.7680"N	81°00'15.0602"W	12127.18	175.717	1.29	0.72	1.07	
19418.00	89.540	159.650	6173.46	11787.46	-12182.82	937.43	1639266.49	14303113.63	39°23'15.8834"N	81°00'14.6549"W	12218.84	175.600	1.73	-0.55	-1.64	
19512.00	89.720	160.210	6174.07	11881.46	-12271.11	969.69	1639298.73	14303025.38	39°23'15.0108"N	81°00'14.2440"W	12309.37	175.482	0.63	0.19	0.60	
19607.00	89.570	159.940	6174.66	11976.45	-12360.42	1002.06	1639331.09	14302936.10	39°23'14.1281"N	81°00'13.8317"W	12400.98	175.365	0.33	-0.16	-0.28	
19702.00	89.820	160.590	6175.16	12071.45	-12449.84	1034.14	1639363.16	14302846.72	39°23'13.2443"N	81°00'13.4231"W	12492.72	175.252	0.73	0.26	0.68	
19796.00	89.660	159.870	6175.59	12165.45	-12538.30	1065.94	1639394.94	14302758.30	39°23'12.3700"N	81°00'13.0181"W	12583.53	175.141	0.78	-0.17	-0.77	
19891.00	90.060	160.950	6175.82	12260.45	-12627.80	1097.79	1639426.78	14302668.84	39°23'11.4855"N	81°00'12.6124"W	12675.43	175.032	1.21	0.42	1.14	
19986.00	89.450	160.100	6176.23	12355.44	-12717.36	1129.46	1639458.44	14302579.31	39°23'10.6003"N	81°00'12.2090"W	12767.42	174.925	1.10	-0.64	-0.89	
20080.00	89.750	160.640	6176.88	12449.44	-12805.90	1161.04	1639490.00	14302490.81	39°23'9.7253"N	81°00'11.8067"W	12858.42	174.819	0.66	0.32	0.57	
20175.00	89.540	160.130	6177.47	12544.44	-12895.38	1192.93	1639521.88	14302401.36	39°23'8.8409"N	81°00'11.4005"W	12950.44	174.715	0.58	-0.22	-0.54	
20270.00	90.120	159.340	6177.75	12639.43	-12984.50	1225.83	1639554.77	14302312.28	39°23'7.9601"N	81°00'10.9814"W	13042.24	174.607	1.03	0.61	-0.83	
20364.00	89.940	160.200	6177.70	12733.43	-13072.70	1258.34	1639587.26	14302224.11	39°23'7.0883"N	81°00'10.5674"W	13133.12	174.502	0.93	-0.19	0.91	
20459.00	89.880	160.400	6177.85	12828.43	-13162.14	1290.36	1639619.27	14302134.71	39°23'6.2044"N	81°00'10.1596"W	13225.24	174.401	0.22	-0.06	0.21	
20554.00	89.850	160.220	6178.08	12923.43	-13251.59	1322.37	1639651.27	14302045.30	39°23'5.3203"N	81°00'9.7519"W	13317.40	174.301	0.19	-0.03	-0.19	
20649.00	89.750	160.030	6178.41	13018.43	-13340.93	1354.67	1639683.55	14301956.00	39°23'4.4373"N	81°00'9.3405"W	13409.53	174.202	0.23	-0.11	-0.20	
20743.00	89.970	159.920	6178.64	13112.42	-13429.24	1386.85	1639715.73	14301867.72	39°23'3.5645"N	81°00'8.9305"W	13500.66	174.104	0.26	0.23	-0.12	
20838.00	89.880	158.990	6178.76	13207.41	-13518.20	1420.19	1639749.05	14301778.79	39°23'2.6853"N	81°00'8.5059"W	13592.60	174.003	0.98	-0.09	-0.98	
20932.00	89.570	160.410	6179.21	13301.40	-13606.36	1452.80	1639781.65	14301690.67	39°23'1.8140"N	81°00'8.0906"W	13683.70	173.905	1.55	-0.33	1.51	
21027.00	89.630	160.190	6179.88	13396.40	-13695.80	1484.83	1639813.66	14301601.27	39°23'0.9300"N	81°00'7.6827"W	13776.05	173.812	0.24	0.06	-0.23	
21121.00	89.720	160.040	6180.41	13490.40	-13784.19	1516.80	1639845.62	14301512.91	39°23'0.0564"N	81°00'7.2755"W	13867.39	173.720	0.19	0.10	-0.16	
21216.00	89.630	160.130	6180.95	13585.39	-13873.51	1549.16	1639877.96	14301423.63	39°22'59.1736"N	81°00'6.8634"W	13959.73	173.629	0.13	-0.09	0.09	
21310.00	89.720	160.330	6181.48	13679.39	-13961.96	1580.95	1639909.75	14301335.21	39°22'58.2993"N	81°00'6.4584"W	14051.19	173.540	0.23	0.10	0.21	
21338.00‡	89.720	160.330	6181.62	13707.39	-13988.33	1590.38	1639919.17	14301308.85	39°22'58.0387"N	81°00'6.3384"W	14078.45	173.514	0.00	0.00	0.00	Projected MD at TD: 21338'

RECEIVED
 Office of Oil and Gas
 WV Department of
 Environmental Protection
 AUG 21 2023



Actual Wellpath Report

Trunk Unit 1H AWP Proj: 21338'
Page 10 of 12



REFERENCE WELLPATH IDENTIFICATION			
Operator	ANTERO RESOURCES CORPORATION	Well	Trunk Unit 1H
Field	Tyler	API	47-095-02815-0000
Facility	Wrigley Pad	Wellbore	Trunk Unit 1H AWB
Slot	Slot A		

HOLE & CASING SECTIONS - Ref Wellbore: Trunk Unit 1H AWB Ref Wellpath: Trunk Unit 1H AWP Proj: 21338'									
String/Diameter	Start MD [ft]	End MD [ft]	Interval [ft]	Start TVD [ft]	End TVD [ft]	Start N/S [ft]	Start E/W [ft]	End N/S [ft]	End E/W [ft]
20in Conductor	30.00	130.00	100.00	30.00	130.00	0.00	0.00	-0.04	0.13
17.5in Open Hole	130.00	629.00	499.00	130.00	628.99	-0.04	0.13	0.75	3.07
13.375in Casing Surface	30.00	609.00	579.00	30.00	608.99	0.00	0.00	0.67	3.10
12.25in Open Hole	629.00	3573.00	2944.00	628.99	3241.31	0.75	3.07	-69.70	-1256.53
9.625in Casing Intermediate	30.00	3547.00	3517.00	30.00	3219.11	0.00	0.00	-68.85	-1243.03
8.75in Open Hole	3573.00	5754.00	2181.00	3241.31	5074.91	-69.70	-1256.53	-66.33	-2434.10
8.5in Open Hole	5754.00	21338.00	15584.00	5074.91	6181.62	-66.33	-2434.10	-13988.33	1590.38
5.5in Casing Production	30.00	21318.00	21288.00	30.00	6181.52	0.00	0.00	-13969.50	1583.64

RECEIVED
 Office of Oil and Gas
 WV Department of
 Environmental Protection
 AUG 21 2023



Actual Wellpath Report

Trunk Unit 1H AWP Proj: 21338'
Page 11 of 12


REFERENCE WELLPATH IDENTIFICATION

Operator	ANTERO RESOURCES CORPORATION	Well	Trunk Unit 1H
Field	Tyler	API	47-095-02815-0000
Facility	Wrigley Pad	Wellbore	Trunk Unit 1H AWB
Slot	Slot A		

TARGETS

Name	TVD [ft]	North [ft]	East [ft]	Grid East [US ft]	Grid North [US ft]	Latitude	Longitude	Shape
Trunk Unit 1H POE Rev-3	6047.00	-801.75	-3126.70	1635203.99	14314490.13	39°25'8.3635"N	81°01'6.4465"W	point
Trunk Unit 1H LP Rev-3	6096.00	-1043.42	-3040.33	1635290.32	14314248.56	39°25'5.9752"N	81°01'5.3454"W	point
Trunk Unit 1H BHL Rev-4	6168.05	-14000.64	1590.25	1639919.04	14301296.55	39°22'57.9171"N	81°00'6.3401"W	point
Trunk Unit 1H BHL Rev-3	6168.42	-14067.30	1614.07	1639942.85	14301229.91	39°22'57.2582"N	81°00'6.0366"W	point
Trunk Unit 1H 50' L/R Hard Line Rev-2	6250.00	-7401.20	-768.23	1637561.51	14307893.34	39°24'3.1415"N	81°00'36.3855"W	rectangle
2D Rectangle 14016.4 x 100.								

WELLPATH COMPOSITION - Ref Wellbore: Trunk Unit 1H AWB Ref Wellpath: Trunk Unit 1H AWP Proj: 21338'

Start MD [ft]	End MD [ft]	Positional Uncertainty Model	Log Name/Comment	Wellbore	Survey Date
30.00	550.00	Gyrodata 2015 - GC+WIR+DPIPE	01 Gyrodata MS Gyro <17-1/2"> (100'-550')	Trunk Unit 1H AWB	1/5/2023
550.00	3500.00	BH NaviTrak (2019) (Axial Corr+HRGM)	02 APS EM <12-1/4"> (550')(678'-3500')	Trunk Unit 1H AWB	1/5/2023
3500.00	5677.00	BH NaviTrak (2019) (Axial Corr+HRGM)	03 APS EM <8-3/4"> (3500')(3596'-5677')	Trunk Unit 1H AWB	3/10/2023
5677.00	7784.00	BH AutoTrak Curve/eXpress (2019) (HRGM, X Short spacing)	04 BH AT Curve (x-Short) <8-1/2"> (5677')(5737'-7784')	Trunk Unit 1H AWB	3/10/2023
7784.00	21338.00	BH AutoTrak Curve/eXpress (2019) (Axial Corr+HRGM)	05 BH AT Curve (Axial) <8-1/2"> (7784')(7879'-21310')	Trunk Unit 1H AWB	3/14/2023

RECEIVED
 Office of Oil and Gas
 WV Department of
 Environmental Protection
 AUG 21 2023



Actual Wellpath Report

Trunk Unit 1H AWP Proj: 21338'
Page 12 of 12



REFERENCE WELLPATH IDENTIFICATION			
Operator	ANTERO RESOURCES CORPORATION	Well	Trunk Unit 1H
Field	Tyler	API	47-095-02815-0000
Facility	Wrigley Pad	Wellbore	Trunk Unit 1H AWB
Slot	Slot A		

COMMENTS
<p>Wellpath general comments API: 47-095-02815-0000 BH Job #: 111653820 Rig: H&P 531 Duration: 3/13/2023-3/17/2023 Gyrodatta MS Gyro <17-1/2"> (100'-550') APS EM <12-1/4"> (550')(678'-3500') APS EM <8-3/4"> (3500')(3596'-5677') BH AT Curve (x-Short) <8-1/2"> (5677')(5737'-7784') BH AT Curve (Axial) <8-1/2"> (7784')(7879'-21310') Sycamore: 6948' MD Middlesex: 7100' MD Burkett: 7259' MD Marcellus POE: 7313' MD Projected MD at TD: 21338'</p>

RECEIVED
Office of Oil and Gas
AUG 21 2023
WV Department of
Environmental Protection