



ANTERO RESOURCES CORPORATION

Location: Tyler County, WV
Field: Tyler
Facility: Wrigley Pad

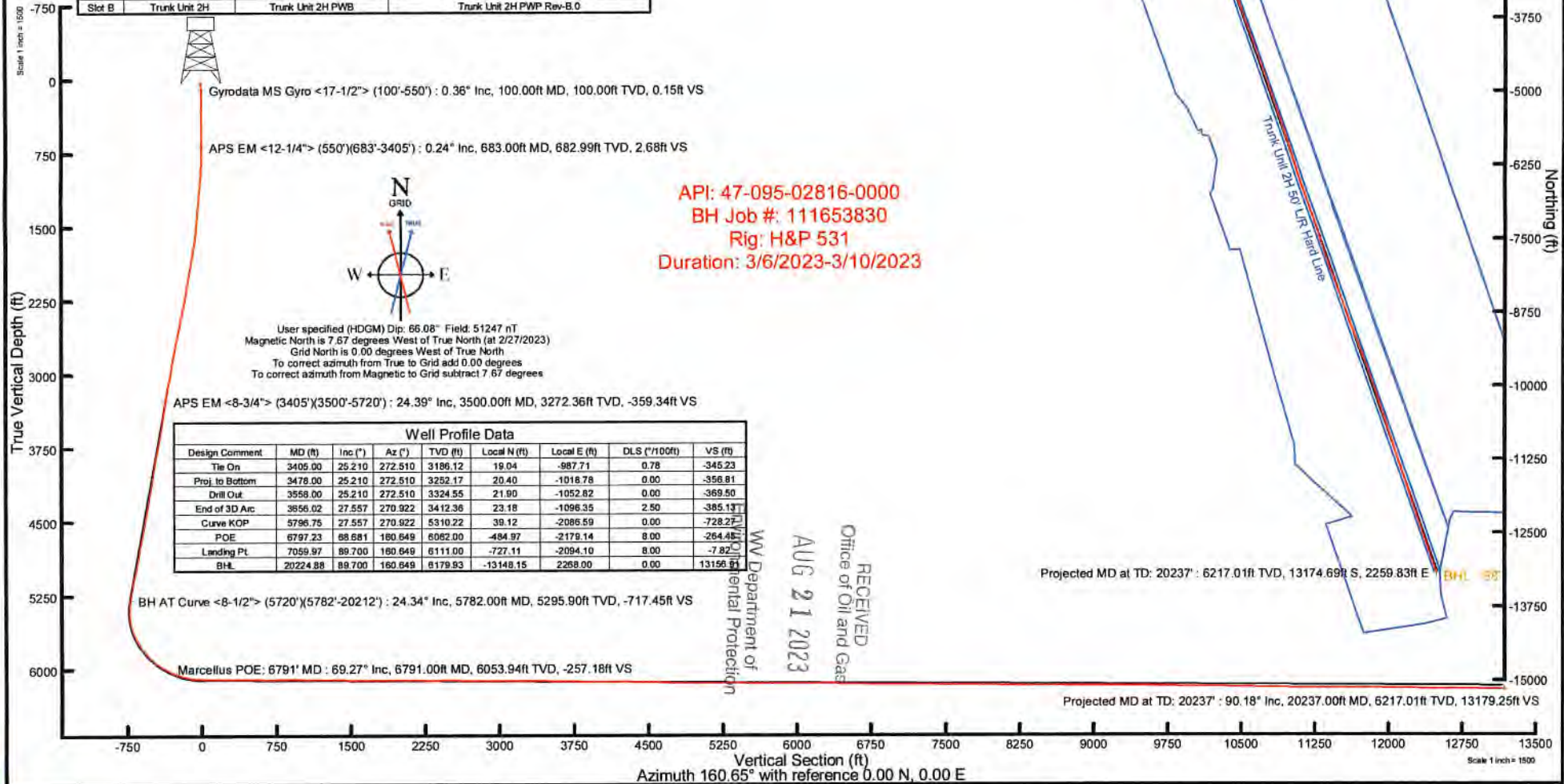
Slot: Slot B
Well: Trunk Unit 2H
Wellbore: Trunk Unit 2H PWB



Big reference wellpath is Trunk Unit 2H PWP Rev-B.0	Grid System: NAD27 / UTM Zone 17 North, US feet
True vertical depths are referenced to H&P 531 (RKB)	North Reference: Grid north
Reference wellpath measured depths are referenced to H&P 531 (RKB)	Scale: True distance
H&P 531 (RKB) to Mean Sea Level: 807 feet	Coordinates are in feet referenced to Slot
Mean Sea Level to Ground level (At Slot: Slot B)	Depth is in feet
Other wellpath IDs are referenced to each path's detail MD datum	Created by: slippy on 2023/03/14, Database: WA_MPL_EAST/IRMS_Data

Location Information				
Facility Name	Grid East (US ft)	Grid North (US ft)	Latitude	Longitude
Wrigley Pad	1636329.430	14315291.560	39°25'16.2520"N	81°00'26.6070"W
Slot	Local N (ft)	Local E (ft)	Grid East (US ft)	Grid North (US ft)
Slot B	-4.76	14.21	1636343.630	14315298.800
Comment: Trunk Unit 2H				
H&P 531 (RKB) to Ground level (At Slot: Slot B)				30ft
Mean Sea Level to Ground level (At Slot: Slot B)				-537ft
H&P 531 (RKB) to Mean Sea Level				867ft

Well Data			
Slot	Well	Wellbore	Wellpath
Slot B	Trunk Unit 2H	Trunk Unit 2H AWB	Trunk Unit 2H AWP Proj. 20237
Slot B	Trunk Unit 2H	Trunk Unit 2H PWB	Trunk Unit 2H PWP Rev-B.0



Well Profile Data							
Design Comment	MD (ft)	Inc (°)	Az (°)	TVD (ft)	Local N (ft)	Local E (ft)	VS (ft)
Tie On	3405.00	25.210	272.510	3186.12	19.04	-987.71	0.78
Proj. to Bottom	3478.00	25.210	272.510	3252.17	20.40	-1018.78	0.00
Drill Out	3558.00	25.210	272.510	3324.55	21.90	-1052.82	0.00
End of 3D Arc	3656.02	27.557	270.922	3412.36	23.18	-1096.35	2.50
Curve KOP	5796.75	27.557	270.922	5310.22	39.12	-2086.59	0.00
POE	6797.23	68.681	160.649	6062.00	-494.97	-2179.14	8.00
Landing Pt	7059.97	89.700	160.649	6111.00	-727.11	-2094.10	8.00
BHL	20224.88	89.700	160.649	6179.93	-13148.15	2268.00	0.00

Handwritten initials 'R'



Actual Wellpath Report

Trunk Unit 2H AWP Proj: 20237'
Page 1 of 11



REFERENCE WELLPATH IDENTIFICATION			
Operator	ANTERO RESOURCES CORPORATION	Well	Trunk Unit 2H
Field	Tyler	API	47-095-02816-0000
Facility	Wrigley Pad	Wellbore	Trunk Unit 2H AWB
Slot	Slot B		

REPORT SETUP INFORMATION			
Projection System	NAD27 / UTM Zone 17 North, US feet	Software System	WellArchitect® 6.0
North Reference	Grid	User	Edsaryar
Scale	0.999600	Report Generated	3/14/2023 at 12:29:05 AM
Convergence at slot	0.00°	Database	WA_MPL_EASTERNUS_Defn

WELLPATH LOCATION						
	Local coordinates		Grid coordinates		Geographic coordinates	
	North[ft]	East[ft]	Easting[US ft]	Northing[US ft]	Latitude	Longitude
Slot Location	-4.76	14.21	1638343.63	14315286.80	39°25'16.2450"N	81°00'26.4260"W
Facility Reference Pt			1638329.43	14315291.56	39°25'16.2920"N	81°00'26.6070"W
Field Reference Pt			0.00	0.00	0°00'0.0000"	85°29'19.3013"W

WELLPATH DATUM			
Calculation method	Minimum curvature	H&P 531 (RKB) to Facility Vertical Datum	967.00ft
Horizontal Reference Pt	Slot	H&P 531 (RKB) to Mean Sea Level	967.00ft
Vertical Reference Pt	H&P 531 (RKB)	H&P 531 (RKB) to Ground Level at Slot (Slot B)	30.00ft
MD Reference Pt	H&P 531 (RKB)	Section Origin	N 0.00, E 0.00 ft
Field Vertical Reference	Mean Sea Level	Section Azimuth	160.65°

RECEIVED
 Office of Oil and Gas
 AUG 21 2023
 WV Department of
 Environmental Protection



Actual Wellpath Report

Trunk Unit 2H AWP Proj: 20237'
Page 2 of 11



REFERENCE WELLPATH IDENTIFICATION			
Operator	ANTERO RESOURCES CORPORATION	Well	Trunk Unit 2H
Field	Tyler	API	47-095-02816-0000
Facility	Wrigley Pad	Wellbore	Trunk Unit 2H AWB
Slot	Slot B		

WELLPATH DATA (222 stations) † = interpolated, ‡ = extrapolated station																	
MD [ft]	Inclination [°]	Azimuth [°]	TVD [ft]	Vert Sect [ft]	North [ft]	East [ft]	Grid East [US ft]	Grid North [US ft]	Latitude	Longitude	Closure Dist [ft]	Closure Dir [°]	DLS ["/100ft]	Build Rate ["/100ft]	Turn Rate ["/100ft]	Comments	
0.00	0.000	112.820	0.00	0.00	0.00	0.00	1638343.63	14315286.80	39°25'16.2450"N	81°00'26.4260"W	0.00	0.000	0.00	0.00	0.00		
30.00	0.000	112.820	30.00	0.00	0.00	0.00	1638343.63	14315286.80	39°25'16.2450"N	81°00'26.4260"W	0.00	0.000	0.00	0.00	0.00		
100.00	0.360	112.820	100.00	0.15	-0.09	0.20	1638343.83	14315286.71	39°25'16.2441"N	81°00'26.4234"W	0.22	112.820	0.51	0.51	0.00		Gyrodata MS Gyro <17-1/2"> (100'-550')
200.00	0.350	113.730	200.00	0.57	-0.33	0.77	1638344.40	14315286.47	39°25'16.2417"N	81°00'26.4162"W	0.84	113.151	0.01	-0.01	0.91		
300.00	0.220	143.850	300.00	0.96	-0.61	1.16	1638344.79	14315286.19	39°25'16.2390"N	81°00'26.4112"W	1.31	117.564	0.19	-0.13	30.12		
400.00	0.260	138.500	400.00	1.35	-0.93	1.43	1638345.06	14315285.87	39°25'16.2357"N	81°00'26.4078"W	1.71	123.151	0.05	0.04	-5.35		
500.00	0.360	131.370	499.99	1.84	-1.31	1.81	1638345.44	14315285.49	39°25'16.2320"N	81°00'26.4029"W	2.24	125.839	0.11	0.10	-7.13		
550.00	0.340	122.840	549.99	2.09	-1.49	2.06	1638345.69	14315285.31	39°25'16.2302"N	81°00'26.3998"W	2.54	126.006	0.11	-0.04	-17.06		
683.00	0.240	158.200	682.99	2.68	-1.97	2.49	1638346.12	14315284.83	39°25'16.2255"N	81°00'26.3943"W	3.17	128.291	0.15	-0.08	26.59		APS EM <12-1/4"> (550')(683'-3405')
767.00	1.890	267.480	766.98	2.46	-2.19	1.17	1638344.80	14315284.61	39°25'16.2233"N	81°00'26.4111"W	2.49	151.838	2.36	1.96	130.10		
862.00	4.580	275.140	861.82	0.43	-1.92	-4.17	1638339.46	14315284.88	39°25'16.2260"N	81°00'26.4792"W	4.59	245.272	2.86	2.83	8.06		
951.00	7.070	277.560	950.35	-3.52	-0.88	-13.14	1638330.49	14315285.92	39°25'16.2362"N	81°00'26.5935"W	13.17	266.162	2.81	2.80	2.72		
1035.00	8.980	278.740	1033.52	-8.95	0.79	-24.75	1638318.89	14315287.59	39°25'16.2528"N	81°00'26.7413"W	24.76	271.840	2.28	2.27	1.40		
1131.00	10.840	275.310	1128.09	-16.24	2.77	-41.14	1638302.51	14315289.57	39°25'16.2723"N	81°00'26.9503"W	41.23	273.850	2.03	1.94	-3.57		
1225.00	12.810	271.300	1220.09	-23.61	3.82	-60.36	1638283.29	14315290.62	39°25'16.2827"N	81°00'27.1952"W	60.48	273.624	2.27	2.10	-4.27		
1320.00	14.970	268.660	1312.31	-31.12	3.78	-83.16	1638260.50	14315290.57	39°25'16.2822"N	81°00'27.4857"W	83.25	272.599	2.37	2.27	-2.78		
1414.00	16.970	267.550	1402.68	-38.86	2.91	-109.01	1638234.67	14315289.70	39°25'16.2736"N	81°00'27.8150"W	109.05	271.527	2.15	2.13	-1.18		
1509.00	19.070	269.300	1493.01	-47.85	2.12	-138.38	1638205.31	14315288.92	39°25'16.2658"N	81°00'28.1893"W	138.40	270.879	2.28	2.21	1.84		
1604.00	21.470	269.290	1582.12	-58.37	1.72	-171.29	1638172.41	14315288.52	39°25'16.2618"N	81°00'28.6086"W	171.30	270.575	2.53	2.53	-0.01		
1698.00	24.690	269.460	1668.59	-70.21	1.32	-208.13	1638135.58	14315288.12	39°25'16.2578"N	81°00'29.0781"W	208.13	270.363	3.43	3.43	0.18		
1793.00	26.810	270.200	1754.15	-83.77	1.21	-249.40	1638094.33	14315288.01	39°25'16.2567"N	81°00'29.6039"W	249.40	270.277	2.26	2.23	0.78		
1887.00	27.150	268.590	1837.92	-97.47	0.75	-292.04	1638051.71	14315287.55	39°25'16.2522"N	81°00'30.1473"W	292.04	270.148	0.86	0.36	-1.71		
1982.00	28.060	268.260	1922.10	-110.91	-0.46	-336.04	1638007.72	14315286.34	39°25'16.2401"N	81°00'30.7080"W	336.04	269.922	0.97	0.96	-0.35		
2079.00	29.010	268.690	2007.32	-125.10	-1.69	-382.36	1637961.42	14315285.11	39°25'16.2279"N	81°00'31.2982"W	382.36	269.747	1.00	0.98	0.44		
2173.00	29.120	268.710	2089.48	-139.25	-2.72	-428.01	1637915.79	14315284.08	39°25'16.2177"N	81°00'31.8799"W	428.02	269.635	0.12	0.12	0.02		
2268.00	29.080	266.640	2172.49	-152.77	-4.60	-474.17	1637869.65	14315282.20	39°25'16.1991"N	81°00'32.4681"W	474.19	269.444	1.06	-0.04	-2.18		
2363.00	28.960	270.550	2255.57	-166.96	-5.73	-520.22	1637823.62	14315281.07	39°25'16.1879"N	81°00'33.0549"W	520.25	269.369	2.00	-0.13	4.12		
2458.00	29.000	272.920	2338.68	-183.52	-4.34	-566.22	1637777.64	14315282.46	39°25'16.2016"N	81°00'33.6410"W	566.24	269.561	1.21	0.04	2.49		
2552.00	28.800	271.790	2420.97	-200.32	-2.47	-611.61	1637732.27	14315284.33	39°25'16.2200"N	81°00'34.2193"W	611.61	269.769	0.62	-0.21	-1.20		
2647.00	27.160	274.480	2504.87	-217.33	-0.06	-656.10	1637687.79	14315286.74	39°25'16.2438"N	81°00'34.7863"W	656.10	269.995	2.18	-1.73	2.83		

RECEIVED
 Office of Oil and Gas
 AUG 21 2023
 WV Department of
 Environmental Protection



Actual Wellpath Report

Trunk Unit 2H AWP Proj: 20237*
Page 3 of 11



REFERENCE WELLPATH IDENTIFICATION			
Operator	ANTERO RESOURCES CORPORATION	Well	Trunk Unit 2H
Field	Tyler	API	47-095-02816-0000
Facility	Wrigley Pad	Wellbore	Trunk Unit 2H AWB
Slot	Slot B		

WELLPATH DATA (222 stations)																	
MD [ft]	Inclination [°]	Azimuth [°]	TVD [ft]	Vert Sect [ft]	North [ft]	East [ft]	Grid East [US ft]	Grid North [US ft]	Latitude	Longitude	Closure Dist [ft]	Closure Dir [°]	DLS [°/100ft]	Build Rate [°/100ft]	Turn Rate [°/100ft]	Comments	
2742.00	26.340	276.350	2589.70	-235.23	3.96	-698.67	1637645.25	14315290.76	39°25'16.2835"N	81°00'35.3287"W	698.68	270.325	1.24	-0.86	1.97		
2836.00	26.290	274.750	2673.96	-252.78	7.99	-740.14	1637603.79	14315294.79	39°25'16.3233"N	81°00'35.8571"W	740.18	270.619	0.76	-0.05	-1.70		
2931.00	26.100	273.450	2759.21	-269.47	10.99	-781.96	1637561.98	14315297.79	39°25'16.3529"N	81°00'36.3901"W	782.04	270.806	0.64	-0.20	-1.37		
3026.00	25.970	271.480	2844.57	-284.96	12.79	-823.62	1637520.34	14315299.58	39°25'16.3706"N	81°00'36.9209"W	823.72	270.890	0.92	-0.14	-2.07		
3120.00	25.690	269.590	2929.18	-298.89	13.18	-864.57	1637479.41	14315299.97	39°25'16.3743"N	81°00'37.4427"W	864.67	270.873	0.93	-0.30	-2.01		
3215.00	25.780	273.310	3014.76	-313.54	14.22	-905.78	1637438.21	14315301.01	39°25'16.3846"N	81°00'37.9679"W	905.89	270.899	1.70	0.09	3.92		
3310.00	25.690	273.820	3100.34	-329.60	16.79	-946.95	1637397.06	14315303.58	39°25'16.4099"N	81°00'38.4925"W	947.10	271.015	0.25	-0.09	0.54		
3405.00	25.210	272.510	3186.12	-345.23	19.04	-987.71	1637356.32	14315305.84	39°25'16.4322"N	81°00'39.0118"W	987.90	271.105	0.78	-0.51	-1.38		
3500.00	24.390	270.220	3272.36	-359.34	20.00	-1027.54	1637316.50	14315306.80	39°25'16.4417"N	81°00'39.5194"W	1027.74	271.115	1.33	-0.86	-2.41	APS EM <8-3/4"> (3405')(3500'-5720')	
3596.00	25.860	267.530	3359.28	-372.06	19.18	-1068.28	1637275.78	14315305.97	39°25'16.4334"N	81°00'40.0385"W	1068.45	271.028	1.94	1.53	-2.80		
3691.00	28.850	267.220	3443.65	-384.61	17.17	-1111.88	1637232.19	14315303.97	39°25'16.4136"N	81°00'40.5941"W	1112.02	270.885	3.15	3.15	-0.33		
3786.00	30.660	266.870	3526.12	-397.92	14.74	-1158.97	1637185.13	14315301.53	39°25'16.3894"N	81°00'41.1940"W	1159.06	270.729	1.91	1.91	-0.37		
3880.00	30.230	267.720	3607.16	-411.56	12.49	-1206.54	1637137.57	14315299.28	39°25'16.3672"N	81°00'41.8003"W	1206.61	270.593	0.65	-0.46	0.90		
3975.00	29.630	269.930	3689.49	-426.33	11.51	-1253.92	1637090.21	14315298.30	39°25'16.3574"N	81°00'42.4040"W	1253.98	270.526	1.32	-0.63	2.33		
4069.00	29.340	270.320	3771.32	-441.76	11.61	-1300.19	1637043.96	14315298.40	39°25'16.3583"N	81°00'42.9936"W	1300.24	270.512	0.37	-0.31	0.41		
4164.00	28.540	270.710	3854.45	-457.37	12.02	-1346.16	1636998.01	14315298.82	39°25'16.3623"N	81°00'43.5793"W	1346.21	270.512	0.87	-0.84	0.41		
4258.00	27.770	269.990	3937.33	-472.33	12.29	-1390.51	1636953.68	14315299.09	39°25'16.3650"N	81°00'44.1444"W	1390.57	270.507	0.90	-0.82	-0.77		
4353.00	26.920	267.330	4021.72	-485.83	11.29	-1434.13	1636910.08	14315298.08	39°25'16.3550"N	81°00'44.7002"W	1434.17	270.451	1.57	-0.89	-2.80		
4448.00	26.120	269.810	4106.72	-498.87	10.22	-1476.52	1636867.70	14315297.01	39°25'16.3443"N	81°00'45.2404"W	1476.56	270.396	1.44	-0.84	2.61		
4542.00	26.020	273.460	4191.16	-513.65	11.39	-1517.80	1636826.44	14315298.19	39°25'16.3559"N	81°00'45.7664"W	1517.84	270.430	1.71	-0.11	3.88		
4637.00	24.690	270.060	4277.01	-528.33	12.67	-1558.44	1636785.81	14315299.47	39°25'16.3685"N	81°00'46.2843"W	1558.49	270.466	2.08	-1.40	-3.58		
4731.00	25.330	270.400	4362.20	-541.65	12.83	-1598.18	1636746.09	14315299.63	39°25'16.3700"N	81°00'46.7907"W	1598.23	270.460	0.70	0.68	0.36		
4826.00	28.040	273.870	4447.08	-557.32	14.48	-1640.79	1636703.50	14315301.28	39°25'16.3863"N	81°00'47.3336"W	1640.86	270.506	3.29	2.85	3.65		
4920.00	26.720	271.540	4530.55	-573.57	16.54	-1683.97	1636660.34	14315303.33	39°25'16.4066"N	81°00'47.8838"W	1684.05	270.563	1.81	-1.40	-2.48		
5015.00	27.250	270.740	4615.21	-588.66	17.40	-1727.06	1636617.26	14315304.19	39°25'16.4149"N	81°00'48.4329"W	1727.15	270.577	0.68	0.56	-0.84		
5109.00	30.050	272.930	4697.69	-604.97	18.88	-1772.10	1636572.25	14315305.67	39°25'16.4295"N	81°00'49.0068"W	1772.20	270.610	3.18	2.98	2.33		
5204.00	28.560	270.710	4780.53	-621.78	20.38	-1818.56	1636525.80	14315307.17	39°25'16.4442"N	81°00'49.5988"W	1818.68	270.642	1.94	-1.57	-2.34		
5298.00	27.690	267.320	4863.44	-635.76	19.63	-1862.85	1636481.53	14315306.42	39°25'16.4368"N	81°00'50.1632"W	1862.95	270.604	1.94	-0.93	-3.61		
5393.00	26.620	270.910	4947.97	-649.46	18.94	-1906.18	1636438.21	14315305.73	39°25'16.4299"N	81°00'50.7153"W	1906.28	270.569	2.06	-1.13	3.78		
5488.00	28.100	277.100	5032.36	-666.80	22.04	-1949.68	1636394.74	14315308.83	39°25'16.4605"N	81°00'51.2696"W	1949.80	270.648	3.37	1.56	6.52		

RECEIVED
 Office of Oil and Gas
 AUG 21 2023
 WY Department of
 Environmental Protection



Actual Wellpath Report

Trunk Unit 2H AWP Proj: 20237'
Page 4 of 11



REFERENCE WELLPATH IDENTIFICATION			
Operator	ANTERO RESOURCES CORPORATION	Well	Trunk Unit 2H
Field	Tyler	API	47-095-02816-0000
Facility	Wrigley Pad	Wellbore	Trunk Unit 2H AWB
Slot	Slot B		

WELLPATH DATA (222 stations) † = interpolated, ‡ = extrapolated station																
MD [ft]	Inclination [°]	Azimuth [°]	TVD [ft]	Vert Sect [ft]	North [ft]	East [ft]	Grid East [US ft]	Grid North [US ft]	Latitude	Longitude	Closure Dist [ft]	Closure Dir [°]	DLS ["/100ft]	Build Rate ["/100ft]	Turn Rate ["/100ft]	Comments
5583.00	26.810	274.390	5116.66	-685.39	26.45	-1993.24	1636351.19	14315313.24	39°25'16.5040"N	81°00'51.8247"W	1993.42	270.760	1.89	-1.36	-2.85	
5678.00	25.950	272.960	5201.77	-701.91	29.16	-2035.36	1636309.09	14315315.95	39°25'16.5307"N	81°00'52.3614"W	2035.57	270.821	1.13	-0.91	-1.51	
5720.00	25.320	271.180	5239.64	-708.55	29.82	-2053.52	1636290.94	14315316.61	39°25'16.5372"N	81°00'52.5928"W	2053.74	270.832	2.37	-1.50	-4.24	
5782.00	24.340	270.080	5295.90	-717.45	30.11	-2079.55	1636264.91	14315316.90	39°25'16.5401"N	81°00'52.9245"W	2079.77	270.830	1.75	-1.58	-1.77	BH AT Curve <8-1/2"> (5720')(5782'-20212')
5800.00	23.210	269.280	5312.38	-719.81	30.07	-2086.81	1636257.66	14315318.86	39°25'16.5397"N	81°00'53.0170"W	2087.03	270.826	6.53	-6.28	-4.44	
5895.00	28.590	255.940	5397.88	-727.90	24.31	-2127.64	1636216.84	14315311.10	39°25'16.4826"N	81°00'53.5373"W	2127.78	270.655	8.32	5.66	-14.04	
5989.00	25.530	233.530	5481.79	-724.00	6.75	-2165.86	1636178.64	14315293.55	39°25'16.3090"N	81°00'54.0242"W	2165.87	270.179	11.26	-3.26	-23.84	
6084.00	27.910	222.010	5566.70	-707.30	-21.96	-2197.23	1636147.29	14315264.85	39°25'16.0252"N	81°00'54.4238"W	2197.34	269.427	5.99	2.51	-12.13	
6178.00	30.320	207.550	5648.92	-680.51	-59.40	-2222.96	1636121.56	14315227.43	39°25'15.6552"N	81°00'54.7517"W	2223.75	268.469	7.89	2.56	-15.38	
6272.00	34.420	193.110	5728.42	-641.81	-106.40	-2239.99	1636104.54	14315180.44	39°25'15.1906"N	81°00'54.9686"W	2242.52	267.281	9.28	4.36	-15.36	
6367.00	39.240	179.180	5804.57	-590.54	-162.72	-2245.67	1636098.87	14315124.14	39°25'14.6339"N	81°00'55.0408"W	2251.55	265.856	10.12	5.07	-14.66	
6441.00†	43.496	172.929	5860.11	-543.42	-211.44	-2242.19	1636102.34	14315075.44	39°25'14.1524"N	81°00'54.9964"W	2252.14	264.613	8.01	5.75	-8.45	Sycamore: 6441' MD
6461.00	44.700	171.410	5874.48	-529.79	-225.23	-2240.30	1636104.24	14315061.66	39°25'14.0161"N	81°00'54.9722"W	2251.59	264.259	8.01	6.02	-7.60	
6556.00	50.140	163.320	5938.79	-460.43	-293.31	-2224.81	1636119.71	14314993.61	39°25'13.3433"N	81°00'54.7748"W	2244.06	262.490	8.48	5.73	-8.52	
6580.00†	52.383	163.689	5953.81	-441.73	-311.26	-2219.50	1636125.02	14314975.67	39°25'13.1659"N	81°00'54.7070"W	2241.22	262.017	9.42	9.35	1.54	Middlesex: 6580' MD
6650.00	58.930	164.650	5993.28	-384.08	-366.83	-2203.76	1636140.76	14314920.11	39°25'12.6166"N	81°00'54.5064"W	2234.08	260.549	9.42	9.35	1.37	
6733.00†	65.684	163.209	6031.83	-310.75	-437.40	-2183.40	1636161.11	14314849.57	39°25'11.9192"N	81°00'54.2468"W	2226.78	258.672	8.28	8.14	-1.74	Burkett: 6733' MD
6744.00	66.580	163.030	6036.28	-300.70	-447.03	-2180.48	1636164.03	14314839.95	39°25'11.8241"N	81°00'54.2095"W	2225.83	258.414	8.28	8.15	-1.62	
6791.00†	69.266	162.839	6053.94	-257.18	-488.66	-2167.70	1636176.80	14314798.34	39°25'11.4126"N	81°00'54.0466"W	2222.09	257.296	5.73	5.72	-0.41	Marcellus POE: 6791' MD
6839.00	72.010	162.650	6069.86	-211.93	-531.90	-2154.27	1636190.23	14314755.11	39°25'10.9853"N	81°00'53.8753"W	2218.96	256.131	5.73	5.72	-0.39	
6933.00	80.690	163.700	6092.02	-120.77	-619.26	-2127.87	1636216.62	14314667.79	39°25'10.1219"N	81°00'53.5388"W	2216.14	253.774	9.30	9.23	1.12	
7028.00	87.170	161.710	6102.06	-26.41	-709.40	-2099.79	1636244.68	14314577.69	39°25'9.2311"N	81°00'53.1808"W	2216.38	251.333	7.13	6.82	-2.09	
7122.00	90.310	162.950	6104.13	67.51	-798.93	-2071.27	1636273.19	14314488.19	39°25'8.3463"N	81°00'52.8172"W	2220.01	248.907	3.59	3.34	1.32	
7217.00	89.320	160.820	6104.43	162.48	-889.21	-2041.73	1636302.72	14314397.94	39°25'7.4540"N	81°00'52.4407"W	2226.97	246.466	2.47	-1.04	-2.24	
7311.00	89.290	158.490	6105.57	256.45	-977.34	-2009.06	1636335.38	14314309.86	39°25'6.5831"N	81°00'52.0242"W	2234.17	244.059	2.48	-0.03	-2.48	
7406.00	90.250	160.740	6105.96	351.43	-1066.38	-1975.97	1636368.46	14314220.85	39°25'5.7031"N	81°00'51.6024"W	2245.35	241.645	2.57	1.01	2.37	
7501.00	89.140	160.540	6106.46	446.43	-1156.01	-1944.48	1636399.94	14314131.26	39°25'4.8173"N	81°00'51.2009"W	2262.15	239.268	1.19	-1.17	-0.21	
7595.00	89.170	160.880	6107.85	540.42	-1244.72	-1913.43	1636430.97	14314042.58	39°25'3.9405"N	81°00'50.8051"W	2282.66	236.955	0.36	0.03	0.36	
7690.00	89.260	160.740	6109.15	635.41	-1334.43	-1882.20	1636462.18	14313952.91	39°25'3.0539"N	81°00'50.4071"W	2307.25	234.664	0.18	0.09	-0.15	
7785.00	91.080	160.330	6108.87	730.40	-1424.00	-1850.55	1636493.83	14313863.38	39°25'2.1687"N	81°00'50.0036"W	2335.02	232.422	1.96	1.92	-0.43	

RECEIVED
 Office of Oil and Gas
 AUG 21 2023
 WV Department of
 Environmental Protection



Actual Wellpath Report

Trunk Unit 2H AWP Proj: 20237
Page 5 of 11



REFERENCE WELLPATH IDENTIFICATION			
Operator	ANTERO RESOURCES CORPORATION	Well	Trunk Unit 2H
Field	Tyler	API	47-095-02816-0000
Facility	Wrigley Pad	Wellbore	Trunk Unit 2H AWB
Slot	Slot B		

WELLPATH DATA (222 stations)																
MD [ft]	Inclination [°]	Azimuth [°]	TVD [ft]	Vert Sect [ft]	North [ft]	East [ft]	Grid East [US ft]	Grid North [US ft]	Latitude	Longitude	Closure Dist [ft]	Closure Dir [°]	DLS ["/100ft]	Build Rate ["/100ft]	Turn Rate ["/100ft]	Comments
7879.00	90.890	160.260	6107.25	824.39	-1512.48	-1818.86	1636525.50	14313774.93	39°25'1.2943"N	81°00'49.5996"W	2365.55	230.255	0.22	-0.20	-0.07	
7974.00	89.050	156.950	6107.30	919.31	-1600.92	-1784.21	1636560.14	14313686.53	39°25'0.4203"N	81°00'49.1580"W	2397.15	228.099	3.99	-1.94	-3.48	
8068.00	89.290	157.810	6108.66	1013.14	-1687.68	-1748.06	1636596.27	14313599.80	39°24'59.5628"N	81°00'48.6972"W	2429.81	226.007	0.95	0.26	0.91	
8162.00	89.040	157.530	6110.03	1107.01	-1774.62	-1712.35	1636631.97	14313512.90	39°24'58.7036"N	81°00'48.2420"W	2466.05	223.977	0.40	-0.27	-0.30	
8257.00	88.610	160.630	6111.98	1201.94	-1863.33	-1678.44	1636665.87	14313424.22	39°24'57.8269"N	81°00'47.8098"W	2507.82	222.012	3.29	-0.45	3.26	
8352.00	89.820	159.090	6113.28	1296.92	-1952.50	-1645.73	1636698.56	14313335.08	39°24'56.9455"N	81°00'47.3929"W	2553.57	220.127	2.06	1.27	-1.62	
8446.00	90.150	160.020	6113.31	1390.90	-2040.58	-1612.90	1636731.38	14313247.04	39°24'56.0751"N	81°00'46.9744"W	2601.04	218.323	1.05	0.35	0.99	
8541.00	88.280	160.190	6114.61	1485.88	-2129.90	-1580.57	1636763.69	14313157.76	39°24'55.1924"N	81°00'46.5624"W	2652.30	216.579	1.98	-1.97	0.18	
8635.00	91.420	160.500	6114.85	1579.87	-2218.41	-1548.96	1636795.29	14313069.28	39°24'54.3176"N	81°00'46.1594"W	2705.67	214.924	3.36	3.34	0.33	
8730.00	89.780	160.880	6113.86	1674.86	-2308.06	-1517.55	1636826.69	14312979.67	39°24'53.4316"N	81°00'45.7591"W	2762.26	213.325	1.77	-1.73	0.40	
8825.00	89.660	160.930	6114.32	1769.86	-2397.83	-1486.47	1636857.76	14312889.93	39°24'52.5444"N	81°00'45.3629"W	2821.20	211.796	0.14	-0.13	0.05	
8919.00	89.510	160.500	6115.00	1863.85	-2486.55	-1455.43	1636888.79	14312801.25	39°24'51.6675"N	81°00'44.9672"W	2881.18	210.341	0.48	-0.16	-0.46	
9014.00	89.110	162.490	6116.15	1958.83	-2576.63	-1425.28	1636918.92	14312711.21	39°24'50.7773"N	81°00'44.5830"W	2944.56	208.949	2.14	-0.42	2.09	
9108.00	89.050	160.390	6117.66	2052.81	-2665.72	-1395.37	1636948.83	14312622.15	39°24'49.8968"N	81°00'44.2017"W	3008.84	207.630	2.23	-0.06	-2.23	
9203.00	90.650	160.370	6117.91	2147.80	-2755.21	-1363.47	1636980.71	14312532.70	39°24'49.0124"N	81°00'43.7951"W	3074.12	206.329	1.68	1.68	-0.02	
9297.00	88.680	158.700	6118.46	2241.77	-2843.26	-1330.61	1637013.56	14312444.68	39°24'48.1421"N	81°00'43.3762"W	3139.21	205.079	2.75	-2.10	-1.78	
9392.00	90.060	160.300	6119.50	2336.74	-2932.24	-1297.34	1637046.81	14312355.74	39°24'47.2628"N	81°00'42.9523"W	3206.42	203.867	2.22	1.45	1.68	
9487.00	91.450	161.970	6118.25	2431.73	-3022.12	-1266.63	1637077.51	14312265.89	39°24'46.3745"N	81°00'42.5608"W	3276.82	202.739	2.29	1.46	1.76	
9581.00	89.170	161.100	6117.74	2525.71	-3111.27	-1236.86	1637107.27	14312176.78	39°24'45.4934"N	81°00'42.1814"W	3348.11	201.680	2.60	-2.43	-0.93	
9675.00	89.290	160.590	6119.00	2619.70	-3200.06	-1206.02	1637138.10	14312088.03	39°24'44.6159"N	81°00'41.7883"W	3419.78	200.650	0.56	0.13	-0.54	
9770.00	90.120	161.570	6119.49	2714.69	-3289.93	-1175.21	1637168.89	14311998.20	39°24'43.7278"N	81°00'41.3957"W	3493.53	199.658	1.35	0.87	1.03	
9865.00	89.690	161.220	6119.65	2809.68	-3379.96	-1144.90	1637199.19	14311908.20	39°24'42.8379"N	81°00'41.0094"W	3568.60	198.713	0.58	-0.45	-0.37	
9959.00	90.000	160.900	6119.91	2903.68	-3468.87	-1114.39	1637229.68	14311819.32	39°24'41.9592"N	81°00'40.6205"W	3643.48	197.810	0.47	0.33	-0.34	
10054.00	90.340	160.520	6119.62	2998.68	-3558.54	-1083.01	1637261.05	14311729.69	39°24'41.0731"N	81°00'40.2205"W	3719.69	196.927	0.54	0.36	-0.40	
10149.00	89.480	160.630	6119.77	3093.68	-3648.13	-1051.42	1637292.64	14311640.14	39°24'40.1876"N	81°00'39.8179"W	3796.62	196.077	0.91	-0.91	0.12	
10243.00	89.080	158.980	6120.95	3187.66	-3736.34	-1018.97	1637325.07	14311551.96	39°24'39.3158"N	81°00'39.4044"W	3872.79	195.255	1.81	-0.43	-1.76	
10338.00	89.540	160.460	6122.10	3282.64	-3825.44	-986.05	1637357.98	14311462.90	39°24'38.4352"N	81°00'38.9847"W	3950.48	194.454	1.63	0.48	1.56	
10433.00	89.880	160.480	6122.58	3377.63	-3914.97	-954.29	1637389.72	14311373.40	39°24'37.5504"N	81°00'38.5800"W	4029.60	193.699	0.36	0.36	0.02	
10527.00	89.350	160.540	6123.21	3471.63	-4003.59	-922.93	1637421.07	14311284.82	39°24'36.6746"N	81°00'38.1803"W	4108.59	192.981	0.57	-0.56	0.06	
10622.00	89.050	160.480	6124.54	3566.62	-4093.13	-891.23	1637452.75	14311195.31	39°24'35.7896"N	81°00'37.7764"W	4189.04	192.284	0.32	-0.32	-0.06	

RECEIVED
 Office of Oil and Gas
 AUG 21 2023
 WV Department of
 Environmental Protection



Actual Wellpath Report

Trunk Unit 2H AWP Proj: 20237'
Page 6 of 11



REFERENCE WELLPATH IDENTIFICATION			
Operator	ANTERO RESOURCES CORPORATION	Well	Trunk Unit 2H
Field	Tyler	API	47-095-02816-0000
Facility	Wrigley Pad	Wellbore	Trunk Unit 2H AWB
Slot	Slot B		

WELLPATH DATA (222 stations)																
MD [ft]	Inclination [°]	Azimuth [°]	TVD [ft]	Vert Sect [ft]	North [ft]	East [ft]	Grid East [US ft]	Grid North [US ft]	Latitude	Longitude	Closure Dist [ft]	Closure Dir [°]	DLS [°/100ft]	Build Rate [°/100ft]	Turn Rate [°/100ft]	Comments
10716.00	89.020	159.800	6126.12	3660.60	-4181.53	-859.30	1637484.67	14311106.95	39°24'34.9160"N	81°00'37.3695"W	4268.91	191.613	0.72	-0.03	-0.72	
10811.00	89.050	160.590	6127.72	3755.59	-4270.90	-827.12	1637516.84	14311017.62	39°24'34.0327"N	81°00'36.9593"W	4350.25	190.960	0.83	0.03	0.83	
10906.00	88.980	159.360	6129.35	3850.56	-4360.14	-794.60	1637549.35	14310928.41	39°24'33.1508"N	81°00'36.5448"W	4431.95	190.328	1.30	-0.07	-1.29	
11001.00	89.820	160.940	6130.35	3945.55	-4449.49	-762.34	1637581.59	14310839.10	39°24'32.2677"N	81°00'36.1338"W	4514.32	189.722	1.88	0.88	1.66	
11095.00	88.690	160.590	6130.75	4039.55	-4538.24	-731.37	1637612.55	14310750.39	39°24'31.3906"N	81°00'35.7391"W	4596.79	189.155	0.40	-0.14	-0.37	
11190.00	89.050	160.970	6131.79	4134.54	-4627.94	-700.10	1637643.81	14310660.72	39°24'30.5041"N	81°00'35.3406"W	4680.59	188.602	0.78	-0.67	0.40	
11284.00	89.850	158.040	6132.70	4228.51	-4715.97	-667.20	1637676.70	14310572.72	39°24'29.6340"N	81°00'34.9212"W	4762.93	188.053	3.23	0.85	-3.12	
11379.00	89.110	161.480	6133.56	4323.48	-4805.09	-634.34	1637709.55	14310483.64	39°24'28.7533"N	81°00'34.5025"W	4846.78	187.520	3.70	-0.78	3.62	
11473.00	89.320	161.700	6134.85	4417.46	-4894.27	-604.65	1637739.22	14310394.50	39°24'27.8719"N	81°00'34.1242"W	4931.48	187.043	0.32	0.22	0.23	
11568.00	88.920	162.150	6136.31	4512.42	-4984.57	-575.18	1637768.68	14310304.23	39°24'26.9794"N	81°00'33.7486"W	5017.64	186.582	0.63	-0.42	0.47	
11662.00	88.060	161.330	6138.78	4606.37	-5073.80	-545.74	1637798.11	14310215.04	39°24'26.0975"N	81°00'33.3734"W	5103.07	186.139	1.26	-0.91	-0.87	
11756.00	86.060	158.050	6143.61	4700.22	-5161.83	-513.16	1637830.67	14310127.05	39°24'25.2275"N	81°00'32.9583"W	5187.27	185.677	4.08	-2.13	-3.49	
11851.00	89.540	162.340	6147.25	4795.11	-5251.11	-481.02	1637862.81	14310037.80	39°24'24.3452"N	81°00'32.5486"W	5273.09	185.234	5.81	3.66	4.52	
11945.00	89.880	161.540	6147.73	4889.08	-5340.48	-451.88	1637891.94	14309948.47	39°24'23.4619"N	81°00'32.1772"W	5359.56	184.836	0.92	0.36	-0.85	
12040.00	89.910	161.670	6147.90	4984.07	-5430.62	-421.90	1637921.90	14309858.36	39°24'22.5710"N	81°00'31.7952"W	5446.98	184.442	0.14	0.03	0.14	
12134.00	90.120	161.800	6147.88	5078.05	-5519.89	-392.44	1637951.35	14309769.13	39°24'21.6888"N	81°00'31.4198"W	5533.82	184.067	0.26	0.22	0.14	
12229.00	89.820	161.690	6147.93	5173.03	-5610.10	-362.68	1637981.10	14309678.95	39°24'20.7971"N	81°00'31.0406"W	5621.81	183.699	0.34	-0.32	-0.12	
12323.00	90.370	161.400	6147.77	5267.02	-5699.27	-332.92	1638010.84	14309589.82	39°24'19.9159"N	81°00'30.6614"W	5708.98	183.343	0.66	0.59	-0.31	
12418.00	90.250	161.680	6147.26	5362.01	-5789.38	-302.84	1638040.91	14309499.75	39°24'19.0253"N	81°00'30.2781"W	5797.29	182.994	0.32	-0.13	0.29	
12512.00	88.770	161.190	6148.06	5455.99	-5878.48	-272.91	1638070.82	14309410.68	39°24'18.1447"N	81°00'29.8967"W	5884.81	182.658	1.66	-1.57	-0.52	
12607.00	89.260	161.500	6149.70	5550.97	-5968.48	-242.53	1638101.20	14309320.72	39°24'17.2553"N	81°00'29.5095"W	5973.40	182.327	0.61	0.52	0.33	
12702.00	90.250	161.590	6150.10	5645.96	-6058.59	-212.46	1638131.26	14309230.65	39°24'16.3647"N	81°00'29.1263"W	6062.31	182.008	1.05	1.04	0.09	
12796.00	89.660	161.330	6150.18	5739.95	-6147.71	-182.57	1638161.13	14309141.56	39°24'15.4838"N	81°00'28.7455"W	6150.42	181.701	0.69	-0.63	-0.28	
12890.00	89.970	161.990	6150.48	5833.93	-6236.94	-152.99	1638190.70	14309052.37	39°24'14.6020"N	81°00'28.3686"W	6238.81	181.405	0.78	0.33	0.70	
12985.00	89.880	161.460	6150.60	5928.91	-6327.14	-123.20	1638220.48	14308962.20	39°24'13.7105"N	81°00'27.9890"W	6328.34	181.116	0.57	-0.09	-0.56	
13080.00	89.780	161.980	6150.89	6023.90	-6417.35	-93.41	1638250.26	14308872.03	39°24'12.8190"N	81°00'27.6093"W	6418.03	180.834	0.56	-0.11	0.55	
13175.00	89.910	161.840	6151.14	6118.87	-6507.65	-63.91	1638279.75	14308781.76	39°24'11.9265"N	81°00'27.2334"W	6507.97	180.563	0.20	0.14	-0.15	
13269.00	90.060	161.300	6151.17	6212.86	-6596.83	-34.19	1638309.45	14308692.62	39°24'11.0451"N	81°00'26.8547"W	6596.92	180.297	0.60	0.16	-0.57	
13364.00	89.110	161.060	6151.86	6307.85	-6686.75	-3.54	1638340.09	14308602.74	39°24'10.1564"N	81°00'26.4642"W	6686.75	180.030	1.03	-1.00	-0.25	
13458.00	88.920	160.880	6153.47	6401.84	-6775.80	27.10	1638370.72	14308513.93	39°24'9.2783"N	81°00'26.0738"W	6775.65	179.771	0.28	-0.20	-0.19	

RECEIVED
Office of Oil and Gas
AUG 21 2023
WV Department of
Environmental Protection



Actual Wellpath Report

Trunk Unit 2H AWP Proj: 20237'
Page 7 of 11



REFERENCE WELLPATH IDENTIFICATION			
Operator	ANTERO RESOURCES CORPORATION	Well	Trunk Unit 2H
Field	Tyler	API	47-095-02816-0000
Facility	Wrigley Pad	Wellbore	Trunk Unit 2H AWP
Slot	Slot B		

WELLPATH DATA (222 stations)																
MD [ft]	Inclination [°]	Azimuth [°]	TVD [ft]	Vert Sect [ft]	North [ft]	East [ft]	Grid East [US ft]	Grid North [US ft]	Latitude	Longitude	Closure Dist [ft]	Closure Dir [°]	DLS ["/100ft]	Build Rate ["/100ft]	Turn Rate ["/100ft]	Comments
13553.00	88.920	160.520	6155.26	6496.82	-6865.24	58.49	1638402.10	14308424.32	39°24'8.3923"N	81°00'25.6738"W	6865.49	179.512	0.38	0.00	-0.38	
13648.00	89.420	161.450	6156.64	6591.81	-6955.05	89.44	1638433.04	14308334.55	39°24'7.5047"N	81°00'25.2794"W	6955.62	179.263	1.11	0.53	0.98	
13742.00	88.800	161.110	6158.10	6685.79	-7044.06	119.61	1638463.19	14308245.57	39°24'6.6250"N	81°00'24.8951"W	7045.08	179.027	0.75	-0.66	-0.36	
13837.00	89.780	160.550	6159.28	6780.78	-7133.79	150.80	1638494.37	14308155.88	39°24'5.7382"N	81°00'24.4976"W	7135.38	178.789	1.19	1.03	-0.59	
13932.00	89.630	161.570	6159.76	6875.78	-7223.64	181.63	1638525.19	14308066.06	39°24'4.8501"N	81°00'24.1047"W	7225.92	178.560	1.09	-0.16	1.07	
14026.00	89.480	161.100	6160.49	6969.77	-7312.70	211.72	1638555.26	14307977.04	39°24'3.9700"N	81°00'23.7214"W	7315.76	178.342	0.52	-0.16	-0.50	
14121.00	89.600	162.000	6161.26	7064.75	-7402.81	241.78	1638585.31	14307886.97	39°24'3.0794"N	81°00'23.3384"W	7406.76	178.129	0.96	0.13	0.95	
14215.00	89.720	161.390	6161.81	7158.73	-7492.05	271.30	1638614.82	14307797.76	39°24'2.1974"N	81°00'22.9622"W	7496.96	177.926	0.66	0.13	-0.65	
14310.00	89.660	161.630	6162.33	7253.72	-7582.14	301.43	1638644.94	14307707.70	39°24'1.3070"N	81°00'22.5784"W	7588.13	177.723	0.26	-0.06	0.25	
14405.00	89.230	162.280	6163.25	7348.69	-7672.47	330.86	1638674.35	14307617.42	39°24'0.4143"N	81°00'22.2034"W	7679.60	177.531	0.82	-0.45	0.68	
14500.00	89.010	161.510	6164.71	7443.66	-7762.75	360.37	1638703.86	14307527.17	39°23'59.5220"N	81°00'21.8273"W	7771.11	177.342	0.84	-0.23	-0.81	
14594.00	89.570	161.100	6165.87	7537.64	-7851.78	390.50	1638733.98	14307438.17	39°23'58.6420"N	81°00'21.4435"W	7861.49	177.153	0.74	0.60	-0.44	
14689.00	88.920	160.570	6167.12	7632.63	-7941.51	421.69	1638765.15	14307348.48	39°23'57.7552"N	81°00'21.0462"W	7952.70	176.961	0.88	-0.68	-0.56	
14783.00	89.660	159.030	6168.29	7726.61	-8029.72	454.14	1638797.59	14307260.31	39°23'56.8834"N	81°00'20.6327"W	8042.55	176.763	1.82	0.79	-1.64	
14878.00	90.370	159.160	6168.26	7821.58	-8118.46	488.04	1638831.47	14307171.60	39°23'56.0063"N	81°00'20.2008"W	8133.12	176.560	0.76	0.75	0.14	
14973.00	90.150	160.230	6167.83	7916.56	-8207.56	521.00	1638864.43	14307082.54	39°23'55.1258"N	81°00'19.7808"W	8224.08	176.368	1.15	-0.23	1.13	
15067.00	89.140	159.670	6168.42	8010.55	-8295.86	553.23	1638896.64	14306994.28	39°23'54.2531"N	81°00'19.3703"W	8314.29	176.185	1.23	-1.07	-0.60	
15162.00	88.800	159.360	6170.12	8105.52	-8384.84	586.47	1638929.87	14306905.33	39°23'53.3737"N	81°00'18.9468"W	8405.32	175.999	0.48	-0.36	-0.33	
15257.00	89.940	159.560	6171.17	8200.49	-8473.79	619.80	1638963.18	14306816.42	39°23'52.4945"N	81°00'18.5221"W	8496.43	175.817	1.22	1.20	0.21	
15351.00	89.510	159.610	6171.62	8294.47	-8561.89	652.59	1638995.96	14306728.36	39°23'51.6239"N	81°00'18.1044"W	8586.72	175.641	0.46	-0.46	0.05	
15446.00	89.850	158.870	6172.15	8389.44	-8650.72	686.26	1639029.62	14306639.56	39°23'50.7459"N	81°00'17.6754"W	8677.89	175.464	0.86	0.36	-0.78	
15540.00	89.600	159.760	6172.60	8483.41	-8738.65	719.46	1639062.80	14306551.66	39°23'49.8768"N	81°00'17.2524"W	8768.22	175.293	0.98	-0.27	0.95	
15635.00	89.540	159.470	6173.31	8578.39	-8827.70	752.55	1639095.88	14306462.65	39°23'48.9967"N	81°00'16.8309"W	8859.72	175.127	0.31	-0.06	-0.31	
15729.00	90.000	159.790	6173.69	8672.38	-8915.82	785.27	1639128.59	14306374.56	39°23'48.1258"N	81°00'16.4140"W	8950.34	174.967	0.60	0.49	0.34	
15824.00	89.320	160.410	6174.26	8767.37	-9005.15	817.81	1639160.91	14306285.27	39°23'47.2430"N	81°00'16.0021"W	9042.19	174.812	0.97	-0.72	0.65	
15918.00	89.630	159.050	6175.12	8861.35	-9093.32	850.17	1639193.46	14306197.14	39°23'46.3715"N	81°00'15.5873"W	9132.98	174.659	1.48	0.33	-1.45	
16012.00	90.430	157.670	6175.07	8955.27	-9180.69	884.84	1639228.11	14306109.80	39°23'45.5080"N	81°00'15.1457"W	9223.23	174.495	1.70	0.85	-1.47	
16107.00	89.600	158.510	6175.04	9050.18	-9268.83	920.28	1639263.54	14306021.70	39°23'44.6369"N	81°00'14.6941"W	9314.40	174.330	1.24	-0.87	0.88	
16201.00	89.820	159.770	6175.52	9144.14	-9356.66	953.76	1639297.00	14305933.90	39°23'43.7688"N	81°00'14.2677"W	9405.15	174.180	1.36	0.23	1.34	
16296.00	89.940	159.970	6175.72	9239.13	-9445.86	986.45	1639329.68	14305844.74	39°23'42.8872"N	81°00'13.8512"W	9497.23	174.038	0.25	0.13	0.21	

RECEIVED
 Office of Oil and Gas
 AUG 21 2023
 WV Department of
 Environmental Protection



Actual Wellpath Report

Trunk Unit 2H AWP Proj: 20237'
Page 8 of 11



REFERENCE WELLPATH IDENTIFICATION			
Operator	ANTERO RESOURCES CORPORATION	Well	Trunk Unit 2H
Field	Tyler	API	47-095-02816-0000
Facility	Wrigley Pad	Wellbore	Trunk Unit 2H AWB
Slot	Slot B		

WELLPATH DATA (222 stations)																
MD [ft]	Inclination [°]	Azimuth [°]	TVD [ft]	Vert Sect [ft]	North [ft]	East [ft]	Grid East [US ft]	Grid North [US ft]	Latitude	Longitude	Closure Dist [ft]	Closure Dir [°]	DLS [°/100ft]	Build Rate [°/100ft]	Turn Rate [°/100ft]	Comments
16391.00	89.660	159.320	6176.05	9334.12	-9534.93	1019.49	1639362.71	14305755.71	39°23'42.0069"N	81°00'13.4302"W	9589.28	173.897	0.74	-0.29	-0.68	
16485.00	89.690	159.340	6176.58	9428.09	-9622.88	1052.67	1639395.88	14305667.79	39°23'41.1377"N	81°00'13.0076"W	9680.28	173.757	0.04	0.03	0.02	
16580.00	88.800	159.290	6177.83	9523.06	-9711.74	1086.23	1639429.42	14305578.96	39°23'40.2594"N	81°00'12.5801"W	9772.30	173.618	0.94	-0.94	-0.05	
16674.00	88.980	158.520	6179.66	9616.99	-9799.43	1120.05	1639463.23	14305491.31	39°23'39.3928"N	81°00'12.1492"W	9863.23	173.480	0.84	0.19	-0.82	
16769.00	89.050	161.070	6181.29	9711.96	-9888.56	1152.86	1639496.02	14305402.22	39°23'38.5119"N	81°00'11.7314"W	9955.54	173.350	2.68	0.07	2.68	
16864.00	88.680	161.300	6183.17	9806.94	-9978.47	1183.49	1639526.64	14305312.35	39°23'37.6233"N	81°00'11.3411"W	10048.40	173.236	0.46	-0.39	0.24	
17053.00	90.060	162.180	6185.25	9995.89	-10157.93	1242.70	1639585.83	14305132.95	39°23'35.8495"N	81°00'10.5868"W	10233.66	173.025	0.87	0.73	0.47	
17148.00	89.480	162.090	6185.63	10090.85	-10248.35	1271.85	1639614.96	14305042.57	39°23'34.9559"N	81°00'10.2156"W	10326.97	172.926	0.62	-0.61	-0.09	
17243.00	89.480	161.670	6186.49	10185.83	-10338.63	1301.39	1639644.50	14304952.32	39°23'34.0636"N	81°00'9.8392"W	10420.22	172.826	0.44	0.00	-0.44	
17337.00	89.010	161.720	6187.73	10279.80	-10427.87	1330.91	1639674.01	14304863.12	39°23'33.1816"N	81°00'9.4632"W	10512.46	172.727	0.50	-0.50	0.05	
17432.00	89.140	161.710	6189.26	10374.77	-10518.06	1360.71	1639703.80	14304772.97	39°23'32.2902"N	81°00'9.0836"W	10605.71	172.629	0.14	0.14	-0.01	
17527.00	89.050	161.460	6190.76	10469.75	-10608.18	1390.72	1639733.79	14304682.88	39°23'31.3995"N	81°00'8.7013"W	10698.96	172.531	0.28	-0.09	-0.26	
17622.00	89.080	161.420	6192.31	10564.73	-10698.23	1420.95	1639764.01	14304592.87	39°23'30.5095"N	81°00'8.3162"W	10792.19	172.434	0.05	0.03	-0.04	
17716.00	88.860	162.200	6194.00	10658.69	-10787.52	1450.29	1639793.34	14304503.62	39°23'29.6270"N	81°00'7.9425"W	10884.57	172.343	0.86	-0.23	0.83	
17811.00	89.660	161.860	6195.23	10753.66	-10877.88	1479.60	1639822.63	14304413.30	39°23'28.7340"N	81°00'7.5692"W	10978.04	172.254	0.91	0.84	-0.36	
17905.00	89.230	162.170	6196.14	10847.62	-10967.28	1508.62	1639851.65	14304323.93	39°23'27.8504"N	81°00'7.1995"W	11070.55	172.168	0.56	-0.46	0.33	
18000.00	88.680	161.460	6197.87	10942.59	-11057.52	1538.26	1639881.28	14304233.73	39°23'26.9585"N	81°00'6.8219"W	11164.00	172.080	0.95	-0.58	-0.75	
18094.00	88.710	161.370	6200.02	11036.56	-11146.59	1568.22	1639911.22	14304144.69	39°23'26.0781"N	81°00'6.4404"W	11256.37	171.992	0.10	0.03	-0.10	
18189.00	89.570	161.790	6201.44	11131.53	-11236.71	1598.23	1639941.22	14304054.60	39°23'25.1874"N	81°00'6.0581"W	11349.81	171.905	1.01	0.91	0.44	
18284.00	89.750	161.500	6202.01	11226.52	-11326.88	1628.15	1639971.12	14303964.47	39°23'24.2963"N	81°00'5.6771"W	11443.30	171.820	0.36	0.19	-0.31	
18378.00	89.660	161.440	6202.49	11320.50	-11416.01	1658.02	1640000.98	14303875.38	39°23'23.4154"N	81°00'5.2966"W	11535.78	171.736	0.12	-0.10	-0.06	
18473.00	89.510	161.710	6203.18	11415.49	-11506.13	1688.04	1640030.99	14303785.29	39°23'22.5246"N	81°00'4.9141"W	11629.30	171.654	0.33	-0.16	0.28	
18567.00	90.120	161.020	6203.48	11509.48	-11595.20	1718.08	1640061.02	14303696.26	39°23'21.6443"N	81°00'4.5316"W	11721.80	171.572	0.98	0.65	-0.73	
18662.00	89.720	161.330	6203.61	11604.48	-11685.12	1748.73	1640091.66	14303606.38	39°23'20.7556"N	81°00'4.1411"W	11815.25	171.489	0.53	-0.42	0.33	
18756.00	90.250	161.600	6203.64	11698.47	-11774.25	1778.61	1640121.53	14303517.29	39°23'19.8747"N	81°00'3.7605"W	11907.83	171.410	0.63	0.56	0.29	
18850.00	90.490	162.010	6203.03	11792.44	-11863.54	1807.97	1640150.87	14303428.03	39°23'18.9922"N	81°00'3.3867"W	12000.52	171.335	0.51	0.26	0.44	
18945.00	89.320	162.020	6203.19	11887.42	-11953.90	1837.30	1640180.19	14303337.71	39°23'18.0991"N	81°00'3.0131"W	12094.27	171.262	1.23	-1.23	0.01	
19039.00	89.660	161.950	6204.03	11981.39	-12043.29	1866.37	1640209.25	14303248.35	39°23'17.2157"N	81°00'2.6428"W	12187.05	171.191	0.37	0.36	-0.07	
19134.00	89.110	160.940	6205.04	12076.37	-12133.34	1896.60	1640239.46	14303158.33	39°23'16.3256"N	81°00'2.2578"W	12280.68	171.116	1.21	-0.58	-1.06	
19229.00	89.050	162.170	6206.57	12171.34	-12223.45	1926.65	1640269.50	14303068.26	39°23'15.4350"N	81°00'1.8751"W	12374.36	171.043	1.30	-0.06	1.29	

RECEIVED
Office of Oil and Gas
AUG 21 2023
WV Department of
Environmental Protection



Actual Wellpath Report

Trunk Unit 2H AWP Proj: 20237'
Page 9 of 11



REFERENCE WELLPATH IDENTIFICATION			
Operator	ANTERO RESOURCES CORPORATION	Well	Trunk Unit 2H
Field	Tyler	API	47-095-02816-0000
Facility	Wrigley Pad	Wellbore	Trunk Unit 2H AWP
Slot	Slot B		

WELLPATH DATA (222 stations) † = interpolated, ‡ = extrapolated station																
MD [ft]	Inclination [°]	Azimuth [°]	TVD [ft]	Vert Sect [ft]	North [ft]	East [ft]	Grid East [US ft]	Grid North [US ft]	Latitude	Longitude	Closure Dist [ft]	Closure Dir [°]	DLS ["/100ft]	Build Rate ["/100ft]	Turn Rate ["/100ft]	Comments
19323.00	89.050	159.700	6208.13	12265.32	-12312.27	1957.35	1640300.19	14302979.48	39°23'14.5571"N	81°00'1.4841"W	12466.89	170.967	2.63	0.00	-2.63	
19418.00	89.630	160.530	6209.22	12360.31	-12401.60	1989.66	1640332.49	14302890.18	39°23'13.6742"N	81°00'1.0726"W	12560.19	170.885	1.07	0.61	0.87	
19512.00	89.510	161.000	6209.93	12454.31	-12490.35	2020.62	1640363.44	14302801.47	39°23'12.7971"N	81°00'0.6782"W	12652.74	170.811	0.52	-0.13	0.50	
19607.00	89.880	160.480	6210.43	12549.31	-12580.03	2051.96	1640394.76	14302711.82	39°23'11.9107"N	81°00'0.2791"W	12746.28	170.736	0.67	0.39	-0.55	
19702.00	89.230	160.680	6211.17	12644.30	-12669.63	2083.54	1640426.34	14302622.27	39°23'11.0252"N	80°59'59.8768"W	12839.80	170.661	0.72	-0.68	0.21	
19797.00	88.920	160.670	6212.71	12739.29	-12759.26	2114.98	1640457.76	14302532.67	39°23'10.1393"N	80°59'59.4764"W	12933.36	170.588	0.33	-0.33	-0.01	
19891.00	90.030	160.900	6213.57	12833.28	-12848.02	2145.91	1640488.68	14302443.95	39°23'9.2621"N	80°59'59.0825"W	13025.99	170.518	1.21	1.18	0.24	
19986.00	89.380	160.360	6214.06	12928.28	-12937.64	2177.42	1640520.18	14302354.36	39°23'8.3763"N	80°59'58.6812"W	13119.59	170.447	0.89	-0.68	-0.57	
20081.00	89.420	161.500	6215.05	13023.27	-13027.42	2208.46	1640551.20	14302264.62	39°23'7.4889"N	80°59'58.2859"W	13213.29	170.378	1.20	0.04	1.20	
20175.00	88.580	160.080	6216.69	13117.26	-13116.17	2239.38	1640582.11	14302175.90	39°23'6.6118"N	80°59'57.8921"W	13305.97	170.311	1.75	-0.89	-1.51	
20212.00	90.180	161.020	6217.09	13154.25	-13151.05	2251.70	1640594.42	14302141.03	39°23'6.2670"N	80°59'57.7352"W	13342.43	170.284	5.02	4.32	2.54	
20237.00‡	90.180	161.020	6217.01	13179.25	-13174.69	2259.83	1640602.55	14302117.40	39°23'6.0333"N	80°59'57.6317"W	13367.10	170.267	0.00	0.00	0.00	Projected MD at TD: 20237'

HOLE & CASING SECTIONS - Ref Wellbore: Trunk Unit 2H AWP Proj: 20237'									
String/Diameter	Start MD [ft]	End MD [ft]	Interval [ft]	Start TVD [ft]	End TVD [ft]	Start N/S [ft]	Start E/W [ft]	End N/S [ft]	End E/W [ft]
20in Conductor	30.00	130.00	100.00	30.00	130.00	0.00	0.00	-0.16	0.38
17.5in Open Hole	130.00	627.00	497.00	130.00	626.99	-0.16	0.38	-1.76	2.36
13.375in Casing Surface	30.00	607.00	577.00	30.00	606.99	0.00	0.00	-1.69	2.30
12.25in Open Hole	627.00	3478.00	2851.00	626.99	3252.34	-1.76	2.36	19.93	-1018.42
9.625in Casing Intermediate	30.00	3450.00	3420.00	30.00	3226.90	0.00	0.00	19.70	-1006.73
8.75in Open Hole	3478.00	5797.00	2319.00	3252.34	5309.62	19.93	-1018.42	30.09	-2085.62
8.5in Open Hole	5797.00	20237.00	14440.00	5309.62	6217.01	30.09	-2085.62	-13174.69	2259.83
5.5in Casing Production	30.00	20217.00	20187.00	30.00	6217.08	0.00	0.00	-13155.78	2253.33

RECEIVED
 Office of Oil and Gas
 AUG 21 2023
 WV Department of
 Environmental Protection



Actual Wellpath Report

Trunk Unit 2H AWP Proj: 20237'
Page 10 of 11



REFERENCE WELLPATH IDENTIFICATION			
Operator	ANTERO RESOURCES CORPORATION	Well	Trunk Unit 2H
Field	Tyler	API	47-095-02816-0000
Facility	Wrigley Pad	Wellbore	Trunk Unit 2H AWB
Slot	Slot B		

TARGETS								
Name	TVD [ft]	North [ft]	East [ft]	Grid East [US ft]	Grid North [US ft]	Latitude	Longitude	Shape
Trunk Unit 2H POE Rev-3	6062.00	-484.97	-2179.14	1636165.37	14314802.02	39°25'11.4490"N	81°00'54.1923"W	point
Trunk Unit 2H LP Rev-3	6111.00	-727.11	-2094.10	1636250.37	14314559.98	39°25'9.0560"N	81°00'53.1083"W	point
Trunk Unit 2H BHL Rev-3	6179.93	-13148.15	2268.00	1640610.72	14302143.94	39°23'6.2957"N	80°59'57.5276"W	point
Trunk Unit 2H 50' L/R Hard Line	6250.00	-6816.56	44.43	1638388.05	14308472.98	39°24'8.8734"N	81°00'25.8529"W	rectangle
2D Rectangle 13421.4 x 100.								

WELLPATH COMPOSITION - Ref Wellbore: Trunk Unit 2H AWB Ref Wellpath: Trunk Unit 2H AWP Proj: 20237'					
Start MD [ft]	End MD [ft]	Positional Uncertainty Model	Log Name/Comment	Wellbore	Survey Date
30.00	550.00	Gyrodatta 2015 - GC+WIR+DPIPE	01 Gyrodatta MS Gyro <17-1/2"> (100'-550')	Trunk Unit 2H AWB	1/15/2023
550.00	3405.00	BH NaviTrak (2019) (Axial Corr+HRGM)	02 APS EM <12-1/4"> (550')(683'-3405')	Trunk Unit 2H AWB	1/15/2023
3405.00	5720.00	BH NaviTrak (2019) (Axial Corr+HRGM)	03 APS EM <8-3/4"> (3405')(3500'-5720')	Trunk Unit 2H AWB	3/3/2023
5720.00	20237.00	BH AutoTrak Curve/eXpress (2019) (HRGM, Short spacing)	04 BH AT Curve <8-1/2"> (5720')(5782'-20212')	Trunk Unit 2H AWB	3/3/2023

RECEIVED
 Office of Oil and Gas
 AUG 21 2023
 WV Department of
 Environmental Protection



Actual Wellpath Report

Trunk Unit 2H AWP Proj: 20237'
Page 11 of 11



REFERENCE WELLPATH IDENTIFICATION			
Operator	ANTERO RESOURCES CORPORATION	Well	Trunk Unit 2H
Field	Tyler	API	47-095-02816-0000
Facility	Wrigley Pad	Wellbore	Trunk Unit 2H AWB
Slot	Slot B		

COMMENTS
<p>Wellpath general comments API: 47-095-02816-0000 BH Job #: 111653830 Rig: H&P 531 Duration: 3/6/2023-3/10/2023 Gyrodata MS Gyro <17-1/2"> (100'-550') APS EM <12-1/4"> (550')(683'-3405') APS EM <8-3/4"> (3405')(3500'-5720') BH AT Curve <8-1/2"> (5720')(5782'-20212') Sycamore: 6441' MD Middlesex: 6580' MD Burkett: 6733' MD Marcellus POE: 6791' MD Projected MD at TD: 20237'</p>

RECEIVED
Office of Oil and Gas
AUG 21 2023
WV Department of
Environmental Protection