



# ANTERO RESOURCES CORPORATION

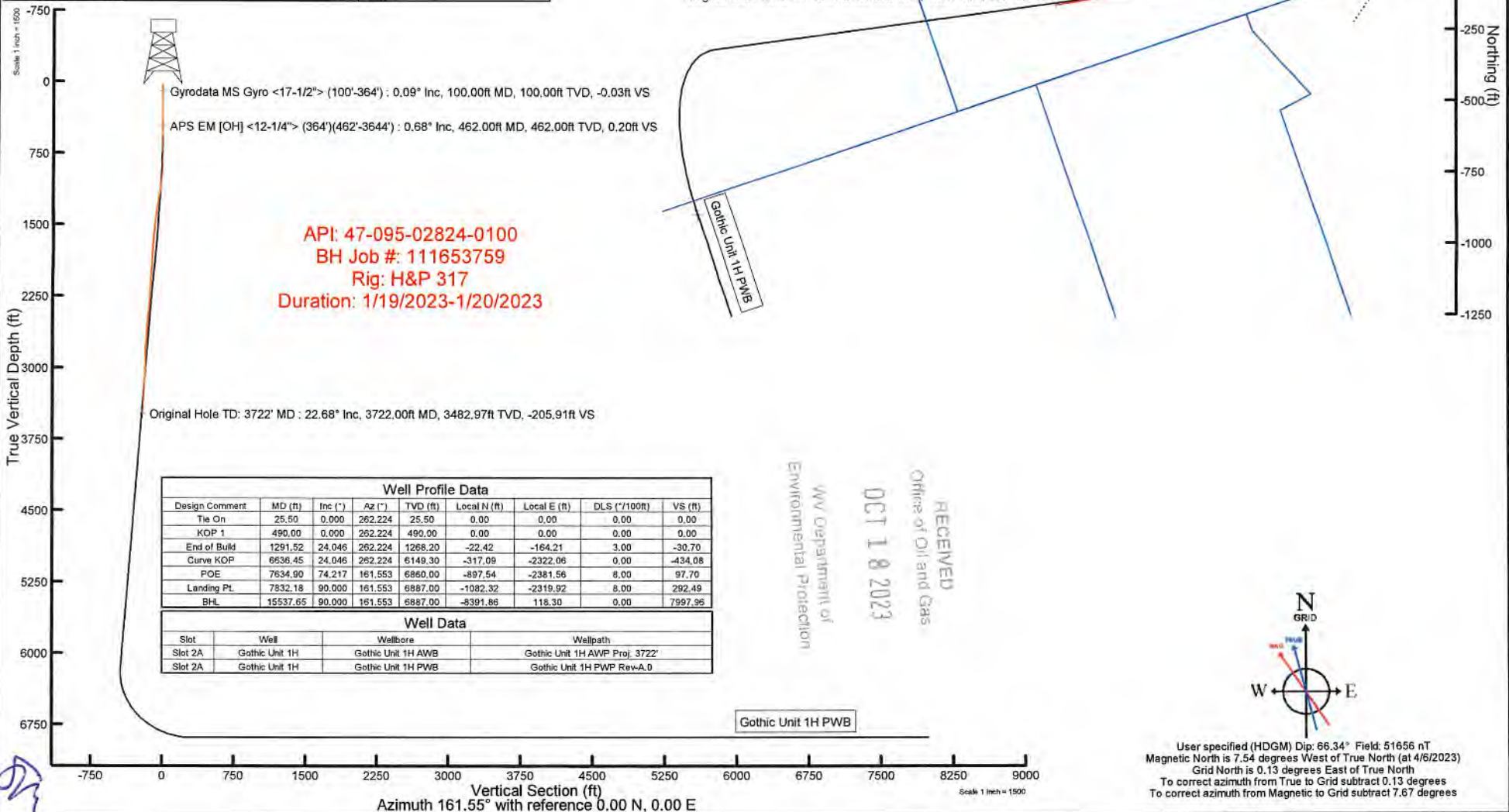
Location: Tyler County, WV  
Field: Tyler  
Facility: Thin Air Pad

Slot: Slot 2A  
Well: Gothic Unit 1H  
Wellbore: Gothic Unit 1H PWB



First reference wellbore is Gothic Unit 1H PWP Rev-A.0	Grid System: NAD2011 UTM Zone 17 North, US feet
True vertical depths are referenced to H&P 317 (RKB)	North Reference: Grid north
Reference wellbore measured depths are referenced to H&P 317 (RKB)	Scale: True distance
H&P 317 (RKB) to Mean Sea Level: 1225.5 feet	Coordinates are in feet referenced to NAD
Mean Sea Level to Ground level (At Slot: Slot 2A) = -1200 feet	Depths are in feet
Other wellbore MDs are referenced to each path's default MD datum	Created by: edstaryan on 2023/04/22, Database: WA_MPL_EASTERNUS_Dept

Location Information					
Facility Name	Grid East (US ft)	Grid North (US ft)	Latitude	Longitude	
Thin Air Pad	1696787.140	14354225.910	39°31'40.5880"N	80°47'34.7850"W	
Slot	Local N (ft)	Local E (ft)	Grid North (US ft)	Longitude	
Slot 2A	147.05	59.70	1698843.820	14354372.900 39°31'42.0400"N 80°47'34.0570"W	
Comment: Gothic Unit 1H					
H&P 317 (RKB) to Ground level (At Slot: Slot 2A)			25.5ft		
Mean Sea Level to Ground level (At Slot: Slot 2A)			-1200ft		
H&P 317 (RKB) to Mean Sea Level			1225.5ft		



Well Profile Data								
Design Comment	MD (ft)	Inc (")	Az (°)	TVD (ft)	Local N (ft)	Local E (ft)	DLS (°/100ft)	VS (ft)
Tie On	25.50	0.000	262.224	25.50	0.00	0.00	0.00	0.00
KOP 1	490.00	0.000	262.224	490.00	0.00	0.00	0.00	0.00
End of Build	1291.52	24.046	262.224	1268.20	-22.42	-164.21	3.00	-30.70
Curve KOP	6636.45	24.046	262.224	6149.30	-317.09	-2322.06	0.00	-434.08
POE	7634.90	74.217	161.553	6860.00	-897.54	-2381.56	8.00	97.70
Landing Pt.	7832.18	90.000	161.553	6887.00	-1082.32	-2319.92	8.00	292.49
BHL	15537.65	90.000	161.553	6887.00	-8391.86	118.30	0.00	7997.96

Well Data			
Slot	Well	Wellbore	Wellpath
Slot 2A	Gothic Unit 1H	Gothic Unit 1H AWB	Gothic Unit 1H AWP Proj. 3722'
Slot 2A	Gothic Unit 1H	Gothic Unit 1H PWB	Gothic Unit 1H PWP Rev-A.0

User specified (HDGM) Dip: 66.34° Field: 51656 nT  
Magnetic North is 7.54 degrees West of True North (at 4/6/2023)  
Grid North is 0.13 degrees East of True North  
To correct azimuth from True to Grid subtract 0.13 degrees  
To correct azimuth from Magnetic to Grid subtract 7.67 degrees



# Actual Wellpath Report

Gothic Unit 1H AWP Proj: 3722'

Page 1 of 5



REFERENCE WELLPATH IDENTIFICATION			
Operator	ANTERO RESOURCES CORPORATION	Well	Gothic Unit 1H
Field	Tyler	API	47-095-02824-0100
Facility	Thin Air Pad	Wellbore	Gothic Unit 1H AWB
Slot	Slot 2A		

REPORT SETUP INFORMATION			
Projection System	NAD27 / UTM Zone 17 North, US feet	Software System	WellArchitect® 6.0
North Reference	Grid	User	Edsaryar
Scale	0.999604	Report Generated	4/22/2023 at 9:04:18 PM
Convergence at slot	0.13° East	Database	WA_MPL_EASTERNUS_Defn

WELLPATH LOCATION						
	Local coordinates		Grid coordinates		Geographic coordinates	
	North[ft]	East[ft]	Easting[US ft]	Northing[US ft]	Latitude	Longitude
Slot Location	147.05	56.70	1698843.82	14354372.90	39°31'42.0400"N	80°47'34.0570"W
Facility Reference Pt			1698787.14	14354225.91	39°31'40.5880"N	80°47'34.7850"W
Field Reference Pt			0.00	0.00	0°00'0.0000"	85°29'19.3013"W

WELLPATH DATUM			
Calculation method	Minimum curvature	H&P 317 (RKB) to Facility Vertical Datum	1225.50ft
Horizontal Reference Pt	Slot	H&P 317 (RKB) to Mean Sea Level	1225.50ft
Vertical Reference Pt	H&P 317 (RKB)	H&P 317 (RKB) to Ground Level at Slot (Slot 2A)	25.50ft
MD Reference Pt	H&P 317 (RKB)	Section Origin	N 0.00, E 0.00 ft
Field Vertical Reference	Mean Sea Level	Section Azimuth	161.55°

RECEIVED  
 Office of Oil and Gas  
 OCT 18 2023  
 WV Department of  
 Environmental Protection



# Actual Wellpath Report

Gothic Unit 1H AWP Proj: 3722'

Page 2 of 5



REFERENCE WELLPATH IDENTIFICATION			
Operator	ANTERO RESOURCES CORPORATION	Well	Gothic Unit 1H
Field	Tyler	API	47-095-02824-0100
Facility	Thin Air Pad	Wellbore	Gothic Unit 1H AWB
Slot	Slot 2A		

WELLPATH DATA (43 stations) † = interpolated, ‡ = extrapolated station																
MD [ft]	Inclination [°]	Azimuth [°]	TVD [ft]	Vert Sect [ft]	North [ft]	East [ft]	Grid East [US ft]	Grid North [US ft]	Latitude	Longitude	Closure Dist [ft]	Closure Dir [°]	DLS ["/100ft]	Build Rate ["/100ft]	Turn Rate ["/100ft]	
0.00†	0.000	283.500	0.00	0.00	0.00	0.00	1698843.82	14354372.90	39°31'42.0400"N	80°47'34.0570"W	0.00	0.000	0.00	0.00	0.00	
25.50	0.000	283.500	25.50	0.00	0.00	0.00	1698843.82	14354372.90	39°31'42.0400"N	80°47'34.0570"W	0.00	0.000	0.00	0.00	0.00	
100.00	0.090	283.500	100.00	-0.03	0.01	-0.06	1698843.76	14354372.91	39°31'42.0402"N	80°47'34.0577"W	0.06	283.500	0.12	0.12	0.00	
200.00	0.030	42.950	200.00	-0.09	0.05	-0.12	1698843.70	14354372.95	39°31'42.0406"N	80°47'34.0585"W	0.13	293.903	0.11	-0.06	119.45	
300.00	0.080	49.560	300.00	-0.12	0.12	-0.04	1698843.78	14354373.02	39°31'42.0412"N	80°47'34.0576"W	0.12	338.966	0.05	0.05	6.61	
364.00	0.340	42.110	364.00	-0.23	0.29	0.12	1698843.94	14354373.19	39°31'42.0429"N	80°47'34.0555"W	0.31	22.267	0.41	0.41	-11.64	
462.00	0.680	168.330	462.00	0.20	-0.07	0.43	1698844.25	14354372.83	39°31'42.0394"N	80°47'34.0515"W	0.43	99.042	0.94	0.35	128.80	
505.00	0.850	124.990	504.99	0.71	-0.50	0.74	1698844.56	14354372.40	39°31'42.0351"N	80°47'34.0476"W	0.90	124.020	1.36	0.40	-100.79	
594.00	1.830	234.800	593.98	1.65	-1.70	0.12	1698843.94	14354371.20	39°31'42.0232"N	80°47'34.0555"W	1.70	175.895	2.54	1.10	123.38	
684.00	4.000	248.280	683.86	2.24	-3.69	-3.97	1698839.85	14354369.21	39°31'42.0037"N	80°47'34.1078"W	5.42	227.092	2.51	2.41	14.98	
774.00	6.640	257.710	773.46	1.86	-5.96	-11.97	1698831.85	14354366.94	39°31'41.9814"N	80°47'34.2100"W	13.37	243.536	3.08	2.93	10.48	
863.00	9.050	260.100	861.62	0.27	-8.26	-23.90	1698819.93	14354364.65	39°31'41.9590"N	80°47'34.3622"W	25.28	250.936	2.73	2.71	2.69	
953.00	13.080	268.990	949.94	-3.84	-9.66	-41.06	1698802.78	14354363.25	39°31'41.9456"N	80°47'34.5813"W	42.18	256.767	4.85	4.48	9.88	
1042.00	16.920	272.210	1035.89	-11.43	-9.33	-64.08	1698779.77	14354363.57	39°31'41.9493"N	80°47'34.8751"W	64.76	261.713	4.41	4.31	3.62	
1137.00	19.560	273.530	1126.11	-22.26	-7.82	-93.77	1698750.09	14354365.08	39°31'41.9649"N	80°47'35.2539"W	94.10	265.232	2.81	2.78	1.39	
1231.00	22.480	274.860	1213.85	-35.26	-5.33	-127.39	1698716.48	14354367.57	39°31'41.9903"N	80°47'35.6829"W	127.50	267.605	3.15	3.11	1.41	
1326.00	24.900	273.950	1300.83	-50.07	-2.41	-165.44	1698678.44	14354370.49	39°31'42.0200"N	80°47'36.1685"W	165.46	269.165	2.58	2.55	-0.96	
1421.00	25.380	270.530	1386.84	-64.32	-0.85	-205.76	1698638.14	14354372.05	39°31'42.0364"N	80°47'36.6829"W	205.76	269.764	1.61	0.51	-3.60	
1515.00	24.630	266.400	1472.04	-75.89	-1.89	-245.45	1698598.46	14354371.01	39°31'42.0269"N	80°47'37.1895"W	245.46	269.559	2.02	-0.80	-4.39	
1609.00	24.120	264.860	1557.66	-85.33	-4.84	-284.13	1698559.80	14354368.06	39°31'41.9987"N	80°47'37.6832"W	284.17	269.024	0.87	-0.54	-1.64	
1704.00	23.700	262.290	1644.51	-93.36	-9.14	-322.39	1698521.56	14354363.76	39°31'41.9570"N	80°47'38.1716"W	322.52	268.376	1.18	-0.44	-2.71	
1798.00	23.530	260.370	1730.64	-99.75	-14.81	-359.61	1698484.36	14354358.09	39°31'41.9018"N	80°47'38.6467"W	359.91	267.641	0.84	-0.18	-2.04	
1892.00	23.520	259.220	1816.82	-105.14	-21.46	-396.53	1698447.45	14354351.45	39°31'41.8369"N	80°47'39.1182"W	397.11	266.902	0.49	-0.01	-1.22	
1987.00	24.840	258.880	1903.49	-110.21	-28.86	-434.73	1698409.26	14354344.06	39°31'41.7647"N	80°47'39.6059"W	435.69	266.203	1.40	1.39	-0.36	
2081.00	25.680	258.390	1988.50	-115.16	-36.76	-474.06	1698369.95	14354336.15	39°31'41.6874"N	80°47'40.1080"W	475.48	265.566	0.92	0.89	-0.52	
2175.00	25.550	256.950	2073.26	-119.49	-45.44	-513.76	1698330.27	14354327.48	39°31'41.6026"N	80°47'40.6149"W	515.76	264.946	0.68	-0.14	-1.53	
2269.00	25.370	255.730	2158.13	-122.86	-54.98	-553.02	1698291.02	14354317.94	39°31'41.5092"N	80°47'41.1162"W	555.75	264.322	0.59	-0.19	-1.30	
2364.00	25.640	257.860	2243.88	-126.61	-64.32	-592.84	1698251.21	14354308.61	39°31'41.4178"N	80°47'41.6247"W	596.32	263.808	1.01	0.28	2.24	
2458.00	25.630	262.530	2328.63	-132.72	-71.24	-632.89	1698211.19	14354301.69	39°31'41.3503"N	80°47'42.1359"W	636.88	263.578	2.15	-0.01	4.97	
2553.00	25.870	263.360	2414.20	-140.87	-76.31	-673.84	1698170.24	14354296.62	39°31'41.3011"N	80°47'42.6588"W	678.15	263.539	0.46	0.25	0.87	

RECEIVED  
 Office of Oil and Gas  
 OCT 18 2023  
 WV Department of  
 Environmental Protection



# Actual Wellpath Report

Gothic Unit 1H AWP Proj: 3722'

Page 3 of 5



REFERENCE WELLPATH IDENTIFICATION			
Operator	ANTERO RESOURCES CORPORATION	Well	Gothic Unit 1H
Field	Tyler	API	47-095-02824-0100
Facility	Thin Air Pad	Wellbore	Gothic Unit 1H AWB
Slot	Slot 2A		

WELLPATH DATA (43 stations) † = interpolated, ‡ = extrapolated station															
MD [ft]	Inclination [°]	Azimuth [°]	TVD [ft]	Vert Sect [ft]	North [ft]	East [ft]	Grid East [US ft]	Grid North [US ft]	Latitude	Longitude	Closure Dist [ft]	Closure Dir [°]	DLS [°/100ft]	Build Rate [°/100ft]	Turn Rate [°/100ft]
2647.00	25.380	262.850	2498.95	-149.02	-81.19	-714.20	1698129.90	14354291.75	39°31'41.2538"N	80°47'43.1740"W	718.80	263.515	0.57	-0.52	-0.54
2741.00	25.360	261.120	2583.89	-156.31	-86.80	-754.08	1698090.04	14354286.13	39°31'41.1992"N	80°47'43.6831"W	759.06	263.434	0.79	-0.02	-1.84
2836.00	25.240	259.950	2669.78	-162.65	-93.48	-794.13	1698050.01	14354279.46	39°31'41.1341"N	80°47'44.1943"W	799.61	263.287	0.54	-0.13	-1.23
2932.00	24.830	258.800	2756.76	-168.18	-100.96	-834.05	1698010.10	14354271.98	39°31'41.0610"N	80°47'44.7040"W	840.14	263.098	0.66	-0.43	-1.20
3027.00	24.470	256.740	2843.10	-172.48	-109.35	-872.77	1697971.40	14354263.59	39°31'40.9790"N	80°47'45.1984"W	879.59	262.859	0.98	-0.38	-2.17
3121.00	23.750	256.880	2928.90	-176.00	-118.11	-910.16	1697934.03	14354254.83	39°31'40.8932"N	80°47'45.6758"W	917.79	262.606	0.77	-0.77	0.15
3215.00	22.820	255.550	3015.25	-179.03	-126.96	-946.24	1697897.95	14354245.99	39°31'40.8066"N	80°47'46.1366"W	954.72	262.358	1.14	-0.99	-1.41
3310.00	22.670	258.500	3102.86	-182.53	-135.21	-982.02	1697862.19	14354237.75	39°31'40.7259"N	80°47'46.5934"W	991.29	262.161	1.21	-0.16	3.11
3404.00	22.440	259.250	3189.67	-187.13	-142.16	-1017.40	1697826.82	14354230.79	39°31'40.6579"N	80°47'47.0451"W	1027.29	262.045	0.39	-0.24	0.80
3499.00	22.790	260.480	3277.37	-192.41	-148.59	-1053.36	1697790.88	14354224.37	39°31'40.5952"N	80°47'47.5042"W	1063.79	261.971	0.62	0.37	1.29
3593.00	22.920	261.300	3363.99	-198.34	-154.37	-1089.41	1697754.84	14354218.59	39°31'40.5389"N	80°47'47.9644"W	1100.29	261.935	0.37	0.14	0.87
3644.00	22.680	260.040	3411.00	-201.47	-157.57	-1108.91	1697735.35	14354215.39	39°31'40.5077"N	80°47'48.2134"W	1120.05	261.913	1.07	-0.47	-2.47
3722.00‡	22.680	260.040	3482.97	-205.91	-162.77	-1138.53	1697705.74	14354210.19	39°31'40.4570"N	80°47'48.5916"W	1150.11	261.864	0.00	0.00	0.00

HOLE & CASING SECTIONS - Ref Wellbore: Gothic Unit 1H AWB Ref Wellpath: Gothic Unit 1H AWP Proj: 3722'									
String/Diameter	Start MD [ft]	End MD [ft]	Interval [ft]	Start TVD [ft]	End TVD [ft]	Start N/S [ft]	Start E/W [ft]	End N/S [ft]	End E/W [ft]
20in Conductor	25.50	126.00	100.50	25.50	126.00	0.00	0.00	0.02	-0.09
17.5in Open Hole	126.00	463.00	337.00	126.00	463.00	0.02	-0.09	-0.08	0.43
13.375in Casing Surface	25.50	443.00	417.50	25.50	443.00	0.00	0.00	0.12	0.38
12.25in Open Hole	463.00	3722.00	3259.00	463.00	3482.97	-0.08	0.43	-162.77	-1138.53
9.625in Casing Intermediate	1300.00	1400.00	100.00	1277.19	1367.86	-3.18	-154.66	-0.99	-196.78

RECEIVED  
 Office of Oil and Gas  
 OCT 18 2023  
 WV Department of  
 Environmental Protection



# Actual Wellpath Report

Gothic Unit 1H AWP Proj: 3722'

Page 4 of 5



REFERENCE WELLPATH IDENTIFICATION			
Operator	ANTERO RESOURCES CORPORATION	Well	Gothic Unit 1H
Field	Tyler	API	47-095-02824-0100
Facility	Thin Air Pad	Wellbore	Gothic Unit 1H AWB
Slot	Slot 2A		

TARGETS									
Name	TVD [ft]	North [ft]	East [ft]	Grid East [US ft]	Grid North [US ft]	Latitude	Longitude	Shape	
Gothic Unit 1H POE Rev-2	6860.00	-897.54	-2381.56	1696463.21	14353475.72	39°31'33.2225"N	80°48'4.4755"W	point	
Gothic Unit 1H BHL Rev-2	6887.00	-8391.86	118.30	1698962.07	14345984.38	39°30'19.0980"N	80°47'32.7942"W	point	
Gothic Unit 1H 50' L/R Hard Line	7000.00	-4644.70	-1131.63	1697712.64	14349730.05	39°30'56.1606"N	80°47'48.6325"W	rectangle	2D Rectangle 7900.26 x 100.

WELLPATH COMPOSITION - Ref Wellbore: Gothic Unit 1H AWB Ref Wellpath: Gothic Unit 1H AWP Proj: 3722'					
Start MD [ft]	End MD [ft]	Positional Uncertainty Model	Log Name/Comment	Wellbore	Survey Date
25.50	364.00	Gyrodata 2015 - GC+WIR+DPIPE	01 Gyrodata MS Gyro <17-1/2"> (100'-364')	Gothic Unit 1H AWB	1/11/2023
364.00	3722.00	BH NaviTrak (2019) (Axial Corr+HRGM)	02 APS EM <12-1/4"> (364')(462'-3644')	Gothic Unit 1H AWB	1/11/2023

RECEIVED  
 Office of Oil and Gas  
 OCT 18 2023  
 WV Department of  
 Environmental Protection



# Actual Wellpath Report

Gothic Unit 1H AWP Proj: 3722'

Page 5 of 5



REFERENCE WELLPATH IDENTIFICATION			
Operator	ANTERO RESOURCES CORPORATION	Well	Gothic Unit 1H
Field	Tyler	API	47-095-02824-0100
Facility	Thin Air Pad	Wellbore	Gothic Unit 1H AWB
Slot	Slot 2A		

COMMENTS
<p><b>Wellpath general comments</b> API: 47-095-02824-0100 BH Job #: 111653759 Rig: H&amp;P 317 Duration: 1/19/2023-1/20/2023 Gyrodatta MS Gyro &lt;17-1/2"&gt; (100'-364') APS EM &lt;12-1/4"&gt; (364')(462'-3644') Original Hole TD: 3722' MD</p>

RECEIVED  
Office of Oil and Gas  
OCT 18 2023  
WV Department of  
Environmental Protection



# ANTERO RESOURCES CORPORATION

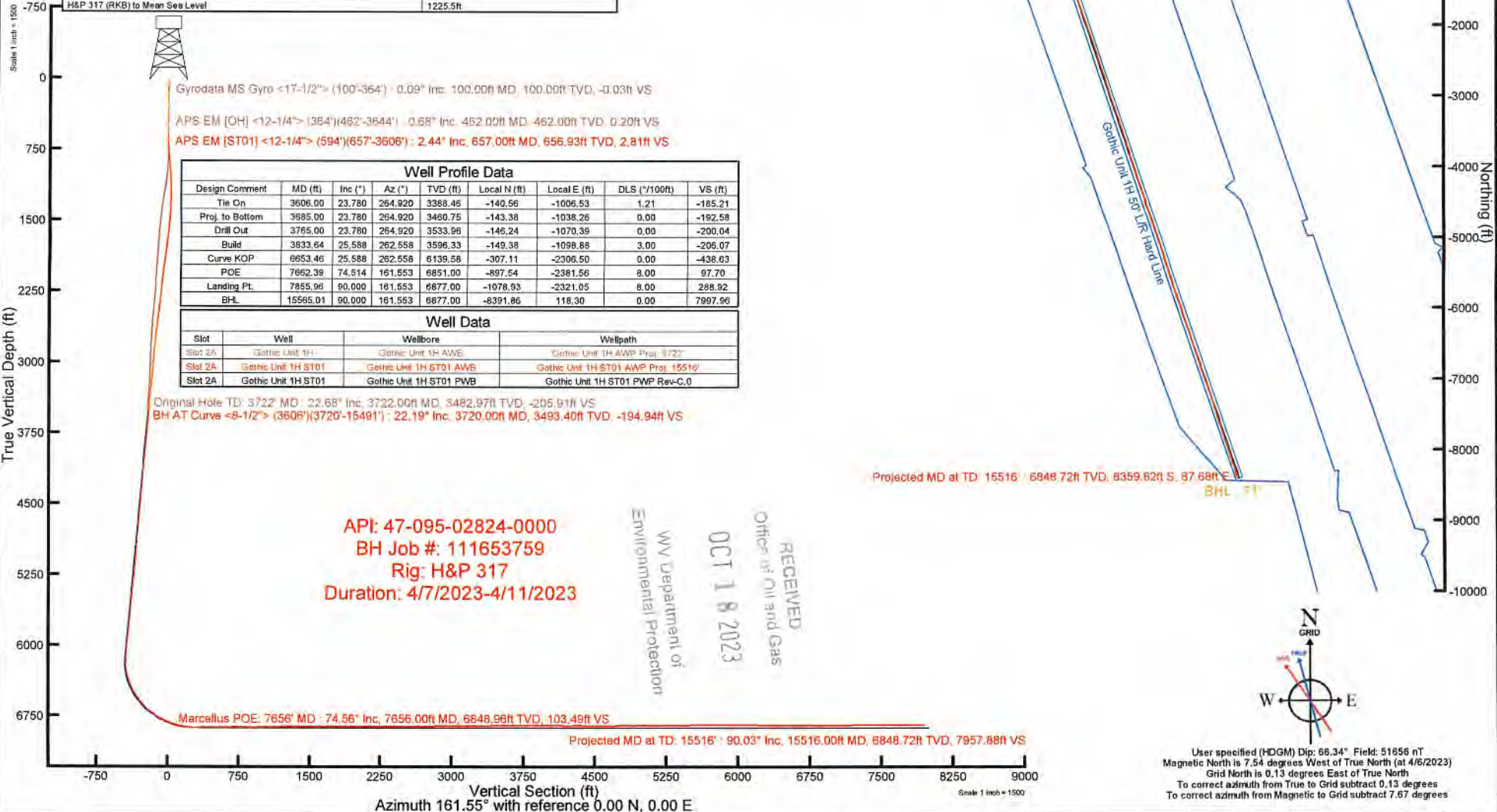


Location: Tyler County, WV  
Field: Tyler  
Facility: Thin Air Pad

Slot: Slot 2A  
Well: Gothic Unit 1H ST01  
Wellbore: Gothic Unit 1H ST01 PWB

Pit reference wellpath is Gothic Unit 1H ST01 PWP Rev-C.0	Grid System: NAD27 / UTM Zone 17 North, US feet
True vertical depths are referenced to H&P 317 (RKB)	North Reference: Grid north
Reference wellpath measured depths are referenced to H&P 317 (RKB)	Scale: True distance
H&P 317 (RKB) to Mean Sea Level: 1225.5 feet	Coordinates are in feet referenced to Slot
Mean Sea Level to Ground level (At Slot 2A): -1200 feet	Depths are in feet
Offset wellpath MDs are referenced to each path's default MD datum	Created by: reidmeyer on 2023-04-27; Database: WA MPL_EASTERNUS_Data

Location Information				
Facility Name	Grid East (US ft)	Grid North (US ft)	Latitude	Longitude
Thin Air Pad	1698787.140	14354225.910	39°31'40.5880"N	80°47'34.7850"W
Slot	Local N (ft)	Local E (ft)	Grid East (US ft)	Grid North (US ft)
Slot 2A	147.05	56.70	1698843.820	14354372.900
Comment	Gothic Unit 1H			
H&P 317 (RKB) to Ground level (At Slot: Slot 2A)	25.5ft			
Mean Sea Level to Ground level (At Slot: Slot 2A)	-1200ft			
H&P 317 (RKB) to Mean Sea Level	1225.5ft			



Gyrodata MS Gyro <17-1/2"> (100'-364') · 0.09° Inc. 100.00ft MD, 100.00ft TVD, -0.03ft VS  
 APS EM [OH] <12-1/4"> (364')(462'-3644') · 0.68° Inc. 462.00ft MD, 462.00ft TVD, 0.20ft VS  
 APS EM [ST01] <12-1/4"> (594')(657'-3606') · 2.44° Inc. 657.00ft MD, 656.93ft TVD, 2.81ft VS

Well Profile Data							
Design Comment	MD (ft)	Inc (")	Az (")	TVD (ft)	Local N (ft)	Local E (ft)	VS (ft)
Tie On	3606.00	23.780	264.920	3388.46	-140.56	-1006.53	1.21
Proj. to Bottom	3985.00	23.780	264.920	3460.75	-143.38	-1038.26	0.00
Drill Out	3765.00	23.780	264.920	3533.96	-146.24	-1070.39	0.00
Build	3833.64	25.588	262.558	3596.33	-149.38	-1098.86	3.00
Curve KOP	6953.46	25.588	262.558	6139.58	-307.11	-2306.50	0.00
POE	7862.39	74.514	161.553	6851.00	-897.54	-2381.56	8.00
Landing Pt.	7855.96	90.000	161.553	6877.00	-1078.93	-2321.05	8.00
BHL	15565.01	90.000	161.553	6877.00	-8391.86	118.30	0.00

Well Data			
Slot	Well	Wellbore	Wellpath
Slot 2A	Gothic Unit 1H	Gothic Unit 1H AWE	Gothic Unit 1H AWP Proj. 3722'
Slot 2A	Gothic Unit 1H ST01	Gothic Unit 1H ST01 AWE	Gothic Unit 1H ST01 AWP Proj. 15516'
Slot 2A	Gothic Unit 1H ST01	Gothic Unit 1H ST01 PWB	Gothic Unit 1H ST01 PWP Rev-C.0

Original Hole TD: 3722' MD · 22.68° Inc. 3722.00ft MD, 3482.97ft TVD, -205.91ft VS  
 BH AT Curve <8-1/2"> (3606')(3720'-15491') · 22.19° Inc. 3720.00ft MD, 3493.40ft TVD, -194.94ft VS

Projected MD at TD: 15516' · 6948.72ft TVD, 8359.82ft S, 87.68ft E  
 BHL 71'

API: 47-095-02824-0000  
 BH Job #: 111653759  
 Rig: H&P 317  
 Duration: 4/7/2023-4/11/2023

RECEIVED  
 Office of Oil and Gas  
 OCT 18 2023  
 WV Department of  
 Environmental Protection

Marcellus POE: 7656' MD · 74.56° Inc. 7656.00ft MD, 6848.96ft TVD, 103.49ft VS

Projected MD at TD: 15516' · 90.03° Inc. 15516.00ft MD, 6848.72ft TVD, 7957.88ft VS

GRID  
 N  
 E  
 W  
 User specified (HDGM) Dip: 66.34° Field: 51656 nT  
 Magnetic North is 7.54 degrees West of True North (at 4/6/2023)  
 Grid North is 0.13 degrees East of True North  
 To correct azimuth from True to Grid subtract 0.13 degrees  
 To correct azimuth from Magnetic to Grid subtract 7.67 degrees



# Actual Wellpath Report

Gothic Unit 1H ST01 AWP Proj: 15516'  
Page 1 of 10



REFERENCE WELLPATH IDENTIFICATION			
Operator	ANTERO RESOURCES CORPORATION	Well	Gothic Unit 1H ST01
Field	Tyler	API	47-095-02824-0000
Facility	Thin Air Pad	Wellbore	Gothic Unit 1H ST01 AWB
Slot	Slot 2A	Sidetrack from	Gothic Unit 1H AWP Proj: 3722' at 594.00 MD

REPORT SETUP INFORMATION			
Projection System	NAD27 / UTM Zone 17 North, US feet	Software System	WellArchitect® 6.0
North Reference	Grid	User	Edsaryar
Scale	0.999604	Report Generated	4/27/2023 at 9:59:33 AM
Convergence at slot	0.13° East	Database	WA_MPL_EASTERNUS_Defn

WELLPATH LOCATION						
	Local coordinates		Grid coordinates		Geographic coordinates	
	North[ft]	East[ft]	Easting[US ft]	Northing[US ft]	Latitude	Longitude
Slot Location	147.05	56.70	1698843.82	14354372.90	39°31'42.0400"N	80°47'34.0570"W
Facility Reference Pt			1698787.14	14354225.91	39°31'40.5880"N	80°47'34.7850"W
Field Reference Pt			0.00	0.00	0°00'0.0000"	85°29'19.3013"W

WELLPATH DATUM			
Calculation method	Minimum curvature	H&P 317 (RKB) to Facility Vertical Datum	1225.50ft
Horizontal Reference Pt	Slot	H&P 317 (RKB) to Mean Sea Level	1225.50ft
Vertical Reference Pt	H&P 317 (RKB)	H&P 317 (RKB) to Ground Level at Slot (Slot 2A)	25.50ft
MD Reference Pt	H&P 317 (RKB)	Section Origin	N 0.00, E 0.00 ft
Field Vertical Reference	Mean Sea Level	Section Azimuth	161.55°





# Actual Wellpath Report

Gothic Unit 1H ST01 AWP Proj: 15516'  
Page 2 of 10



REFERENCE WELLPATH IDENTIFICATION			
Operator	ANTERO RESOURCES CORPORATION	Well	Gothic Unit 1H ST01
Field	Tyler	API	47-095-02824-0000
Facility	Thin Air Pad	Wellbore	Gothic Unit 1H ST01 AWB
Slot	Slot 2A	Sidetrack from	Gothic Unit 1H AWP Proj: 3722' at 594.00 MD

WELLPATH DATA (174 stations) † = interpolated, ‡ = extrapolated station																
MD (ft)	Inclination (°)	Azimuth (°)	TVD (ft)	Vert Sect (ft)	North (ft)	East (ft)	Grid East [US ft]	Grid North [US ft]	Latitude	Longitude	Closure Dist (ft)	Closure Dir (°)	DLS (°/100ft)	Build Rate (°/100ft)	Turn Rate (°/100ft)	Comments
0.00†	0.000	283.500	0.00	0.00	0.00	0.00	1698843.82	14354372.90	39°31'42.0400"N	80°47'34.0570"W	0.00	0.000	0.00	0.00	0.00	
25.50	0.000	283.500	25.50	0.00	0.00	0.00	1698843.82	14354372.90	39°31'42.0400"N	80°47'34.0570"W	0.00	0.000	0.00	0.00	0.00	
100.00	0.090	283.500	100.00	-0.03	0.01	-0.06	1698843.76	14354372.91	39°31'42.0402"N	80°47'34.0577"W	0.06	283.500	0.12	0.12	0.00	Gyrodata MS Gyro <17-1/2"> (100'-364')
200.00	0.030	42.950	200.00	-0.09	0.05	-0.12	1698843.70	14354372.95	39°31'42.0406"N	80°47'34.0585"W	0.13	293.903	0.11	-0.06	119.45	
300.00	0.080	49.560	300.00	-0.12	0.12	-0.04	1698843.78	14354373.02	39°31'42.0412"N	80°47'34.0576"W	0.12	338.966	0.05	0.05	6.61	
364.00	0.340	42.110	364.00	-0.23	0.29	0.12	1698843.94	14354373.19	39°31'42.0429"N	80°47'34.0555"W	0.31	22.267	0.41	0.41	-11.64	
462.00	0.680	168.330	462.00	0.20	-0.07	0.43	1698844.25	14354372.83	39°31'42.0394"N	80°47'34.0515"W	0.43	99.042	0.94	0.35	128.80	APS EM [OH] <12-1/4"> (364')(462'-3644')
505.00	0.850	124.990	504.99	0.71	-0.50	0.74	1698844.56	14354372.40	39°31'42.0351"N	80°47'34.0476"W	0.90	124.020	1.36	0.40	-100.79	
594.00	1.830	234.800	593.98	1.65	-1.70	0.12	1698843.94	14354371.20	39°31'42.0232"N	80°47'34.0555"W	1.70	175.895	2.54	1.10	123.38	
657.00	2.440	211.080	656.93	2.81	-3.43	-1.39	1698842.43	14354369.47	39°31'42.0062"N	80°47'34.0749"W	3.70	202.109	1.68	0.97	-37.65	APS EM [ST01] <12-1/4"> (594')(657'-3606')
745.00	3.930	179.130	744.80	6.90	-8.05	-2.31	1698841.51	14354364.86	39°31'41.9606"N	80°47'34.0868"W	8.37	196.040	2.57	1.69	-36.31	
835.00	4.500	174.730	834.56	13.28	-14.65	-1.94	1698841.88	14354358.26	39°31'41.8953"N	80°47'34.0822"W	14.78	187.555	0.73	0.63	-4.89	
924.00	4.510	187.390	923.29	19.83	-21.59	-2.07	1698841.75	14354351.31	39°31'41.8267"N	80°47'34.0841"W	21.69	185.481	1.12	0.01	14.22	
1014.00	7.250	217.180	1012.82	26.22	-29.63	-5.96	1698837.86	14354343.28	39°31'41.7473"N	80°47'34.1340"W	30.22	191.374	4.46	3.04	33.10	
1108.00	10.780	237.240	1105.67	31.75	-39.12	-16.94	1698826.88	14354333.80	39°31'41.6538"N	80°47'34.2744"W	42.63	203.419	4.98	3.76	21.34	
1203.00	13.420	255.900	1198.59	33.11	-46.62	-35.12	1698808.72	14354326.30	39°31'41.5801"N	80°47'34.5066"W	58.36	216.991	4.93	2.78	19.64	
1297.00	13.900	260.740	1289.93	30.48	-51.09	-56.84	1698787.00	14354321.83	39°31'41.5364"N	80°47'34.7839"W	76.43	228.050	1.32	0.51	5.15	
1392.00	14.960	259.980	1381.93	26.86	-55.06	-80.18	1698763.67	14354317.86	39°31'41.4977"N	80°47'35.0819"W	97.26	235.522	1.13	1.12	-0.80	
1486.00	19.000	264.380	1471.82	21.68	-58.67	-107.37	1698736.50	14354314.25	39°31'41.4626"N	80°47'35.4290"W	122.35	241.345	4.51	4.30	4.68	
1581.00	23.620	268.020	1560.30	12.84	-60.85	-141.80	1698702.08	14354312.08	39°31'41.4419"N	80°47'35.8684"W	154.30	246.776	5.06	4.86	3.83	
1675.00	25.780	267.620	1645.70	1.84	-62.34	-181.05	1698662.85	14354310.58	39°31'41.4280"N	80°47'36.3693"W	191.48	250.998	2.30	2.30	-0.43	
1769.00	25.590	265.550	1730.41	-8.73	-64.77	-221.71	1698622.20	14354308.16	39°31'41.4049"N	80°47'36.8884"W	230.98	253.715	0.98	-0.20	-2.20	
1864.00	26.260	265.100	1815.85	-18.61	-68.16	-263.10	1698580.82	14354304.77	39°31'41.3724"N	80°47'37.4167"W	271.79	255.477	0.74	0.71	-0.47	
1958.00	26.900	264.760	1899.92	-28.35	-71.87	-305.00	1698538.94	14354301.05	39°31'41.3366"N	80°47'37.9515"W	313.35	256.740	0.70	0.68	-0.36	
2052.00	27.470	263.110	1983.53	-37.55	-76.42	-347.70	1698496.26	14354296.51	39°31'41.2927"N	80°47'38.4966"W	356.00	257.605	1.01	0.61	-1.76	
2146.00	27.740	261.230	2066.84	-45.57	-82.35	-390.85	1698453.13	14354290.58	39°31'41.2350"N	80°47'39.0474"W	399.43	258.101	0.97	0.29	-2.00	
2241.00	27.350	262.950	2151.07	-53.60	-88.40	-434.35	1698409.64	14354284.53	39°31'41.1762"N	80°47'39.6028"W	443.26	258.496	0.93	-0.41	1.81	
2335.00	27.490	264.010	2234.51	-62.55	-93.32	-477.36	1698366.65	14354279.62	39°31'41.1286"N	80°47'40.1518"W	486.40	258.939	0.54	0.15	1.13	
2430.00	27.990	263.010	2318.59	-71.71	-98.32	-521.29	1698322.73	14354274.62	39°31'41.0801"N	80°47'40.7126"W	530.49	259.319	0.72	0.53	-1.05	
2524.00	28.080	264.600	2401.56	-81.09	-103.08	-565.21	1698278.83	14354269.86	39°31'41.0340"N	80°47'41.2732"W	574.54	259.664	0.80	0.10	1.69	

RECEIVED  
 Office of Oil and Gas  
 Environmental Protection  
 WV Department of  
 OCT 18 2023



# Actual Wellpath Report

Gothic Unit 1H ST01 AWP Proj: 15516'  
Page 3 of 10



REFERENCE WELLPATH IDENTIFICATION				
Operator	ANTERO RESOURCES CORPORATION		Well	Gothic Unit 1H ST01
Field	Tyler		API	47-095-02824-0000
Facility	Thin Air Pad		Wellbore	Gothic Unit 1H ST01 AWB
Slot	Slot 2A		Sidetrack from	Gothic Unit 1H AWP Proj: 3722' at 594.00 MD

WELLPATH DATA (174 stations)																
MD (ft)	Inclination (°)	Azimuth (°)	TVD (ft)	Vert Sect (ft)	North (ft)	East (ft)	Grid East [US ft]	Grid North [US ft]	Latitude	Longitude	Closure Dist (ft)	Closure Dir (°)	DLS (°/100ft)	Build Rate (°/100ft)	Turn Rate (°/100ft)	Comments
2618.00	26.040	266.940	2485.27	-91.56	-106.27	-607.85	1698236.21	14354266.67	39°31'41.0035"N	80°47'41.8174"W	617.07	260.083	2.45	-2.17	2.49	
2713.00	24.890	265.110	2571.04	-101.79	-109.09	-648.59	1698195.49	14354263.86	39°31'40.9766"N	80°47'42.3375"W	657.70	260.453	1.47	-1.21	-1.93	
2807.00	24.710	267.420	2656.37	-111.80	-111.66	-687.93	1698156.16	14354261.29	39°31'40.9521"N	80°47'42.8395"W	696.93	260.781	1.05	-0.19	2.46	
2902.00	23.930	267.340	2742.94	-122.47	-113.44	-727.01	1698117.10	14354259.50	39°31'40.9353"N	80°47'43.3384"W	735.81	261.131	0.82	-0.82	-0.08	
2996.00	23.410	264.540	2829.04	-131.85	-116.11	-764.65	1698079.48	14354256.84	39°31'40.9098"N	80°47'43.8187"W	773.41	261.366	1.32	-0.55	-2.98	
3090.00	22.990	262.600	2915.44	-139.57	-120.25	-801.44	1698042.70	14354252.70	39°31'40.8697"N	80°47'44.2884"W	810.41	261.467	0.93	-0.45	-2.06	
3185.00	23.410	263.010	3002.75	-146.88	-124.93	-838.57	1698005.58	14354248.02	39°31'40.8242"N	80°47'44.7624"W	847.82	261.526	0.47	0.44	0.43	
3279.00	23.200	263.340	3089.08	-154.37	-129.35	-875.49	1697968.67	14354243.60	39°31'40.7814"N	80°47'45.2337"W	885.00	261.595	0.26	-0.22	0.35	
3374.00	23.300	264.380	3176.37	-162.36	-133.36	-912.78	1697931.41	14354239.59	39°31'40.7426"N	80°47'45.7097"W	922.47	261.687	0.44	0.11	1.09	
3468.00	24.160	266.040	3262.42	-171.31	-136.51	-950.47	1697893.73	14354236.44	39°31'40.7123"N	80°47'46.1908"W	960.22	261.827	1.16	0.91	1.77	
3563.00	24.030	266.050	3349.15	-181.01	-139.19	-989.16	1697855.05	14354233.77	39°31'40.6867"N	80°47'46.6846"W	998.91	261.990	0.14	-0.14	0.01	
3606.00	23.780	264.920	3388.46	-185.21	-140.56	-1006.53	1697837.69	14354232.40	39°31'40.6736"N	80°47'46.9063"W	1016.30	262.050	1.21	-0.58	-2.63	
3720.00	22.190	263.370	3493.40	-194.94	-145.08	-1050.81	1697793.43	14354227.88	39°31'40.6299"N	80°47'47.4716"W	1060.78	262.139	1.49	-1.39	-1.36	BH AT Curve <8-1/2"> (3606')(3720'-15491')
3814.00	24.080	260.710	3579.84	-201.63	-150.23	-1087.37	1697756.88	14354222.73	39°31'40.5798"N	80°47'47.9383"W	1097.70	262.134	2.30	2.01	-2.83	
3909.00	23.150	261.140	3666.89	-207.82	-156.23	-1124.95	1697719.31	14354216.73	39°31'40.5213"N	80°47'48.4181"W	1135.75	262.093	1.00	-0.98	0.45	
4004.00	24.750	261.730	3753.70	-214.45	-161.97	-1163.09	1697681.20	14354211.00	39°31'40.4655"N	80°47'48.9049"W	1174.31	262.072	1.70	1.68	0.62	
4098.00	26.830	262.200	3838.34	-221.85	-167.68	-1203.58	1697640.72	14354205.29	39°31'40.4099"N	80°47'49.4218"W	1215.20	262.069	2.22	2.21	0.50	
4193.00	27.030	261.980	3923.03	-229.72	-173.60	-1246.20	1697598.12	14354199.37	39°31'40.3524"N	80°47'49.9659"W	1258.23	262.070	0.24	0.21	-0.23	
4288.00	25.640	262.090	4008.17	-237.38	-179.44	-1287.93	1697556.40	14354193.53	39°31'40.2956"N	80°47'50.4986"W	1300.37	262.068	1.46	-1.46	0.12	
4382.00	26.970	262.690	4092.44	-245.22	-184.95	-1329.22	1697515.13	14354188.02	39°31'40.2420"N	80°47'51.0257"W	1342.03	262.079	1.44	1.41	0.64	
4477.00	26.210	263.180	4177.39	-253.62	-190.18	-1371.42	1697472.95	14354182.79	39°31'40.1912"N	80°47'51.5644"W	1384.54	262.105	0.83	-0.80	0.52	
4571.00	25.280	262.730	4262.06	-261.69	-195.19	-1411.94	1697432.44	14354177.79	39°31'40.1427"N	80°47'52.0817"W	1425.37	262.129	1.01	-0.99	-0.48	
4666.00	27.170	262.450	4347.27	-269.73	-200.61	-1453.57	1697390.83	14354172.37	39°31'40.0901"N	80°47'52.6131"W	1467.35	262.142	1.99	1.99	-0.29	
4760.00	24.200	262.890	4431.98	-277.58	-205.81	-1493.97	1697350.44	14354167.17	39°31'40.0395"N	80°47'53.1288"W	1508.08	262.156	3.17	-3.16	0.47	
4854.00	24.370	263.080	4517.66	-285.24	-210.53	-1532.34	1697312.09	14354162.45	39°31'39.9937"N	80°47'53.6186"W	1546.74	262.177	0.20	0.18	0.20	
4949.00	25.010	262.610	4603.97	-293.01	-215.48	-1571.71	1697272.73	14354157.51	39°31'39.9457"N	80°47'54.1212"W	1586.42	262.194	0.70	0.67	-0.49	
5043.00	21.940	263.340	4690.18	-300.41	-220.07	-1608.87	1697235.59	14354152.92	39°31'39.9011"N	80°47'54.5956"W	1623.85	262.211	3.28	-3.27	0.78	
5137.00	22.370	262.980	4777.24	-307.54	-224.29	-1644.07	1697200.41	14354148.70	39°31'39.8602"N	80°47'55.0449"W	1659.30	262.231	0.48	0.46	-0.38	
5232.00	23.140	263.460	4864.85	-314.98	-228.63	-1680.56	1697163.93	14354144.36	39°31'39.8181"N	80°47'55.5106"W	1696.04	262.253	0.83	0.81	0.51	
5325.00	25.740	261.600	4950.42	-322.36	-233.71	-1719.10	1697125.40	14354139.28	39°31'39.7687"N	80°47'56.0027"W	1734.92	262.258	2.88	2.77	-1.98	

RECEIVED  
Office of Oil and Gas  
OCT 18 2023  
WV Department of  
Environmental Protection



# Actual Wellpath Report

Gothic Unit 1H ST01 AWP Proj: 15516'

Page 4 of 10



REFERENCE WELLPATH IDENTIFICATION				
Operator	ANTERO RESOURCES CORPORATION		Well	Gothic Unit 1H ST01
Field	Tyler		API	47-095-02824-0000
Facility	Thin Air Pad		Wellbore	Gothic Unit 1H ST01 AWB
Slot	Slot 2A		Sidetrack from	Gothic Unit 1H AWP Proj: 3722' at 594.00 MD

WELLPATH DATA (174 stations) † = interpolated, ‡ = extrapolated station																
MD [ft]	Inclination [°]	Azimuth [°]	TVD [ft]	Vert Sect [ft]	North [ft]	East [ft]	Grid East [US ft]	Grid North [US ft]	Latitude	Longitude	Closure Dist [ft]	Closure Dir [°]	DLS [°/100ft]	Build Rate [°/100ft]	Turn Rate [°/100ft]	Comments
5420.00	22.280	263.430	5036.27	-329.59	-238.74	-1757.01	1697087.51	14354134.26	39°31'39.7199"N	80°47'56.4866"W	1773.16	262.262	3.76	-3.68	1.95	
5515.00	25.580	262.470	5123.10	-337.18	-243.49	-1795.25	1697049.29	14354129.51	39°31'39.6738"N	80°47'56.9747"W	1811.68	262.276	3.50	3.47	-1.01	
5610.00	27.810	261.780	5207.97	-345.00	-249.34	-1837.52	1697007.04	14354123.66	39°31'39.6169"N	80°47'57.5143"W	1854.36	262.272	2.37	2.35	-0.73	
5704.00	29.080	262.280	5290.62	-353.14	-255.56	-1881.86	1696962.71	14354117.45	39°31'39.5564"N	80°47'58.0803"W	1899.13	262.267	1.37	1.35	0.51	
5799.00	28.590	261.560	5373.84	-361.39	-262.00	-1927.22	1696917.37	14354111.00	39°31'39.4937"N	80°47'58.6594"W	1944.94	262.258	0.63	-0.52	-0.74	
5894.00	26.390	261.520	5458.11	-368.99	-268.45	-1970.59	1696874.02	14354104.56	39°31'39.4309"N	80°47'59.2131"W	1988.79	262.242	2.32	-2.32	-0.04	
5899.00	27.850	262.730	5542.68	-376.95	-274.37	-2013.48	1696831.14	14354098.64	39°31'39.3733"N	80°47'59.7607"W	2032.09	262.240	1.64	1.54	1.27	
6083.00	27.870	262.670	5625.76	-385.45	-279.95	-2057.06	1696787.58	14354093.06	39°31'39.3191"N	80°48'0.3169"W	2076.02	262.250	0.04	0.02	-0.06	
6177.00	27.700	262.720	5708.93	-393.92	-285.53	-2100.52	1696744.14	14354087.49	39°31'39.2650"N	80°48'0.8717"W	2119.84	262.259	0.18	-0.18	0.05	
6272.00	23.620	264.260	5794.54	-402.38	-290.23	-2141.37	1696703.30	14354082.79	39°31'39.2194"N	80°48'1.3932"W	2160.95	262.281	4.35	-4.29	1.62	
6366.00	25.290	262.350	5880.11	-410.29	-294.79	-2180.01	1696664.67	14354078.23	39°31'39.1753"N	80°48'1.8865"W	2199.85	262.299	1.97	1.78	-2.03	
6461.00	24.810	263.550	5966.17	-418.24	-299.73	-2219.93	1696624.77	14354073.29	39°31'39.1273"N	80°48'2.3960"W	2240.07	262.311	0.74	-0.51	1.26	
6555.00	23.620	263.020	6051.90	-426.08	-304.23	-2258.22	1696586.50	14354068.79	39°31'39.0836"N	80°48'2.8848"W	2278.62	262.327	1.29	-1.27	-0.56	
6650.00	25.710	257.700	6138.24	-432.08	-310.93	-2297.25	1696547.48	14354062.09	39°31'39.0182"N	80°48'3.3831"W	2318.20	262.292	3.21	2.20	-5.60	
6744.00	27.080	246.040	6222.49	-432.21	-323.98	-2336.76	1696507.99	14354049.05	39°31'38.8902"N	80°48'3.8876"W	2359.11	262.107	5.69	1.46	-12.40	
6839.00	26.840	224.330	6307.45	-420.36	-348.05	-2371.48	1696473.28	14354024.99	39°31'38.8530"N	80°48'4.3315"W	2396.89	261.651	10.29	-0.46	-22.85	
6933.00	29.650	211.240	6390.40	-395.65	-383.05	-2398.30	1696446.47	14353990.00	39°31'38.3077"N	80°48'4.6747"W	2428.70	260.926	7.29	3.20	-13.93	
7028.00	32.150	197.540	6472.02	-359.94	-427.30	-2418.13	1696426.65	14353945.77	39°31'37.8708"N	80°48'4.9290"W	2455.60	259.979	7.84	2.63	-14.42	
7114.00†	36.774	191.014	6542.93	-318.98	-474.43	-2429.96	1696414.83	14353898.66	39°31'37.4052"N	80°48'5.0813"W	2475.84	258.952	6.87	5.38	-7.59	Sycamore: 7114' MD
7122.00	37.220	190.480	6549.32	-314.78	-479.16	-2430.86	1696413.93	14353893.93	39°31'37.3585"N	80°48'5.0929"W	2477.63	258.849	6.87	5.58	-6.67	
7217.00	42.360	182.980	6622.33	-259.77	-539.45	-2437.75	1696407.04	14353833.66	39°31'36.7628"N	80°48'5.1826"W	2496.73	257.522	7.40	5.41	-7.89	
7270.00†	46.310	178.786	6660.24	-224.83	-576.46	-2438.28	1696406.51	14353796.67	39°31'36.3970"N	80°48'5.1903"W	2505.49	256.698	9.28	7.45	-7.91	Middlesex: 7270' MD
7311.00	49.460	175.910	6687.74	-195.57	-606.83	-2436.85	1696407.94	14353786.31	39°31'36.0968"N	80°48'5.1730"W	2511.27	256.016	9.28	7.68	-7.02	
7405.00	55.140	170.770	6745.22	-122.81	-680.62	-2428.11	1696416.68	14353692.55	39°31'35.3674"N	80°48'5.0635"W	2521.69	254.341	7.43	6.04	-5.47	
7426.00†	57.057	170.053	6756.93	-105.59	-697.80	-2425.20	1696419.58	14353675.38	39°31'35.1975"N	80°48'5.0269"W	2523.60	253.948	9.56	9.13	-3.41	Burkett: 7426' MD
7484.00†	62.370	168.223	6786.18	-55.96	-746.96	-2415.75	1696429.03	14353626.23	39°31'34.7114"N	80°48'4.9076"W	2528.59	252.818	9.56	9.16	-3.16	Tully: 7484' MD
7500.00	63.840	167.750	6793.41	-41.78	-760.92	-2412.78	1696432.00	14353612.28	39°31'34.5734"N	80°48'4.8701"W	2529.92	252.496	9.56	9.19	-2.95	
7595.00	70.200	163.380	6830.50	45.40	-845.53	-2390.92	1696453.85	14353527.71	39°31'33.7367"N	80°48'4.5935"W	2536.02	250.524	7.92	6.69	-4.60	
7656.00†	74.560	163.731	6848.96	103.49	-901.28	-2374.47	1696470.30	14353471.98	39°31'33.1854"N	80°48'4.3851"W	2539.76	249.215	7.17	7.15	0.58	Marcellus POE: 7656' MD
7690.00	76.990	163.920	6857.31	136.42	-932.93	-2365.29	1696479.48	14353440.34	39°31'32.8724"N	80°48'4.2689"W	2542.62	248.474	7.17	7.15	0.56	

RECEIVED  
 Office of Oil and Gas  
 OCT 18 2023  
 WV Department of  
 Environmental Protection



# Actual Wellpath Report

Gothic Unit 1H ST01 AWP Proj: 15516'

Page 5 of 10



REFERENCE WELLPATH IDENTIFICATION				
Operator	ANTERO RESOURCES CORPORATION		Well	Gothic Unit 1H ST01
Field	Tyler		API	47-095-02824-0000
Facility	Thin Air Pad		Wellbore	Gothic Unit 1H ST01 AWB
Slot	Slot 2A		Sidetrack from	Gothic Unit 1H AWP Proj: 3722' at 594.00 MD

WELLPATH DATA (174 stations)																
MD [ft]	Inclination [°]	Azimuth [°]	TVD [ft]	Vert Sect [ft]	North [ft]	East [ft]	Grid East [US ft]	Grid North [US ft]	Latitude	Longitude	Closure Dist [ft]	Closure Dir [°]	DLS ["/100ft]	Build Rate ["/100ft]	Turn Rate ["/100ft]	Comments
7784.00	84.020	165.350	6872.81	228.93	-1022.27	-2340.75	1696504.00	14353351.04	39°31'31.9888"N	80°48'3.9582"W	2554.24	246.408	7.63	7.48	1.52	
7879.00	92.160	163.630	6875.98	323.67	-1113.68	-2315.38	1696529.37	14353259.66	39°31'31.0849"N	80°48'3.6371"W	2569.29	244.313	8.76	8.57	-1.81	
7973.00	90.490	162.900	6873.80	417.60	-1203.67	-2288.32	1696556.41	14353169.71	39°31'30.1949"N	80°48'3.2943"W	2585.58	242.255	1.94	-1.78	-0.78	
8067.00	90.000	162.830	6873.40	511.58	-1293.50	-2260.62	1696584.10	14353079.92	39°31'29.3065"N	80°48'2.9434"W	2604.53	240.222	0.53	-0.52	-0.07	
8162.00	91.600	159.960	6872.07	606.55	-1383.51	-2230.32	1696614.39	14352989.94	39°31'28.4182"N	80°48'2.5593"W	2624.58	238.188	3.46	-1.68	-3.02	
8256.00	90.860	156.310	6870.05	700.35	-1470.71	-2195.33	1696649.37	14352902.77	39°31'27.5536"N	80°48'2.1152"W	2642.44	236.181	3.96	-0.79	-3.88	
8351.00	89.260	160.550	6869.96	795.18	-1559.04	-2160.41	1696684.27	14352814.48	39°31'26.6799"N	80°48'1.6721"W	2664.20	234.184	4.77	-1.68	4.46	
8445.00	89.570	159.430	6870.91	889.14	-1647.36	-2128.25	1696716.42	14352726.20	39°31'25.8063"N	80°48'1.2642"W	2691.32	232.259	1.24	0.33	-1.19	
8540.00	91.940	160.820	6869.66	984.09	-1736.68	-2095.96	1696748.70	14352636.91	39°31'24.9227"N	80°48'0.8546"W	2721.97	230.355	2.89	2.49	1.46	
8634.00	90.830	160.600	6867.39	1078.06	-1825.38	-2064.91	1696779.73	14352548.25	39°31'24.0454"N	80°48'0.4610"W	2756.06	228.523	1.20	-1.18	-0.23	
8729.00	91.080	160.600	6865.81	1173.03	-1914.97	-2033.36	1696811.27	14352458.69	39°31'23.1593"N	80°48'0.0609"W	2793.15	226.718	0.26	0.26	0.00	
8823.00	90.520	159.610	6864.50	1266.99	-2003.35	-2001.38	1696843.24	14352370.35	39°31'22.2851"N	80°47'59.6553"W	2831.77	224.972	1.21	-0.60	-1.05	
8918.00	91.170	160.380	6863.09	1361.94	-2092.61	-1968.88	1696875.72	14352281.13	39°31'21.4022"N	80°47'59.2431"W	2873.24	223.255	1.06	0.68	0.81	
9012.00	89.720	160.770	6862.36	1455.92	-2181.25	-1937.62	1696906.97	14352192.52	39°31'20.5254"N	80°47'58.8467"W	2917.57	221.615	1.60	-1.54	0.41	
9107.00	89.720	161.630	6862.83	1550.92	-2271.18	-1907.01	1696937.57	14352102.62	39°31'19.6360"N	80°47'58.4586"W	2965.63	220.019	0.91	0.00	0.91	
9201.00	90.800	161.830	6862.40	1644.92	-2360.44	-1877.54	1696967.03	14352013.40	39°31'18.7531"N	80°47'58.0851"W	3016.10	218.499	1.17	1.15	0.21	
9296.00	90.340	163.540	6861.46	1739.89	-2451.13	-1849.27	1696995.29	14351922.75	39°31'17.8562"N	80°47'57.7269"W	3070.48	217.033	1.86	-0.48	1.80	
9391.00	89.660	159.330	6861.46	1834.87	-2541.16	-1819.03	1697025.51	14351832.75	39°31'16.9657"N	80°47'57.3436"W	3125.12	215.596	4.49	-0.72	-4.43	
9485.00	89.480	163.490	6862.16	1928.84	-2630.24	-1789.07	1697055.46	14351743.71	39°31'16.0847"N	80°47'56.9639"W	3181.02	214.223	4.43	-0.19	4.43	
9580.00	90.280	159.580	6862.36	2023.82	-2720.33	-1758.99	1697085.53	14351653.66	39°31'15.1937"N	80°47'56.5825"W	3239.48	212.887	4.20	0.84	-4.12	
9674.00	89.600	163.750	6862.46	2117.80	-2809.53	-1729.42	1697115.08	14351564.48	39°31'14.3113"N	80°47'56.2078"W	3299.15	211.615	4.49	-0.72	4.44	
9768.00	89.850	163.520	6862.91	2211.74	-2899.73	-1702.94	1697141.56	14351474.33	39°31'13.4194"N	80°47'55.8725"W	3362.80	210.425	0.36	0.27	-0.24	
9863.00	89.450	159.880	6863.49	2306.72	-2989.90	-1673.12	1697171.37	14351384.19	39°31'12.5275"N	80°47'55.4945"W	3426.20	209.231	3.85	-0.42	-3.83	
9958.00	91.230	161.320	6862.93	2401.70	-3079.50	-1641.56	1697202.91	14351294.62	39°31'11.6412"N	80°47'55.0944"W	3489.71	208.060	2.41	1.87	1.52	
10052.00	89.380	159.460	6862.43	2495.67	-3168.04	-1610.02	1697234.44	14351206.12	39°31'10.7655"N	80°47'54.6944"W	3553.68	206.940	2.79	-1.97	-1.98	
10147.00	90.830	163.060	6862.25	2590.65	-3257.99	-1579.50	1697264.95	14351116.21	39°31'9.8758"N	80°47'54.3076"W	3620.68	205.865	4.09	1.53	3.79	
10241.00	90.710	163.000	6860.99	2684.61	-3347.89	-1552.07	1697292.37	14351026.35	39°31'8.9867"N	80°47'53.9601"W	3690.16	204.872	0.14	-0.13	-0.06	
10336.00	89.910	159.020	6860.48	2779.59	-3437.70	-1521.16	1697323.26	14350936.57	39°31'8.0984"N	80°47'53.5683"W	3759.21	203.869	4.27	-0.84	-4.19	
10431.00	91.140	165.130	6859.60	2874.53	-3528.04	-1491.94	1697352.47	14350846.27	39°31'7.2049"N	80°47'53.1980"W	3830.53	202.923	6.56	1.29	6.43	
10525.00	89.780	161.020	6858.85	2968.47	-3617.94	-1464.58	1697379.82	14350756.40	39°31'6.3158"N	80°47'52.8515"W	3903.14	202.039	4.61	-1.45	-4.37	

RECEIVED  
 Office of Oil and Gas  
 OCT 18 2023  
 WV Department of  
 Environmental Protection



# Actual Wellpath Report

Gothic Unit 1H ST01 AWP Proj: 15516'

Page 6 of 10



## REFERENCE WELLPATH IDENTIFICATION

Operator	ANTERO RESOURCES CORPORATION	Well	Gothic Unit 1H ST01
Field	Tyler	API	47-095-02824-0000
Facility	Thin Air Pad	Wellbore	Gothic Unit 1H ST01 AWB
Slot	Slot 2A	Sidetrack from	Gothic Unit 1H AWP Proj: 3722' at 594.00 MD

## WELLPATH DATA (174 stations)

MD [ft]	Inclination [°]	Azimuth [°]	TVD [ft]	Vert Sect [ft]	North [ft]	East [ft]	Grid East [US ft]	Grid North [US ft]	Latitude	Longitude	Closure Dist [ft]	Closure Dir [°]	DLS [°/100ft]	Build Rate [°/100ft]	Turn Rate [°/100ft]	Comments
10619.00	90.990	162.570	6858.22	3062.46	-3707.23	-1435.22	1697409.17	14350667.15	39°31'5.4326"N	80°47'52.4793"W	3975.35	201.163	2.09	1.29	1.65	
10714.00	90.830	164.200	6856.71	3157.40	-3798.25	-1408.06	1697436.32	14350576.16	39°31'4.5325"N	80°47'52.1354"W	4050.84	200.340	1.72	-0.17	1.72	
10808.00	90.090	160.360	6855.95	3251.37	-3887.77	-1379.45	1697464.92	14350486.68	39°31'3.6471"N	80°47'51.7729"W	4125.24	199.536	4.16	-0.79	-4.09	
10903.00	90.150	161.300	6855.76	3346.36	-3977.50	-1348.26	1697496.10	14350396.99	39°31'2.7596"N	80°47'51.3775"W	4199.80	198.725	0.99	0.06	0.99	
10997.00	90.800	164.436	6854.98	3440.32	-4067.31	-1320.57	1697523.78	14350307.21	39°31'1.8713"N	80°47'51.0267"W	4276.32	197.987	3.40	0.69	3.33	
11091.00	91.140	159.310	6853.38	3534.28	-4156.60	-1291.33	1697553.00	14350217.95	39°31'0.9882"N	80°47'50.6562"W	4352.57	197.258	5.46	0.36	-5.45	
11186.00	90.680	162.940	6851.87	3629.25	-4246.47	-1260.61	1697583.71	14350128.12	39°31'0.0993"N	80°47'50.2668"W	4429.63	196.534	3.85	-0.48	3.82	
11280.00	90.340	163.120	6851.04	3723.21	-4336.37	-1233.17	1697611.14	14350038.26	39°30'59.2102"N	80°47'49.9193"W	4508.31	195.875	0.41	-0.36	0.19	
11374.00	89.820	163.340	6850.91	3817.17	-4426.37	-1206.05	1697638.25	14349948.29	39°30'58.3200"N	80°47'49.5758"W	4587.74	195.241	0.60	-0.55	0.23	
11469.00	89.910	163.150	6851.13	3912.13	-4517.34	-1178.67	1697665.82	14349857.36	39°30'57.4204"N	80°47'49.2290"W	4668.58	194.824	0.22	0.09	-0.20	
11563.00	88.770	162.160	6852.21	4006.10	-4607.06	-1150.64	1697693.63	14349767.68	39°30'56.5331"N	80°47'48.8741"W	4748.57	194.023	1.61	-1.21	-1.05	
11658.00	89.170	158.020	6853.92	4101.03	-4696.34	-1118.30	1697725.96	14349678.43	39°30'55.6499"N	80°47'48.4640"W	4827.65	193.394	4.38	0.42	-4.36	
11752.00	88.950	163.050	6855.46	4194.98	-4784.93	-1087.00	1697757.26	14349589.87	39°30'54.7736"N	80°47'48.0670"W	4906.84	192.799	5.36	-0.23	5.35	
11847.00	91.420	159.090	6855.16	4289.95	-4874.77	-1056.18	1697788.06	14349500.07	39°30'53.8851"N	80°47'47.6765"W	4987.87	192.225	4.91	2.60	-4.17	
11942.00	88.340	162.060	6855.36	4384.91	-4964.34	-1024.60	1697819.63	14349410.54	39°30'52.9991"N	80°47'47.2761"W	5068.97	191.662	4.50	-3.24	3.13	
12036.00	89.880	160.400	6856.82	4478.89	-5053.32	-994.36	1697849.86	14349321.59	39°30'52.1190"N	80°47'46.8928"W	5150.22	191.132	2.41	1.64	-1.77	
12131.00	91.260	163.010	6855.87	4573.88	-5143.51	-964.54	1697879.66	14349231.44	39°30'51.2270"N	80°47'46.5149"W	5233.16	190.621	3.11	1.45	2.75	
12226.00	88.920	160.840	6855.72	4668.86	-5233.81	-935.07	1697909.12	14349141.18	39°30'50.3339"N	80°47'46.1415"W	5316.68	190.130	3.36	-2.46	-2.28	
12321.00	92.280	163.020	6854.73	4763.83	-5324.10	-905.61	1697938.57	14349050.92	39°30'49.4408"N	80°47'45.7682"W	5400.57	189.653	4.22	3.54	2.29	
12416.00	88.030	161.110	6854.47	4857.80	-5413.50	-876.67	1697967.50	14348961.55	39°30'48.5565"N	80°47'45.4016"W	5484.03	189.199	4.96	-4.52	-2.03	
12510.00	91.790	160.060	6854.62	4952.77	-5503.08	-845.10	1697999.06	14348872.01	39°30'47.6705"N	80°47'45.0013"W	5567.60	188.731	4.11	3.96	-1.11	
12604.00	90.180	164.200	6853.01	5046.73	-5592.51	-816.27	1698027.88	14348782.61	39°30'46.7860"N	80°47'44.6360"W	5651.77	188.304	4.72	-1.71	4.40	
12699.00	90.520	160.560	6852.43	5141.70	-5683.04	-787.51	1698056.62	14348692.12	39°30'45.8906"N	80°47'44.2718"W	5737.34	187.889	3.85	0.36	-3.83	
12794.00	91.290	162.490	6850.92	5236.69	-5773.13	-757.41	1698086.71	14348602.07	39°30'44.9996"N	80°47'43.8904"W	5822.60	187.474	2.19	0.81	2.03	
12888.00	88.210	159.920	6851.33	5330.66	-5862.10	-727.14	1698116.97	14348513.14	39°30'44.1196"N	80°47'43.5067"W	5907.02	187.071	4.27	-3.28	-2.73	
12983.00	90.800	160.800	6852.16	5425.63	-5951.56	-695.21	1698148.89	14348423.71	39°30'43.2347"N	80°47'43.1019"W	5992.02	186.663	2.88	2.73	0.93	
13077.00	92.590	161.820	6849.38	5519.58	-6040.56	-665.10	1698178.98	14348334.75	39°30'42.3544"N	80°47'42.7203"W	6077.06	186.283	2.19	1.90	1.09	
13172.00	91.050	162.430	6846.36	5614.53	-6130.92	-635.96	1698208.11	14348244.42	39°30'41.4607"N	80°47'42.3511"W	6163.82	185.922	1.74	-1.62	0.64	
13266.00	88.800	161.380	6846.48	5708.52	-6220.27	-606.77	1698237.30	14348155.11	39°30'40.5770"N	80°47'41.9813"W	6249.79	185.571	2.64	-2.39	-1.12	
13361.00	91.690	160.890	6846.08	5803.50	-6310.15	-576.05	1698268.00	14348065.26	39°30'39.6879"N	80°47'41.5920"W	6336.39	185.216	3.09	3.04	-0.52	

NY Department of  
Environmental Protection

OCT 18 2023

RECEIVED  
Office of Oil and Gas



# Actual Wellpath Report

Gothic Unit 1H ST01 AWP Proj: 15516'

Page 7 of 10



REFERENCE WELLPATH IDENTIFICATION			
Operator	ANTERO RESOURCES CORPORATION	Well	Gothic Unit 1H ST01
Field	Tyler	API	47-095-02824-0000
Facility	Thin Air Pad	Wellbore	Gothic Unit 1H ST01 AWB
Slot	Slot 2A	Sidetrack from	Gothic Unit 1H AWP Proj: 3722' at 594.00 MD

WELLPATH DATA (174 stations) † = interpolated, ‡ = extrapolated station																
MD [ft]	Inclination [°]	Azimuth [°]	TVD [ft]	Vert Sect [ft]	North [ft]	East [ft]	Grid East [US ft]	Grid North [US ft]	Latitude	Longitude	Closure Dist [ft]	Closure Dir [°]	DLS [°/100ft]	Build Rate [°/100ft]	Turn Rate [°/100ft]	Comments
13455.00	87.320	161.820	6846.89	5897.48	-6399.19	-546.01	1698298.03	14347976.25	39°30'38.8072"N	80°47'41.2113"W	6422.45	184.877	4.75	-4.65	0.99	
13550.00	91.020	161.510	6848.26	5992.45	-6489.35	-516.13	1698327.89	14347886.14	39°30'37.9156"N	80°47'40.8327"W	6509.84	184.547	3.91	3.89	-0.33	
13644.00	88.710	162.540	6848.48	6086.44	-6578.75	-487.13	1698356.89	14347796.77	39°30'37.0313"N	80°47'40.4652"W	6596.76	184.235	2.69	-2.46	1.10	
13738.00	89.750	163.640	6849.75	6180.39	-6668.67	-459.79	1698384.22	14347706.88	39°30'36.1419"N	80°47'40.1191"W	6684.51	183.944	1.61	1.11	1.17	
13833.00	87.750	160.760	6851.82	6275.35	-6759.09	-430.76	1698413.23	14347616.50	39°30'35.2477"N	80°47'39.7513"W	6772.80	183.647	3.69	-2.11	-3.03	
13927.00	91.110	162.530	6852.76	6369.33	-6848.29	-401.17	1698442.81	14347527.34	39°30'34.3654"N	80°47'39.3763"W	6860.03	183.352	4.04	3.57	1.88	
14021.00	89.050	163.330	6852.62	6463.30	-6938.14	-373.57	1698470.39	14347437.52	39°30'33.4768"N	80°47'39.0269"W	6948.19	183.082	2.35	-2.19	0.85	
14116.00	88.950	159.020	6854.28	6558.26	-7028.03	-342.93	1698501.02	14347347.67	39°30'32.5877"N	80°47'38.6386"W	7036.39	182.794	4.54	-0.11	-4.54	
14211.00	90.680	160.760	6854.59	6653.21	-7117.23	-310.27	1698533.67	14347258.51	39°30'31.7054"N	80°47'38.2245"W	7123.99	182.496	2.58	1.82	1.83	
14304.00	90.550	162.110	6853.59	6746.20	-7205.38	-280.66	1698563.27	14347170.39	39°30'30.8335"N	80°47'37.8494"W	7210.84	182.231	1.46	-0.14	1.45	
14399.00	90.370	162.680	6852.83	6841.19	-7295.93	-251.93	1698591.99	14347079.88	39°30'29.9379"N	80°47'37.4854"W	7300.28	181.978	0.63	-0.19	0.60	
14494.00	90.550	163.610	6852.07	6936.15	-7386.84	-224.39	1698619.52	14346989.00	39°30'29.0387"N	80°47'37.1367"W	7390.25	181.740	1.00	0.19	0.98	
14588.00	89.720	163.390	6851.84	7030.09	-7476.97	-197.69	1698646.21	14346898.91	39°30'28.1474"N	80°47'36.7987"W	7479.58	181.515	0.91	-0.88	-0.23	
14682.00	89.910	160.690	6852.15	7124.08	-7566.38	-168.71	1698675.18	14346809.53	39°30'27.2630"N	80°47'36.4316"W	7568.26	181.277	2.88	0.20	-2.87	
14777.00	93.290	163.030	6849.50	7219.02	-7656.60	-139.15	1698704.73	14346719.34	39°30'26.3707"N	80°47'36.0571"W	7657.87	181.041	4.33	3.56	2.46	
14871.00	90.340	162.160	6846.52	7312.95	-7746.24	-111.05	1698732.82	14346629.74	39°30'25.4841"N	80°47'35.7012"W	7747.04	180.821	3.27	-3.14	-0.93	
14965.00	90.060	161.990	6846.19	7406.94	-7835.68	-82.12	1698761.74	14346540.34	39°30'24.5995"N	80°47'35.3347"W	7836.11	180.600	0.35	-0.30	-0.18	
15060.00	90.000	161.240	6846.14	7501.94	-7925.83	-52.15	1698791.69	14346450.22	39°30'23.7078"N	80°47'34.9551"W	7926.00	180.377	0.79	-0.06	-0.79	
15154.00	90.030	162.110	6846.12	7595.94	-8015.06	-22.60	1698821.23	14346361.03	39°30'22.8252"N	80°47'34.5807"W	8015.10	180.162	0.93	0.03	0.93	
15249.00	88.150	162.170	6847.62	7690.92	-8105.47	6.53	1698850.35	14346270.66	39°30'21.9311"N	80°47'34.2117"W	8105.47	179.954	1.98	-1.98	0.06	
15343.00	90.120	162.430	6849.04	7784.89	-8195.01	35.10	1698878.91	14346181.16	39°30'21.0455"N	80°47'33.8498"W	8195.08	179.755	2.11	2.10	0.28	
15437.00	90.150	162.230	6848.82	7878.88	-8284.57	63.64	1698907.43	14346091.63	39°30'20.1597"N	80°47'33.4884"W	8284.81	179.560	0.22	0.03	-0.21	
15491.00	90.030	162.310	6848.74	7932.88	-8336.01	80.08	1698923.87	14346040.21	39°30'19.6509"N	80°47'33.2801"W	8336.39	179.450	0.27	-0.22	0.15	
15516.00‡	90.030	162.310	6848.72	7957.88	-8359.82	87.68	1698931.46	14346016.40	39°30'19.4154"N	80°47'33.1839"W	8360.28	179.399	0.00	0.00	0.00	Projected MD at TD: 15516'

RECEIVED  
 Office of Oil and Gas  
 OCT 18 2023  
 WV Department of  
 Environmental Protection



# Actual Wellpath Report

Gothic Unit 1H ST01 AWP Proj: 15516'

Page 8 of 10



## REFERENCE WELLPATH IDENTIFICATION

Operator	ANTERO RESOURCES CORPORATION	Well	Gothic Unit 1H ST01
Field	Tyler	API	47-095-02824-0000
Facility	Thin Air Pad	Wellbore	Gothic Unit 1H ST01 AWB
Slot	Slot 2A	Sidetrack from	Gothic Unit 1H AWP Proj: 3722' at 594.00 MD

## HOLE & CASING SECTIONS - Ref Wellbore: Gothic Unit 1H ST01 AWB Ref Wellpath: Gothic Unit 1H ST01 AWP Proj: 15516'

String/Diameter	Start MD [ft]	End MD [ft]	Interval [ft]	Start TVD [ft]	End TVD [ft]	Start N/S [ft]	Start E/W [ft]	End N/S [ft]	End E/W [ft]
20in Conductor	25.50	126.00	100.50	25.50	126.00	0.00	0.00	0.02	-0.09
17.5in Open Hole	126.00	463.00	337.00	126.00	463.00	0.02	-0.09	-0.08	0.43
13.375in Casing Surface	25.50	443.00	417.50	25.50	443.00	0.00	0.00	0.12	0.38
12.25in Open Hole	463.00	594.00	131.00	463.00	593.98	-0.08	0.43	-1.70	0.12
12.25in Open Hole	594.00	3685.00	3091.00	593.98	3461.05	-1.70	0.12	-143.60	-1037.54
9.625in Casing Intermediate	25.50	3665.00	3639.50	25.50	3442.62	0.00	0.00	-142.79	-1029.83
8.5in Open Hole	3685.00	15516.00	11831.00	3461.05	6848.72	-143.60	-1037.54	-8359.82	87.68
5.5in Casing Production	25.50	15496.00	15470.50	25.50	6848.73	0.00	0.00	-8340.77	81.60

## TARGETS

Name	TVD [ft]	North [ft]	East [ft]	Grid East [US ft]	Grid North [US ft]	Latitude	Longitude	Shape
Gothic Unit 1H POE Rev-3	6851.00	-897.54	-2381.56	1696463.21	14353475.72	39°31'33.2225"N	80°48'4.4755"W	point
Gothic Unit 1H BHL Rev-3	6877.00	-8391.86	118.30	1698962.07	14345984.38	39°30'19.0980"N	80°47'32.7942"W	point
Gothic Unit 1H LP Rev-3	6877.00	-1078.94	-2321.05	1696523.69	14353294.39	39°31'31.4284"N	80°48'3.7085"W	point
Gothic Unit 1H 50' L/R Hard Line	7000.00	-4644.70	-1131.63	1697712.64	14349730.05	39°30'56.1606"N	80°47'48.6325"W	rectangle

2D Rectangle 7900.26 x 100.

RECEIVED  
 Office of Oil and Gas  
 OCT 18 2023  
 WV Department of  
 Environmental Protection



# Actual Wellpath Report

Gothic Unit 1H ST01 AWP Proj: 15516'  
Page 9 of 10



REFERENCE WELLPATH IDENTIFICATION			
Operator	ANTERO RESOURCES CORPORATION	Well	Gothic Unit 1H ST01
Field	Tyler	API	47-095-02824-0000
Facility	Thin Air Pad	Wellbore	Gothic Unit 1H ST01 AWB
Slot	Slot 2A	Sidetrack from	Gothic Unit 1H AWP Proj: 3722' at 594.00 MD

WELLPATH COMPOSITION - Ref Wellbore: Gothic Unit 1H ST01 AWB Ref Wellpath: Gothic Unit 1H ST01 AWP Proj: 15516'					
Start MD [ft]	End MD [ft]	Positional Uncertainty Model	Log Name/Comment	Wellbore	Survey Date
25.50	364.00	Gyrodata 2015 - GC+WMR+DPIPE	01_Gyrodata MS Gyro <17-1/2"> (100'-364')	Gothic Unit 1H AWB	1/11/2023
364.00	594.00	BH NaviTrak (2019) (Axial Corr+HRGM)	02_APS EM <12-1/4"> (364')(462'-3644')	Gothic Unit 1H AWB	1/11/2023
594.00	3606.00	BH NaviTrak (2019) (Axial Corr+HRGM)	03_APS EM <12-1/4"> (594')(657'-3606')	Gothic Unit 1H ST01 AWB	1/26/2023
3606.00	15516.00	BH AutoTrak Curve/eXpress (2019) (HRGM, Short spacing)	04_BH AT Curve <8-1/2"> (3606')(3720'-15491')	Gothic Unit 1H ST01 AWB	4/4/2023

RECEIVED  
 Office of Oil and Gas  
 OCT 18 2023  
 WV Department of  
 Environmental Protection





**Actual Wellpath Report**  
 Gothic Unit 1H ST01 AWP Proj: 15516'  
 Page 10 of 10



REFERENCE WELLPATH IDENTIFICATION			
Operator	ANTERO RESOURCES CORPORATION	Well	Gothic Unit 1H ST01
Field	Tyler	API	47-095-02824-0000
Facility	Thin Air Pad	Wellbore	Gothic Unit 1H ST01 AWB
Slot	Slot 2A	Sidetrack from	Gothic Unit 1H AWP Proj: 3722' at 594.00 MD

COMMENTS
<p><b>Wellpath general comments</b>            API: 47-095-02824-0000            BH Job #: 111653759            Rig: H&amp;P 317            Duration: 4/7/2023-4/11/2023            Gyrodata MS Gyro &lt;17-1/2"&gt; (100'-364')            APS EM [OH] &lt;12-1/4"&gt; (364')(462'-594')            APS EM [ST01] &lt;12-1/4"&gt; (594')(657'-3606')            BH AT Curve &lt;8-1/2"&gt; (3606')(3720'-15491')            Sycamore: 7114' MD            Middlesex: 7270' MD            Burkett: 7426' MD            Tully: 7484' MD            Marcellus POE: 7656' MD            Projected MD at TD: 15516'</p>

RECEIVED  
 Office of Oil and Gas  
 OCT 18 2023  
 WV Department of  
 Environmental Protection