



ANTERO RESOURCES CORPORATION



Location: Tyler County, WV
Field: Tyler
Facility: Thin Air Pad

Slot: Slot 2C
Well: Gothic Unit 3H
Wellbore: Gothic Unit 3H PWB

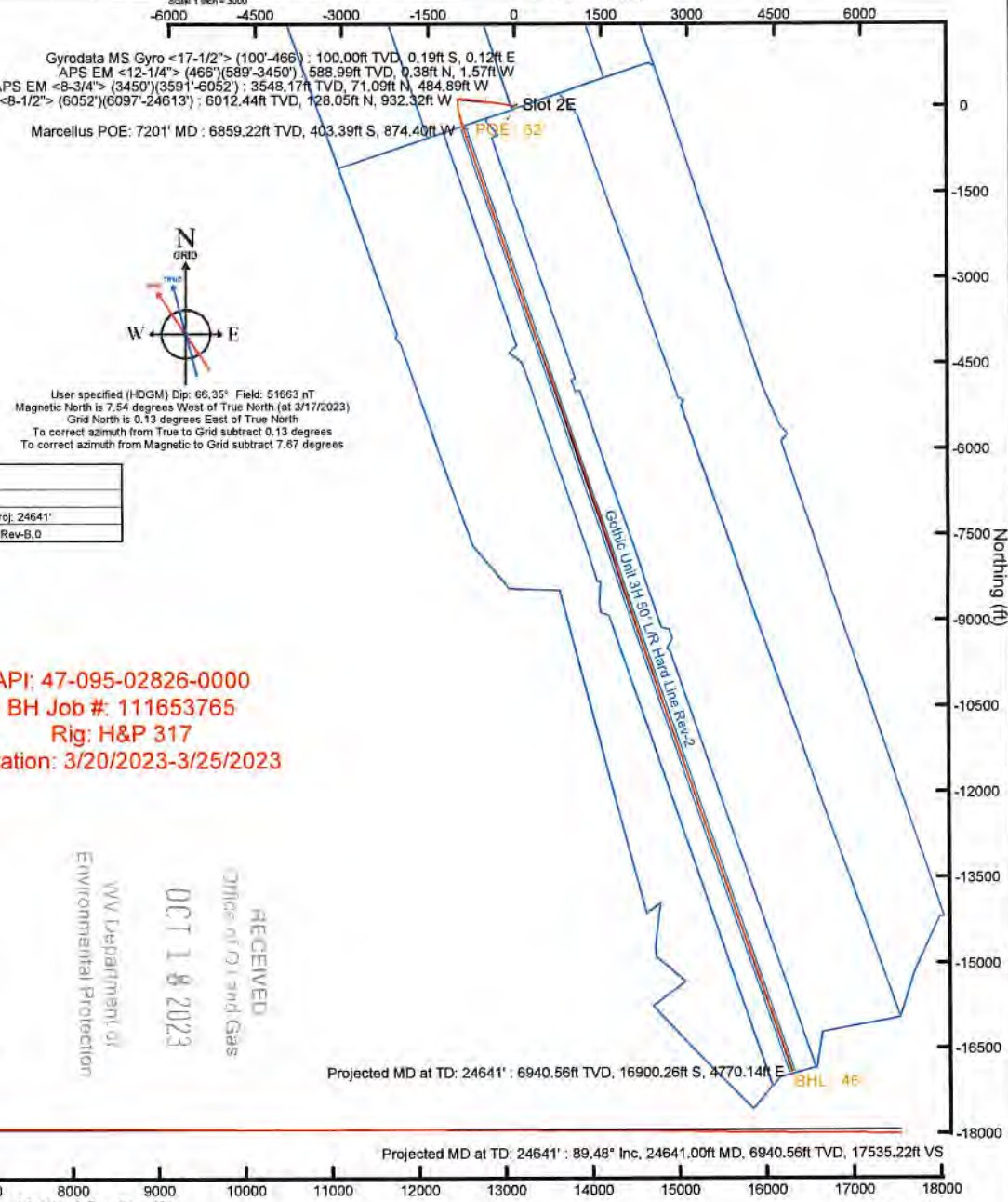
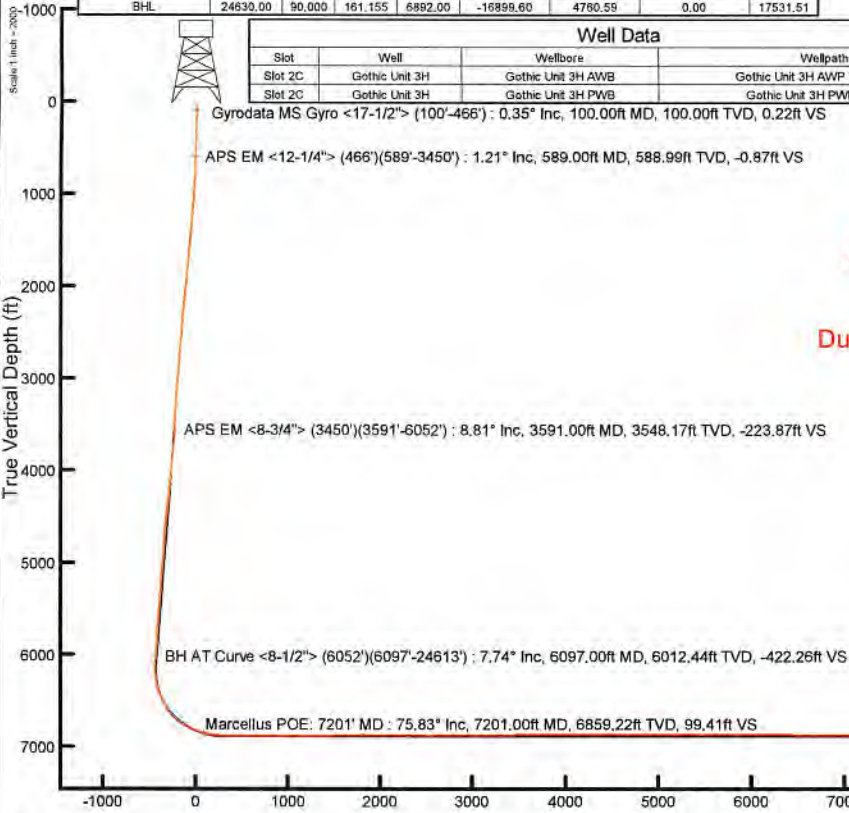
Easting (ft)

Plot reference wellpath is Gothic Unit 3H PWB Rev-B.0	Grid System: NAD27 / UTM Zone 17 North, US foot
This vertical depth is referenced to H&P 317 (RKB)	North Reference: Grid north
Reference wellpath measured depths are referenced to H&P 317 (RKB)	Scale: True distance
H&P 317 (RKB) to Mean Sea Level: 1225.5 feet	Coordinates are in feet referenced to S&T
Mean Sea Level to Ground level (At Slot: Slot 2C): -1200 feet	Depths are in feet
Offset wellpath MDs are referenced to each path's default MD datum	Created by: edesivar on 2023-04-26; Database: VIA_MPL_EASTERNUS_Dein

Location Information					
Facility Name	Grid East (US ft)	Grid North (US ft)	Latitude	Longitude	
Thin Air Pad	1698767.140	14354225.910	39°31'40.5880"N	80°47'34.7850"W	
Slot	Local N (ft)	Local E (ft)	Grid East (US ft)	Grid North (US ft)	Latitude
Slot 2C	164.21	81.35	1698868.460	14354390.050	39°31'42.2090"N
Comment	Gothic Unit 3H				
H&P 317 (RKB) to Ground level (At Slot: Slot 2C)					25.5ft
Mean Sea Level to Ground level (At Slot: Slot 2C)					-1200ft
H&P 317 (RKB) to Mean Sea Level					1225.5ft

Well Profile Data								
Design Comment	MD (ft)	Inc. (")	Az. (°)	TVD (ft)	Local N (ft)	Local E (ft)	DLS (°/100ft)	VS (ft)
Tie On	3450.00	10.590	269.150	3409.18	73.45	-461.35	0.87	-218.50
Proj. to Bottom	3527.00	10.590	269.150	3484.87	73.24	-475.50	0.00	-222.87
Drill Out	3607.00	10.590	269.150	3563.50	73.02	-490.20	0.00	-227.41
End of 3D Arc	3672.24	10.218	276.081	3627.67	73.55	-501.95	2.00	-231.70
Curve KOP	6211.85	10.218	276.081	6127.00	121.27	-849.94	0.00	-421.53
POE	7188.63	73.639	161.155	6863.00	-395.80	-872.30	8.00	92.90
Landing Pt.	7393.13	90.000	161.155	6892.00	-586.72	-807.13	8.00	294.64
BHL	24630.00	90.000	161.155	6892.00	-16899.60	4780.59	0.00	17531.51

Well Data			
Slot	Well	Wellbore	Wellpath
Slot 2C	Gothic Unit 3H	Gothic Unit 3H AWP	Gothic Unit 3H AWP Proj: 24641'
Slot 2C	Gothic Unit 3H	Gothic Unit 3H PWB	Gothic Unit 3H PWB Rev-B.0



API: 47-095-02826-0000
BH Job #: 111653765
Rig: H&P 317
Duration: 3/20/2023-3/25/2023

RECEIVED
Office of Oil and Gas
DCT 18 2023
WV Department of
Environmental Protection

Vertical Section (ft)
Azimuth 161.16° with reference 0.00 N, 0.00 E

Scale 1 inch = 2000



Actual Wellpath Report

Gothic Unit 3H AWP Proj: 24641'

Page 1 of 13



REFERENCE WELLPATH IDENTIFICATION			
Operator	ANTERO RESOURCES CORPORATION	Well	Gothic Unit 3H
Field	Tyler	API	47-095-02826-0000
Facility	Thin Air Pad	Wellbore	Gothic Unit 3H AWB
Slot	Slot 2C		

REPORT SETUP INFORMATION			
Projection System	NAD27 / UTM Zone 17 North, US feet	Software System	WellArchitect® 6.0
North Reference	Grid	User	Edsaryar
Scale	0.999604	Report Generated	4/26/2023 at 6:31:39 PM
Convergence at slot	0.13° East	Database	WA_MPL_EASTERNUS_Defn

WELLPATH LOCATION						
	Local coordinates		Grid coordinates		Geographic coordinates	
	North[ft]	East[ft]	Easting[US ft]	Northing[US ft]	Latitude	Longitude
Slot Location	164.21	81.35	1698868.46	14354390.05	39°31'42.2090"N	80°47'33.7419"W
Facility Reference Pt			1698787.14	14354225.91	39°31'40.5880"N	80°47'34.7850"W
Field Reference Pt			0.00	0.00	0°00'0.0000"	85°29'19.3013"W

WELLPATH DATUM			
Calculation method	Minimum curvature	H&P 317 (RKB) to Facility Vertical Datum	1225.50ft
Horizontal Reference Pt	Slot	H&P 317 (RKB) to Mean Sea Level	1225.50ft
Vertical Reference Pt	H&P 317 (RKB)	H&P 317 (RKB) to Ground Level at Slot (Slot 2C)	25.50ft
MD Reference Pt	H&P 317 (RKB)	Section Origin	N 0.00, E 0.00 ft
Field Vertical Reference	Mean Sea Level	Section Azimuth	161.16°

RECEIVED
 Office of Oil and Gas
 OCT 18 2023
 WV Department of
 Environmental Protection



Actual Wellpath Report

Gothic Unit 3H AWP Proj: 24641'
Page 2 of 13



REFERENCE WELLPATH IDENTIFICATION			
Operator	ANTERO RESOURCES CORPORATION	Well	Gothic Unit 3H
Field	Tyler	API	47-095-02826-0000
Facility	Thin Air Pad	Wellbore	Gothic Unit 3H AWB
Slot	Slot 2C		

WELLPATH DATA (266 stations) † = interpolated, ‡ = extrapolated station																
MD [ft]	Inclination [°]	Azimuth [°]	TVD [ft]	Vert Sect [ft]	North [ft]	East [ft]	Grid East [US ft]	Grid North [US ft]	Latitude	Longitude	Closure Dist [ft]	Closure Dir [°]	DLS ["/100ft]	Build Rate ["/100ft]	Turn Rate ["/100ft]	Comments
0.00†	0.000	146.850	0.00	0.00	0.00	0.00	1698868.46	14354390.05	39°31'42.2090"N	80°47'33.7419"W	0.00	0.000	0.00	0.00	0.00	
25.50	0.000	146.850	25.50	0.00	0.00	0.00	1698868.46	14354390.05	39°31'42.2090"N	80°47'33.7419"W	0.00	0.000	0.00	0.00	0.00	
100.00	0.350	146.850	100.00	0.22	-0.19	0.12	1698868.58	14354389.86	39°31'42.2072"N	80°47'33.7404"W	0.23	146.850	0.47	0.47	0.00	Gyrodota MS Gyro <17-1/2"> (100'-466')
200.00	0.070	185.080	200.00	0.57	-0.51	0.29	1698868.75	14354389.54	39°31'42.2040"N	80°47'33.7383"W	0.58	150.573	0.30	-0.28	38.23	
300.00	0.150	306.160	300.00	0.52	-0.49	0.17	1698868.63	14354389.56	39°31'42.2042"N	80°47'33.7397"W	0.52	160.377	0.20	0.08	121.08	
400.00	0.180	306.140	400.00	0.29	-0.32	-0.06	1698868.40	14354389.73	39°31'42.2059"N	80°47'33.7427"W	0.33	190.177	0.03	0.03	-0.02	
466.00	0.250	337.360	466.00	0.06	-0.13	-0.20	1698868.26	14354389.92	39°31'42.2078"N	80°47'33.7445"W	0.23	237.203	0.20	0.11	47.30	
589.00	1.210	281.710	588.99	-0.87	0.38	-1.57	1698866.89	14354390.43	39°31'42.2129"N	80°47'33.7620"W	1.62	283.746	0.89	0.78	-45.24	APS EM <12-1/4"> (466')(589'-3450')
679.00	1.880	285.180	678.95	-2.18	0.96	-3.93	1698864.53	14354391.01	39°31'42.2187"N	80°47'33.7920"W	4.04	283.791	0.75	0.74	3.86	
769.00	3.090	279.170	768.87	-4.15	1.74	-7.75	1698860.72	14354391.79	39°31'42.2264"N	80°47'33.8408"W	7.94	282.639	1.37	1.34	-6.68	
858.00	5.370	283.370	857.62	-7.49	3.08	-14.17	1698854.30	14354393.13	39°31'42.2398"N	80°47'33.9227"W	14.50	282.275	2.58	2.56	4.72	
948.00	7.060	279.970	947.09	-12.40	5.01	-23.71	1698844.76	14354395.06	39°31'42.2591"N	80°47'34.0444"W	24.24	281.940	1.92	1.88	-3.78	
1037.00	8.930	281.200	1035.22	-18.50	7.30	-35.88	1698832.60	14354397.35	39°31'42.2820"N	80°47'34.1996"W	36.61	281.506	2.11	2.10	1.38	
1132.00	9.550	281.480	1128.99	-26.17	10.30	-50.83	1698817.65	14354400.35	39°31'42.3120"N	80°47'34.3904"W	51.87	281.458	0.65	0.65	0.29	
1226.00	9.400	279.660	1221.70	-33.77	13.14	-66.04	1698802.44	14354403.19	39°31'42.3405"N	80°47'34.5844"W	67.34	281.256	0.36	-0.16	-1.94	
1321.00	9.310	279.630	1315.44	-41.13	15.73	-81.27	1698787.23	14354405.77	39°31'42.3664"N	80°47'34.7786"W	82.77	280.955	0.09	-0.09	-0.03	
1416.00	8.930	278.620	1409.24	-48.19	18.12	-96.13	1698772.37	14354408.16	39°31'42.3903"N	80°47'34.9682"W	97.83	280.675	0.43	-0.40	-1.06	
1510.00	9.850	281.460	1501.98	-55.62	20.81	-111.23	1698757.28	14354410.85	39°31'42.4173"N	80°47'35.1608"W	113.16	280.599	1.10	0.98	3.02	
1604.00	10.010	281.190	1594.57	-63.76	24.00	-127.12	1698741.39	14354414.04	39°31'42.4491"N	80°47'35.3635"W	129.36	280.689	0.18	0.17	-0.29	
1699.00	9.940	280.700	1688.13	-71.93	27.12	-143.28	1698725.24	14354417.16	39°31'42.4803"N	80°47'35.5696"W	145.82	280.718	0.12	-0.07	-0.52	
1793.00	10.970	282.110	1780.57	-80.53	30.50	-159.99	1698708.53	14354420.54	39°31'42.5142"N	80°47'35.7829"W	162.88	280.794	1.13	1.10	1.50	
1887.00	11.510	282.580	1872.77	-90.02	34.42	-177.89	1698690.64	14354424.46	39°31'42.5533"N	80°47'36.0112"W	181.19	280.951	0.58	0.57	0.50	
1982.00	11.530	281.660	1965.86	-99.78	38.40	-196.44	1698672.10	14354428.44	39°31'42.5931"N	80°47'36.2478"W	200.16	281.062	0.19	0.02	-0.97	
2076.00	11.480	279.970	2057.97	-109.06	41.92	-214.85	1698653.69	14354431.96	39°31'42.6283"N	80°47'36.4827"W	218.91	281.041	0.36	-0.05	-1.80	
2170.00	11.280	278.530	2150.12	-117.79	44.91	-233.16	1698635.39	14354434.94	39°31'42.6582"N	80°47'36.7162"W	237.44	280.902	0.37	-0.21	-1.53	
2264.00	11.380	277.990	2242.29	-126.21	47.56	-251.43	1698617.13	14354437.59	39°31'42.6848"N	80°47'36.9493"W	255.89	280.711	0.16	0.11	-0.57	
2359.00	11.290	276.950	2335.43	-134.48	49.99	-269.95	1698598.62	14354440.02	39°31'42.7092"N	80°47'37.1855"W	274.54	280.491	0.24	-0.09	-1.09	
2453.00	11.010	272.840	2427.66	-141.80	51.55	-288.05	1698580.53	14354441.57	39°31'42.7250"N	80°47'37.4165"W	292.62	280.146	0.90	-0.30	-4.37	
2548.00	10.430	280.170	2521.01	-149.32	53.51	-305.57	1698563.01	14354443.54	39°31'42.7449"N	80°47'37.6401"W	310.22	279.933	1.56	-0.61	7.72	
2642.00	10.270	281.350	2613.48	-157.66	56.66	-322.16	1698546.43	14354446.69	39°31'42.7764"N	80°47'37.8517"W	327.11	279.976	0.28	-0.17	1.26	



Actual Wellpath Report

Gothic Unit 3H AWP Proj: 24641'

Page 3 of 13



REFERENCE WELLPATH IDENTIFICATION				
Operator	ANTERO RESOURCES CORPORATION		Well	Gothic Unit 3H
Field	Tyler		API	47-095-02826-0000
Facility	Thin Air Pad		Wellbore	Gothic Unit 3H AWP
Slot	Slot 2C			

WELLPATH DATA (266 stations)																
MD (ft)	Inclination (°)	Azimuth (°)	TVD (ft)	Vert Sect (ft)	North (ft)	East (ft)	Grid East (US ft)	Grid North (US ft)	Latitude	Longitude	Closure Dist (ft)	Closure Dir (°)	DLS (°/100ft)	Build Rate (°/100ft)	Turn Rate (°/100ft)	Comments
2736.00	10.120	280.670	2705.99	-165.95	59.84	-338.49	1698530.10	14354449.87	39°31'42.8082"N	80°47'38.0600"W	343.74	280.026	0.20	-0.16	-0.72	
2831.00	10.110	278.480	2799.52	-173.88	62.62	-354.94	1698513.66	14354452.64	39°31'42.8360"N	80°47'38.2699"W	360.42	280.005	0.40	-0.01	-2.31	
2925.00	9.780	275.390	2892.11	-180.95	64.58	-371.05	1698497.56	14354454.61	39°31'42.8558"N	80°47'38.4754"W	376.63	279.874	0.67	-0.35	-3.29	
3020.00	10.230	278.860	2985.66	-188.18	66.64	-387.42	1698481.19	14354456.66	39°31'42.8765"N	80°47'38.6842"W	393.11	279.760	0.79	0.47	3.65	
3114.00	10.140	278.590	3078.18	-195.87	69.16	-403.85	1698464.77	14354459.19	39°31'42.9018"N	80°47'38.8938"W	409.73	279.718	0.11	-0.10	-0.29	
3208.00	9.800	277.040	3170.76	-203.17	71.38	-419.97	1698448.66	14354461.40	39°31'42.9240"N	80°47'39.0995"W	425.99	279.646	0.46	-0.36	-1.65	
3303.00	9.410	273.570	3264.43	-209.66	72.85	-435.75	1698432.89	14354462.87	39°31'42.9390"N	80°47'39.3008"W	441.79	279.492	0.73	-0.41	-3.65	
3397.00	10.240	270.830	3357.05	-215.41	73.45	-451.77	1698416.87	14354463.47	39°31'42.9453"N	80°47'39.5052"W	457.70	279.235	1.01	0.88	-2.91	
3450.00	10.590	269.150	3409.18	-218.50	73.45	-461.35	1698407.29	14354463.47	39°31'42.9454"N	80°47'39.6275"W	467.16	279.046	0.87	0.66	-3.17	
3591.00	8.810	258.450	3548.17	-223.87	71.09	-484.89	1698383.77	14354461.12	39°31'42.9227"N	80°47'39.9280"W	490.07	278.341	1.78	-1.26	-7.59	APS EM <8-3/4"> (3450')(3591'-6052')
3685.00	9.450	271.540	3640.99	-227.47	69.86	-499.66	1698369.00	14354459.88	39°31'42.9108"N	80°47'40.1165"W	504.52	277.959	2.31	0.68	13.93	
3780.00	11.300	283.700	3734.44	-235.19	72.28	-516.50	1698352.17	14354462.30	39°31'42.9351"N	80°47'40.3313"W	521.53	277.966	3.01	1.95	12.80	
3874.00	10.570	282.920	3826.73	-244.69	76.38	-533.85	1698334.82	14354466.40	39°31'42.9761"N	80°47'40.5527"W	539.29	278.143	0.79	-0.78	-0.83	
3969.00	10.070	284.200	3920.20	-253.80	80.37	-550.39	1698318.29	14354470.39	39°31'43.0158"N	80°47'40.7637"W	556.23	278.308	0.58	-0.53	1.35	
4063.00	8.920	281.070	4012.91	-261.92	83.79	-565.51	1698303.17	14354473.80	39°31'43.0499"N	80°47'40.9565"W	571.69	278.428	1.34	-1.22	-3.33	
4158.00	10.340	286.380	4106.57	-270.51	87.60	-580.92	1698287.77	14354477.62	39°31'43.0880"N	80°47'41.1531"W	587.49	278.576	1.76	1.49	5.59	
4252.00	10.100	285.740	4199.08	-280.05	92.22	-596.95	1698271.75	14354482.23	39°31'43.1340"N	80°47'41.3575"W	604.03	278.782	0.28	-0.26	-0.68	
4347.00	9.210	283.430	4292.73	-288.84	96.24	-612.36	1698256.34	14354486.26	39°31'43.1741"N	80°47'41.5540"W	619.88	278.932	1.02	-0.94	-2.43	
4441.00	10.940	281.500	4385.28	-297.36	99.77	-628.42	1698240.29	14354489.78	39°31'43.2093"N	80°47'41.7589"W	636.29	279.021	1.87	1.84	-2.05	
4536.00	11.780	283.310	4478.42	-307.07	103.80	-646.69	1698222.03	14354493.81	39°31'43.2496"N	80°47'41.9919"W	654.97	279.119	0.96	0.88	1.91	
4631.00	10.900	280.840	4571.56	-316.68	107.72	-664.95	1698203.77	14354497.73	39°31'43.2887"N	80°47'42.2248"W	673.62	279.202	1.06	-0.93	-2.60	
4725.00	11.400	275.860	4663.79	-324.96	110.34	-682.92	1698185.81	14354500.35	39°31'43.3150"N	80°47'42.4541"W	691.78	279.178	1.15	0.53	-5.30	
4819.00	9.170	269.880	4756.28	-331.25	111.27	-699.65	1698169.08	14354501.28	39°31'43.3246"N	80°47'42.6676"W	708.45	279.037	2.63	-2.37	-6.36	
4914.00	9.490	274.200	4850.02	-336.74	111.83	-715.04	1698153.71	14354501.84	39°31'43.3305"N	80°47'42.8639"W	723.73	278.889	0.81	0.34	4.55	
5008.00	11.900	277.930	4942.38	-344.14	113.74	-732.37	1698136.39	14354503.74	39°31'43.3497"N	80°47'43.0850"W	741.14	278.828	2.67	2.56	3.97	
5102.00	12.620	275.150	5034.24	-352.68	116.00	-752.19	1698116.57	14354506.00	39°31'43.3725"N	80°47'43.3380"W	761.08	278.767	0.99	0.77	-2.96	
5197.00	10.620	274.000	5127.29	-360.30	117.54	-771.26	1698097.50	14354507.54	39°31'43.3882"N	80°47'43.5813"W	780.17	278.665	2.12	-2.11	-1.21	
5291.00	11.000	270.590	5219.62	-366.65	118.24	-788.87	1698079.90	14354508.24	39°31'43.3954"N	80°47'43.8060"W	797.68	278.524	0.79	0.40	-3.63	
5386.00	9.350	271.260	5313.12	-372.32	118.50	-805.65	1698063.13	14354508.50	39°31'43.3984"N	80°47'44.0201"W	814.32	278.367	1.74	-1.74	0.71	
5480.00	10.700	271.930	5405.68	-378.03	118.96	-822.01	1698046.78	14354508.96	39°31'43.4033"N	80°47'44.2289"W	830.57	278.235	1.44	1.44	0.71	

RECEIVED
 Office of Oil and Gas
 OCT 18 2023
 WV Department of Environmental Protection



Actual Wellpath Report

Gothic Unit 3H AWP Proj: 24641'

Page 4 of 13



REFERENCE WELLPATH IDENTIFICATION				
Operator	ANTERO RESOURCES CORPORATION		Well	Gothic Unit 3H
Field	Tyler		API	47-095-02826-0000
Facility	Thin Air Pad		Wellbore	Gothic Unit 3H AWB
Slot	Slot 2C			

WELLPATH DATA (266 stations) † = interpolated, ‡ = extrapolated station																
MD [ft]	Inclination [°]	Azimuth [°]	TVD [ft]	Vert Sect [ft]	North [ft]	East [ft]	Grid East [US ft]	Grid North [US ft]	Latitude	Longitude	Closure Dist [ft]	Closure Dir [°]	DLS ["/100ft]	Build Rate ["/100ft]	Turn Rate ["/100ft]	Comments
5575.00	12.410	274.900	5498.76	-385.27	120.13	-840.99	1698027.80	14354510.13	39°31'43.4153"N	80°47'44.4711"W	849.53	278.129	1.91	1.80	3.13	
5669.00	10.760	271.630	5590.84	-392.41	121.24	-859.83	1698008.97	14354511.24	39°31'43.4267"N	80°47'44.7115"W	868.34	278.026	1.89	-1.76	-3.48	
5764.00	11.650	272.780	5684.03	-399.04	121.96	-878.27	1697990.53	14354511.96	39°31'43.4342"N	80°47'44.9469"W	886.70	277.906	0.97	0.94	1.21	
5858.00	9.920	267.440	5776.37	-404.81	122.06	-895.85	1697972.97	14354512.06	39°31'43.4356"N	80°47'45.1711"W	904.12	277.759	2.12	-1.84	-5.68	
5952.00	9.030	277.640	5869.09	-410.37	122.68	-911.25	1697957.58	14354512.68	39°31'43.4421"N	80°47'45.3676"W	919.47	277.667	2.02	-0.95	10.85	
6052.00	8.690	287.860	5967.90	-418.38	126.04	-926.22	1697942.61	14354516.04	39°31'43.4756"N	80°47'45.5586"W	934.75	277.749	1.61	-0.34	10.22	
6097.00	7.740	288.600	6012.44	-422.28	128.05	-932.32	1697936.51	14354518.05	39°31'43.4956"N	80°47'45.6365"W	941.08	277.820	2.12	-2.11	1.64	BH AT Curve <-8-1/2"> (6052')(6097'-24613')
6180.00	10.180	274.930	6094.43	-428.61	130.46	-944.93	1697923.90	14354520.46	39°31'43.5198"N	80°47'45.7973"W	953.90	277.861	3.88	2.94	-16.47	
6275.00	10.040	238.490	6188.05	-430.18	126.85	-960.37	1697908.47	14354516.85	39°31'43.4844"N	80°47'45.9944"W	968.71	277.524	6.63	-0.15	-38.36	
6369.00	13.810	211.140	6280.07	-421.16	112.95	-973.17	1697895.67	14354502.95	39°31'43.3473"N	80°47'46.1582"W	979.71	276.620	7.12	4.01	-29.10	
6463.00	18.280	189.130	6370.47	-400.90	88.76	-981.33	1697887.53	14354478.77	39°31'43.1084"N	80°47'46.2630"W	985.33	275.168	7.95	4.76	-23.41	
6558.00	24.170	177.790	6459.03	-369.06	54.57	-982.94	1697885.91	14354444.60	39°31'42.7705"N	80°47'46.2846"W	984.46	273.178	7.53	6.20	-11.94	
6652.00	30.330	170.280	6542.58	-327.14	11.89	-978.19	1697890.66	14354401.94	39°31'42.3487"N	80°47'46.2251"W	978.26	270.697	7.49	6.55	-7.99	
6664.00†	31.226	170.080	6552.89	-321.07	5.84	-977.14	1697891.71	14354395.89	39°31'42.2888"N	80°47'46.2119"W	977.16	270.343	7.52	7.47	-1.67	Sycamore: 6664' MD
6747.00	37.430	168.930	6621.40	-274.78	-40.15	-968.58	1697900.26	14354349.92	39°31'41.8341"N	80°47'46.1040"W	969.41	267.626	7.52	7.47	-1.39	
6809.00†	42.389	168.383	6668.94	-235.35	-79.14	-960.75	1697908.09	14354310.94	39°31'41.4486"N	80°47'46.0052"W	964.00	265.291	8.02	8.00	-0.88	Middlesex: 6809' MD
6841.00	44.950	168.140	6692.09	-213.43	-100.77	-956.25	1697912.59	14354289.32	39°31'41.2347"N	80°47'45.9485"W	961.55	263.984	8.02	8.00	-0.76	
6936.00	54.600	166.540	6753.37	-141.40	-171.44	-940.31	1697928.53	14354218.68	39°31'40.5359"N	80°47'45.7470"W	955.81	259.667	10.24	10.16	-1.68	
6960.00†	56.912	166.178	6766.87	-121.64	-190.71	-935.63	1697933.21	14354199.41	39°31'40.3453"N	80°47'45.6878"W	954.87	258.479	9.71	9.63	-1.51	Burkett: 6960' MD
7017.00†	62.406	165.389	6795.65	-72.63	-238.38	-923.54	1697945.29	14354151.77	39°31'39.8739"N	80°47'45.5350"W	953.81	255.527	9.71	9.64	-1.39	Tully: 7017' MD
7030.00	63.660	165.220	6801.55	-61.07	-249.59	-920.60	1697948.22	14354140.56	39°31'39.7631"N	80°47'45.4978"W	953.84	254.831	9.71	9.64	-1.30	
7125.00	71.440	163.470	6837.80	26.52	-334.05	-896.89	1697971.92	14354056.13	39°31'38.9278"N	80°47'45.1977"W	957.08	249.572	8.36	8.19	-1.84	
7201.00†	75.826	160.610	6859.22	99.41	-403.39	-874.40	1697994.41	14353986.82	39°31'38.2420"N	80°47'44.9126"W	962.96	245.235	6.81	5.77	-3.76	Marcellus POE: 7201' MD
7219.00	76.870	159.950	6863.46	116.90	-419.85	-868.49	1698000.31	14353970.37	39°31'38.0792"N	80°47'44.8377"W	964.65	244.200	6.81	5.80	-3.67	
7313.00	82.380	161.390	6880.39	209.32	-507.07	-837.91	1698030.88	14353883.18	39°31'37.2165"N	80°47'44.4500"W	979.39	238.819	6.05	5.86	1.53	
7407.00	90.150	162.720	6886.51	303.03	-596.24	-809.04	1698059.74	14353794.05	39°31'36.3345"N	80°47'44.0841"W	1005.01	233.611	8.39	8.27	1.41	
7502.00	91.420	157.180	6885.20	397.96	-685.44	-776.48	1698092.28	14353704.89	39°31'35.4522"N	80°47'43.6712"W	1035.74	228.564	5.98	1.34	-5.83	
7597.00	88.120	159.410	6885.59	492.83	-773.68	-741.36	1698127.40	14353616.68	39°31'34.5793"N	80°47'43.2255"W	1071.54	223.778	4.19	-3.47	2.35	
7691.00	89.660	161.610	6887.41	586.79	-862.27	-710.01	1698158.74	14353528.12	39°31'33.7030"N	80°47'42.8280"W	1116.97	219.469	2.86	1.64	2.34	
7786.00	90.280	161.710	6887.46	681.79	-952.44	-680.11	1698188.62	14353437.98	39°31'32.8112"N	80°47'42.4491"W	1170.34	215.530	0.66	0.65	0.11	

RECEIVED
 Office of Oil and Gas
 WV Department of
 Environmental Protection
 OCT 18 2023



Actual Wellpath Report

Gothic Unit 3H AWP Proj: 24641'

Page 5 of 13



REFERENCE WELLPATH IDENTIFICATION				
Operator	ANTERO RESOURCES CORPORATION		Well	Gothic Unit 3H
Field	Tyler		API	47-095-02826-0000
Facility	Thin Air Pad		Wellbore	Gothic Unit 3H AWB
Slot	Slot 2C			

WELLPATH DATA (266 stations)																
MD [ft]	Inclination [°]	Azimuth [°]	TVD [ft]	Vert Sect [ft]	North [ft]	East [ft]	Grid East [US ft]	Grid North [US ft]	Latitude	Longitude	Closure Dist [ft]	Closure Dir [°]	DLS [°/100ft]	Build Rate [°/100ft]	Turn Rate [°/100ft]	Comments
7880.00	90.800	161.140	6886.57	775.78	-1041.54	-650.17	1698218.55	14353348.92	39°31'31.9299"N	80°47'42.0696"W	1227.82	211.974	0.82	0.55	-0.61	
7975.00	89.570	161.250	6886.26	870.78	-1131.47	-619.55	1698249.16	14353259.03	39°31'31.0404"N	80°47'41.6815"W	1289.99	208.703	1.30	-1.29	0.12	
8069.00	90.090	162.050	6886.54	964.78	-1220.69	-589.96	1698278.74	14353169.85	39°31'30.1580"N	80°47'41.3064"W	1355.78	205.794	1.02	0.55	0.85	
8164.00	89.820	161.680	6886.62	1059.77	-1310.97	-560.39	1698308.30	14353079.60	39°31'29.2650"N	80°47'40.9317"W	1425.72	203.145	0.48	-0.28	-0.39	
8259.00	89.970	162.490	6886.79	1154.76	-1401.36	-531.16	1698337.51	14352989.25	39°31'28.3710"N	80°47'40.5614"W	1498.65	200.758	0.87	0.18	0.85	
8353.00	91.020	161.120	6885.98	1248.74	-1490.66	-501.82	1698366.84	14352899.99	39°31'27.4878"N	80°47'40.1895"W	1572.85	198.605	1.84	1.12	-1.46	
8448.00	90.460	161.070	6884.75	1343.73	-1580.52	-471.04	1698397.61	14352810.16	39°31'26.5990"N	80°47'39.7994"W	1649.22	196.595	0.59	-0.59	-0.05	
8542.00	90.000	162.610	6884.37	1437.72	-1669.84	-441.74	1698426.89	14352720.88	39°31'25.7156"N	80°47'39.4281"W	1727.28	194.818	1.71	-0.49	1.64	
8637.00	90.340	159.630	6884.09	1532.71	-1759.72	-411.01	1698457.62	14352631.04	39°31'24.8266"N	80°47'39.0385"W	1807.08	193.147	3.16	0.36	-3.14	
8732.00	90.370	161.980	6883.50	1627.70	-1849.43	-379.77	1698488.84	14352541.36	39°31'23.9392"N	80°47'38.6426"W	1888.02	191.604	2.47	0.03	2.47	
8826.00	89.910	161.460	6883.27	1721.70	-1938.68	-350.29	1698518.31	14352452.14	39°31'23.0564"N	80°47'38.2689"W	1970.07	190.242	0.74	-0.49	-0.55	
8921.00	90.310	161.600	6883.09	1816.69	-2028.79	-320.19	1698548.39	14352362.07	39°31'22.1652"N	80°47'37.8875"W	2053.90	188.969	0.45	0.42	0.15	
9016.00	90.000	159.270	6882.83	1911.68	-2118.30	-288.38	1698580.19	14352272.60	39°31'21.2799"N	80°47'37.4842"W	2137.84	187.753	2.47	-0.33	-2.45	
9110.00	89.230	160.140	6883.47	2005.65	-2206.46	-255.78	1698612.78	14352184.47	39°31'20.4078"N	80°47'37.0707"W	2221.23	186.612	1.24	-0.82	0.93	
9205.00	90.310	160.650	6883.85	2100.64	-2295.95	-223.90	1698644.65	14352095.02	39°31'19.5226"N	80°47'36.6666"W	2306.84	185.570	1.26	1.14	0.54	
9299.00	90.180	161.950	6883.45	2194.63	-2384.98	-193.77	1698674.77	14352006.02	39°31'18.6420"N	80°47'36.2846"W	2392.84	184.645	1.39	-0.14	1.38	
9394.00	90.520	159.610	6882.87	2289.62	-2474.68	-162.50	1698706.03	14351916.36	39°31'17.7548"N	80°47'35.8882"W	2480.01	183.757	2.49	0.36	-2.48	
9488.00	89.970	160.150	6882.46	2383.60	-2562.94	-130.16	1698738.35	14351828.13	39°31'16.8817"N	80°47'35.4782"W	2566.24	182.907	0.82	-0.59	0.57	
9583.00	88.580	160.430	6883.67	2478.58	-2652.37	-98.13	1698770.37	14351738.74	39°31'15.9972"N	80°47'35.0720"W	2654.18	182.119	1.49	-1.46	0.29	
9677.00	90.890	163.460	6884.10	2572.55	-2741.72	-69.00	1698799.49	14351649.42	39°31'15.1134"N	80°47'34.7030"W	2742.59	181.442	4.05	2.46	3.22	
9771.00	91.080	160.860	6882.48	2666.51	-2831.18	-40.21	1698828.27	14351560.00	39°31'14.2286"N	80°47'34.3382"W	2831.46	180.814	2.77	0.20	-2.77	
9866.00	91.630	160.590	6880.24	2761.48	-2920.83	-8.86	1698859.61	14351470.38	39°31'13.3418"N	80°47'33.9408"W	2920.84	180.174	0.64	0.58	-0.28	
9961.00	89.540	161.120	6879.27	2856.47	-3010.56	22.30	1698890.75	14351380.68	39°31'12.4543"N	80°47'33.5459"W	3010.65	179.576	2.27	-2.20	0.56	
10055.00	90.220	161.260	6879.46	2950.47	-3099.54	52.60	1698921.04	14351291.74	39°31'11.5742"N	80°47'33.1618"W	3099.99	179.028	0.74	0.72	0.15	
10150.00	89.820	160.510	6879.43	3045.47	-3189.30	83.71	1698952.14	14351202.02	39°31'10.6883"N	80°47'32.7674"W	3190.40	178.496	0.89	-0.42	-0.79	
10244.00	89.780	162.200	6879.76	3139.46	-3278.37	113.76	1698982.18	14351112.99	39°31'9.8054"N	80°47'32.3866"W	3280.34	178.013	1.80	-0.04	1.80	
10338.00	91.350	161.210	6878.83	3233.45	-3367.61	143.27	1699011.67	14351023.78	39°31'8.9227"N	80°47'32.0127"W	3370.65	177.564	1.97	1.67	-1.05	
10433.00	89.260	158.650	6878.33	3328.41	-3456.82	175.86	1699044.25	14350934.60	39°31'8.0402"N	80°47'31.5994"W	3461.30	177.088	3.48	-2.20	-2.69	
10527.00	90.890	161.400	6878.20	3422.38	-3545.16	207.97	1699076.35	14350846.30	39°31'7.1665"N	80°47'31.1923"W	3551.25	176.643	3.40	1.73	2.93	
10622.00	90.800	160.540	6876.80	3517.37	-3634.96	238.94	1699107.31	14350756.54	39°31'6.2783"N	80°47'30.7998"W	3642.80	176.239	0.91	-0.09	-0.91	

RECEIVED
Office of Oil and Gas
OCT 18 2023
WV Department of
Environmental Protection



Actual Wellpath Report

Gothic Unit 3H AWP Proj: 24641'

Page 6 of 13



REFERENCE WELLPATH IDENTIFICATION				
Operator	ANTERO RESOURCES CORPORATION		Well	Gothic Unit 3H
Field	Tyler		API	47-095-02826-0000
Facility	Thin Air Pad		Wellbore	Gothic Unit 3H AWB
Slot	Slot 2C			

WELLPATH DATA (266 stations)																
MD [ft]	Inclination [°]	Azimuth [°]	TVD [ft]	Vert Sect [ft]	North [ft]	East [ft]	Grid East [US ft]	Grid North [US ft]	Latitude	Longitude	Closure Dist [ft]	Closure Dir [°]	DLS [°/100ft]	Build Rate [°/100ft]	Turn Rate [°/100ft]	Comments
10716.00	89.630	160.950	6876.45	3611.37	-3723.70	269.94	1699138.29	14350667.84	39°31'5.4005"N	80°47'30.4069"W	3733.47	175.854	1.32	-1.24	0.44	
10810.00	90.060	160.910	6876.70	3705.36	-3812.54	300.65	1699168.99	14350579.03	39°31'4.5218"N	80°47'30.0176"W	3824.37	175.491	0.46	0.46	-0.04	
10905.00	90.430	161.780	6876.30	3800.36	-3902.54	331.04	1699199.37	14350489.06	39°31'3.6315"N	80°47'29.6325"W	3916.56	175.151	1.00	0.39	0.92	
10999.00	90.180	159.720	6875.80	3894.35	-3991.28	362.03	1699230.35	14350400.36	39°31'2.7538"N	80°47'29.2397"W	4007.67	174.817	2.21	-0.27	-2.19	
11093.00	90.490	161.530	6875.25	3988.34	-4079.95	393.21	1699261.52	14350311.72	39°31'1.8767"N	80°47'28.8445"W	4098.86	174.495	1.95	0.33	1.93	
11187.00	90.400	160.370	6874.52	4082.34	-4168.80	423.89	1699292.18	14350222.91	39°31'0.9979"N	80°47'28.4556"W	4190.30	174.194	1.24	-0.10	-1.23	
11282.00	90.860	161.260	6873.47	4177.33	-4258.52	455.11	1699323.39	14350133.23	39°31'0.1105"N	80°47'28.0600"W	4282.77	173.900	1.05	0.48	0.94	
11376.00	89.630	160.470	6873.07	4271.33	-4347.32	485.92	1699354.19	14350044.46	39°30'59.2321"N	80°47'27.6695"W	4374.39	173.622	1.56	-1.31	-0.84	
11471.00	91.230	160.470	6872.36	4366.31	-4436.85	517.68	1699385.93	14349954.97	39°30'58.3465"N	80°47'27.2669"W	4466.95	173.345	1.68	1.68	0.00	
11565.00	89.480	160.100	6871.78	4460.30	-4525.33	549.39	1699417.63	14349866.52	39°30'57.4713"N	80°47'26.8649"W	4558.56	173.078	1.90	-1.86	-0.39	
11660.00	90.030	161.520	6872.18	4555.29	-4615.05	580.61	1699448.84	14349776.84	39°30'56.5838"N	80°47'26.4692"W	4651.43	172.829	1.60	0.58	1.49	
11754.00	89.690	159.570	6872.41	4649.28	-4703.68	611.92	1699480.13	14349688.24	39°30'55.7072"N	80°47'26.0723"W	4743.32	172.588	2.11	-0.36	-2.07	
11849.00	90.430	161.320	6872.31	4744.27	-4793.20	643.71	1699511.92	14349598.76	39°30'54.8217"N	80°47'25.6693"W	4836.23	172.351	2.00	0.78	1.84	
11944.00	89.970	161.230	6871.98	4839.27	-4883.17	674.21	1699542.40	14349508.83	39°30'53.9318"N	80°47'25.2828"W	4929.49	172.139	0.49	-0.48	-0.09	
12038.00	90.310	160.830	6871.75	4933.27	-4972.06	704.77	1699572.95	14349419.97	39°30'53.0526"N	80°47'24.8956"W	5021.76	171.932	0.56	0.36	-0.43	
12133.00	89.660	160.780	6871.78	5028.26	-5061.78	736.00	1699604.17	14349330.29	39°30'52.1651"N	80°47'24.4997"W	5115.01	171.727	0.69	-0.68	-0.05	
12228.00	89.630	158.800	6872.36	5123.23	-5150.92	768.82	1699636.97	14349241.18	39°30'51.2833"N	80°47'24.0837"W	5207.98	171.511	2.08	-0.03	-2.08	
12323.00	89.970	161.170	6872.70	5218.20	-5240.18	801.33	1699669.47	14349151.96	39°30'50.4004"N	80°47'23.6715"W	5301.10	171.306	2.52	0.36	2.49	
12417.00	89.570	160.250	6873.07	5312.20	-5328.90	832.38	1699700.51	14349063.27	39°30'49.5229"N	80°47'23.2779"W	5393.52	171.122	1.07	-0.43	-0.98	
12512.00	89.420	159.320	6873.91	5407.17	-5418.04	865.21	1699733.32	14348974.16	39°30'48.6411"N	80°47'22.8618"W	5486.69	170.927	0.99	-0.16	-0.98	
12607.00	90.650	161.150	6873.85	5502.15	-5507.44	897.33	1699765.43	14348884.80	39°30'47.7568"N	80°47'22.4545"W	5580.06	170.746	2.32	1.29	1.93	
12701.00	89.260	160.110	6873.93	5596.14	-5596.12	928.51	1699796.60	14348796.16	39°30'46.8797"N	80°47'22.0594"W	5672.62	170.579	1.85	-1.48	-1.11	
12796.00	89.720	159.640	6874.77	5691.11	-5685.31	961.19	1699829.27	14348707.00	39°30'45.9973"N	80°47'21.6451"W	5765.99	170.404	0.69	0.48	-0.49	
12891.00	89.940	160.260	6875.05	5786.09	-5774.56	993.76	1699861.83	14348617.79	39°30'45.1146"N	80°47'21.2322"W	5859.44	170.235	0.69	0.23	0.65	
12985.00	89.940	161.890	6875.15	5880.09	-5883.47	1024.25	1699892.30	14348528.91	39°30'44.2351"N	80°47'20.8458"W	5952.26	170.091	1.73	0.00	1.73	
13080.00	90.060	162.070	6875.15	5975.08	-5953.81	1053.64	1699921.68	14348438.61	39°30'43.3416"N	80°47'20.4736"W	6046.32	169.964	0.23	0.13	0.19	
13174.00	89.450	161.350	6875.55	6069.07	-6043.06	1083.13	1699951.16	14348349.40	39°30'42.4588"N	80°47'20.0999"W	6139.36	169.838	1.00	-0.65	-0.77	
13269.00	89.780	161.310	6876.19	6164.07	-6133.06	1113.55	1699981.56	14348259.43	39°30'41.5686"N	80°47'19.7146"W	6233.33	169.709	0.35	0.35	-0.04	
13364.00	89.720	161.470	6876.61	6259.07	-6223.09	1143.86	1700011.87	14348169.44	39°30'40.6781"N	80°47'19.3305"W	6327.34	169.585	0.18	-0.06	0.17	
13459.00	89.910	161.230	6876.91	6354.06	-6313.10	1174.24	1700042.23	14348079.46	39°30'39.7878"N	80°47'18.9456"W	6421.38	169.463	0.32	0.20	-0.25	

RECEIVED
Office of Oil and Gas
OCT 18 2023
WV Department of
Environmental Protection



Actual Wellpath Report

Gothic Unit 3H AWP Proj: 24641'

Page 7 of 13



REFERENCE WELLPATH IDENTIFICATION				
Operator	ANTERO RESOURCES CORPORATION		Well	Gothic Unit 3H
Field	Tyler		API	47-095-02826-0000
Facility	Thin Air Pad		Wellbore	Gothic Unit 3H AWB
Slot	Slot 2C			

WELLPATH DATA (266 stations)																
MD [ft]	Inclination [°]	Azimuth [°]	TVD [ft]	Vert Sect [ft]	North [ft]	East [ft]	Grid East [US ft]	Grid North [US ft]	Latitude	Longitude	Closure Dist [ft]	Closure Dir [°]	DLS [°/100ft]	Build Rate [°/100ft]	Turn Rate [°/100ft]	Comments
13553.00	89.420	161.300	6877.46	6448.06	-6402.12	1204.43	1700072.41	14347990.48	39°30'38.9073"N	80°47'18.5630"W	6514.43	169.345	0.53	-0.52	0.07	
13648.00	90.030	161.730	6877.92	6543.06	-6492.22	1234.55	1700102.52	14347900.42	39°30'38.0161"N	80°47'18.1814"W	6608.55	169.233	0.79	0.64	0.45	
13742.00	89.970	161.920	6877.92	6637.05	-6581.53	1263.87	1700131.83	14347811.14	39°30'37.1328"N	80°47'17.8100"W	6701.78	169.130	0.21	-0.06	0.20	
13837.00	90.090	161.940	6877.87	6732.04	-6671.84	1293.34	1700161.29	14347720.87	39°30'36.2395"N	80°47'17.4368"W	6796.04	169.029	0.13	0.13	0.02	
13932.00	89.510	161.450	6878.20	6827.04	-6762.03	1323.18	1700191.11	14347630.71	39°30'35.3474"N	80°47'17.0588"W	6890.27	168.928	0.80	-0.61	-0.52	
14026.00	89.940	161.620	6878.65	6921.04	-6851.19	1352.95	1700220.87	14347541.59	39°30'34.4655"N	80°47'16.6816"W	6983.50	168.829	0.49	0.46	0.18	
14216.00	90.090	161.860	6878.60	7111.03	-7031.62	1412.48	1700280.38	14347361.23	39°30'32.6809"N	80°47'15.9275"W	7172.09	168.642	0.15	0.08	0.13	
14311.00	89.630	161.510	6878.84	7206.02	-7121.81	1442.33	1700310.22	14347271.07	39°30'31.7888"N	80°47'15.5494"W	7266.40	168.551	0.61	-0.48	-0.37	
14405.00	89.820	162.000	6879.29	7300.01	-7211.08	1471.76	1700339.64	14347181.84	39°30'30.9058"N	80°47'15.1766"W	7359.74	168.465	0.56	0.20	0.52	
14500.00	90.030	161.250	6879.41	7395.01	-7301.24	1501.71	1700369.57	14347091.72	39°30'30.0141"N	80°47'14.7972"W	7454.07	168.378	0.82	0.22	-0.79	
14594.00	89.630	160.960	6879.69	7489.01	-7390.17	1532.15	1700400.00	14347002.82	39°30'29.1344"N	80°47'14.4115"W	7547.33	168.287	0.53	-0.43	-0.31	
14689.00	89.690	161.460	6880.25	7584.01	-7480.11	1562.75	1700430.59	14346912.92	39°30'28.2449"N	80°47'14.0239"W	7641.61	168.199	0.53	0.06	0.53	
14783.00	89.420	160.590	6880.98	7678.00	-7569.00	1593.31	1700461.14	14346824.07	39°30'27.3656"N	80°47'13.6366"W	7734.88	168.113	0.97	-0.29	-0.93	
14878.00	90.220	161.830	6881.28	7773.00	-7658.93	1623.91	1700491.72	14346734.17	39°30'26.4761"N	80°47'13.2489"W	7829.20	168.029	1.55	0.84	1.31	
14972.00	89.630	160.880	6881.41	7867.00	-7748.00	1653.96	1700521.76	14346645.14	39°30'25.5951"N	80°47'12.8682"W	7922.57	167.950	1.19	-0.63	-1.01	
15067.00	90.250	161.570	6881.50	7962.00	-7837.94	1684.54	1700552.33	14346555.23	39°30'24.7054"N	80°47'12.4809"W	8016.92	167.870	0.98	0.65	0.73	
15161.00	89.750	160.590	6881.50	8056.00	-7926.86	1715.02	1700582.79	14346466.35	39°30'23.8259"N	80°47'12.0947"W	8110.27	167.792	1.17	-0.53	-1.04	
15255.00	90.460	162.220	6881.33	8149.99	-8015.95	1744.99	1700612.76	14346377.29	39°30'22.9447"N	80°47'11.7150"W	8203.68	167.719	1.89	0.76	1.73	
15350.00	89.510	161.020	6881.36	8244.99	-8106.10	1774.94	1700642.70	14346287.18	39°30'22.0530"N	80°47'11.3356"W	8298.15	167.649	1.61	-1.00	-1.26	
15445.00	89.880	161.790	6881.86	8339.98	-8196.14	1805.24	1700672.98	14346197.17	39°30'21.1624"N	80°47'10.9518"W	8392.59	167.579	0.90	0.39	0.81	
15539.00	90.120	161.550	6881.86	8433.98	-8285.37	1834.80	1700702.53	14346107.98	39°30'20.2798"N	80°47'10.5774"W	8486.10	167.513	0.36	0.26	-0.26	
15634.00	89.450	160.870	6882.22	8528.98	-8375.30	1865.40	1700733.12	14346018.08	39°30'19.3903"N	80°47'10.1897"W	8580.53	167.444	1.00	-0.71	-0.72	
15729.00	89.720	162.270	6882.91	8623.97	-8465.43	1895.43	1700763.14	14345927.99	39°30'18.4988"N	80°47'9.8093"W	8675.03	167.379	1.50	0.28	1.47	
15824.00	89.450	161.540	6883.60	8718.96	-8555.73	1924.94	1700792.63	14345837.73	39°30'17.6057"N	80°47'9.4356"W	8769.60	167.320	0.82	-0.28	-0.77	
15918.00	90.490	161.760	6883.65	8812.95	-8644.95	1954.53	1700822.21	14345748.55	39°30'16.7232"N	80°47'9.0608"W	8863.14	167.260	1.13	1.11	0.23	
16012.00	89.570	161.900	6883.60	8906.95	-8734.26	1983.84	1700851.51	14345659.27	39°30'15.8398"N	80°47'8.6896"W	8956.72	167.203	0.99	-0.98	0.15	
16201.00	89.260	161.180	6885.53	9095.93	-8913.52	2043.68	1700911.33	14345480.08	39°30'14.0667"N	80°47'7.9316"W	9144.81	167.086	0.41	-0.16	-0.38	
16296.00	89.880	161.040	6886.24	9190.93	-9003.40	2074.44	1700942.07	14345390.23	39°30'13.1777"N	80°47'7.5420"W	9239.29	167.025	0.67	0.65	-0.15	
16390.00	90.680	163.040	6885.78	9284.91	-9092.81	2103.42	1700971.04	14345300.85	39°30'12.2933"N	80°47'7.1749"W	9332.93	166.975	2.29	0.85	2.13	
16485.00	88.920	160.640	6886.11	9379.89	-9183.07	2133.03	1701000.64	14345210.63	39°30'11.4005"N	80°47'6.8000"W	9427.55	166.923	3.13	-1.85	-2.53	

RECEIVED
Office of Oil and Gas
OCT 18 2023
WV Department of
Environmental Protection



Actual Wellpath Report

Gothic Unit 3H AWP Proj: 24641'
Page 8 of 13



REFERENCE WELLPATH IDENTIFICATION				
Operator	ANTERO RESOURCES CORPORATION		Well	Gothic Unit 3H
Field	Tyler		API	47-095-02826-0000
Facility	Thin Air Pad		Wellbore	Gothic Unit 3H AWB
Slot	Slot 2C			

WELLPATH DATA (266 stations)																
MD [ft]	Inclination [°]	Azimuth [°]	TVD [ft]	Vert Sect [ft]	North [ft]	East [ft]	Grid East [US ft]	Grid North [US ft]	Latitude	Longitude	Closure Dist [ft]	Closure Dir [°]	DLS [°/100ft]	Build Rate [°/100ft]	Turn Rate [°/100ft]	Comments
16579.00	90.150	162.230	6886.87	9473.88	-9272.17	2162.95	1701030.55	14345121.57	39°30'10.5192"N	80°47'6.4209"W	9521.11	166.869	2.14	1.31	1.69	
16671.00	89.940	161.820	6886.80	9565.87	-9359.68	2191.34	1701058.93	14345034.09	39°30'9.6537"N	80°47'6.0614"W	9612.79	166.823	0.50	-0.23	-0.45	
16766.00	89.690	159.700	6887.11	9660.86	-9449.37	2222.65	1701090.22	14344944.44	39°30'8.7665"N	80°47'5.6648"W	9707.25	166.764	2.25	-0.26	-2.23	
16860.00	88.580	161.060	6888.53	9754.84	-9537.90	2254.20	1701121.77	14344855.95	39°30'7.8908"N	80°47'5.2649"W	9800.66	166.703	1.87	-1.18	1.45	
16955.00	89.170	158.990	6890.39	9849.80	-9627.16	2286.65	1701154.20	14344766.72	39°30'7.0078"N	80°47'4.8537"W	9895.00	166.639	2.27	0.62	-2.18	
17049.00	89.820	161.000	6891.22	9943.77	-9715.48	2318.80	1701186.34	14344678.44	39°30'6.1342"N	80°47'4.4462"W	9988.37	166.576	2.25	0.69	2.14	
17143.00	89.630	161.190	6891.67	10037.77	-9804.41	2349.26	1701216.78	14344589.54	39°30'5.2545"N	80°47'4.0604"W	10081.94	166.525	0.29	-0.20	0.20	
17238.00	89.660	161.710	6892.26	10132.76	-9894.47	2379.48	1701246.99	14344499.52	39°30'4.3637"N	80°47'3.6776"W	10176.57	166.478	0.55	0.03	0.55	
17333.00	90.220	161.530	6892.36	10227.76	-9984.63	2409.44	1701276.94	14344409.40	39°30'3.4720"N	80°47'3.2982"W	10271.23	166.433	0.62	0.59	-0.19	
17427.00	91.140	162.230	6891.24	10321.75	-10073.96	2438.67	1701306.16	14344320.10	39°30'2.5884"N	80°47'2.9281"W	10364.93	166.392	1.23	0.98	0.74	
17522.00	88.980	162.090	6891.15	10416.73	-10164.38	2467.77	1701335.25	14344229.71	39°30'1.6940"N	80°47'2.5596"W	10459.66	166.353	2.28	-2.27	-0.15	
17616.00	90.580	161.720	6891.51	10510.71	-10253.73	2496.97	1701364.43	14344140.40	39°30'0.8103"N	80°47'2.1899"W	10553.38	166.314	1.75	1.70	-0.39	
17711.00	89.660	161.540	6891.31	10605.71	-10343.89	2526.90	1701394.36	14344050.28	39°29'59.9185"N	80°47'1.8107"W	10648.06	166.272	0.99	-0.97	-0.19	
17806.00	89.850	161.120	6891.71	10700.71	-10433.89	2557.32	1701424.76	14343960.32	39°29'59.0283"N	80°47'1.4255"W	10742.71	166.228	0.49	0.20	-0.44	
17900.00	88.710	161.820	6892.89	10794.70	-10523.01	2587.19	1701454.62	14343871.23	39°29'58.1468"N	80°47'1.0472"W	10836.38	166.187	1.42	-1.21	0.74	
17995.00	90.430	161.020	6893.61	10889.69	-10613.05	2617.45	1701484.87	14343781.23	39°29'57.2562"N	80°47'0.6639"W	10931.05	166.146	2.00	1.81	-0.84	
18089.00	90.770	161.610	6892.62	10983.68	-10702.09	2647.57	1701514.97	14343692.22	39°29'56.3754"N	80°47'0.2825"W	11024.71	166.105	0.72	0.36	0.63	
18184.00	90.340	161.820	6891.70	11078.67	-10792.29	2677.37	1701544.76	14343602.06	39°29'55.4833"N	80°46'59.9050"W	11119.43	166.067	0.50	-0.45	0.22	
18279.00	91.320	161.100	6890.33	11173.66	-10882.34	2707.57	1701574.96	14343512.04	39°29'54.5925"N	80°46'59.5225"W	11214.12	166.028	1.28	1.03	-0.76	
18373.00	89.290	160.560	6889.83	11267.65	-10971.13	2738.44	1701605.81	14343423.29	39°29'53.7143"N	80°46'59.1315"W	11307.73	165.985	2.23	-2.16	-0.57	
18468.00	89.940	161.190	6890.47	11362.65	-11060.88	2769.56	1701636.92	14343333.57	39°29'52.8265"N	80°46'58.7372"W	11402.35	165.943	0.95	0.68	0.66	
18562.00	89.450	161.020	6890.97	11456.65	-11149.81	2800.00	1701667.35	14343244.68	39°29'51.9468"N	80°46'58.3517"W	11496.01	165.903	0.55	-0.52	-0.18	
18657.00	88.830	159.740	6892.39	11551.62	-11239.28	2831.90	1701699.23	14343155.24	39°29'51.0617"N	80°46'57.9476"W	11590.56	165.858	1.50	-0.65	-1.35	
18751.00	90.310	161.190	6893.10	11645.61	-11327.87	2863.33	1701730.65	14343066.69	39°29'50.1855"N	80°46'57.5494"W	11684.14	165.815	2.20	1.57	1.54	
18846.00	89.350	161.870	6893.38	11740.61	-11417.97	2893.42	1701760.73	14342976.62	39°29'49.2943"N	80°46'57.1682"W	11778.88	165.780	1.24	-1.01	0.72	
18941.00	89.940	160.880	6893.97	11835.60	-11507.99	2923.76	1701791.06	14342886.64	39°29'48.4038"N	80°46'56.7840"W	11873.60	165.745	1.21	0.62	-1.04	
19036.00	89.850	161.370	6894.14	11930.60	-11597.88	2954.49	1701821.78	14342796.78	39°29'47.5147"N	80°46'56.3947"W	11968.29	165.708	0.52	-0.09	0.52	
19130.00	89.880	161.570	6894.36	12024.60	-11687.01	2984.37	1701851.64	14342707.69	39°29'46.6331"N	80°46'56.0164"W	12062.03	165.675	0.22	0.03	0.21	
19225.00	89.380	160.130	6894.98	12119.59	-11776.75	3015.53	1701882.79	14342617.99	39°29'45.7454"N	80°46'55.6217"W	12156.69	165.638	1.60	-0.53	-1.52	
19319.00	89.200	161.560	6896.14	12213.58	-11865.54	3046.37	1701913.62	14342529.24	39°29'44.8672"N	80°46'55.2310"W	12250.36	165.601	1.53	-0.19	1.52	

RECEIVED
Office of Oil and Gas
OCT 18 2023
WV Department for
Environmental Protection



Actual Wellpath Report

Gothic Unit 3H AWP Proj: 24641'
Page 9 of 13



REFERENCE WELLPATH IDENTIFICATION				
Operator	ANTERO RESOURCES CORPORATION		Well	Gothic Unit 3H
Field	Tyler		API	47-095-02826-0000
Facility	Thin Air Pad		Wellbore	Gothic Unit 3H AWB
Slot	Slot 2C			

WELLPATH DATA (266 stations)																
MD [ft]	Inclination [°]	Azimuth [°]	TVD [ft]	Vert Sect [ft]	North [ft]	East [ft]	Grid East [US ft]	Grid North [US ft]	Latitude	Longitude	Closure Dist [ft]	Closure Dir [°]	DLS [°/100ft]	Build Rate [°/100ft]	Turn Rate [°/100ft]	Comments
19414.00	89.450	161.020	6897.26	12308.57	-11955.51	3076.84	1701944.08	14342439.30	39°29'43.9772"N	80°46'54.8451"W	12345.09	165.568	0.63	0.26	-0.57	
19509.00	88.950	161.450	6898.59	12403.56	-12045.45	3107.40	1701974.62	14342349.40	39°29'43.0876"N	80°46'54.4581"W	12439.81	165.535	0.69	-0.53	0.45	
19603.00	90.310	160.920	6899.19	12497.56	-12134.42	3137.71	1702004.92	14342260.46	39°29'42.2075"N	80°46'54.0742"W	12533.53	165.502	1.55	1.45	-0.56	
19698.00	90.250	161.230	6898.73	12592.56	-12224.29	3168.52	1702035.72	14342170.63	39°29'41.3186"N	80°46'53.6839"W	12628.25	165.469	0.33	-0.06	0.33	
19792.00	89.820	161.230	6898.67	12686.56	-12313.29	3198.77	1702065.96	14342081.67	39°29'40.4383"N	80°46'53.3009"W	12722.00	165.437	0.46	-0.46	0.00	
19886.00	89.780	161.340	6899.00	12780.56	-12402.32	3228.93	1702096.11	14341992.67	39°29'39.5576"N	80°46'52.9189"W	12815.75	165.407	0.12	-0.04	0.12	
19981.00	89.170	161.090	6899.87	12875.55	-12492.25	3259.52	1702126.68	14341902.77	39°29'38.6680"N	80°46'52.5315"W	12910.49	165.376	0.69	-0.64	-0.26	
20075.00	89.480	161.250	6900.98	12969.55	-12581.21	3289.86	1702157.01	14341813.84	39°29'37.7881"N	80°46'52.1473"W	13004.23	165.346	0.37	0.33	0.17	
20170.00	89.140	160.920	6902.12	13064.54	-12671.08	3320.65	1702187.79	14341724.02	39°29'36.8992"N	80°46'51.7573"W	13098.97	165.315	0.50	-0.36	-0.35	
20264.00	89.480	161.030	6903.25	13158.53	-12759.94	3351.29	1702218.42	14341635.19	39°29'36.0202"N	80°46'51.3692"W	13192.89	165.284	0.38	0.36	0.12	
20358.00	90.120	161.260	6903.58	13252.53	-12848.89	3381.67	1702248.78	14341546.27	39°29'35.1403"N	80°46'50.9845"W	13286.45	165.255	0.72	0.68	0.24	
20453.00	89.350	161.750	6904.02	13347.53	-12938.98	3411.81	1702278.91	14341456.22	39°29'34.2492"N	80°46'50.6029"W	13381.24	165.228	0.96	-0.81	0.52	
20548.00	89.940	161.850	6904.61	13442.52	-13029.23	3441.48	1702308.57	14341366.01	39°29'33.3565"N	80°46'50.2272"W	13476.07	165.204	0.63	0.62	0.11	
20643.00	89.720	161.070	6904.89	13537.52	-13119.30	3471.68	1702338.76	14341275.98	39°29'32.4656"N	80°46'49.8447"W	13570.87	165.178	0.85	-0.23	-0.82	
20737.00	90.220	161.290	6904.94	13631.52	-13208.27	3502.01	1702369.07	14341187.04	39°29'31.5855"N	80°46'49.4607"W	13664.64	165.150	0.58	0.53	0.23	
20832.00	89.720	160.530	6904.99	13726.51	-13298.04	3533.08	1702400.13	14341097.30	39°29'30.6975"N	80°46'49.0672"W	13759.38	165.121	0.96	-0.53	-0.80	
20927.00	89.450	160.830	6905.68	13821.51	-13387.69	3564.51	1702431.55	14341007.69	39°29'29.8108"N	80°46'48.6691"W	13854.10	165.091	0.42	-0.28	0.32	
21021.00	89.480	161.390	6906.56	13915.50	-13476.63	3594.94	1702461.97	14340918.79	39°29'28.9311"N	80°46'48.2837"W	13947.87	165.064	0.60	0.03	0.60	
21116.00	89.600	160.860	6907.32	14010.50	-13566.51	3625.67	1702492.69	14340828.94	39°29'28.0419"N	80°46'47.8945"W	14042.64	165.037	0.57	0.13	-0.56	
21211.00	90.000	161.300	6907.65	14105.50	-13656.38	3656.47	1702523.88	14340739.11	39°29'27.1530"N	80°46'47.5044"W	14137.42	165.011	0.63	0.42	0.46	
21305.00	89.970	161.090	6907.68	14199.50	-13745.36	3686.77	1702553.77	14340650.16	39°29'26.2728"N	80°46'47.1207"W	14231.21	164.986	0.23	-0.03	-0.22	
21400.00	89.660	161.150	6907.98	14294.50	-13835.25	3717.51	1702584.49	14340560.31	39°29'25.3837"N	80°46'46.7314"W	14325.99	164.960	0.33	-0.33	0.06	
21494.00	89.750	161.430	6908.47	14388.50	-13924.28	3747.67	1702614.64	14340471.31	39°29'24.5030"N	80°46'46.3496"W	14419.80	164.936	0.31	0.10	0.30	
21589.00	89.690	160.920	6908.93	14483.49	-14014.20	3778.32	1702645.28	14340381.43	39°29'23.6136"N	80°46'45.9614"W	14514.60	164.911	0.54	-0.06	-0.54	
21684.00	89.540	160.990	6909.57	14578.49	-14104.00	3809.32	1702676.28	14340291.67	39°29'22.7254"N	80°46'45.5688"W	14609.37	164.886	0.17	-0.16	0.07	
21778.00	89.570	160.490	6910.30	14672.49	-14192.73	3840.33	1702707.26	14340202.97	39°29'21.8476"N	80°46'45.1761"W	14703.12	164.859	0.53	0.03	-0.53	
21873.00	89.420	161.260	6911.14	14767.48	-14282.49	3871.45	1702738.37	14340113.25	39°29'20.9598"N	80°46'44.7820"W	14797.89	164.834	0.83	-0.16	0.81	
21968.00	89.200	160.780	6912.28	14862.47	-14372.31	3902.34	1702769.25	14340023.46	39°29'20.0712"N	80°46'44.3907"W	14892.67	164.809	0.56	-0.23	-0.51	
22062.00	89.140	160.870	6913.64	14956.46	-14461.09	3933.22	1702800.11	14339934.72	39°29'19.1931"N	80°46'43.9997"W	14986.44	164.784	0.12	-0.06	0.10	
22157.00	88.980	161.180	6915.20	15051.45	-14550.91	3964.10	1702830.98	14339844.93	39°29'18.3046"N	80°46'43.6086"W	15081.22	164.761	0.37	-0.17	0.33	

RECEIVED
Office of Oil and Gas
OCT 18 2023
WV Department of
Environmental Protection



Actual Wellpath Report

Gothic Unit 3H AWP Proj: 24641'

Page 10 of 13



REFERENCE WELLPATH IDENTIFICATION			
Operator	ANTERO RESOURCES CORPORATION	Well	Gothic Unit 3H
Field	Tyler	API	47-095-02826-0000
Facility	Thin Air Pad	Wellbore	Gothic Unit 3H AWB
Slot	Slot 2C		

WELLPATH DATA (266 stations) † = interpolated, ‡ = extrapolated station																
MD [ft]	Inclination [°]	Azimuth [°]	TVD [ft]	Vert Sect [ft]	North [ft]	East [ft]	Grid East [US ft]	Grid North [US ft]	Latitude	Longitude	Closure Dist [ft]	Closure Dir [°]	DLS [°/100ft]	Build Rate [°/100ft]	Turn Rate [°/100ft]	Comments
22252.00	89.050	161.060	6916.83	15146.43	-14640.79	3994.84	1702861.71	14339755.09	39°29'17.4155"N	80°46'43.2194"W	15176.02	164.738	0.15	0.07	-0.13	
22346.00	88.520	161.060	6918.83	15240.41	-14729.68	4025.34	1702892.20	14339666.23	39°29'16.5363"N	80°46'42.8331"W	15269.80	164.715	0.56	-0.56	0.00	
22440.00	89.570	160.960	6920.39	15334.40	-14818.55	4055.92	1702922.77	14339577.40	39°29'15.6572"N	80°46'42.4459"W	15363.59	164.693	1.12	1.12	-0.11	
22535.00	88.460	160.480	6922.03	15429.38	-14908.21	4087.29	1702954.12	14339487.78	39°29'14.7703"N	80°46'42.0487"W	15458.35	164.668	1.27	-1.17	-0.51	
22629.00	89.200	161.350	6923.95	15523.36	-14997.02	4118.01	1702984.83	14339399.00	39°29'13.8918"N	80°46'41.6595"W	15552.13	164.646	1.21	0.79	0.93	
22724.00	88.370	160.490	6925.96	15618.33	-15086.78	4149.06	1703015.87	14339309.28	39°29'13.0039"N	80°46'41.2664"W	15646.91	164.623	1.26	-0.87	-0.91	
22818.00	89.780	160.620	6927.48	15712.31	-15175.41	4180.35	1703047.14	14339220.69	39°29'12.1272"N	80°46'40.8701"W	15740.66	164.599	1.51	1.50	0.14	
22913.00	89.540	160.670	6928.04	15807.31	-15265.03	4211.83	1703078.62	14339131.09	39°29'11.2406"N	80°46'40.4714"W	15835.43	164.575	0.26	-0.25	0.05	
23007.00	90.150	161.970	6928.30	15901.30	-15354.08	4241.94	1703108.71	14339042.08	39°29'10.3598"N	80°46'40.0902"W	15929.28	164.556	1.53	0.65	1.38	
23102.00	88.800	160.790	6929.17	15996.30	-15444.10	4272.27	1703139.03	14338952.10	39°29'9.4694"N	80°46'39.7062"W	16024.12	164.537	1.89	-1.42	-1.24	
23196.00	89.850	160.750	6930.27	16090.29	-15532.85	4303.23	1703169.97	14338863.39	39°29'8.5915"N	80°46'39.3141"W	16117.91	164.515	1.12	1.12	-0.04	
23290.00	89.720	161.340	6930.63	16184.29	-15621.75	4333.76	1703200.49	14338774.52	39°29'7.7121"N	80°46'38.9275"W	16211.74	164.495	0.64	-0.14	0.63	
23385.00	89.510	161.020	6931.27	16279.28	-15711.67	4364.41	1703231.13	14338684.64	39°29'6.8227"N	80°46'38.5395"W	16306.58	164.476	0.40	-0.22	-0.34	
23479.00	89.820	161.020	6931.81	16373.28	-15800.56	4394.98	1703261.69	14338595.78	39°29'5.9434"N	80°46'38.1524"W	16400.41	164.456	0.33	0.33	0.00	
23574.00	89.820	161.220	6932.11	16468.28	-15890.44	4425.72	1703292.42	14338505.93	39°29'5.0543"N	80°46'37.7631"W	16495.25	164.437	0.21	0.00	0.21	
23763.00	89.720	161.100	6932.87	16657.28	-16069.32	4486.75	1703353.42	14338327.13	39°29'3.2849"N	80°46'36.9904"W	16683.94	164.400	0.08	-0.05	-0.06	
23857.00	90.090	161.360	6933.03	16751.28	-16158.32	4517.00	1703383.66	14338238.16	39°29'2.4046"N	80°46'36.6074"W	16777.80	164.382	0.48	0.39	0.28	
23951.00	89.600	160.810	6933.28	16845.28	-16247.24	4547.47	1703414.12	14338149.28	39°29'1.5250"N	80°46'36.2216"W	16871.64	164.364	0.78	-0.52	-0.59	
24046.00	89.170	161.050	6934.30	16940.27	-16337.02	4578.50	1703445.14	14338059.53	39°29'0.6369"N	80°46'35.8286"W	16966.47	164.344	0.52	-0.45	0.25	
24140.00	89.080	161.140	6935.74	17034.26	-16425.94	4608.96	1703475.58	14337970.65	39°28'59.7573"N	80°46'35.4431"W	17060.31	164.326	0.14	-0.10	0.10	
24235.00	89.050	161.020	6937.29	17129.25	-16515.80	4639.76	1703506.37	14337880.83	39°28'58.8685"N	80°46'35.0531"W	17155.14	164.308	0.13	-0.03	-0.13	
24329.00	89.170	160.780	6938.75	17223.23	-16604.61	4670.51	1703537.11	14337792.05	39°28'57.9899"N	80°46'34.6637"W	17248.96	164.290	0.29	0.13	-0.26	
24424.00	89.850	161.670	6939.56	17318.23	-16694.55	4701.09	1703567.67	14337702.15	39°28'57.1003"N	80°46'34.2766"W	17343.82	164.273	1.18	0.72	0.94	
24519.00	89.880	161.490	6939.78	17413.23	-16784.68	4731.10	1703597.68	14337612.05	39°28'56.2087"N	80°46'33.8966"W	17438.72	164.258	0.19	0.03	-0.19	
24613.00	89.480	161.240	6940.31	17507.22	-16873.75	4761.14	1703627.70	14337523.01	39°28'55.3277"N	80°46'33.5164"W	17532.60	164.243	0.50	-0.43	-0.27	
24641.00	89.480	161.240	6940.56	17535.22	-16900.26	4770.14	1703636.71	14337496.51	39°28'55.0654"N	80°46'33.4024"W	17560.56	164.238	0.00	0.00	0.00	Projected MD at TD: 24641'



Actual Wellpath Report

Gothic Unit 3H AWP Proj: 24641'

Page 11 of 13



REFERENCE WELLPATH IDENTIFICATION			
Operator	ANTERO RESOURCES CORPORATION	Well	Gothic Unit 3H
Field	Tyler	API	47-095-02826-0000
Facility	Thin Air Pad	Wellbore	Gothic Unit 3H AWB
Slot	Slot 2C		

HOLE & CASING SECTIONS - Ref Wellbore: Gothic Unit 3H AWB Ref Wellpath: Gothic Unit 3H AWP Proj: 24641'									
String/Diameter	Start MD [ft]	End MD [ft]	Interval [ft]	Start TVD [ft]	End TVD [ft]	Start N/S [ft]	Start E/W [ft]	End N/S [ft]	End E/W [ft]
20in Conductor	25.50	126.00	100.50	25.50	126.00	0.00	0.00	-0.31	0.20
17.5in Open Hole	126.00	448.00	322.00	126.00	448.00	-0.31	0.20	-0.19	-0.16
13.375in Casing Surface	25.50	428.00	402.50	25.50	428.00	0.00	0.00	-0.26	-0.12
12.25in Open Hole	448.00	3527.00	3079.00	448.00	3484.99	-0.19	-0.16	72.65	-474.79
9.625in Casing Intermediate	25.50	3497.00	3471.50	25.50	3455.42	0.00	0.00	73.10	-469.72
8.75in Open Hole	3527.00	6121.00	2594.00	3484.99	6036.20	72.65	-474.79	128.98	-935.56
8.5in Open Hole	6121.00	24641.00	18520.00	6036.20	6940.56	128.98	-935.56	-16900.26	4770.14
5.5in Casing Production	25.50	24621.00	24595.50	25.50	6940.38	0.00	0.00	-16881.33	4763.71

RECEIVED
 Office of Oil and Gas
 OCT 18 2019
 WV Department of Environmental Protection



Actual Wellpath Report

Gothic Unit 3H AWP Proj: 24641'

Page 12 of 13



REFERENCE WELLPATH IDENTIFICATION			
Operator	ANTERO RESOURCES CORPORATION	Well	Gothic Unit 3H
Field	Tyler	API	47-095-02826-0000
Facility	Thin Air Pad	Wellbore	Gothic Unit 3H AWB
Slot	Slot 2C		

TARGETS								
Name	TVD [ft]	North [ft]	East [ft]	Grid East [US ft]	Grid North [US ft]	Latitude	Longitude	Shape
Gothic Unit 3H POE Rev-3	6863.00	-395.80	-872.30	1697996.51	14353994.41	39°31'38.3170"N	80°47'44.8856"W	point
Gothic Unit 3H BHL Rev-3	6892.00	-17072.09	4819.46	1703686.00	14337324.76	39°28'53.3660"N	80°46'32.7789"W	point
Gothic Unit 3H BHL Rev-4	6892.00	-16899.60	4760.59	1703627.15	14337497.18	39°28'55.0722"N	80°46'33.5242"W	point
Gothic Unit 3H LP Rev-3	6892.00	-586.72	-807.13	1698061.65	14353803.56	39°31'36.4285"N	80°47'44.0595"W	point
Gothic Unit 3H 50' L/R Hard Line Rev-2	7000.00	-8647.70	1944.15	1700811.83	14345745.79	39°30'16.6962"N	80°47'9.1934"W	rectangle
2D Rectangle 17438.6 x 100.								

WELLPATH COMPOSITION - Ref Wellbore: Gothic Unit 3H AWB Ref Wellpath: Gothic Unit 3H AWP Proj: 24641'					
Start MD [ft]	End MD [ft]	Positional Uncertainty Model	Log Name/Comment	Wellbore	Survey Date
25.50	466.00	Gyrodata 2015 - GC+WIR+DPIPE	01_Gyrodata MS Gyro <17-1/2"> (100'-466')	Gothic Unit 3H AWB	1/28/2023
466.00	3450.00	BH NaviTrak (2019) (Axial Corr+HRGM)	02_APS EM <12-1/4"> (466')(589'-3450')	Gothic Unit 3H AWB	1/28/2023
3450.00	6052.00	BH NaviTrak (2019) (Axial Corr+HRGM)	03_APS EM <8-3/4"> (3450')(3591'-6052')	Gothic Unit 3H AWB	3/17/2023
6052.00	24641.00	BH AutoTrak Curve/eXpress (2019) (HRGM, Short spacing)	04_BH AT Curve <8-1/2"> (6052')(6097'-24613')	Gothic Unit 3H AWB	3/17/2023

RECEIVED
Office of Oil and Gas
OCT 18 2023
WV Department of
Environmental Protection



Actual Wellpath Report

Gothic Unit 3H AWP Proj: 24641'

Page 13 of 13



REFERENCE WELLPATH IDENTIFICATION			
Operator	ANTERO RESOURCES CORPORATION	Well	Gothic Unit 3H
Field	Tyler	API	47-095-02826-0000
Facility	Thin Air Pad	Wellbore	Gothic Unit 3H AWB
Slot	Slot 2C		

COMMENTS
<p>Wellpath general comments API: 47-095-02826-0000 BH Job #: 111653765 Rig: H&P 317 Duration: 3/20/2023-3/25/2023 Gyrodata MS Gyro <17-1/2"> (100'-466") APS EM <12-1/4"> (466')(589'-3450") APS EM <8-3/4"> (3450')(3591'-6052") BH AT Curve <8-1/2"> (6052')(6097'-24613") Sycamore: 6664' MD Middlesex: 6809' MD Burkett: 6960' MD Tully: 7017' MD Marcellus POE: 7201' MD Projected MD at TD: 24641'</p>

RECEIVED
 Office of Oil and Gas
 OCT 18 2023
 WV Department of
 Environmental Protection