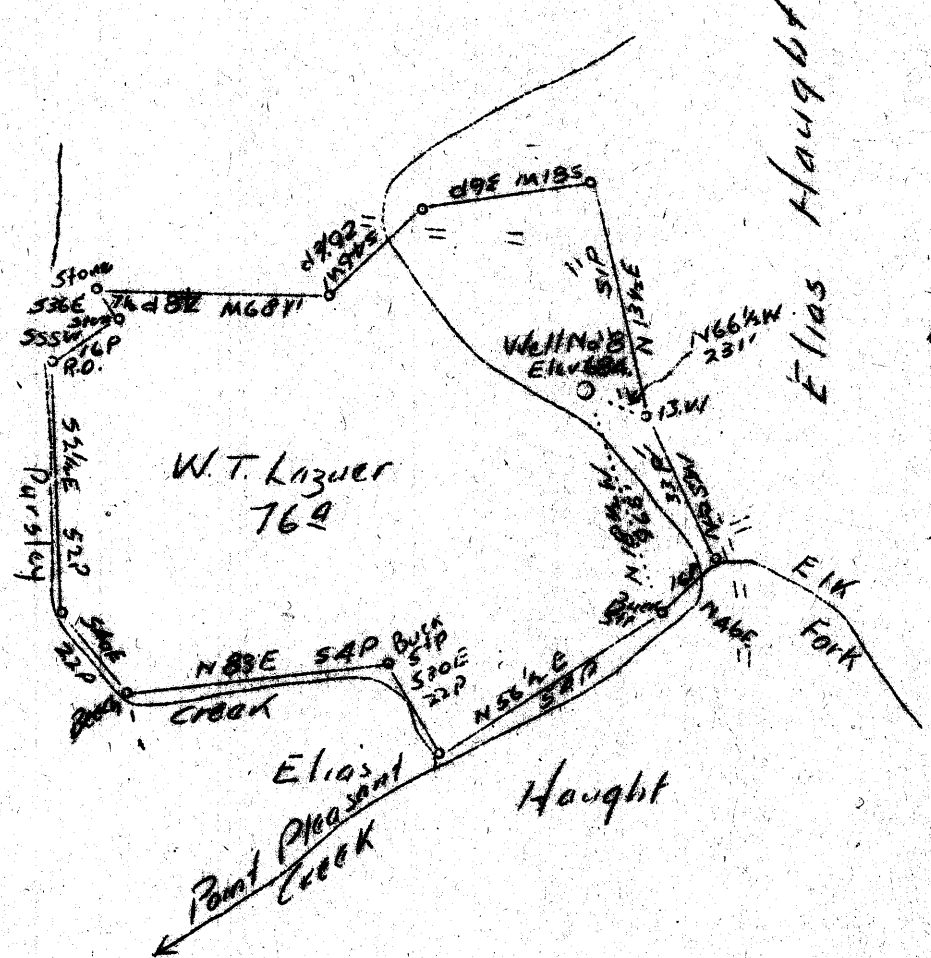


LATITUDE 39°

LONGITUDE 80° 50'

35?



*Zone no good
 390 ft. pits it in
 oil
 Abandonment*

*2.07 21 W
 1.75 + 79 A*

Company	Reno Oil Company	
Address	Sistersville, W. Va.	
Farm	Wm. T. Lazver	
Tract	Acres 76	Lease No.
Well (Farm) No.	Eight	Serial No.
Elevation (Spirit Level)	484.0	
Quadrangle	Now Martinsville	(SC)
County	Tyler	District Ellsworth
Engineer	O. W. Barnhart	
Engineer's Registration No.	Surveyor	
File No.	Drawing No.	
Date	3-11-37	Scale 1" = 40 F.

STATE OF WEST VIRGINIA
 Department of Mines
 OIL AND GAS DIVISION
 Charleston

WELL LOCATION MAP
 File No. TYL-129A

+ Denotes location of well on United States Topographic Maps, scale 1 to 62,500 latitude and longitude lines being represented by border lines as shown.

- Denotes one inch spaces on border lines of original tracing.

Ellsworth District, Tyler County, W. Va.

Reno Oil Co.

Commenced, Oct. 11, 1910; completed, Nov. 7, 1910.

Elevation, 690'.

Oil well.

10" casing, 123'; 8", 834'; 6-5/8", 1230'.

Location: 1/8 mi. up from mouth of Elk Fork of Pleasant Creek.

Shown on 5-H, New Martinsville Quadrangle.

	Top.	Bottom.
Salt Sand	900	
Big Lime	1500	- 1567
Keener Sand	1567	- 1597
Big Injun Sand (oil, 1645')	1597	
Total depth		1652

"Considerable water being pumped in 1931".