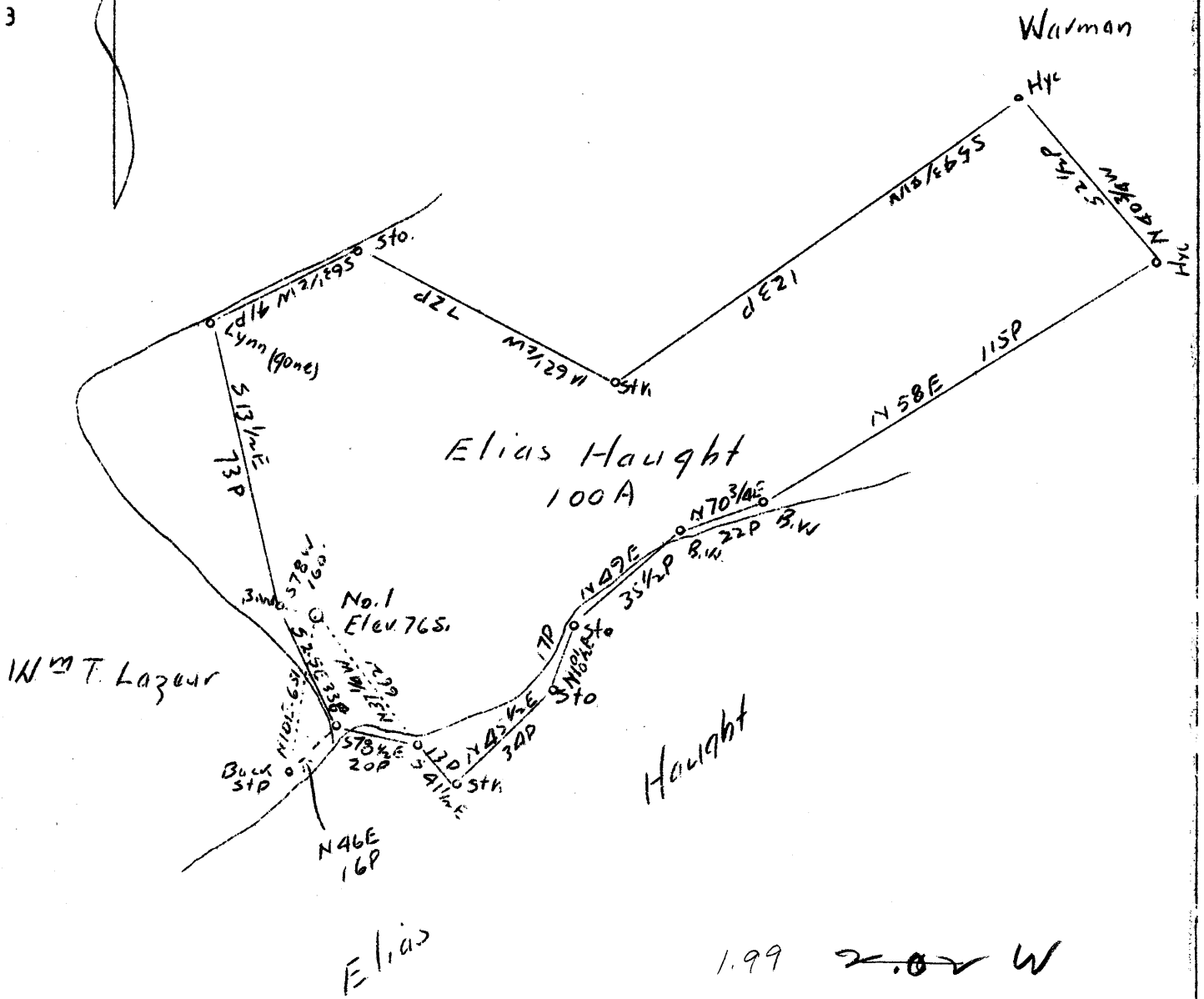
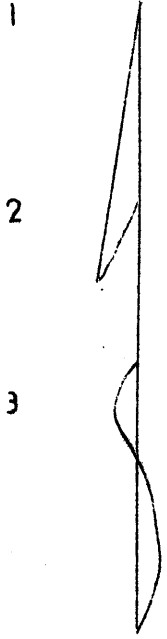


0 1 2 3 LATITUDE 39° 40' 50'
 1 2 3 LONGITUDE 80° 50'

35



abandonment

1.99 ~~2.02~~ W
 1.81 1.82 Q

Company Reno Oil Company
 Address Sistersville, W. Va.
 Farm Elias Haught
 Tract - Acres 100 Lease No. _____
 Well(Farm) No. One Serial No. _____
 Elevation (Spirit Level) 765.0
 Quadrangle New Martinsville (SC)
 County Tyler District Ellsworth
 Engineer O. W. Barnhart
 Engineer's Registration No. _____ Surveyor _____
 Date 3-11-37 Scale 1" - 40 P.

STATE OF WEST VIRGINIA
 Department of Mines
 OIL AND GAS DIVISION
 Charleston

WELL LOCATION MAP
 File No. TYL-130A

+ Denotes location of well on U. S. Topographic Maps, scale 1 to 62,500, latitude and longitude lines being represented by border lines as shown.

- Denotes one inch spaces on border line of original tracing.

RECEIVED

MAY 11 1937

WEST VIRGINIA
GEOLOGICAL SURVEY

130A

Ellsworth District, Tyler County, W. Va.
 Reno Oil Co.
 Completed in 1908.
 Elevation, 739'.
 10" casing, 146'; 8", 840'; 6-5/8", 1340'.
 Shown on 5-H, New Martinsville Quadrangle.

	Top.	Bottom.
Cave	550	
Cow Run Sand	800	- 820
Salt Sand	930	- 1330
Maxton Sand	1390	- 1450
Big Lime	(?) 1555	- 1635
Keener Sand	1635	- 1660
Big Injun Sand (gas, 1698'; oil, 1704')	1660	
Total depth		1716