

39° 32' 30"

LATITUDE

98° 55'

LONGITUDE

30139 • 1.885
0.73W

7'5 OGIS topo location

7.5' loc 1.885 15' loc _____
 0.73W (calc.) _____

Company _____

Farm J W Keller 1

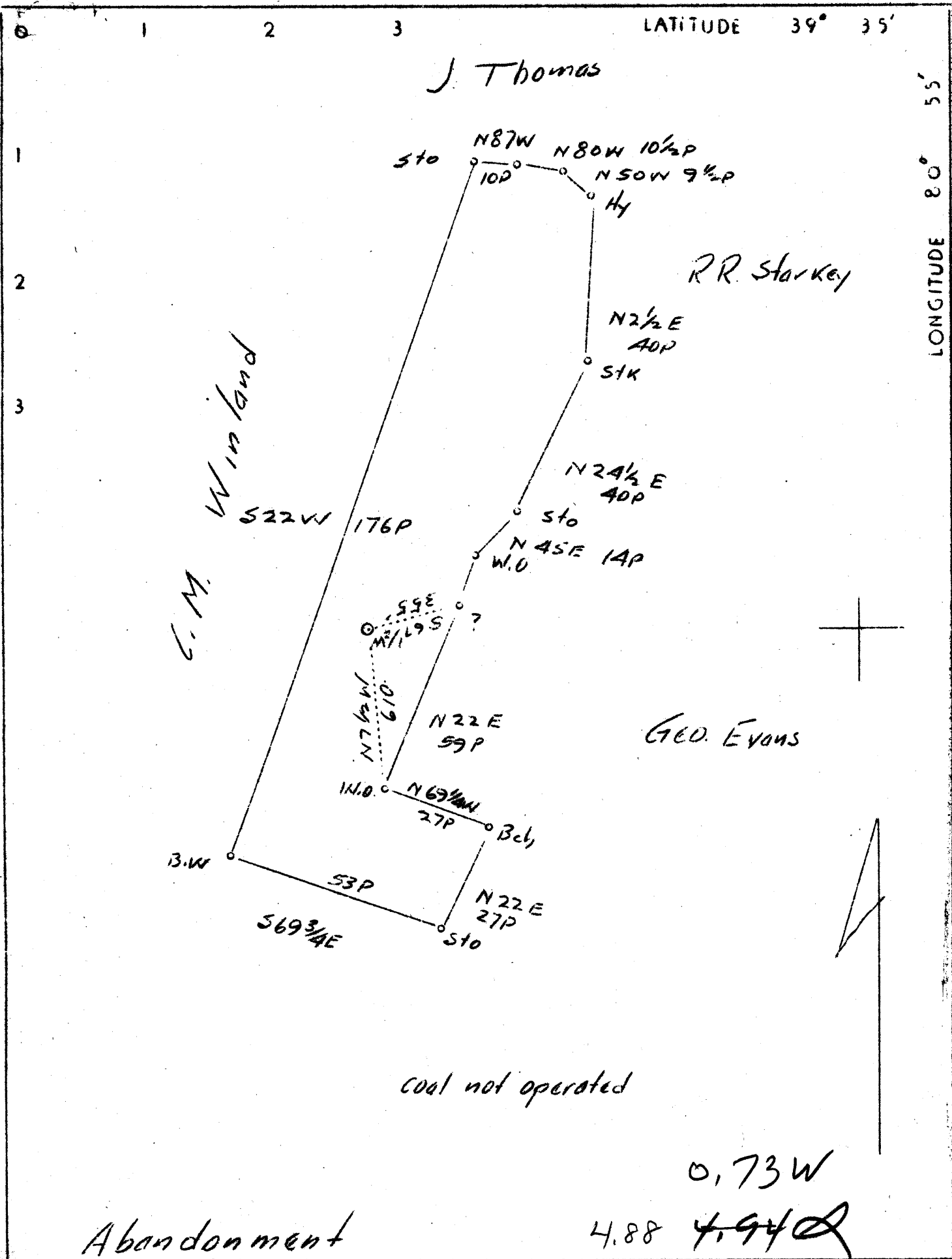
Quad Padon City

county Tyler

District _____

WELL LOCATION MAP

File No. 30139
Tyler



Company	J.H. Beron
Address	Marietta, Ohio
Farm	J.W. Keller
Tract	1 Acres 47 Lease No.
Well (Farm) No.	1 Serial No.
Elevation (Spirit Level)	893
Quadrangle	New Martinsville SW
County	Tyler District Ellis.
Engineer	J.S. Haught
Engineer's Registration No.	Co. Surv.
File No.	Drawing No.
Date	7-30-37 Scale 1"=30 rds.

STATE OF WEST VIRGINIA
Department of Mines
OIL AND GAS DIVISION
CHARLESTON

WELL LOCATION MAP

File No. TYL-139A

† Denotes location of well on United States Topographic Maps, scale 1 to 62,500, latitude and longitude lines being represented by border lines as shown.

— Denotes one inch spaces on border line of original tracing.

RECEIVED
AUG 10 1987
DIRECTOR GENERAL
GENERAL SERVICE

Ellsworth District, Tyler County, W. Va.

By Israel H. Beren, Marietta, Ohio.

On 47 acres.

Surface owned by J. W. Kellar, Sistersville, W. Va.

6 $\frac{5}{8}$ " casing, 1548'.

Abandonment reported to Dept. of Mines July 28, 1937.

Record to RCT from Mrs. Griffith 9-1-37.

	Top.	Bottom.
1st Cow Run Sand	840	- 850
2nd Cow Run Sand	895	- 905
Salt Sand	1100	- 1430
Maxton Sand	1540	- 1595
Keener Sand	1755	- 1780
Total depth		1780

139 A