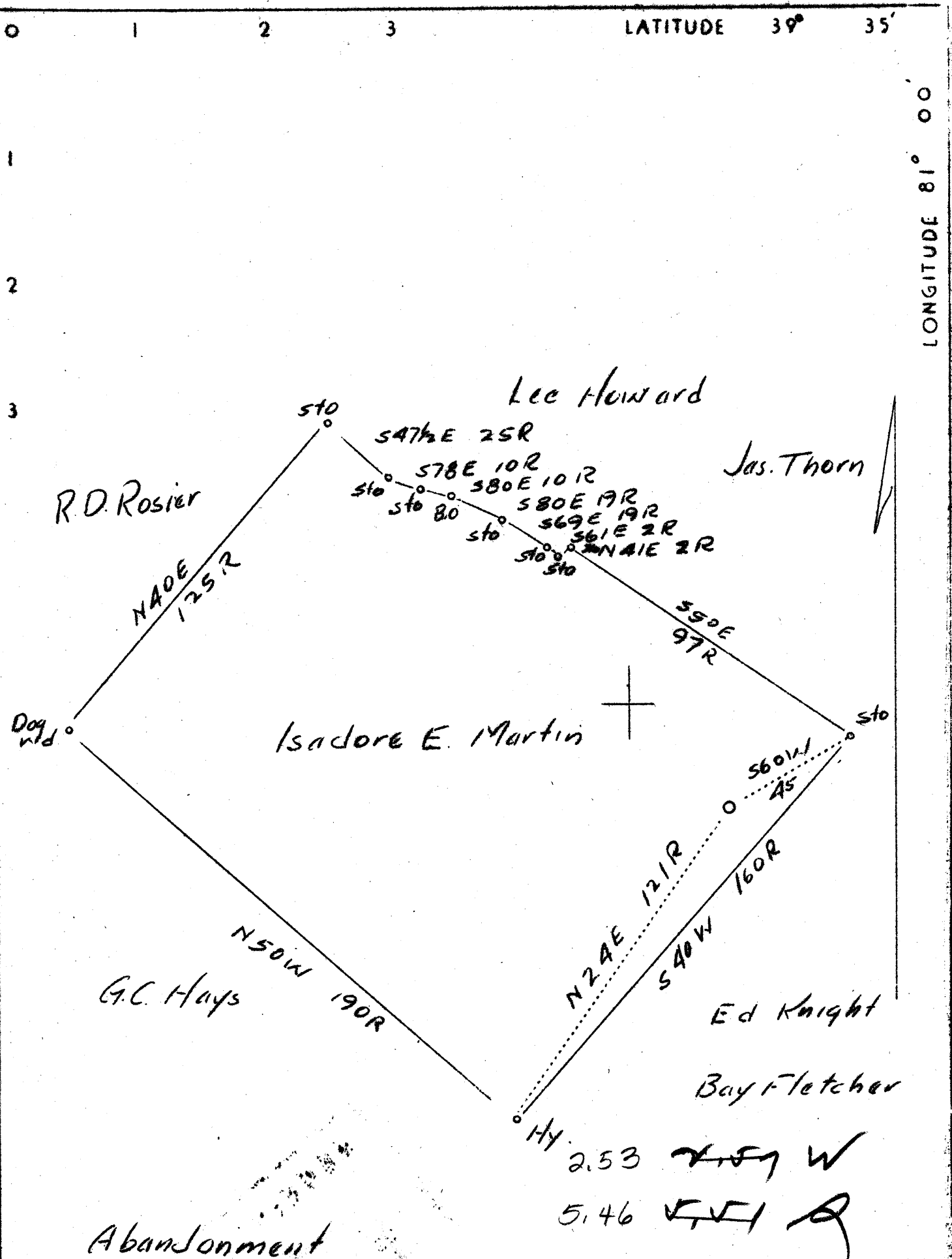


LATITUDE 39° 35'

LONGITUDE 81° 00'



Company Martin Farm Oil Co.
 Address St. Marys, W. Va.
 Farm Isadore E. Martin
 Tract Acres 175 Lease No.
 Well (Farm) No. Serial No.
 Elevation (Spirit Level) 840
 Quadrangle New Matamoras **(SE)**
 County Tyler District Union
 Engineer J.V. Dunbar
 Engineer's Registration No. 65
 File No. C-23-L Drawing No.
 Date Aug. 23, 1937 Scale 1"=40 Rods

STATE OF WEST VIRGINIA
 Department of Mines
 OIL AND GAS DIVISION
 CHARLESTON

WELL LOCATION MAP
 File No. TYL-142A

+ Denotes location of well on United States Topographic Maps, scale 1 to 62,500, latitude and longitude lines being represented by border lines as shown.

— Denotes one inch spaces on border line of original tracing.

RECEIVED
AUG 30 1937
WEST VIRGINIA
GEOLOGICAL SURVEY