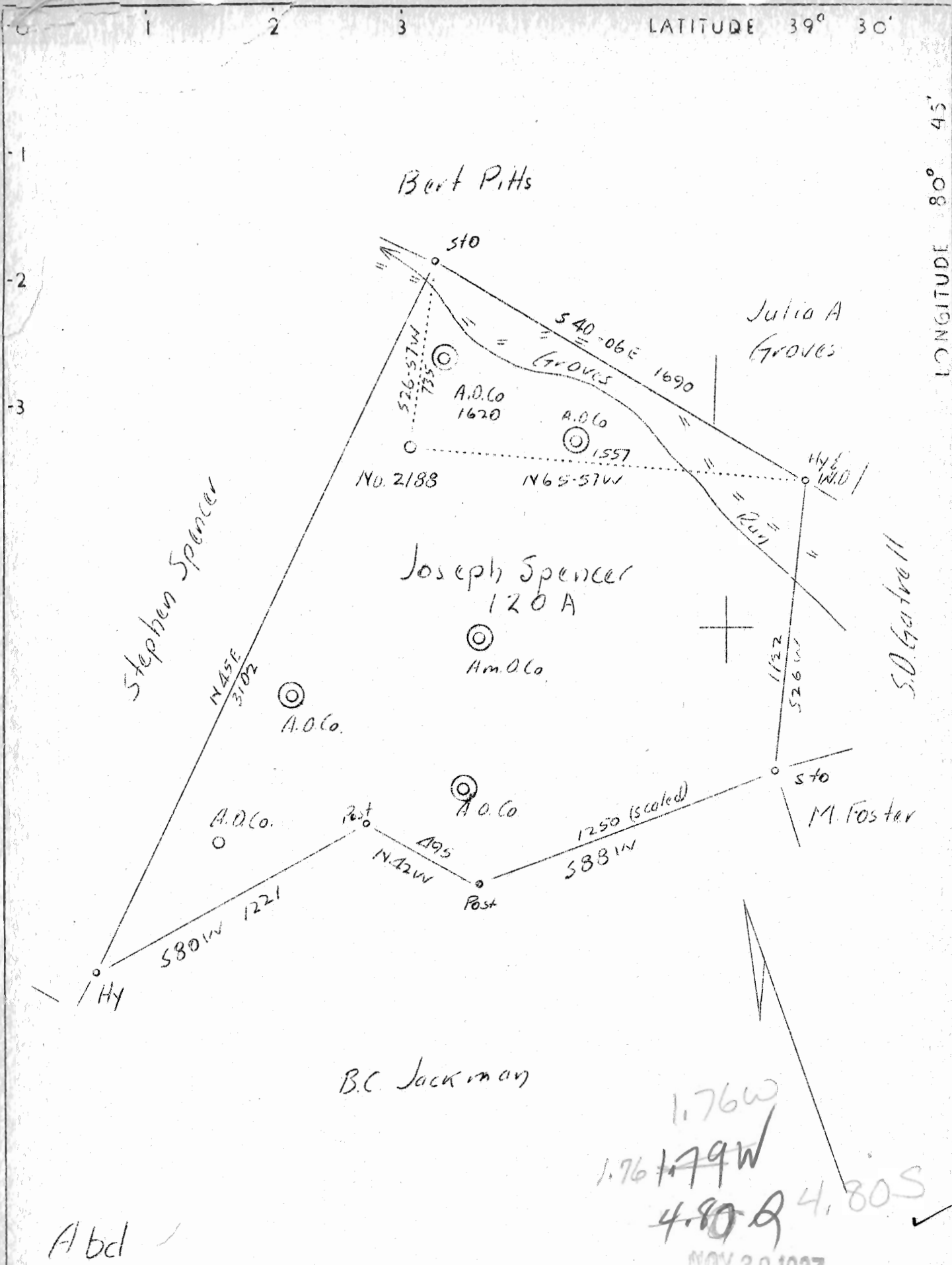


LATITUDE 39° 30'

LONGITUDE 80° 45'



Abcl

B.C. Jackman

1.76W  
 1.76 1.79W  
 4.80 Q 4.80 S ✓

NOV 30 1937

Company	Pittsburgh & W.Va. Gas Co.
Address	608 Union Bank, Clarksburg, W.Va.
Farm	Joseph B. Spencer
Tract	Acres 120 Lease No. 2901
Well ( Farm) No.	2 Serial No. 2188
Elevation ( Spirit Level )	842
Quadrangle	West Union
County	Tyler District McElroy
Engineer	James D. Jeffries
Engineer's Registration No.	
File No.	Drawing No.
Date	11-18-37 Scale 1"-500'

STATE OF WEST VIRGINIA  
 Department of Mines  
 OIL AND GAS DIVISION  
 CHARLESTON

WELL LOCATION MAP

File No. TYL-154A

+ Denotes location of well on United States Topographic Maps, scale 1 to 62,500, latitude and longitude lines being represented by border lines as shown.

- Denotes one inch spaces on border line of original tracing.

WEST VIRGINIA DEPARTMENT OF MINES  
OIL AND GAS DIVISION

257

WELL RECORD

Permit No. TL-154-A

Oil or Gas Well Gas  
(Kind)

Company Pittsburgh & West Va Gas Co.  
Address Clarksburg, West Va.  
Farm J. B. Spencer Acres 120  
Location (waters) West Union - N/E. 4-2  
Well No. 2188 Elev. 842  
District McElroy County Tyler  
The surface of tract is owned in fee by Joseph Spencer  
Address Alma, West Va.  
Mineral rights are owned by J.B.Spencer Hrs.  
F.R.Hickman Address Charleston, W.Va.  
Drilling commenced September 4th, 1907  
Drilling completed October 5th, 1907  
Date shot..... Depth of shot.....  
Open Flow /10ths Water in..... Inch  
..... /10ths Merc. in..... Inch  
Volume..... Cu. Ft.  
Rock Pressure..... lbs..... hrs.  
Oil..... bbls., 1st 24 hrs.  
Fresh water..... feet..... feet  
Salt water..... feet..... feet

Casing and Tubing	Used in Drilling	Left in Well	Packers
Size			
16			Kind of Packer.....
13	<b>16'</b>		
10	<b>203</b>	<b>203</b>	Size of.....
8 1/4	<b>1017</b>	<b>1017</b>	
6 5/8	<b>1790</b>	<b>1790</b>	Depth set.....
5 3/16	<b>1877</b>	<b>1877</b>	
3			Perf. top.....
2			Perf. bottom.....
Liners Used.....			Perf. top.....
			Perf. bottom.....

CASING CEMENTED..... SIZE..... No. FT..... Date.....  
COAL WAS ENCOUNTERED AT **310** FEET **36** INCHES  
**505** FEET **24** INCHES **1352** FEET **36** INCHES  
..... FEET..... INCHES..... FEET..... INCHES

Formation	Color	Hard or Soft	Top	Bottom	Oil Gas or Water	Depth Found	Remarks
Slate	Red	Soft	0	60			
Lime	White	Hard	60	80			
Sand	Gray	Soft	80	115	Water	?	
Slate	Red	Soft	115	125			
Sand	Gray	Hard	125	130			
Slate	Red	Soft	130	140			
Lime	White	Hard	140	160			
Slate	Blue	Soft	160	165			
Lime	White	Hard	165	200			
Lime	Red	Shelly	200	240			
Shells&Slate			240	310			
M.T.Coal			310	313			
Lime	White	Hard	313	323			
"	"	"	323	345	Water	?	
"	"	"	345	375			
Shale	Brown	Soft	375	470			
Slate	White	"	470	500			
Lime	"	Hard	500	505			
Pgh. Coal			505	507			
Lime	White	Hard	507	522			
Slate&Shells	Light	Soft	522	570			
Sand	White	"	570	604			
Slate	"	"	604	607			
Lime	"	Hard	607	620			
Shells&Slate	Light		620	645			
Shells&Slate	"		645	690			
Red Rock			690	778			
Lime	White	Soft	778	800			
Slate	Dark	"	800	810			
Sand	White	Hard	810	840			
Lime	"	"	840	855			
Slate&Shell	"	"	855	880			
Lime	Pink	"	880	900			
Slate	Black	Soft	900	945			
Slate&Shells			945	1010			
"	Light		1010	1030			
Red Rock		Soft	1030	1040			
Sand	White	"	1040	1080			
Slate&Shells	Dark	"	1080	1105			
"	"	"	1105	1125			
Sand	White	Hard	1125	1160			

Formation	Color	Hard or Soft	Top	Bottom	Oil, Gas or Water	Depth Found	Remarks
Slate&Shells	Light	Medium	1160	1200			
Sand	"	Hard	1200	1235			
Slate&Shells	"	"	1235	1280			
Sand	"	"	1280	1300			
Slate	"	Soft	1300	1335			
Slate	Dark	"	1335	1352			
Coal	"	"	1352	1355			
Shells&Slate	Soft	"	1355	1395			
Sand	Light	Medium	1395	1440			
Slate&Shells	Dark	"	1440	1495			
Lime	Gray	Hard	1495	1513			
Sand	White	Soft	1513	1550			
Slate&Shells	Dark	"	1550	1580			
Slate&Shells	Dark	Hard	1580	1630			
Red Rock	Red	Soft	1630	1665			
Lime	Dark	Hard	1665	1680			
Slate	Black	Soft	1680	1700			
Shells&Slate	Dark	"	1700	1730			
Slate&Shells	Black	"	1730	1740			
Big Lime	White	Hard	1740	1835			
Sand (B.I.)	"	"	1835	2005	Gas	1850'	
Slate	Dark	Soft	2005	2025			
Slate&Shells	Light	"	2025	2060			
"	"	"	2060	2150			
Lime	White	Hard	2150	2170			
Lime	"	"	2170	2220			
Slate	Dark	Soft	2220	2240			
Lime	White	Hard	2240	2260			
Slate&Shells	Dark	Soft	2260	2300			
Slate	"	"	2300	2330			
Shells&Slate	Light	"	2330	2425			
Lime Shells	White	Hard	2425	2464			
Slate	Red	Soft	2464	2479			
Slate	Light	"	2479	2559			
Slate&Shells	"	Medium	2559	2575			
Gordon Sand	"	"	2575	2591	Gas	2582'	
Slate	Dark	Soft	2591	2606			
Total Depth				2606			

Date **November 11th, 1937.**, 19.....

APPROVED **Pgh. & West Va Gas Company.**, Owner

By *J. E. Bridger* (Title)

