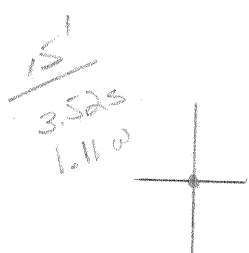


LATITUDE

39°35'

1,000/8



LONGITUDE

7'5 OGIS topo location

7.5' loc _____

15' loc _____
(calc.) _____

Company Hope Const. & Ref Co.

Farm Keener Heirs 2263

Quad New Matamoros (15')

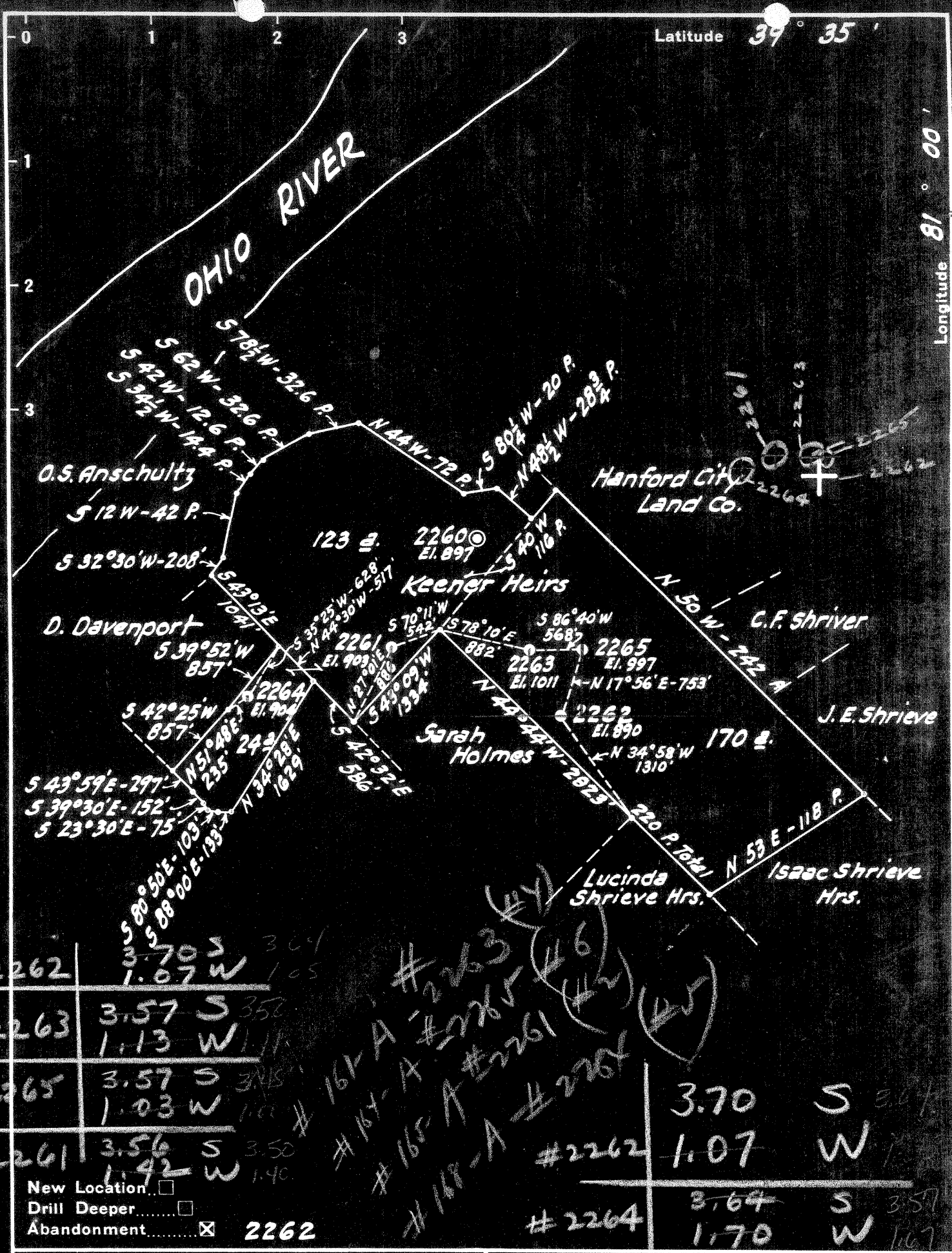
County Texas

District Union

WELL LOCATION MAP

File No. 095-161A

Dec 155A



#2262	3.70 S	1.07 W	
#2263	3.57 S	1.13 W	
#2265	3.57 S	1.03 W	
#2261	3.56 S	1.42 W	
#2262	3.70 S	1.07 W	
#2264	3.64 S	1.70 W	

New Location
 Drill Deeper
 Abandonment

#161-A
 #164-A
 #165-A
 #168-A

Company Hope Constr. & Ref. Co.
 Address Clarksburg, W. Va.
 Farm Keener Heirs
 Tract _____ Acres 317 Lease No. _____
 Well (Farm) No. 7-3-4-5-6 Serial No. 2261-2262-2263
 Elevation (Spirit Level) See Above
 Quadrangle New Matamoras
 County Tyler District Union SE
 Engineer [Signature]
 Engineer's Registration No. 744
 File No. _____ Drawing No. _____
 Date Dec. 3, 1937 Scale 1" = 1320'

STATE OF WEST VIRGINIA
 DEPARTMENT OF MINES
 OIL AND GAS DIVISION
 CHARLESTON

WELL LOCATION MAP
 FILE NO. Tyl-155-A
#2262

+ Denotes location of well on United States Topographic Maps, scale 1 to 62,500, latitude and longitude lines being represented by border lines as shown.
 - Denotes one inch spaces on border line of original tracing.

F.B. 518 P. 17-18-19