

Abd

F.B. 659 Pg 8

Company	Hope Natural Gas Co.	STATE OF WEST VIRGINIA Department of Mines OIL AND GAS DIVISION CHARLESTON WELL LOCATION MAP File No. <u>TYL-162A</u> + Denotes location of well on United States Topographic Maps, scale 1 to 62,500, latitude and longitude lines being represented by border lines as shown. - Denotes one inch spaces on border line of original tracing.
Address	Clarksburg, W.Va.	
Farm	Elmira V. Ferroll	
Tract	Acres 53 Lease No. 23788	
Well (Farm) No.	1 Serial No. 4157	
Elevation (Spirit Level)	963	
Quadrangle	New Martinsville <i>ST</i>	
County	Tyler District Ellsworth	
Engineer	W.M. Bowers	
Engineer's Registration No.	900	
File No.	Drawing No.	
Date	Mar. 2, 1938 Scale 1"-30 P.	

LATITUDE 39° 35'

LONGITUDE 80° 45'

R. D. & J. S. Roberts

C. M. Wilcox

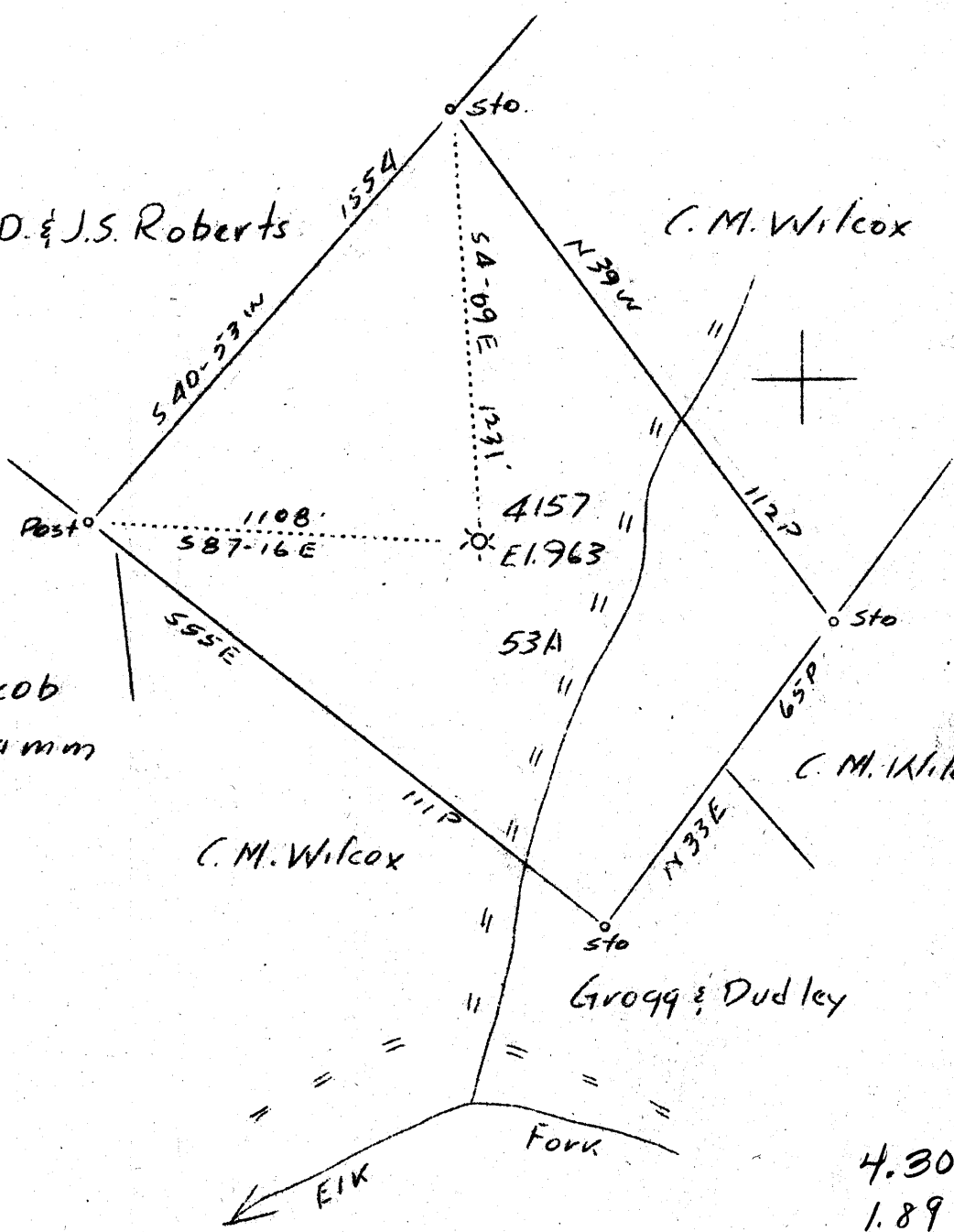
Jacob Stamm

C. M. Wilcox

C. M. Wilcox

Grogg & Dudley

4.30 S
1.89 W



Abd

F.B. 659 Pg 8

Company	Hope Natural Gas Co.
Address	Clarksburg, W.Va.
Farm	Elmira V. Forrell
Tract	Acres 53 Lease No. 23788
Well (Farm) No.	1 Serial No. 4157
Elevation (Spirit Level)	963
Quadrangle	New Martinsville <i>S.F.</i>
County	Tyler District Ellsworth
Engineer	W.M. Bowers
Engineer's Registration No.	900
File No.	Drawing No.
Date	Mar. 2, 1938 Scale 1"=30 F.

STATE OF WEST VIRGINIA
Department of Mines
OIL AND GAS DIVISION
CHARLESTON

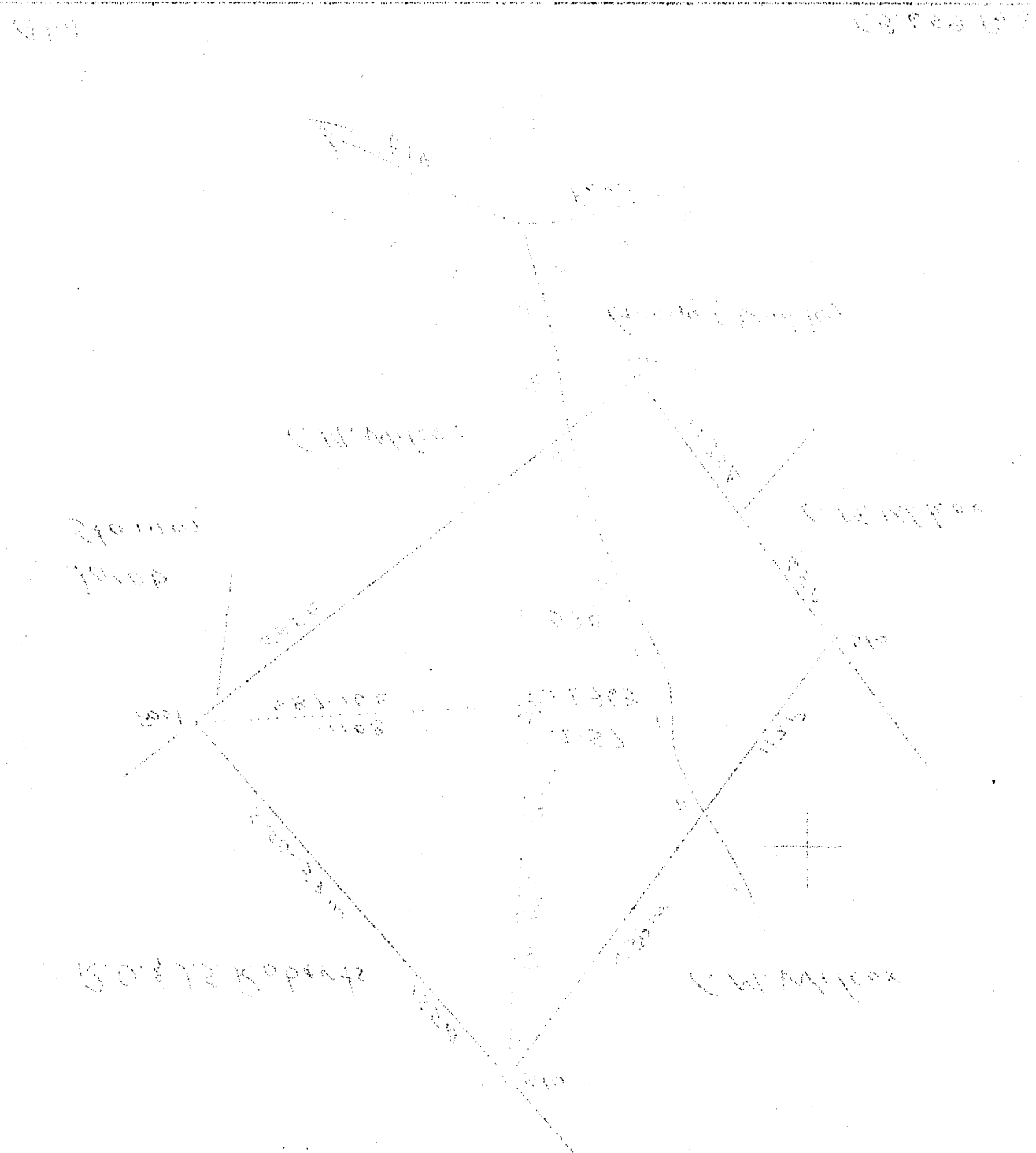
WELL LOCATION MAP
File No. TYL-162A

+ Denotes location of well on United States Topographic Maps, scale 1 to 62,500, latitude and longitude lines being represented by border lines as shown.

- Denotes one inch spaces on border line of original drawing.

Faint, illegible text in the top-left quadrant of the page.

Faint, illegible text in the top-right quadrant of the page.



RECEIVED
MAR 8 1938
U.S. DEPARTMENT OF AGRICULTURE
BUREAU OF ENTOMOLOGY