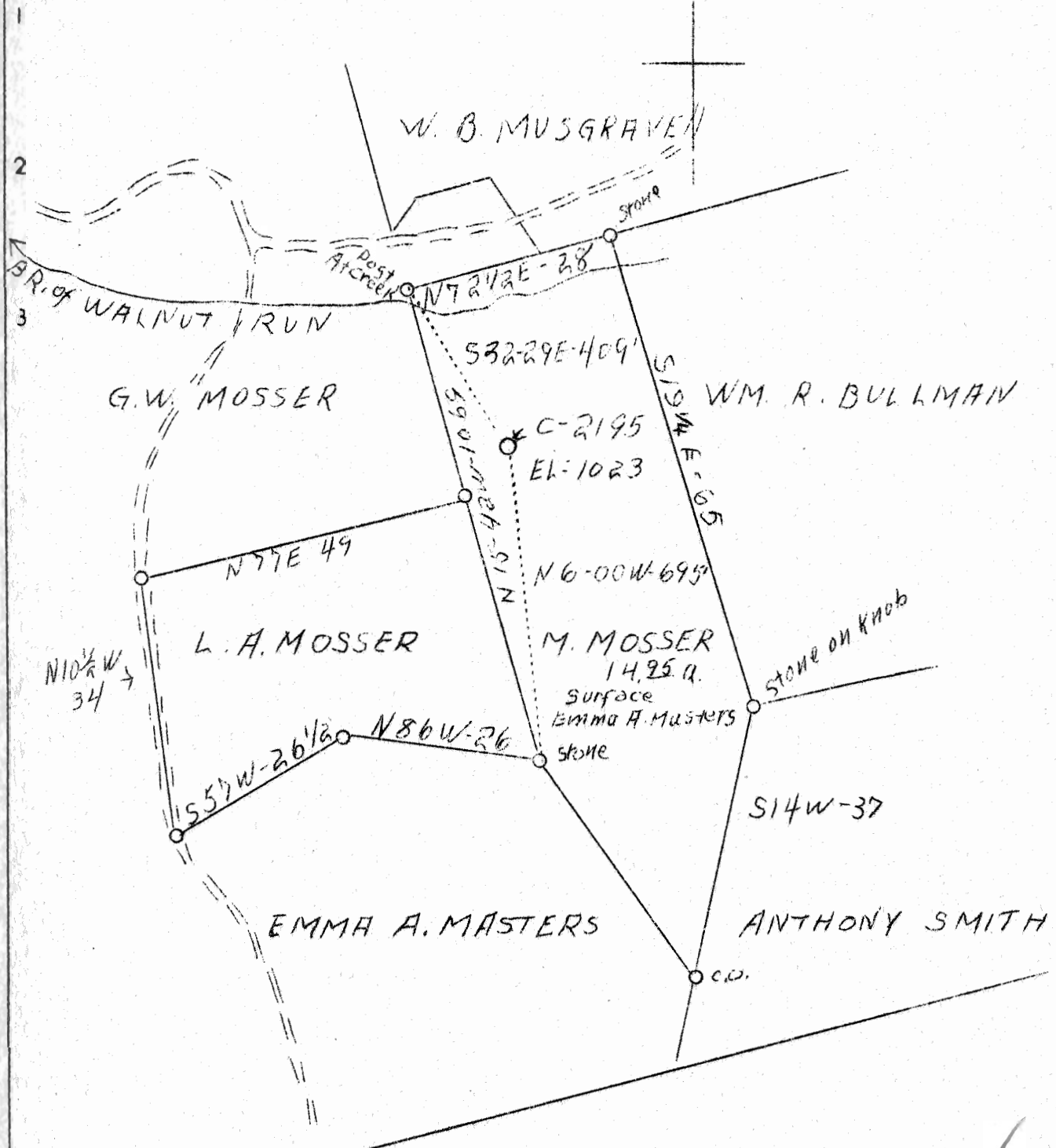


LATITUDE 39° 25'

LONGITUDE 80° 50'



2.83 2.89 W
 1.49 1.49 Q

ABD.

MAY - 9 1938

Company Hope Construction & Ref. Co.

Address Clarksburg, W.Va.

Farm M. Mosser

Tract 1 Acres 14.95 Lease No.

Well (Farm) No. 1 (Serial No. C-2195)

Elevation (Spirit Level) 1023

Quadrangle West Union

Courty Tyler District Meade

Engineer W.M. Bowers

Engineer's Registration No. 900.

File No. Drawing No.

Date Apr. 20, 1938 Scale 1"=20 Poles

STATE OF WEST VIRGINIA
 Department of Mines
 OIL AND GAS DIVISION
 CHARLESTON

WELL LOCATION MAP

File No. TYL-167-A

Denotes location of well on United States Topographic Maps, scale 1 to 62,500, latitude and longitude lines being represented by border lines as shown.

Denotes one inch spaces on border line of original tracing.

WEST VIRGINIA DEPARTMENT OF MINES
OIL AND GAS DIVISION

268

WELL RECORD

Permit No. TKL-167A

Oil or Gas Well Oil
(Kind)

Company Hope Construction & Refining Company
Address Clarksburg, W. Va.,
Farm M. Mosser Acres 15
Location (waters).....
Well No. 2195 Elev. 1023
District Meade County Tyler
The surface of tract is owned in fee by.....
Address.....
Mineral rights are owned by.....
Address.....
Drilling commenced.....
Drilling completed.....
Date shot 12-7-1928 Depth of shot 1983-1997
Open Flow /10ths Water in..... Inch
/10ths Merc. in..... Inch
Volume..... Cu. Ft.
Rock Pressure..... lbs..... hrs.
Oil..... bbls., 1st 24 hrs.
Fresh water None recorded feet..... feet
Salt water In 2nd salt sand. feet..... feet

Casing and Tubing	Used in Drilling	Left in Well	Packers
Size			
16			Kind of Packer.....
13			
10	460	Pulled	Size of.....
8 1/4	1200	Pulled	
6 5/8	1753	1753	Depth set.....
5 3/16			
3			Perf. top.....
2	1990	1990	Perf. bottom.....
Liners Used	893	893	Perf. top.....
			Perf. bottom.....

CASING CEMENTED..... SIZE..... No. FT..... Date
Not cemented
COAL WAS ENCOUNTERED AT 450 FEET 60 INCHES
..... FEET..... INCHES..... FEET..... INCHES
..... FEET..... INCHES..... FEET..... INCHES

Formation	Color	Hard or Soft	Top	Bottom	Oil Gas or Water	Depth Found	Remarks
Pittsburgh Coal			450	455			
Red Rock Cave			625	825			
Cow Run Sand			1100	1120			
First Salt Sand			1220	1350			
Second Salt Sand			1420	1540			
Maxon Sand			1810	1825			
Big Lime			1855	1920			
Keener Sand			1920	1945			
Big Injun Sand			1945	2014	Oil & Gas	1983	
Total Depth			----- 2014				



Formation	Color	Hard or Soft	Top	Bottom	Oil, Gas or Water	Depth Found	Remarks

Date April 29, 1938

APPROVED Hope Construction & Refining Co., Owner

By *[Signature]*
 (Title) Asst. General Supt.

Meade District, Tyler County, W. Va.

By Hope Construction & Refining Co., Clarksburg, W. Va.

On 15 acres.

Elevation, 1023' L.

Shot 12-7-1928, at 1983-1997'.

No fresh water recorded; salt water in 2nd Salt Sand.

10" casing, 460' (pulled); 8 $\frac{1}{2}$ " , 1200' (pulled); 6 $\frac{5}{8}$ " , 1753';

2" tubing, 1990'; liner, 893'.

Casing not cemented.

Coal was encountered at 450-455'.

Oil well. Abandonment reported to Dept. of Mines April 29, 1938.

Record to RCT from Mrs. Griffith May 27, 1938.

	Top.	Bottom.
Pittsburgh Coal	450 -	455
Red rock cave	625 -	825
Cow Run Sand	1100 -	1120
First Salt Sand	1220 -	1350
Second Salt Sand	1420 -	1540
Maxton Sand	1810 -	1825
Big Lime	1855 -	1920
Keener Sand	1920 -	1945
Big Injun Sand (oil and gas, 1983')	1945 -	2014
Total depth		2014