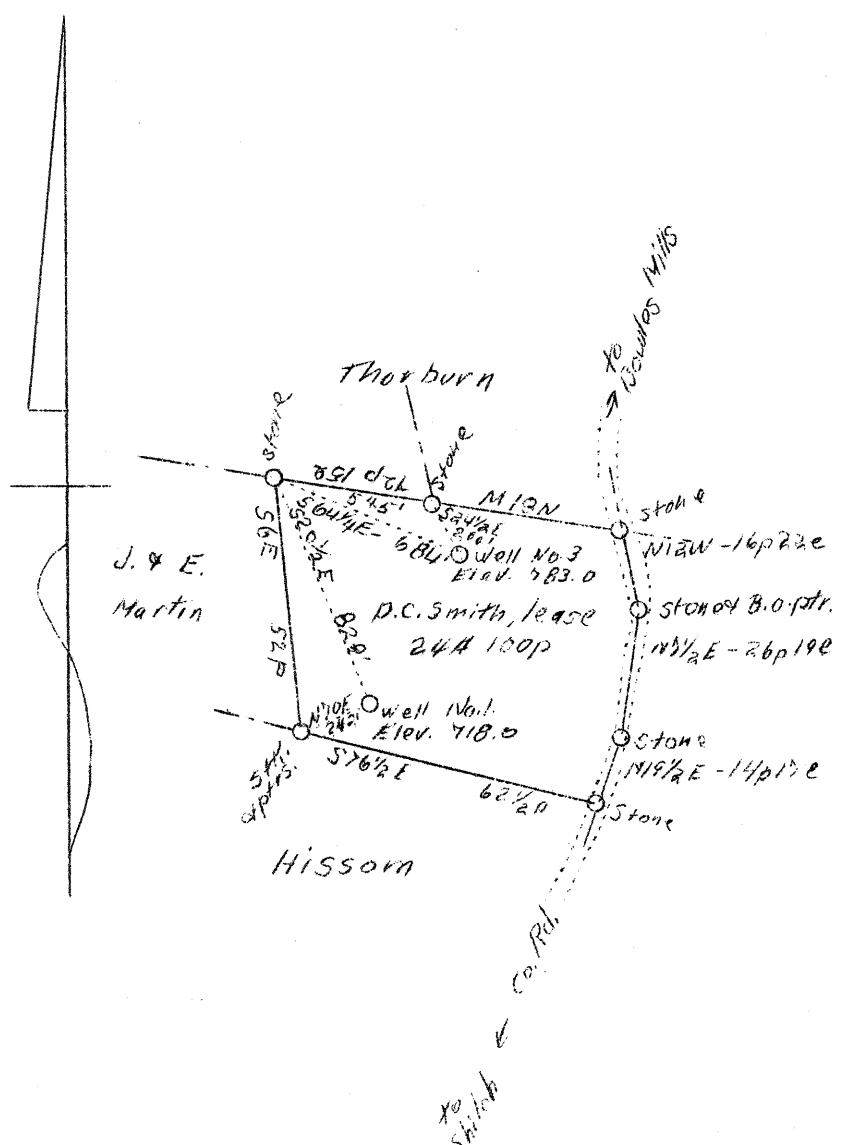


LATITUDE 39° 30'

LONGITUDE 81° 00'



23 57 }  
0.28 ? W }  
  
22 57 }  
0.21 ? W }

*ABD.*

Company	Amco Oil Co.
Address	Sistersville, W. Va.
Farm	D.C. Smith, Mrs. lease
Acres	24-100P
Wells (Farm) No.	1 and 3
Elevation (Spirit Level) No. 1	718
	No. 3 783
Quadrangle	St. Marys N.E.
County	Tyler
District	Union
Engineer	C. M. Barnhart
Engineer's Registration No.	Surveyor
Date	June 25, 1953
Scale	1" = 40P

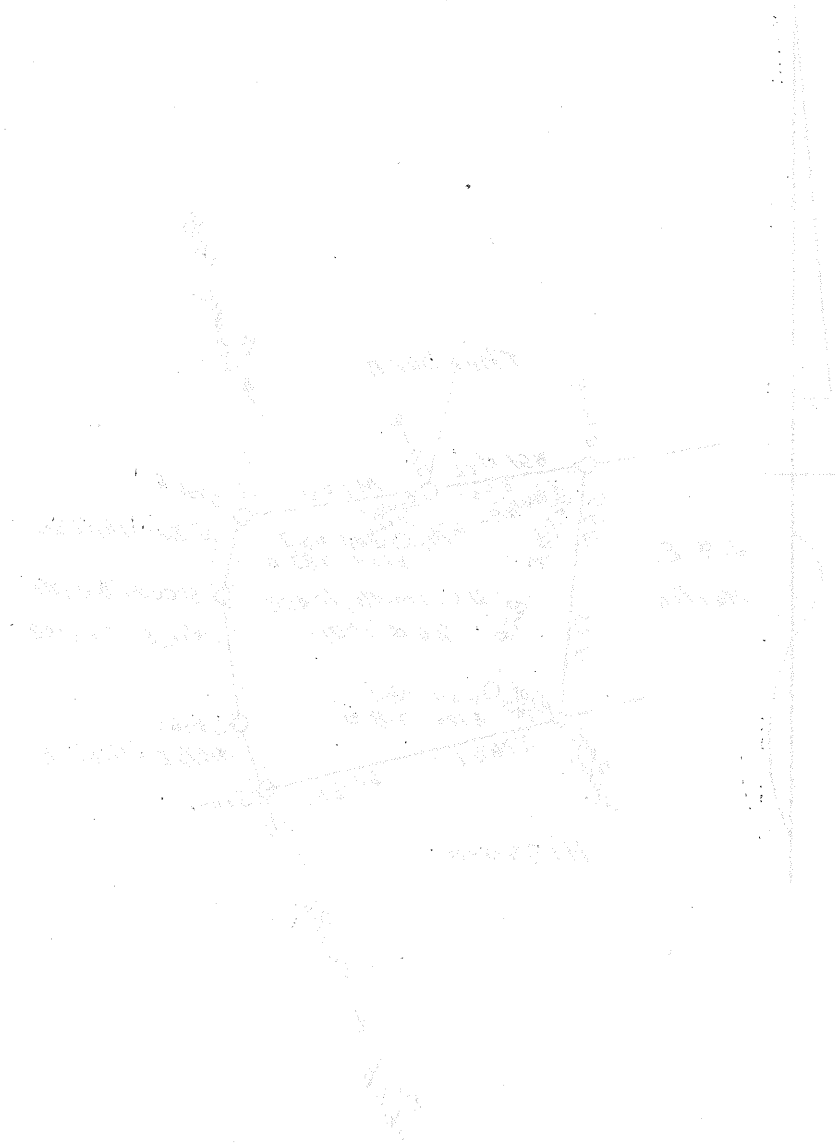
STATE OF WEST VIRGINIA  
 Department of Mines  
 OIL AND GAS DIVISION  
 Charleston

WELL LOCATION MAP

File No. TY-1754-176-A

x Denotes location of well on U.S. Topographic Maps, scale 1 to 62,500 latitude and longitude lines being represented by border lines as shown

- Denotes one inch spaces on border line of original tracing/



1578

RECEIVED  
 JUL 11 1938  
 U.S. GEOLOGICAL SURVEY

**RECEIVED**  
**JUL 11 1938**  
 U.S. GEOLOGICAL SURVEY