

*ABD.*

23 57  
0.28 ? W }  
22 57 3  
0.21 ? W }

Company	Acme Oil Co.
Address	Bistersville, W. Va.
Farm	D.C. Smith, Mrs. lease
Acres	24-100P
Wells (Farm) No. 1 and 3	
Elevation (Spirit Level) No. 1	718
	No. 3 783
Quadrangle	St. Marys NE,
County	Tyler
District	Union
Engineer	C. S. Barnhart
Engineer's Registration No.	Surveyor
Date	June 25, 1933
Scale	1" = 40P

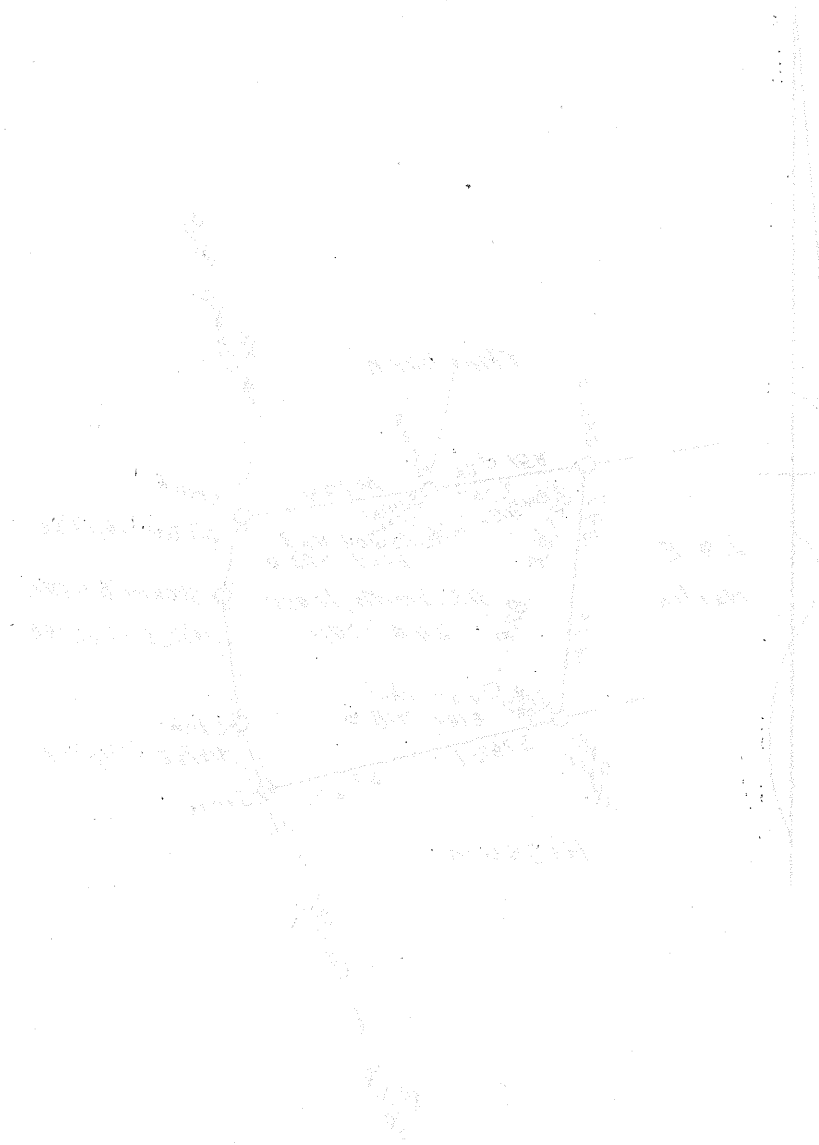
STATE OF WEST VIRGINIA  
Department of Mines  
Oil and Gas Division  
Charleston

WELL LOCATION MAP

File No. TY-175 & 176-A

x Denotes location of well on U.S. Topographic Maps, scale 1 to 62,500 latitude and longitude lines being represented by border lines as shown

- Denotes one inch spaces on border line of original tracing/



1938

Faint, illegible text, possibly a list or a set of instructions, located in the bottom left quadrant of the page.

Faint, illegible text, possibly a list or a set of instructions, located in the bottom right quadrant of the page.

**RECEIVED**  
**JUL 11 1938**  
 THE ALABAMA  
 HISTORICAL COMMISSION