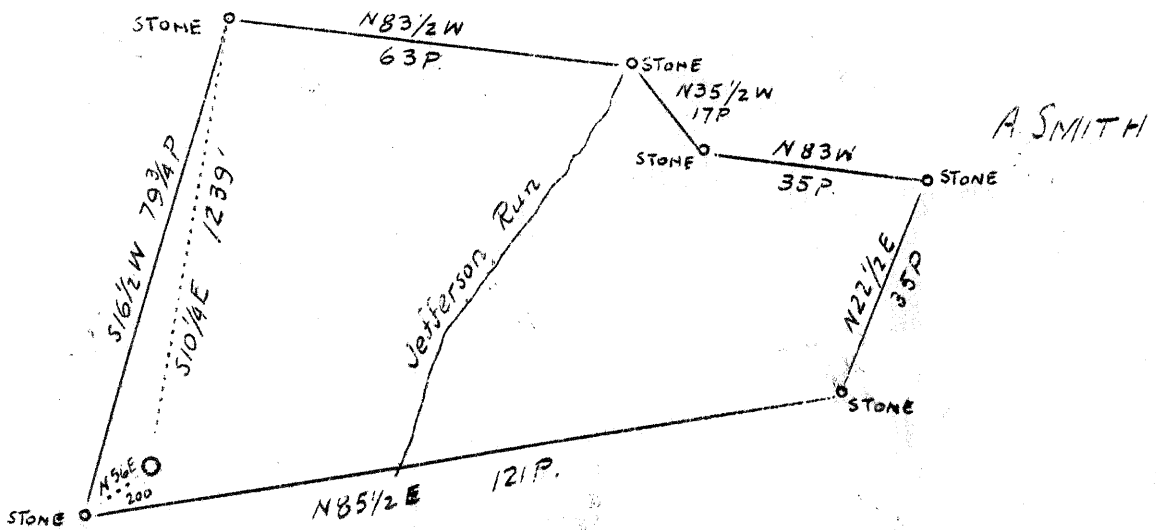


LATITUDE 39° 25'

LONGITUDE 80° 50'

M. I. C.

W. R. SMITH



W. R. SMITH

W-2  
S. 1.04

ABANDONMENT

Company	American Oil & Dev. Co.
Address	Sistersville, W. Va.
Farm	J. M. Smith
Acres	47-1/2
Elevation (SP)	881.5
Well (Farm) No.	One
Quadrangle	West Union
County	Tyler
District	Centerville
Engineer	J. S. Haught
Eng. Reg. No.	County Surveyor
Date	August 6, 1938
Scale	1" = 30 rods

STATE OF WEST VIRGINIA  
Department of Mines  
OIL & GAS DIVISION  
Charleston

WELL LOCATION MAP

File No. TYL-179A

x Denotes location of well on U. S. Topographic Maps, scale 1 to 62,500, latitude and longitude lines being represented by border lines as shown.

- Denotes one inch spaces on border line of original tracing.

