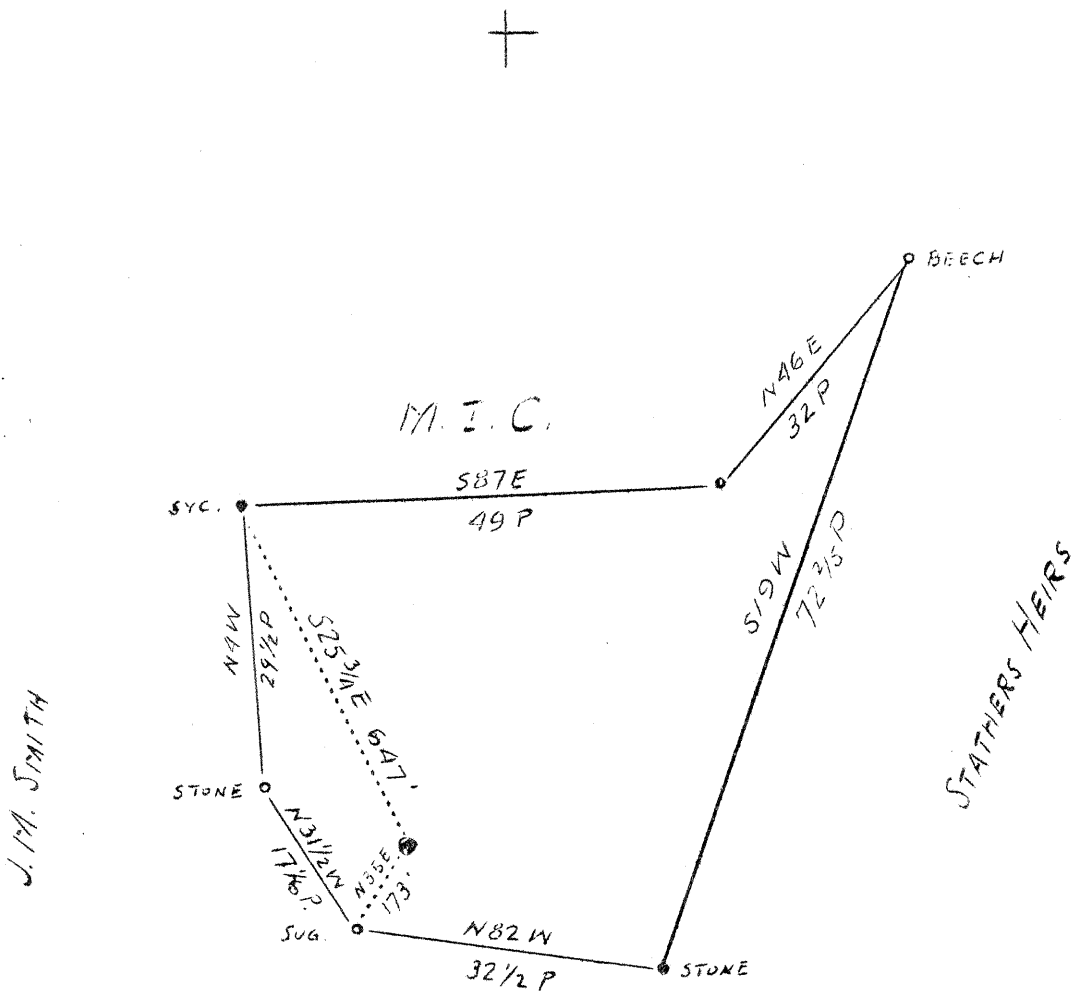


LATITUDE 39° 25'

LONGITUDE 80° 45'



4.43 W - 4.48
5 - .81

ABANDONMENT

Company	American Oil & Dev. Co.
Address	Sistersville, W. Va.
Farm	J. M. L. Smith
Tract	One
Acres	15
Well (Farm) No.	One
Elevation (SP)	930'
Quadrangle	West Union
County	Tyler
District	Centerville
Engineer	J. S. Haught
Eng. Reg. No.	Co. Surveyor
Date	August 5, 1938
Scale	1" = 100 yds.

STATE OF WEST VIRGINIA
Department of Mines
OIL & GAS DIVISION
Charleston

WELL LOCATION MAP
File No. TYL-180A

x Denotes location of well on U. S. Topographic Maps, scale 1 to 62,500, latitude and longitude lines being represented by border lines as shown.

- Denotes one inch spaces on border line of original tracing.

