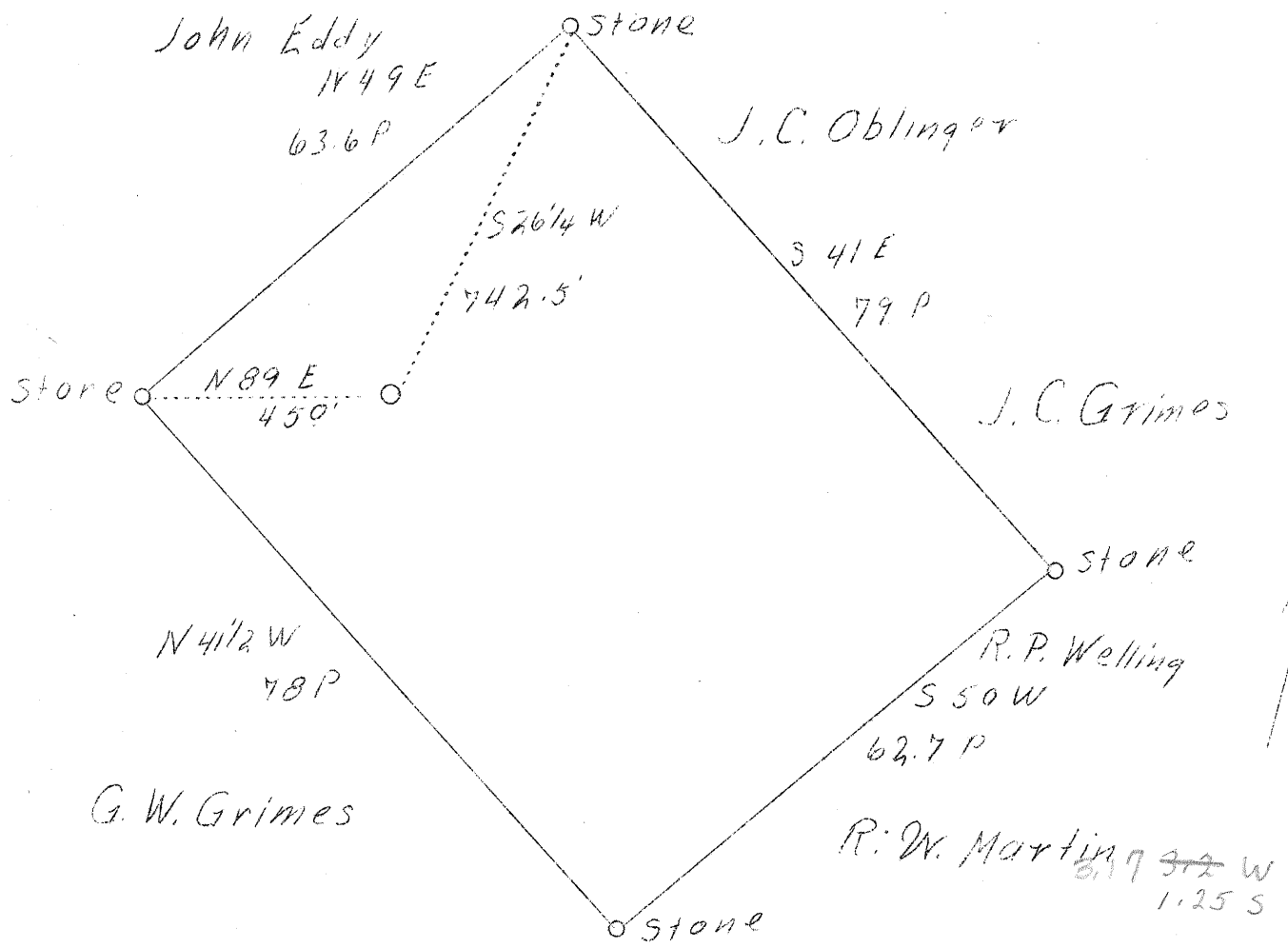


LATITUDE 39° 35'

LONGITUDE 80° 00'



ABD.

Company	Pittsburgh Oil & Gas Co.	STATE OF WEST VIRGINIA
Address	Pittsburgh, Pa.	Department of Mines
Farm	J. C. Grimes	OIL & GAS DIVISION
Tract	One	Charleston
Acres	30	
Well (Farm) No.	One	WELL LOCATION MAP
Elevation (SP)	799.4'	File No. <u>TYI-187-A</u>
Quadrangle	New Martinsville <i>SC</i>	
County	Tyler	
District	Ellsworth	
Engineer	J. S. Haught	x Denotes location of well on U. S. Topographic Maps, scale 1 to 62,500, latitude and longitude lines being represented by border lines as shown.
Eng. Reg. No.	E - S.T.C.	- Denotes one inch spaces on border line of original tracing.
Date	(ct. 25, 1938	
Scale	1" - 20 rods	

