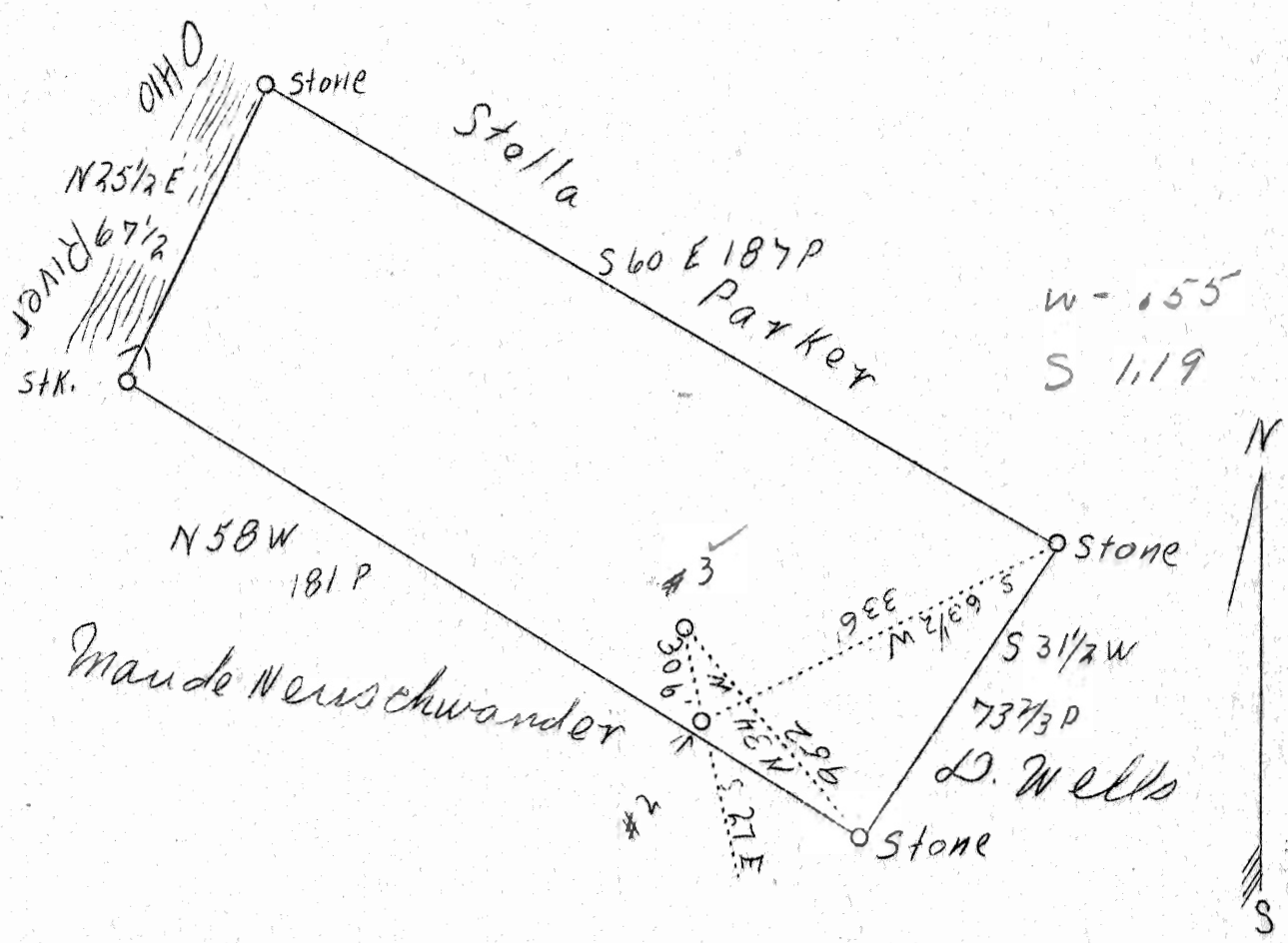


LATITUDE 39° 30'

LONGITUDE 81° 05'



ABD. # 243

Company	C.R. Mitchell	STATE OF WEST VIRGINIA
Address	Toronto, Ohio Route 2 Box 21	Department of Mines
Farm	J.D. Holmes	OIL AND GAS DIVISION
Tract	1	Charleston
Acres	48	
Well (Farm) No.	3	WELL LOCATION MAP
Elev. (Spirit Level)	625'	File No. <u>TY-190-191-A</u>
Quadrangle	St. Marys <i>N.C.</i>	
County	Tyler	x Denotes location of well on U.S. Topographic maps, scale 1 to 62,500, latitude and longitude lines being represented by border lines as shown.
District	Union	- Denotes one inch spaces on border line of original tracing.
Eng.	J.S. Haught	
Eng. Reg. No.	C.S.T.C.	
Date	11/9/38	
Scale	1" = 40 Rods	