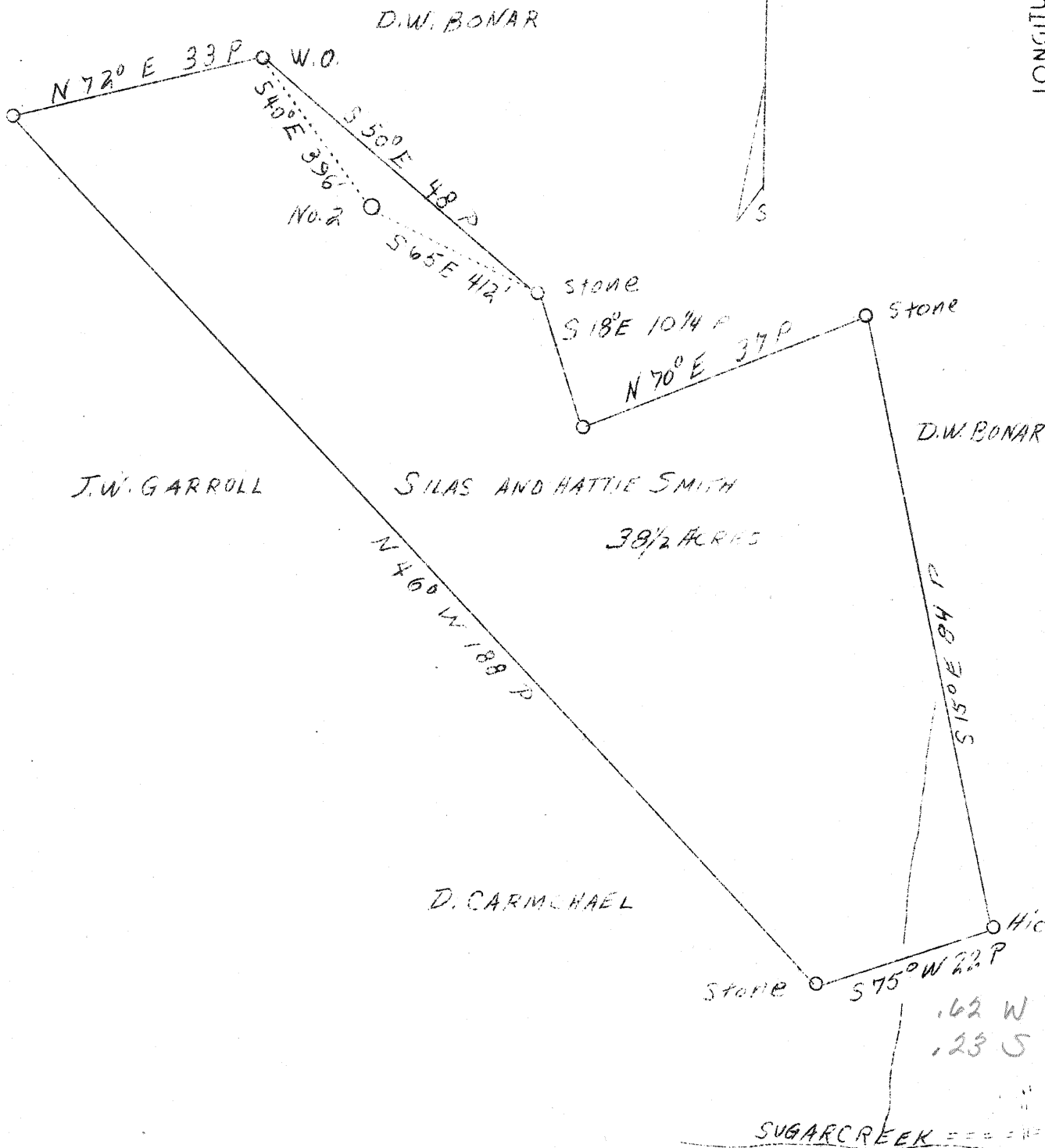
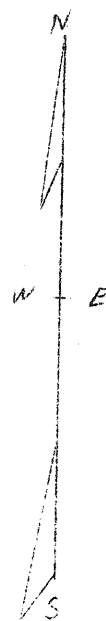


LATITUDE 39° 25' +

LONGITUDE 81° 00'



| | |
|-----------------|----------------------|
| Company | Casto Oil Company |
| Address | Charleston, W. Va. |
| Farm | Silas & Hattie Smith |
| Tract | 9 |
| Acres | 38-1/2 |
| Well (Farm) No. | Two |
| Elevation (SL) | 880 |
| Quadrangle | St. Marys E. |
| County | Tyler |
| District | Meade |
| Engineer | J. V. Dunbar |
| Eng. Reg. No. | 65 |
| File No. | C-23-L |
| Date | April 19, 1938 |
| Scale | 20 rods to 1 inch |

STATE OF WEST VIRGINIA
 Department of Mines
 OIL & GAS DIVISION
 Charleston

WELL LOCATION MAP

File No. TVI-199-A

x Denotes location of well on U. S. Topographic Maps, scale 1 to 62,500, latitude and longitude lines being represented by border lines as shown.

- Denotes one inch spaces on border line of original tracing.