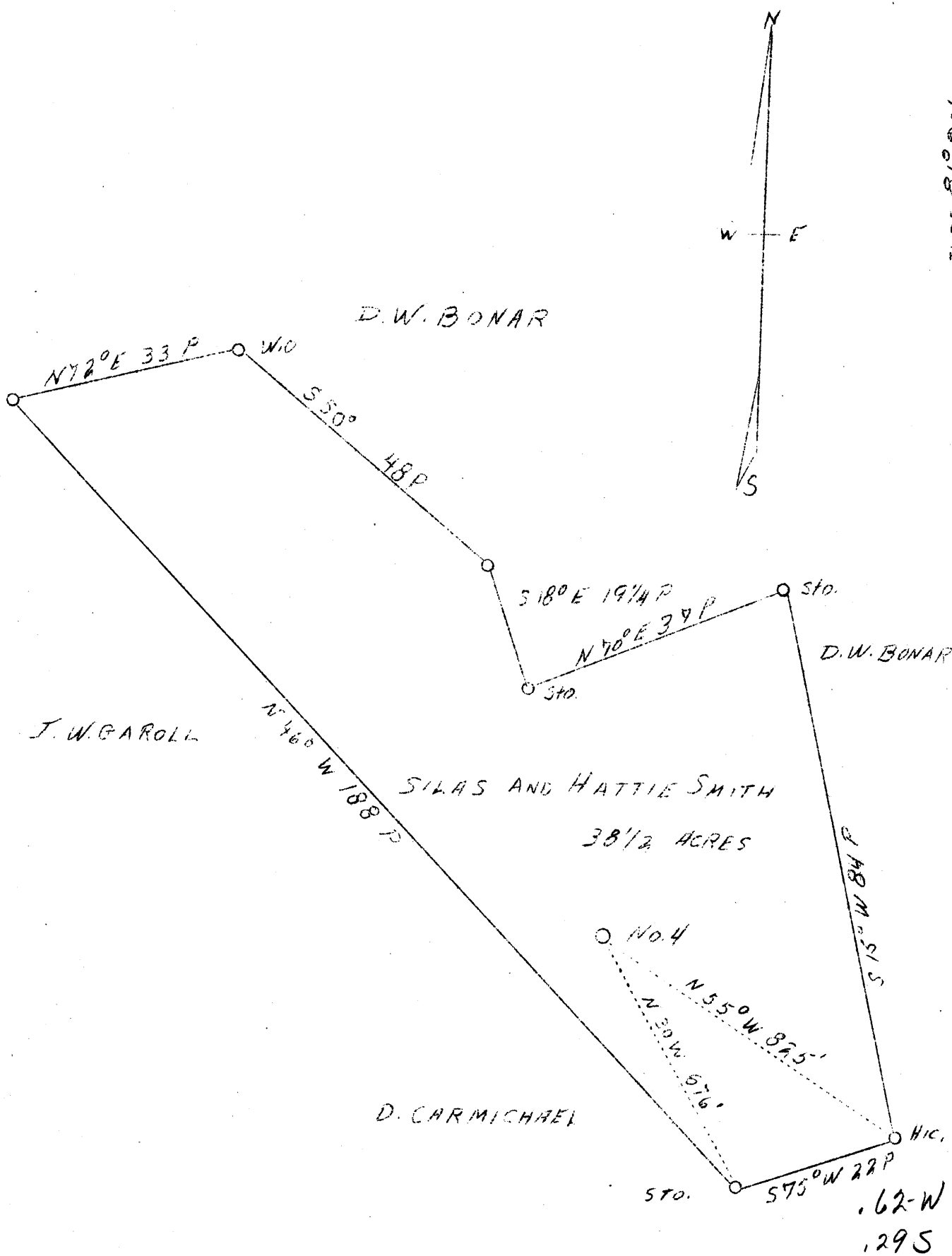


LATITUDE 39° 25'

LONGITUDE 81° 00'



ABD.

Company	Casto Oil Company
Address	Charleston, W. Va.
Farm	Silas & Hattie Smith
Tract	9
Acres	38-1/2
Well (Farm) No.	4
Elevation (SL)	860
Quadrangle	St. Marys E
County	Tyler
District	Meade
Engineer	J. V. Dunbar
Eng. Reg. No.	65
File No.	C-23-L
Date	April 19, 1938
Scale	20 rods to 1 inch

STATE OF WEST VIRGINIA
Department of Mines
OIL & GAS DIVISION
Charleston

WELL LOCATION MAP

File No. TVI-200-A

x Denotes location of well on U. S. Topographic Maps, scale 1 to 62,500, latitude and longitude lines being represented by border lines as shown.

- Denotes one inch spaces on border line of original tracing.