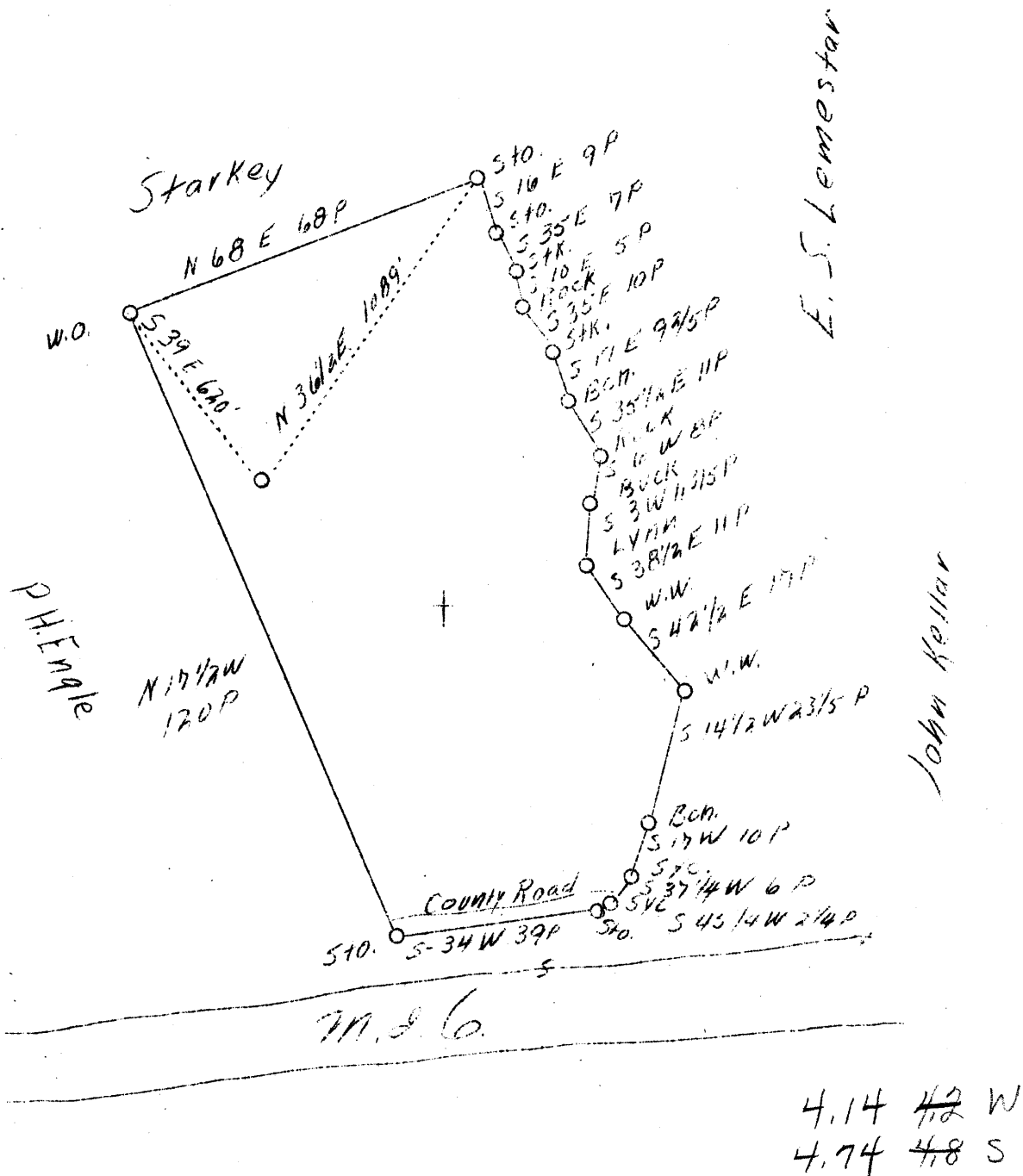


LATITUDE 39° 35'

LONGITUDE 80° 50'



ABD.

Company	Reno Oil Co.
Address	Sistersville, W. Va.
Farm	Engle
Tract	One
Acres	57
Well (Farm) No.	3
Elevation (SL)	739.3
Quadrangle	New Martinsville, W. Va.
County	Tyler
District	Ellsworth
Engineer	J. S. Haught
Eng. Reg. No.	Co. Surveyor
Date	Feb. 13, 1939
Scale	1" - 30 rods

STATE OF WEST VIRGINIA  
 Department of Mines  
 OIL & GAS DIVISION  
 Charleston

WELL LOCATION MAP

File No. TVI-201-A

x Denotes location of well on U. S. Topographic Maps, scale 1 to 62,500, latitude and longitude lines being represented by border lines as shown.

- Denotes one inch spaces on border line of original tracing.