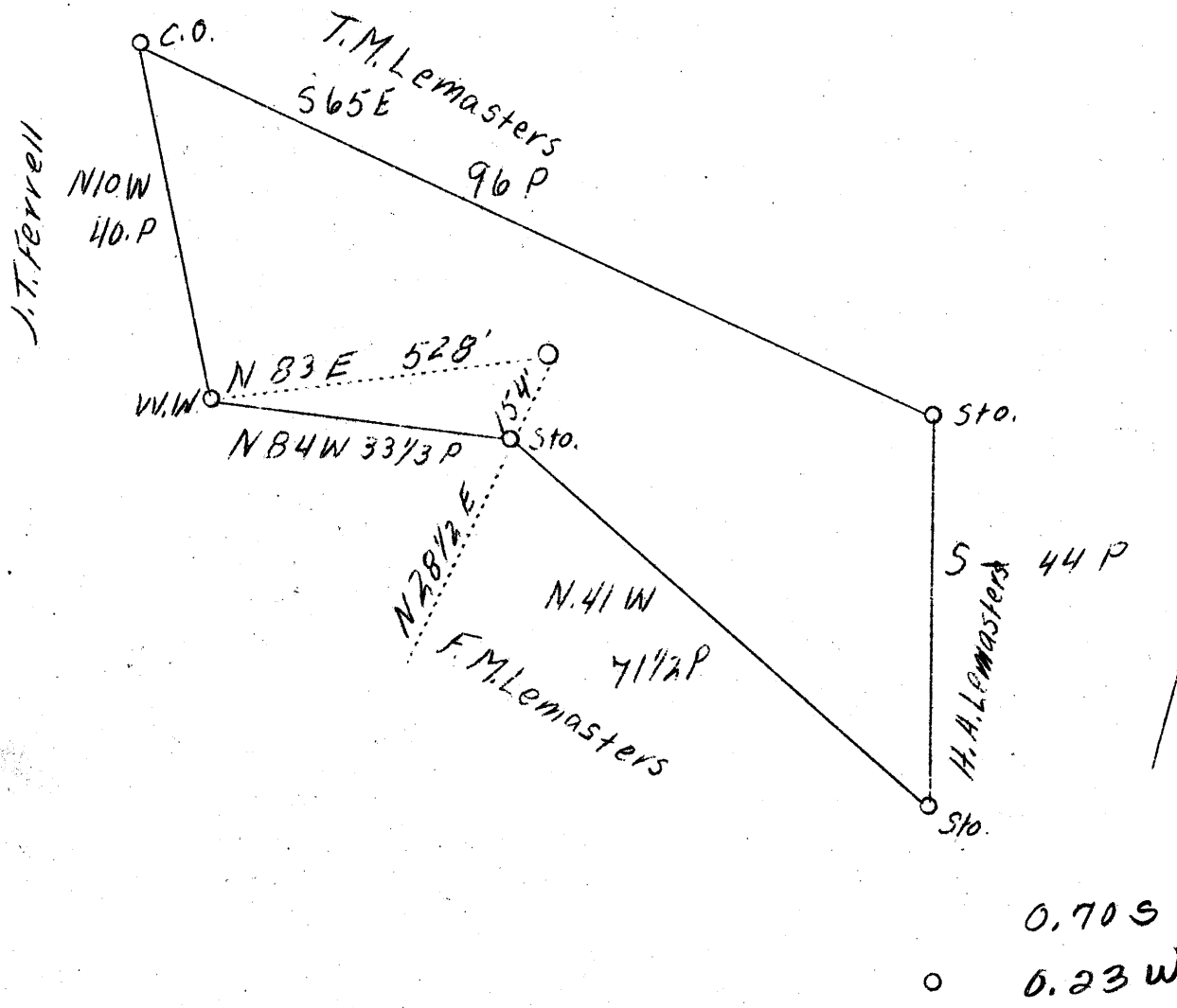


LATITUDE 39° 30''

LONGITUDE 80° 45''



| | |
|---------------------|------------------|
| Company | G.F. Eagon |
| Address | New Martinsville |
| Farm | T.M. Lemasters |
| Tract | 2 |
| Acres | 15 1/4 |
| Well (Farm) No. | 1 |
| Elevation SL | 960' |
| Quadrangle | West Union NE |
| County | Tyler |
| District | Ellsworth |
| Engineer | J.S. Haught |
| Engineer's Reg. No. | C.S.T.C. |
| Date | 8-17-38 |
| Scale | 1"-20 Acres |

STATE OF WEST VIRGINIA
 Department of Mines
 OIL AND GAS DIVISION
 CHARLESTON

WELL LOCATION MAP

File No. TVI-205-A

x Denotes location of well on U.S. Topographic Maps, scale 1 to 62,500 latitude and longitude lines being represented by border lines as shown.
 -Denotes one inch spaces on border line of original tracing.

McElroy District?, Tyler County, W. Va.
South Penn Oil Co.

~~111~~

TYL-205-A ?

| | Top. | Bottom. |
|--------------------------|------|---------|
| Pittsburgh Coal | 685 | |
| Big Injun Sand | 2010 | 2167 |
| Stray Sand | 2715 | 2731 |
| Gordon Sand (oil, 2735') | 2731 | 2740 |
| Total depth | | 2753 |