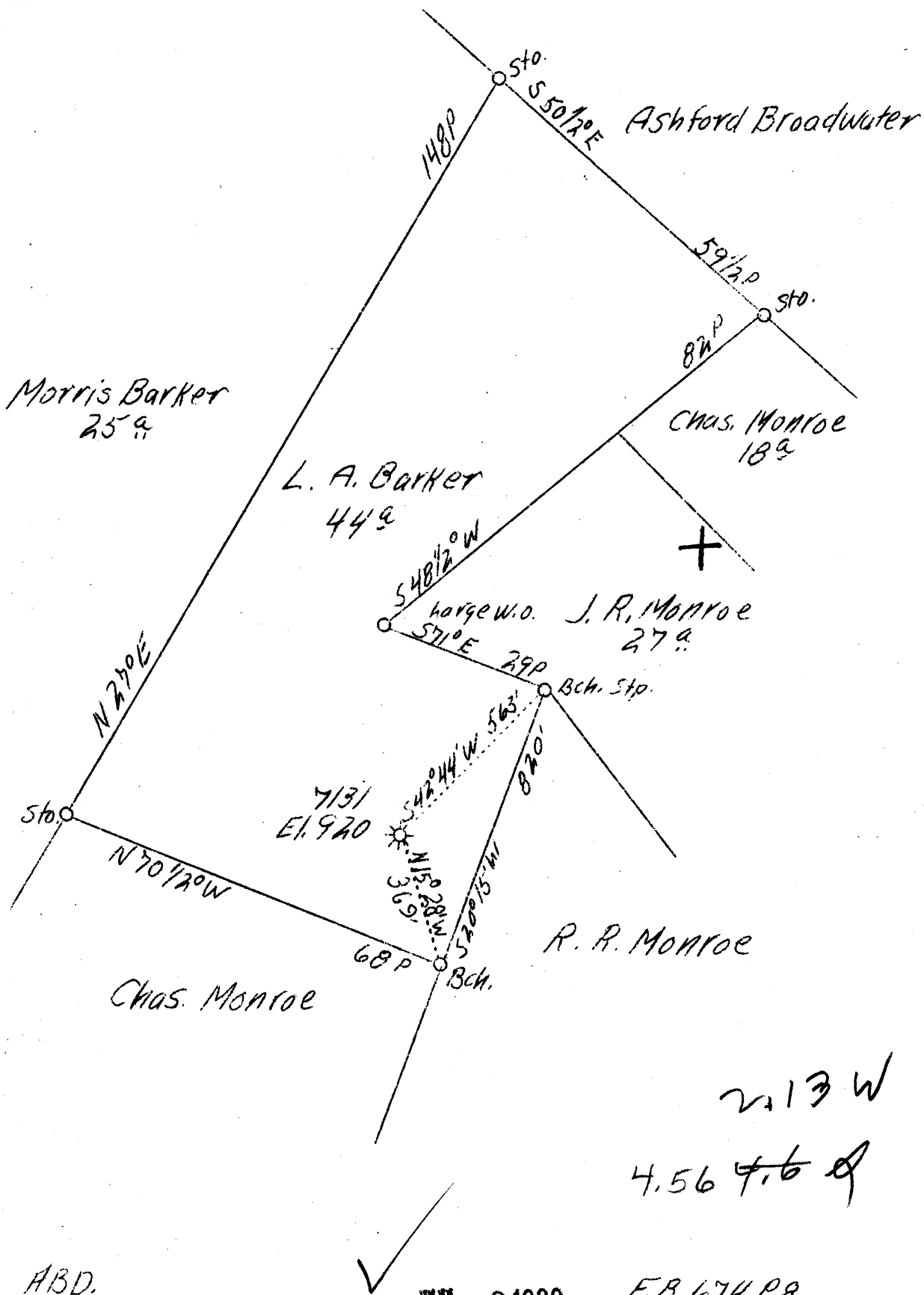


LATITUDE 39° 25'

LONGITUDE 80° 55'



ABD.

JUL - 3 1939

F.B 674 P8

Company Hope Nat'l Gas Co.
 Address Clarksburg, W.Va.
 Farm L.A.Barker
 Acres 44
 Lease No. 42635
 Well(Farm)No. 1
 Serial No. 7131
 El.(S.L.) 920
 Quadrangle West Union
 County Tyler
 District Meade
 Eng. 5 W.M.Bowers
 Eng. Reg. No. 900
 Date 6/23/39
 Scale 1" = 400'

(WLC)

STATE OF WEST VIRGINIA
 Department of Mines
 OIL AND GAS DIVISION
 Charleston

WELL LOCATION MAP

File No. Tyl - 208 - A

x Denotes location of well on U.S. Topographic Maps, scale 1 to 62,500, latitude and longitude lines being represented by border line of original tracing as shown.

- Denotes one inch spaces on border line of original tracing.

R. BARKER NO. 7131 WELL.

Gal. No. 56 (360)

Meade District, Tyler County, W. Va.
Hope Natural Gas Co.
Elevation, 965'.
Gas well.
On McKitt Creek.

now - 208A

Big Injun gas and Keener oil.

POOL CONSISTS OF 5 WELLS AT PRESENT (1931).

Heade District, Tyler County, W. Va.
Hope Natural Gas Co.
Elevation, 965'.
Gas well.
On McKim Creek.

now 208A

Big Injun gas and Keener oil.

POOL CONSISTS OF 5 WELLS AT PRESENT (1931).