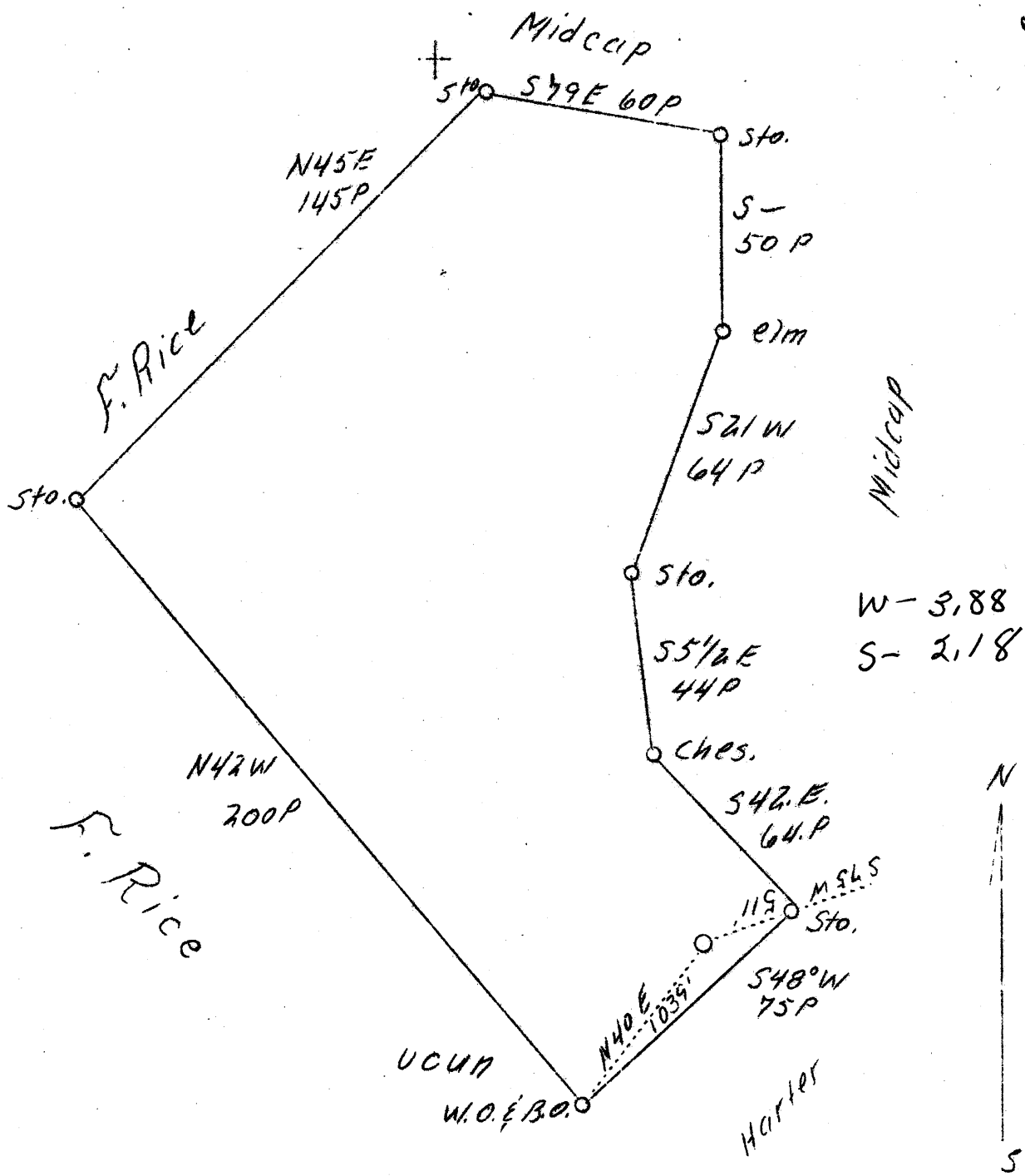


LATITUDE 39°35'

LONGITUDE 80°45'



ABD.

Sheet No 2

Company	McIntyre & Wright 3817
Address	Alvy, W. Va.
Farm	James Rine
Tract	1
Acres	150
Well (Farm) No.	3
Elevation (SL)	1109
Quadrangle	New Martinsville SE
County	Tyler
District	Ellsworth
Engineer	J. S. Haught
Eng. Reg. No.	Co. Surveyor
Date	Aug. 15, 1939
Scale	1" = 50 rods

STATE OF WEST VIRGINIA
 Department of Mines
 OIL & GAS DIVISION
 Charleston

WELL LOCATION MAP

File No. NY-210-A

x Denotes location of well on U. S. Topographic Maps, scale 1 to 62,500, latitude and longitude lines being represented by border lines as shown.

- Denotes one inch spaces on border line of original tracing.