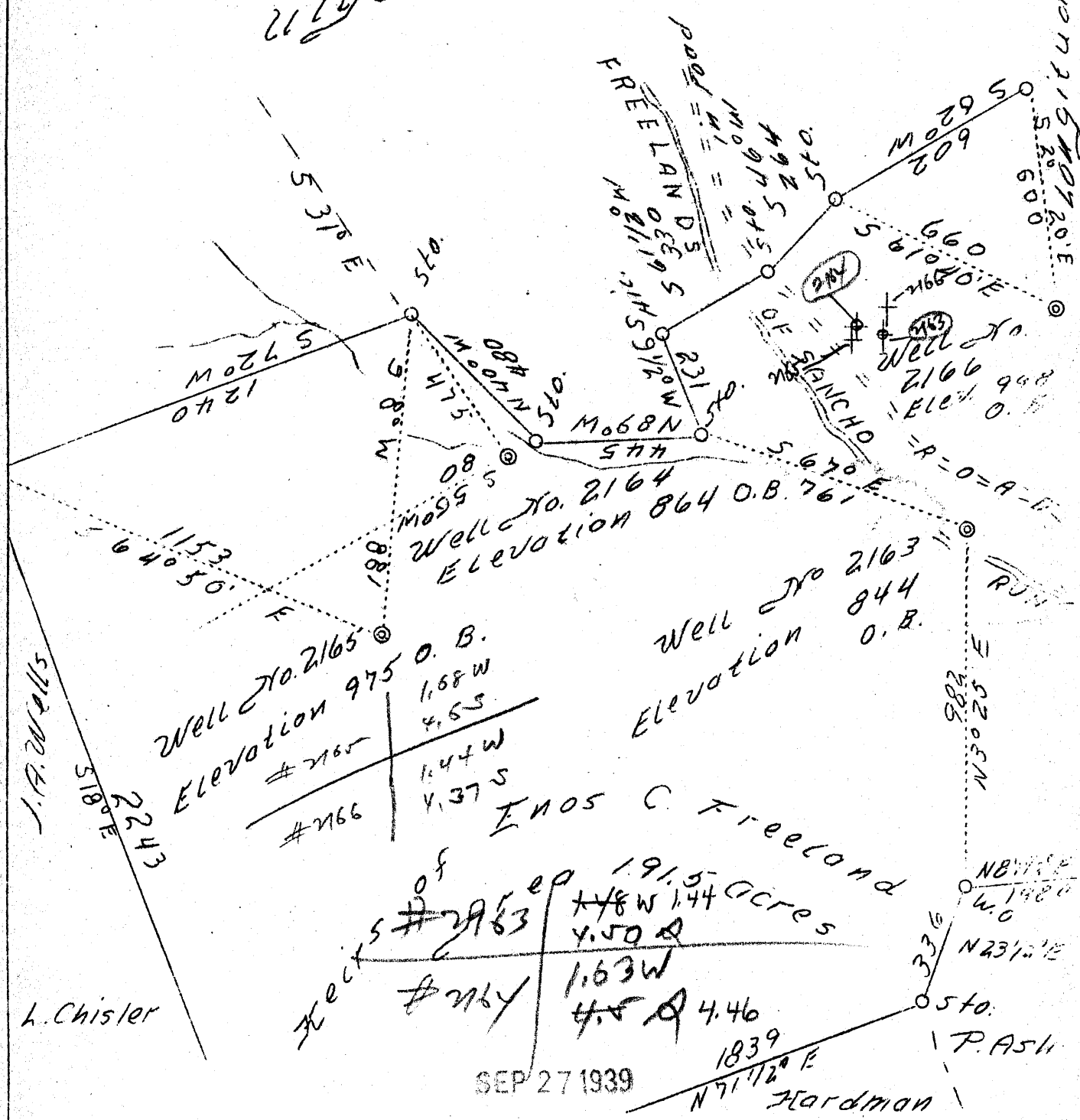


Latitude 39° 30'

Heirs of E. C. Freeland

2160 2161 2162 2163 2164 2165



L. Chisler

SEP 27 1939

Company	H. E. Milliken & A. M. Snider	STATE OF WEST VIRGINIA Department of Mines OIL & GAS DIVISION Charleston
Address	Waynesburg, Pa.	
Farm	Heirs of E. C. Freeland	WELL LOCATION MAP
Tract	1	
Acres	191.5	File No. <u>TVI-214-215-A</u> <u>Wells 2163/2164</u> <u>2165-218A</u>
Well (Farm) No.	Abdn. No. 2163, 2164, 2165 and 2166	
Elevation	-	
Quadrangle	West Union N. W.	
District	Meade	
County	Tyler	
Engineer	David Weed	
Eng. Reg. No.	233-16-5767	
Date	Aug. 28, 1939	
Scale	1" = 400'	

STATE OF WEST VIRGINIA  
DEPARTMENT OF MINES  
OIL AND GAS DIVISION

289

WELL RECORD

218  
218  
A

Oil or Gas Well Oil  
(Kind)

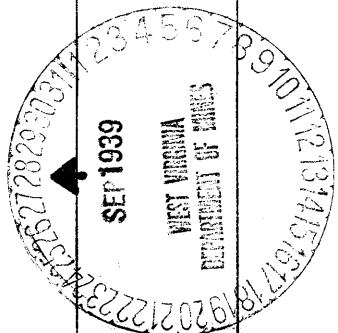
Permit No. \_\_\_\_\_

Company Milliken & Snider  
 Address Clarksburg, W. Va.  
 Farm E. C. Freeland Acres 191 1/2  
 Location (waters) Sancho Run  
 Well No. 2165 Elev. 975  
 District Meade County Tyler  
 The surface of tract is owned in fee by Enos C. Freeland Hrs. 10  
 Address \_\_\_\_\_  
 Mineral rights are owned by \_\_\_\_\_  
 Address \_\_\_\_\_  
 Drilling commenced 8-1-1896  
 Drilling completed 9-8-1896  
 Date shot Last shot 6-12-1913 Depth of shot 1916  
 Open Flow /10ths Water in \_\_\_\_\_ Inch  
 /10ths Merc. in \_\_\_\_\_ Inch  
 Volume \_\_\_\_\_ Cu. Ft.  
 Rock Pressure \_\_\_\_\_ lbs. \_\_\_\_\_ hrs.  
 Oil \_\_\_\_\_ bbls., 1st 24 hrs.  
 Fresh water None recorded feet \_\_\_\_\_ feet  
 Salt water None recorded feet \_\_\_\_\_ feet

Casing and Tubing	Used in Drilling	Left in Well	Packers
Size			Kind of Packer
16			
13			
8 1/4	1050	1050	Size of
6 5/8 6 1/2"	1800	1800	Depth set
5 3/16 4 1/2"	1823	1823	
3			Perf. top
2	1937	1937	Perf. bottom
Liners Used			Perf. top
			Perf. bottom

CASING CEMENTED \_\_\_\_\_ SIZE \_\_\_\_\_ No. FT. \_\_\_\_\_ Date \_\_\_\_\_  
**Not cemented**  
 COAL WAS ENCOUNTERED AT \_\_\_\_\_ FEET \_\_\_\_\_ INCHES  
 \_\_\_\_\_ FEET No coal INCHES \_\_\_\_\_ FEET \_\_\_\_\_ INCHES  
 \_\_\_\_\_ FEET \_\_\_\_\_ INCHES \_\_\_\_\_ FEET \_\_\_\_\_ INCHES

Formation	Color	Hard or Soft	Top	Bottom	Oil Gas or Water	Depth Found	Remarks
Cow Run Sand			1000	1020			
First Salt Sand			1200	1400			
Big Lime			1741	1841			
Big Injun Sand			1841	1947	Oil	1916	
Total Depth			1947				



Formation	Color	Hard or Soft	Top	Bottom	Oil, Gas or Water	Depth Found	Remarks

Date September 20, 1939

APPROVED Milliken & Snider, Owner

By A M Snider  
(Title)