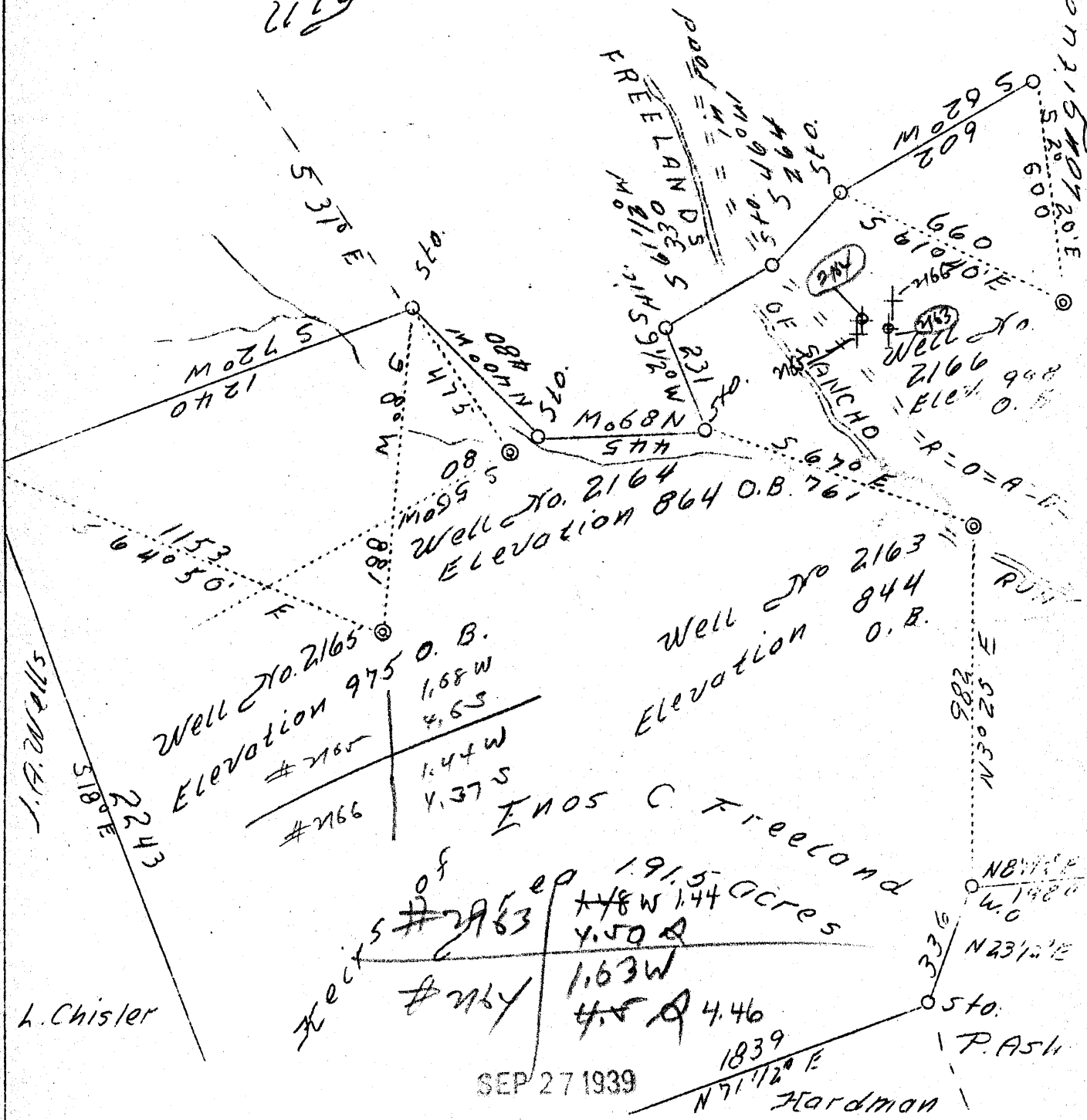


Latitude 39° 30'

# Tracts of E. C. Freeland



Company H. E. Milliken & A. M. Snider  
 Address Waynesburg, Pa.  
 Farm Heirs of E. C. Freeland  
 Tract 1  
 Acres 191.5  
 Well (Farm) No. Abdn. No. 2163, 2164, 2165 and 2166  
 Elevation -  
 Quadrangle West Union N. W.  
 District Meade  
 County Tyler  
 Engineer David Weed  
 Eng. Reg. No. 233-16-5767  
 Date Aug. 28, 1939  
 Scale 1" = 400'

STATE OF WEST VIRGINIA  
 Department of Mines  
 OIL & GAS DIVISION  
 Charleston

## WELL LOCATION MAP

File No. TVI-214-215-A  
 Well 2163-2164  
 2165-218A-

STATE OF WEST VIRGINIA  
DEPARTMENT OF MINES  
OIL AND GAS DIVISION

296

WELL RECORD

219  
AD 219  
240 A

Permit No. \_\_\_\_\_ Oil or Gas Well Oil  
(Kind)

Company Milliken & Snider  
Address Waynesburg, Pa.  
Farm E. C. Freeland Acres 191 1/2  
Location (waters) Sancho Run  
Well No. 2166 Elev. 998  
District Meade County Tyler  
The surface of tract is owned in fee by E. C. Freeland Hrs.  
Address \_\_\_\_\_  
Mineral rights are owned by \_\_\_\_\_  
Address \_\_\_\_\_  
Drilling commenced 8-7-1897  
Drilling completed 9-4-1897  
Date shot 9-3-1908 Depth of shot 1916  
Open Flow /10ths Water in \_\_\_\_\_ Inch  
/10ths Merc. in \_\_\_\_\_ Inch  
Volume \_\_\_\_\_ Cu. Ft.  
Rock Pressure \_\_\_\_\_ lbs. \_\_\_\_\_ hrs.  
Oil \_\_\_\_\_ bbls., 1st 24 hrs.  
Fresh water None recorded feet \_\_\_\_\_ feet  
Salt water None recorded feet \_\_\_\_\_ feet

| Casing and Tubing | Used in Drilling | Left in Well | Packers        |
|-------------------|------------------|--------------|----------------|
| Size              |                  |              |                |
| 16                |                  |              | Kind of Packer |
| 13                |                  |              |                |
| 10                | 192              | 192          | Size of        |
| 8 1/4             | 1053             | 1053         |                |
| 6 5/8 6 1/2"      | 1775             | 1775         | Depth set      |
| 5 3/16            |                  |              |                |
| 3                 |                  |              | Perf. top      |
| 2                 | 1946             | 1946         | Perf. bottom   |
| Liners Used       |                  |              | Perf. top      |
|                   |                  |              | Perf. bottom   |

CASING CEMENTED \_\_\_\_\_ SIZE \_\_\_\_\_ No. FT. \_\_\_\_\_ Date \_\_\_\_\_  
**Not cemented**  
COAL WAS ENCOUNTERED AT \_\_\_\_\_ FEET \_\_\_\_\_ INCHES  
\_\_\_\_\_ FEET **No coal** INCHES \_\_\_\_\_ FEET \_\_\_\_\_ INCHES  
\_\_\_\_\_ FEET \_\_\_\_\_ INCHES \_\_\_\_\_ FEET \_\_\_\_\_ INCHES

| Formation      | Color | Hard or Soft | Top  | Bottom | Oil Gas or Water | Depth Found | Remarks |
|----------------|-------|--------------|------|--------|------------------|-------------|---------|
| Salt Sand      |       | (Calculated) | 1234 | 1434   |                  |             |         |
| Big Lime       |       |              | 1775 | 1840   |                  |             |         |
| Big Injun Sand |       |              | 1865 |        | Oil              | 1916        |         |
| Total Depth    |       |              | 1957 |        |                  |             |         |

