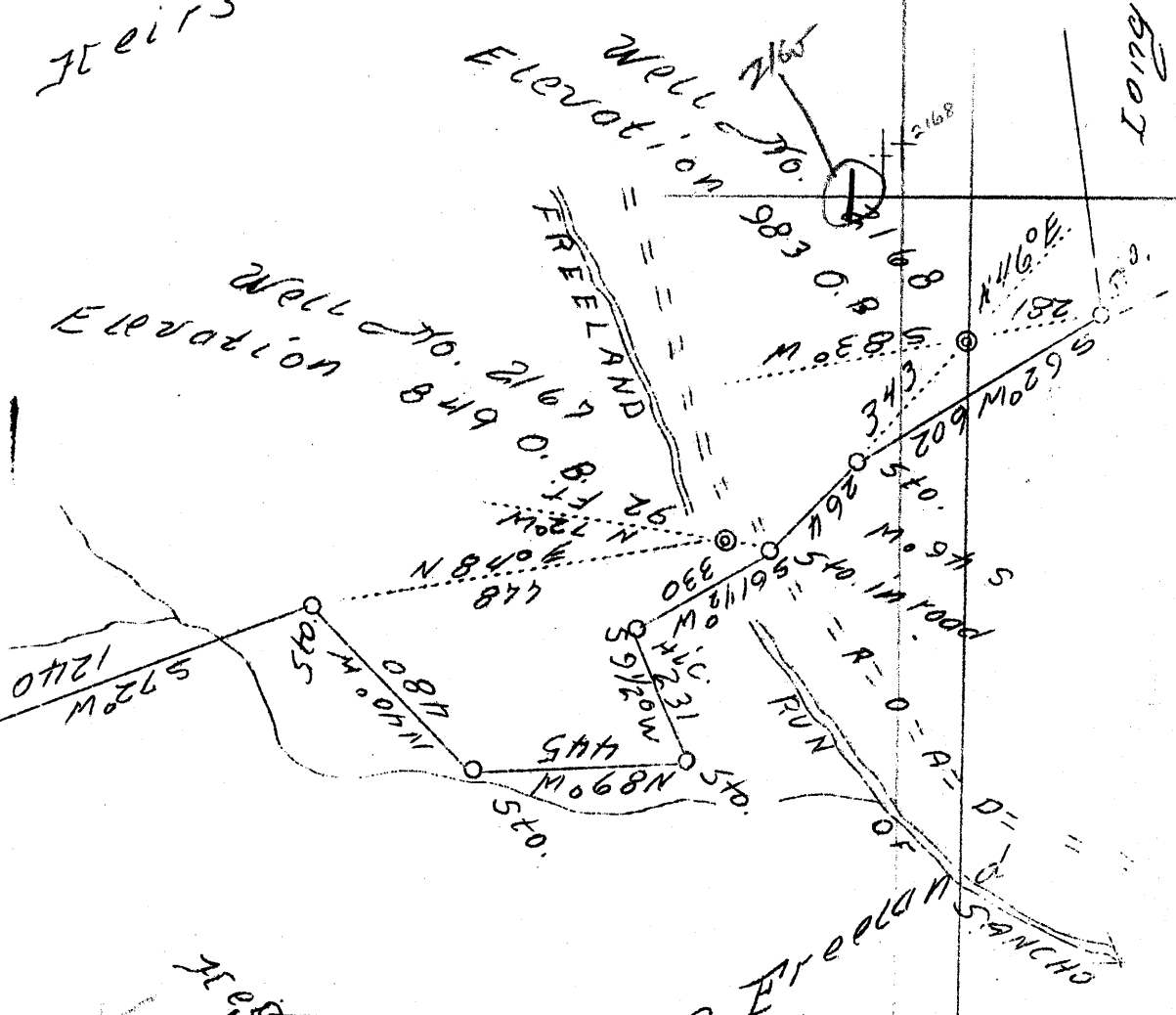


Latitude 39° 30'

Longitude 80° 55'

Heirs of Ulysses T. Freeland



Heirs of
 2165
 2167
 2168

Heirs of EMOS

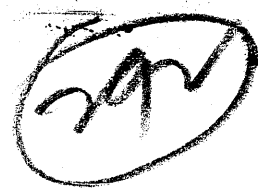
# 2168	1.47
# 2167	5.42
# 2165	4.27
	1.77 W
	4.50

ABD.

SEP 27 1939

Company	H. E. Milliken & A. M. Snider	STATE OF WEST VIRGINIA
Address	Waynesburg, Pa.	Department of Mines
Farm	Heirs of U. T. Freeland	OIL & GAS DIVISION
Tract	1	Charleston
Acres	192.25	
Well No.	ABD. 2167 and 2168	WELL LOCATION MAP
Quadrangle	West Union N. W.	
Elevation	-	
County	Tyler	File No. <u>TYL-216-A</u>
District	Moade	Well # <u>2165</u>
Engineer	David Weed	<u>2167</u>
Eng. Reg. No.	233-16-5767	<u>2168</u>
Date	Aug. 29, 1939	
Scale	1" = 400'	

STATE OF WEST VIRGINIA
DEPARTMENT OF MINES
OIL AND GAS DIVISION



WELL RECORD

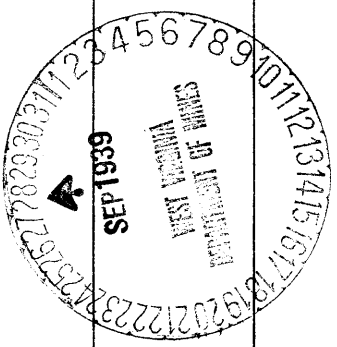
Permit No. Oil or Gas Well Oil
(Kind)

Company Milliken & Snider
Address Waynesburg, Pa.
Farm U. T. Freeland Acres 192 1/2
Location (waters) Freelands Run of Sancho
Well No. 2168 Elev. 983
District Meade County Tyler
The surface of tract is owned in fee by
Address
Mineral rights are owned by
Address
Drilling commenced 9-8-1896
Drilling completed 10-22-1896
Date shot 6-13-1901 Depth of shot 1937
Open Flow /10ths Water in Inch
/10ths Merc. in Inch
Volume Cu. Ft.
Rock Pressure lbs. hrs.
Oil bbls., 1st 24 hrs.
Fresh water None recorded feet feet
Salt water None recorded feet feet

Casing and Tubing	Used in Drilling	Left in Well	Packers
Size			
16			Kind of Packer
13			
10	185	Pulled	Size of
8 1/4	1000	Pulled	
6 5/8 6 1/4"	1530	1530	Depth set
5 3/16			
4 1/2" Liner	703	703	Perf. top
2	1961	1961	Perf. bottom
Liners Used			Perf. top
			Perf. bottom

CASING CEMENTED SIZE No. FT. Date
Not cemented
COAL WAS ENCOUNTERED AT FEET INCHES
 FEET None INCHES FEET INCHES
 FEET INCHES FEET INCHES

Formation	Color	Hard or Soft	Top	Bottom	Oil Gas or Water	Depth Found	Remarks
First Cow Run Sand			1020	1040			
First Salt Sand			1300	1450			
Big Lime			1775	1835			
Keener Sand			1835	1875			
Big Injun Sand			1875	1971	Oil & Gas	1937	
Total Depth				1971			



Formation	Color	Hard or Soft	Top	Bottom	Oil, Gas or Water	Depth Found	Remarks

Date September 20, 1959

APPROVED Milliken & Snider, Owner

By A M Snider
(Title)