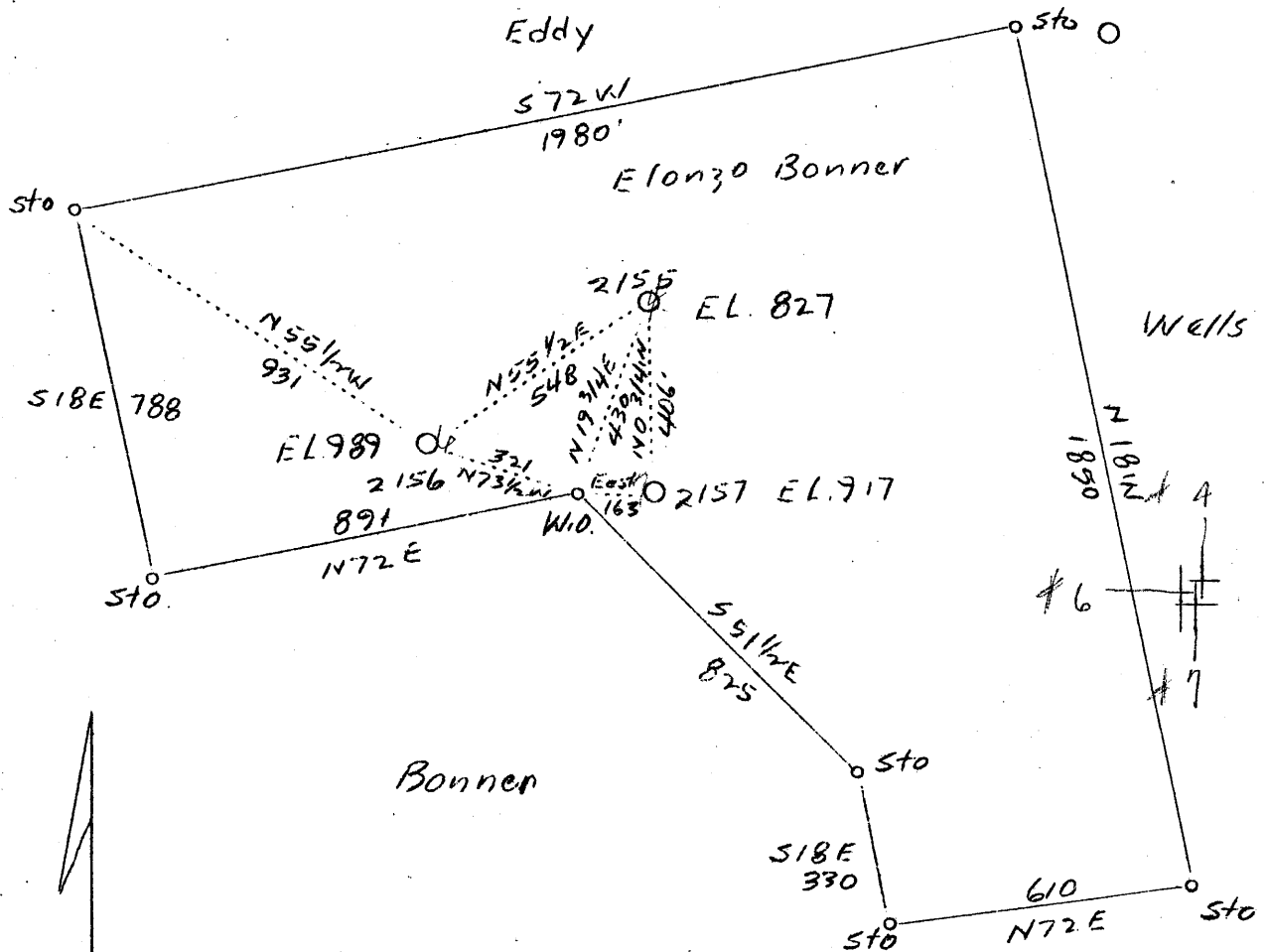


1 2 3

LATITUDE 39° 30'

LONGITUDE 81° 00'



4 { W - .7
S - 5.54

Haught

6 { W. 22 0.82
S - 5.16 # 7 { W. .75
S - 5.169

Company F. S. Deem
 Address Harrisville, W. Va.
 Farm Elonzo Bonner
 Acres 55
 Well (Farm) No. 4, 6 and 7
 Serial No. 2155-56-57
 Elevation (SL) 827, 989 and 917
 Quadrangle St. Marys NE
 County Tyler
 District Meade
 Engineer B. F. Rinehart
 Eng. Reg. No. 648
 Drawing No. 205-M-T
 Date Sept. 25, 1939
 Scale 1" = 400'

STATE OF WEST VIRGINIA
 Department of Mines
 OIL & GAS DIVISION
 Charleston

WELL LOCATION MAP
 File No. TYL-222A 223A 224A

x Denotes location of well on U. S. Topographic Maps, scale 1 to 62,500, latitude and longitude lines being represented by border lines as shown.

- Denotes one inch spaces on border line of original tracing.