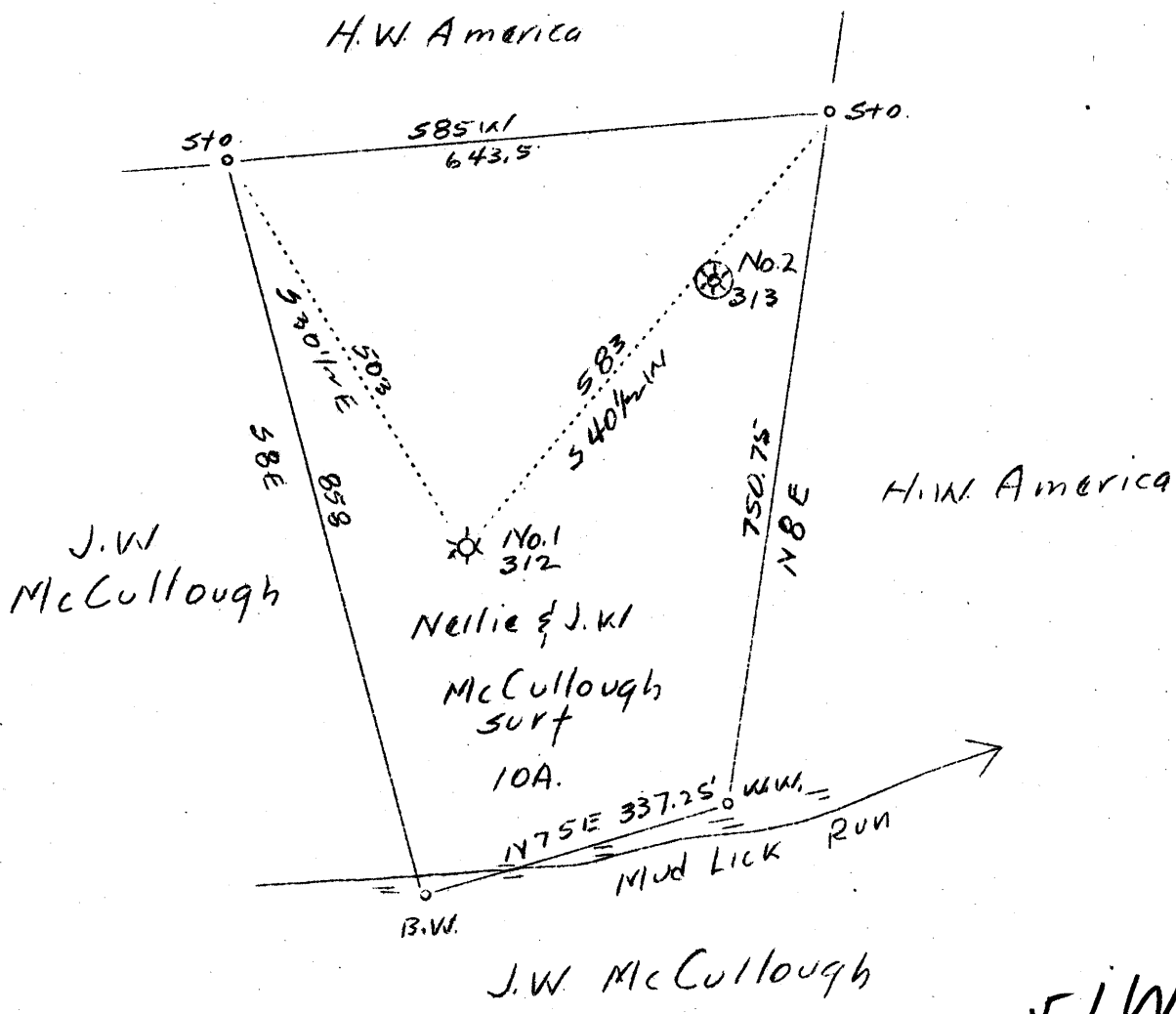


1 2 3 LATITUDE 39° 20' 50'



2.51 W  
1.37 Q

Abd.

OCT 22 1939

Company	Carnegie Natural Gas Co.
Address	Pittsburgh, Pa.
Farm	James Merritt
Tract	1
Acres	10
Lease No.	E-5668-65
Well (Farm) No.	1
Serial No.	312
Elevation (SL)	1090
Quadrangle	West Union S. W. 1/4
County	Tyler
District	Centerville
Engineer	D. T. Britton
Eng. Reg. No.	-
Date	Sept. 29, 1939
Scale	1" = 200'

STATE OF WEST VIRGINIA  
Department of Mines  
OIL & GAS DIVISION  
Charleston

WELL LOCATION MAP  
File No. TYL-225A

x Denotes location of well on U. S. Topographic Maps, scale 1 to 62,500, latitude and longitude lines being represented by border lines as shown.

- Denotes one inch spaces on border line of original tracing.

50

WEST VIRGINIA DEPARTMENT OF MINES  
OIL AND GAS DIVISION

293

WELL RECORD

Ab 225-A

Permit No. \_\_\_\_\_

WELL TO BE ABANDONED.

Oil or Gas Well GAS  
(Kind)

Company CARNEGIE NATURAL GAS COMPANY  
 Address 1011 Frick Bldg., PITTSBURGH, PENNA.  
 Farm JAMES MERRITT Acres 10  
 Location (waters) MUD LICK RUN  
 Well No. 1-312 Elev. 1090  
 District CENTREVILLE County TYLER  
 The surface of tract is owned in fee by NELLIE and J. W. McCULLOUGH  
 Address CENTRAL STATION, W. VA.  
 Mineral rights are owned by LAWRENCE S. and LONA L. DOAK  
 Rt. 3 Address PENNSBORO, W. VA.  
 Drilling commenced 1-30-12  
 Drilling completed 2-24-12  
 Date shot \_\_\_\_\_ Depth of shot \_\_\_\_\_  
 Open Flow \_\_\_\_\_ /10ths Water in \_\_\_\_\_ Inch  
 \_\_\_\_\_ /10ths Merc. in \_\_\_\_\_ Inch  
 Volume 8,800,000 Cu. Ft.  
 Rock Pressure 640 lbs. hrs.  
 Oil \_\_\_\_\_ bbls., 1st 24 hrs.  
 Fresh water 1468 feet  
 Salt water \_\_\_\_\_ feet

Casing and Tubing	Used in Drilling	Left in Well	Packers
Size			
16			Kind of Packer
13			
10		520	Size of
8 1/4			
6 5/8		1905	Depth set
5 3/16			
3		2000	Perf. top
2			Perf. bottom
Liners Used			Perf. top
			Perf. bottom

CASING CEMENTED \_\_\_\_\_ SIZE \_\_\_\_\_ No. FT. \_\_\_\_\_ Date \_\_\_\_\_  
 COAL WAS ENCOUNTERED AT \_\_\_\_\_ FEET \_\_\_\_\_ INCHES  
 \_\_\_\_\_ FEET \_\_\_\_\_ INCHES FEET \_\_\_\_\_ INCHES  
 \_\_\_\_\_ FEET \_\_\_\_\_ INCHES FEET \_\_\_\_\_ INCHES

Formation	Color	Hard or Soft	Top	Bottom	Oil Gas or Water	Depth Found	Remarks
Sand			520	560			
Gas Sand			1420	1555	Water	1468	
1st Salt Sand			1700	1760			
Marion Sand			1775	1820			
Little Lime			1865	1885	Gas	1835 - 1845	
Pencil Cave			1885	1890			
Big Lime			1890	1979			
Big Injun			1979		Gas	1987	
TOTAL DEPTH				2030'			

