

New Location
 Drill Deeper
 Abandonment

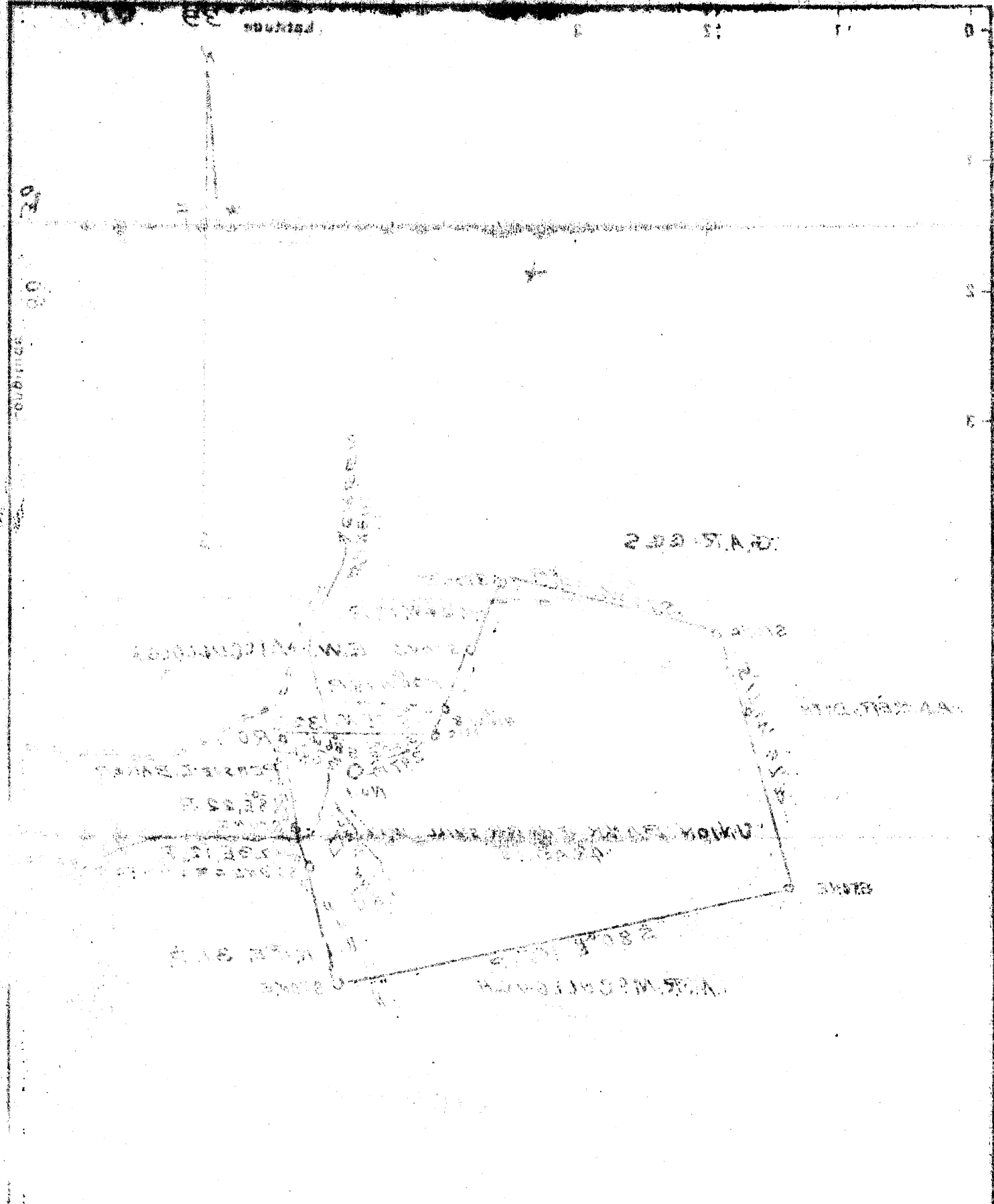
SURVEYED AND PLATTED BY ROBERT CHALFAINT PIKE WVA

Company HARRISON-TRITCHIE OIL & GAS CO.
 Address PENNSBORO W.VA
 Farm UNION BANK HARRISVILLE W.VA
 Tract _____ Acres 48 Lease No. _____
 Well (Farm) No. 1 Serial No. _____
 Elevation (Spirit Level) 875
 Quadrangle WEST UNION C PK
 County TYLER District CENTERVILLE
 Engineer J. V. Dunbar
 Engineer's Registration No. 65
 File No. C. 23- Drawing No. _____
 Date Mar 22 1940 Scale 32 P.T. 1. INCH

STATE OF WEST VIRGINIA
 DEPARTMENT OF MINES
 OIL AND GAS DIVISION
 CHARLESTON

WELL LOCATION MAP
 FILE NO. TYL-240A

+ Denotes location of well on United States Topographic Maps, scale 1 to 62,500, latitude and longitude lines being represented by border lines as shown.
 - Denotes one inch spaces on border line of original tracing.



Abandonment SURVEYED AND LOCATED BY TOWN OF CHARLESTON

STATE OF WEST VIRGINIA
 DEPARTMENT OF MINES
 OIL AND GAS DIVISION
 CHARLESTON

WELL LOCATION MAP
 FILE NO. **TYL-240A**

+ Denotes location of well in United States
 Topographic Map, scale 1:62,500. Lat-
 itude and longitude lines being represented
 by dotted lines as shown.

- Denotes one inch spaces on border line
 of original tracing.

Date **Mar 22 1942** Scale **32 FT. 1 INCH**

File No. **240A** Drawing No. **1**

Engineer's Registration No. **107**

Engineer **D. J. Thompson**

County **TYLER** District **CENTERSVILLE**

Quadrangle **WEST VIRGINIA**

Elevation (Spot Level) **878**

Well (Farm) No. **13** Serial No. **13**

Tract Acres **4.8** Lease No. **13**

Farm **UNION BANK HARRISVILLE, W. VA.**

Address **PENNSBORO W. VA.**

Company **HARRISON-PITMAN OIL & GAS CO.**