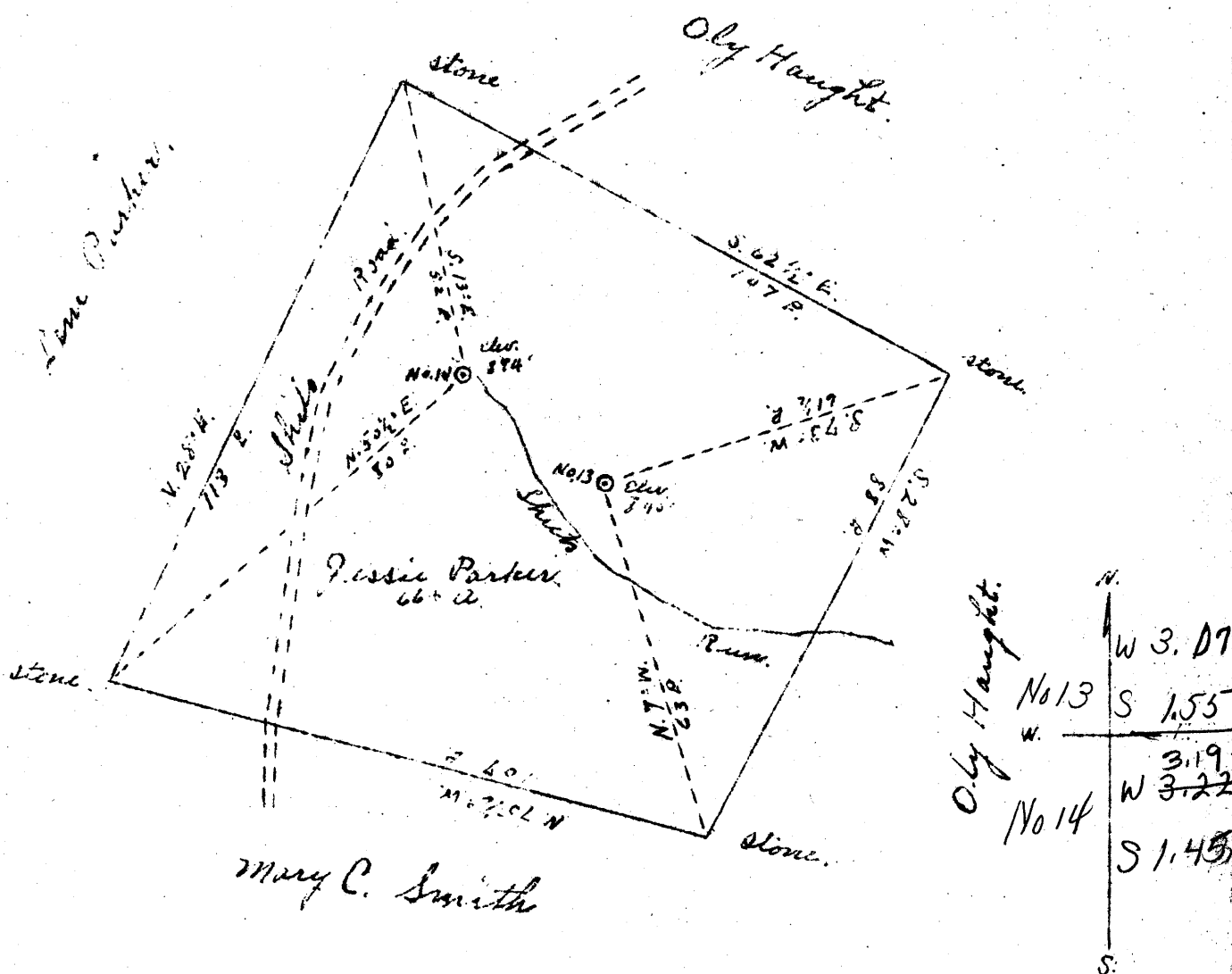


Latitude 39 ° 30 '

Longitude 81 ° 00 '



New Location
 Drill Deeper
 Abandonment

Company Reno Oil Company
 Address Sistersville W. Va.
 Farm Jessie Parker
 Tract _____ Acres 6.4 Lease No. _____
 Well (Farm) No. 13 & 14 Serial No. _____
 Elevation (Spirit Level) No. 13 540 No. 14 574
 Quadrangle St. Marys NE
 County Tyler District Union
 Engineer Jno. Triplett
 Engineer's Registration No. _____
 File No. _____ Drawing No. _____
 Date Sept 27 1910 Scale 30 E = 1"

STATE OF WEST VIRGINIA
 DEPARTMENT OF MINES
 OIL AND GAS DIVISION
 CHARLESTON

WELL LOCATION MAP
 FILE NO. TYL-274A/275A
 WELLS 13 & 14

+ Denotes location of well on United States Topographic Maps, scale 1 to 62,500. latitude and longitude lines being represented by border lines as shown.

- Denotes one inch spaces on border line of original tracing.