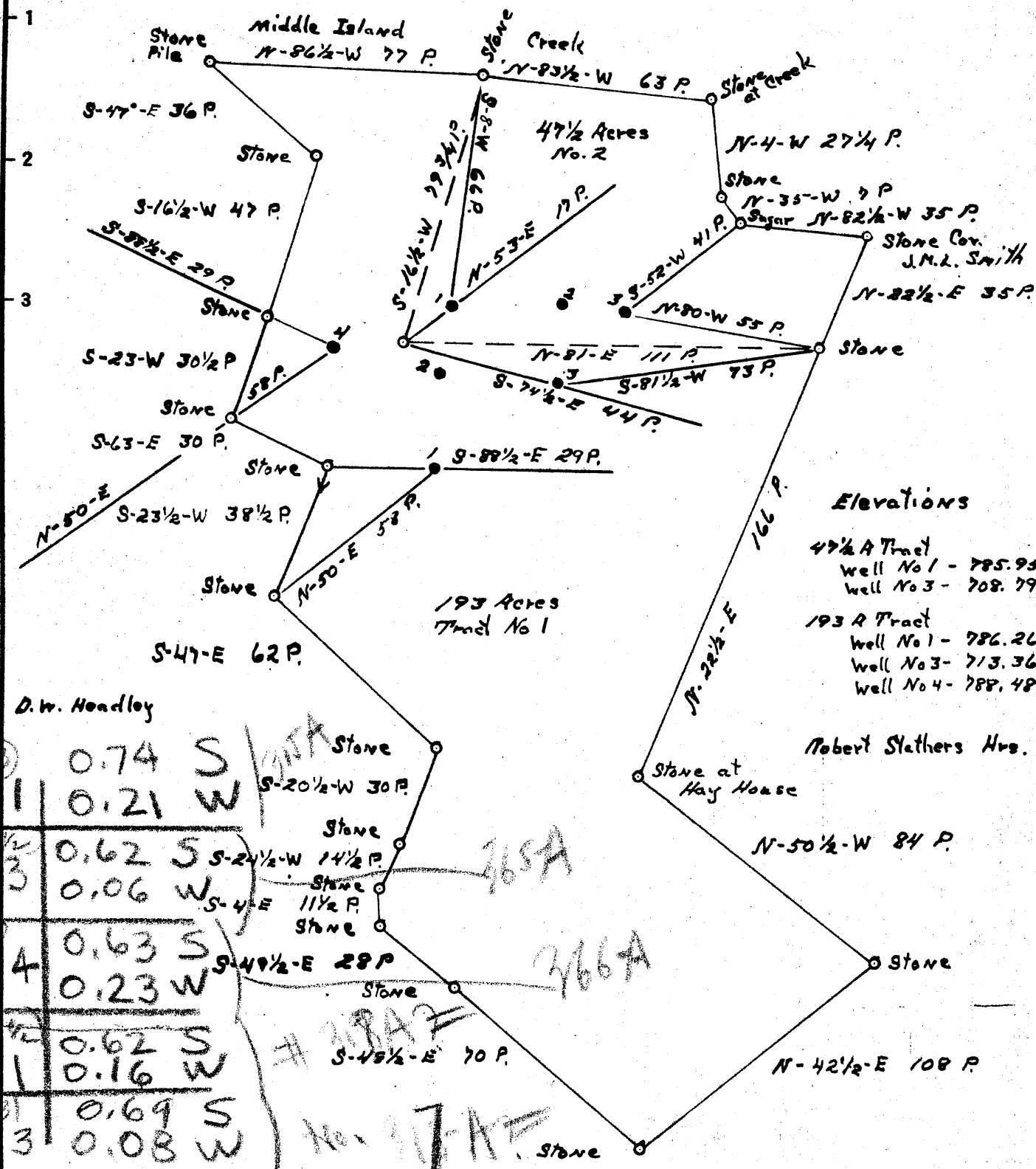


Latitude 37° 25'

Elev 787

Longitude 80° 50'



Elevations

- 47 1/2 A Tract
 - Well No 1 - 785.95
 - Well No 3 - 708.79
- 193 A Tract
 - Well No 1 - 786.26
 - Well No 3 - 713.36
 - Well No 4 - 788.48

Robert Stathers Hrs.

D.W. Headley

0.74 S	Stone
0.21 W	S-20 1/2-W 30 P
0.62 S	S-24 1/2-W 14 1/2 P
0.06 W	S-4 E 11 1/2 P
0.63 S	S-49 1/2-E 28 P
0.23 W	Stone
0.62 S	S-45 1/2-E 70 P
0.16 W	Stone
0.69 S	Stone
0.08 W	Stone

New Location...
 Drill Deeper.....
 Abandonment.....

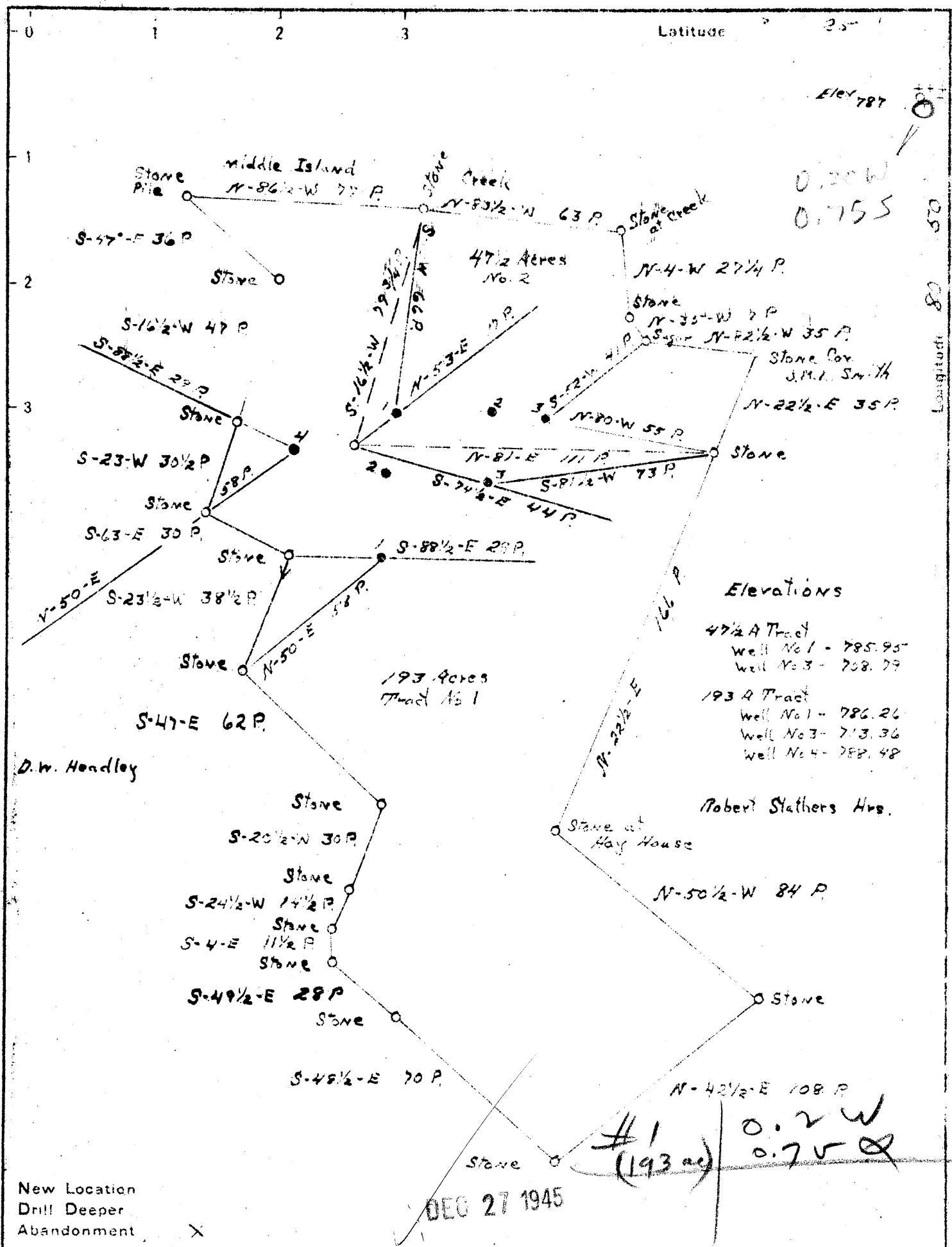
Company American Oil Development Company
 Address Sistersville, West Virginia
 Farm J.M. Smith
 Tract 142 Acres 42 1/2 Lease No. 142
 Well (Farm) No. 42A-13 Serial No. _____
 Elevation (Spirit Level) _____
 Quadrangle West Union
 County Tyler District Centerville
 Engineer J.S. Naught
 Engineer's Registration No. _____
 File No. _____ Drawing No. _____
 Date 8-12-42 Scale 40 yds = 1 inch

STATE OF WEST VIRGINIA
 DEPARTMENT OF MINES
 OIL AND GAS DIVISION
 CHARLESTON

WELL LOCATION MAP
 FILE NO. TYL-315-A-No.1-193-Ac.
TYL-365-A-#3-47 1/2 AC.
TYL-366-A-#4-195-Ac.

+ Denotes location of well on United States Topographic Maps, scale 1 to 62,500, latitude and longitude lines being represented by border lines as shown.

- Denotes one inch spaces on border line of original tracing.



New Location
 Drill Deeper
 Abandonment X

Company American Oil Development Company
 Address Sistersville, West Virginia
 Farm J. M. Smith
 Tract 142 Acres 193 1/2 Lease No. 142
 Well (Farm) No. 422A-13 Serial No. _____
 Elevation (Spirit Level) _____
 Quadrangle West Union
 County Tyler District Centerville
 Engineer J. S. Naught
 Engineer's Registration No. _____
 File No. _____ Drawing No. _____
 Date 8-12-42 Scale 40 ft. = 1 inch

STATE OF WEST VIRGINIA
 DEPARTMENT OF MINES
 OIL AND GAS DIVISION
 CHARLESTON

WELL LOCATION MAP
 FILE NO. TYL-315-A-No. 1-195 Ac.

+ Denotes location of well on United States Topographic Maps, scale 1 to 62,500, latitude and longitude lines being represented by border lines as shown.
 - Denotes one inch spaces on border line of original tracing.