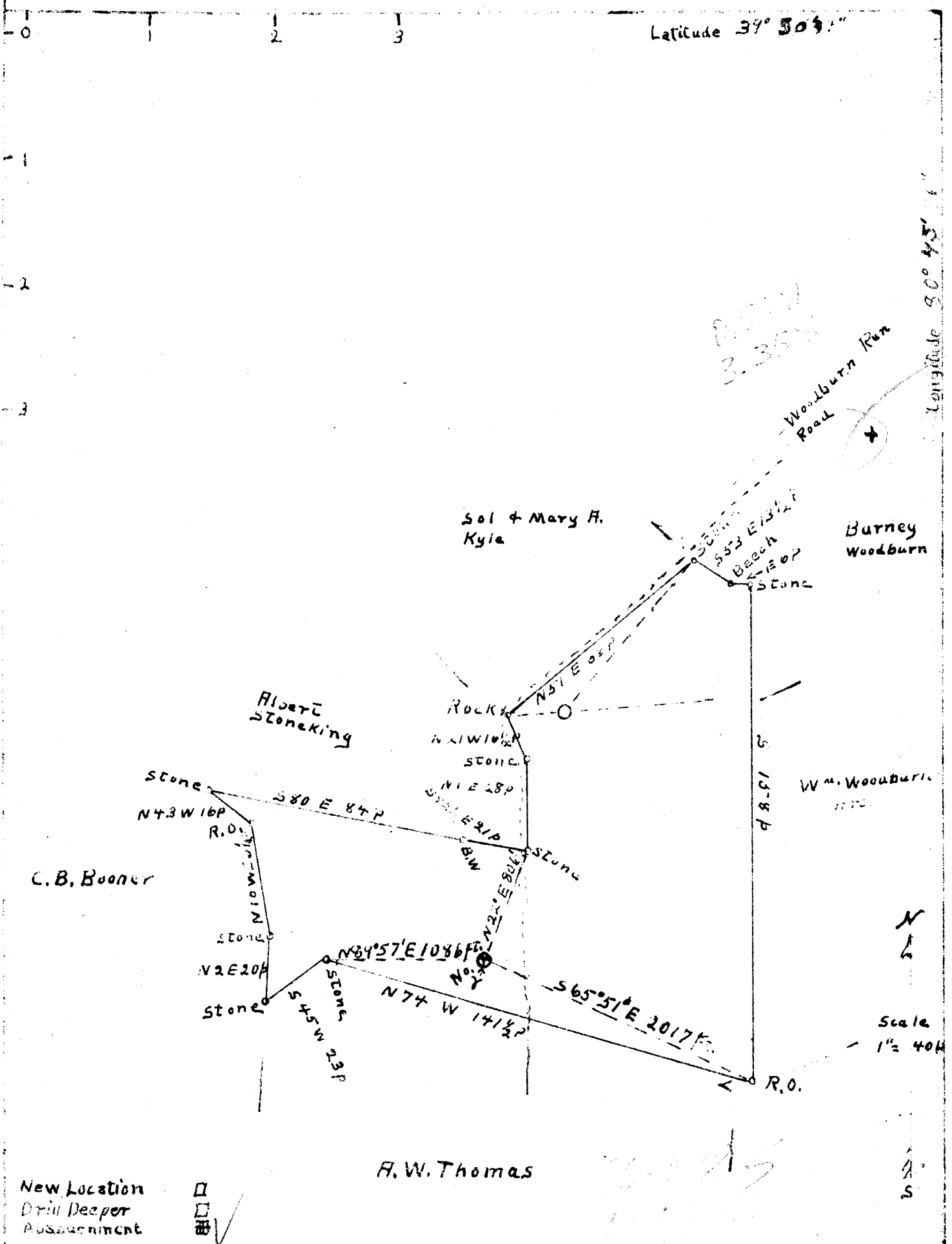


Latitude 39° 30' 00"

Longitude 90° 45' 00"



New Location

Drill Deeper

Assignment

Company Underwood Oil Co.

Address Shirley, W. Va.

Farm Elizabeth Stonking

Tract ~~Woodburn~~ 90 Lease No.

Well ~~Elizabeth~~ Serial No.

Elevation ~~1500~~ 1531 ft.

Quadrangle West Union

County Tyler District - McElroy

Engineer Don L. Riggle

Engineer's Registration No.

File No. 9-18-42 Drawing No.

Scale 1" = 40' rds.

STATE OF WEST VIRGINIA  
 DEPARTMENT OF MINES  
 OIL AND GAS DIVISION  
 CHARLESTON

WELL LOCATION MAP  
 FILE NO. JYL-322-A