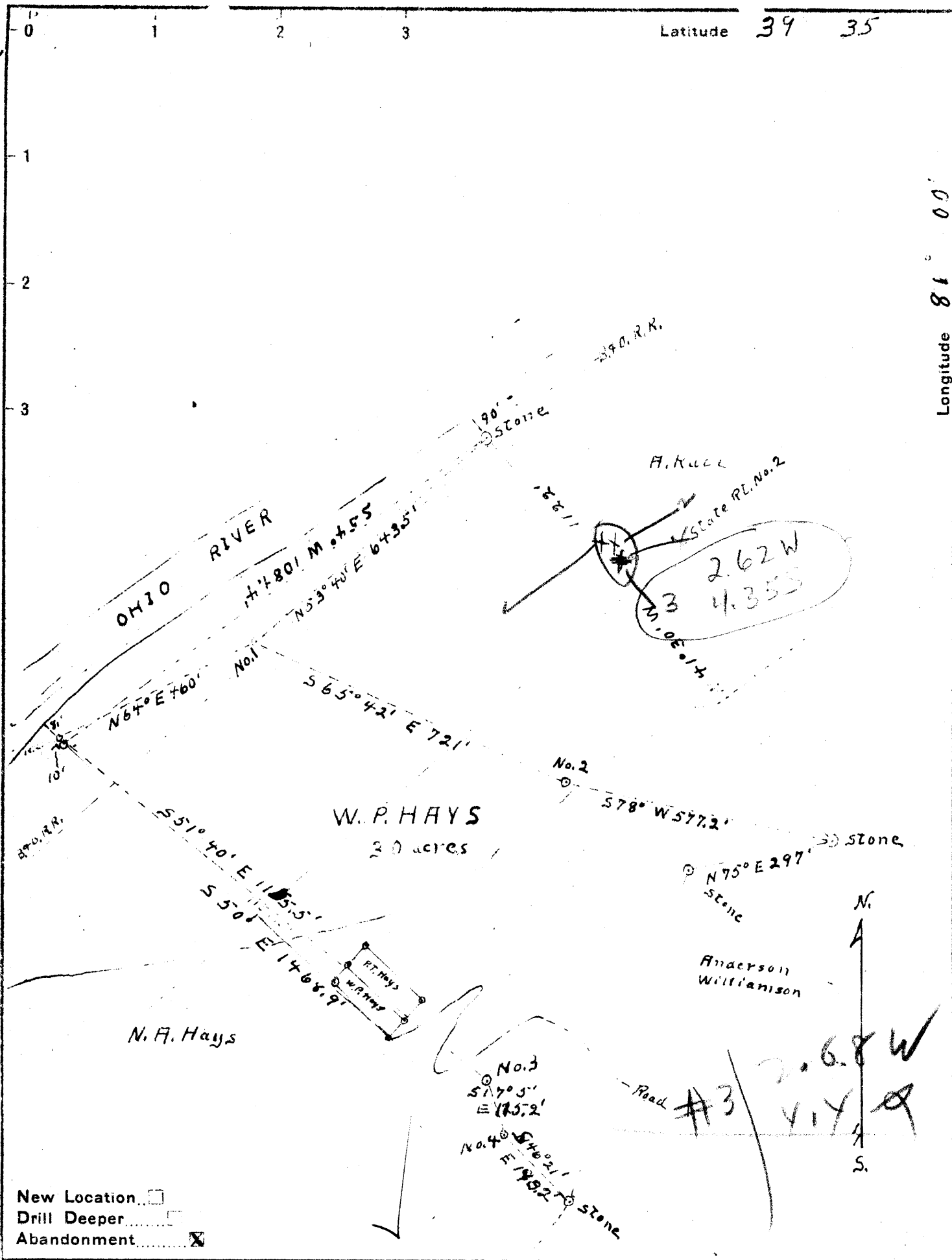


Latitude 39 35

Longitude 81 00



New Location
 Drill Deeper
 Abandonment

Company SUTTON BROS
 Address Sistersville, W. Va.
 Farm W. P. Hays
 Tract 1 Acres 30 Lease No. _____
 Wells (Farm) No. 1, 2, 3 & 4 Serial No. _____
 Elevation (Spirit Level) No. 1 - 632.5' No. 3 - 838.96'
No. 2 - 624.57' No. 4 - 837.06'
 Quadrangle New Matamoras
 County Tyler District Union
 Engineer Don L. Riggle, Eng'r.
 Engineer's Registration No. _____
 File No. 1 Drawing No. 19C 761
 Date Nov. 17, 1942 Scale 1" = 264'

STATE OF WEST VIRGINIA
 DEPARTMENT OF MINES
 OIL AND GAS DIVISION
 CHARLESTON

WELL LOCATION MAP
 FILE NO. Jy 4 - 336 A #3

+ Denotes location of well on United States Topographic Maps, scale 1 to 62,500, latitude and longitude lines being represented by border lines as shown.
 - Denotes one inch spaces on border line of original tracing.

W.P. HAYS No. 3 - SUTTON BROS - TYL-336-A