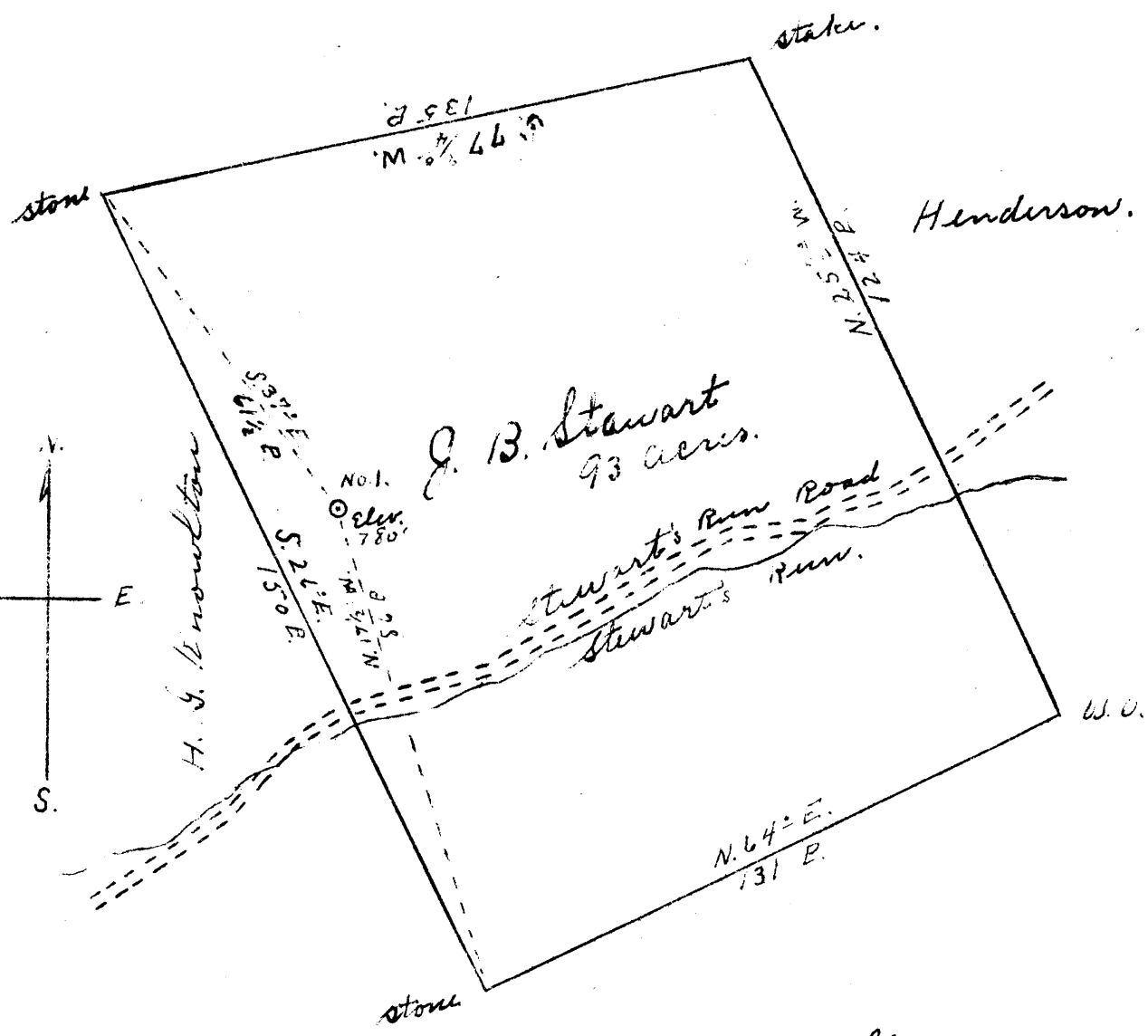


Latitude 39 30

Longitude 80 55

(+) 3.23 W
1.95 E

J. J. Garman, Hrs.



J. B. Stewart
93 acres.

A. J. Stewart, Hrs.

New Location

Drill Deeper

Abandonment

Company Penn Oil Company

Address Sistersville W. Va.

Farm J. B. Stewart

Tract _____ Acres 93 Lease No. _____

Well (Farm) No. 1 Serial No. _____

Elevation (Spirit Level) 750'

Quadrangle West Union

County Tyler District Union

Engineer Joe Triplett

Engineer's Registration No. _____

File No. _____ Drawing No. _____

Date May 19, 1943 Scale 30-P-1"

STATE OF WEST VIRGINIA
DEPARTMENT OF MINES
OIL AND GAS DIVISION
CHARLESTON

WELL LOCATION MAP
FILE NO. JYL-348-A

+ Denotes location of well on United States Topographic Maps, scale 1 to 62,500, latitude and longitude lines being represented by border lines as shown.

- Denotes one inch spaces on border line of original tracing.

MNL. HENDERSON NO. 1 WELL.
(JAMES B. STEWART?)

Gal. No. 157 (428)

Union District, Tyler County, W. Va.
Reno Oil Co.
Elevation, 785'.
Gas well.
On Stewart Run.

Maxton Sand (oil, 1480-1500')
Drilled through Big Injun Sand.

Top. Bottom.
1470 - 1505

RECORD DUPLICATE OF NO. 156 AND IS NOT CORRECT AS TO
ELEVATION NOR LOCATION.

NO RECORD FOR THE JAMES B. STEWART WELL.

Union District, Tyler County, W. Va.
Reno Oil Co.
Elevation, 745'.
Gas well.
On Stewart Run.

7
/

Maxton Sand (oil, 1480-1500')
Well drilled through Big Injun Sand.

Top. Bottom.
1470 - 1505