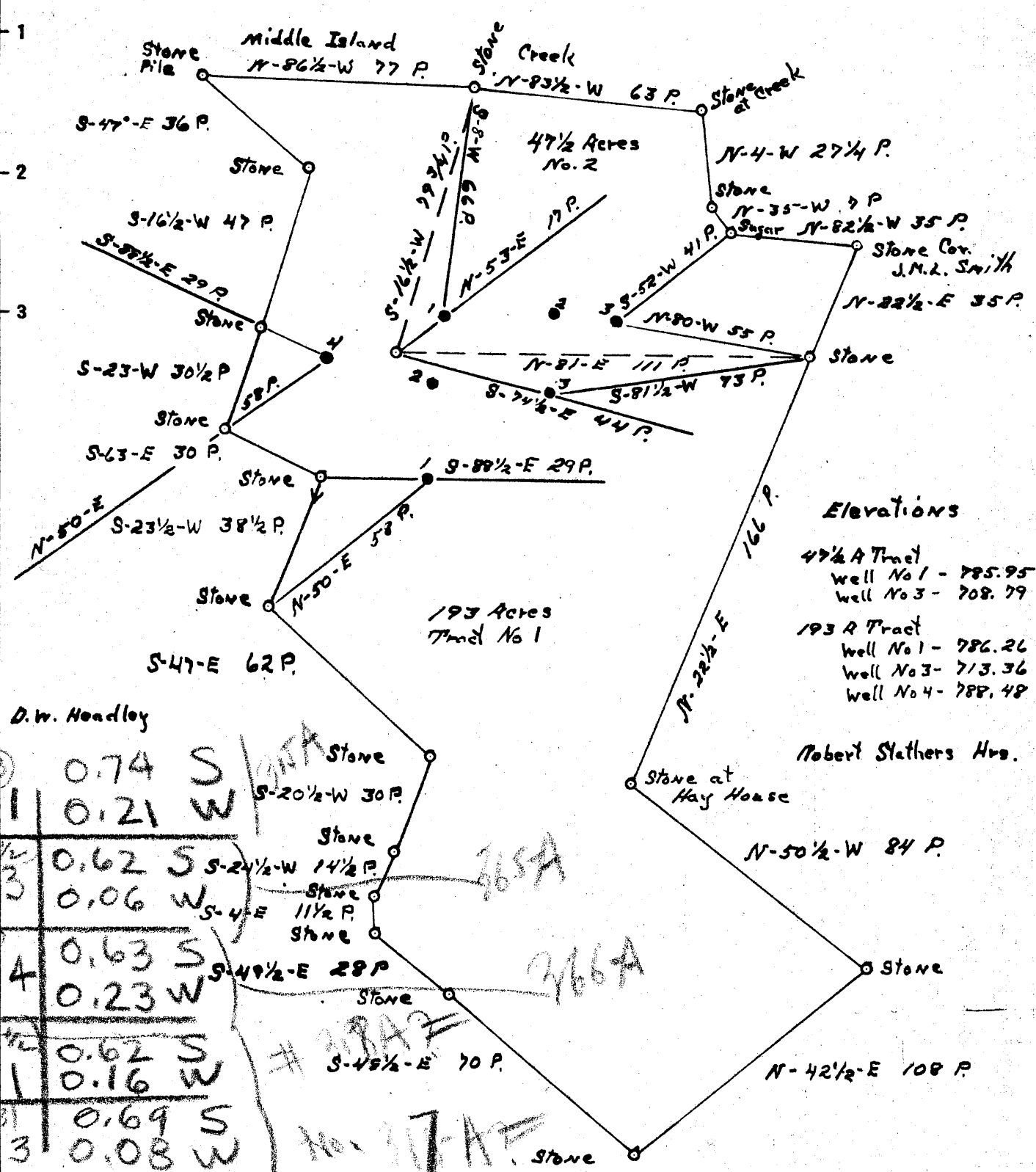


Latitude 37° 25'

Elev 787

Longitude 80° 50'



Elevations

- 47 1/2 A Tract
 - Well No 1 - 785.95
 - Well No 3 - 708.79
- 193 A Tract
 - Well No 1 - 786.26
 - Well No 3 - 713.36
 - Well No 4 - 788.48

Robert Stathers Hrs.

D.W. Headley

193	0.74	S
# 1	0.21	W
47 1/2	0.62	S
# 3	0.06	W
193	0.63	S
# 4	0.23	W
47 1/2	0.62	S
# 1	0.16	W
193	0.69	S
# 3	0.08	W

- New Location...
- Drill Deeper.....
- Abandonment.....

Company American Oil Development Company
 Address Sistersville, West Virginia
 Farm J.M. Smith
 Tract 1 & 2 Acres 193 1/2 Lease No. 1 & 2
 Well (Farm) No. 193A-1, 2 Serial No. _____
 Elevation (Spirit Level) _____
 Quadrangle West Union
 County Tyler District Centerville
 Engineer J.S. Naught
 Engineer's Registration No. _____
 File No. _____ Drawing No. _____
 Date 8-12-42 Scale 40 feet = 1 inch

STATE OF WEST VIRGINIA
 DEPARTMENT OF MINES
 OIL AND GAS DIVISION
 CHARLESTON

WELL LOCATION MAP
 FILE NO. TYL-315-A-No. 1-193-Ac.
TYL-365-A-# 3-47 1/2 AC.
TYL-366-A-# 4-193-Ac.

+ Denotes location of well on United States Topographic Maps, scale 1 to 62,500, latitude and longitude lines being represented by border lines as shown.

- Denotes one inch spaces on border line of original tracing.

Centerville District, Tyler County, W. Va.
American Oil & Dev. Co.
Elevation, 780' B.
Oil well.
On Jefferson Run.

	Top.	Bottom.
Pittsburgh Coal	475	477
1st Cow Run Sand (no good)	830	845
Maxton Sand (water, 1629')	1584	1629
Big Lime	1684	1774
Big Injun Sand (pay, 1832-1844')	1774	(1844?)