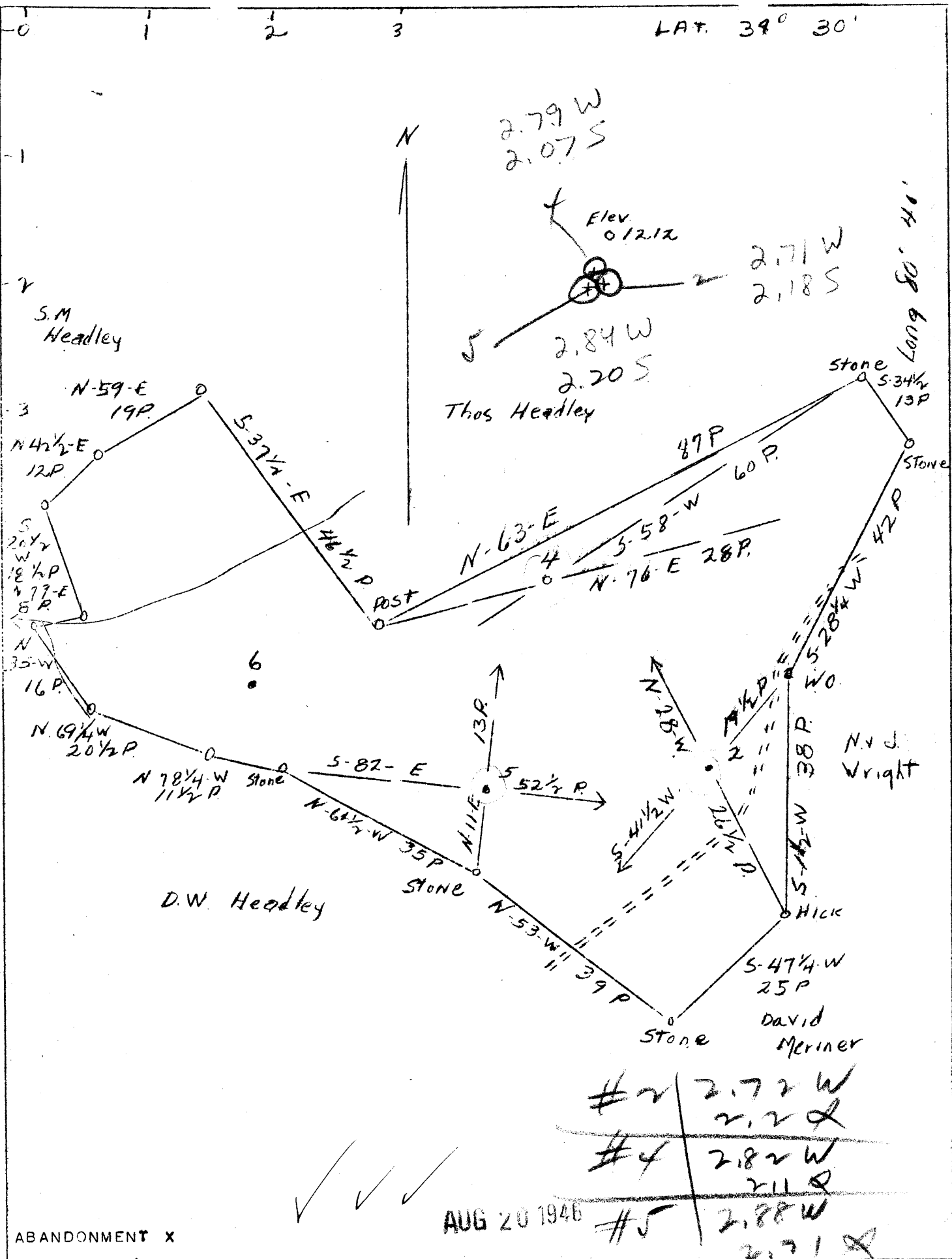


LAT. 39° 30'



ABANDONMENT X

COMPANY AMERICAN OIL DEVELOPMENT CO.
 ADDRESS SISTERSVILLE, W. VA.
 FARM EL. M. HEADLEY
 TRACT ACRES 45 LEASE NO.
 WELL (FARM) NO. 2, 4, & 5 SERIAL NO.
 ELEVATION (SL) 2-1223.01 4-1116.68
5-1038.46
 QUADRANGLE CENTERPOINT
 COUNTY TYLER DISTRICT MC ELROY
 ENGINEER J. S. HAUGHT
 COUNTY SURVEYOR
 ENGINEER'S REG. NO. COUNTY TYLER
 FILE NO. DRAWING NO.
 DATE 7/20/46 SCALE 20 RDS-1"

STATE OF WEST VIRGINIA
 DEPARTMENT OF MINES
 OIL AND GAS DIVISION
 CHARLESTON
 WELL LOCATION MAP new 662
 FILE NO. TYL-397A; NO. 2;
TYL-398A, NO. 4, 399A, NO. 5
 + DENOTES LOCATION OF WELL ON U.S. TOPOGRAPHIC MAPS, SCALE 1 TO 62,500, LATITUDE AND LONGITUDE LINES BEING REPRESENTED BY BORDER LINES AS SHOWN.
 * DENOTES ONE INCH SPACES ON BORDER LINE OF ORIGINAL TRACING.

ELM HEADLEY MS 2, 4 & 5 - AMERICAN OIL DEV. - TYL-397-8-9-