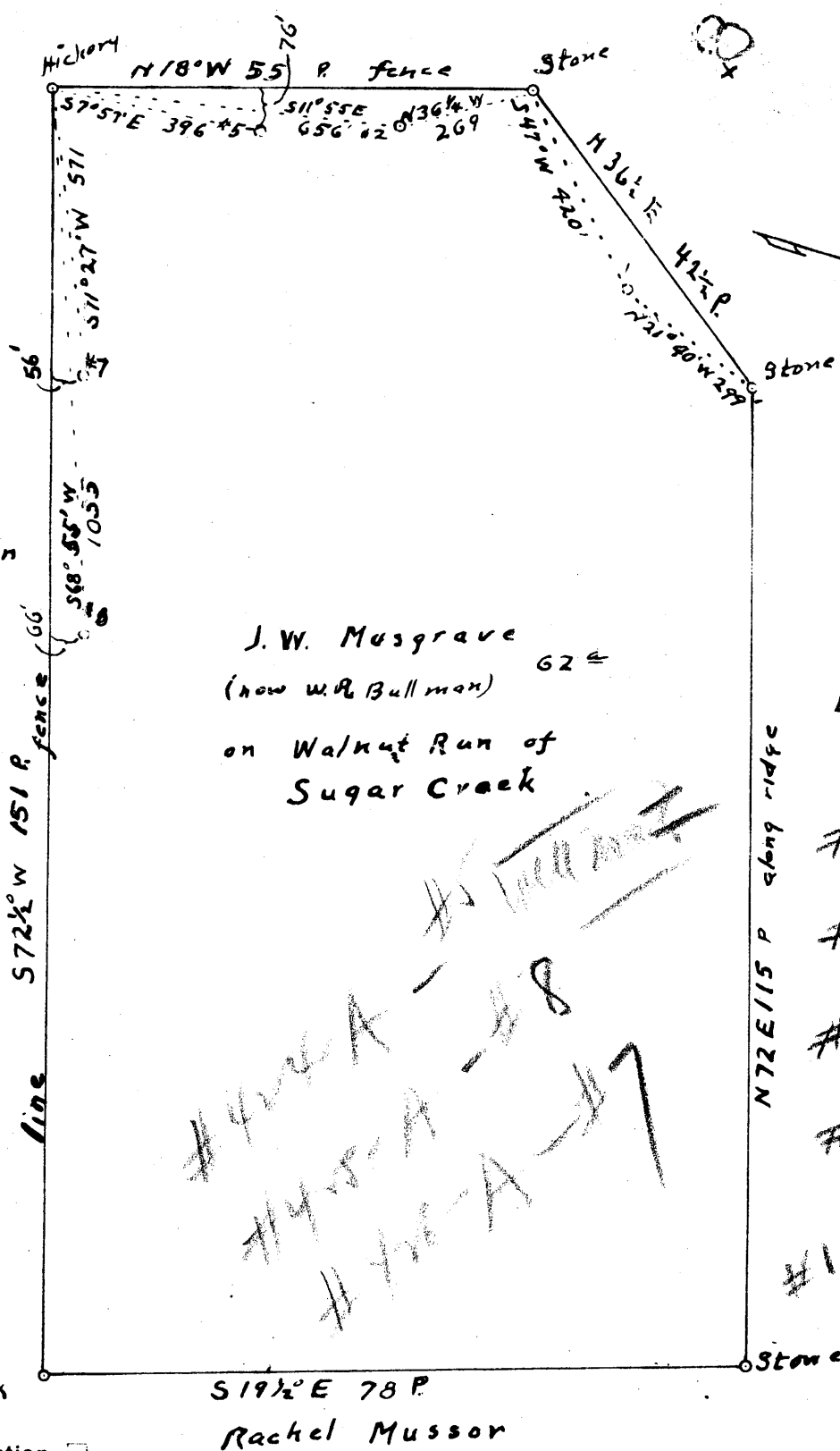


Latitude 39° 25'

Longitude 80° 55'

C.W. Everhart



J.W. Musgrave
(now W.R. Bullman) 62 ±
on Walnut Run of
Sugar Creek

Luther Cleve

#1	1.33 S	2.65 W
#5	1.19 S	2.64 W
#8	1.18 S	2.83 W
#7	1.16 S	2.74 W
#1	1.33 S	2.65 W

New Location
Drill Deeper
Abandonment

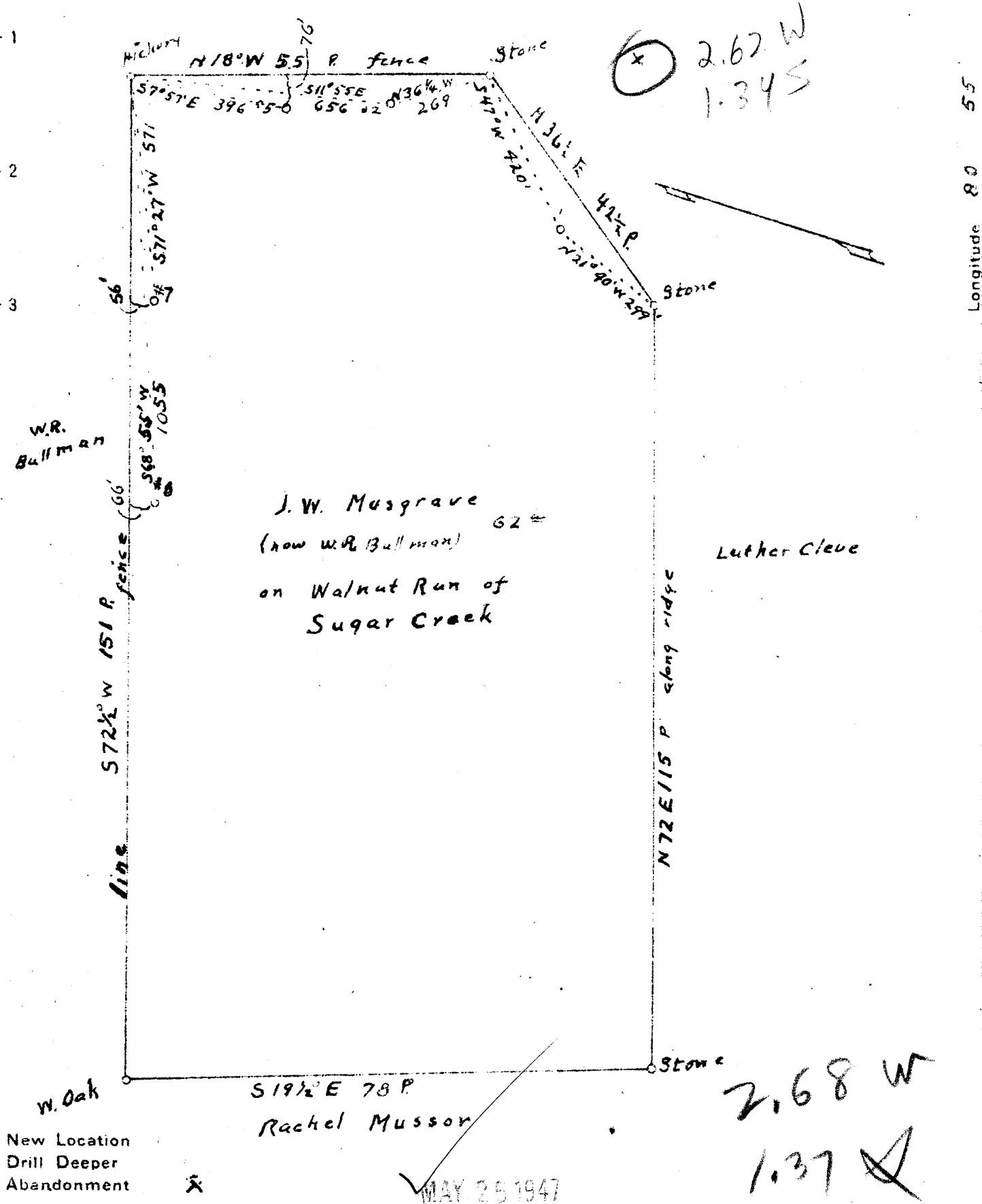
Company Smith, Pierson, Feick & Coss
 Address R2 Walker, W.Va.
 Farm J. W. Musgrave
 Tract _____ Acres 62 Lease No. _____
 Well (Farm) No. 1 Serial No. _____
 Elevation (Spirit Level) 1225 1222 1200 1040 1223
 Quadrangle West Union
 County Tyler District Meade
 Engineer O. Meredith
 Engineer's Registration No. _____
 File No. _____ Drawing No. _____
 Date May 5, 47 Scale 1" = 20 Poles

STATE OF WEST VIRGINIA
DEPARTMENT OF MINES
OIL AND GAS DIVISION
CHARLESTON

WELL LOCATION MAP
FILE NO. Tyler-422-A-11

+ Denotes location of well on United States Topographic Maps, scale 1 to 62,500, latitude and longitude lines being represented by border lines as shown.
 - Denotes one inch spaces on border line of original tracing.

CW Everhart



J.W. Musgrave
 (now W.R. Bullman) 62±
 on Walnut Run of
 Sugar Creek

Luther Cleve

New Location
 Drill Deeper
 Abandonment

MAY 25 1947

Company Smith, Pierson, Feick & Coss
 Address R2 Walker, W.Va.
 Farm J. W Musgrave
 Tract _____ Acres 62 Lease No. _____
 Well (Farm) No. L Serial No. _____
 Elevation (Spirit Level) 1200 1227 1200 1233
 Quadrangle West Union
 County Tyler District Meade
 Engineer O. Meredith
 Engineer's Registration No. _____
 File No. _____ Drawing No. _____
 Date May 5, 47 Scale 1 in = 20 Poles

STATE OF WEST VIRGINIA
 DEPARTMENT OF MINES
 OIL AND GAS DIVISION
 CHARLESTON

WELL LOCATION MAP
 FILE NO. TYL-422-A

+ Denotes location of well on United States
 Topographic Maps, scale 1 to 62,500, lat-
 itude and longitude lines being represented
 by border lines as shown.
 - Denotes one inch spaces on border line
 of original tracing.

Latitude 9° 25'

Longitude 80° 55'

C.W. Everhart

Hickory

N18°W 55 P

5-11°55'E 656'

N36 1/2 E 269'

stone

5+2
7+
8+

N36 1/2 E 42 1/2 P

stone

#7

W.R. Bullman

#8

J.W. Musgrave
(now W.R. Bullman) 62 ±
on Walnut Run of
Sugar Creek

Luther Cleve

S72 1/2 W 151 R

N72 E 15 P along ridge

Not oriented
Property

#424-A
#425-A
#426-A

#2	1.25	S
#2	2.75	W
#5	1.24	S
#5	2.82	W
#7	1.35	S
#7	2.91	W
#8	1.48	S
#8	2.91	W

Wook

S19 1/2 E 78 P
Rachel Mussor

stone

New Location
Drill Deeper
Abandonment

Company Smith, Piersol, Fick & Coss
 Address R2 Walker, W.Va.
 Farm J.W. Musgrave
 Tract _____ Acres 62 Lease No. _____
 Well (Farm) No. 2 Serial No. _____
 Elevation (Spirit Level) 1227
 Quadrangle West Union
 County Tyler District Meade
 Engineer O. Meredith
 Engineer's Registration No. _____
 File No. _____ Drawing No. _____
 Date May 5, 97 Scale 1 in = 20 Poles

STATE OF WEST VIRGINIA 4244
 DEPARTMENT OF MINES 425A
 OIL AND GAS DIVISION 426A
 CHARLESTON

WELL LOCATION MAP
 FILE NO. J24-423-A

+ Denotes location of well on United States Topographic Maps, scale 1 to 62,500, latitude and longitude lines being represented by border lines as shown.

- Denotes one inch spaces on border line of original tracing.

see also plat 422a

R. W. BULLMAN NO. 1 WELL.

Meade District, Tyler County, W. Va.

By Smith, Piersol, Feick & Coss, Route 2, Walker, W. Va.

Abandoned under permit Tyl-.....-A?

On 62 acres, on Sugar Creek.

Elevation, 1225' L.

Surface owned by R. W. Bullman, Wick, W. Va., and minerals by
Austin Smith, Clarksburg, W. Va.

Drilling commenced and completed in 1903.

10" casing, 700' (pulled); 8 $\frac{1}{4}$ " , 1430'; 6 $\frac{5}{8}$ " , 1865'.

Record furnished by the South Penn Natural Gas Co.

Oil well. Abandonment reported to Dept. of Mines May 3, 1947.

Record to RCT from Mrs. Griffith Aug. 20, 1947. Old File No. 400.

	Top.	Bottom.
Red rock	970	- 1170?
First Cow Run Sand	1154?	- 1174
First Salt Sand (water, 1480')	1420	- 1810
Maxton Sand	1996	- 2048
Pencil Cave	2106	- 2112
Big Lime ///	2074	- 2130
Keener Sand	2138	- 2170
Big Injun Sand (gas, 2070') (gas, 2178')		
(oil, 2190-2200')	2170	- 2220
Total depth		2220

Head District, Tyler County, W. Va.
 Carter Oil Co.
 1 mi. N. of McKin.

	Top.	Bottom.
Pittsburgh Coal	None	
Cow Run Sand	1154	1174
Salt Sand (water, 1480')	1420	1510
Maxton Sand	1995	2045
Big Lime	2074	2130
Keener Sand	2135	2170
Big Injun Sand (gas, 2170'; oil, 2190')	2170	2220

(200-bbl. well).