

Latitude  $39^{\circ} 25'$

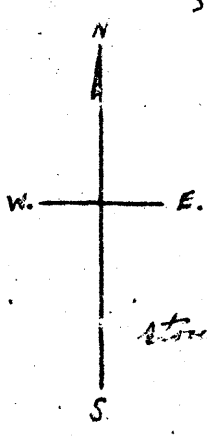
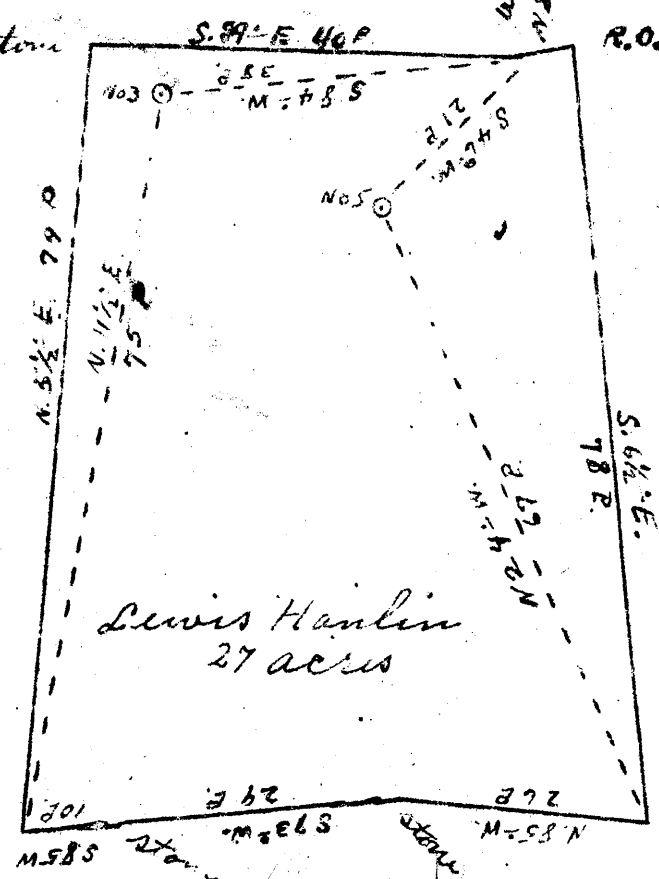
Longitude  $80^{\circ} 55'$

4.45 W  
3.31 S  
4.33 W  
3.58 S  
++

Wilson Barker

Jarthen Hanlin

M. Gattell



- New Location
- Drill Deeper
- Abandonment

Company Winsmoor and Co.  
 Address St. Marys W. Va.  
 Farm Lewis Hanlin  
 Tract \_\_\_\_\_ Acres 27 Lease No. \_\_\_\_\_  
 Well (Farm) No. 3 & 5 Serial No. \_\_\_\_\_  
 Elevation (Spirit Level) No. 3 1020' No 5 940  
 Quadrangle West Union  
 County Tyler District Meade  
 Engineer Jno. Triplett  
 Engineer's Registration No. \_\_\_\_\_  
 File No. \_\_\_\_\_ Drawing No. \_\_\_\_\_  
 Date June 27, 1947 Scale 1" = 20 P.

STATE OF WEST VIRGINIA  
 DEPARTMENT OF MINES  
 OIL AND GAS DIVISION  
 CHARLESTON

**WELL LOCATION MAP**

FILE NO. JYL-453-A-#3  
JYL-454-A-#5

+ Denotes location of well on United States Topographic Maps, scale 1 to 62,500, latitude and longitude lines being represented by border lines as shown.  
 - Denotes one inch spaces on border line of original tracing.



STATE OF WEST VIRGINIA  
DEPARTMENT OF MINES  
OIL AND GAS DIVISION

WELL RECORD

Oil or Gas Well \_\_\_\_\_ (KIND)

Permit No. \_\_\_\_\_

Company Dinsmoor & Company  
Address St. Marys, W. Va.  
Farm Lewis Hanlin Acres 27  
Location (waters) \_\_\_\_\_  
Well No. 3 Elev. 1020  
District Meade County Tyler  
The surface of tract is owned in fee by \_\_\_\_\_  
Address \_\_\_\_\_  
Mineral rights are owned by \_\_\_\_\_  
Address \_\_\_\_\_

Drilling commenced \_\_\_\_\_  
Drilling completed 1899  
Date Shot \_\_\_\_\_ From \_\_\_\_\_ To \_\_\_\_\_  
With \_\_\_\_\_  
Open Flow \_\_\_\_\_ /10ths Water in \_\_\_\_\_ Inch  
\_\_\_\_\_ /10ths Merc. in \_\_\_\_\_ Inch  
Volume \_\_\_\_\_ Cu. Ft.  
Rock Pressure \_\_\_\_\_ lbs. \_\_\_\_\_ hrs.  
Oil \_\_\_\_\_ bbls., 1st 24 hrs.  
Fresh water \_\_\_\_\_ feet \_\_\_\_\_ feet  
Salt water \_\_\_\_\_ feet \_\_\_\_\_ feet

Casing and Tubing	Used in Drilling	Left in Well	Packers
Size			
16			Kind of Packer
13			
10			Size of
8 1/4			
<del>6 5/8</del> <u>6 1/2</u>		<u>1085</u>	Depth set
5 3/16			
3			Perf. top
2			Perf. bottom
Liners Used			Perf. top
			Perf. bottom

CASING CEMENTED \_\_\_\_\_ SIZE \_\_\_\_\_ No. Ft. \_\_\_\_\_ Date \_\_\_\_\_  
COAL WAS ENCOUNTERED AT \_\_\_\_\_ FEET \_\_\_\_\_ INCHES  
\_\_\_\_\_ FEET \_\_\_\_\_ INCHES FEET \_\_\_\_\_ INCHES  
\_\_\_\_\_ FEET \_\_\_\_\_ INCHES FEET \_\_\_\_\_ INCHES

Formation	Color	Hard or Soft	Top	Bottom	Oil, Gas or Water	Depth Found	Remarks
Pay				1100			
Total Depth				1123			

Formation	Color	Hard or Soft	Top	Bottom	Oil, Gas or Water	Depth Found	Remarks

Date July 30, 1947

APPROVED DINSMOOR & COMPANY, Owner

By Donald Hart Asst. Secy.  
(Title)