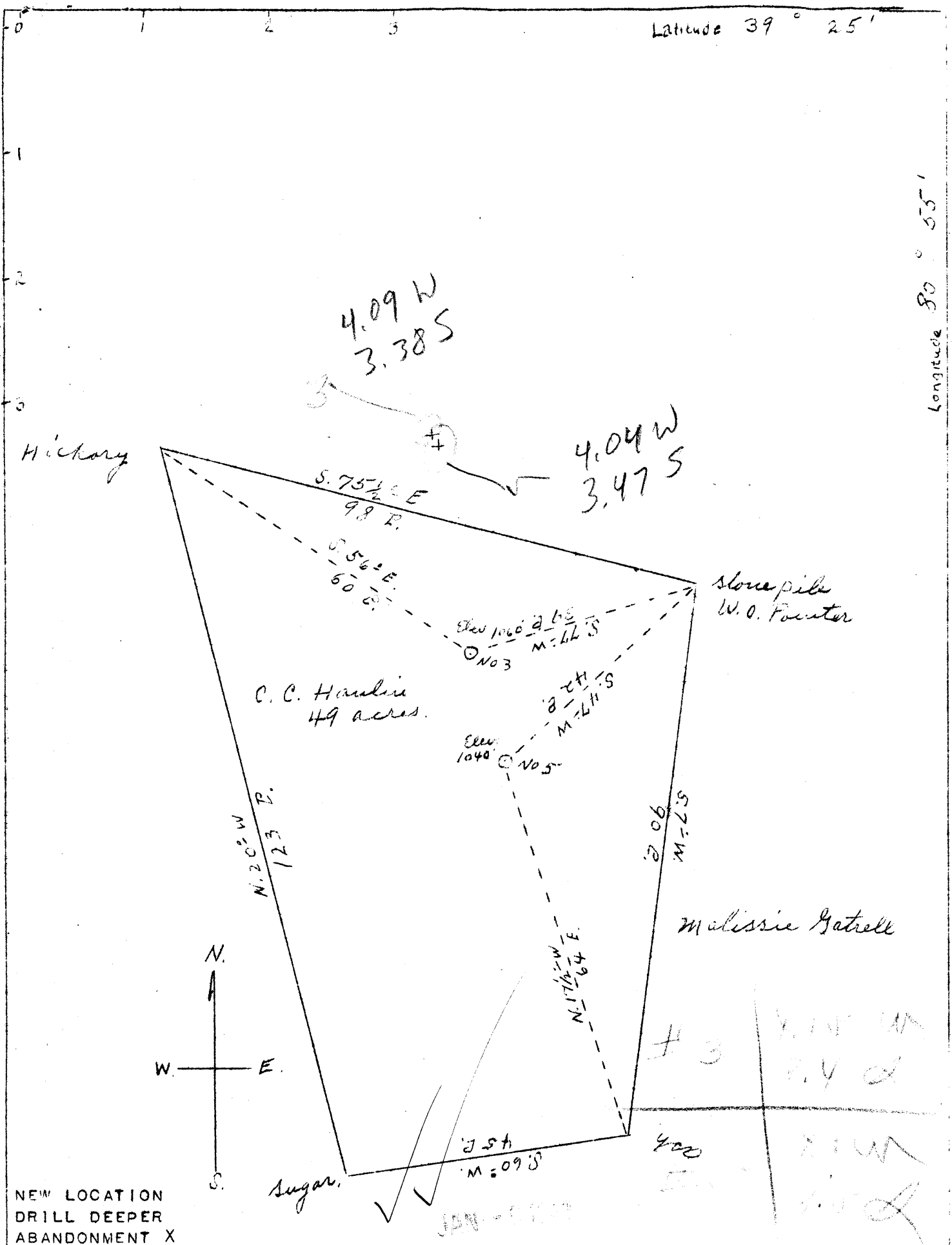


Latitude 39° 25'

Longitude 80° 55'



NEW LOCATION  
DRILL DEEPER  
ABANDONMENT X

COMPANY DINSMOOR & COMPANY  
 ADDRESS ST. MARYS, W. VA.  
 FARM C. C. HANLIN  
 TRACT ACRES 49 LEASE NO. \_\_\_\_\_  
 WELL (FARM) NO. 3 & 5 SERIAL NO. \_\_\_\_\_  
 ELEVATION (SPIRIT LEVER) NO. 3 1060  
 NO. 5 1040  
 QUADRANGLE WEST UNION  
 COUNTY TYLER DISTRICT MEADE  
 ENGINEER JNO. TRIPLETT  
 ENGINEER'S REGISTRATION NO. \_\_\_\_\_  
 FILE NO. \_\_\_\_\_ DRAWING NO. \_\_\_\_\_  
 DATE JUNE 27, 1947 SCALE 1" = 20 P.

STATE OF WEST VIRGINIA  
 DEPARTMENT OF MINES  
 OIL AND GAS DIVISION  
 CHARLESTON  
 WELL LOCATION MAP  
 FILE NO. TYL. 455-A-#3  
TYL. 456-A-#5  
 - DENOTES LOCATION OF WELL ON  
 UNITED STATES TOPOGRAPHIC MAPS,  
 SCALE 1 TO 62,500, LATITUDE AND  
 LONGITUDE LINES BEING REPRESENTED  
 BY BORDER LINES AS SHOWN.  
 - DENOTES ONE INCH SPACES ON  
 BORDER LINE OF ORIGINAL TRACING.

C. C. HANLIN Nos. 3 & 5 - DINSMOOR & Co. - TYL-455-6-1



STATE OF WEST VIRGINIA  
DEPARTMENT OF MINES  
OIL AND GAS DIVISION

WELL RECORD

Oil or Gas Well \_\_\_\_\_ (KIND)

Permit No. \_\_\_\_\_

Company Dinsmoor & Company  
Address St. Marys, W. Va.  
Farm C. C. Hanlin Acres 49  
Location (waters) \_\_\_\_\_  
Well No. 3 Elev. 1060  
District Meade County Tyler  
The surface of tract is owned in fee by \_\_\_\_\_  
Address \_\_\_\_\_  
Mineral rights are owned by \_\_\_\_\_  
Address \_\_\_\_\_  
Drilling commenced \_\_\_\_\_  
Drilling completed 1899  
Date Shot \_\_\_\_\_ From \_\_\_\_\_ To \_\_\_\_\_  
With \_\_\_\_\_  
Open Flow \_\_\_\_\_ /10ths Water in \_\_\_\_\_ Inch  
\_\_\_\_\_ /10ths Merc. in \_\_\_\_\_ Inch  
Volume \_\_\_\_\_ Cu. Ft.  
Rock Pressure \_\_\_\_\_ lbs. \_\_\_\_\_ hrs.  
Oil \_\_\_\_\_ bbls., 1st 24 hrs.  
Fresh water \_\_\_\_\_ feet \_\_\_\_\_ feet  
Salt water \_\_\_\_\_ feet \_\_\_\_\_ feet

Casing and Tubing	Used in Drilling	Left in Well	Packers
Size			Kind of Packer _____
16			Size of _____
13			Depth set _____
10			Perf. top _____
8 1/4		<u>1045</u>	Perf. bottom _____
<del>6 7/8</del> <u>6 1/2</u>			Perf. top _____
5 3/16			Perf. bottom _____
3			
2			
Liners Used			

CASING CEMENTED \_\_\_\_\_ SIZE \_\_\_\_\_ No. Ft. \_\_\_\_\_ Date \_\_\_\_\_

COAL WAS ENCOUNTERED AT \_\_\_\_\_ FEET \_\_\_\_\_ INCHES  
\_\_\_\_\_ FEET \_\_\_\_\_ INCHES FEET \_\_\_\_\_ INCHES  
\_\_\_\_\_ FEET \_\_\_\_\_ INCHES FEET \_\_\_\_\_ INCHES

Formation	Color	Hard or Soft	Top	Bottom	Oil, Gas or Water	Depth Found	Remarks
Pay				1061			
Total Depth				1092			

Formation	Color	Hard or Soft	Top	Bottom	Oil, Gas or Water	Depth Found	Remarks

Date July 30, 19 47

APPROVED \_\_\_\_\_, Owner

By Donald Stast Asst. Secy  
(Title)

