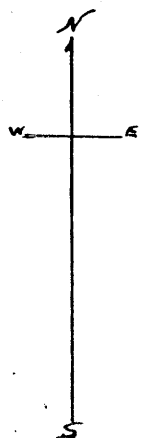
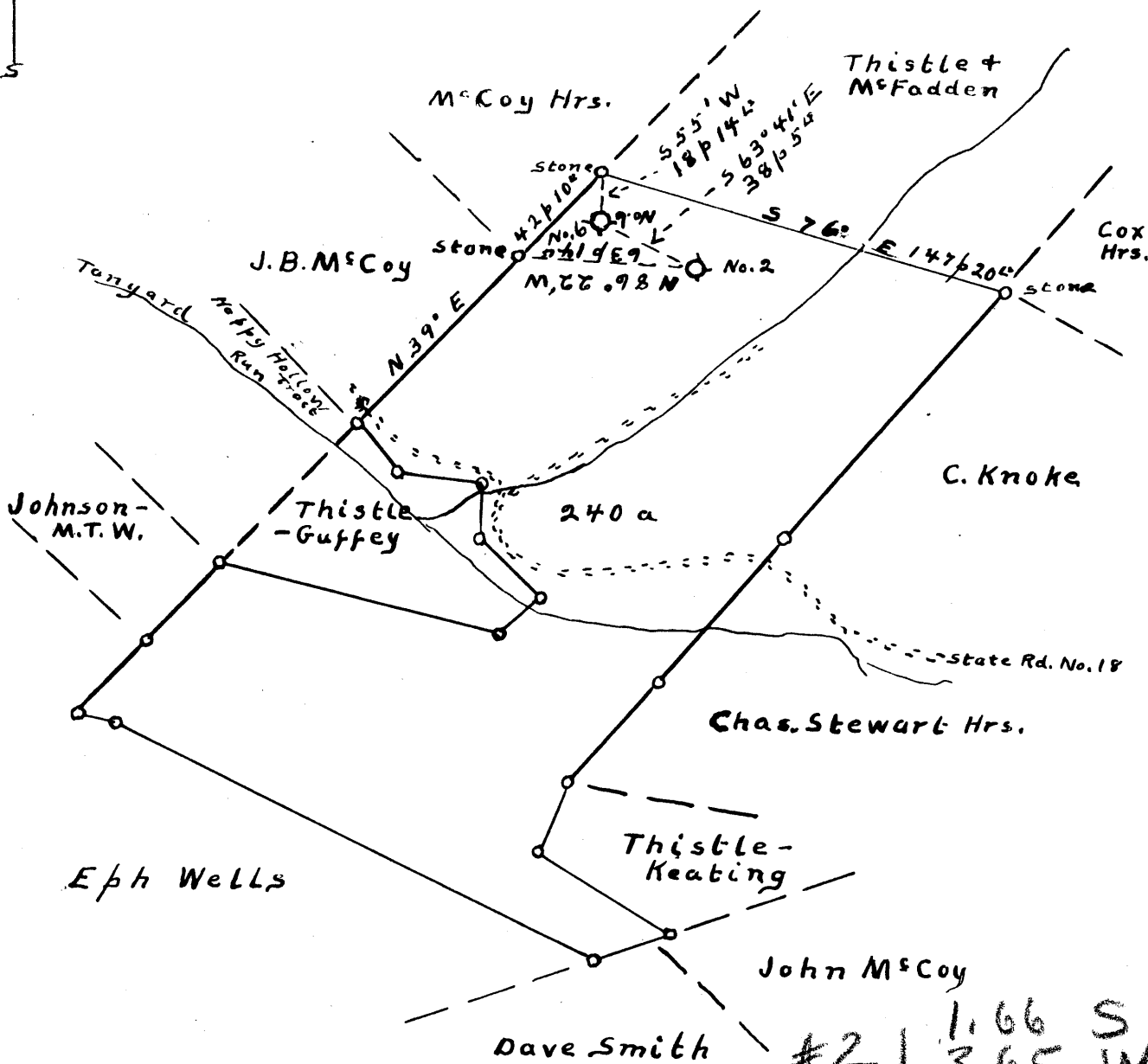


Latitude 39° 35'

Longitude 80° 55'



#6  
3.72W  
1.56S  
+  
#2  
3.60W  
1.74S



- New Location
- Drill Deeper
- Abandonment

#2	1.66 S
	3.65 W
#6	1.57 S
	3.78 W

Company J.R. Bull  
 Address Sistersville, W. Va.  
 Farm N. Salisbury  
 Tract 1 Acres 240 Lease No. 6079  
 Well (Farm) No.'s 2 & 6 Serial No. \_\_\_\_\_  
 Elevation (Spirit Level) No. 2 - 908' No. 6 - 1068'  
 Quadrangle New Martinsville  
 County Tyler District Lincoln  
 Engineer Don L. Riggle  
 Engineer's Registration No. \_\_\_\_\_  
 File No. 04G-S.P.11 Drawing No. 1389  
 Date May 17, '48 Scale 1" = 60 p

STATE OF WEST VIRGINIA  
 DEPARTMENT OF MINES  
 OIL AND GAS DIVISION  
 CHARLESTON

### WELL LOCATION MAP

FILE NO. JYL-508-A-#2  
JYL-509-A-#6

+ Denotes location of well on United States Topographic Maps, scale 1 to 62,500, latitude and longitude lines being represented by border lines as shown.

- Denotes one inch spaces on border line of original tracing.