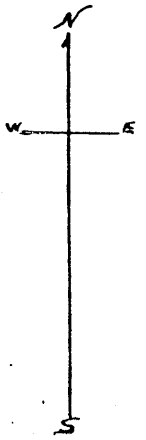
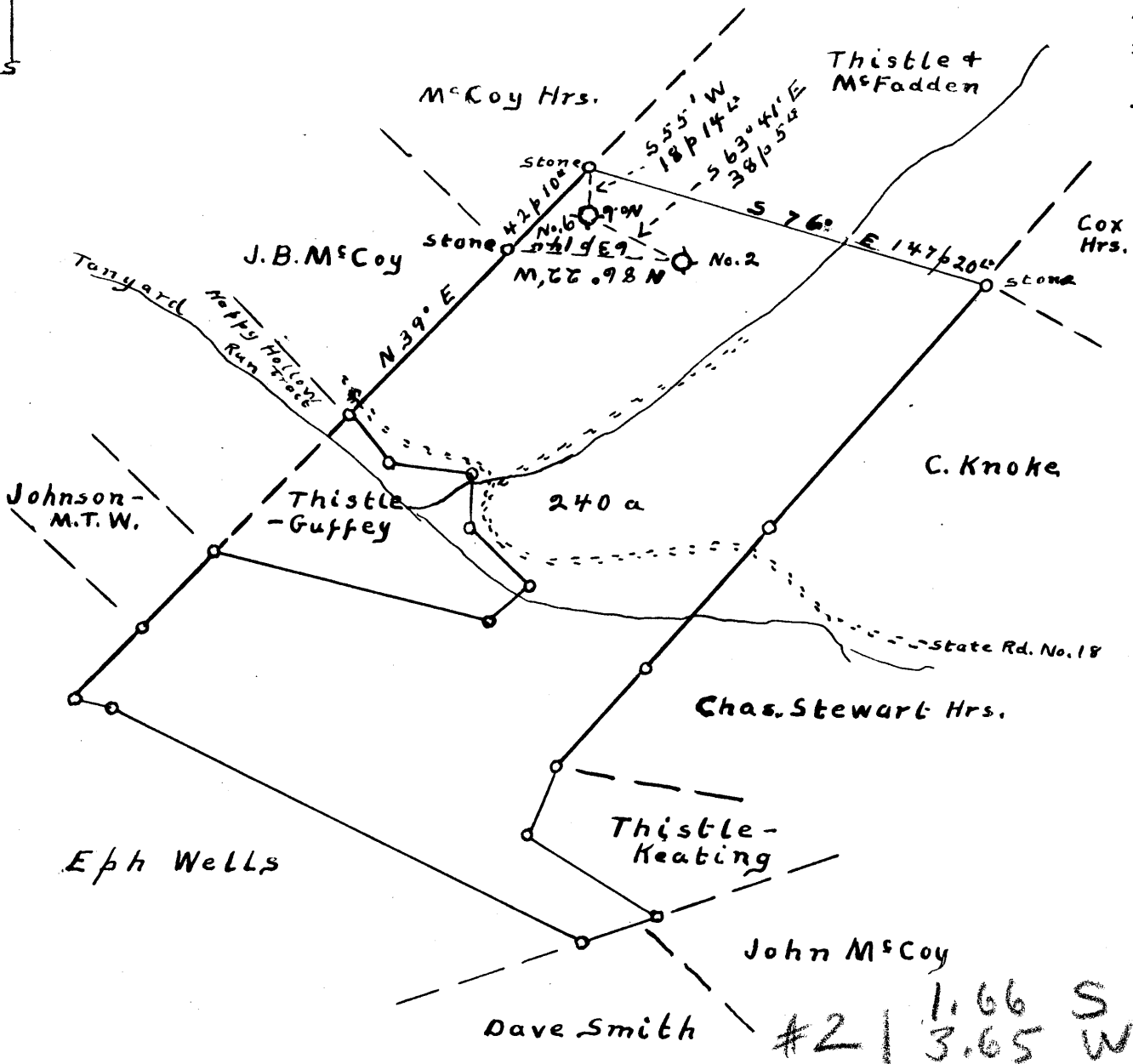


Latitude 39° 35'

Longitude 80° 55'



#6 - + - #2
3.72 W
1.56 S
3.60 W
1.74 S



- New Location
- Drill Deeper
- Abandonment

#2	1.66	S
#2	3.65	W
#6	1.57	S
#6	3.78	W

Company J.R. Bull
 Address Sistersville, W. Va.
 Farm N. Salisbury
 Tract 1 Acres 240 Lease No. 6079
 Well (Farm) No. 2 + 6 Serial No. _____
 Elevation (Spirit Level) No. 2 - 908' No. 6 - 1068'
 Quadrangle New Martinsville
 County Tyler District Lincoln
 Engineer Don L. Riggle
 Engineer's Registration No. _____
 File No. 0 + G - S.P. 11 Drawing No. 1389
 Date May 17, '48 Scale 1" = 60 f

STATE OF WEST VIRGINIA
 DEPARTMENT OF MINES
 OIL AND GAS DIVISION
 CHARLESTON

WELL LOCATION MAP
 FILE NO. JYL-508-A-#2
JYL-509-A-#6

+ Denotes location of well on United States Topographic Maps, scale 1 to 62,500, latitude and longitude lines being represented by border lines as shown.

- Denotes one inch spaces on border line of original tracing.